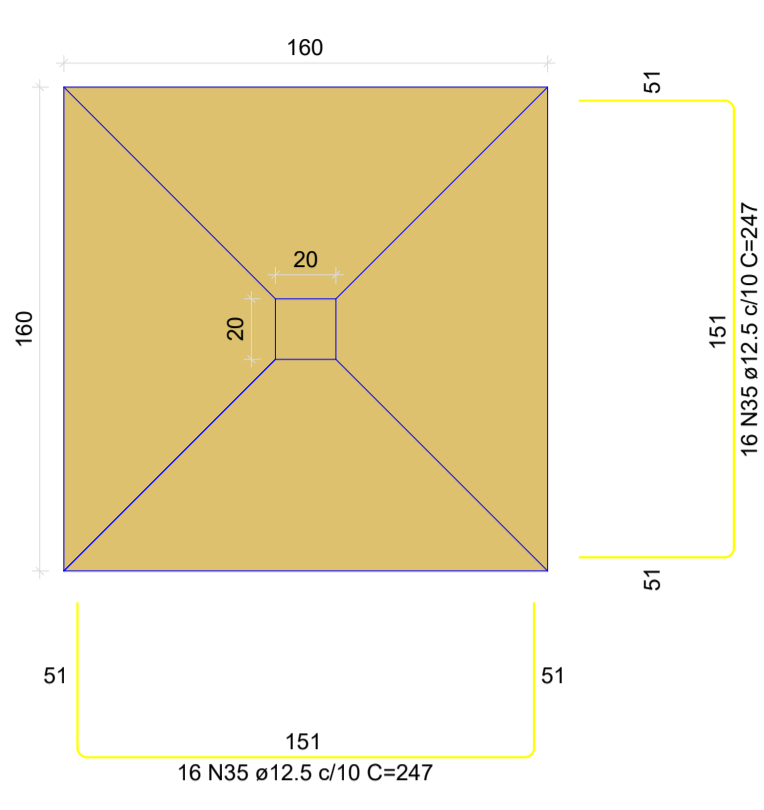
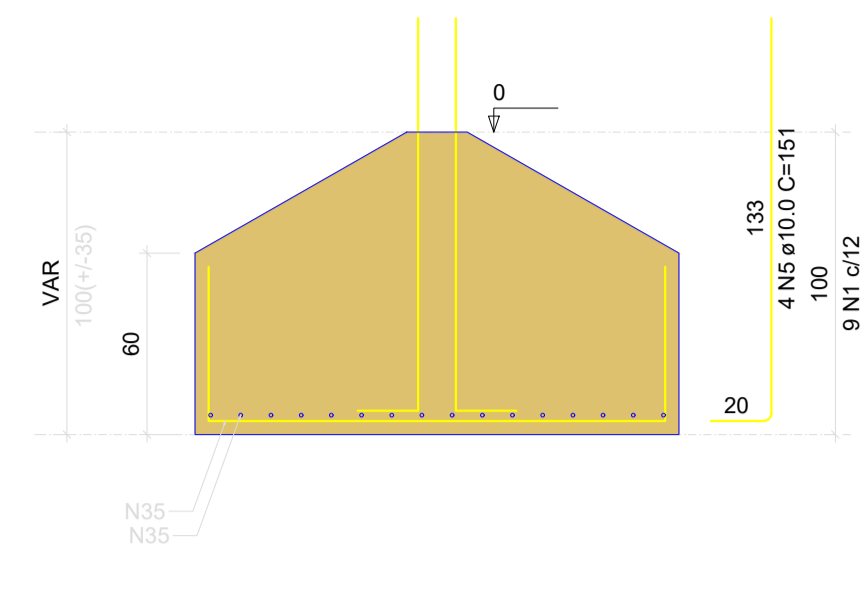


**S5**  
PLANTA  
ESC 1:25

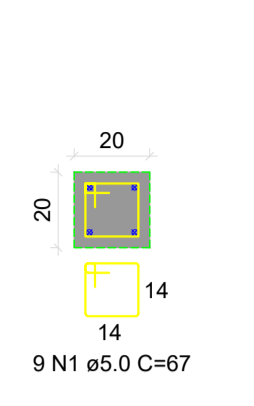


Solo com capacidade de suporte > 1.50 kgf/cm<sup>2</sup>  
Solo compactado sobre a sapata  
peso específico > 1600.00 kgf/m<sup>3</sup>

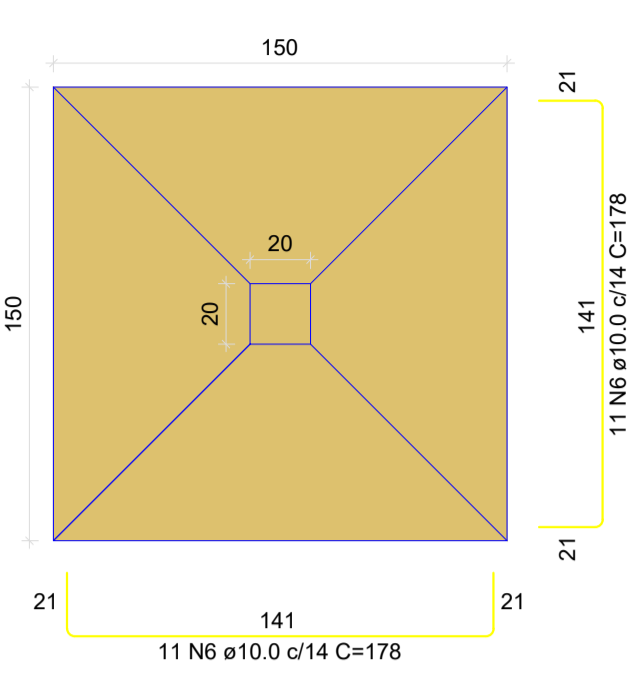
**CORTE**  
ESC 1:25



**DETALHE DO PILAR**  
ESC 1:20

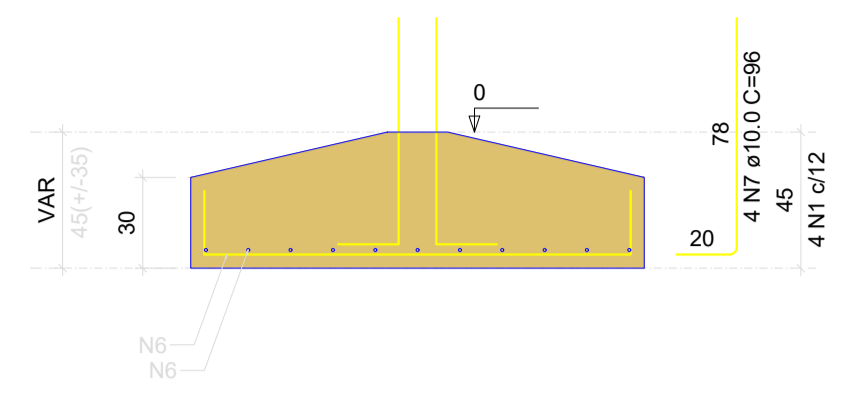


**S6**  
PLANTA  
ESC 1:25

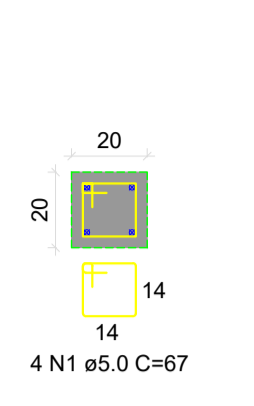


Solo com capacidade de suporte > 1.50 kgf/cm<sup>2</sup>  
Solo compactado sobre a sapata  
peso específico > 1600.00 kgf/m<sup>3</sup>

**CORTE**  
ESC 1:25



**DETALHE DO PILAR**  
ESC 1:20



RELAÇÃO DO AÇO

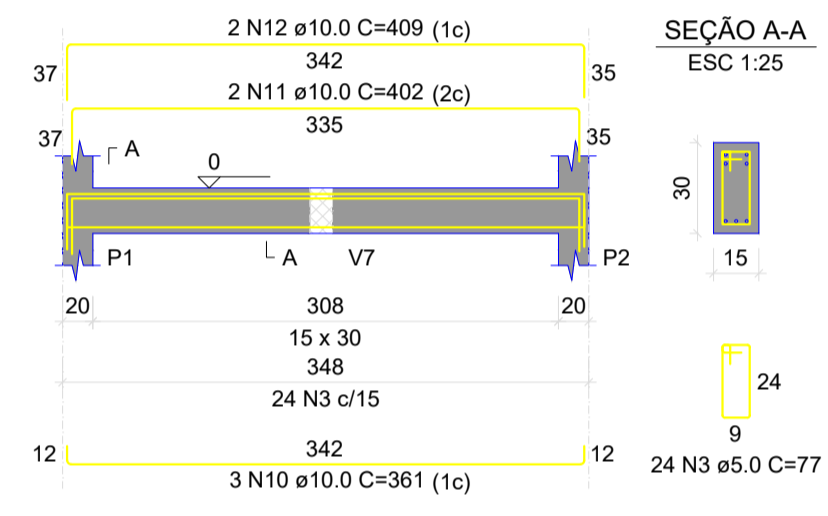
AÇO	N	DIAM (mm)	QUANT	C.UNIT (cm)	C.TOTAL (cm)
CA60	1	5.0	158	87	10586
S3-L1	2	5.0	36	54	1944
S6-L1	3	5.0	311	77	23947
V2-L2	4	10.0	24	247	5928
V3-L1	5	10.0	16	151	2416
V4-L2	6	10.0	44	178	7832
V5-L2	7	10.0	8	96	768
V6-L1	8	10.0	4	342	1368
V8-L1	9	10.0	4	374	1496
S4-L1	10	10.0	6	361	2166
V1-L1	11	10.0	2	402	804
V3-L2	12	10.0	2	408	816
V4-L1	13	10.0	16	322	5152
V6-L2	14	10.0	2	353	706
V8-L2	15	10.0	2	372	744
S5-L1	16	10.0	2	186	372
V1-L2	17	10.0	2	211	422
V3-L1	18	10.0	2	354	708
V4-L2	19	10.0	1	144	144
V5-L1	20	10.0	2	401	802
V6-L1	21	10.0	2	408	816
V8-L1	22	10.0	2	350	700
S3-L2	23	10.0	2	378	756
S6-L2	24	10.0	2	353	706
V2-L1	25	10.0	2	374	748
V3-L2	26	10.0	1	223	223
V4-L1	27	10.0	2	336	672
V5-L1	28	10.0	2	350	700
V6-L2	29	10.0	2	341	682
V8-L2	30	10.0	2	378	756
S4-L2	31	10.0	2	385	770
V1-L2	32	10.0	1	366	366
V3-L1	33	10.0	2	373	746
V4-L2	34	12.5	68	257	17476
V5-L1	35	12.5	64	247	15808

RESUMO DO AÇO

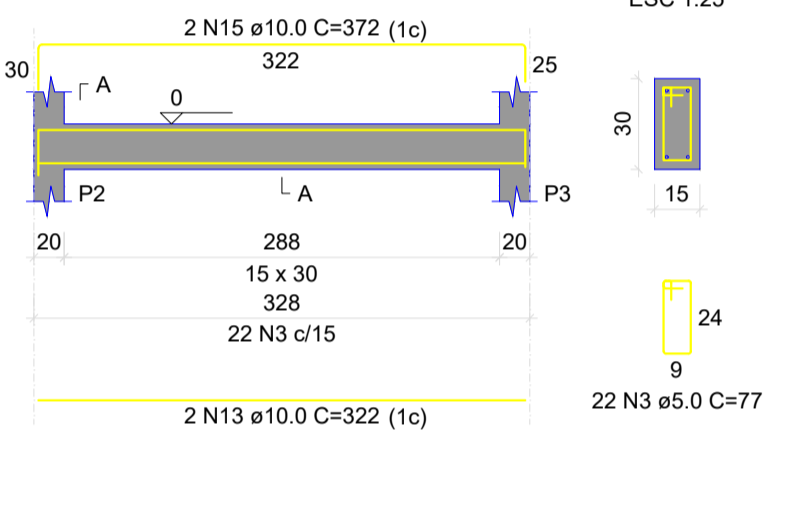
AÇO	DIAM (mm)	C.TOTAL (m)	PESO + 10% (kg)
CA50	10.0	412.9	280
CA60	12.5	332.6	352.7
CA60	5.0	364.8	61.8
<b>PESO TOTAL (kg)</b>			<b>694.5</b>

Volume de concreto (C-25) = 12.93 m<sup>3</sup>  
Área de forma = 63.68 m<sup>2</sup>

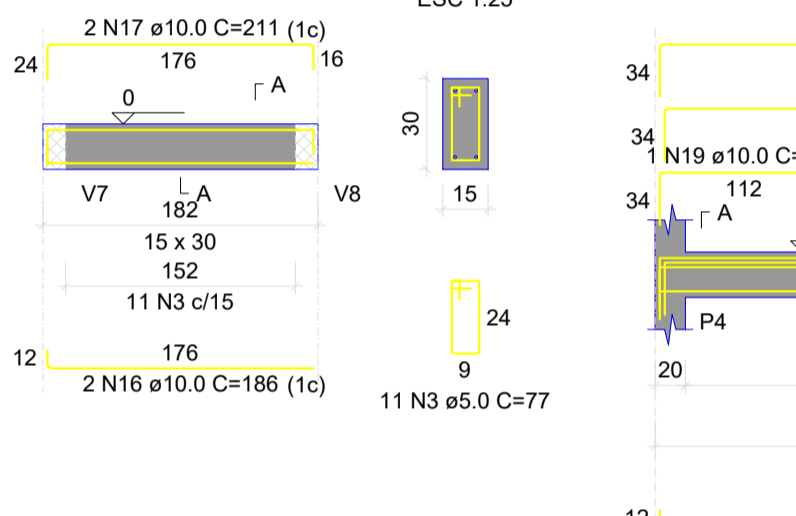
**V1**  
ESC 1:50



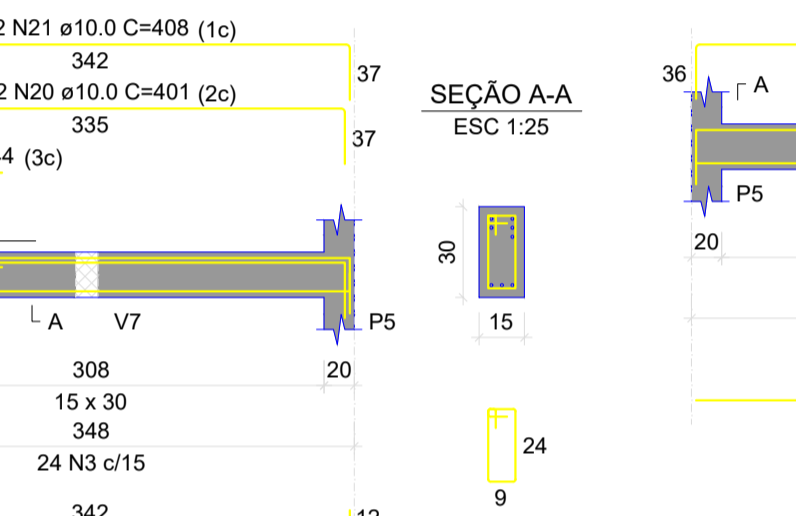
**V2**  
ESC 1:50



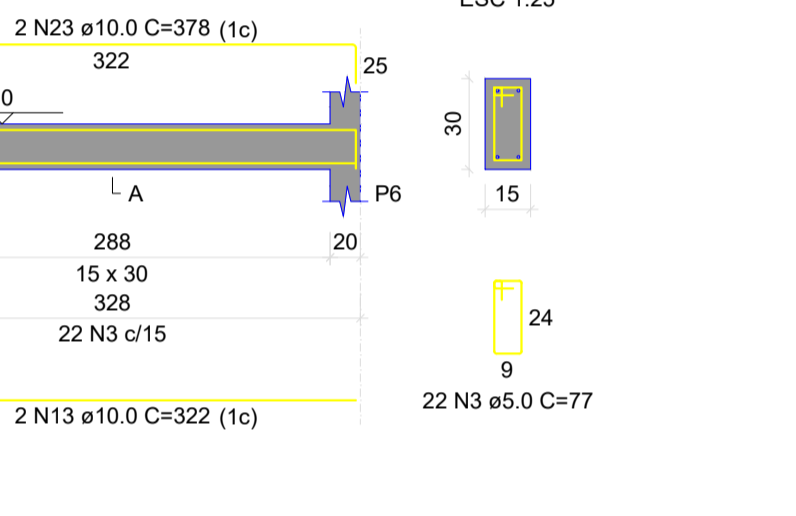
**V3**  
ESC 1:50



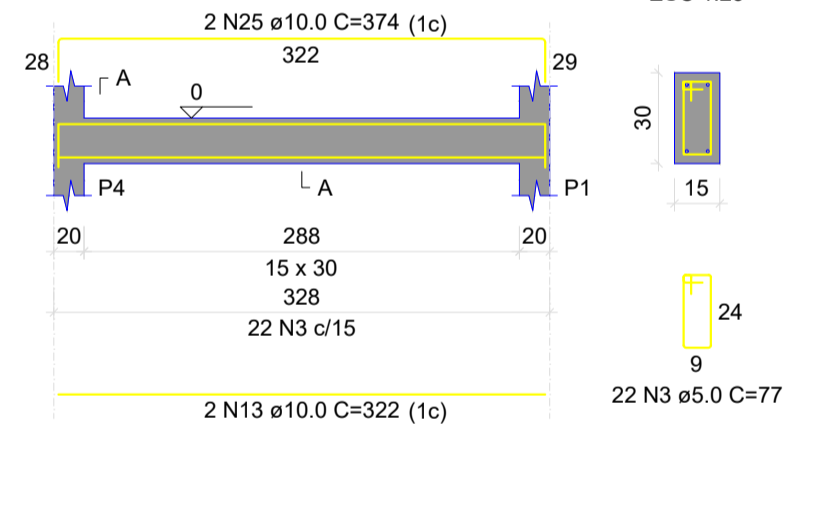
**V4**  
ESC 1:50



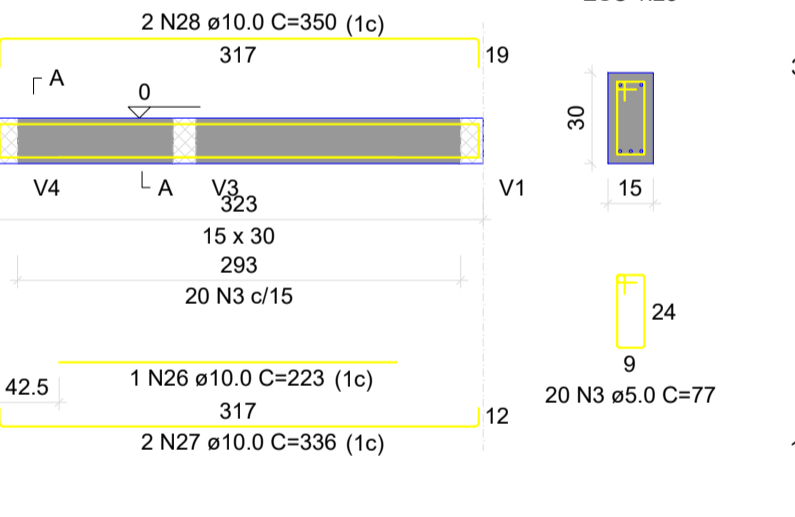
**V5**  
ESC 1:50



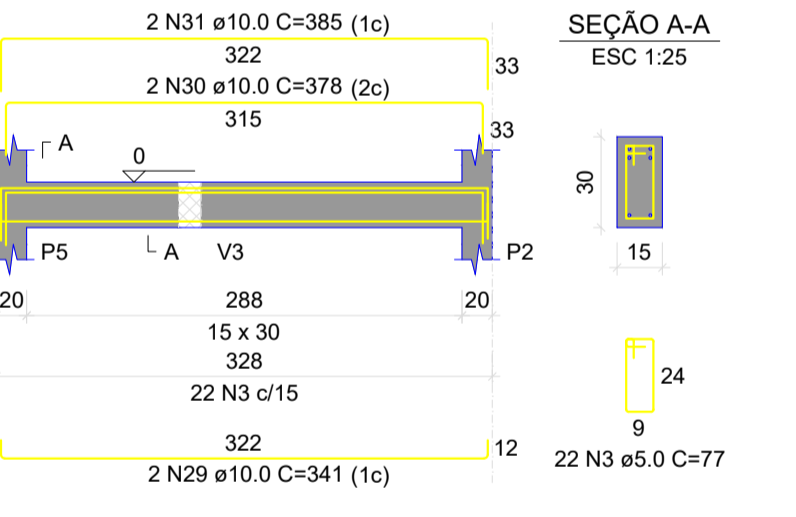
**V6**  
ESC 1:50



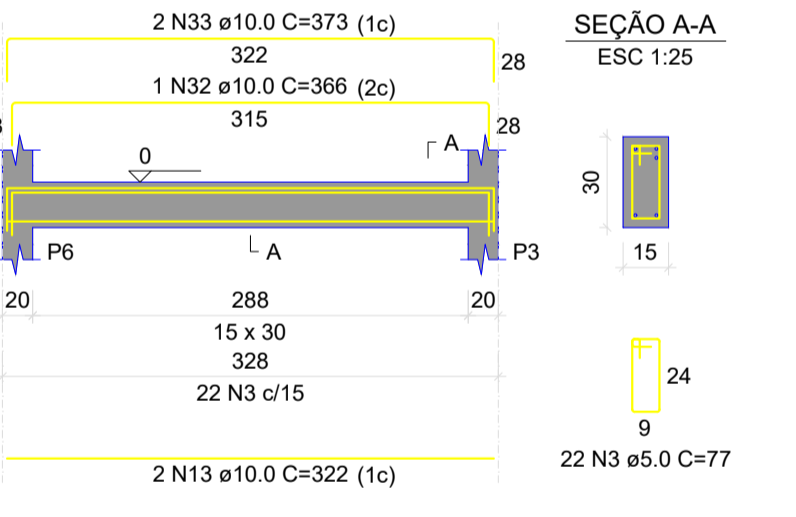
**V7**  
ESC 1:50



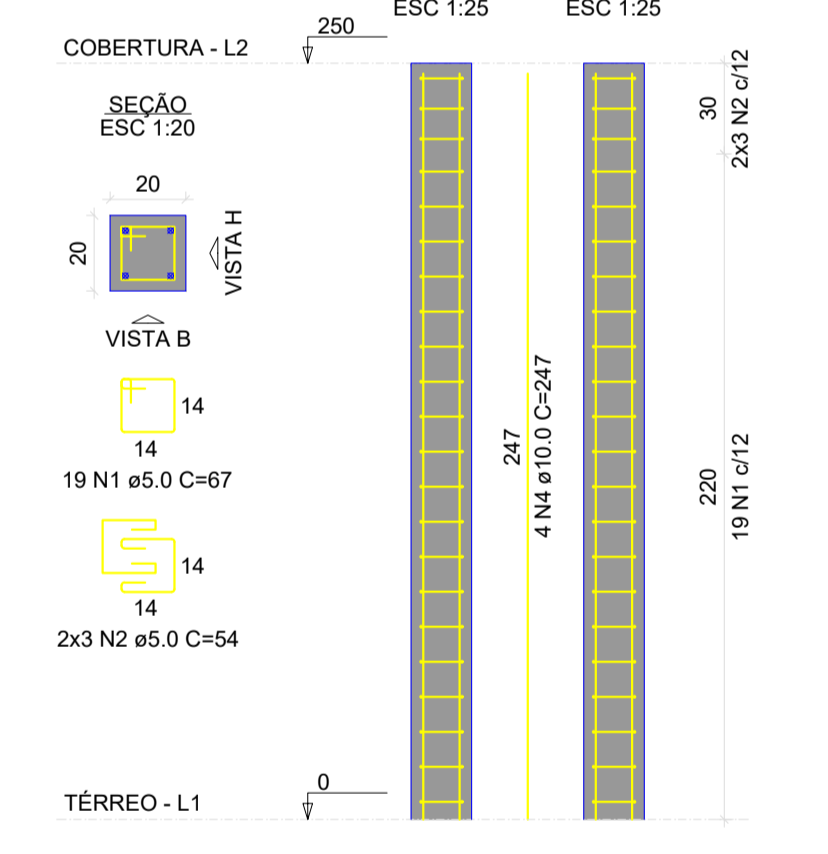
**V8**  
ESC 1:50



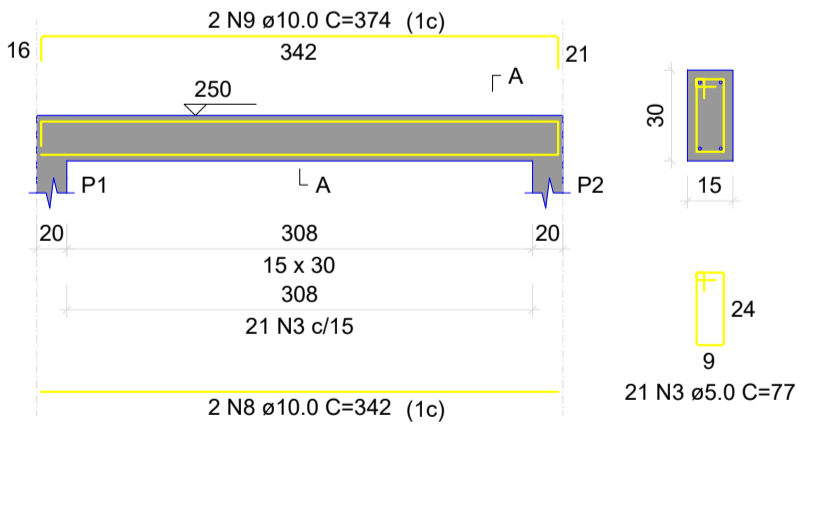
**V9**  
ESC 1:50



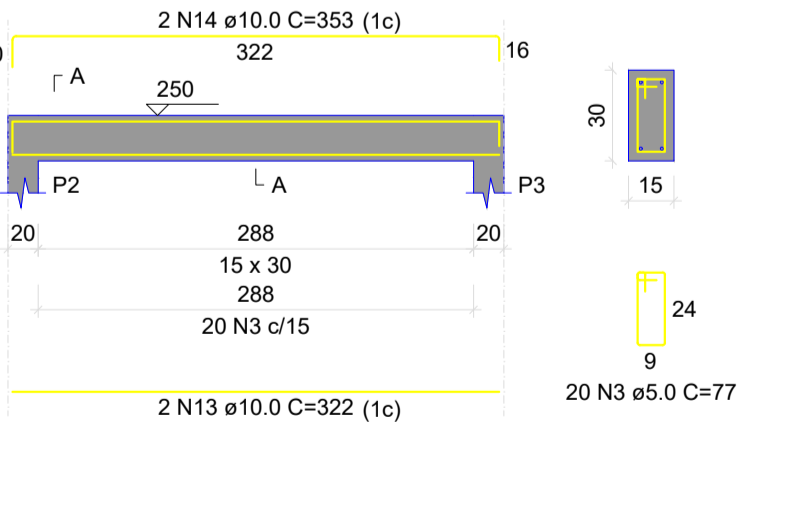
**P1=P2=P3=P4=P5=P6**



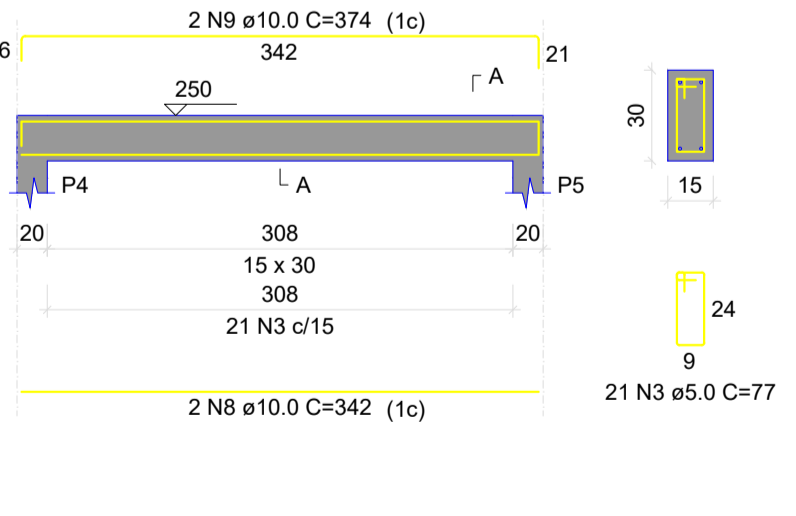
**V1**  
ESC 1:50



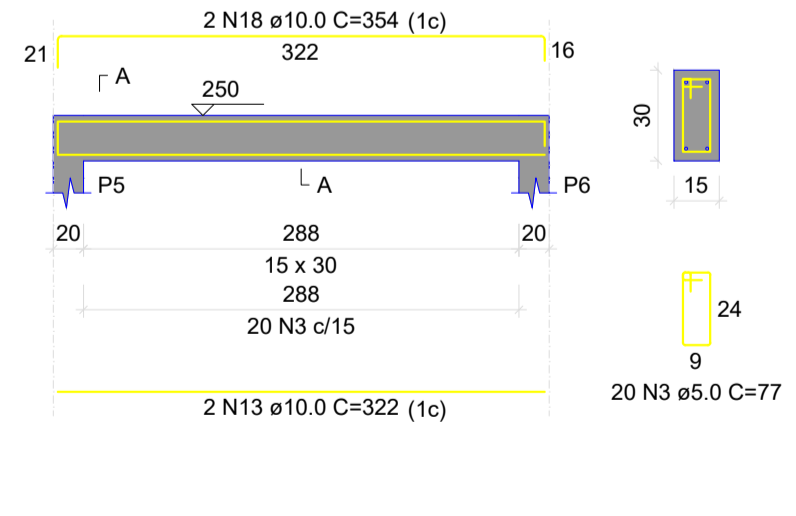
**V2**  
ESC 1:50



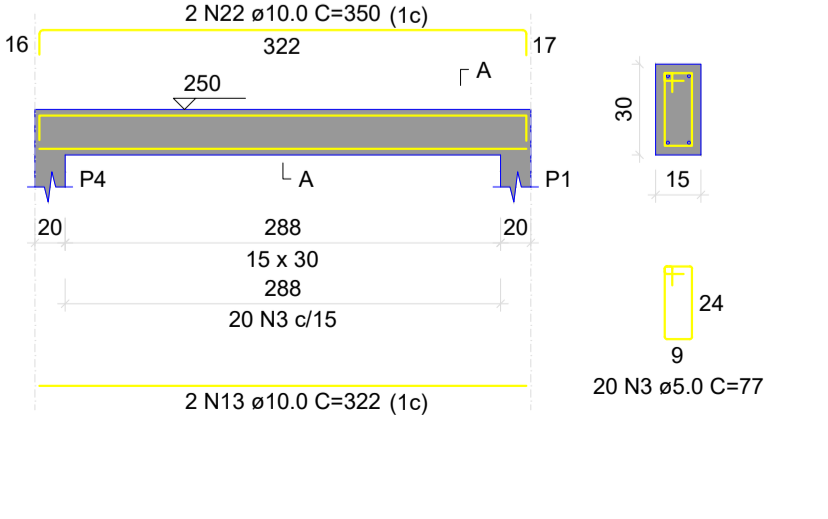
**V3**  
ESC 1:50



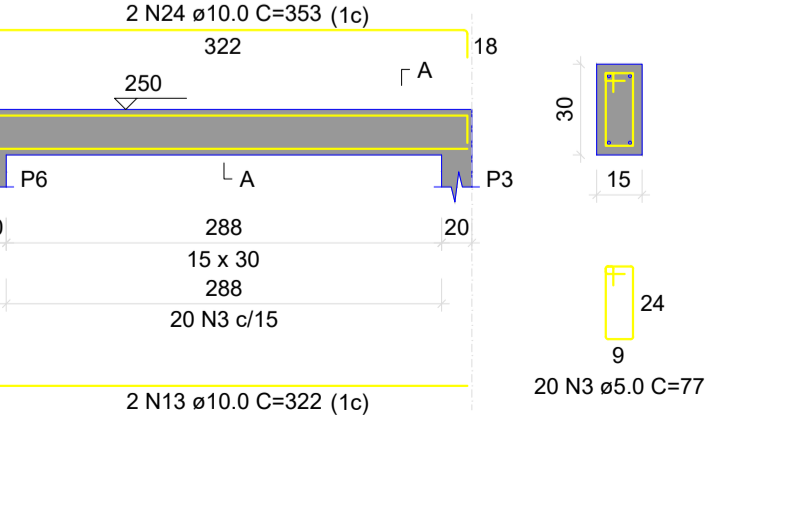
**V4**  
ESC 1:50



**V5**  
ESC 1:50



**V6**  
ESC 1:50



**APROVAÇÃO:**

REVISÃO	DATA	MODIFICAÇÃO
01		
02		
03		
04		
05		
06		
07		

**CLIENTE**  
PREFEITURA MUNICIPAL DE DOVERLÂNDIA

**OBRA**  
CENTRO DE RESERVAÇÃO - ASSENTAMENTO ASES DO ARAGUAIA

**ENDEREÇO**  
RUA JK, QUADRA 65, LOTE 01, SETOR ALTO PARAISO  
DOVERLÂNDIA - GO

**REFERENTE**  
FUNDAÇÃO ABRIGO - SAPATAS, VIGAS, PILARES E QUADROS

**ÁREAS**  
ÁREA: 234 M<sup>2</sup>

**A.R.T.**  
ENG. CIVIL JOÃO IGOR CRUCIOLI  
CREA: 101865485-D-GO

**Francha N°**  
**6/10**

**Desenho**  
JOÃO IGOR CRUCIOLI

**Revisão**  
00

**Tamanho**  
A1

**Escala(s)**  
INDICADA

**Unidade(s)**  
METROS

**Data**  
MARÇO/2028

**ART N°**