

RELAÇÃO DO AÇO

CAÇO	N	DIAM (mm)	QUANT	C.UNIT (cm)	C.TOTAL (cm)
CA00	1	3.0	234	163	38142
CA00	2	6.3	444	164	72916
CA00	3	8.0	46	46	2816
CA00	4	8.0	82	272	25024
CA00	5	10.0	147	147	80907
CA00	6	12.5	74	319	23906
CA00	7	12.5	130	130	72700
CA00	8	12.5	215	215	118485
CA00	9	12.5	202	216	43632
CA00	10	16.0	70	318	22260
CA00	11	16.0	30	318	11660
CA00	12	16.0	184	318	58512
CA00	13	16.0	276	318	87768
CA00	14	16.0	120	318	38160
CA00	15	16.0	276	318	87768

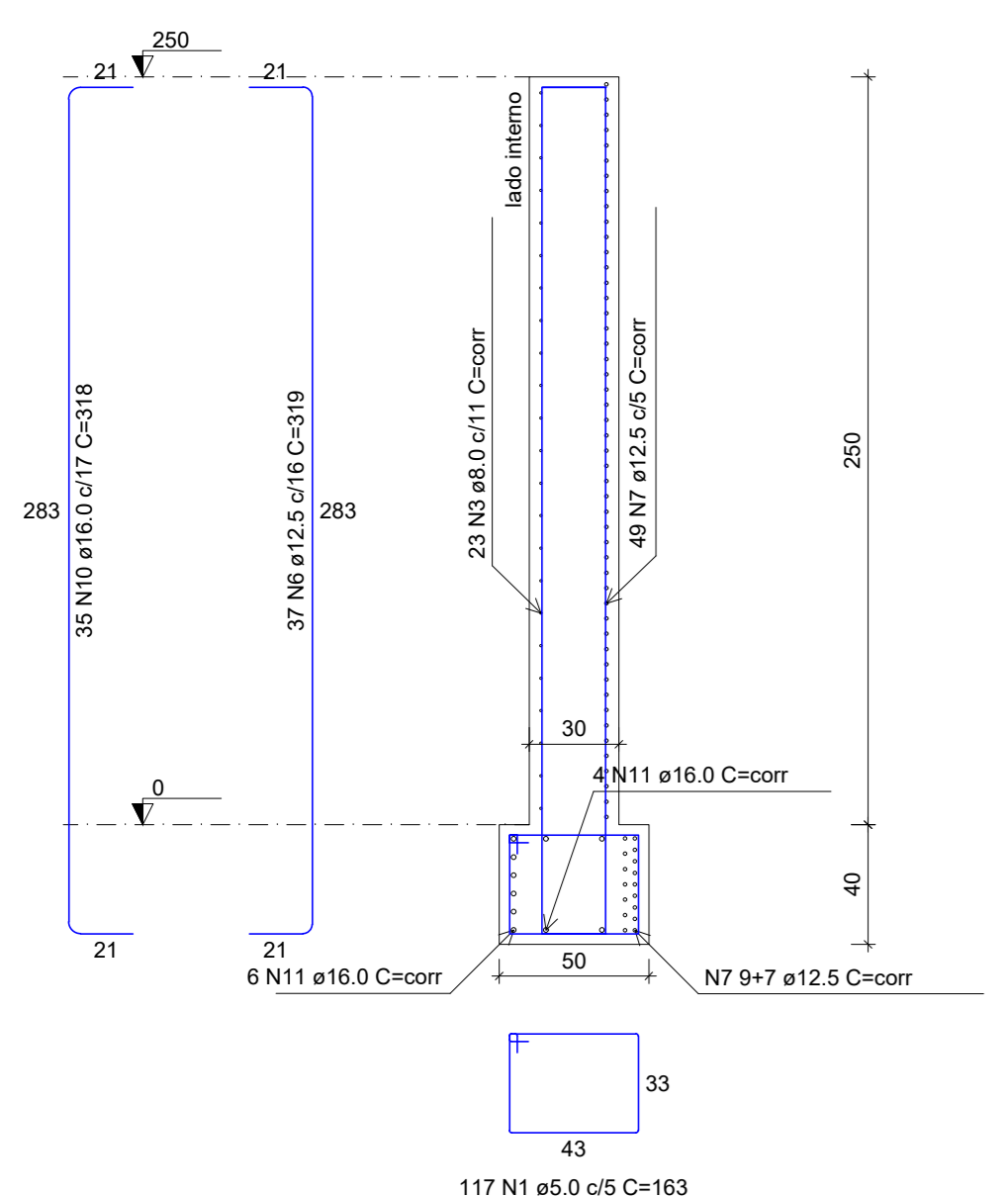
RESUMO DO AÇO

AÇO	DIAM (mm)	C.TOTAL (m)	PESO + 10% (kg)
CA00	6.3	728.2	196
CA00	8.0	516.4	225
CA00	10.0	610	549.3
CA00	12.5	2044.9	2771
CA00	16.0	3335.4	5760.8
CA00	5.0	381.4	64.7

PESO TOTAL (kg)
 CA00 8532.1
 CA00 64.7
 Volume de concreto (C-30) = 32.02 m³
 Área de forma = 212.37 m²

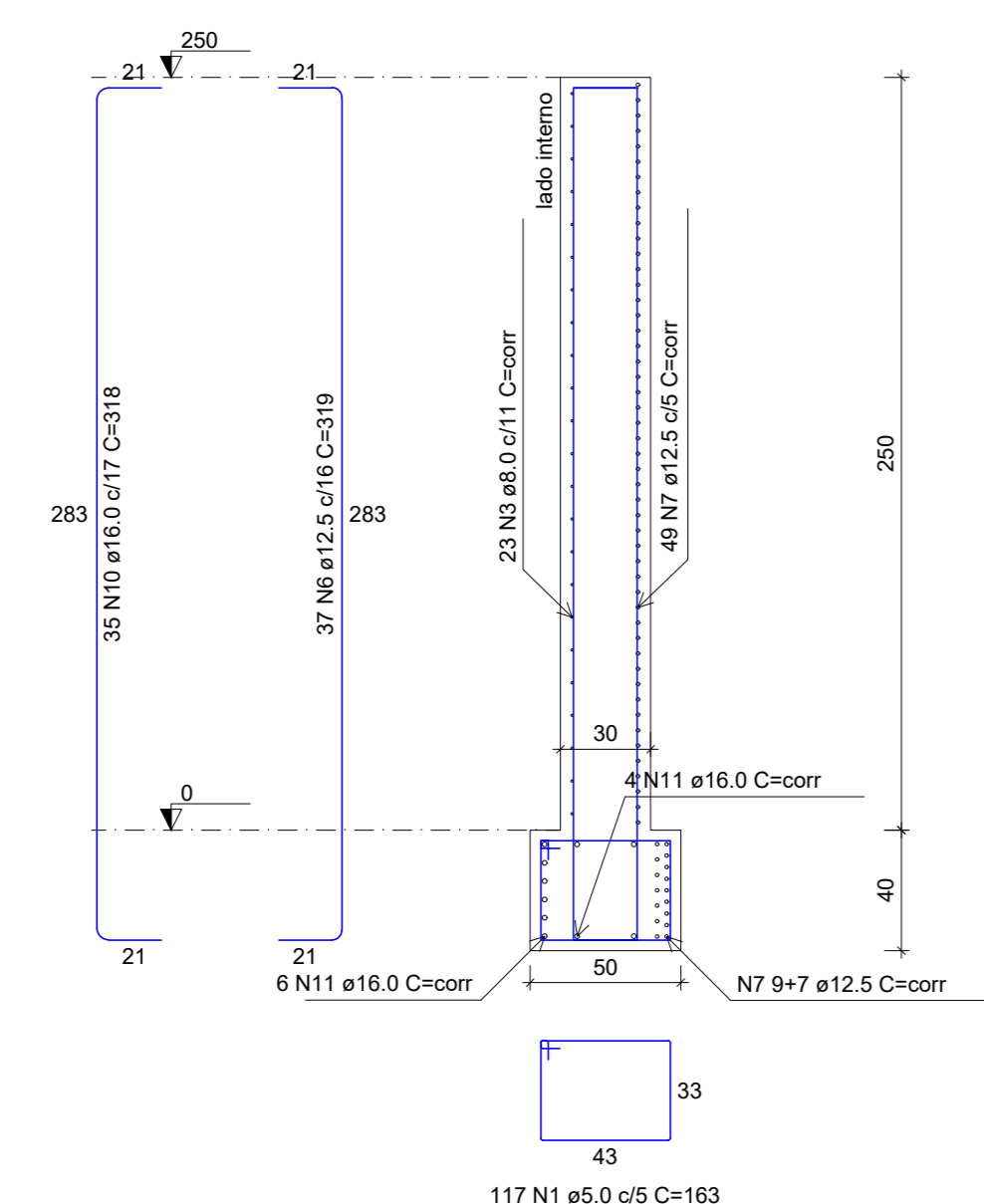
CONTENÇÕES DO PAVIMENTO FUNDAÇÃO

Escala 1:50



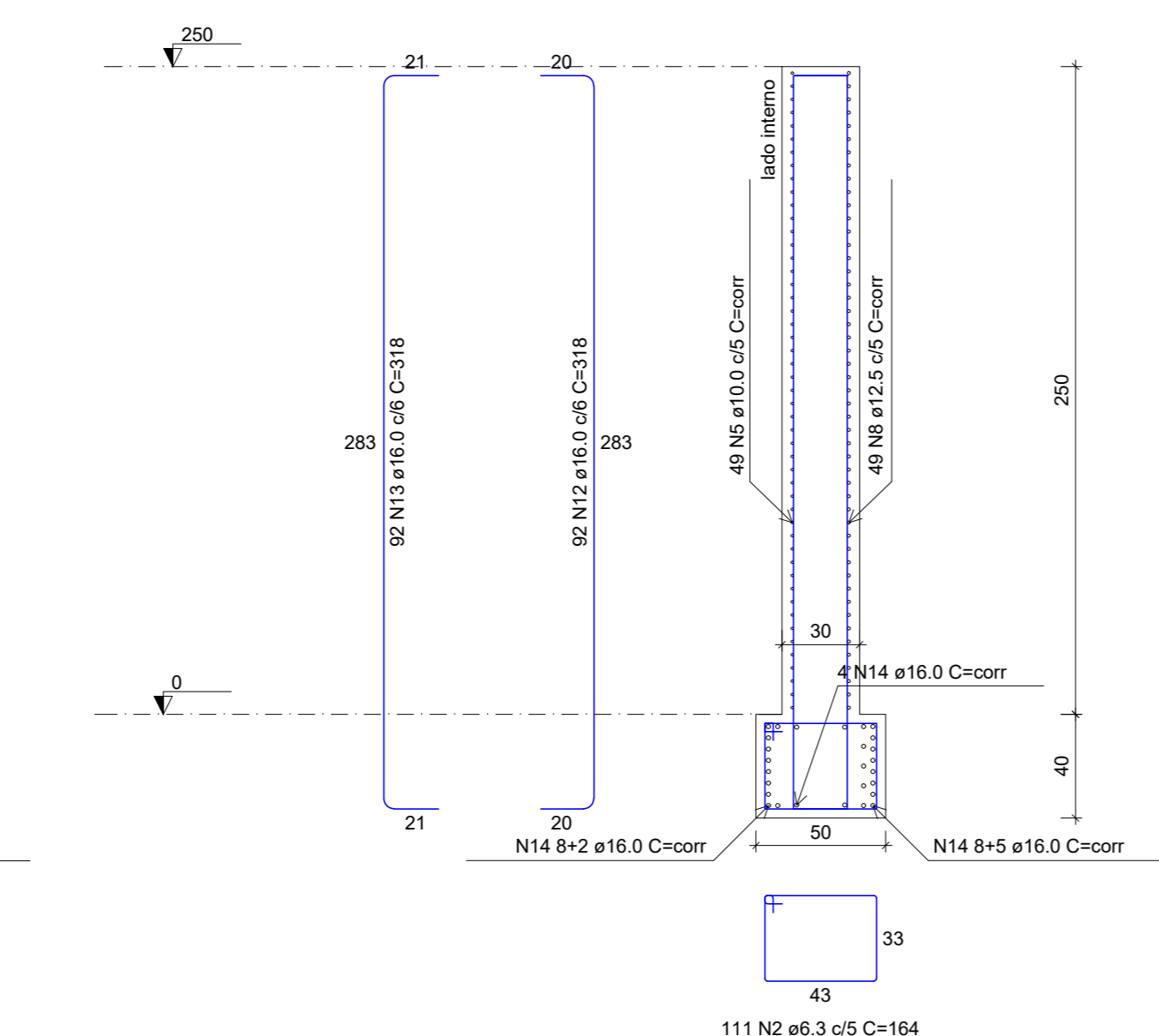
PAR1

ESC 1:25



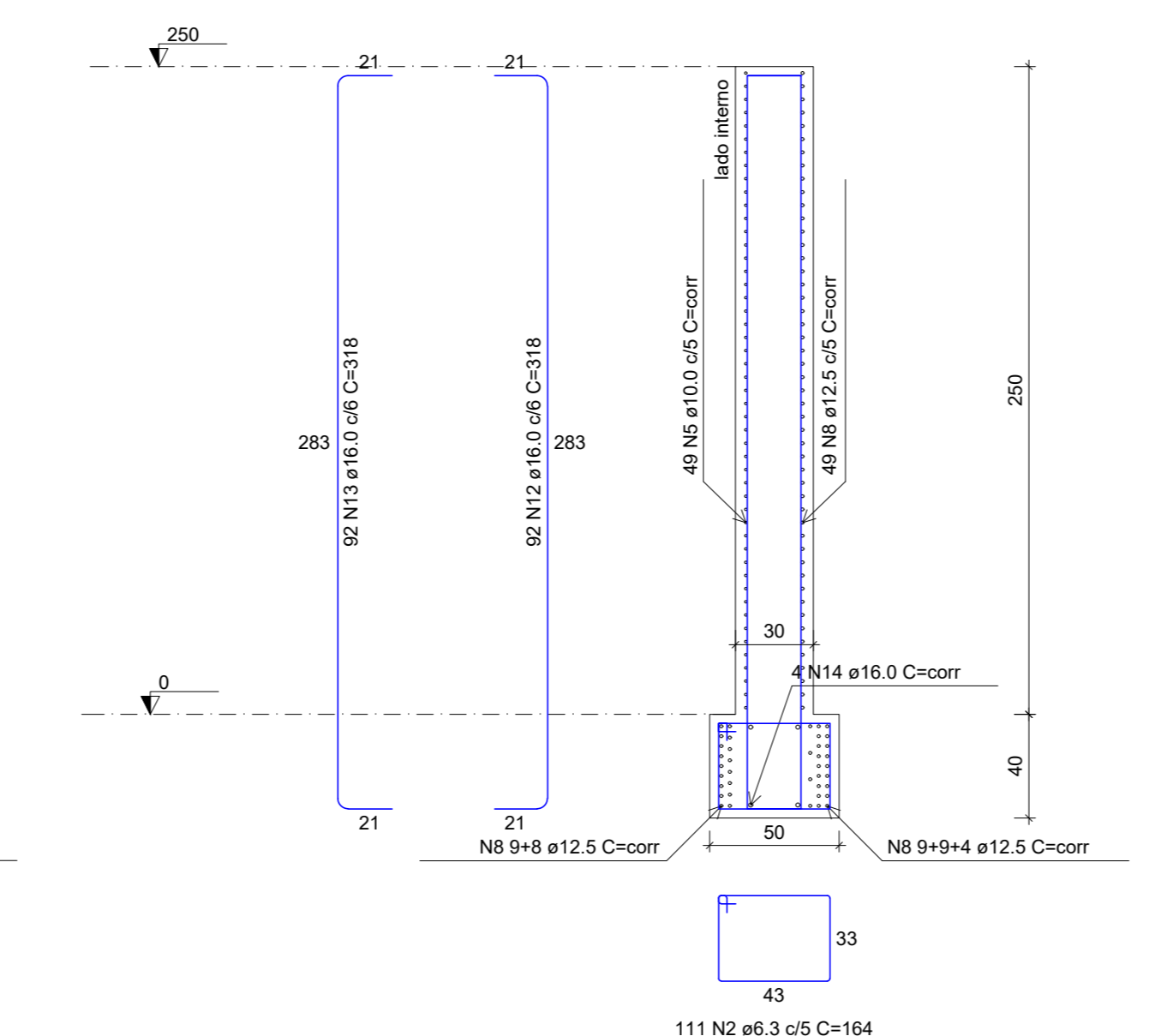
PAR2

ESC 1:25



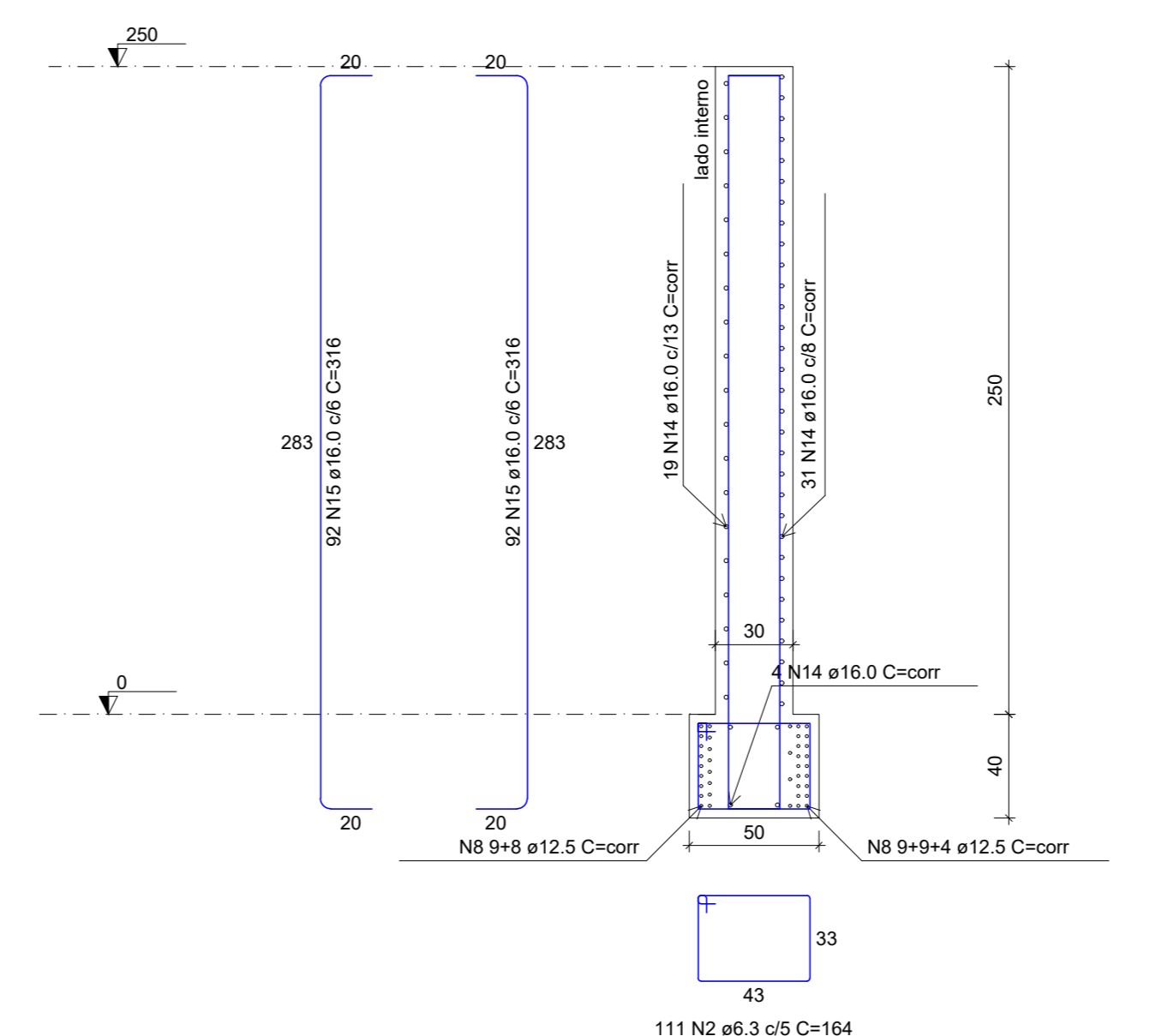
PAR3

ESC 1:25



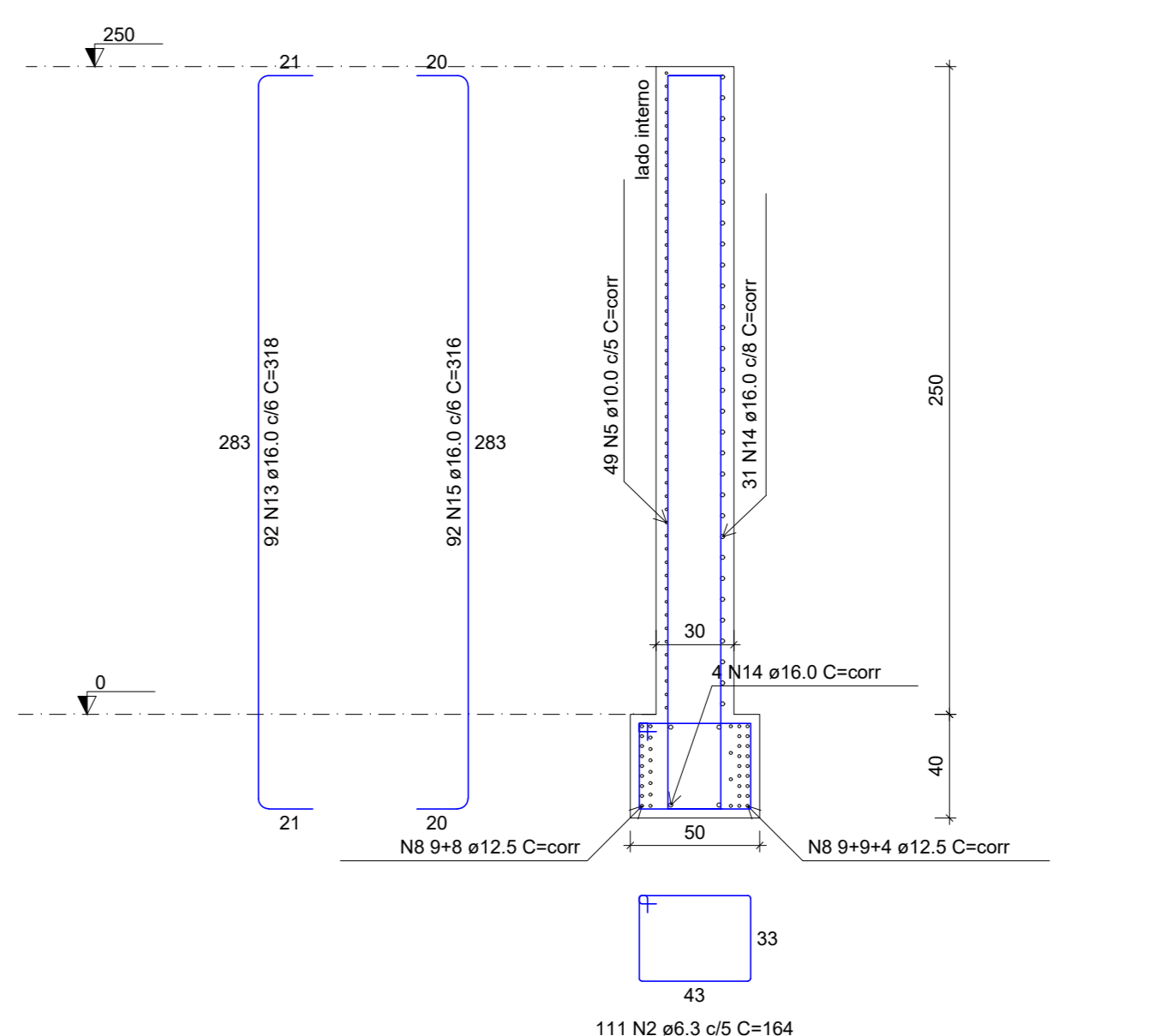
PAR4

ESC 1:25



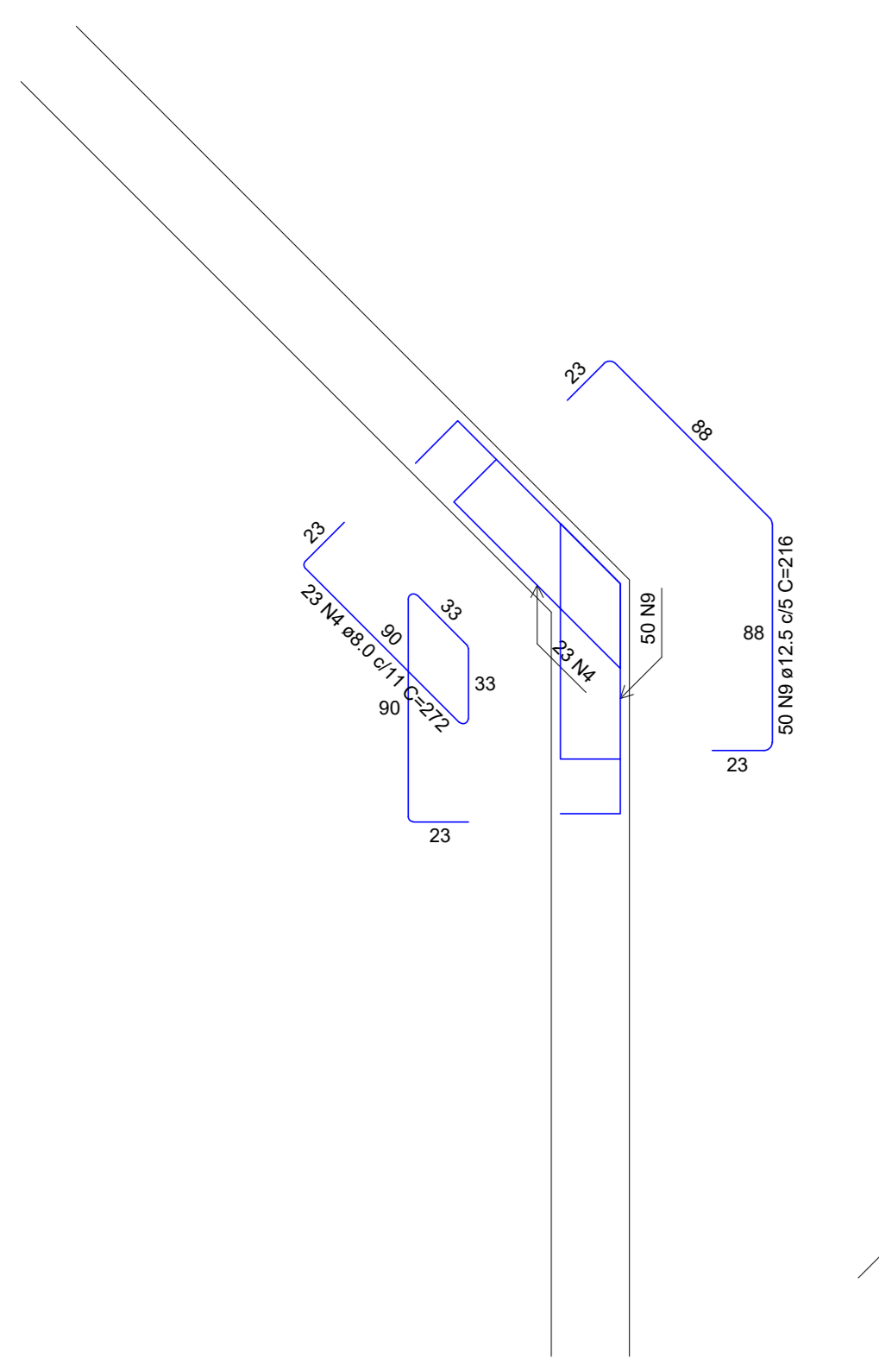
PAR5

ESC 1:25



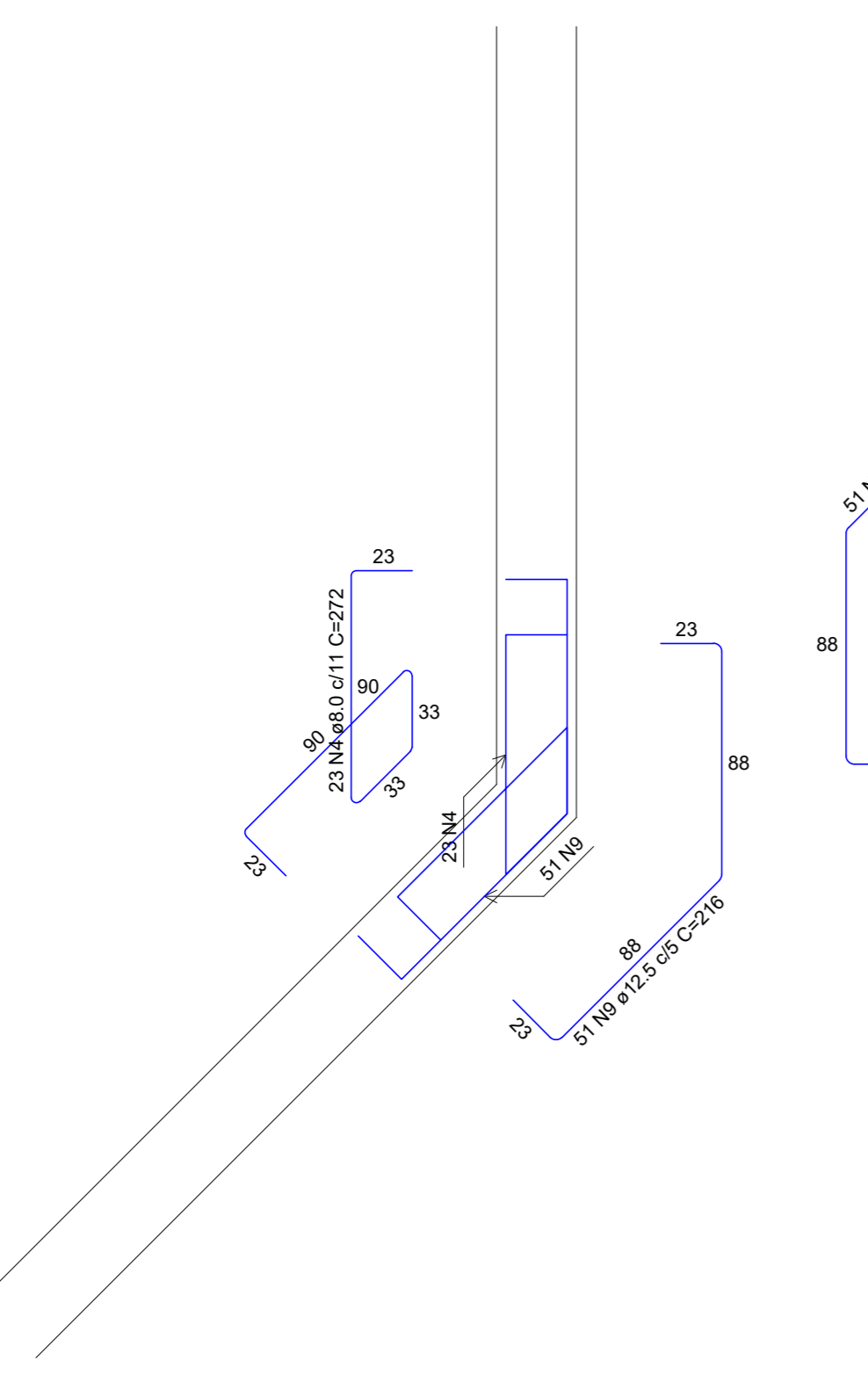
PAR6

ESC 1:25



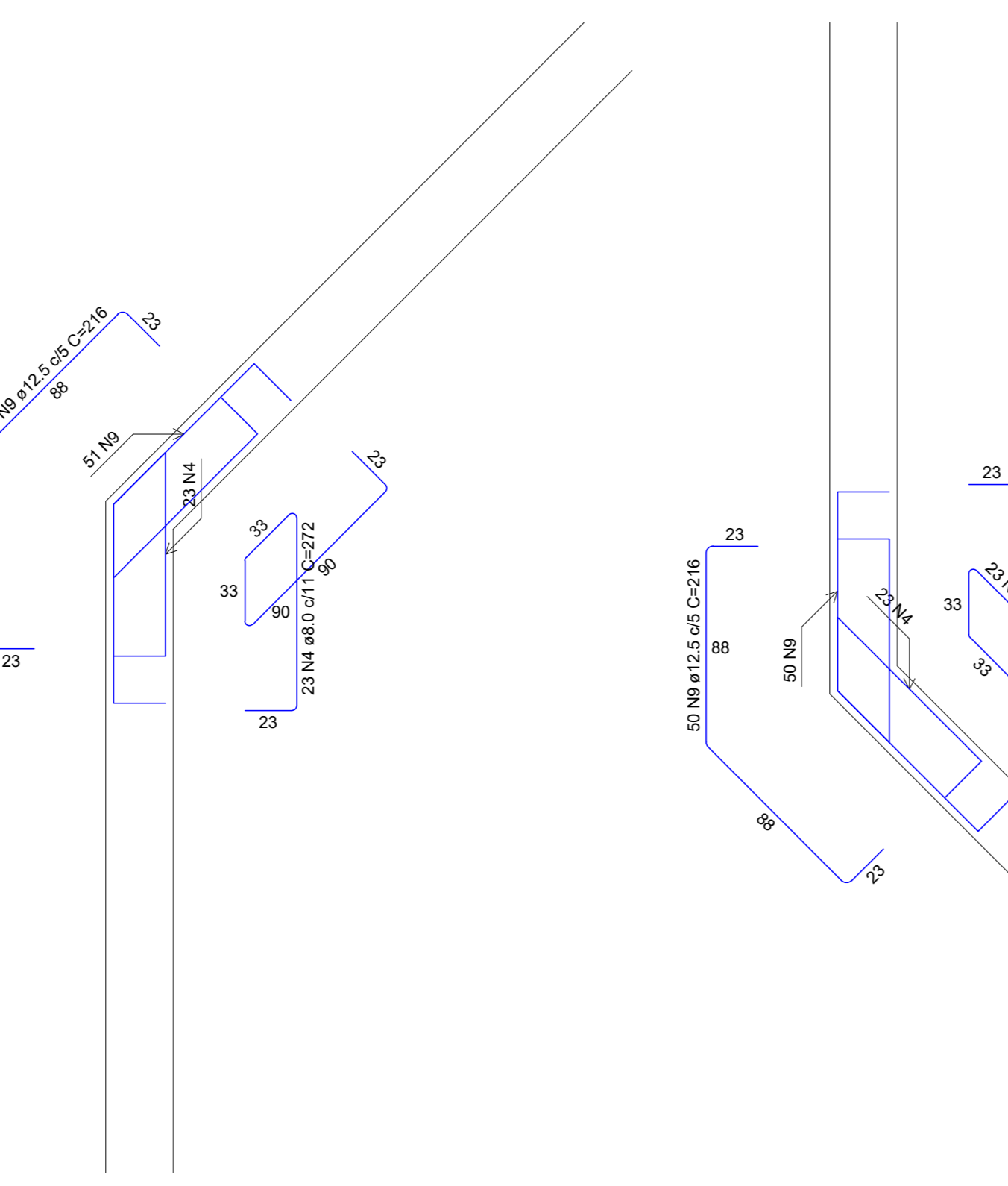
PAR1-PAR3

Escala 1:25



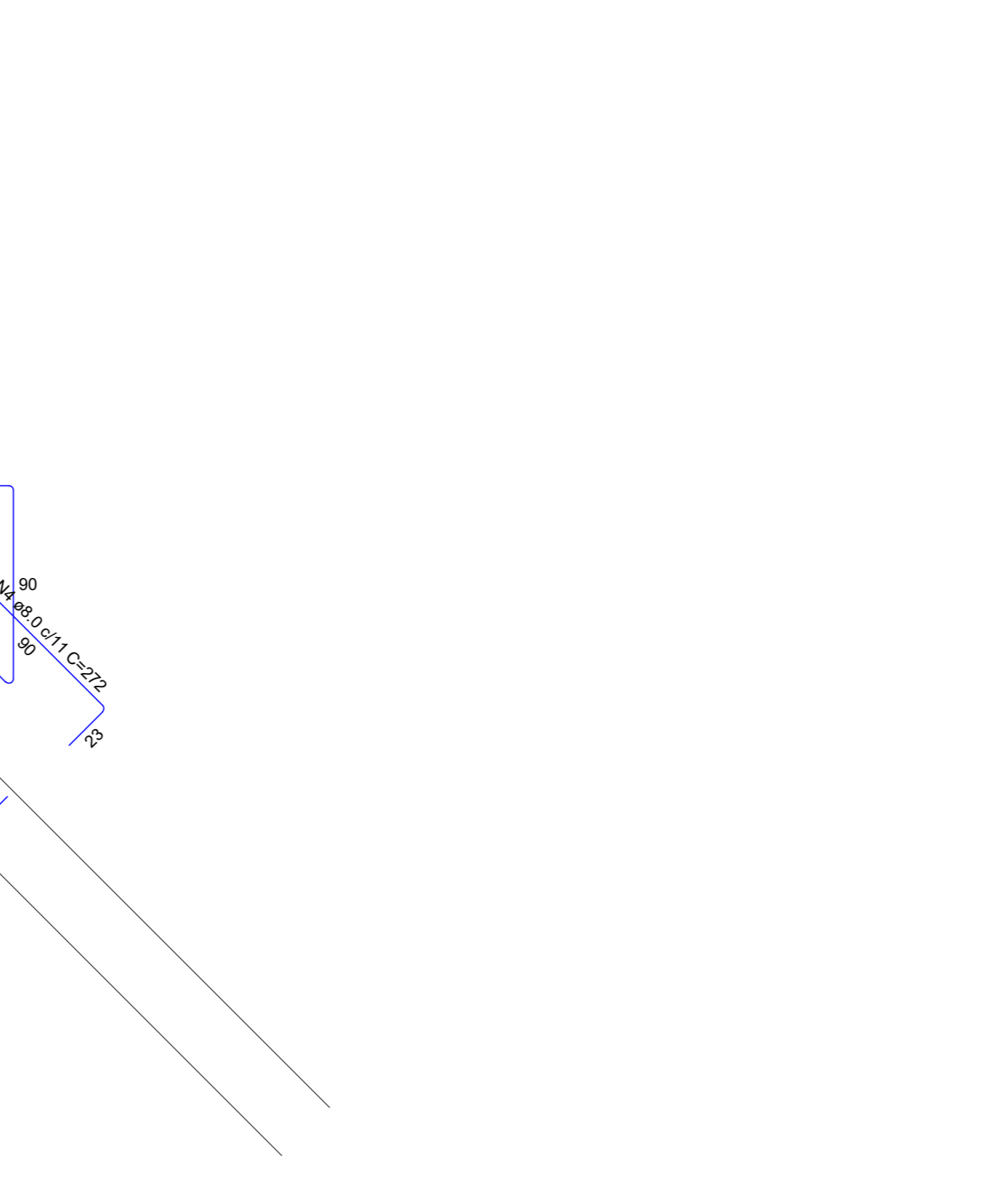
PAR1-PAR6

Escala 1:25



PAR2-PAR4

Escala 1:25



PAR2-PAR5

Escala 1:25

CONTENÇÕES DO PAVIMENTO NÍVEL 1

Escala 1:50

APROVAÇÃO:

REVISÃO	DATA	MODIFICAÇÃO
01		
02		
03		
04		
05		
06		
07		



ESTRUTURAL

CLIENTE: PREFEITURA MUNICIPAL DE DOVERLÂNDIA
 OBRA: PONTE DE CONCRETO ARMADO - CÔRREGO EROINO ONÇA
 ENDEREÇO: ESTRADA MUNICIPAL, 16°37'57.49"S 52°37'17.81"W - ZONA RURAL RETIRO VELHO (DOVERLÂNDIA) - GO
 REFERENTE: ARMADURA CORTINAS

ÁREAS: ÁREA CONSTRUÍDA TOTAL: 108,91 m²

A.R.T.: Prancha N°
 ENG. RENAN LUIZ DA SILVA DE JESUS
 PREFEITURA MUNICIPAL DE DOVERLÂNDIA
 CNPJ: 10.980.293/00-00