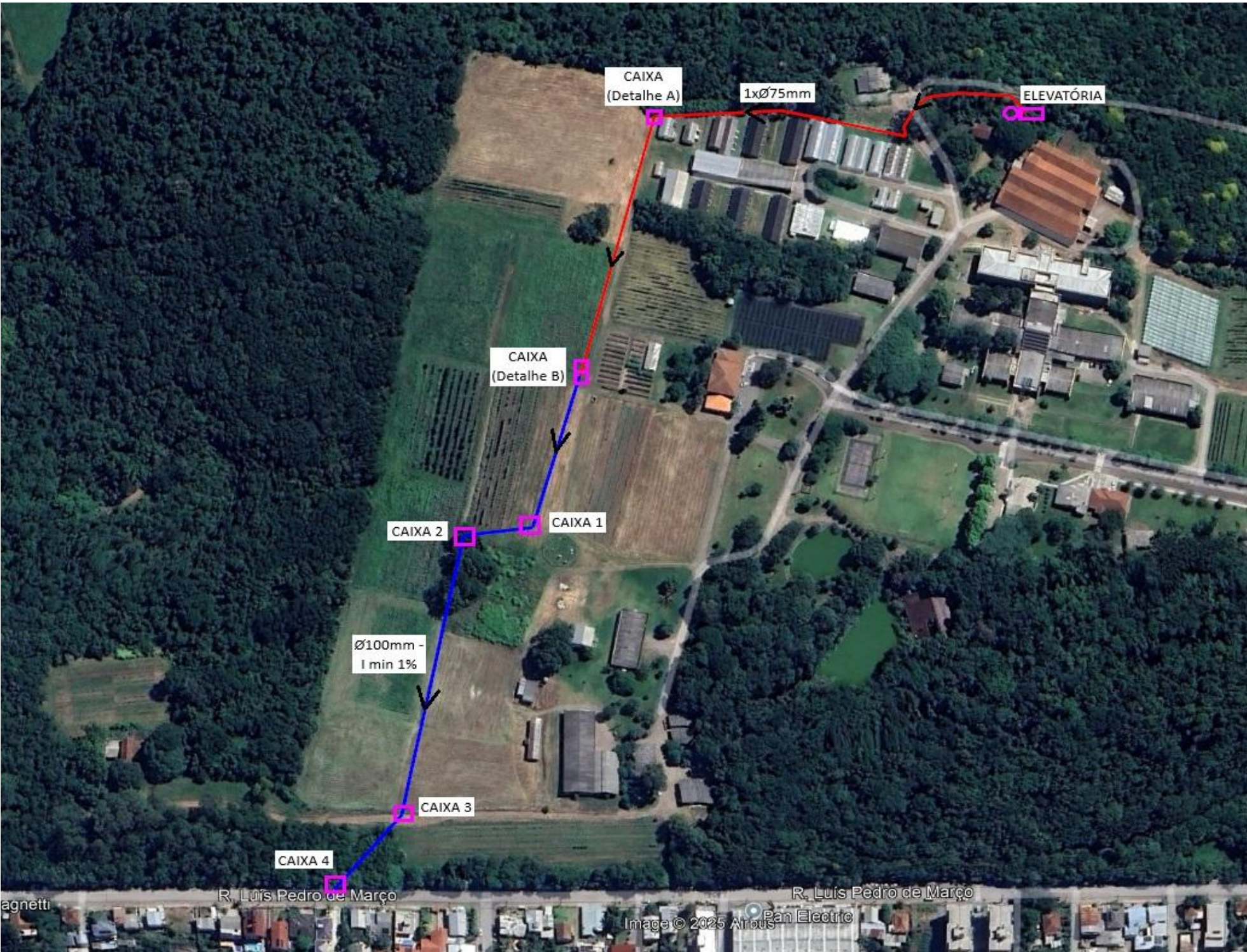
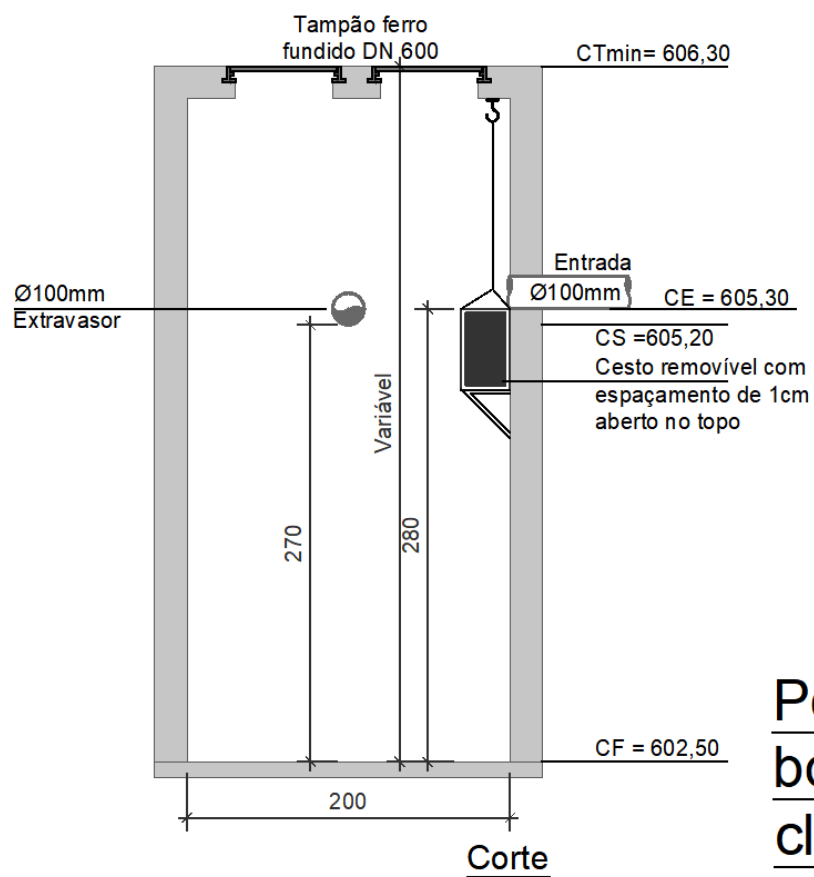
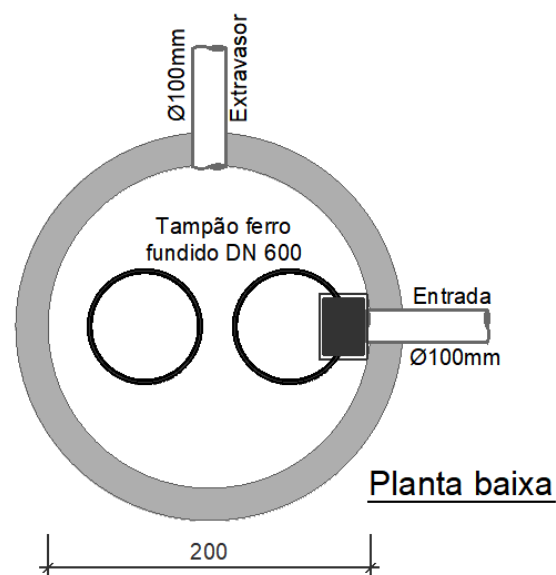




Croqui com a representação do nível do terreno no trajeto sugerido.



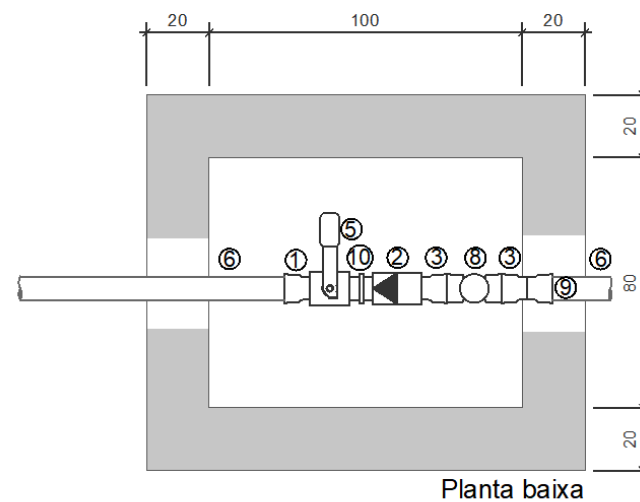
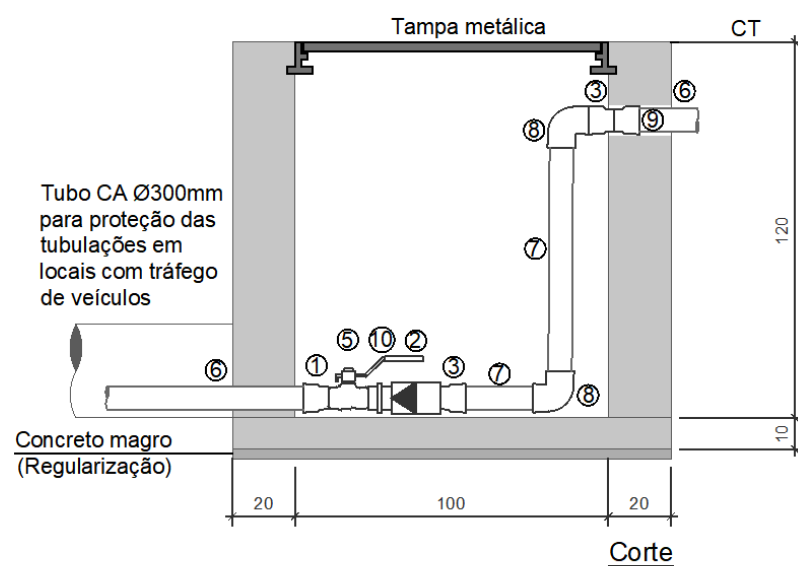
Detalhamento do trajeto e das caixas e equipamentos a serem instalados.



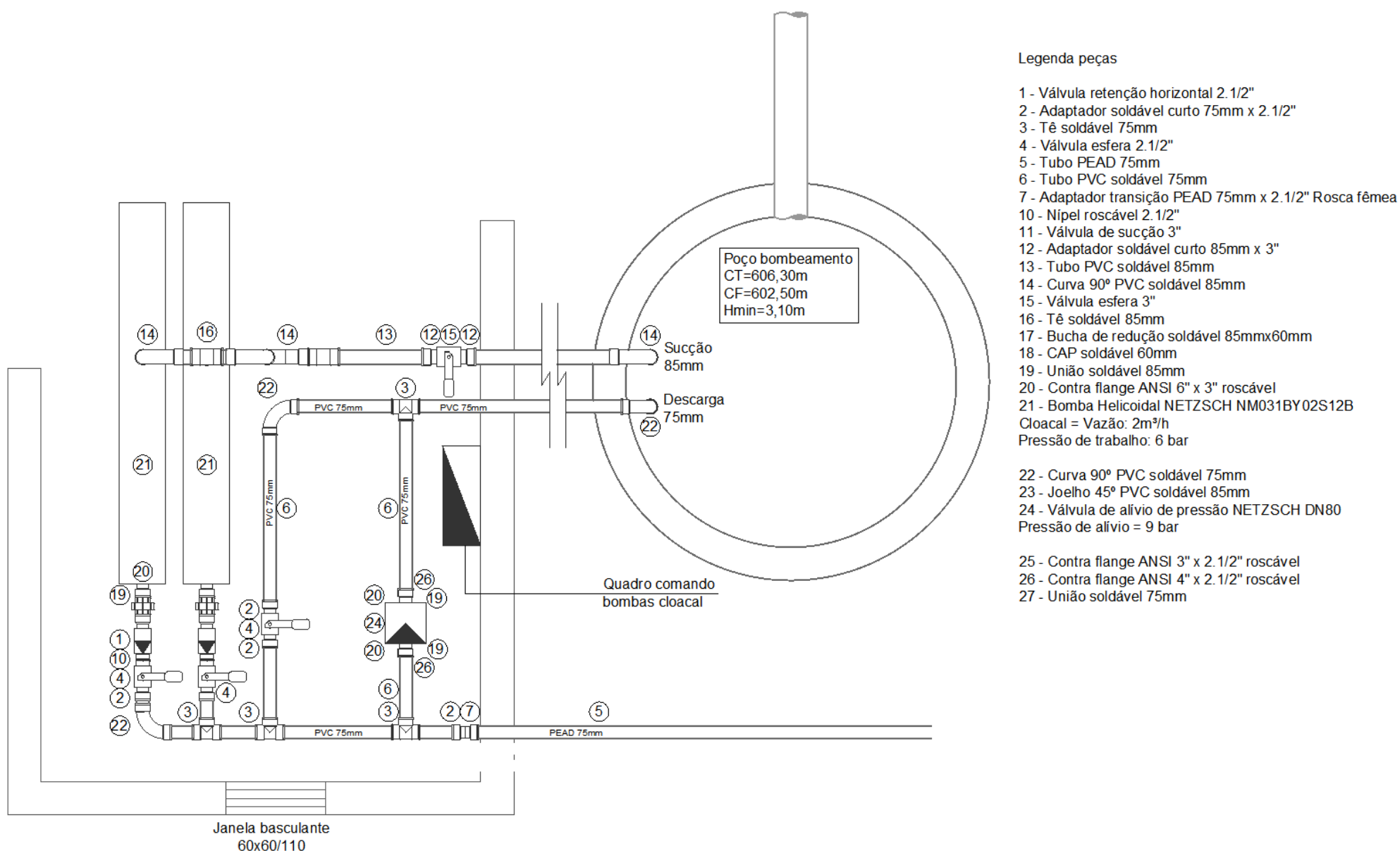
**Poço
bombeamento
cloacal**
ESCALA 1:50

Legenda peças

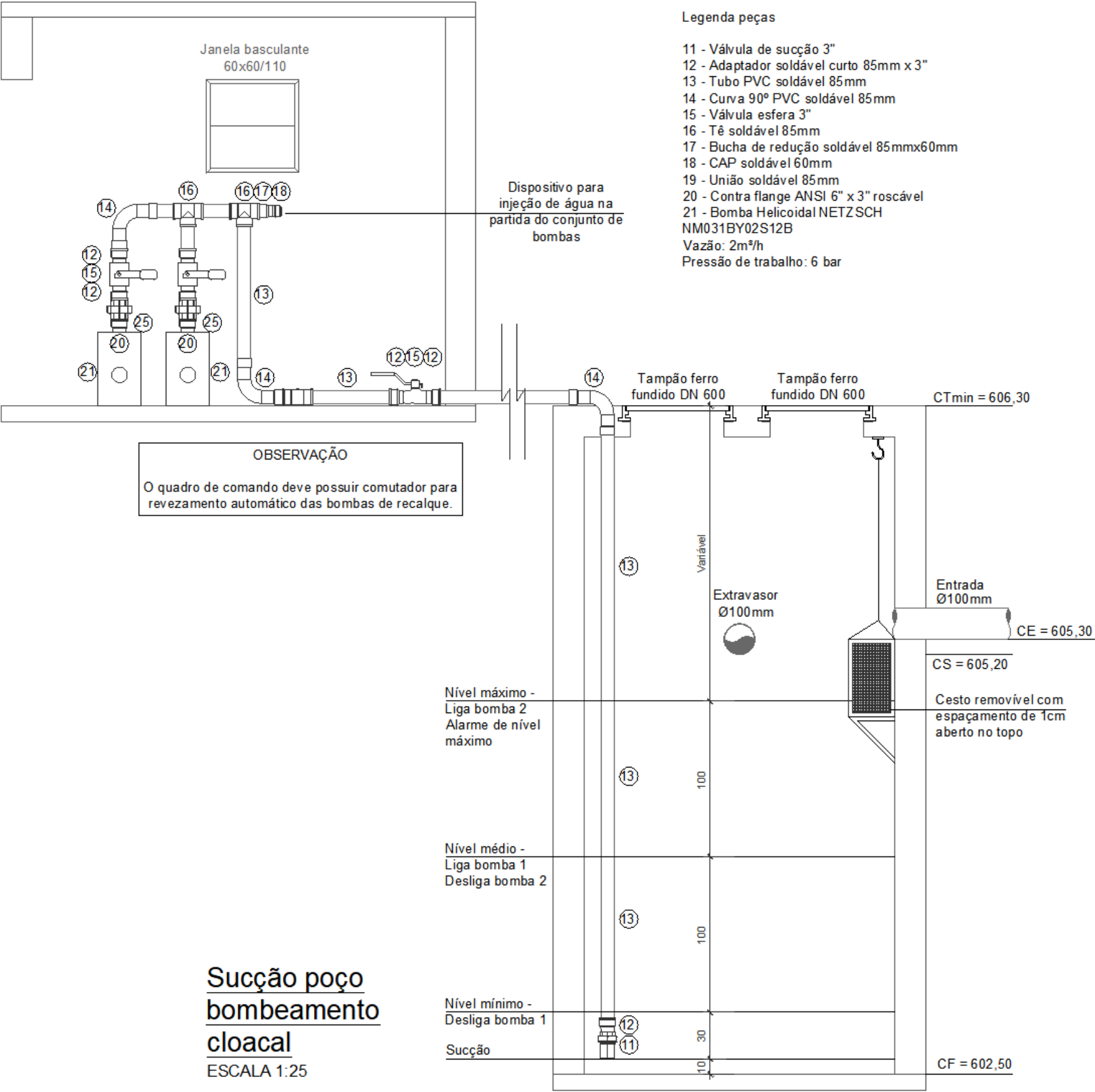
- 1 - Adaptador transição PEAD 75mm x 2.1/2" Rosca macho
- 2 - Válvula retenção horizontal 2.1/2"
- 3 - Adaptador soldável curto 75mm x 2.1/2"
- 5 - Válvula esfera 2.1/2"
- 6 - Tubo PEAD 75mm
- 7 - Tubo PVC soldável 75mm
- 8 - Joelho 90° PVC soldável 75mm
- 9 - Adaptador transição PEAD 75mm x 2.1/2" Rosca fêmea
- 10 - Nípel roscável 2.1/2"

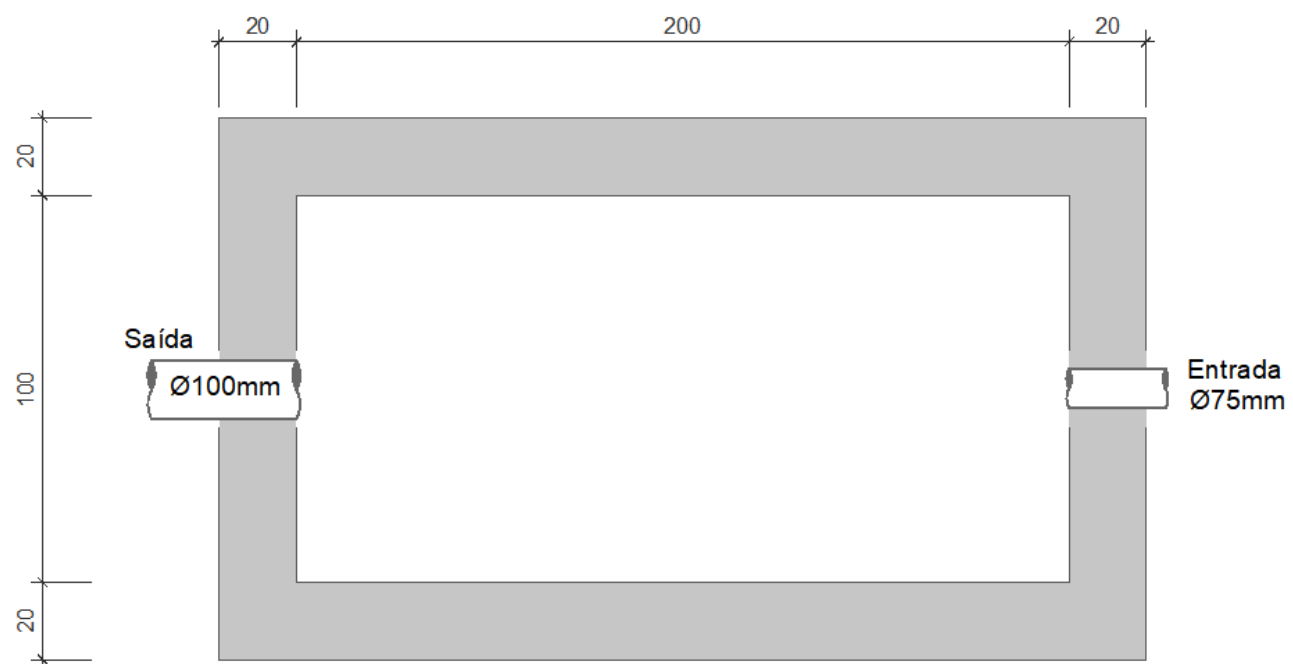


**Caixa entrada travessia
com válvula esfera e
válvula de retenção
(DETA)**
ESCALA 1:20

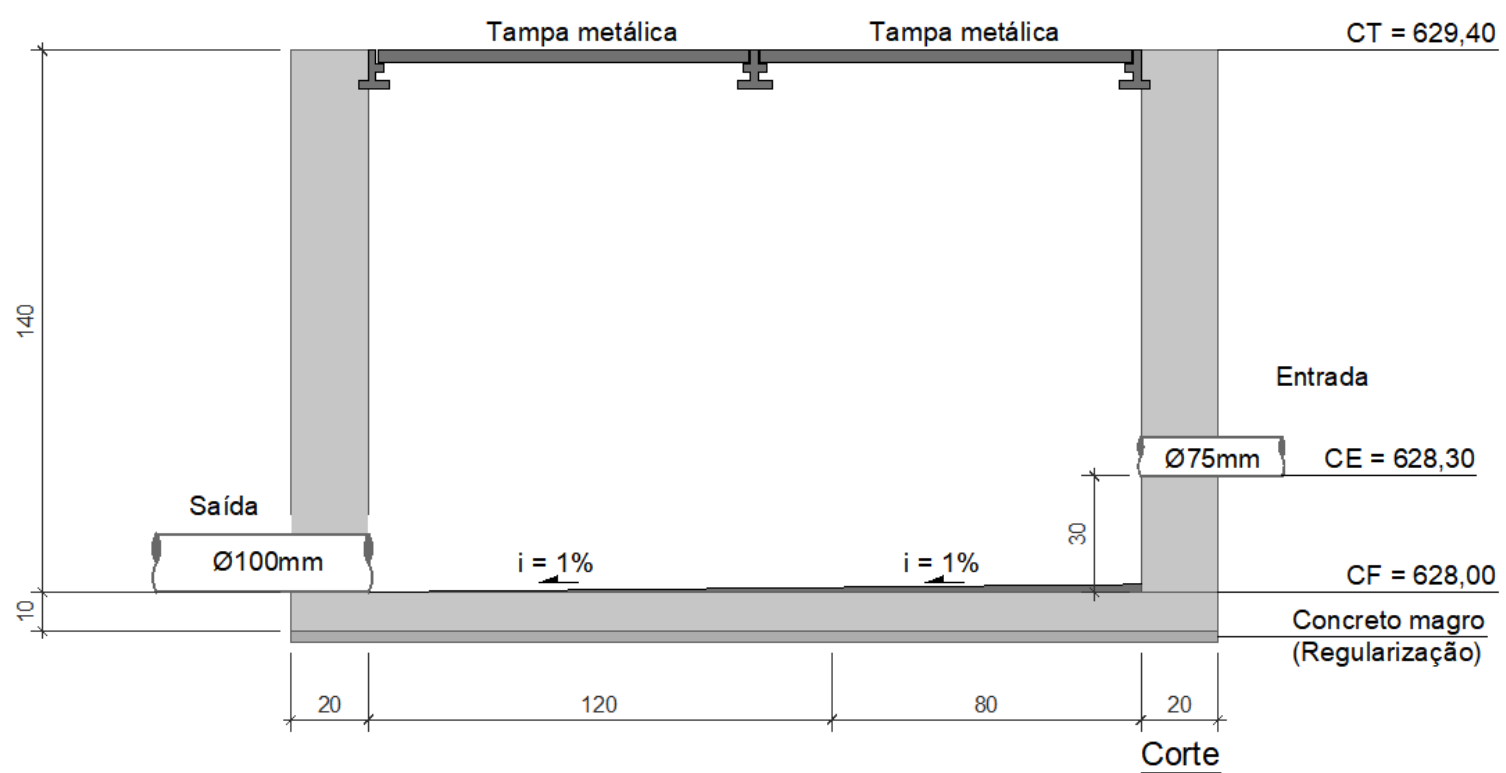


Planta baixa casa de bombas
ESCALA 1:25





Planta baixa



Caixa de Passagem
(DET B)
ESCALA 1:20