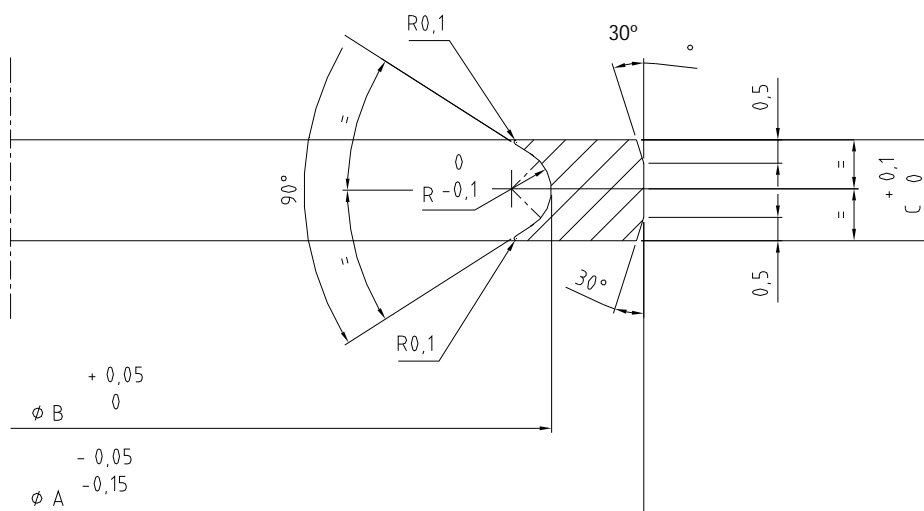


Materials

Anel Externo	Politetrafluoretileno (PTFE) estabilizado e sem regeneradores
O-ring	Borracha Nitrílica NBR (acrilonitrila e butadieno) 20A8 conforme NF L 17-120 e ISO 3601-1
Anel Interno	<p>RUCH Seal OD 10.20 para manômetros Aço inoxidável austenítico X1 NiCrMoCu 25-20-5 (1.4539) conforme NF EN 10088-3 ou NF EN 10216-5</p> <p>RUCH seal OD 10.20: Aço inoxidável austenítico X2 CrNi 18-9 (1.4307) conforme NF EN 10088-3 ou NF EN 10216-5</p>

Descrição	Componentes
RUCH Seal ring ED 10.20 Para manômetros	Anel Externo
	O-ring 8.90 x 1.90 - 20A8 GN / 5331 14 313 5475
	Anel Interno
RUCH Seal ring ED 10.20	Anel Externo
	O-ring 10.50 x 2.70 - 20A8 GN / 5331 14 313 5477
	Anel Interno
RUCH Seal ring ED 13.72	Anel Externo
	O-ring 13.60 x 2.70 - 20A8 GN / 5331 14 479 6424
	Anel Interno
RUCH Seal ring ED 17.15	Anel Externo
	O-ring 16.90 x 2.70 - 20A8 GN / 5331 14 313 5481
	Anel Interno
RUCH Seal ring ED 21.34	Anel Externo
	O-ring 23.00 x 3.60 - 20A8 GN / 5331 14 481 9058
	Anel Interno
RUCH Seal ring ED 26.67	Anel Externo
	O-ring 26.20 x 3.60 - 20A8 GN / 5331 14 313 5488
	Anel Interno
RUCH Seal ring ED 33.40	Anel Externo
	O-ring 34.10 x 3.60 - 20A8 GN / 5331 14 313 5493
	Anel Interno
RUCH Seal ring ED 42.16	Anel Externo
	O-ring 43.82 x 5.33 - 20A8 GN / 5331 14 313 5498
	Anel Interno
RUCH Seal ring ED 48.26	Anel Externo
	O-ring 50.17 x 5.33 - 20A8 GN / 5331 14 313 5500
	Anel Interno
RUCH Seal ring ED 57.00	Anel Externo
	O-ring 56.52 x 5.33 - 20A8 GN / 5331 14 313 5502
	Anel Interno
RUCH Seal ring ED 60.30	Anel Externo
	O-ring 53.34 x 5.33 - 20A8 GN / 5331 14 313 5501
	Anel Interno
RUCH Seal ring ED 76.10	Anel Externo
	O-ring 69.22 x 5.33 - 20A8 GN / 5331 14 313 5506
	Anel Interno
RUCH Seal ring ED 88.90	Anel Externo
	O-ring 91.44 x 5.33 - 20A8 GN / 5331 14 479 6423
	Anel Interno

Anel Externo



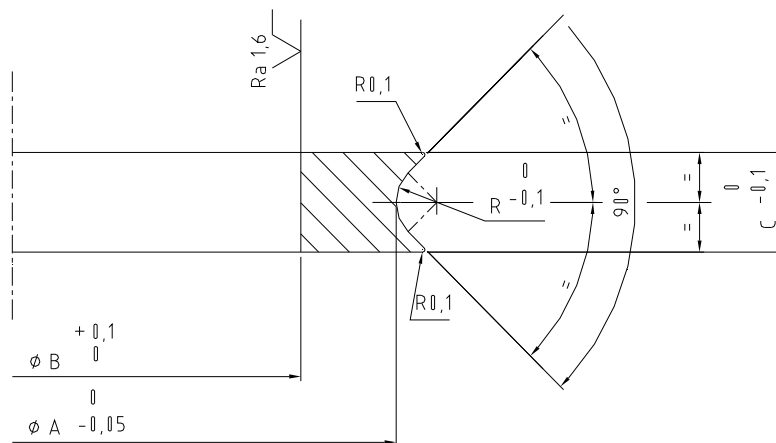
	ϕA	ϕB	C	R
RUCH Seal ring ED 10.20 para manômetros	17.5	13.08	1.52	0.60
RUCH Seal ring ED 10.20	21	17.00	2.16	0.90
RUCH Seal ring ED 13.72	24	19.76	2.16	0.90
RUCH Seal ring ED 17.15	27	23.06	2.16	0.90
RUCH Seal ring ED 21.34	36	30.70	2.88	1.20
RUCH Seal ring ED 26.67	42	36.05	2.88	1.20
RUCH Seal ring ED 33.40	49	41.65	2.88	1.20
RUCH Seal ring ED 42.16	61	55.46	4.26	1.80
RUCH Seal ring ED 48.26	67	61.58	4.26	1.80
RUCH Seal ring ED 57.00	77	69.58	4.26	1.80
RUCH Seal ring ED 60.30	76.5	65.06	4.26	1.80
RUCH Seal ring ED 76.10	86.5	82.98	4.26	1.80
RUCH Seal ring ED 88.90	112	103.20	4.26	1.86

Tolerâncias geraiss: ISO 2768-m (*)

Condição de superfície: Ra 1.6.

(*) NF EN 22768-1

Anel Interno



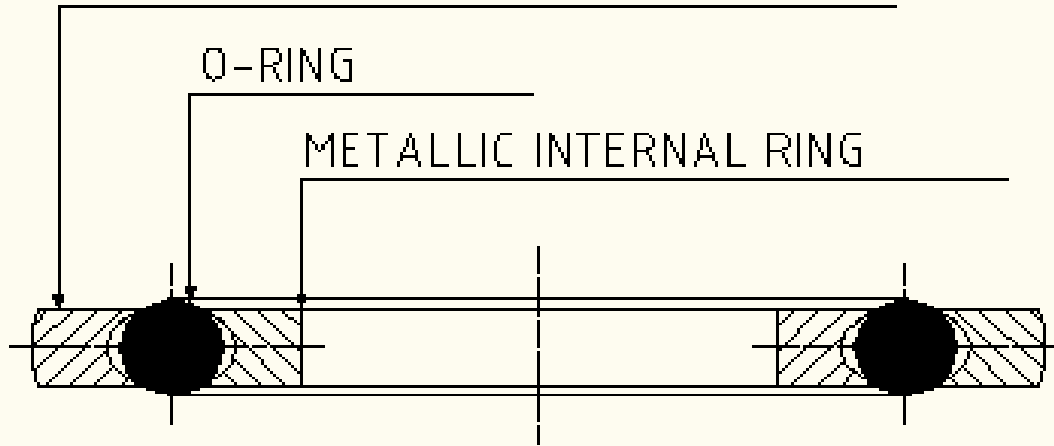
	ϕA	ϕB	C	R
RUCH Seal ring ED 10.20 para manômetros	8.67	3.00	1.52	0.60
RUCH Seal ring ED 10.20	10.74	7.20	2.16	0.90
RUCH Seal ring ED 13.72	13.50	9.40	2.16	0.90
RUCH Seal ring ED 17.15	16.80	12.70	2.16	0.90
RUCH Seal ring ED 21.34	22.35	17.25	2.88	1.20
RUCH Seal ring ED 26.67	27.70	22.60	2.88	1.20
RUCH Seal ring ED 33.40	33.30	28.20	2.88	1.20
RUCH Seal ring ED 42.16	43.10	37.00	4.26	1.80
RUCH Seal ring ED 48.26	49.22	43.12	4.26	1.80
RUCH Seal ring ED 57.00	57.22	51.12	4.26	1.80
RUCH Seal ring ED 60.30	52.70	44.40	4.26	1.80
RUCH Seal ring ED 76.10	70.62	67.1	4.26	1.80
RUCH Seal ring ED 88.90	90.94	82.84	4.26	1.86

Tolerâncias Gerais: ISO 2768-m (*)
 Condição de superfície: $Ra 0.8$.

(*) NF EN 22768-1

NON METALLIC EXTERNAL RING

STF-33-07-02-039E

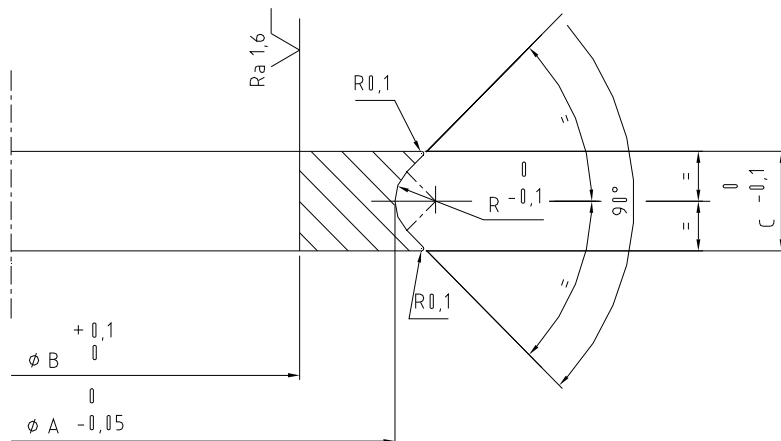


Anel Externo	Politetrafluoretileno (PTFE) estabilizado e sem regeneradores
O-ring	Borracha Nitrílica NBR (acrilonitrila e butadieno) 20A8 conforme NF L 17-120 e ISO 3601-1
Anel Interno	Liga de cobre-níquel 70-30 (CuNi30Mn1Fe na condição metalúrgica R370 recozido ou CW354H conforme EN 1652 / EN DIN 2.0882 conforme DIN 17664 / UNS C71500 conforme ASTM B122)

Descrição	Estrutura
RUCH ND 6	Anel Externo
	O-ring 11.20 x 1.80 - 20A8 AN / 5331 14 414 5862
	Anel Interno
RUCH ND 8	Anel Externo
	O-ring 14.00 x 1.80 - 20A8 AN / 5331 14 414 5864
	Anel Interno
RUCH ND 10	Anel Externo
	O-ring 18.00 x 1.80 - 20A8 AN / 5331 14 414 5867
	Anel Interno
RUCH ND 15	Anel Externo
	O-ring 23.60 x 2.65 - 20A8 AN / 5331 14 414 5875
	Anel Interno
RUCH ND 20	Anel Externo
	O-ring 28.00 x 2.65 - 20A8 AN / 5331 14 414 5881
	Anel Interno
RUCH ND 32	Anel Externo
	O-ring 45.00 x 3.55 - 20A8 AN / 5331 14 414 5897
	Anel Interno
RUCH ND 40	Anel Externo
	O-ring 50.00 x 3.55 - 20A8 AN / 5331 14 414 5901
	Anel Interno

ANEL INTERNO

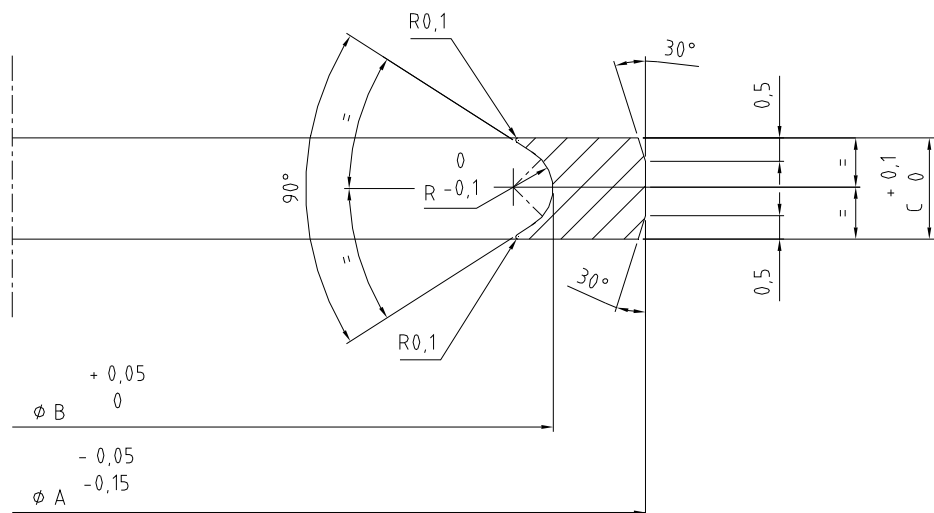
Tolerâncias Gerais: ISO 2768-m
Condição de Superfície Ra 0.8



	ϕA	ϕB	C	R
RUCH ND 6	10.98	6.90	1.44	0.6
RUCH ND 8	13.70	10.40	1.44	0.6
RUCH ND 10	17.70	13.80	1.44	0.6
RUCH ND 15	23.20	18.00	2.12	0.9
RUCH ND 20	27.60	21.88	2.12	0.9
RUCH ND 32	44.50	37.38	2.84	1.2
RUCH ND 40	49.40	42.76	2.84	1.2

ANEL EXTERNO

Tolerâncias Gerais: ISO 2768-m
Condição de Superfície: Ra 1.6.



	ϕA	ϕB	C	R
RUCH ND 6	21	15.2	1.44	0.6
RUCH ND 8	24	17.9	1.44	0.6
RUCH ND 10	27	21.9	1.44	0.6
RUCH ND 15	36	29.4	2.12	0.9
RUCH ND 20	42	33.8	2.12	0.9
RUCH ND 32	61	52.8	2.84	1.2
RUCH ND 40	67	57.7	2.84	1.2