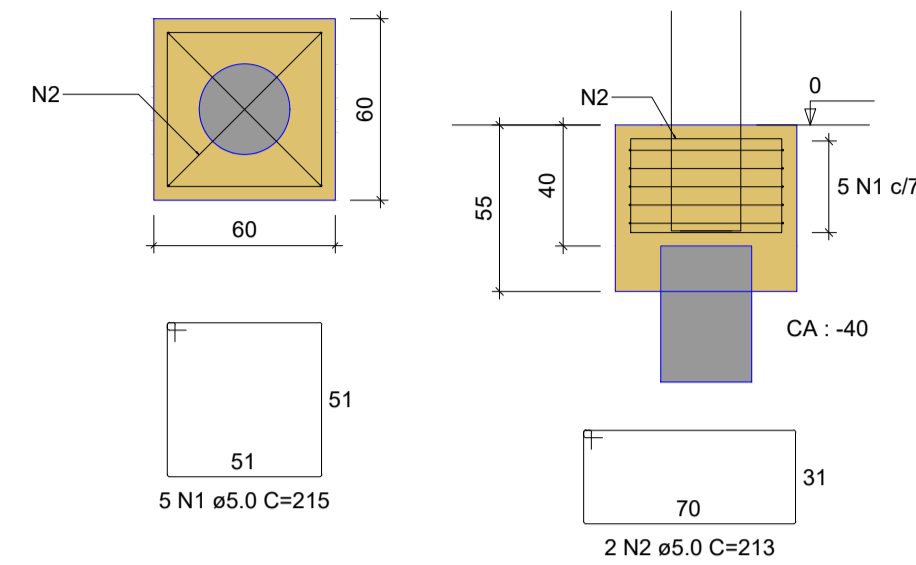
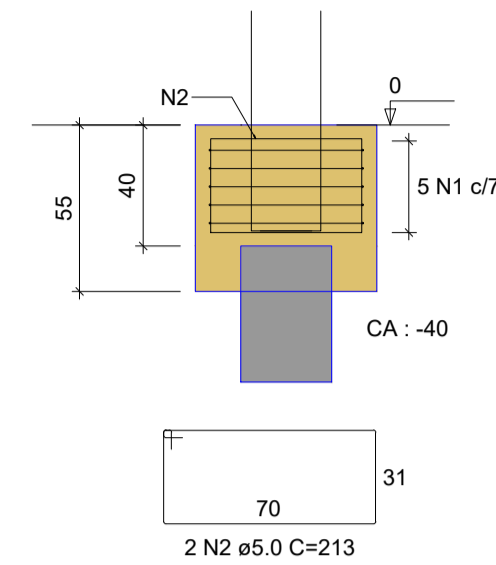


B1=B2=B3=B4=B5=B6=B7=B8

1xC30  
PLANTA  
ESC 1:25

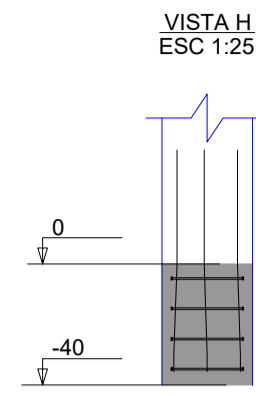
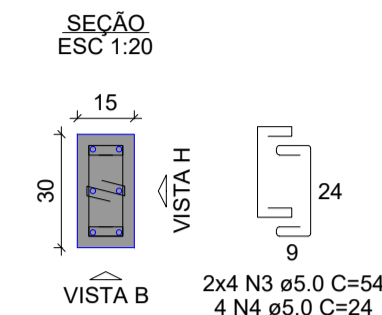


CORTE  
ESC 1:25



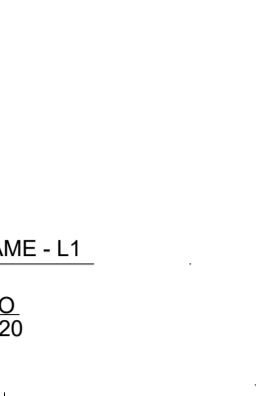
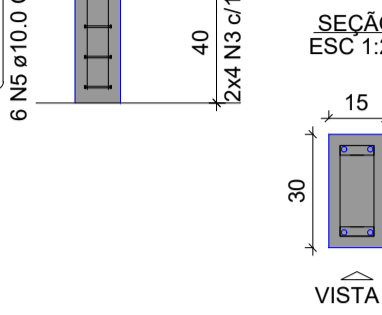
P2=P3=P6=P7

BALDRAME - L1



P1=P4=P5=P8

BALDRAME - L1



RELAÇÃO DO AÇO

AÇO	N	DIAM (mm)	QUANT	C.UNIT (cm)	C.TOTAL (cm)
CA60	1	5.0	40	215	8600
CA50	2	5.0	16	213	3408
	3	5.0	64	54	3456
	4	5.0	16	24	384
	5	10.0	40	92	3680

RESUMO DO AÇO

AÇO	DIAM (mm)	C.TOTAL (m)	PESO + 10% (kg)
CA50	10.0	36.8	25
CA60	5.0	158.5	26.9
PESO TOTAL (kg)			
CA50		25	
CA60		26.9	

Volume de concreto (C-25) = 1.50 m³  
Área de forma = 10.56 m²

RELAÇÃO DO AÇO

AÇO	N	DIAM (mm)	QUANT	C.UNIT (cm)	C.TOTAL (cm)
CA60	1	5.0	204	77	15708
CA50	2	8.0	4	306	1224
	3	8.0	4	316	1264
	4	8.0	2	224	448
	5	8.0	2	260	520
	6	8.0	4	803	3212
	7	8.0	4	431	1724
	8	8.0	2	111	222
	9	8.0	2	120	240
	10	8.0	4	452	1808
	11	8.0	4	423	1692
	12	10.0	4	489	1956

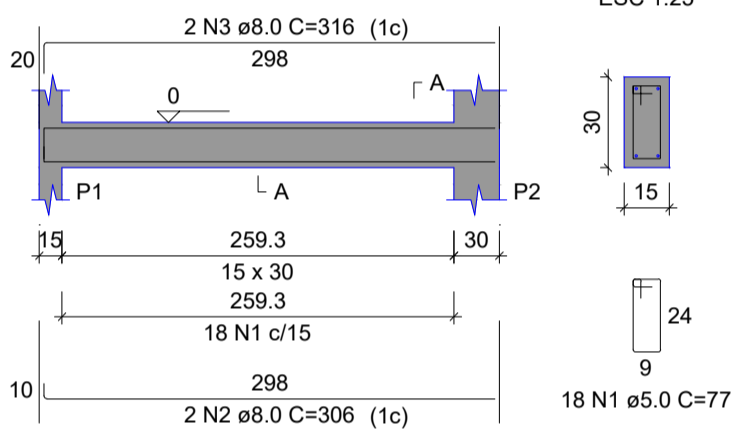
RESUMO DO AÇO

AÇO	DIAM (mm)	C.TOTAL (m)	PESO + 10% (kg)
CA50	8.0	123.5	53.6
	10.0	19.6	13.3
CA60	5.0	157.1	26.6
PESO TOTAL (kg)			
CA50		66.9	
CA60		26.6	

Volume de concreto (C-25) = 1.34 m³  
Área de forma = 22.41 m²

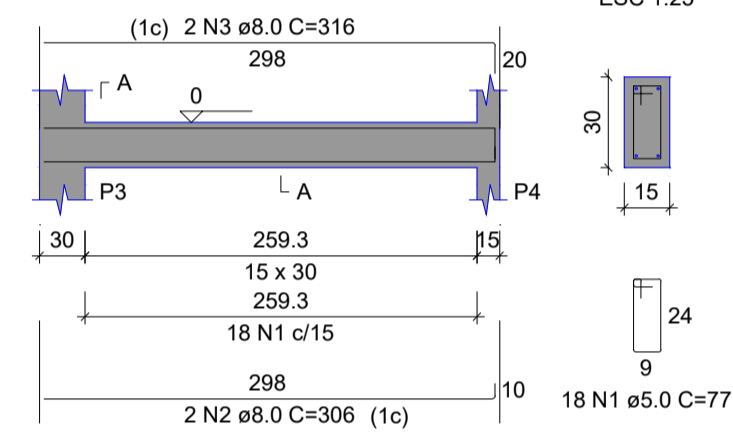
V1

ESC 1:50



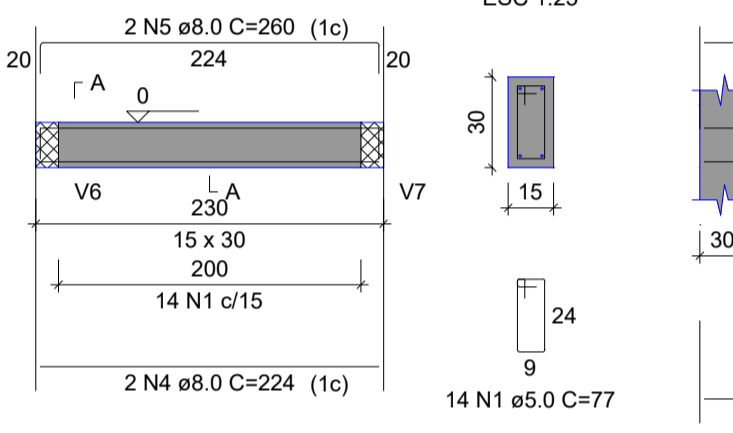
V2

ESC 1:50



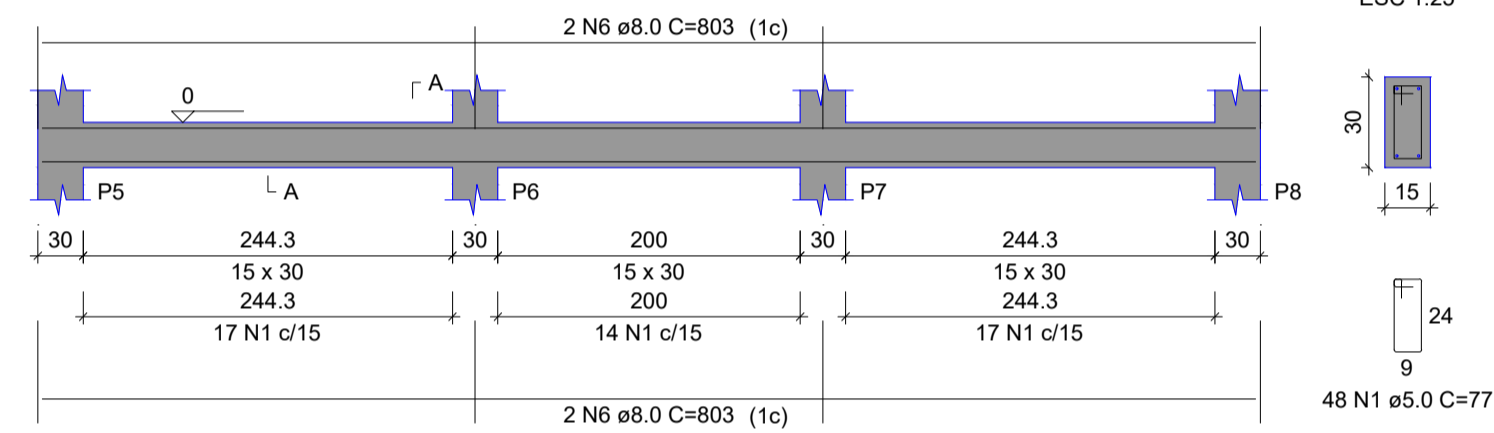
V3

ESC 1:50



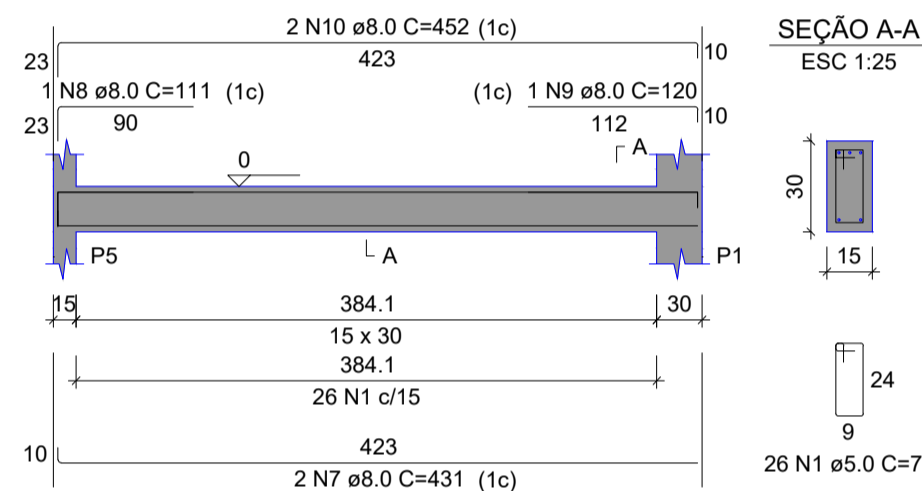
V4

ESC 1:50



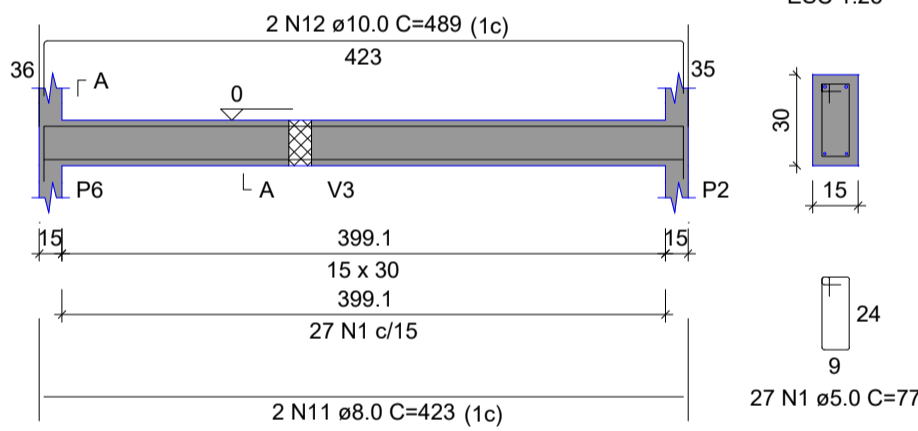
V5

ESC 1:50



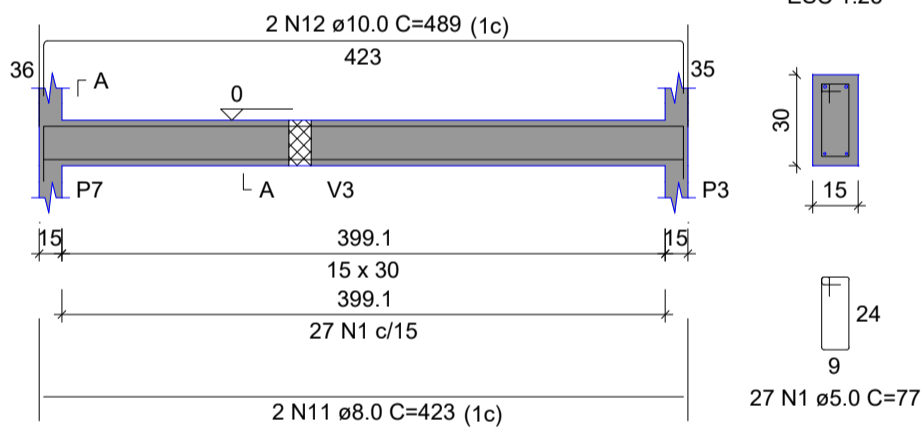
V6

ESC 1:50



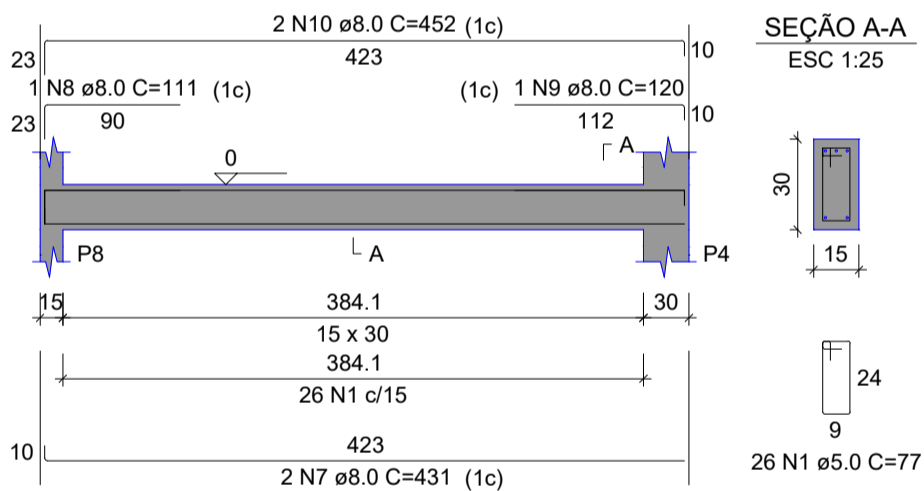
V7

ESC 1:50



V8

ESC 1:50



# PROJETO ESTRUTURAL

ENDEREÇO: RUA BENEDITO GONÇALVES, SETOR AEROPORTO, Itapaci-GO

PROPRIETÁRIO: PREFEITURA MUNICIPAL DE ITAPACI - CNPJ: 01.134.808/0001-24

AUTOR DO PROJ.: ENG. CIVIL FREDERICO GAIOSO DE LIMA CREA: 1017502900/D-GO

## ORLA DA REPRESA - BANHEIROS



CONTEÚDO:

# BALDRAME

ESCALA

INDICADA

DATA

MAI/2026

FOLHA

A-1

PRANCHA:

3/6

REVISÃO

00