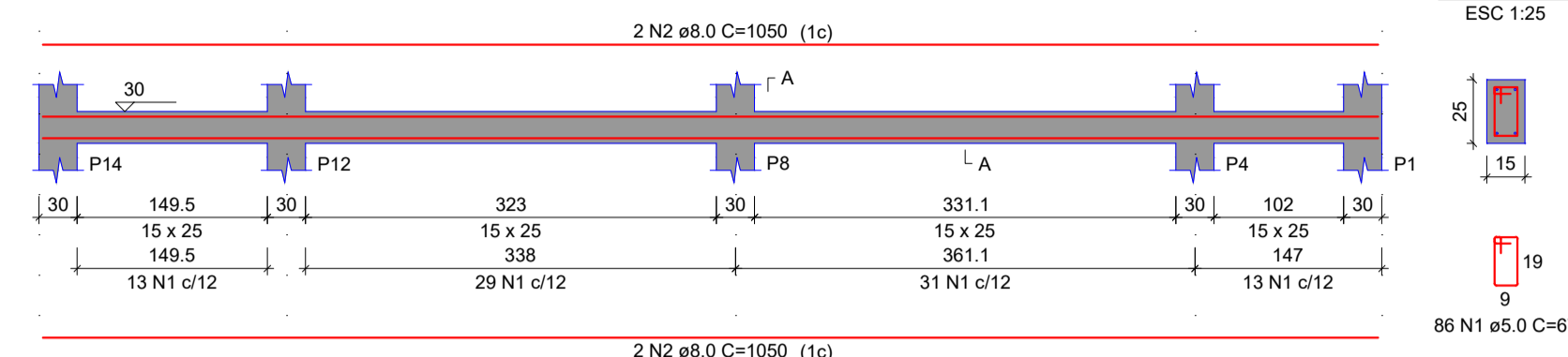
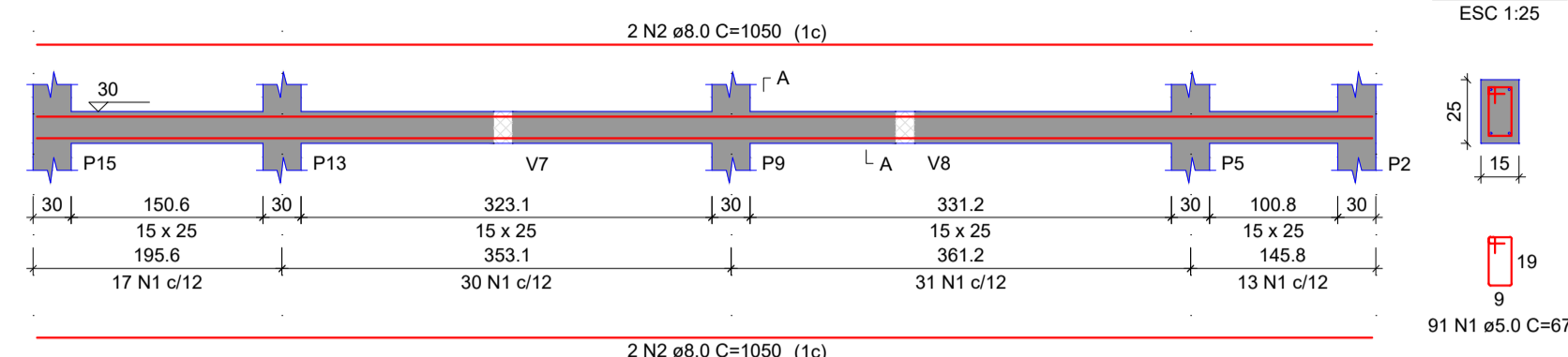


# DETALHES VIGAS BALDRAME

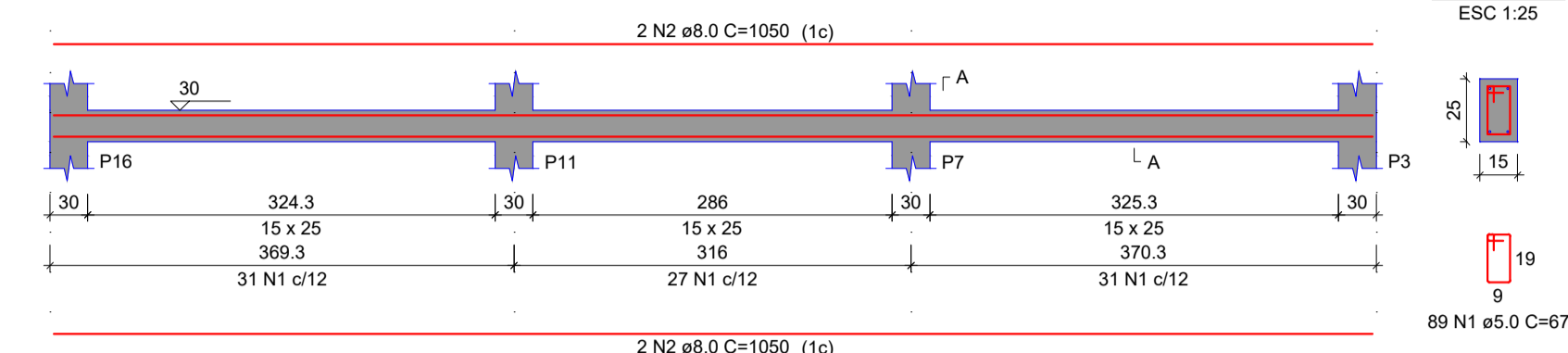
**VB7**  
ESC 1:50



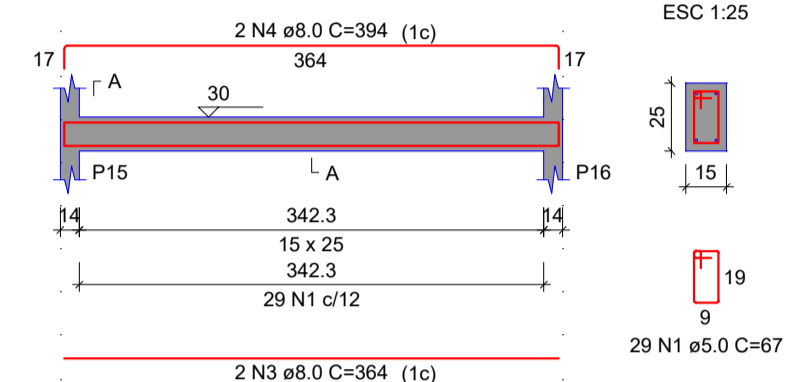
**VB8**  
ESC 1:50



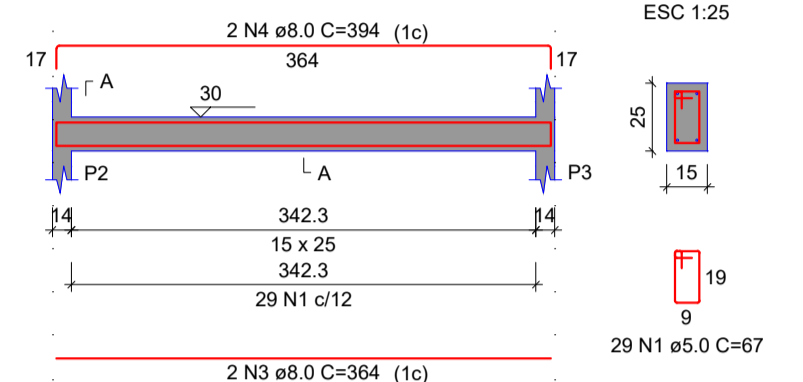
**VB10**  
ESC 1:50



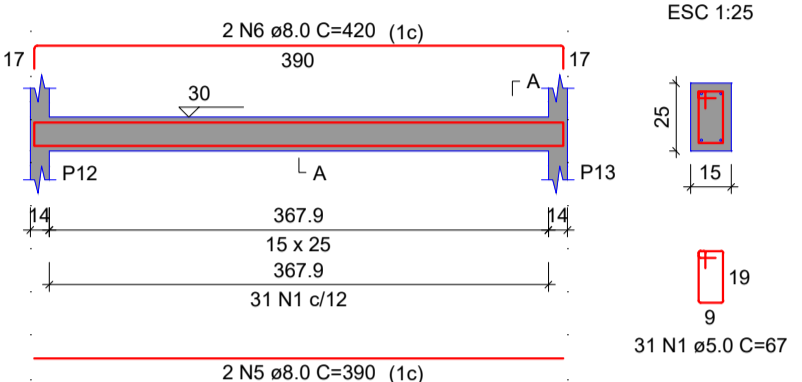
**VB2**  
ESC 1:50



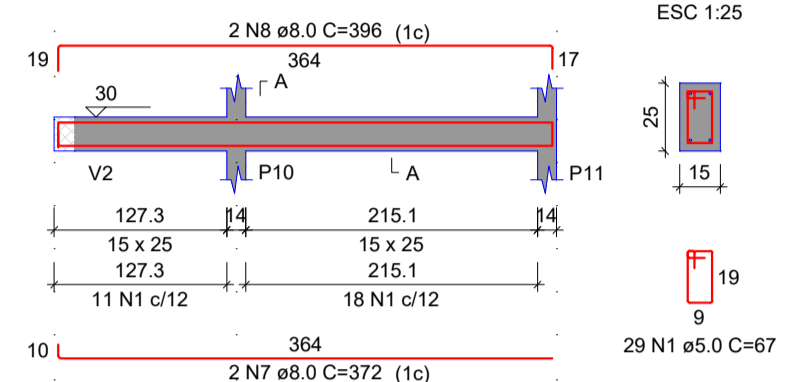
**VB5**  
ESC 1:50



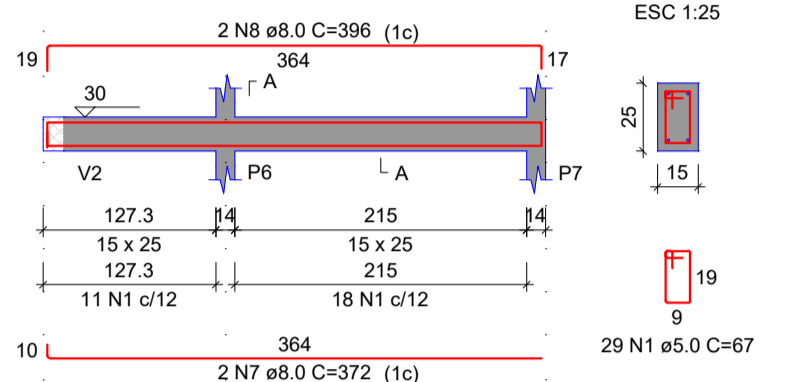
**VB6**  
ESC 1:50



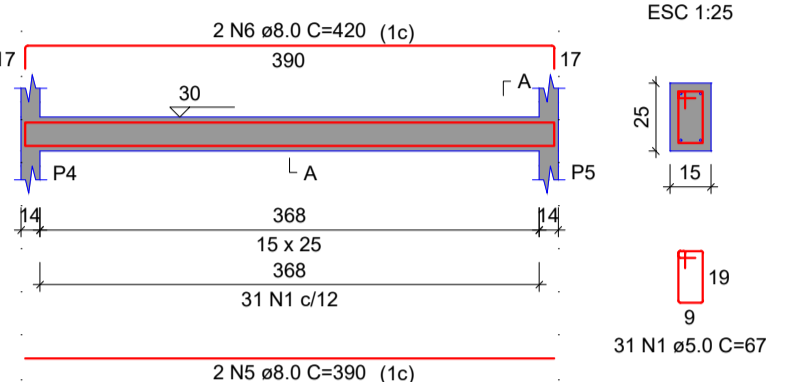
**VB3**  
ESC 1:50



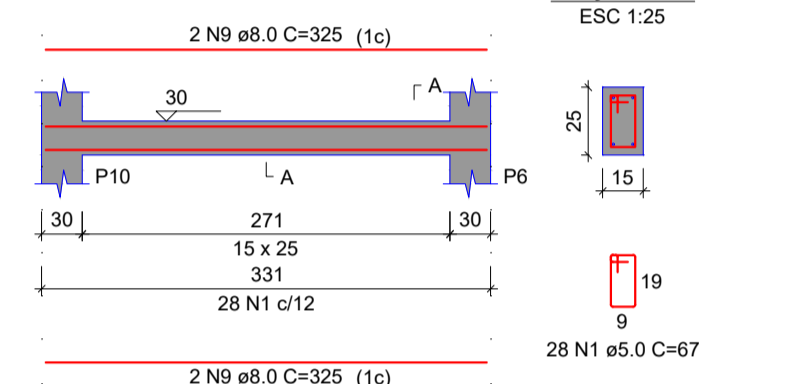
**VB4**  
ESC 1:50



**VB1**  
ESC 1:50

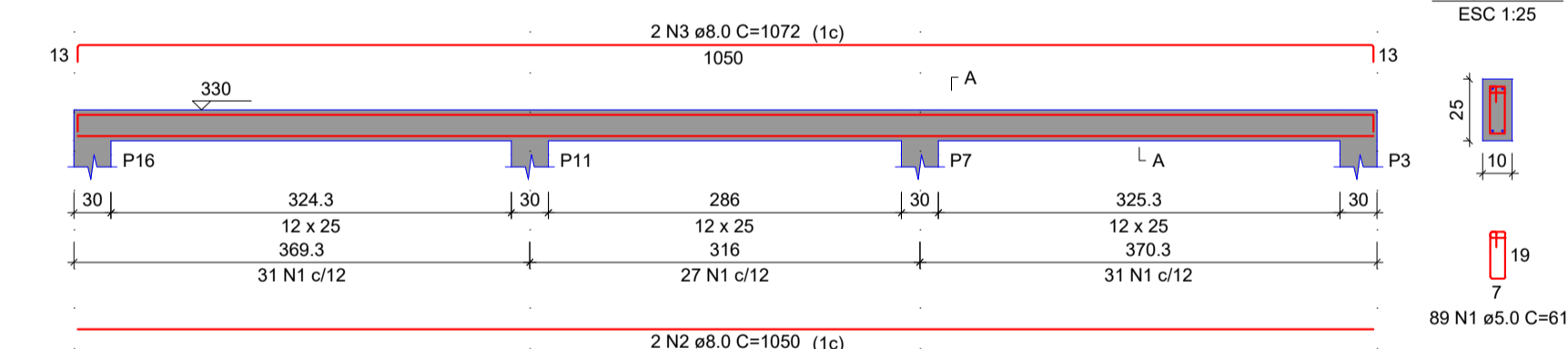


**VB9**  
ESC 1:50

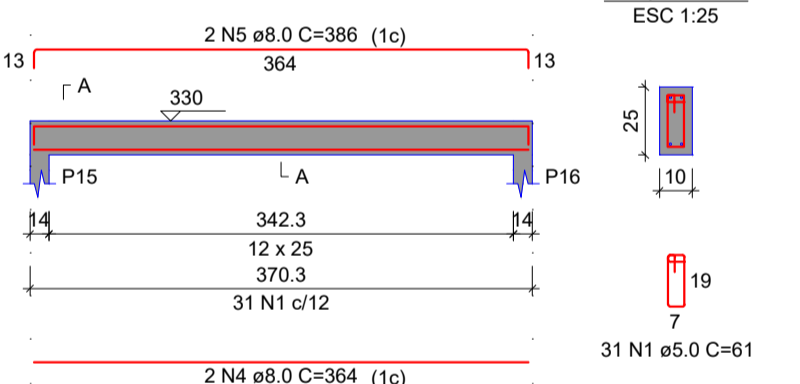


# DETALHES VIGAS COBERTURA

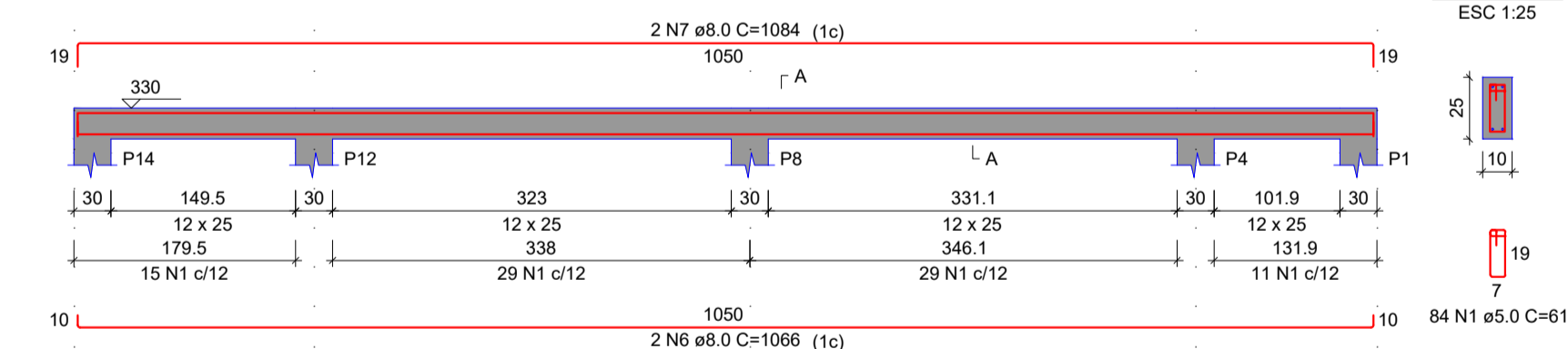
**VA10**  
ESC 1:50



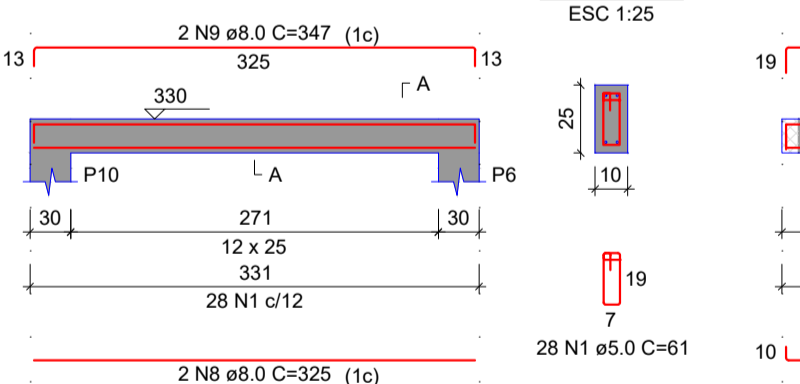
**VA2**  
ESC 1:50



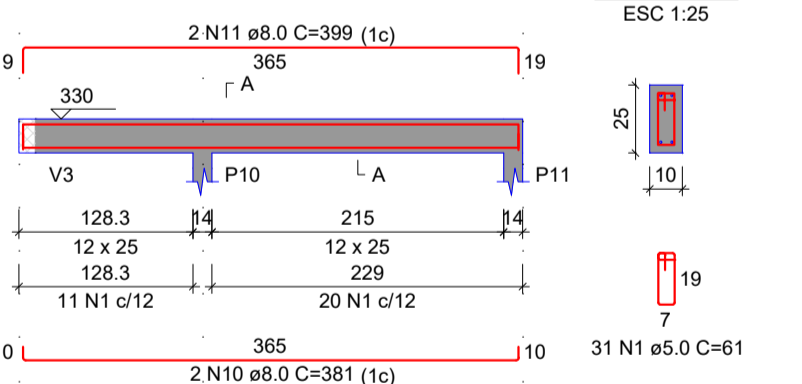
**VA7**  
ESC 1:50



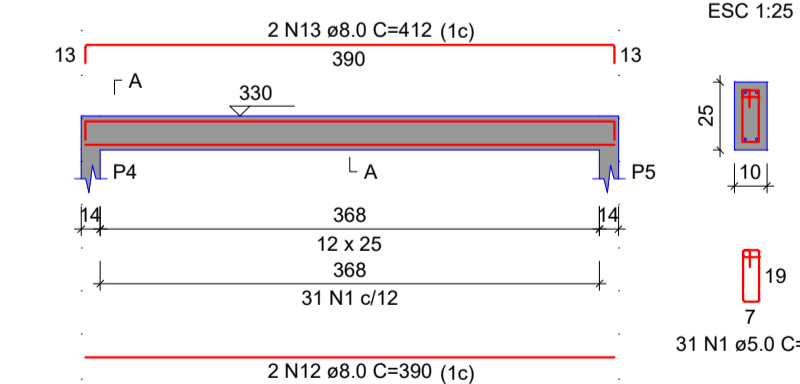
**VA9**  
ESC 1:50



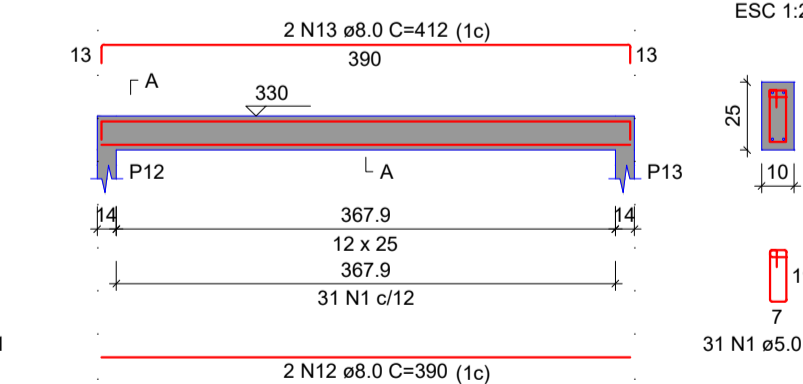
**VA4**  
ESC 1:50



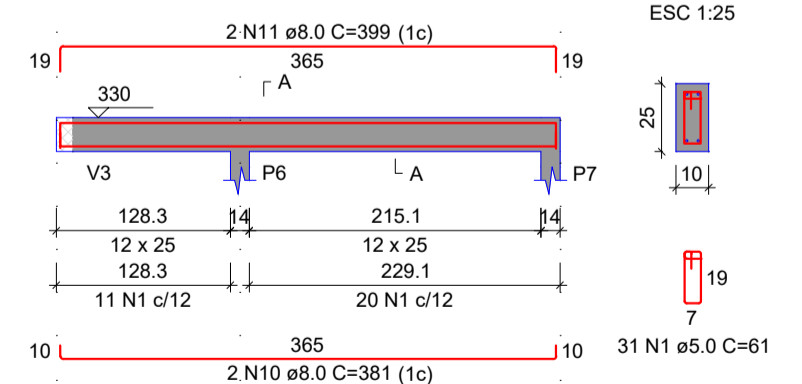
**VA1**  
ESC 1:50



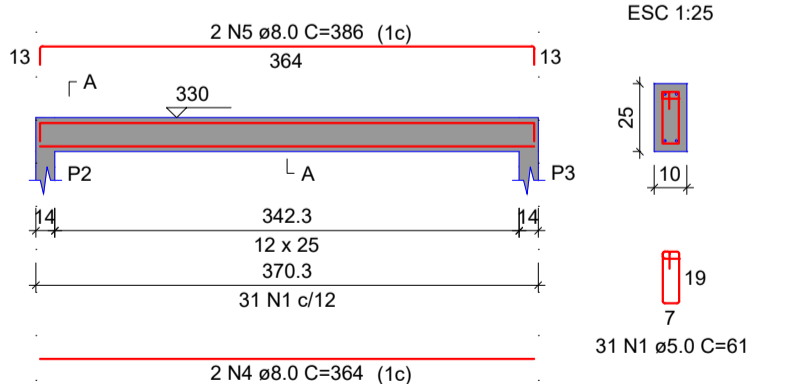
**VA6**  
ESC 1:50



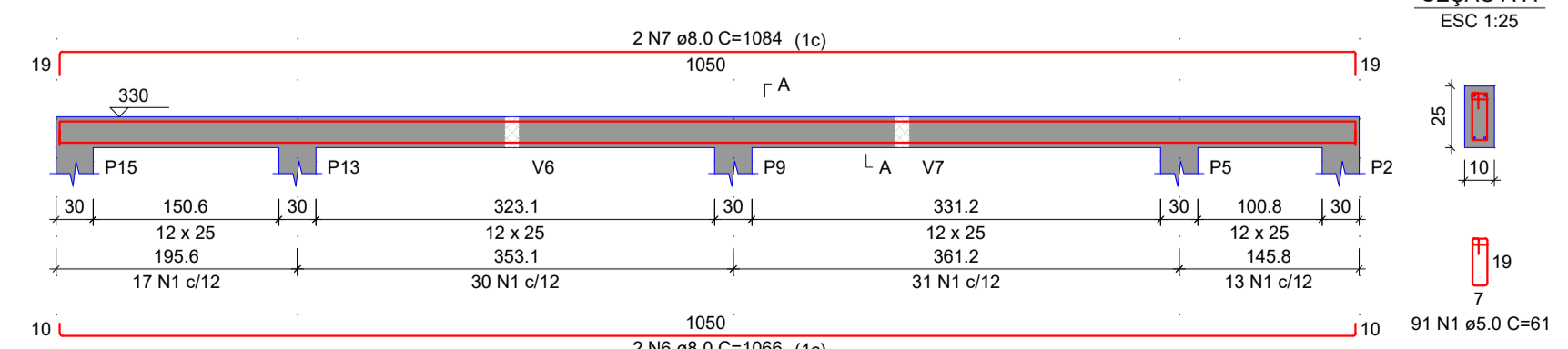
**VA3**  
ESC 1:50



**VA5**  
ESC 1:50



**VA8**  
ESC 1:50





**PREFEITURA DE ITAPURANGA**  
GOVERNO POPULAR E TRANSPARENTE

SERVIÇO: PROJETO CASAS MCMV FNHIS - ITAPURANGA - GO		
ENDEREÇO: RESIDENCIAL JARDIM PACÍFICO - ITAPURANGA-GO - CEP 76680-000		
PREFEITO:  GERALDO PAULO FERNANDES		
AUTOR DO PROJETO e R.T.:  TARSO BARREIRA SILVA CREA 6921/D-GO		
ÁREAS: Área do terreno: 172,54 m <sup>2</sup> Área da construção: 59,28 m <sup>2</sup>	CONTEÚDO: DETALHAMENTO DE VIGAS	PRANCHA: <h1 style="font-size: 2em;">1/1</h1>
DATA: AGOSTO/2025	ESCALA: 1/100	ARQUIVO: PRANCHA E02