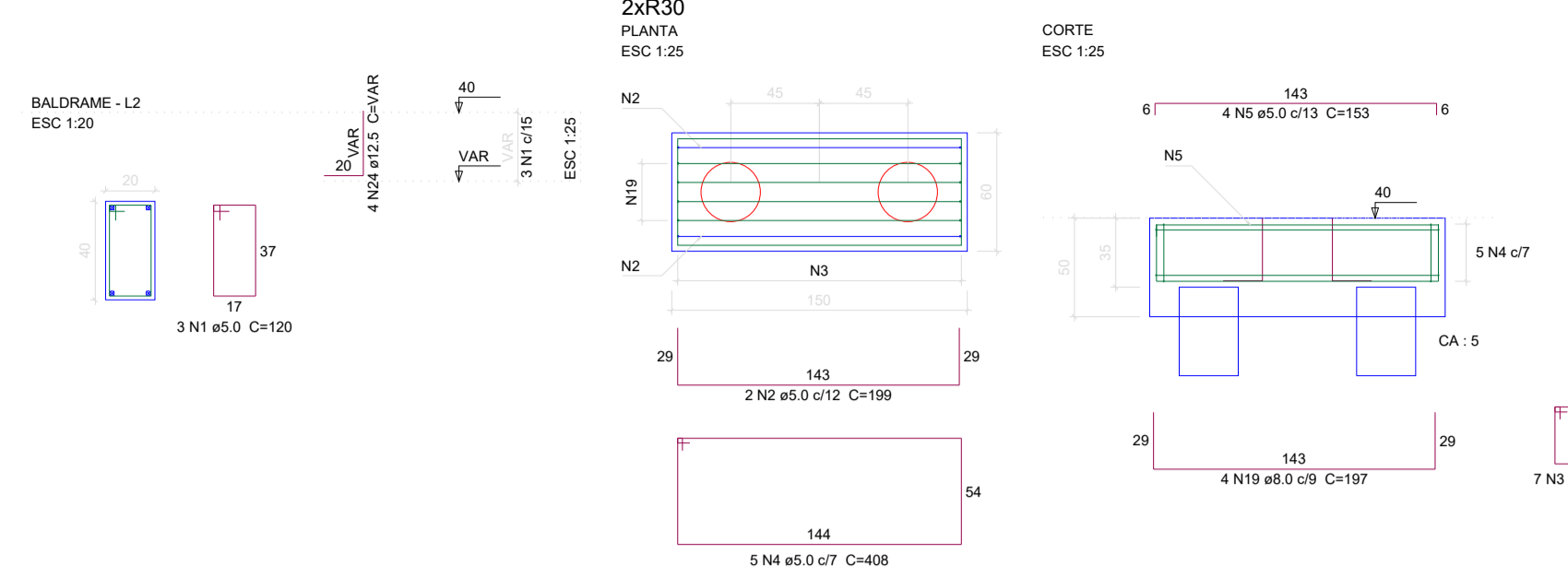
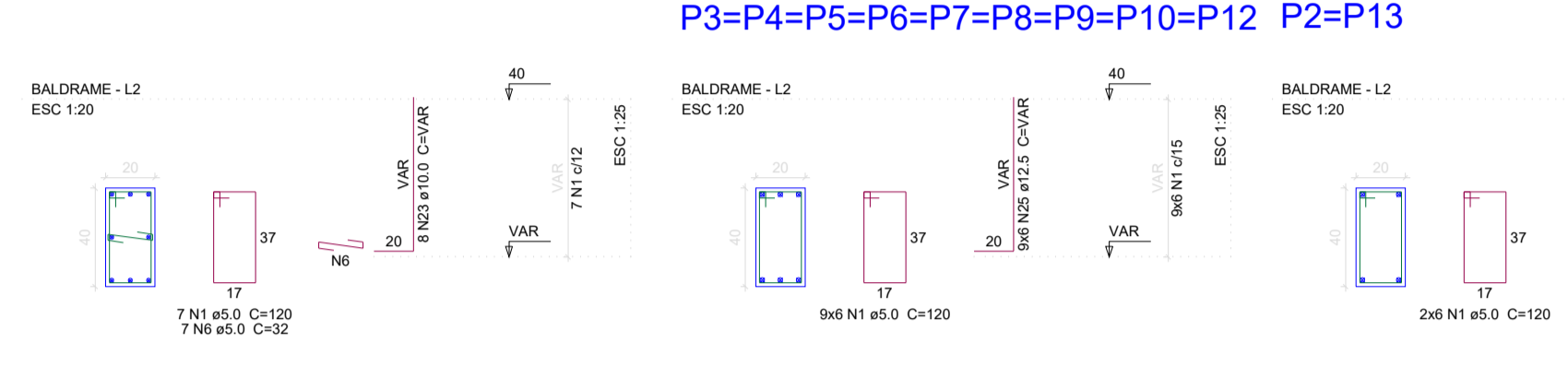


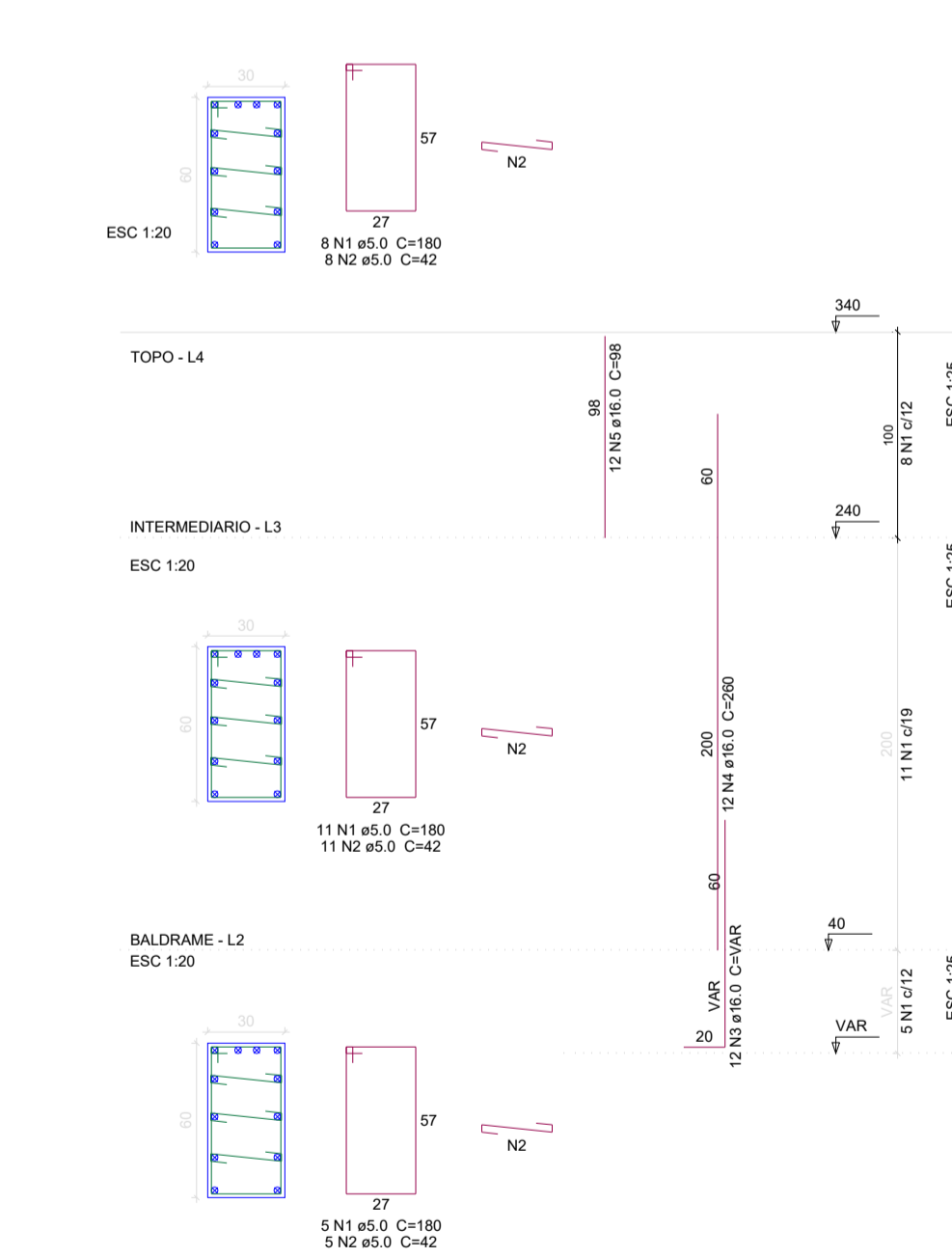
P1



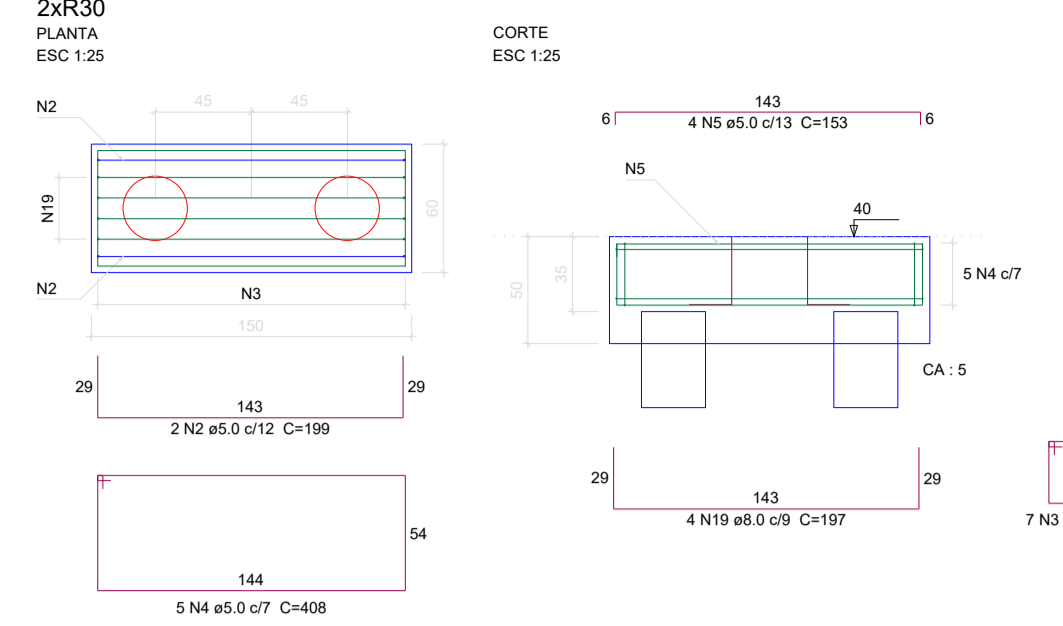
P11



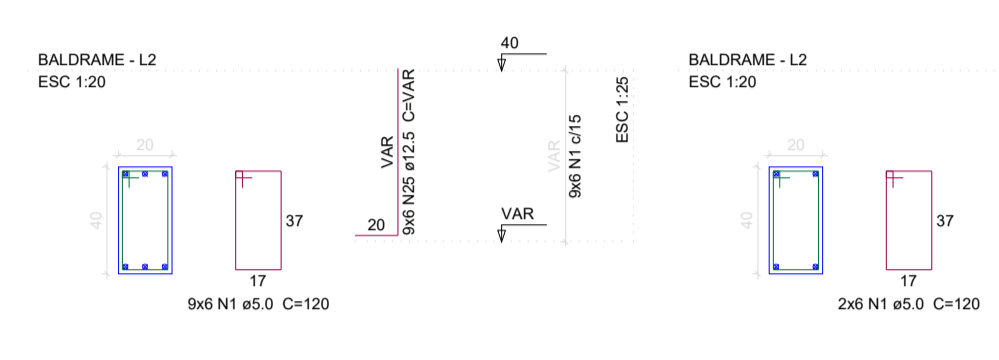
P15=P16=P17=P18=P19=P20=P21=P22=P23=P24
=P25=P26=P27



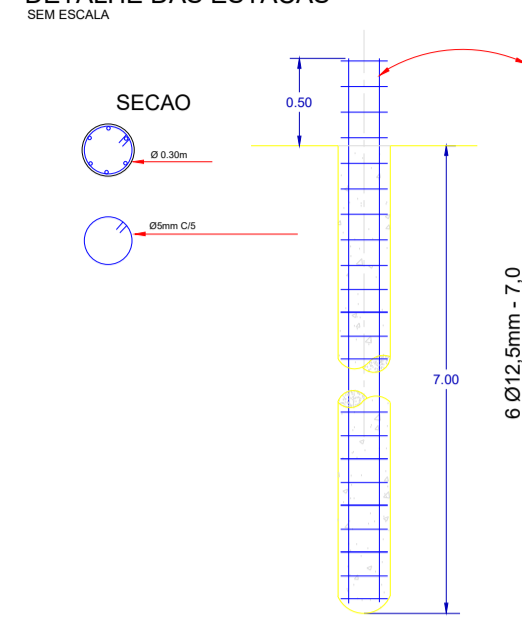
B1=B2=B3=B4=B5=B6=B7=B8=B9=B10=B11=B12=B13=B14



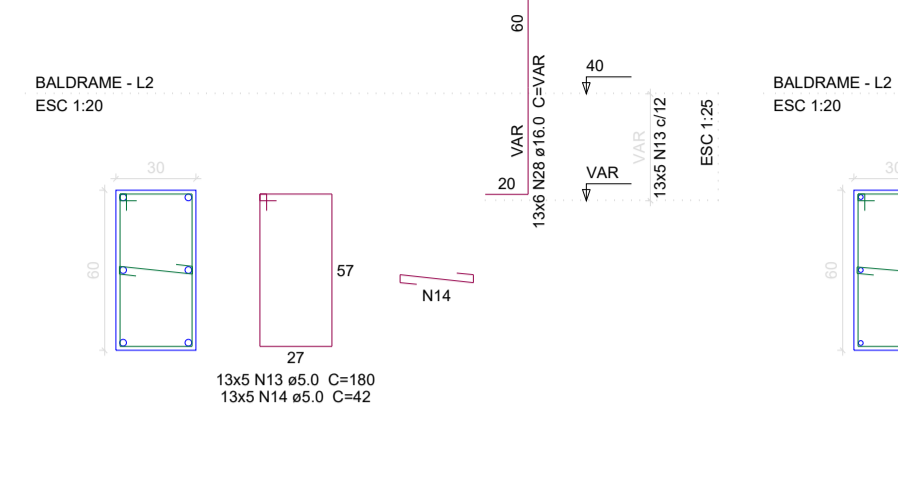
P3=P4=P5=P6=P7=P8=P9=P10=P12 P2=P13



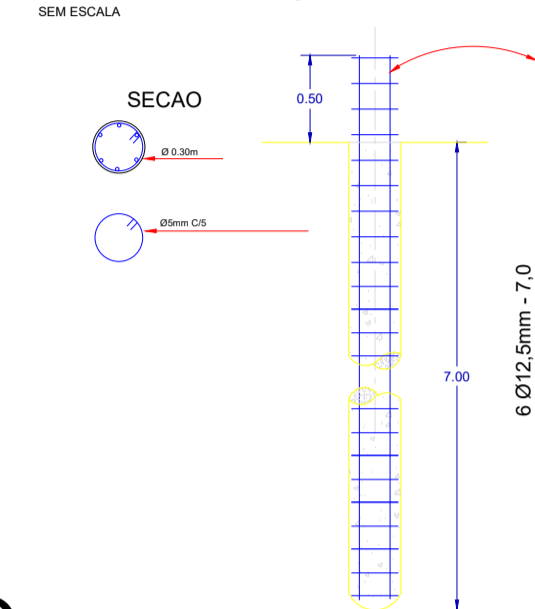
DETALHE DAS ESTACAS



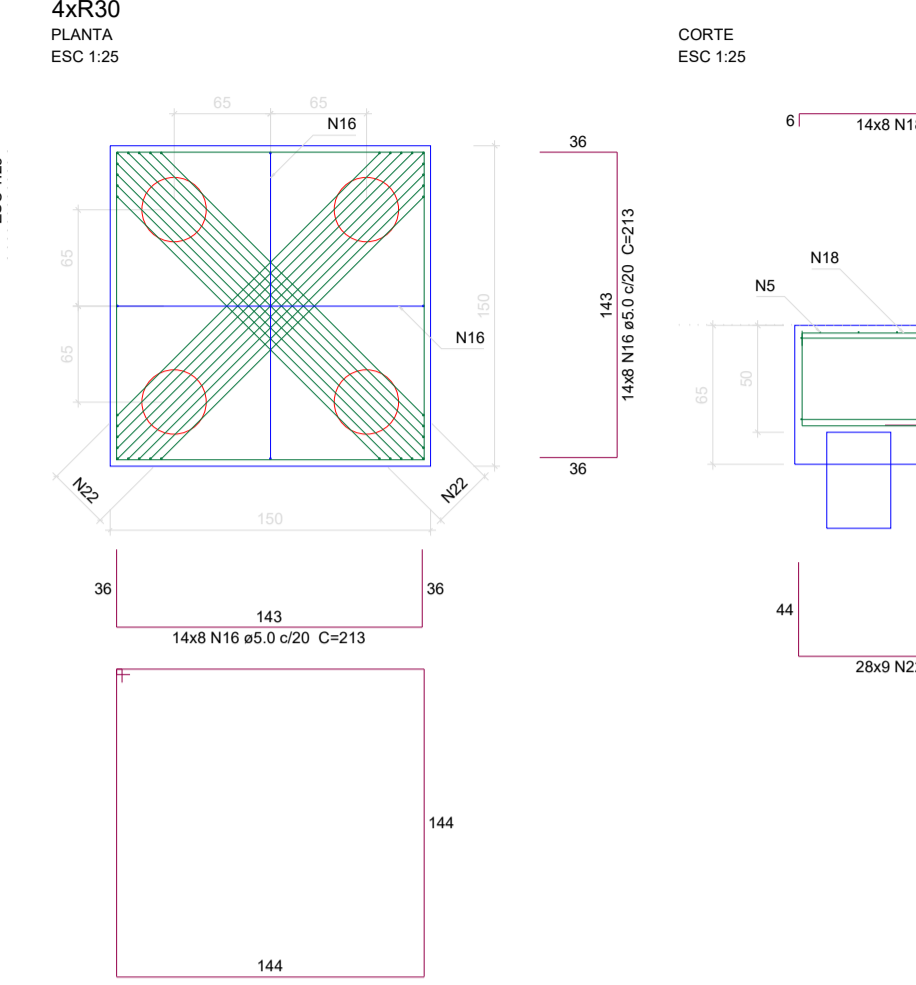
P15=P16=P17=P18=P19=P20=P21=P22=P23=P24
=P25=P26=P27 =P28



DETALHE DAS ESTACAS



B15=B16=B17=B18=B19=B20=B21=B22=B23=B24
=B25=B26=B27=B28



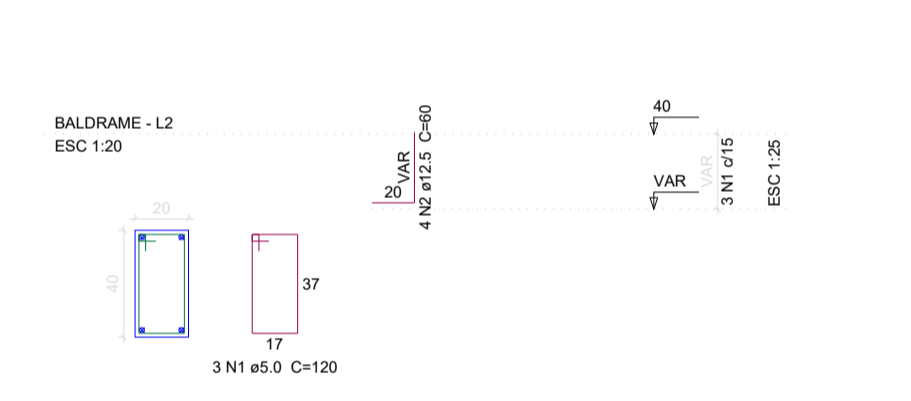
BLOCOS DO MURO DE ARRIMO

BLOCOS DE FUNDAÇÃO							
AÇO	N	DIAM (MM)	PESO/M (KG/M)	QUANT (BARRAS)	UNIT (CM)	C. TOTAL (CM)	PESO +10 %
CA60	2	5	0,154	28	199	5572	9,44
CA60	3	5	0,154	98	176	17248	29,22
CA60	4	5	0,154	70	408	28560	48,38
CA60	5	5	0,154	168	153	25704	43,54
CA60	16	5	0,154	112	213	23856	40,41
CA60	17	5	0,154	70	588	41160	69,73
CA60	18	5	0,154	112	154	17248	29,22
CA60	19	8	0,395	56	197	11032	47,93
CA60	22	8	0,395	126	250	31500	136,87

CONCRETO	26,775
AREA DE FORMA:	122,3

CA60	269,94	KG
CA50	184,80	KG

P1=P3=P4=P5=P6=P7=P8=P9=P10=P12=P13=P14



P1=P3=P4=P5=P6=P7=P8=P9=P10=P12=P13=P14							
AÇO	N	DIAM (MM)	PESO/M (KG/M)	QUANT (BARRAS)	UNIT (CM)	C. TOTAL (CM)	PESO +10 %
CA60	1	5	0,154	84	120	10080	17,06
CA50	2	12,5	0,963	56	60	3360	35,59

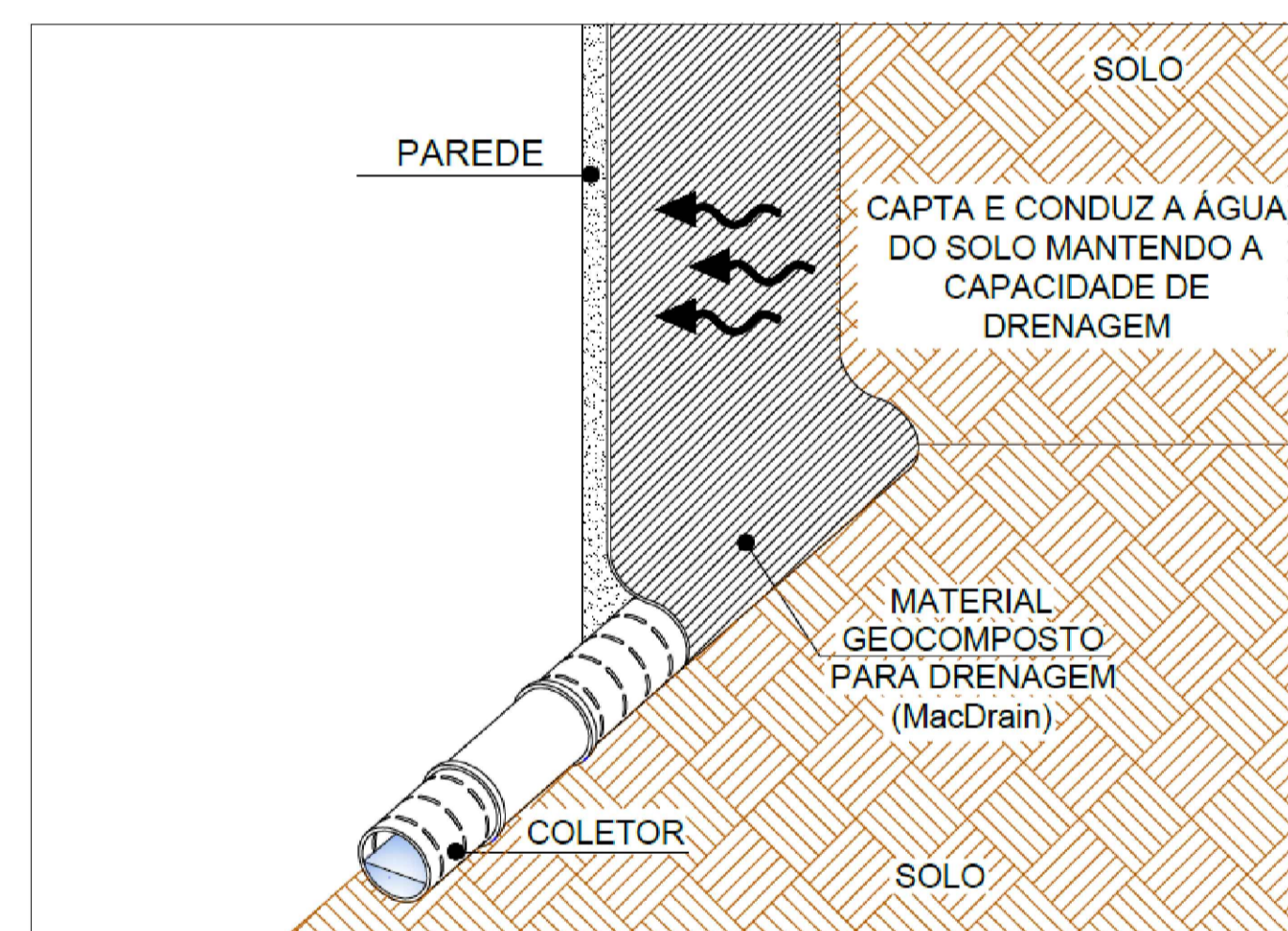
CONCRETO	1,2	
AREA DE FORMA:	12,44	
CA60	17,06	KG
CA50	35,59	KG

PILARES DO MURO DE ARRIMO

P15=P16=P17=P18=P19=P20=P21=P22=P23=P24=P25=P26=P27							
AÇO	N	DIAM (MM)	PESO/M (KG/M)	QUANT (BARRAS)	UNIT (CM)	C. TOTAL (CM)	PESO + 10 %
CA60	1	5	0,154	336	180	60.480	102,45
CA50	2	5	0,154	336	42	14.112	23,91
CA50	3	16	1,578	168	150	25.200	437,42
CA50	4	16	1,578	168	260	43.680	758,20
CA50	5	16	1,578	168	98	16.464	285,78

CONCRETO	13,86	
AREA DE FORMA:	138,6	
CA60	126,36	KG
CA50	1481,40	KG

DETALHE DE DRENAGEM PARA MURO DE ARRIMO



ITAPURANGA - GOIÁS

APROVAÇÃO:

DADOS DO PROJETO:
CONSTRUÇÃO DE TRANSBORDO ROOL ON/OFF DO ATERRO SANITÁRIO EM ITAPURANGA-GO
OBRA COM RECURSOS DO TESOUREIRO

ART N° 1020260111496

PROJETO ESTRUTURAL

ENGENHEIRO OBRAS:
GO 230, ITAPURANGA-GO - 76680-000
COORDENADAS: 15°32'30.0" S 49°59'29.1" W

PROPRIETÁRIO:
GERALDO PAULO FERNANDES
PREFEITO MUNICIPAL
ITAPURANGA - GOIÁS

AUTORES:
Autor: Tarcis Barreira Silva
Engº civil CREA 6.920/D-GO

Objeto: - FUNDAÇÃO MURO DE ARRIMO

Escala: Indicada

FRANCA: 04/08