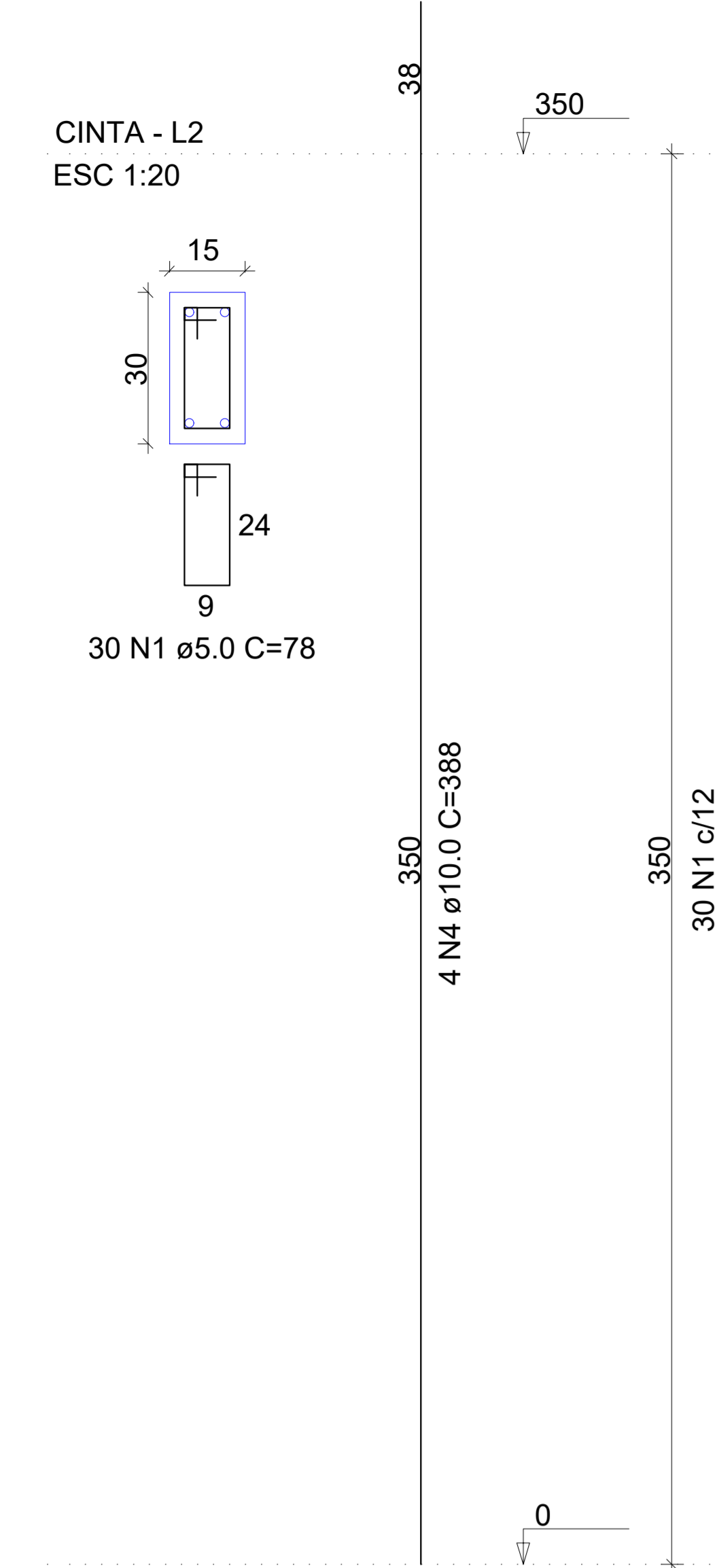
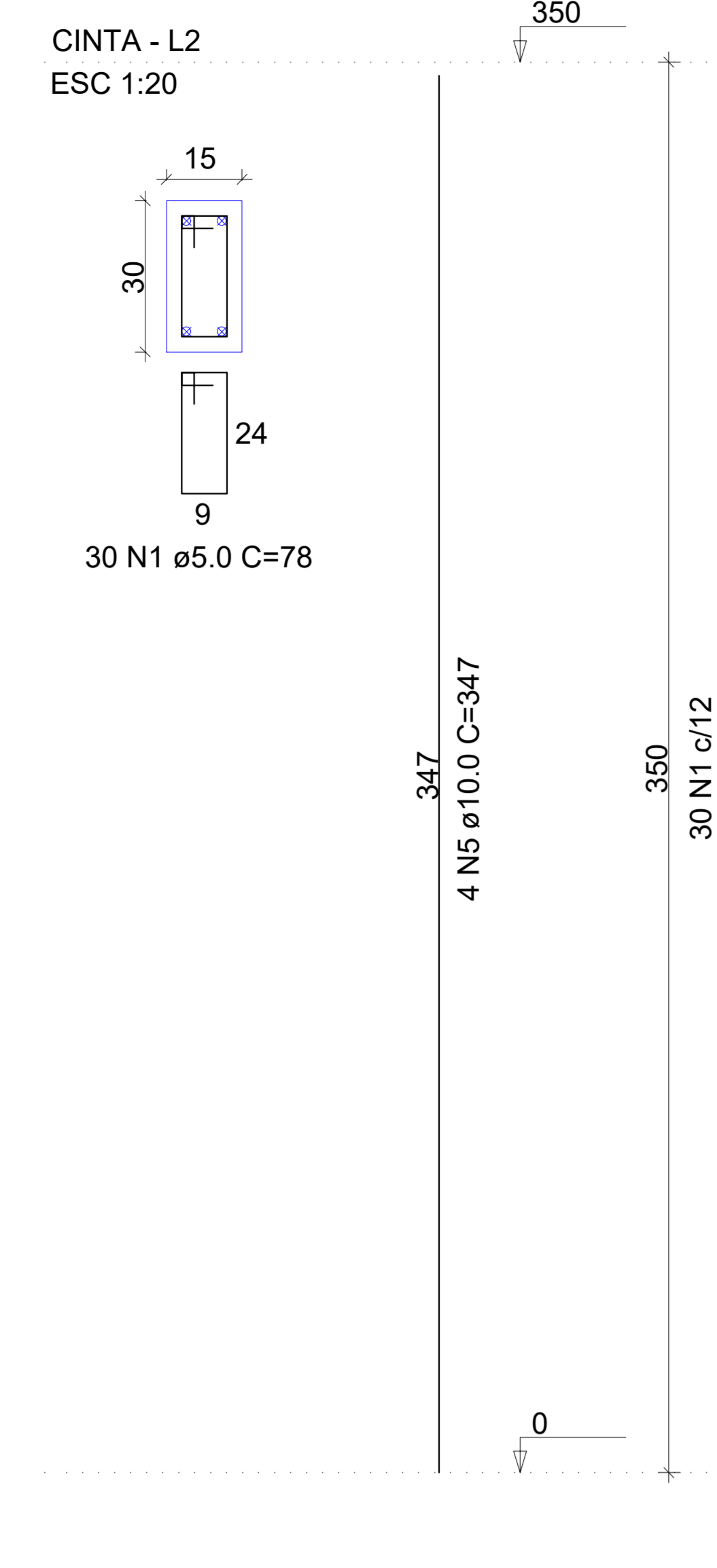


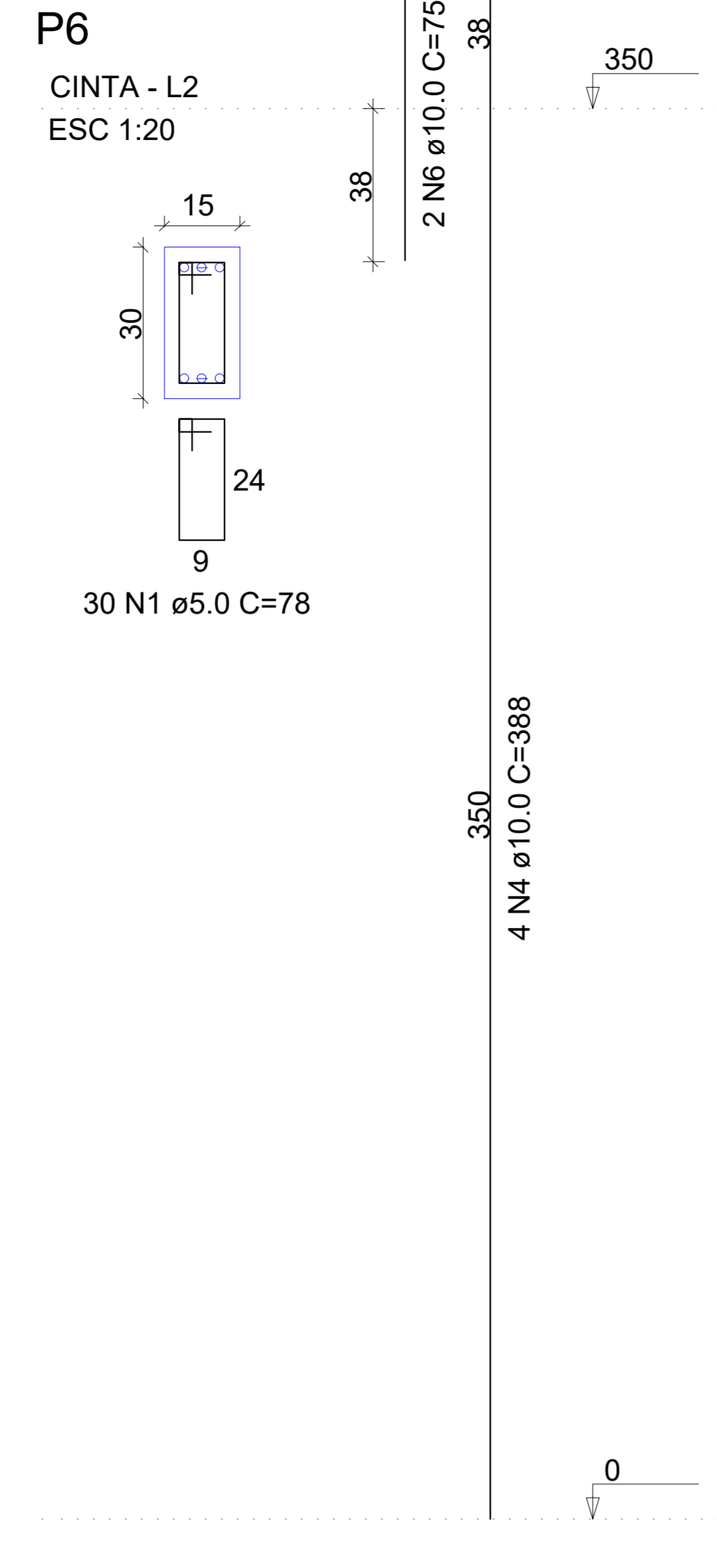
P1=P5=P15



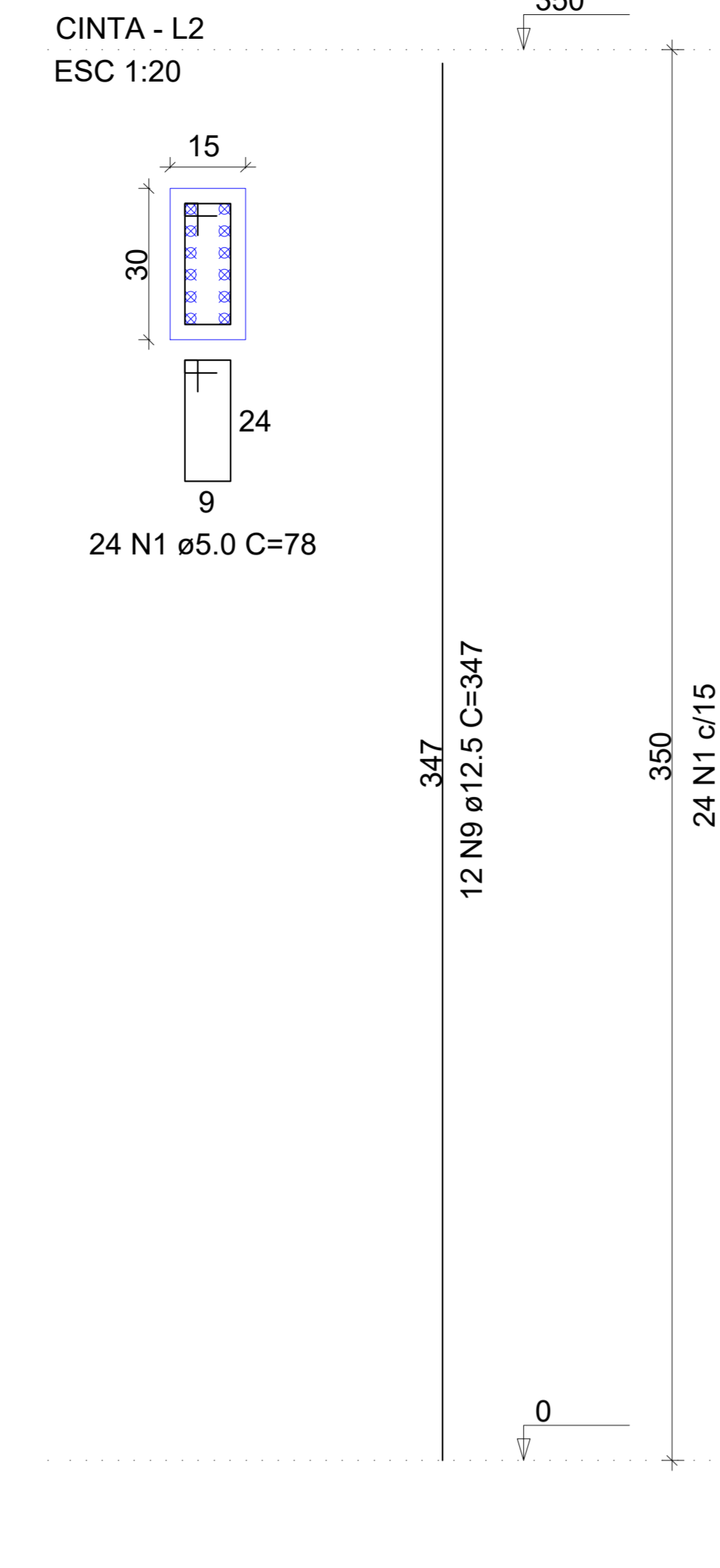
P2=P3=P4=P7=P9



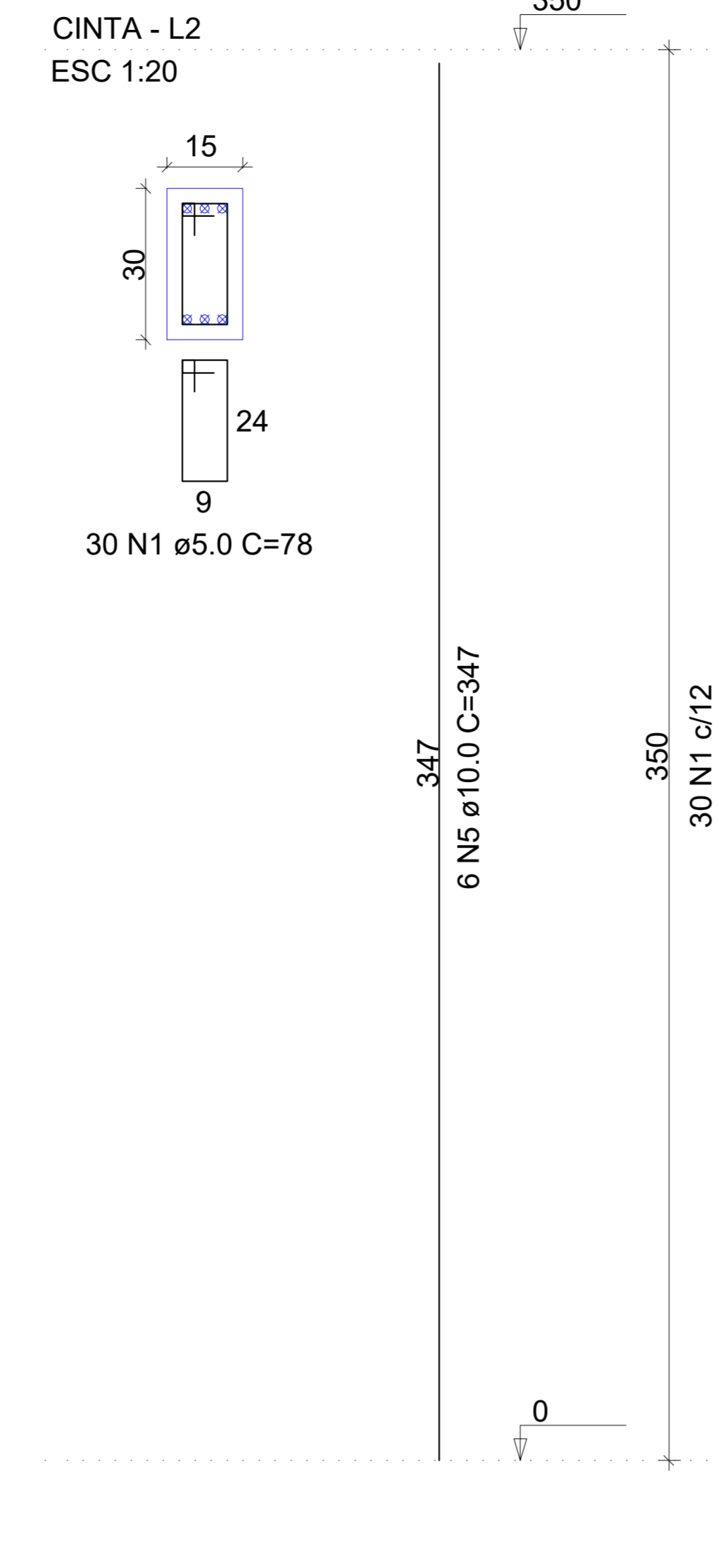
P6



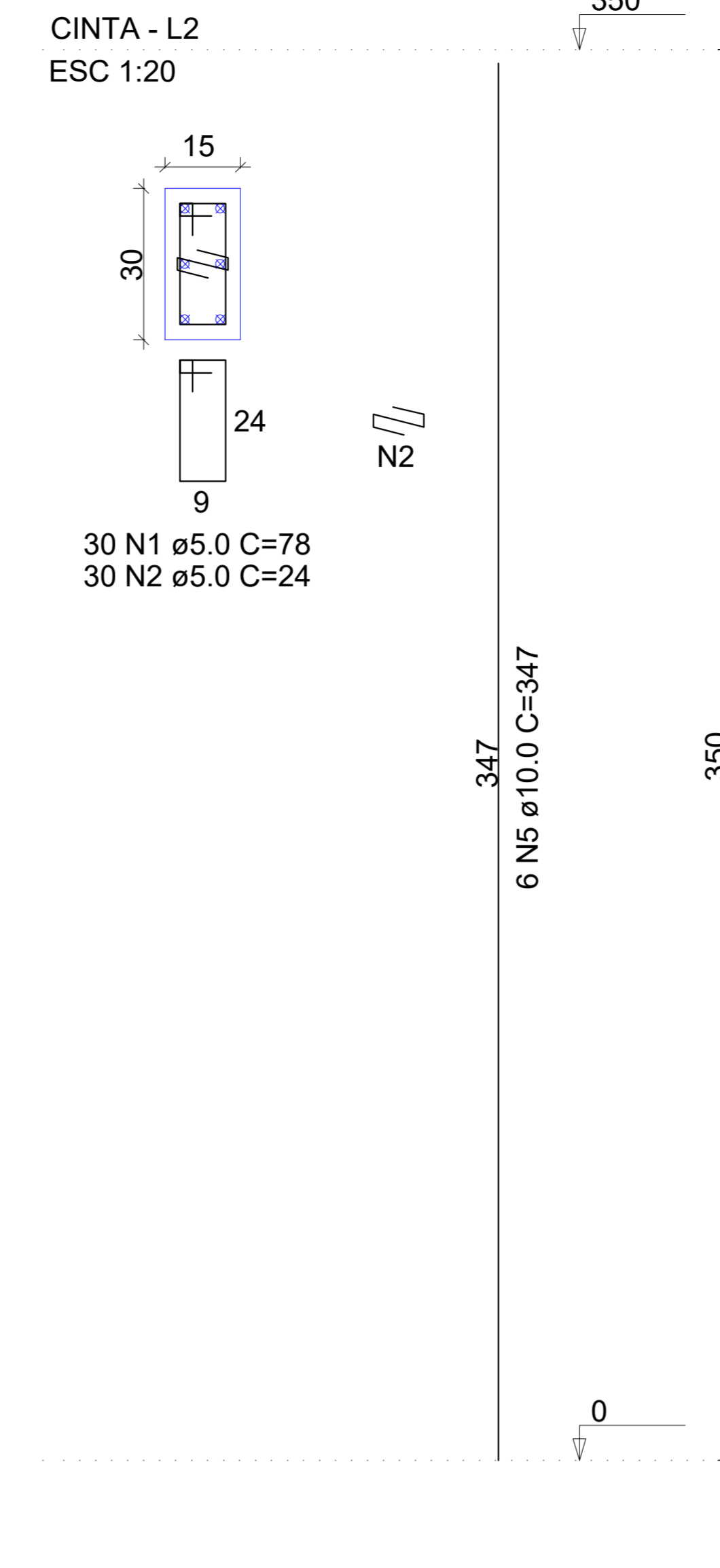
P8



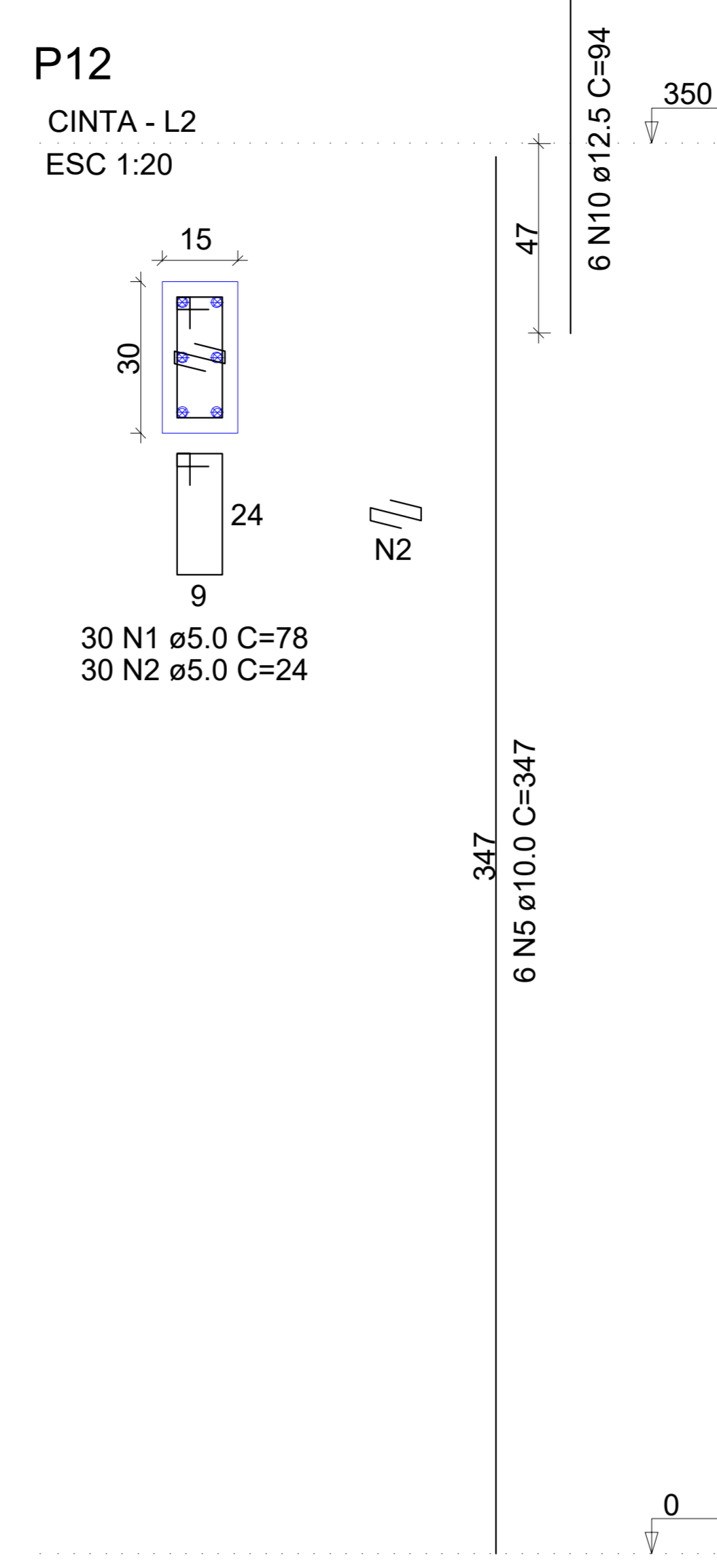
P10



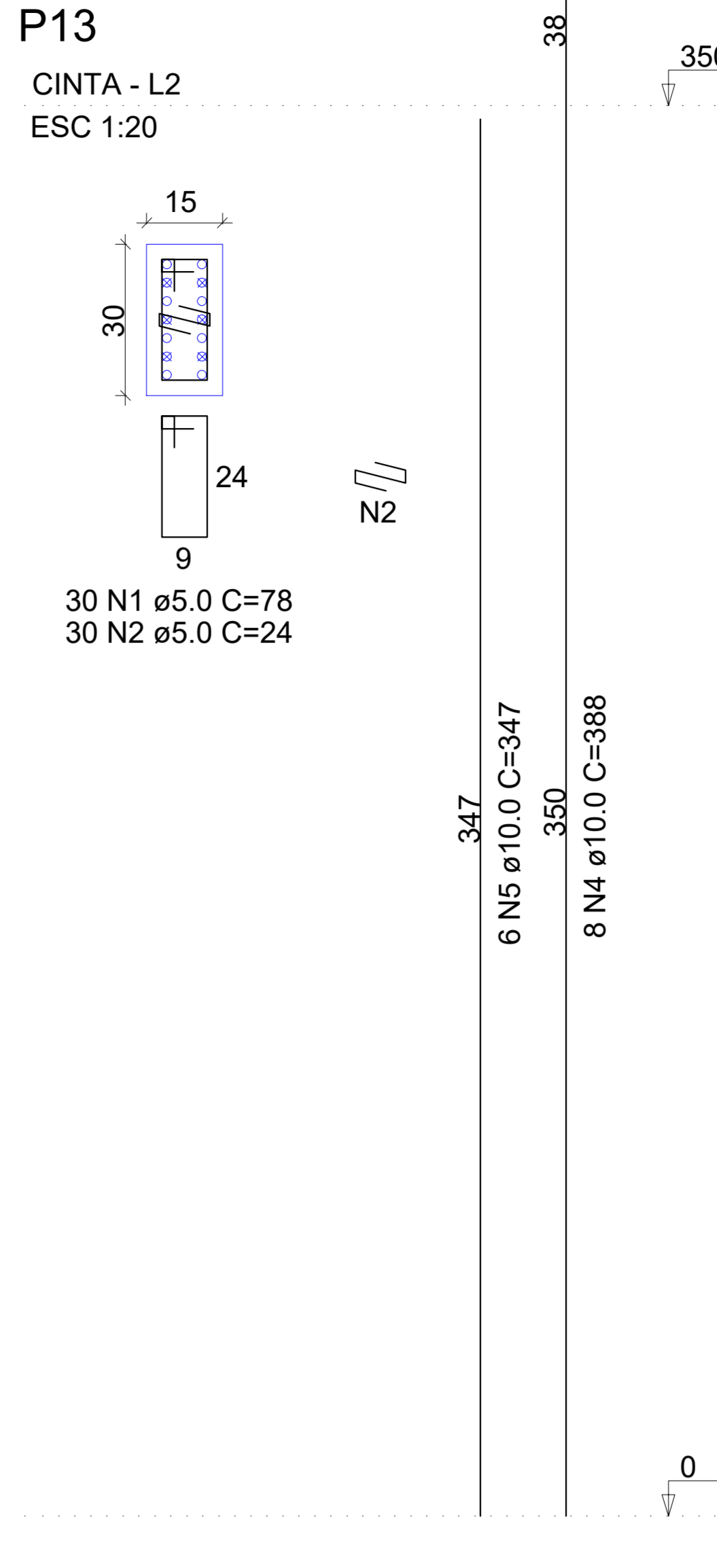
P11



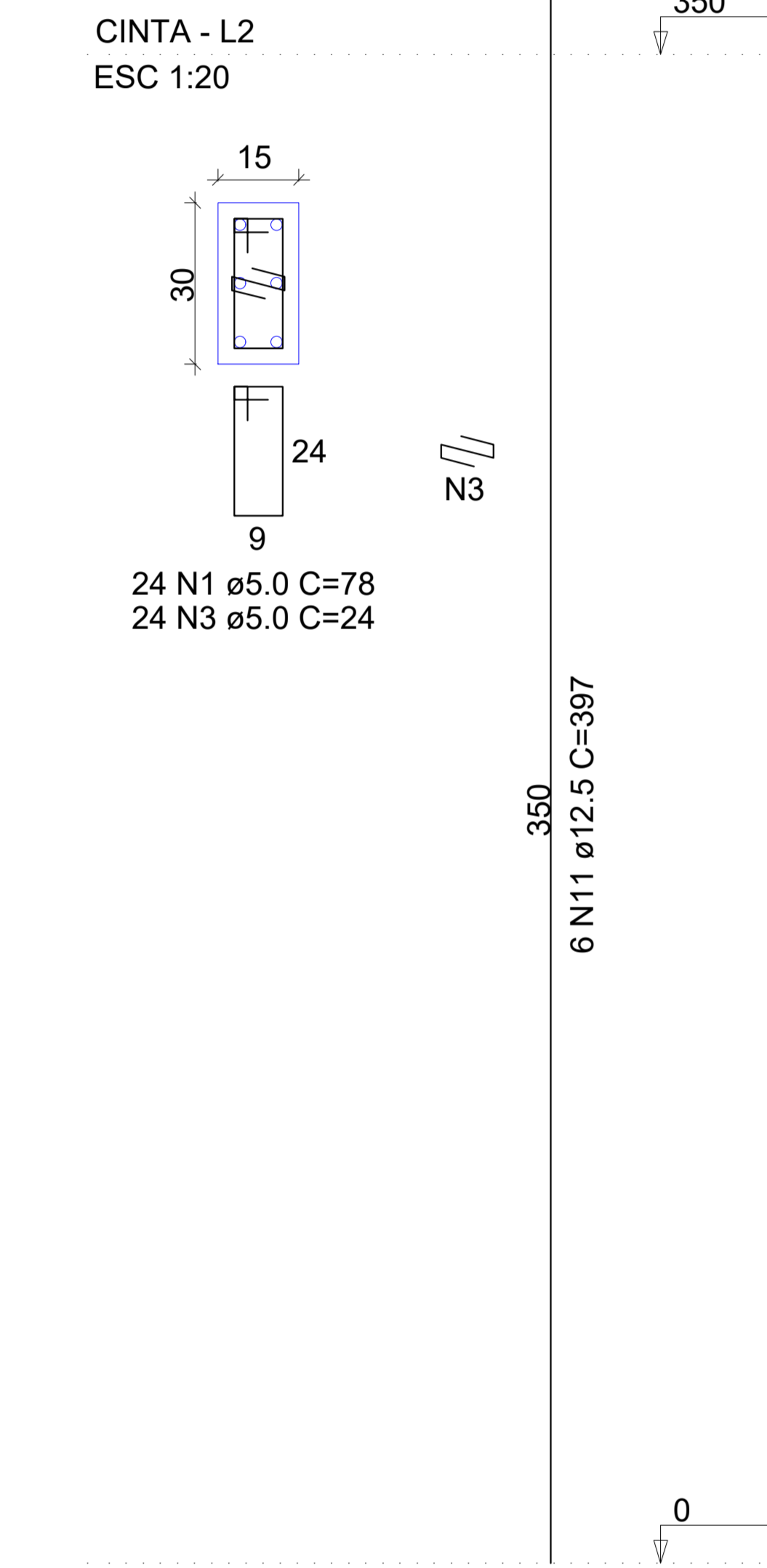
P12



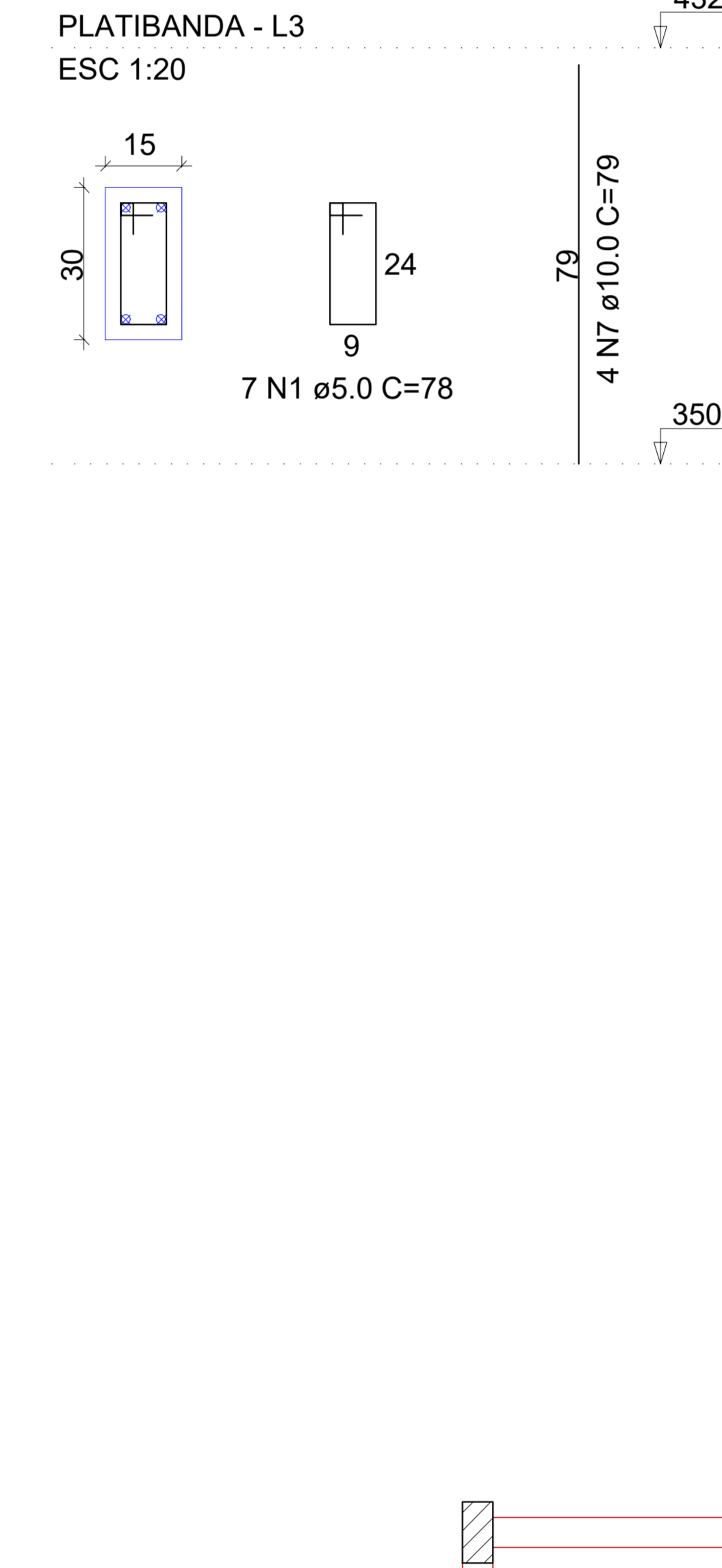
P13



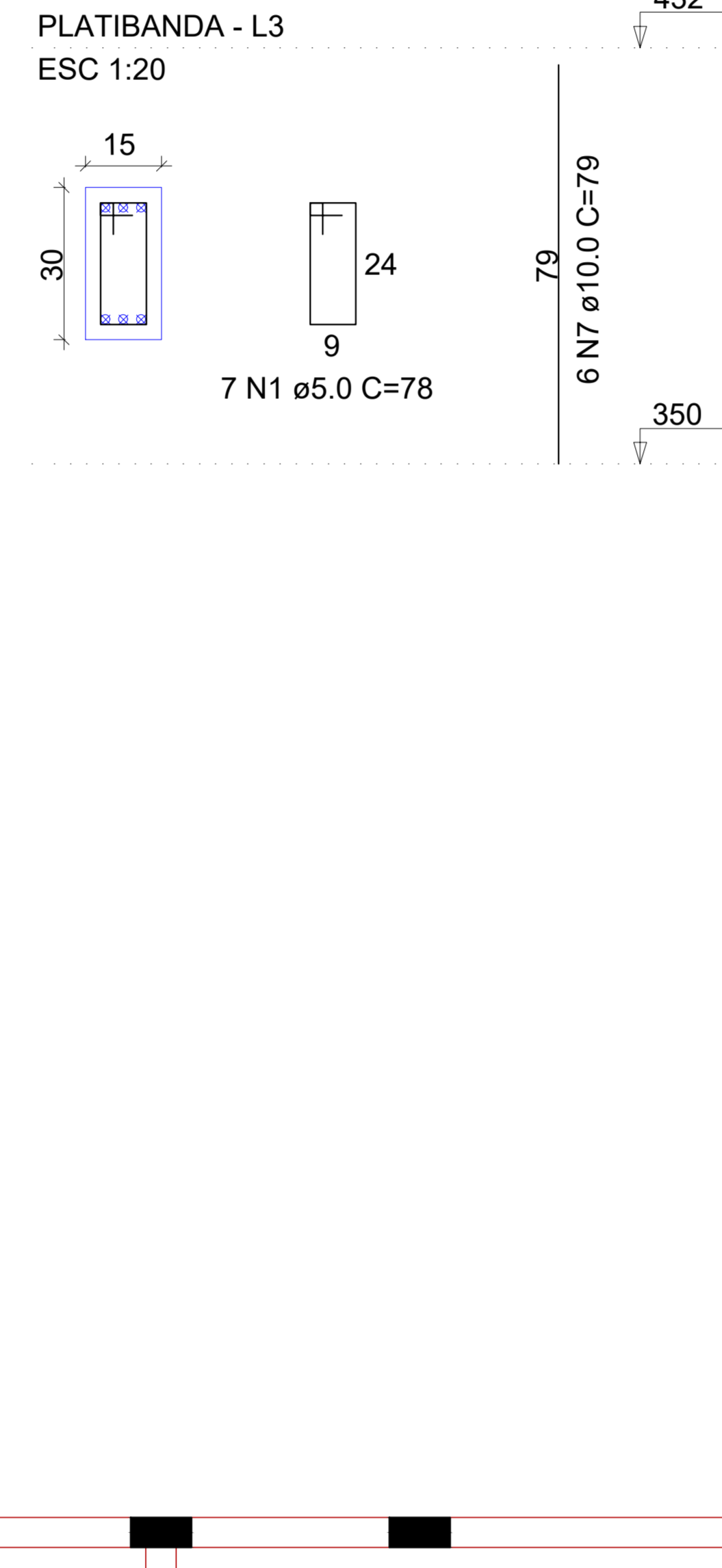
P14



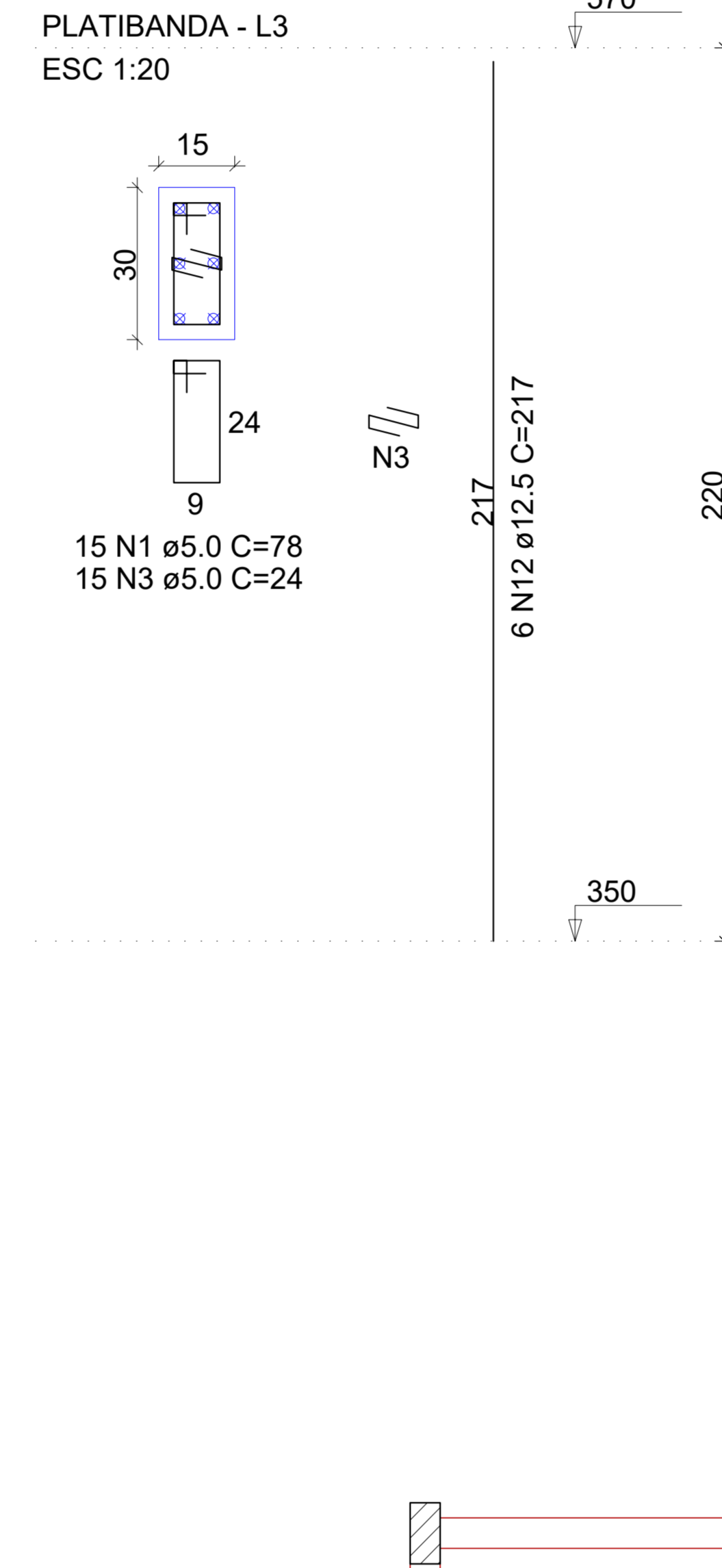
P1=P5



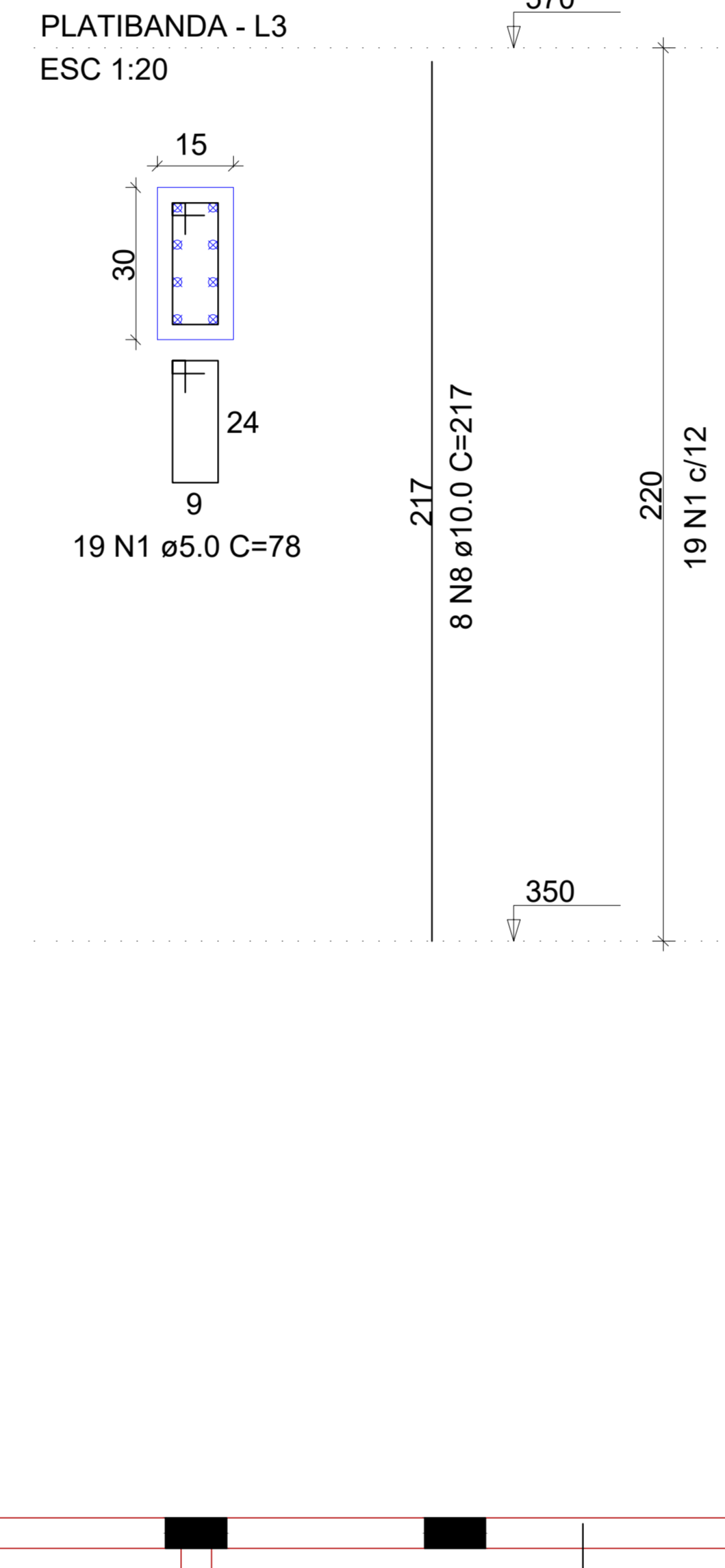
P6



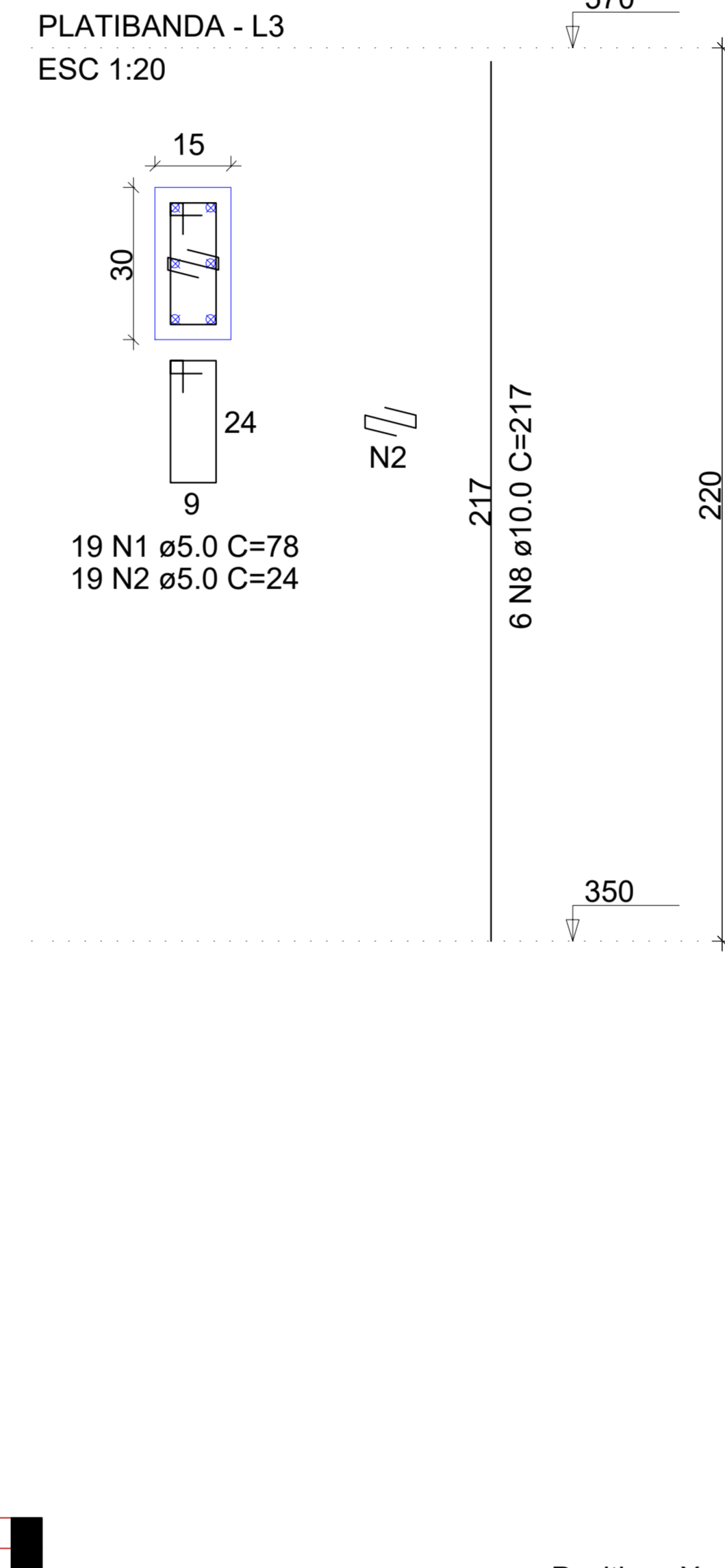
P12



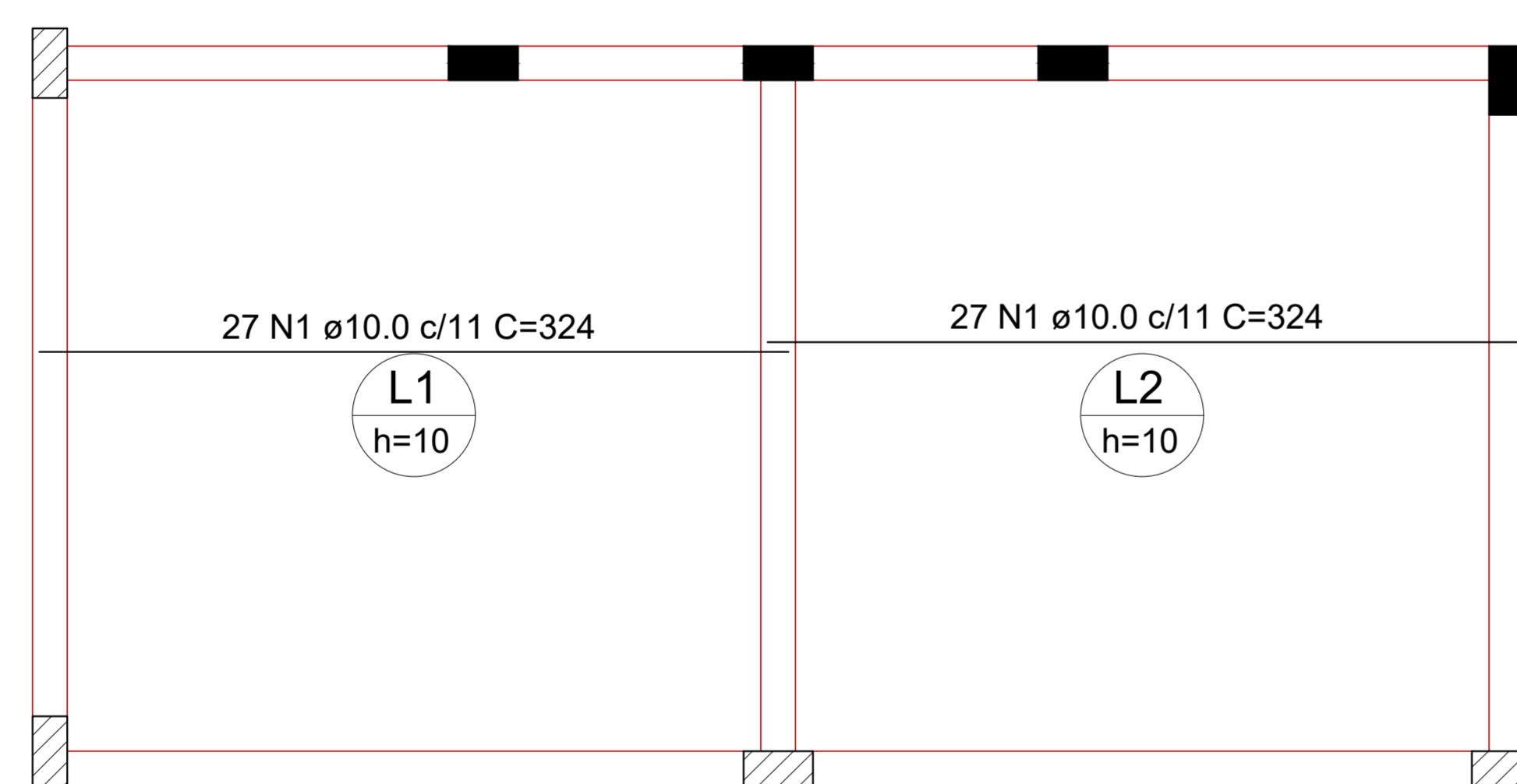
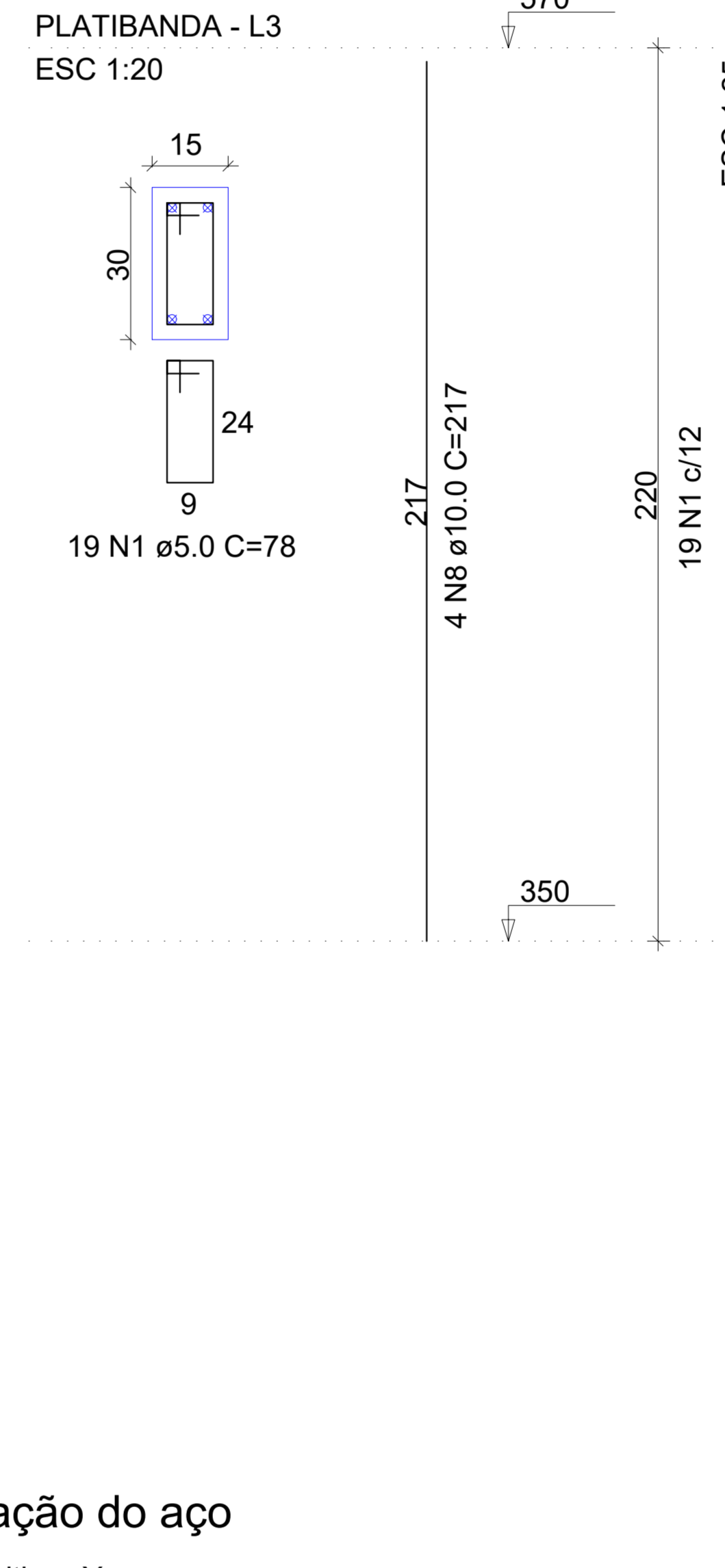
P13



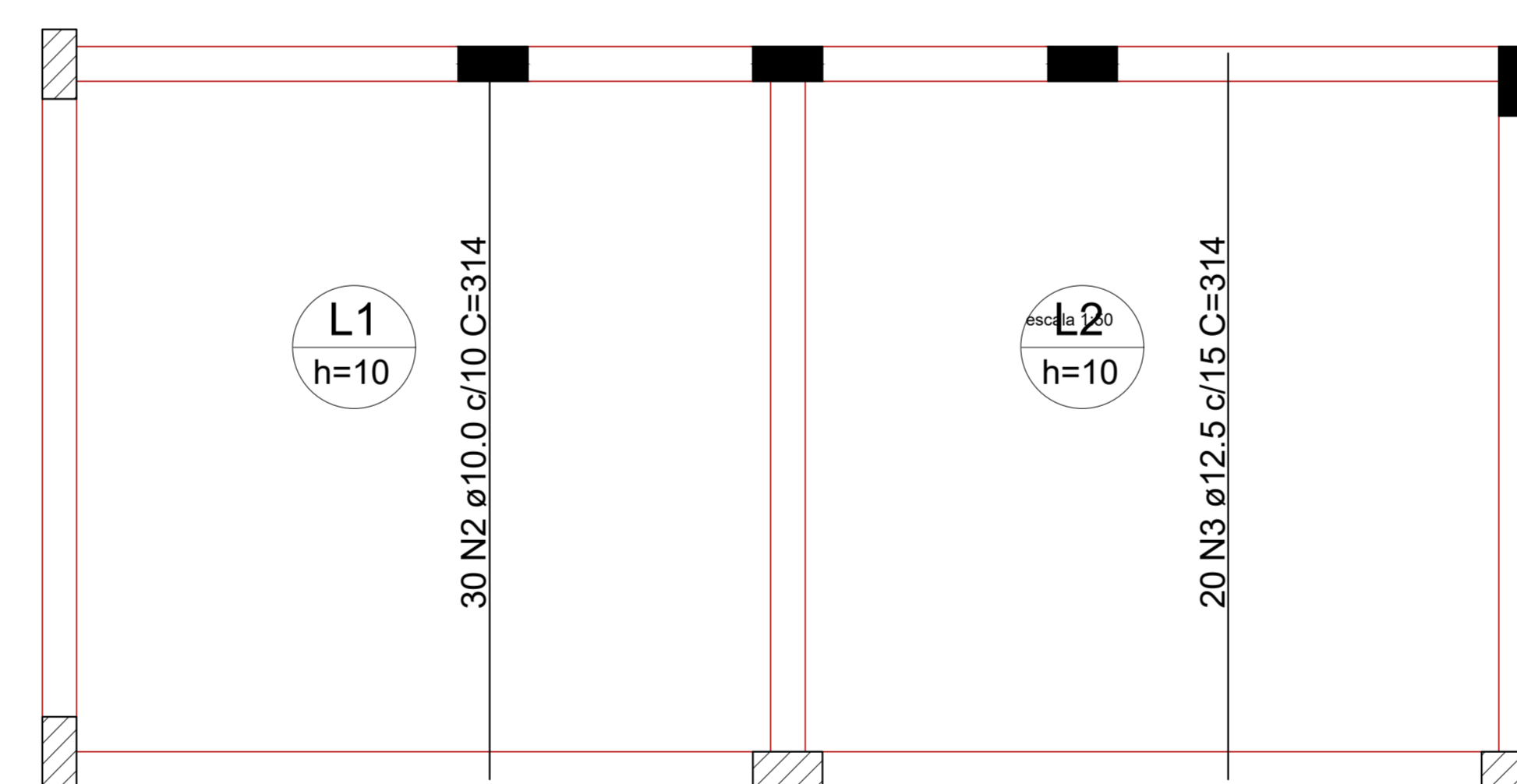
P14



P15



Armação positiva das lajes do pavimento Cinta (Eixo X)



Armação positiva das lajes do pavimento Cinta (Eixo Y)

Relação do aço

Cinta:	3xP1	5xP2
	P6	P8
	P10	P11
	P12	P13
	P14	
Platibanda:	2xP1	P6
	P12	P13
	P14	P15

AÇO	N	DIAM (mm)	QUANT	Ç UNIT (cm)	C.TOTAL (cm)
CA60	1	5.0	531	78	41418
	2	5.0	109	24	2616
	3	5.0	39	24	936
CA50	4	10.0	24	388	9312
	5	10.0	44	347	15268
	6	10.0	2	75	150
	7	10.0	14	79	1106
	8	10.0	18	217	3906
	9	12.5	12	347	4164
	10	12.5	6	94	564
	11	12.5	6	397	2382
	12	12.5	6	217	1302

Resumo do aço

AÇO	DIAM (mm)	C.TOTAL (m)	PESO (kg)
CA50	10.0	297.5	183.4
CA60	5.0	449.7	69.3
PESO TOTAL (kg)			
CA50		264.4	
CA60		69.3	

Volume de concreto (C-25) = 2.87 m³  
Área de forma = 57.38 m²

Relação do aço

Positivos X		Positivos Y		C.TOTAL (cm)	
AÇO	N	DIAM (mm)	QUANT Ç UNIT (cm)		
CA50	1	10.0	54	324	17496
	2	10.0	30	314	9420
	3	12.5	20	314	6280

Resumo do aço

AÇO	DIAM (mm)	C.TOTAL (m)	PESO (kg)
CA50	10.0	269.2	165.9
	12.5	62.8	60.5
PESO TOTAL (kg)			
CA50		226.4	

Volume de concreto (C-25) = 1.75 m³  
Área de forma = 17.48 m²

<b>APROVADO</b> PREFEITURA MUN. DE AVELINÓPOLIS - GOIÁS		ANO: 2025	TIPO: EST	FOLHA: 02/07	MODIFICAÇÕES:
DATA: 07/07/2025 <i>Rogério Palmeira Essado</i>					A
CONVENIENTE: PREFEITURA MUNICIPAL DE AVELINÓPOLIS - GO		LOCAL: FAZENDA JOSÉ DE LIMA, DISTRITO DO POVOADO ALLAN KARDEC - AVELINÓPOLIS - GO			B
OBRA: Construção de uma Feira do Produtor rural coberta no Município de Avelinópolis - GO		ÁREAS: CONSTRUTIVA: 303.00m² CORREDOR: 402.70m² REFORMAS: 00m² TOTAL: 705.70m²			C
PILARES E LAJES		DESENHO: JHONATHAN			D
AUTOR: ROGERIO PALMEIRA ESSADO ENGENHEIRO CIVIL CREA: 9111 - 15/GO		DATA: 10/03/2025			E
PREFEITURA MUNICIPAL DE AVELINÓPOLIS		DIM: METRO			F
AUTOR:		ESCALA: INDICADA			G
V I S T O					H
					I