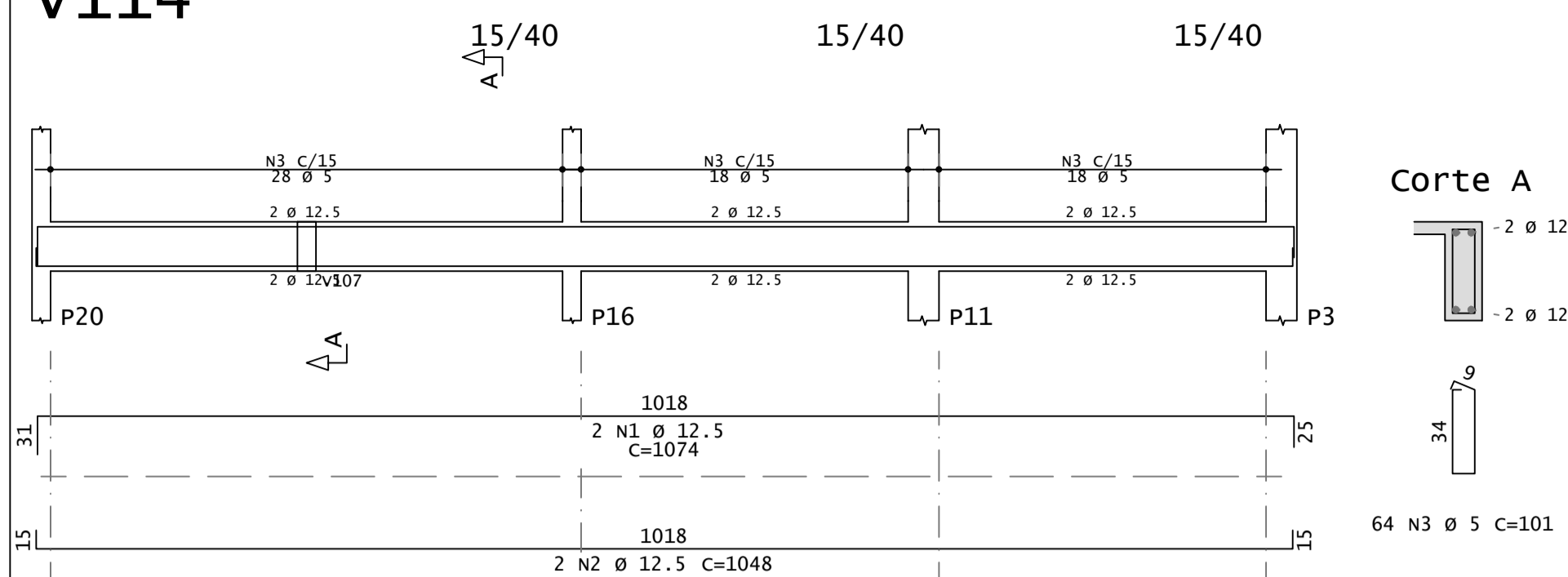
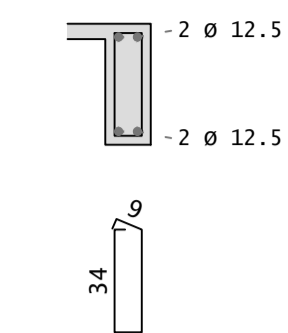


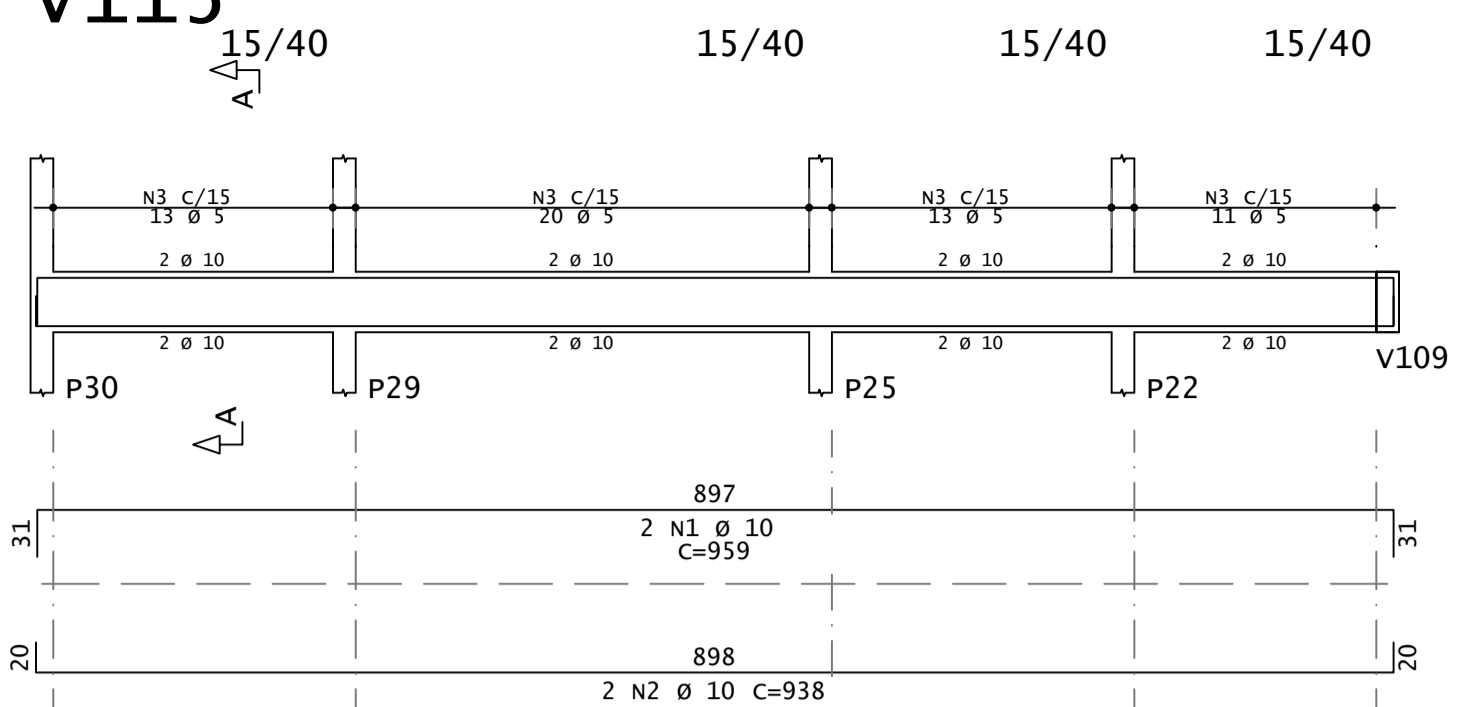
V114



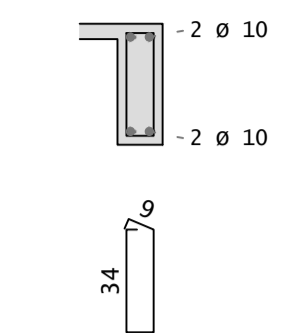
Corte A



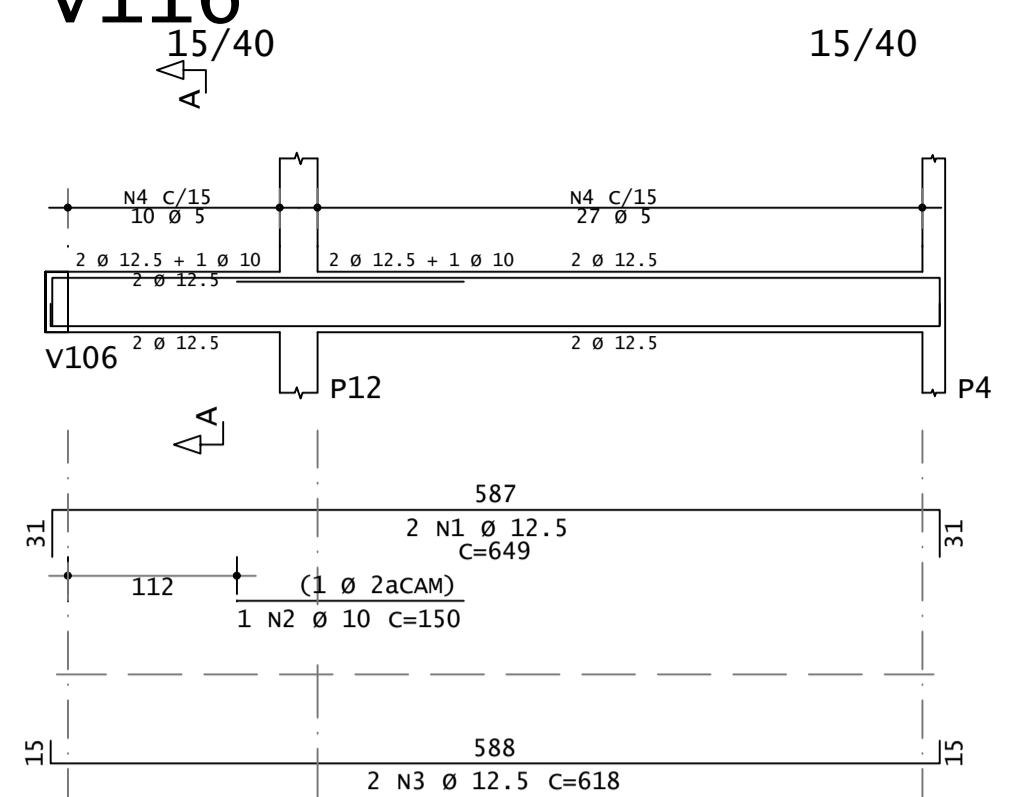
V115



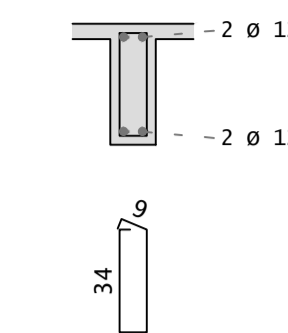
Corte A



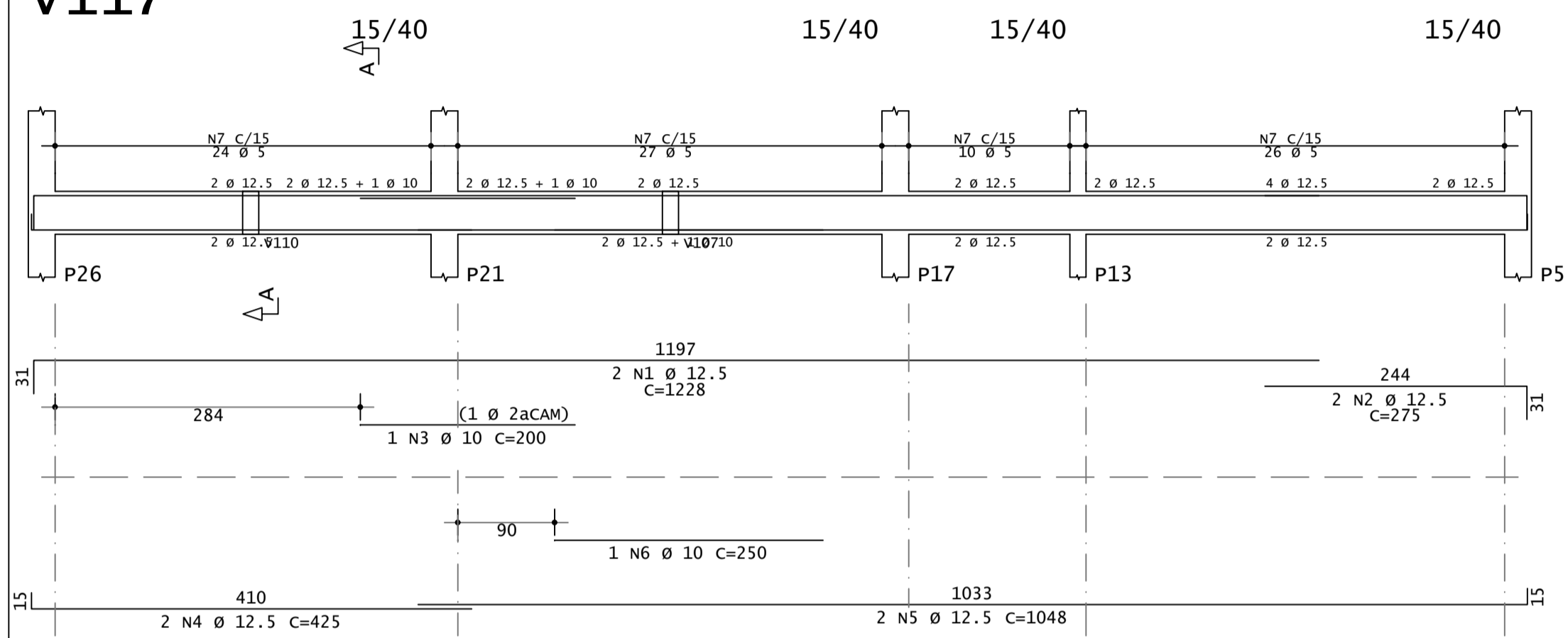
V116



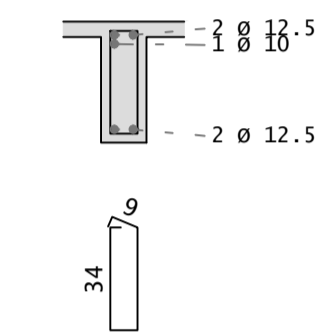
Corte A



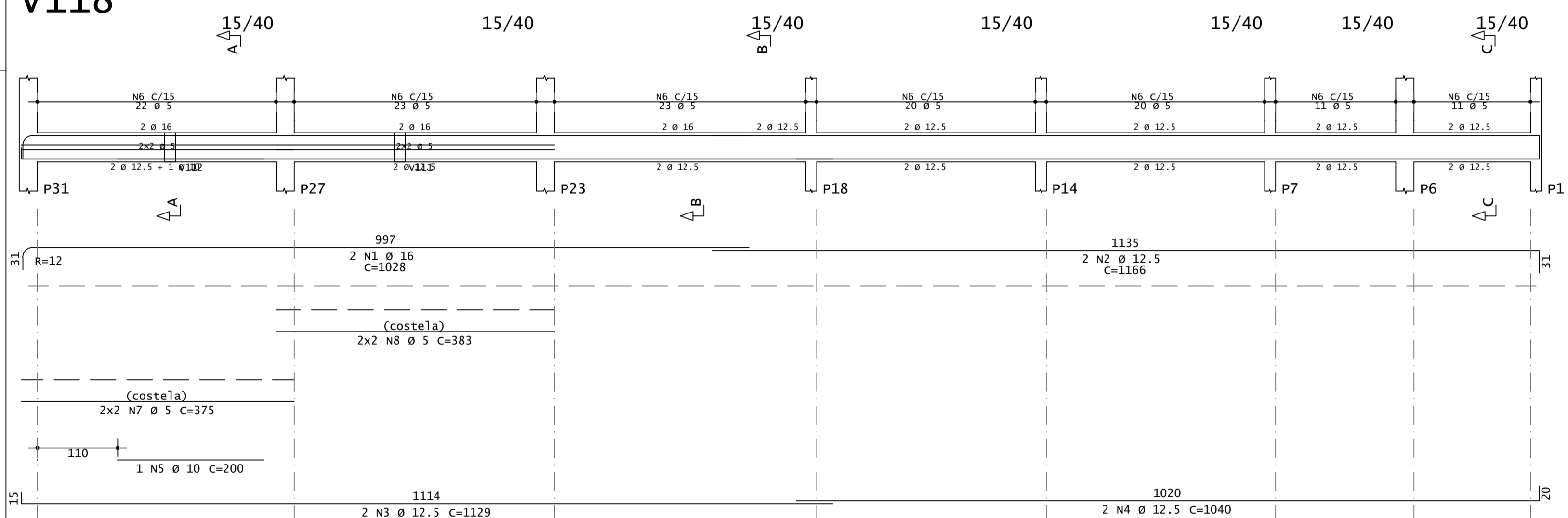
V117



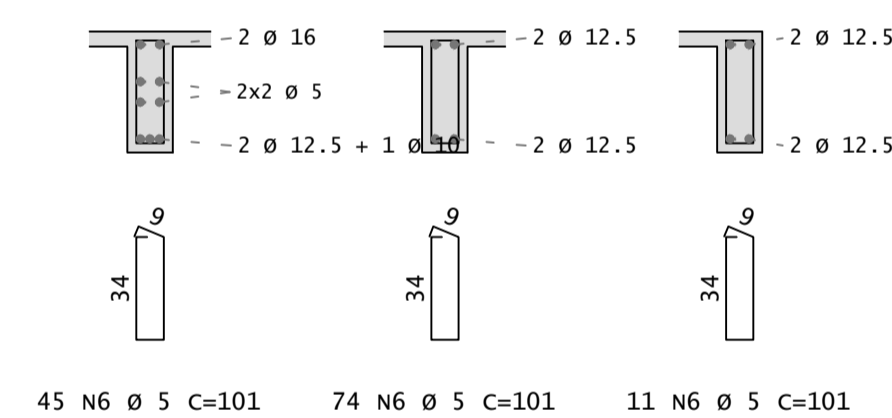
Corte A



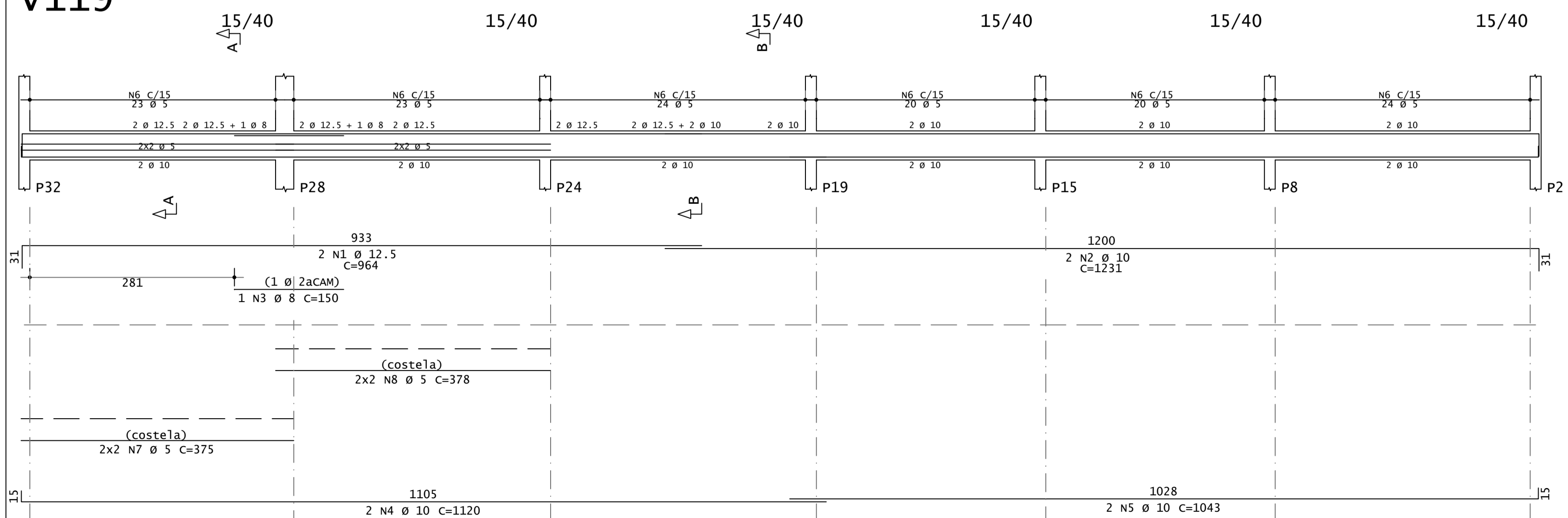
V118



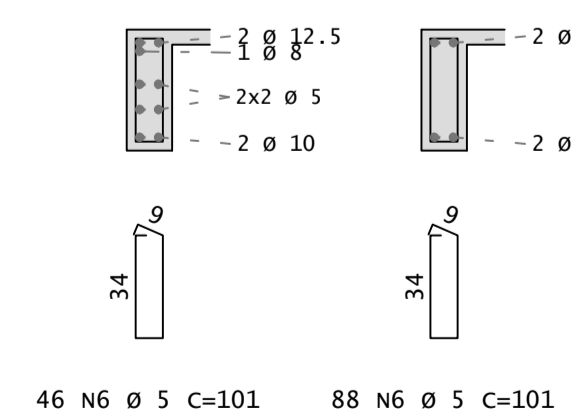
Corte A Corte B Corte C



V119



Corte A Corte B



AÇO	POS	BIT	QUANT	COMPRIMENTO	
				UNIT	TOTAL
				cm	cm
V114					
50A	1	12.5	2	1074	2148
50A	2	12.5	2	1048	2096
60A	3	5	64	101	6464
V115					
50A	1	10	2	959	1918
50A	2	10	2	938	1876
60A	3	5	57	101	5757
V116					
50A	1	12.5	2	649	1298
50A	2	10	1	150	150
50A	3	12.5	2	618	1236
60A	4	5	37	101	3737
V117					
50A	1	12.5	2	1228	2456
50A	2	12.5	2	275	550
50A	3	10	1	200	200
50A	4	12.5	2	425	850
50A	5	12.5	2	1048	2096
50A	6	10	1	250	250
60A	7	5	87	101	8787
V118					
50A	1	16	2	1028	2056
50A	2	12.5	2	1166	2332
50A	3	12.5	2	1129	2258
50A	4	12.5	2	1040	2080
50A	5	10	1	200	200
60A	6	5	130	101	13130
60A	7	5	4	375	1500
60A	8	5	4	383	1532
V119					
50A	1	12.5	2	964	1928
50A	2	10	2	1231	2462
50A	3	8	1	150	150
50A	4	10	2	1120	2240
50A	5	10	2	1043	2086
60A	6	5	134	101	13534
60A	7	5	4	375	1500
60A	8	5	4	378	1512

RESUMO DE AÇO			
AÇO	BIT	DE COMPR	PESO
		m	kgf
60A	5	575	88
50A	8	2	1
50A	10	114	70
50A	12.5	213	205
50A	16	21	32
Peso Total		60A =	88 kgf
Peso Total		50A =	309 kgf

PROJETO ESTRUTURAL DE VIGAS

9/14

DESCRIÇÃO: PROJETO PARA CONSTRUÇÃO DO CENTRO DE REFERÊNCIA DA ASSISTÊNCIA SOCIAL DE NOVO CABRAIS
LOCAL: AVENIDA 25 DE JULHO - QUADRA 11 - CENTRO NOVO CABRAIS RIO GRANDE DO SUL
PROPRIETÁRIOS (A): PREFEITURA MUNICIPAL DE NOVO CABRAIS CNPJ: 01.601.856/0001-85
ESCALA: INDICADAS
ART: 14122737 DATA: NOV/2025

CARIMBOS DA PREFEITURA
ÁREAS
 DO TERRENO: 678,31 m²
 A CONSTRUIR: 198,96 m²
 TOTAL DA CONSTRUÇÃO: 198,96 m²
 TAXA DE OCUPAÇÃO: 29,33%
PROPRIETÁRIO
 PREFEITURA MUNICIPAL DE NOVO CABRAIS
 CNPJ: 01.601.856/0001-85
RESPONSÁVEL TÉCNICO
 GUILHERME MARIN RADISKE
 ENGENHEIRO CIVIL
 CREA: RS25737



PREFEITURA MUNICIPAL DE NOVO CABRAIS

AVENIDA 28 DE DEZEMBRO, 1200 - CENTRO - NOVO CABRAIS, RS
 FONE: (51) 99570-8061
 EMAIL: novocabrais@novocabrais.rs.gov.br