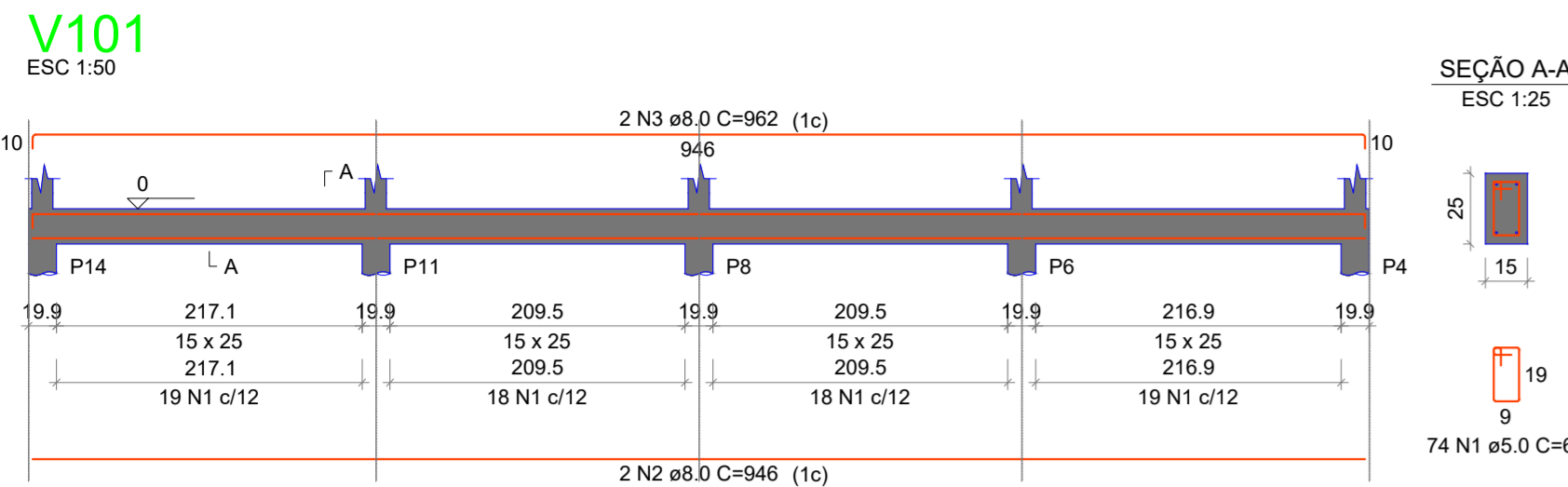


VIGAS - Nível 852,00



RELAÇÃO DO AÇO

AÇO	N	DIAM (mm)	QUANT	C.UNIT (cm)	C.TOTAL (cm)
CA60	1	5.0	74	67	4958
CA50	2	8.0	2	946	1892
CA50	3	8.0	2	962	1924

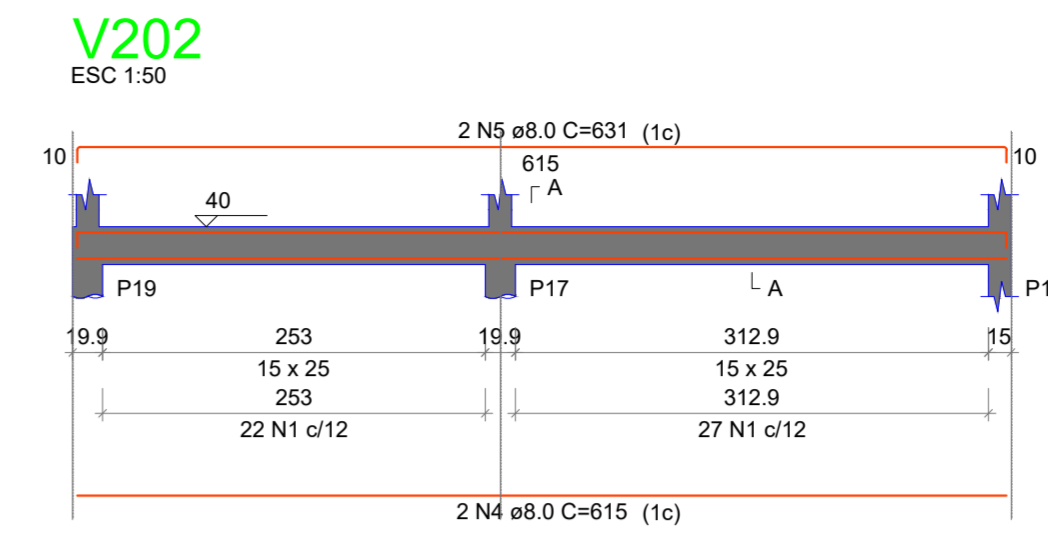
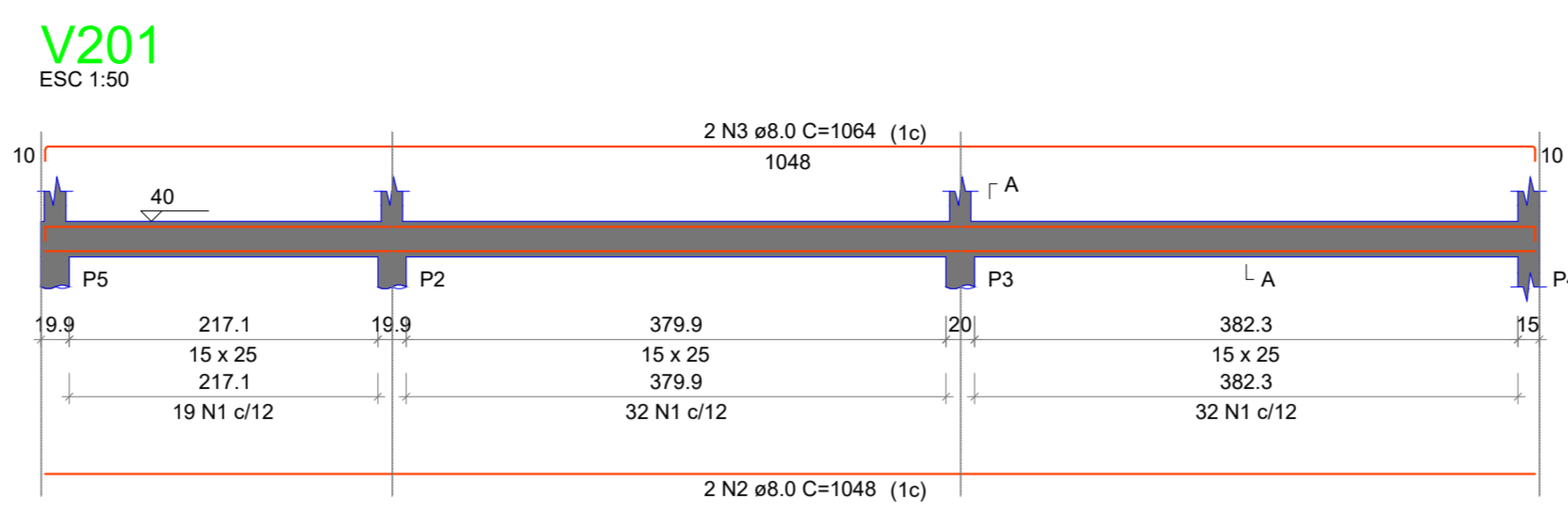
RESUMO DO AÇO

AÇO	DIAM (mm)	C.TOTAL (m)	PESO + 10% (kg)
CA50	8.0	38.2	16.6
CA60	5.0	49.6	8.4

PESO TOTAL (kg): CA50 16.6, CA60 8.4

Volume de concreto (C-25) = 0.32 m³
Área de forma = 5.55 m²

VIGAS - Nível 852,40



RELAÇÃO DO AÇO

AÇO	N	DIAM (mm)	QUANT	C.UNIT (cm)	C.TOTAL (cm)
CA60	1	5.0	132	67	8844
CA50	2	8.0	2	1048	2096
CA50	3	8.0	2	1064	2128
CA50	4	8.0	2	615	1230
CA50	5	8.0	2	631	1262

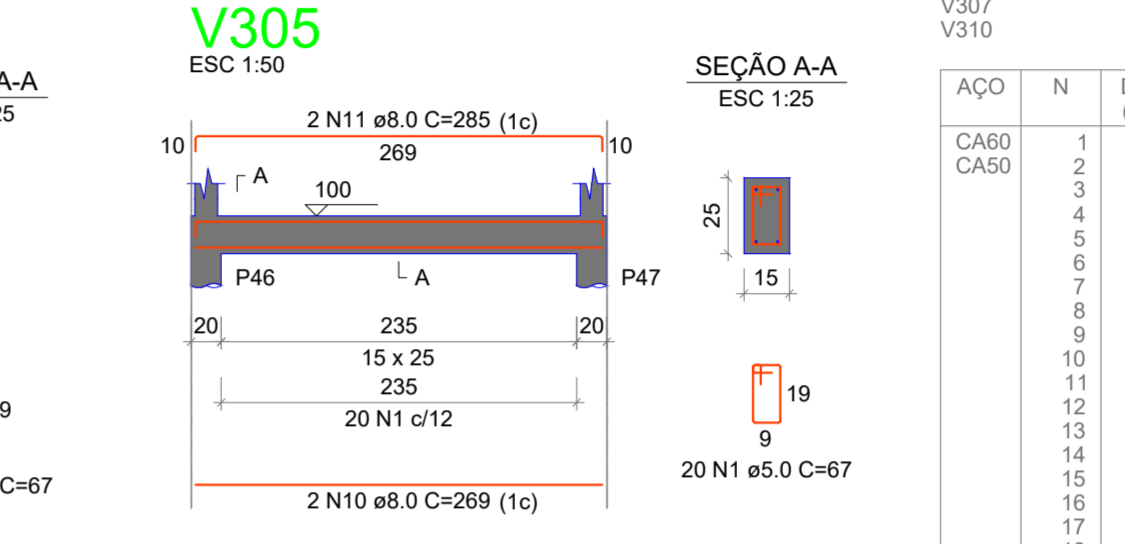
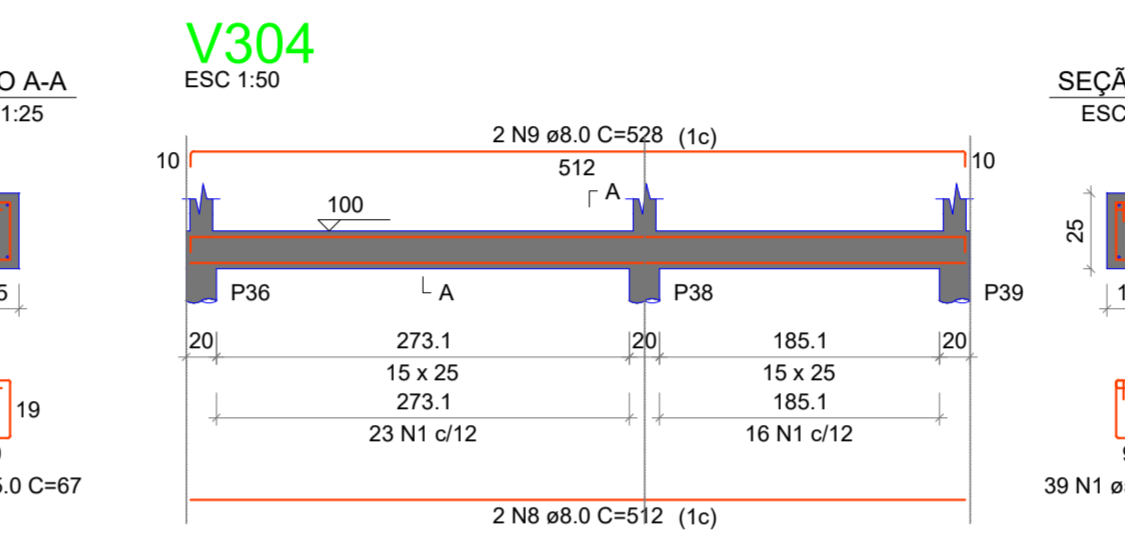
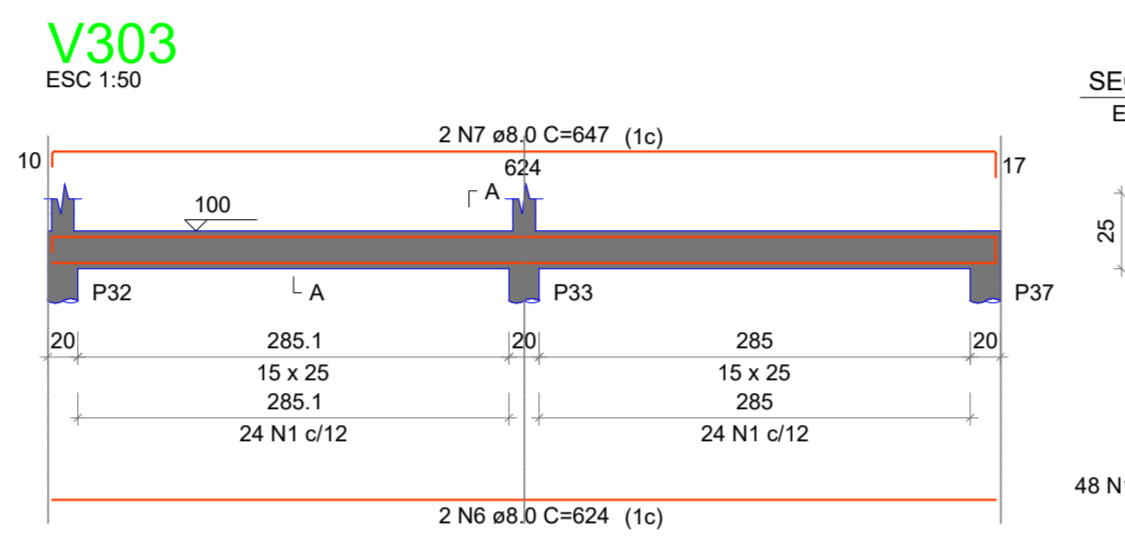
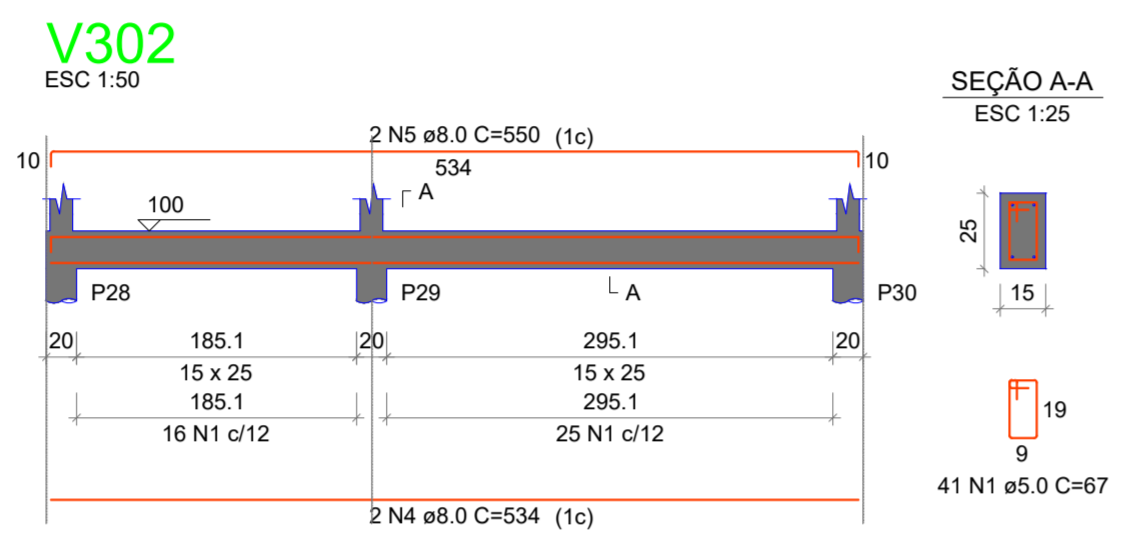
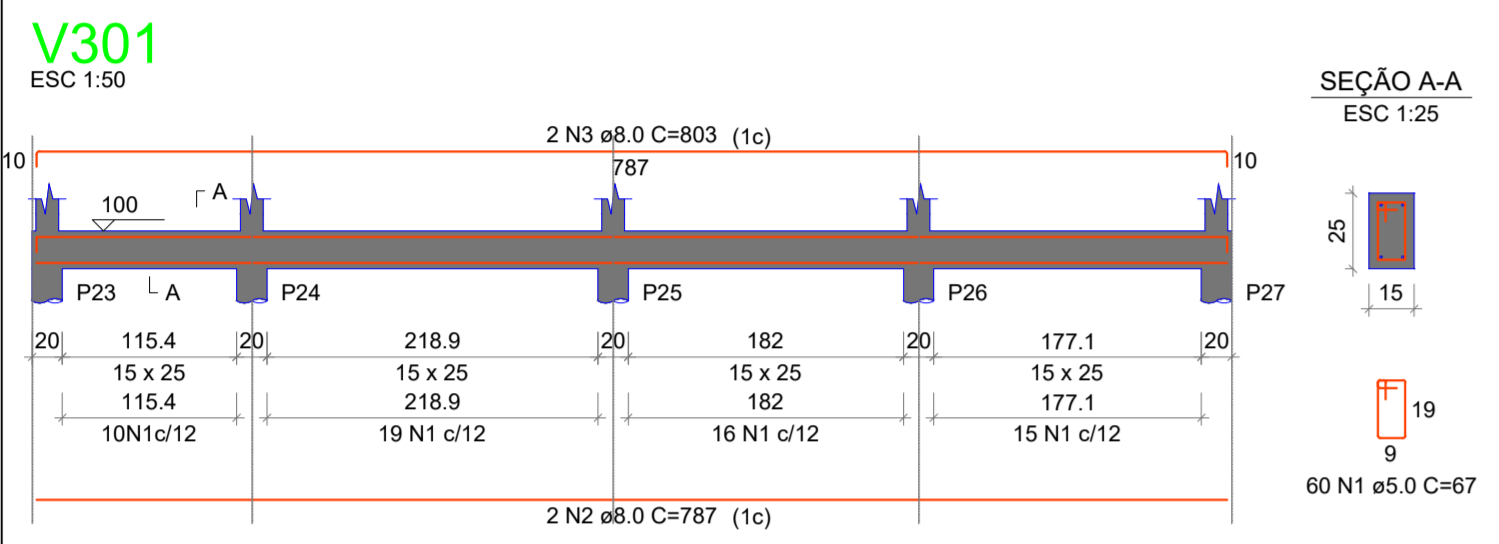
RESUMO DO AÇO

AÇO	DIAM (mm)	C.TOTAL (m)	PESO + 10% (kg)
CA50	8.0	67.2	29.2
CA60	5.0	88.4	15

PESO TOTAL (kg): CA50 29.2, CA60 15

Volume de concreto (C-25) = 0.59 m³
Área de forma = 10.30 m²

VIGAS - Nível 853,00



RELAÇÃO DO AÇO

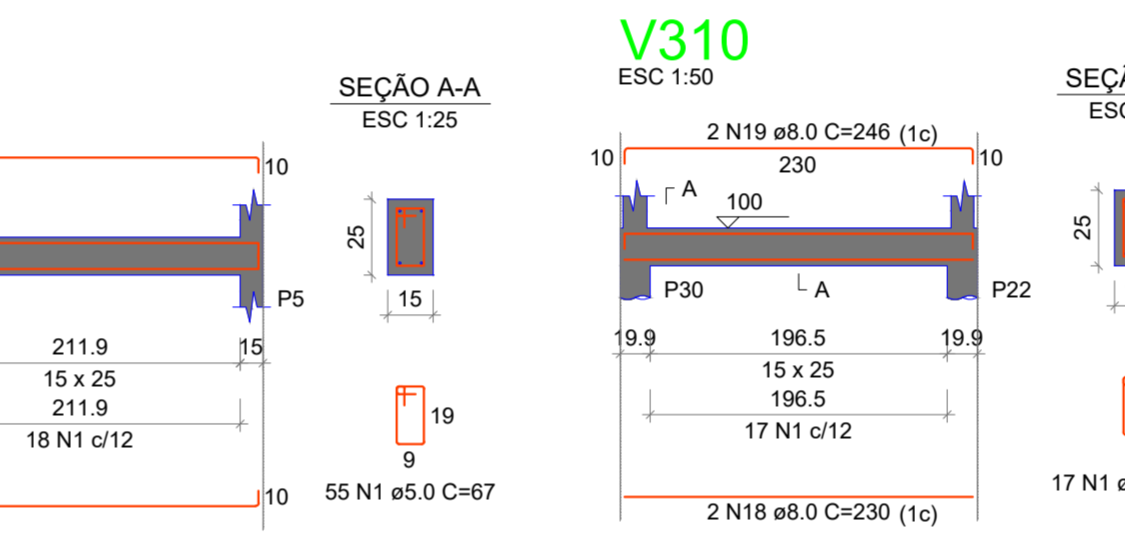
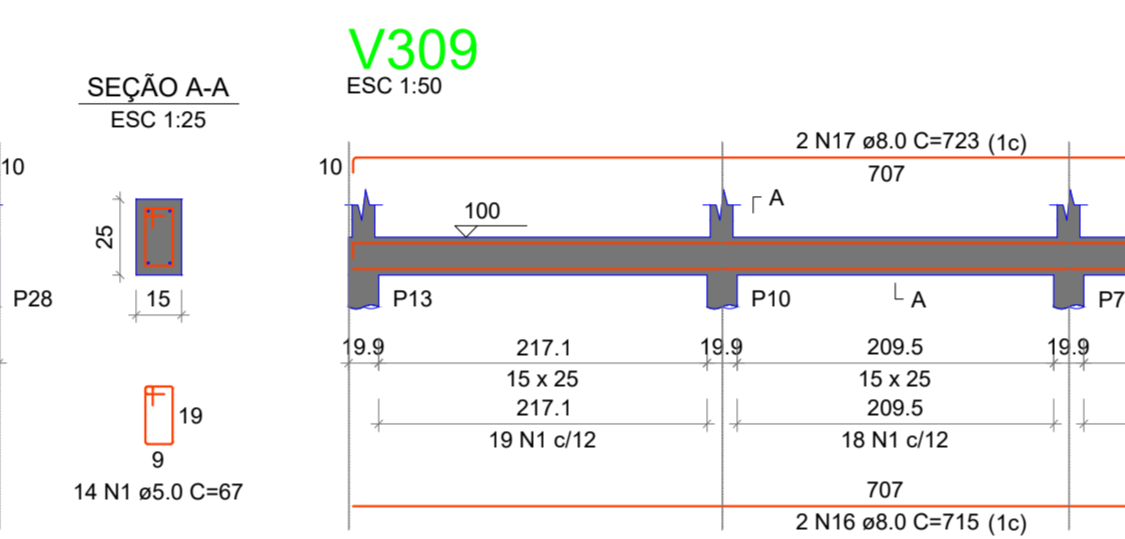
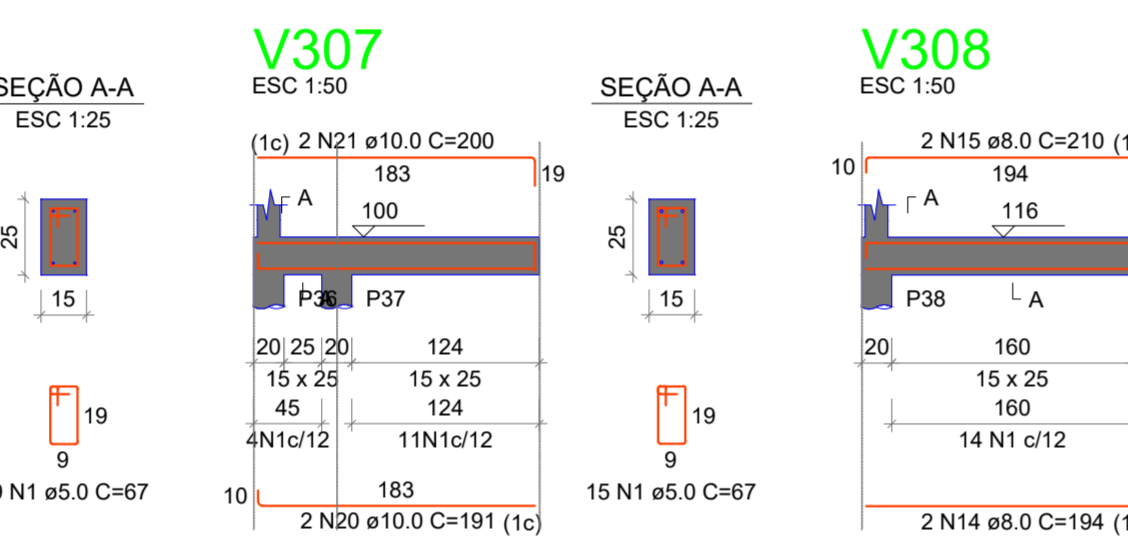
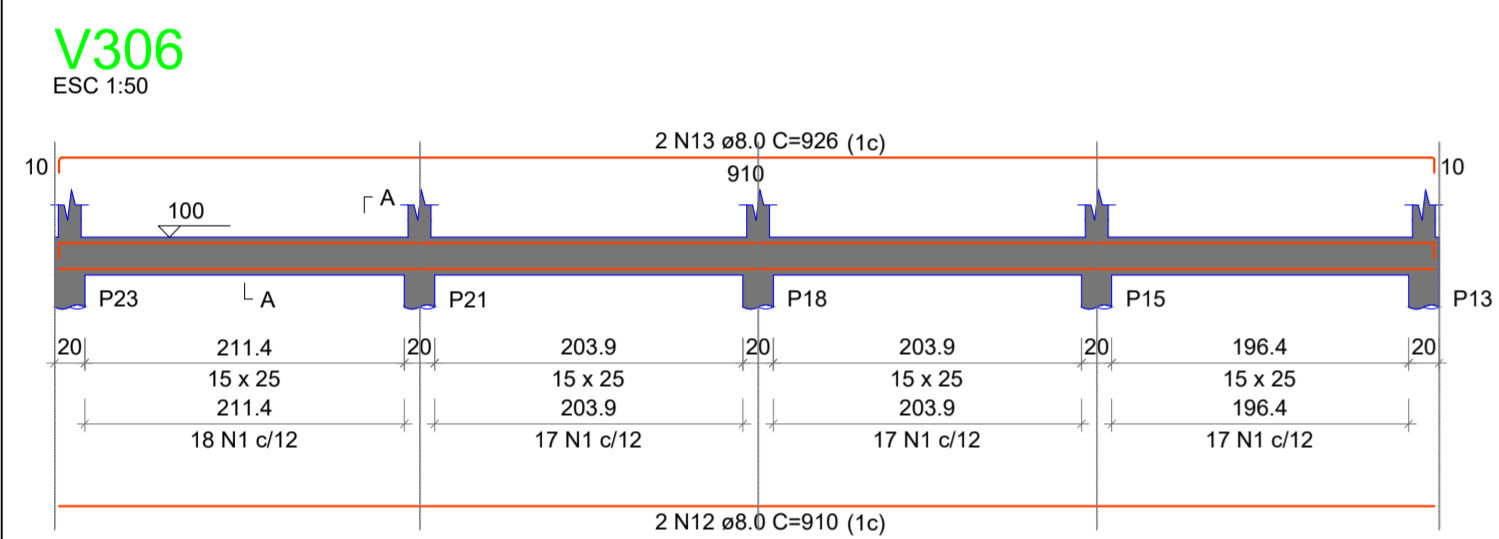
AÇO	N	DIAM (mm)	QUANT	C.UNIT (cm)	C.TOTAL (cm)
CA60	1	5.0	378	67	25326
CA50	2	8.0	2	787	1574
CA50	3	8.0	2	803	1606
CA50	4	8.0	2	534	1068
CA50	5	8.0	2	550	1100
CA50	6	8.0	2	624	1248
CA50	7	8.0	2	647	1294
CA50	8	8.0	2	512	1024
CA50	9	8.0	2	528	1056
CA50	10	8.0	2	269	538
CA50	11	8.0	2	285	570
CA50	12	8.0	2	910	1820
CA50	13	8.0	2	926	1852
CA50	14	8.0	2	194	388
CA50	15	8.0	2	210	420
CA50	16	8.0	2	715	1430
CA50	17	8.0	2	723	1446
CA50	18	8.0	2	230	460
CA50	19	8.0	2	246	492
CA50	20	10.0	2	191	382
CA50	21	10.0	2	200	400

RESUMO DO AÇO

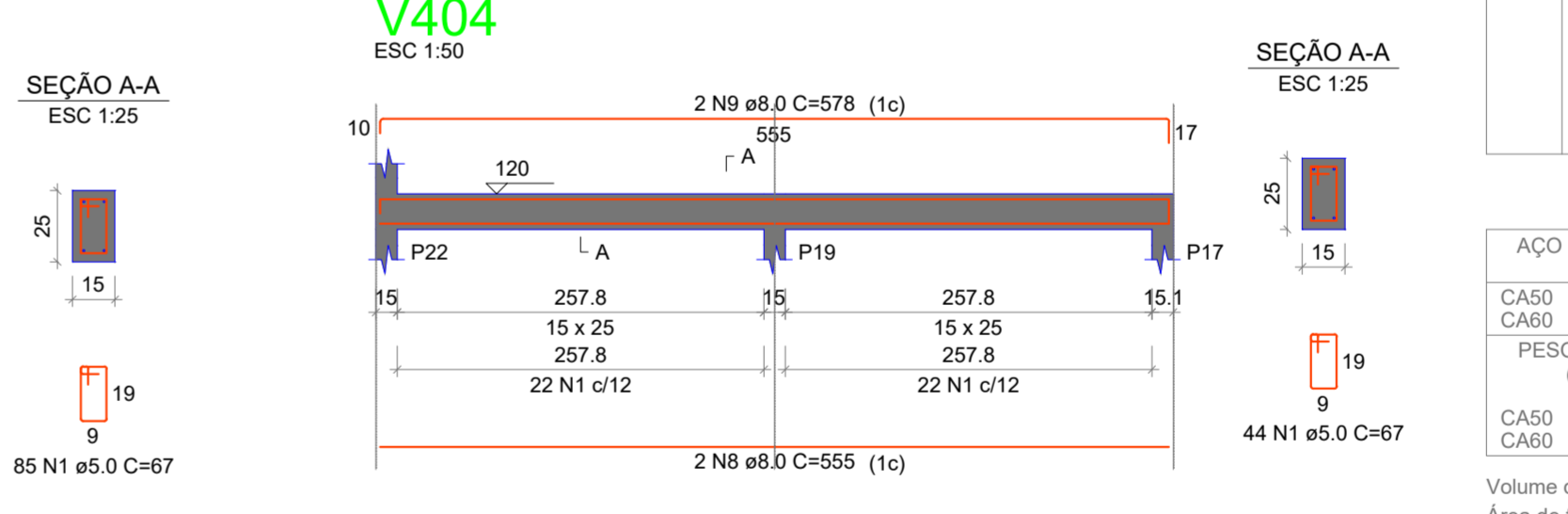
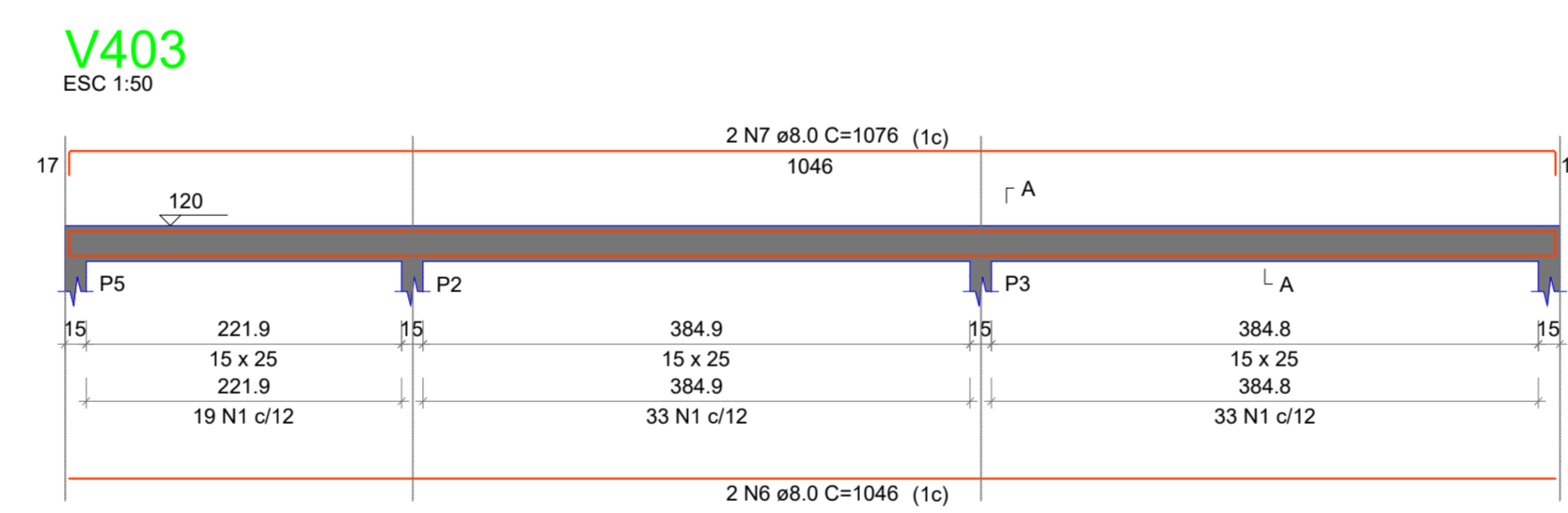
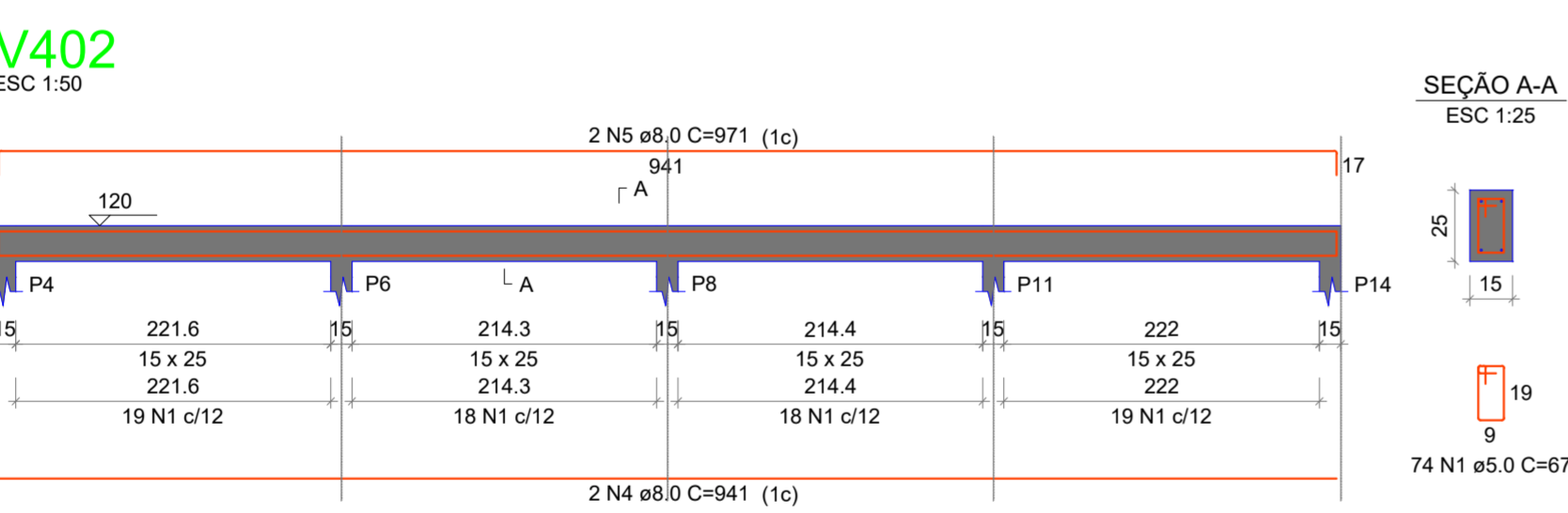
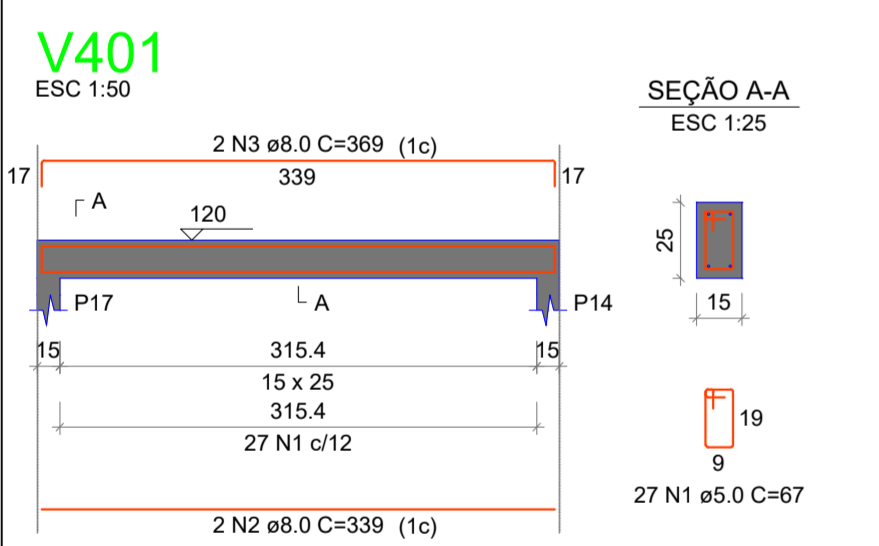
AÇO	DIAM (mm)	C.TOTAL (m)	PESO + 10% (kg)
CA50	8.0	193.9	84.1
CA60	5.0	7.8	5.3
CA60	5.0	253.3	42.9

PESO TOTAL (kg): CA50 89.4, CA60 42.9

Volume de concreto (C-25) = 1.74 m³
Área de forma = 30.21 m²



VIGAS - Nível 853,20



RELAÇÃO DO AÇO

AÇO	N	DIAM (mm)	QUANT	C.UNIT (cm)	C.TOTAL (cm)
CA60	1	5.0	230	67	15410
CA50	2	8.0	2	339	678
CA50	3	8.0	2	369	738
CA50	4	8.0	2	941	1882
CA50	5	8.0	2	971	1942
CA50	6	8.0	2	1046	2092
CA50	7	8.0	2	1076	2152
CA50	8	8.0	2	555	1110
CA50	9	8.0	2	578	1156

RESUMO DO AÇO

AÇO	DIAM (mm)	C.TOTAL (m)	PESO + 10% (kg)
CA50	8.0	117.5	51
CA60	5.0	154.1	26.1

PESO TOTAL (kg): CA50 51, CA60 26.1

Volume de concreto (C-25) = 1.01 m³
Área de forma = 17.53 m²

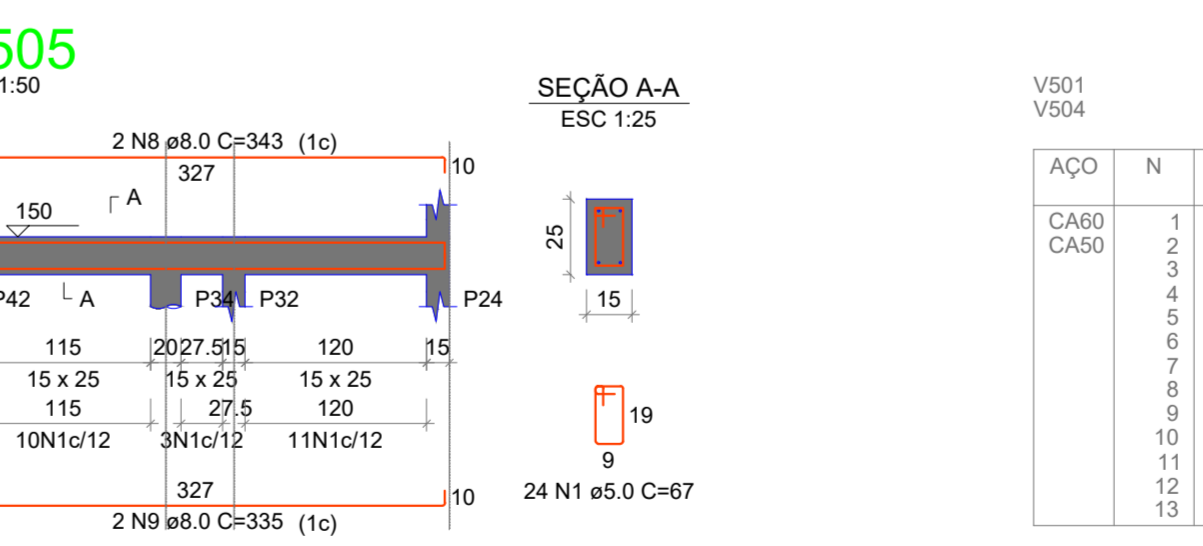
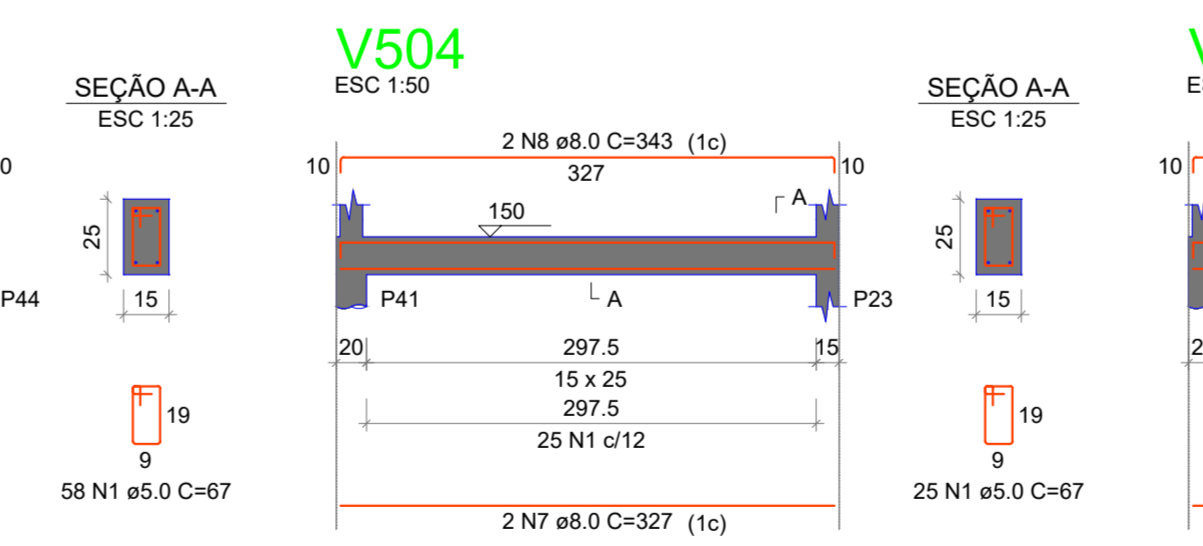
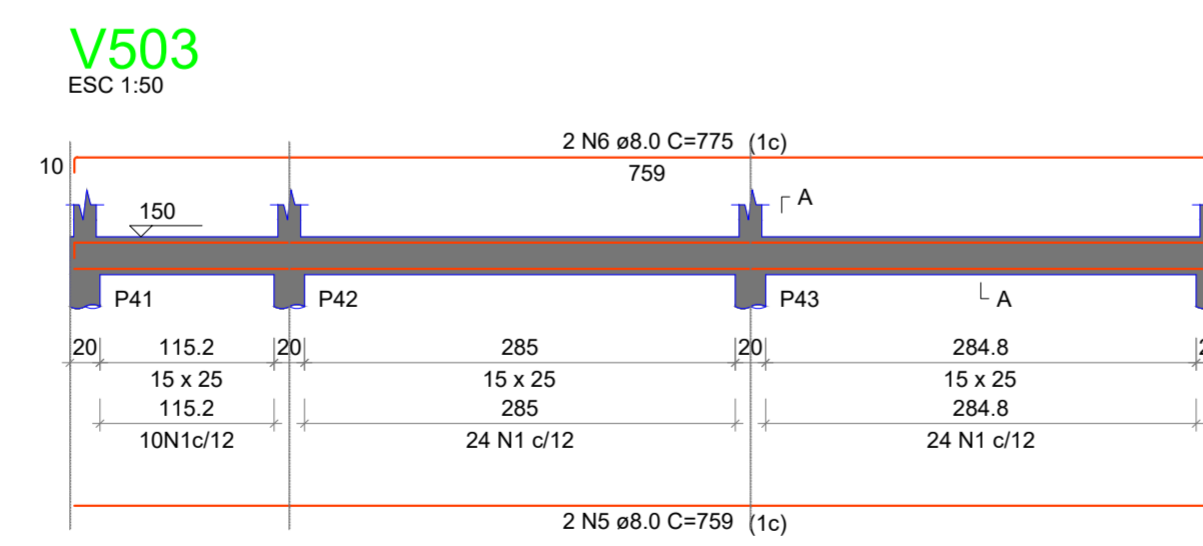
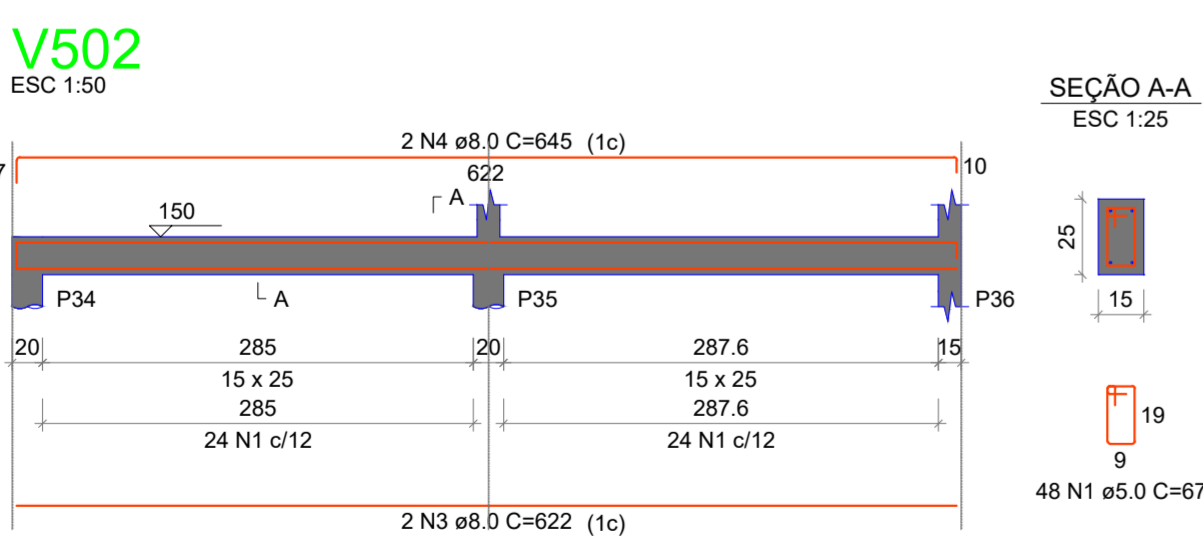
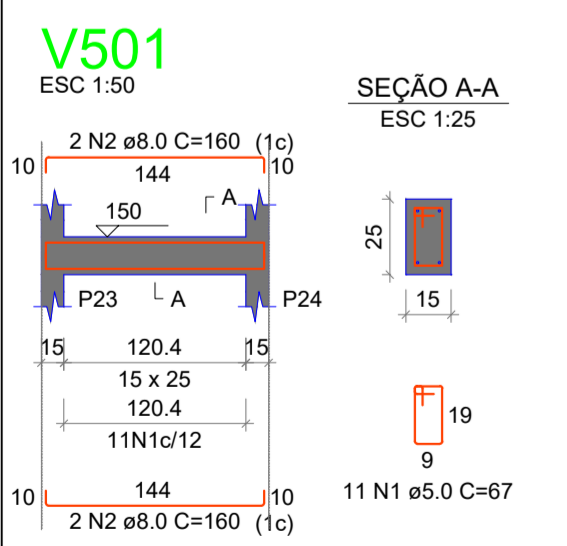
RESUMO DO AÇO DE TODAS AS VIGAS DA PRAÇA

AÇO	DIAM (mm)	C.TOTAL (m)	PESO + 10% (kg)
CA50	8.0	1850.5	803.2
CA60	5.0	2358.6	37.8
CA60	5.0	2358.6	399.9

PESO TOTAL (kg): CA50 828.7, CA60 399.9

Volume de concreto (C-25) = 16.25 m³
Área de forma = 282.19 m²

VIGAS - Nível 853,50



RELAÇÃO DO AÇO

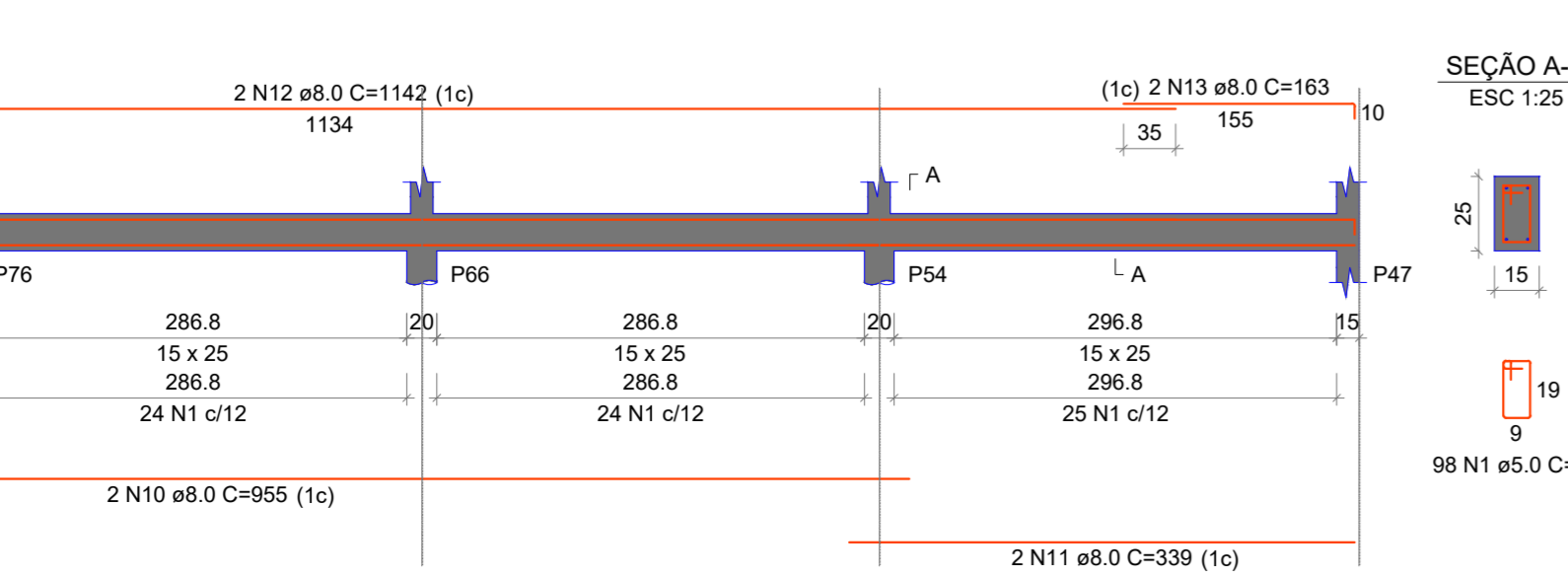
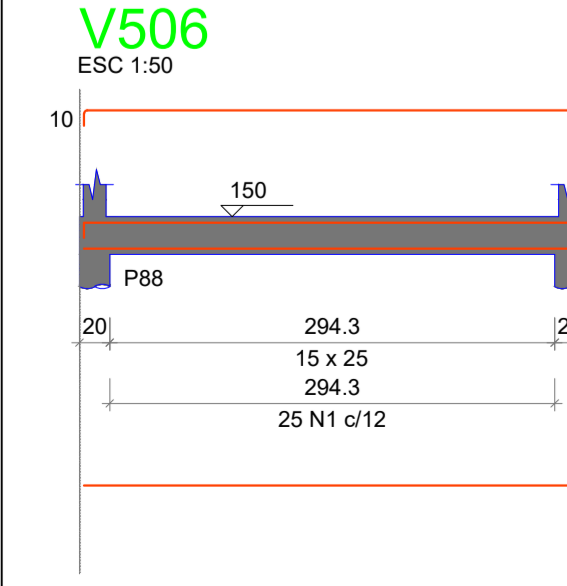
AÇO	N	DIAM (mm)	QUANT	C.UNIT (cm)	C.TOTAL (cm)
CA60	1	5.0	264	67	17688
CA50	2	8.0	4	160	640
CA50	3	8.0	2	622	1244
CA50	4	8.0	2	645	1290
CA50	5	8.0	2	759	1518
CA50	6	8.0	2	775	1550
CA50	7	8.0	2	327	654
CA50	8	8.0	4	343	1372
CA50	9	8.0	2	335	670
CA50	10	8.0	2	955	1910
CA50	11	8.0	2	339	678
CA50	12	8.0	2	1142	2284
CA50	13	8.0	2	163	326

RESUMO DO AÇO

AÇO	DIAM (mm)	C.TOTAL (m)	PESO + 10% (kg)
CA50	8.0	141.4	61.4
CA60	5.0	178.9	30

PESO TOTAL (kg): CA50 61.4, CA60 30

Volume de concreto (C-25) = 1.22 m³
Área de forma = 21.21 m²



AMURES ASSOCIAÇÃO DE MUNICÍPIOS DA REGIÃO SERRANA

PREFEITURA MUNICIPAL DE BOCÁINA DO SUL - SC

06/10

ASSESSORIA TÉCNICA: **Projeto Estrutural**

PROJETO: **Matheus Lorenzetti Casagrande**
Eng. Civil - CREA 160793-1

PREFEITO: **João Eduardo Della Justina**

DESENHO: **Matheus Lorenzetti Casagrande** ART: **9746080-1** Escala: **Indicada** DATA: **03/2025**

Área Total: **1026,16 m²**
Localização: Rua Projetada - Prolongamento da Rua Pedro Feldhaus ; Centro ; 88538-000 ; s/n°

Observações:
O resumo do aço de todas as vigas da praça tem como objetivo facilitar o cálculo quantitativo, considerando que a praça possui vários níveis de vigas separados. Cada quantitativo está detalhado em uma prancha específica, organizada por nível.