

# PROJETO COMPLETO

DATA: MARÇO/2026

FOLHA: 01 A 10

TÍTULO: REFORMA E ADEQUAÇÕES NA COZINHA PILOTO MUNICIPAL

OBJETO: ADEQUAÇÕES JUNTO A VIGILÂNCIA SANITÁRIA

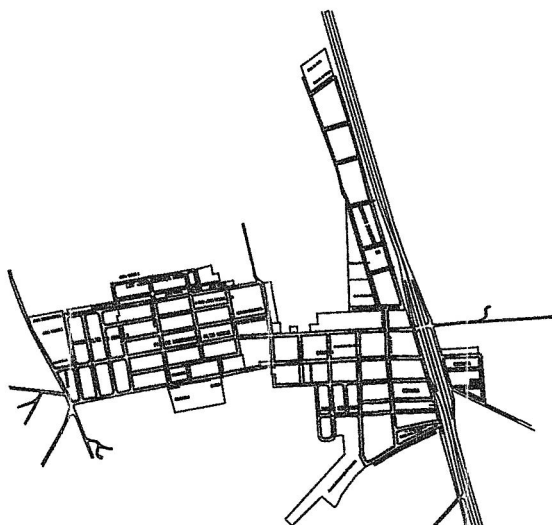
LOCAL: RUA SÃO LOURENÇO, N° 291

BAIRRO: DISTRITO INDUSTRIAL I

PROPRIETÁRIO: PREFEITURA MUNICIPAL DE TAQUARAL - SP

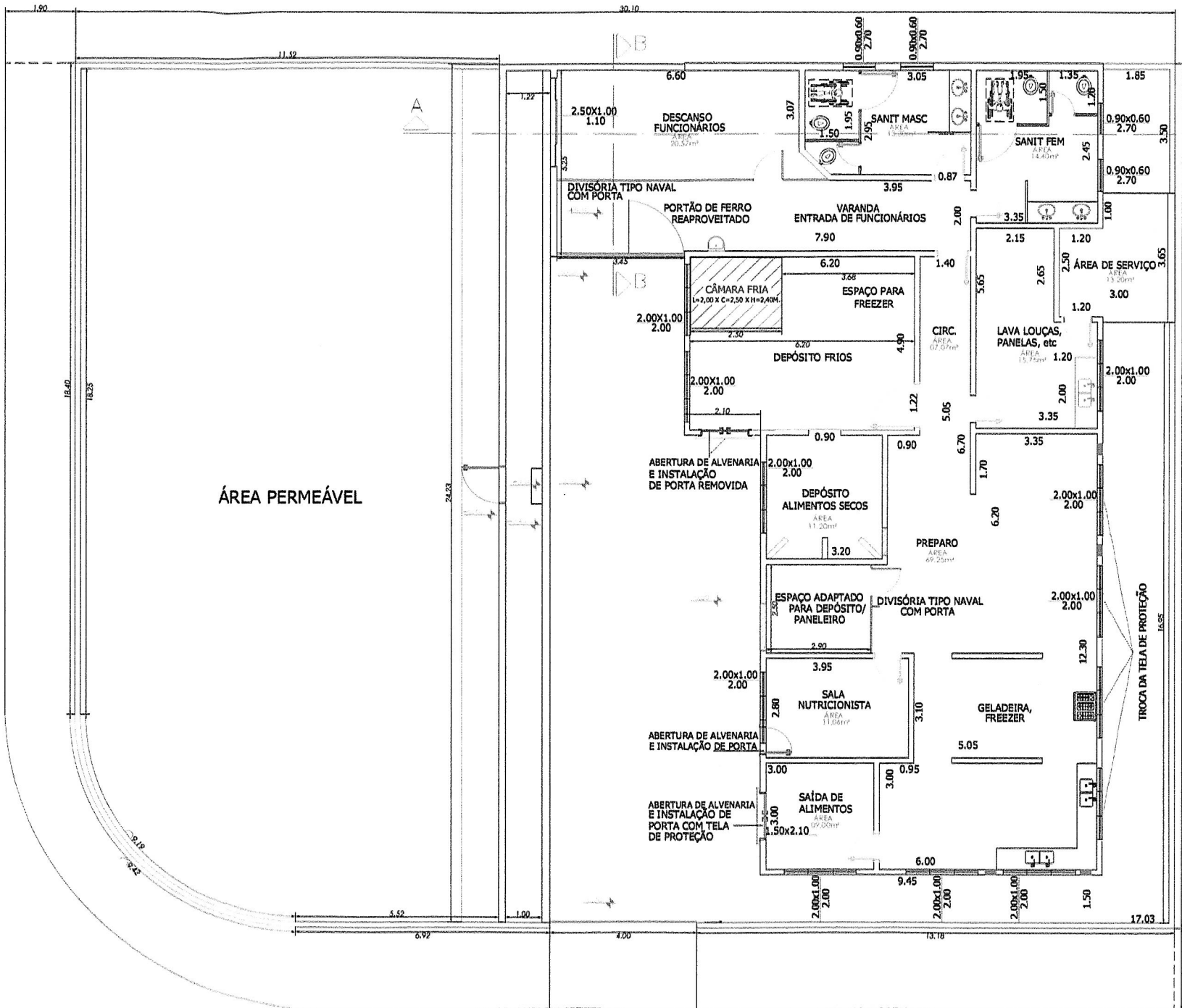
ART N° 2620251527104

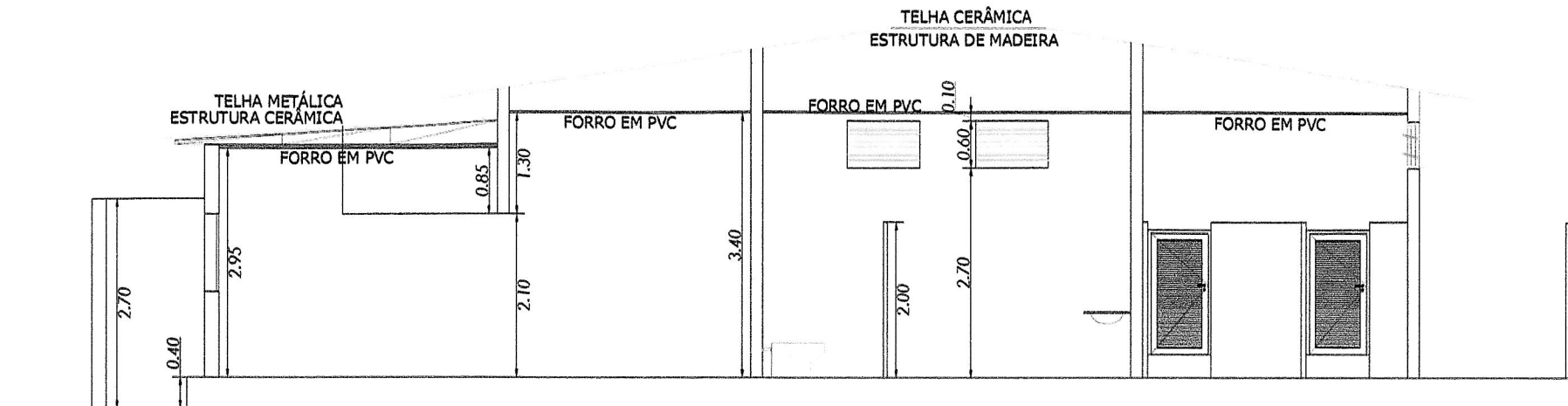
LOCALIZAÇÃO:



A handwritten signature in black ink, appearing to read "Anderson Carlos Mazzedo Mariando". The signature is written in a cursive, flowing style.

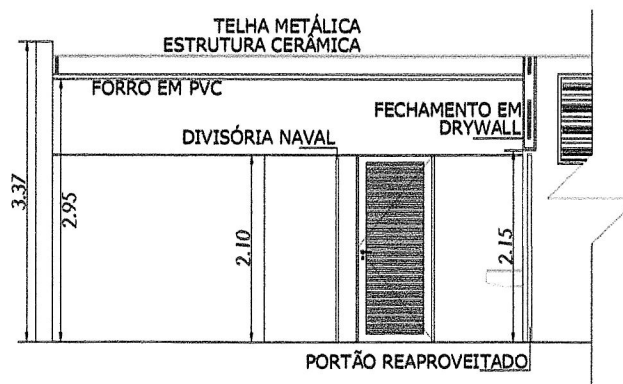
ANDERSON CARLOS MAZZEDO MARIANO  
ENGENHEIRO CIVIL MUNICIPAL  
CREA/SP N° 5064043737





CORTE AA




ESC = 1.100

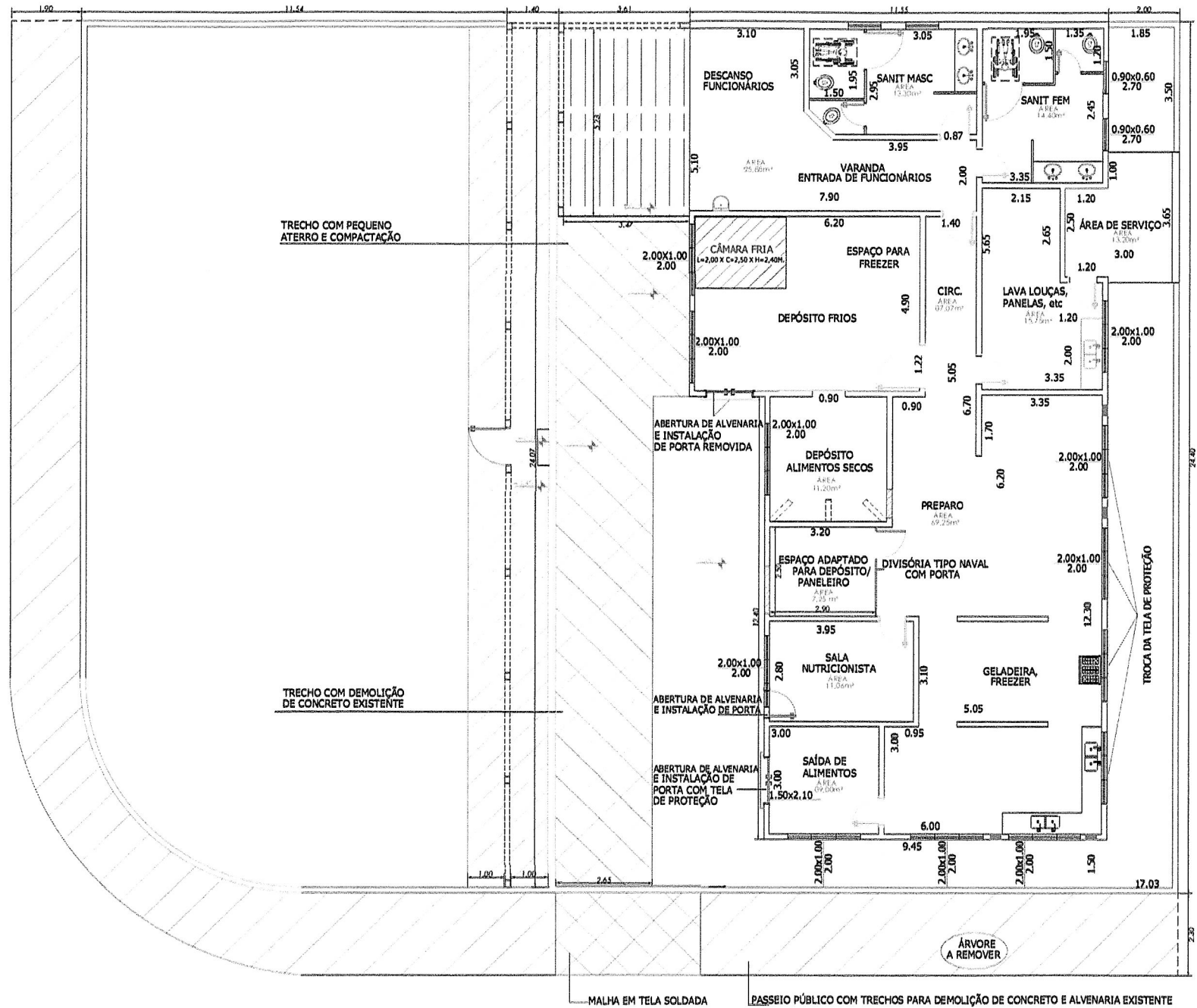


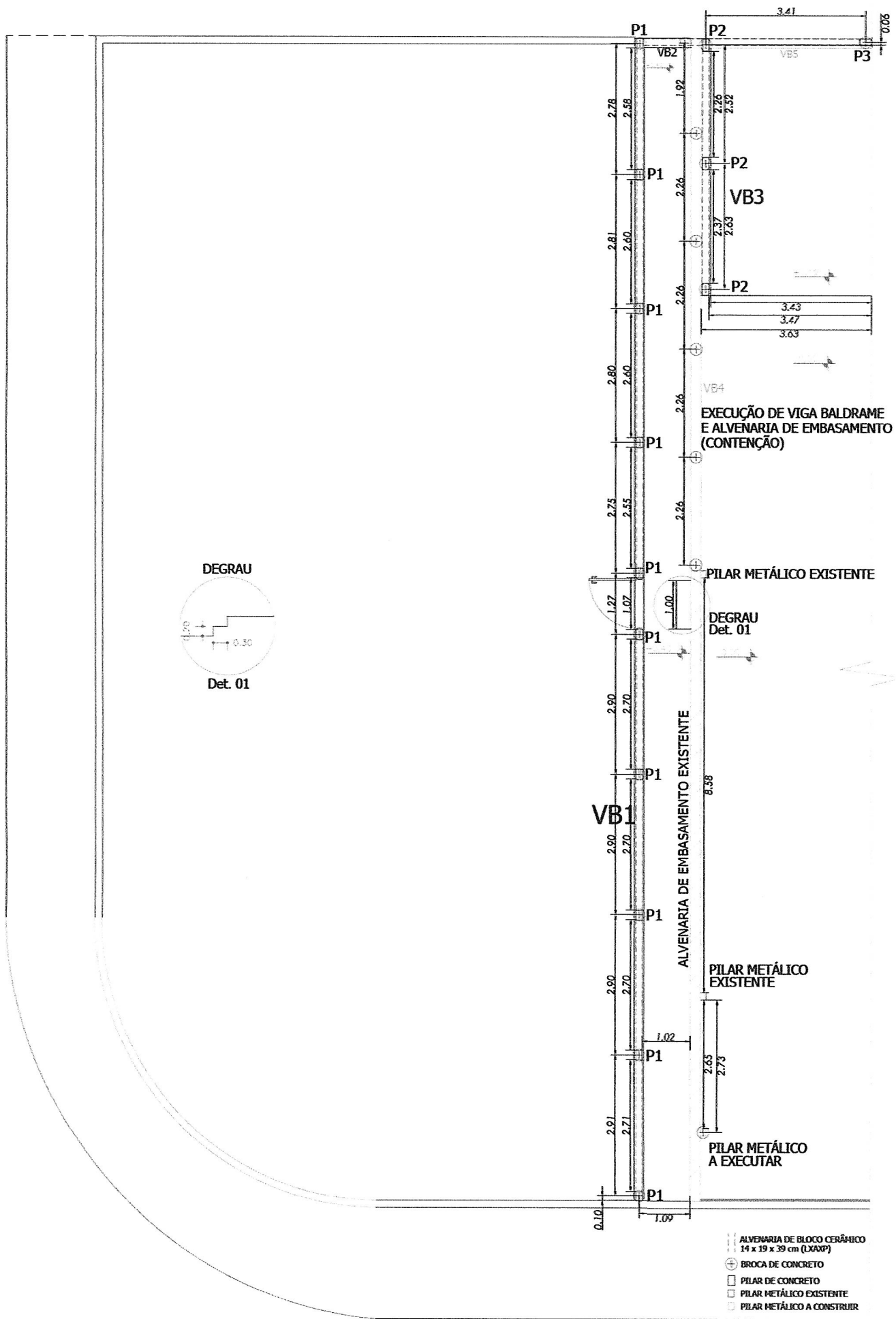
CORTE BB

ESC = 1.100



-  INSTALAÇÃO DE LAVATÓRIO COMPLETO (REAPROVEITANDO PEÇAS RETIRADAS)
-  RETIRADA DE PORTAS ANTIGAS E COLOCAÇÃO DE NOVAS EM ALUMÍNIO
-  RETIRADA DE PORTAS ANTIGAS, ABERTURA DE VÃOS, REQUADRAMENTO E INSTALAÇÃO DE PORTAS EM VIDRO TEMPERADO
-  INSTALAÇÃO DE EXAUSTOR 1.500 M3/H
-  INSTALAÇÃO DE PORTA/PORTÃO DE FERRO
-  EXECUÇÃO DE CONTRAPISO DE CONCRETO
-  ADIÇÃO DE TELA SOLDADA NO CONTRAPISO
-  EXECUÇÃO DE MURO / PAREDE COM ACABAMENTOS
-  INSTALAÇÃO DE PORTA COM TELA MOSQUITEIRA
-  EXECUÇÃO DE REVESTIMENTOS, RODAPÉS, REJUNTAMENTO.
-  EXECUÇÃO DE ACABAMENTOS EM MURO EXISTENTE
-  FECHAMENTO DE VÃOS COM ALVENARIA E ACABAMENTOS

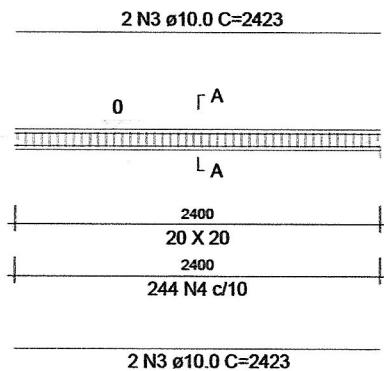




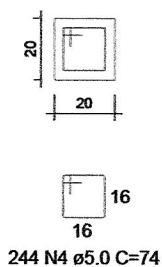
PLANTA DE INFRA E SUPERESTRUTURA  
SEM ESCALA

# VIGA BALDRAME

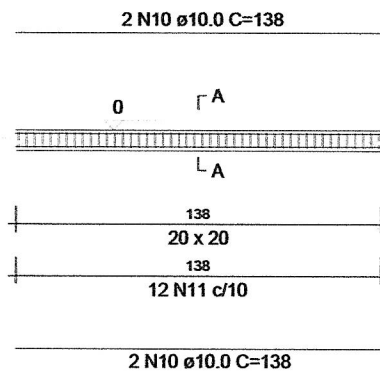
## VB1



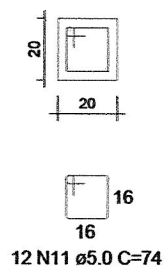
### SEÇÃO A-A



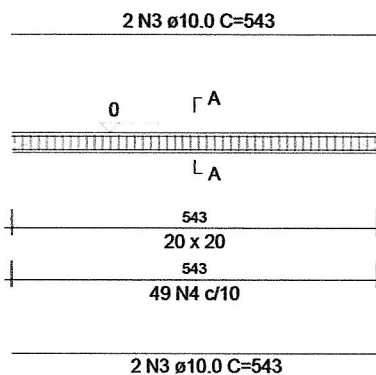
## VB2



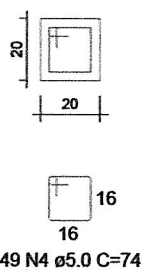
### SEÇÃO A-A



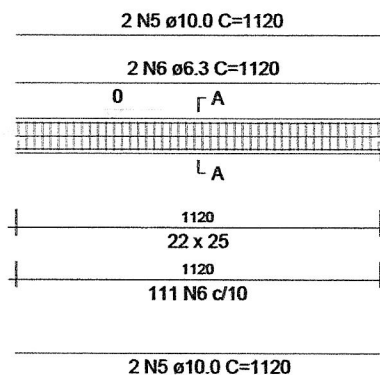
## VB3



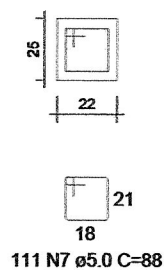
### SEÇÃO A-A



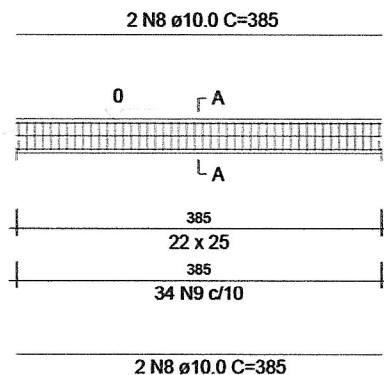
## VB4



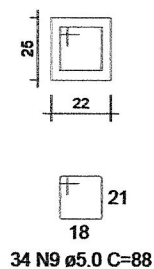
### SEÇÃO A-A



## VB5



### SEÇÃO A-A



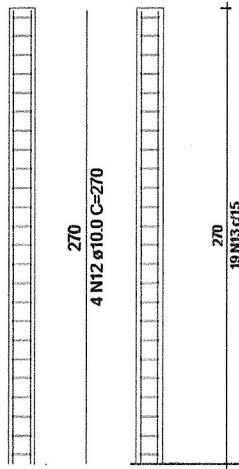
A

# PILARES

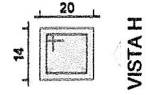
P1

VISTA H  
ESC 1:50

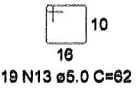
VISTA B  
ESC 1:50



SEÇÃO  
ESC 1:25



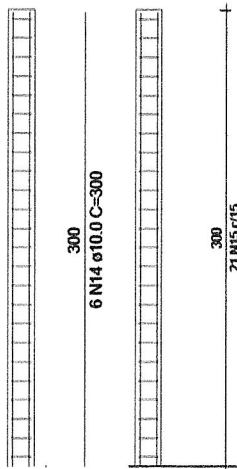
VISTA B



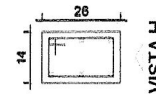
P2

VISTA H  
ESC 1:50

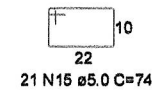
VISTA B  
ESC 1:50



SEÇÃO  
ESC 1:25



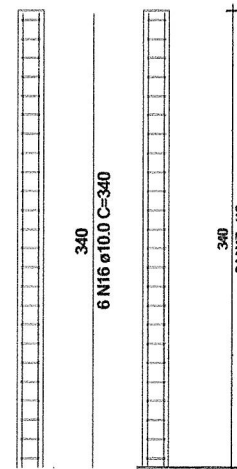
VISTA B



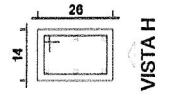
P3

VISTA H  
ESC 1:50

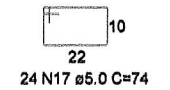
VISTA B  
ESC 1:50



SEÇÃO  
ESC 1:25

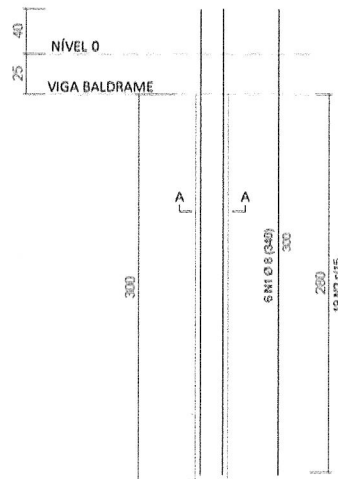


VISTA B



## ESTACAS (Brocas)

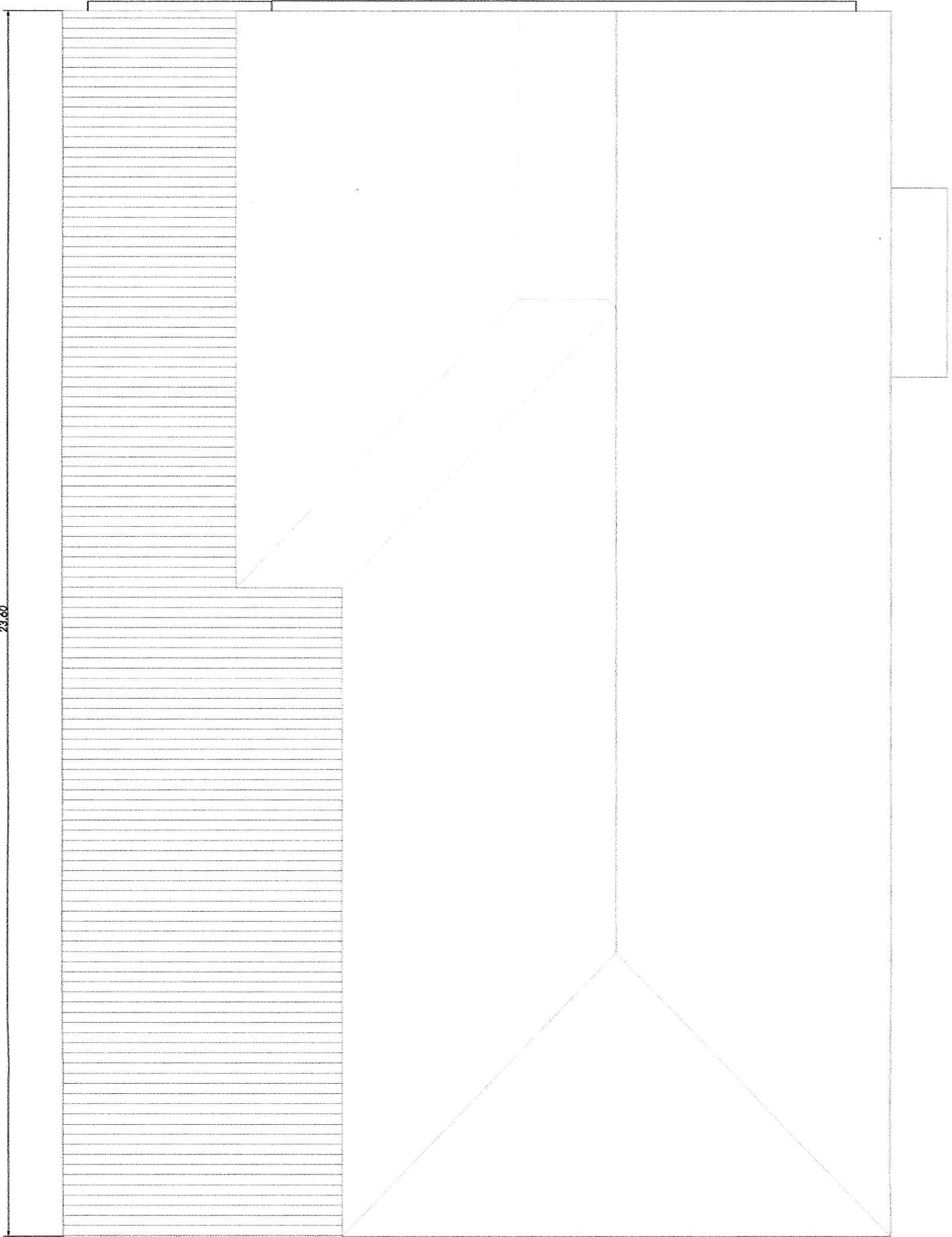
C = 300CM  
D = 25CM  
Sem Escala



SEÇÃO A-A  
Escala 1:50



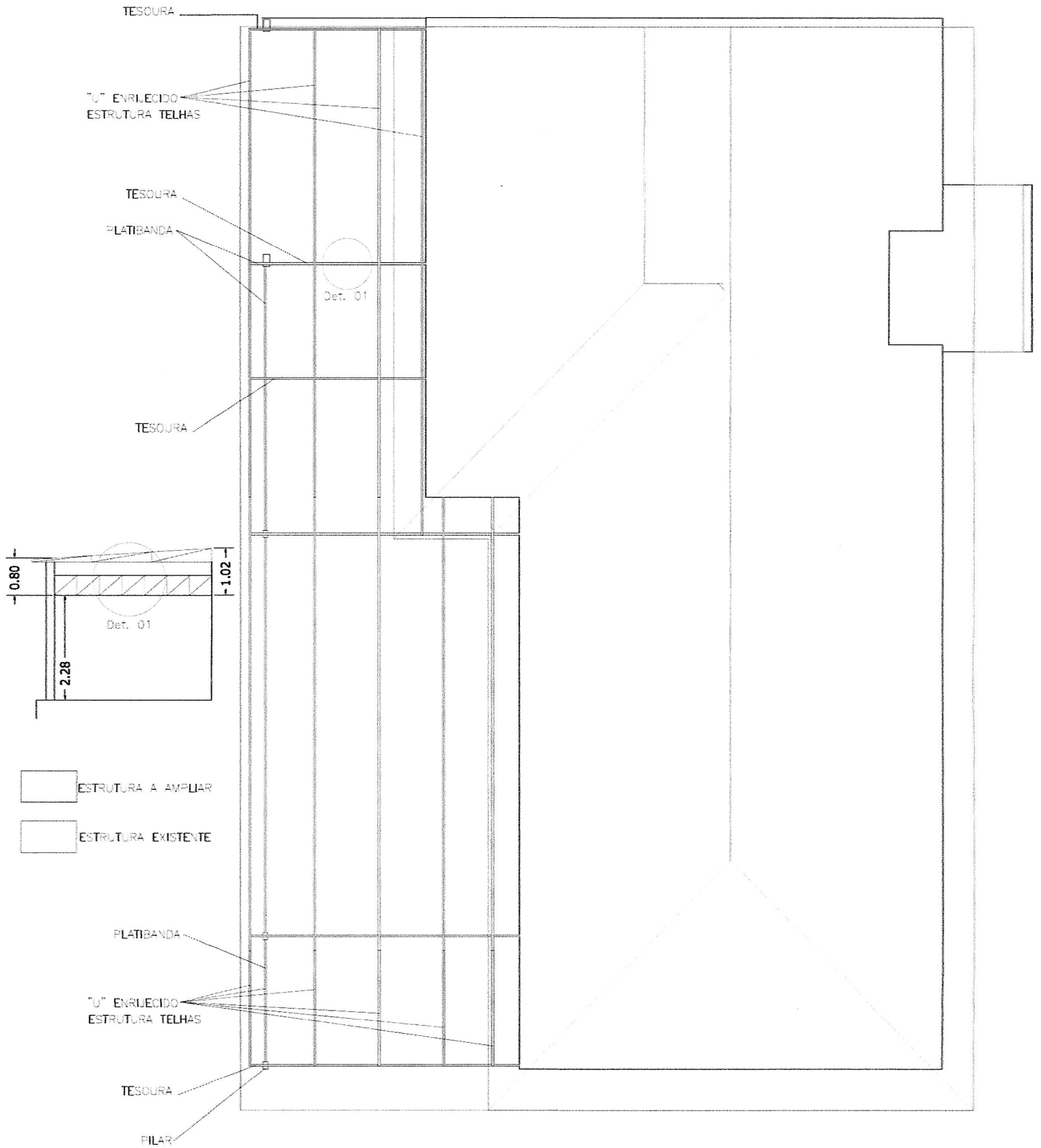
N2 Ø 5 (71)



PLANTA DE COBERTURA  
SEM ESCALA


FOLHA 7 DE 10




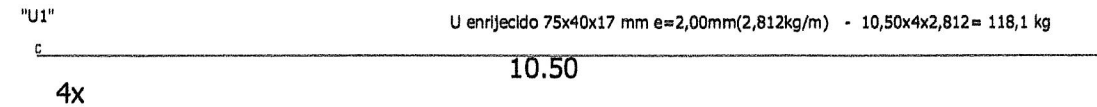


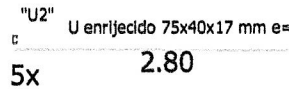
PLANTA COBERTURA — DETALHAMENTO COBERTURA EXTERNA  
SEM ESCALA

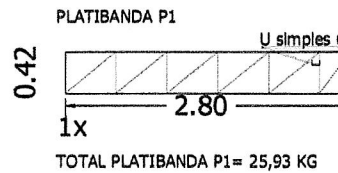
*A*

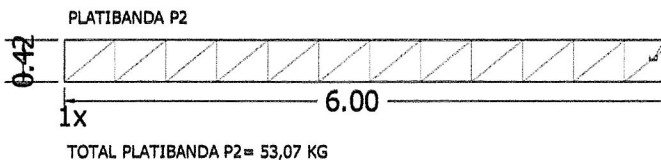
TESOURA 1 "T1"  U simples 68x30x2,00mm (1,883kg/m) - (4,407x3x1,883)=24,90 kg TOTAL TESOURA=82,77 KG  
 U simples 75x40x2,00mm(2,308kg/m) - 8,358x3x2,308 =57,87kg

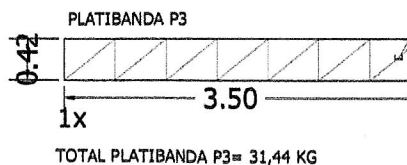
TESOURA 2 "T2"  U simples 68x30x2,00mm (1,883kg/m) - (6,877x1x1,883)=12,95kg TOTAL TESOURA= 41,95 KG  
 U simples 75x40x2,00mm(2,308kg/m) - 12,569x1x2,308 =29,00kg

"U1"  U enrijecido 75x40x17 mm e=2,00mm(2,812kg/m) - 10,50x4x2,812= 118,1 kg TOTAL U ENRIJECIDO "U1"= 118,1 KG

"U2"  U enrijecido 75x40x17 mm e=2,00mm(2,812kg/m) - 2,8x5x2,812= 39,37kg TOTAL U ENRIJECIDO "U2"= 39,37 KG

PLATIBANDA P1  U simples 68x30x2,00mm (1,883kg/m) - (5,88x1,883)=11,07 kg  
 U simples 75x40x2,00mm(2,308kg/m) - 6,44x2,308 =14,86kg  
 TOTAL PLATIBANDA P1= 25,93 KG

PLATIBANDA P2  U simples 68x30x2,00mm (1,883kg/m) - (12,45x1,883)=23,44 kg  
 U simples 75x40x2,00mm(2,308kg/m) - 12,84x2,308 =29,63kg  
 TOTAL PLATIBANDA P2= 53,07 KG

PLATIBANDA P3  U simples 68x30x2,00mm (1,883kg/m) - (7,09x1,883)=13,35 kg  
 U simples 75x40x2,00mm(2,308kg/m) - 7,84x2,308 =18,09kg  
 TOTAL PLATIBANDA P3= 31,44 KG

DETALHES COBERTURA  
 SEM ESCALA



PILARES "U" ENRIJECIDO 20X60X150MM 5,23 KG/M

1x (2X4,5MX5,23KG/M)= 47,07 KG

TELHA TRAPEZOIDAL TP40  
COBERTURA

11 PEÇAS DE 4,5 MTS

3 PEÇAS DE 6,5 MTS

TOTAL TELHA COBERTURA= 69,00 M<sup>2</sup>

FECHAMENTOS

PLATIBANDA- h 0,80 M x (2,80+6,00)= 7,04 M<sup>2</sup>

TRAPÉZIO ACIMA PORTÃO- ((085+1,05)/2)x3,5= 3,33 m<sup>2</sup>

TOTAL TELHA FECHAMENTOS= 10,37 M<sup>2</sup>

RESUMO MATERIAL

PERFIL METÁLICO

"T1"- 82,77KG

"T2"- 41,95KG

"U1"- 118,1 KG

"U2"- 39,37KG

"P1"- 25,93KG

"P2"- 53,07KG

"P3"- 31,44KG

PILAR- 47,07KG

TOTAL PERFIL METÁLICO 439,7 KG

TELHAS TRAPEZOIDAL TP40

COBERTURA =69,00M<sup>2</sup>

FECHAMENTOS = 10,37M<sup>2</sup>

TOTAL 79,37 M<sup>2</sup>

DETALHES COBERTURA  
SEM ESCALA

FOLHA 10 DE 10