



Igreja Nossa Senhora Aparecida - Joerana B

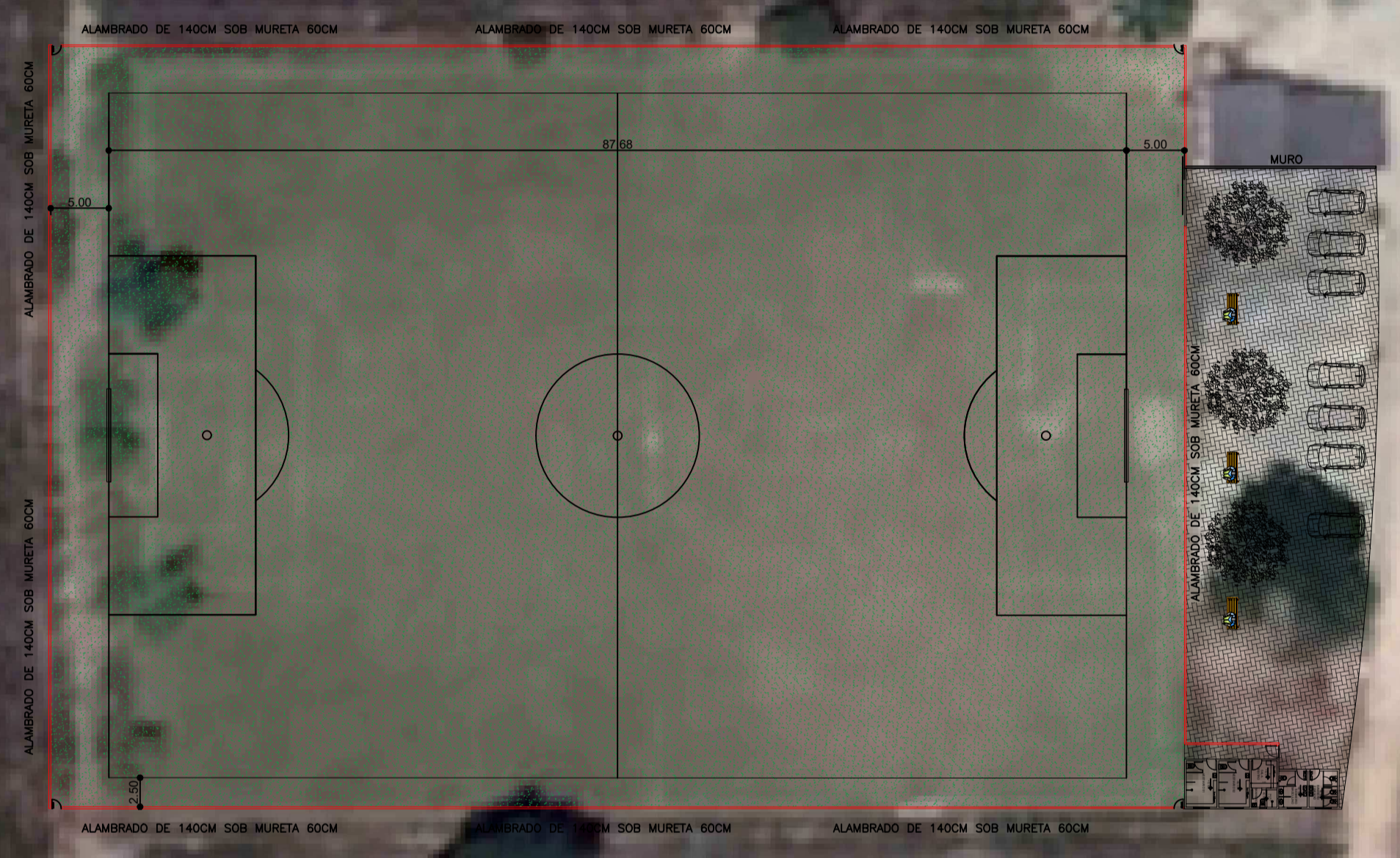
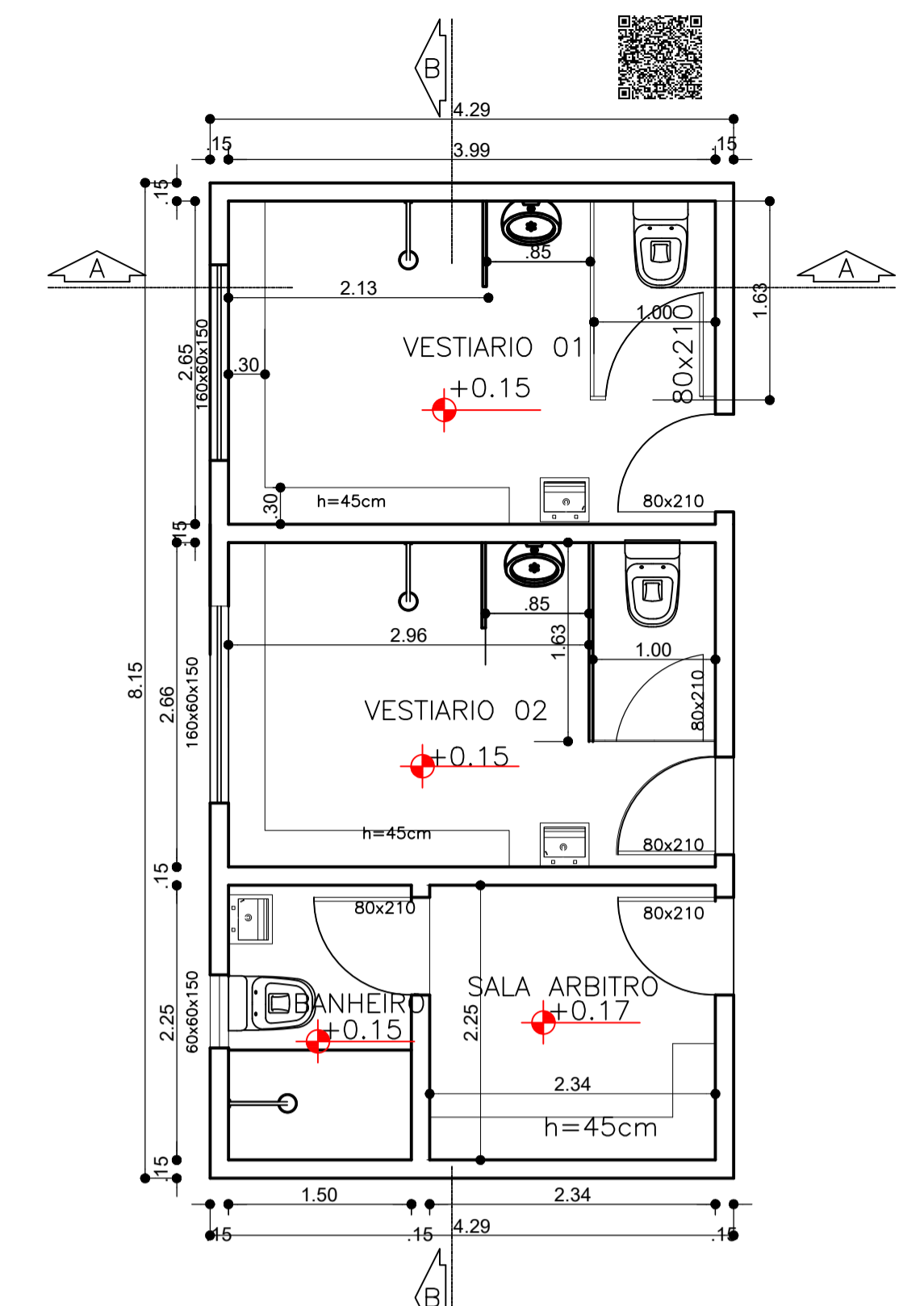
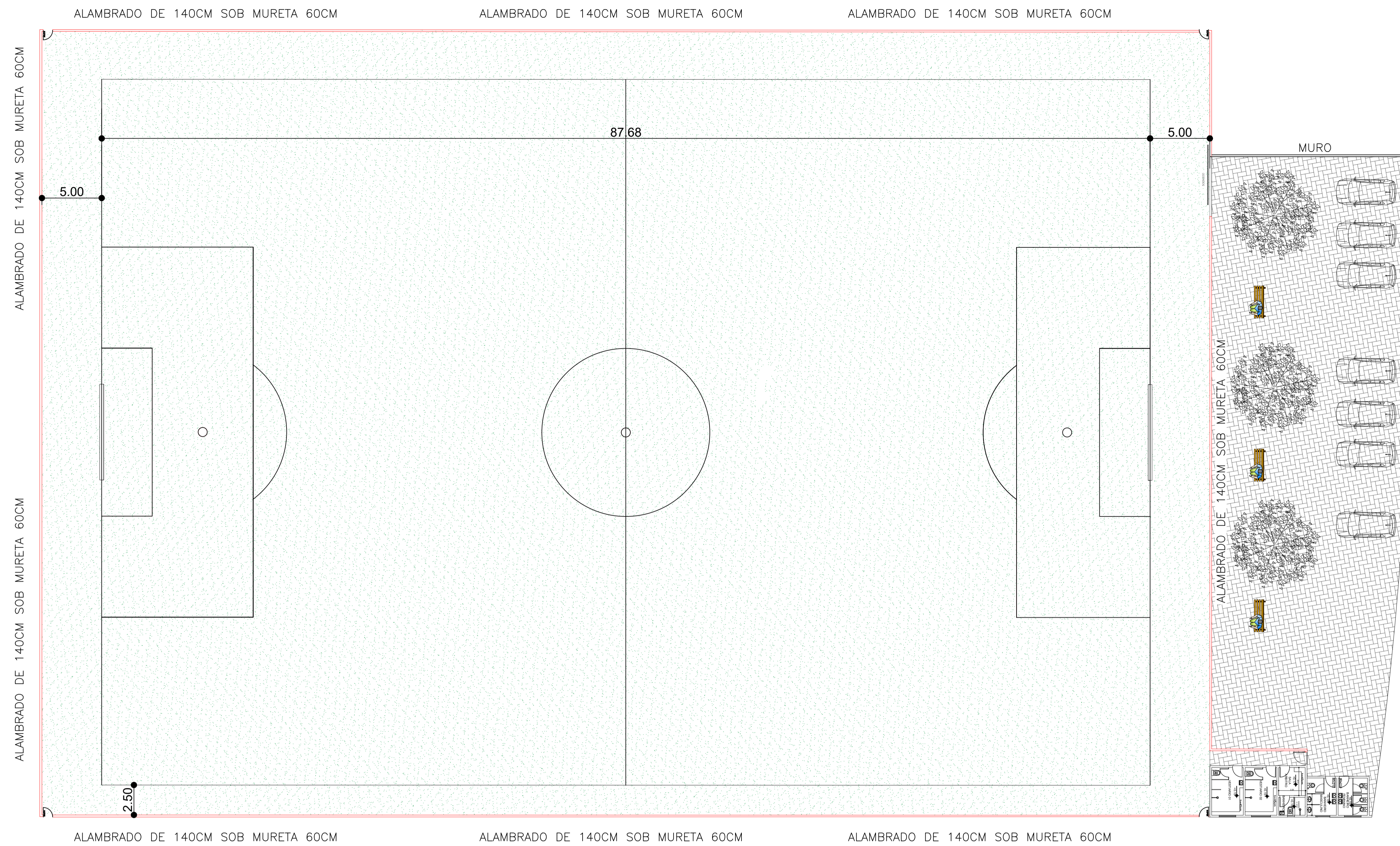
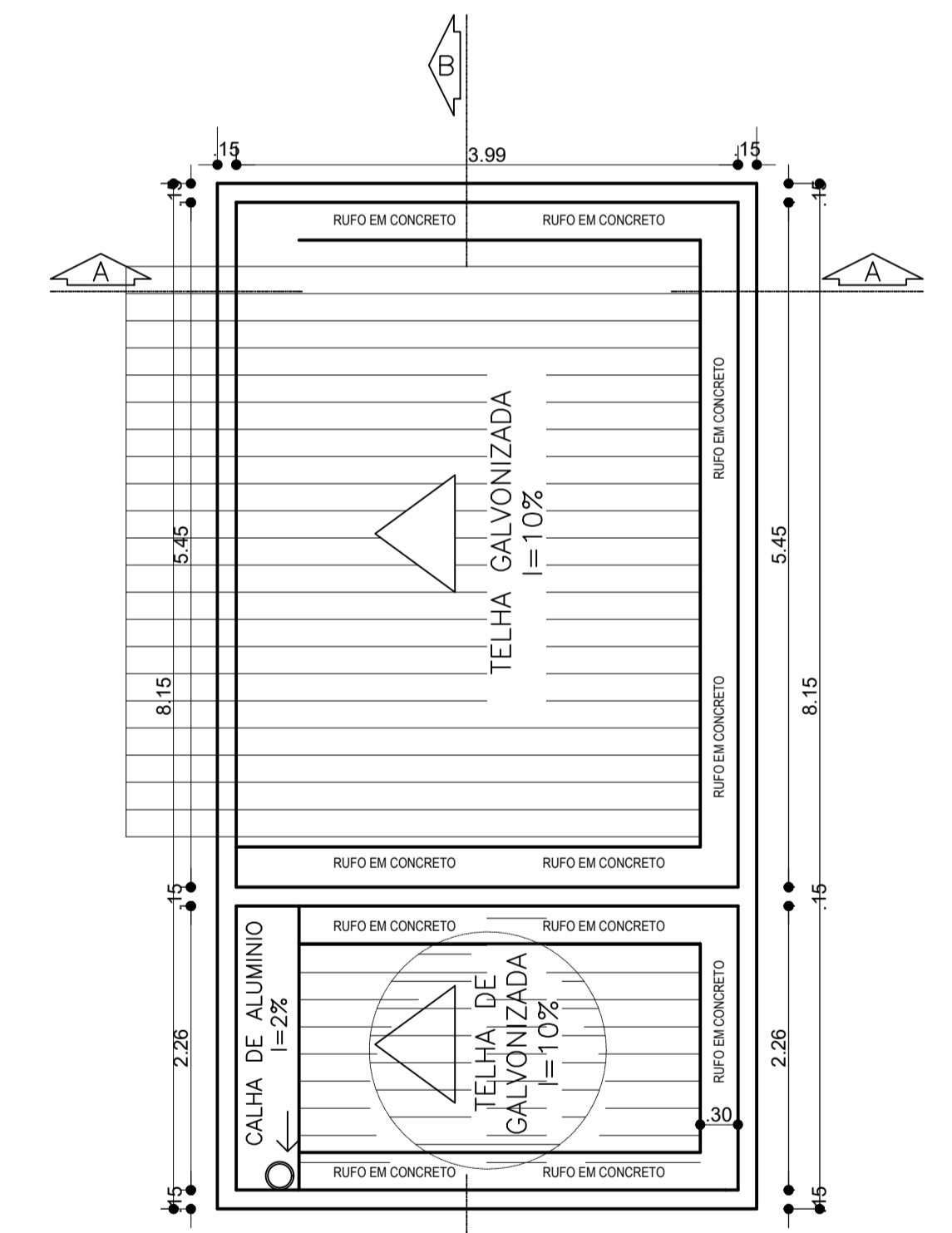


Image © 2023 Maxar Technologies

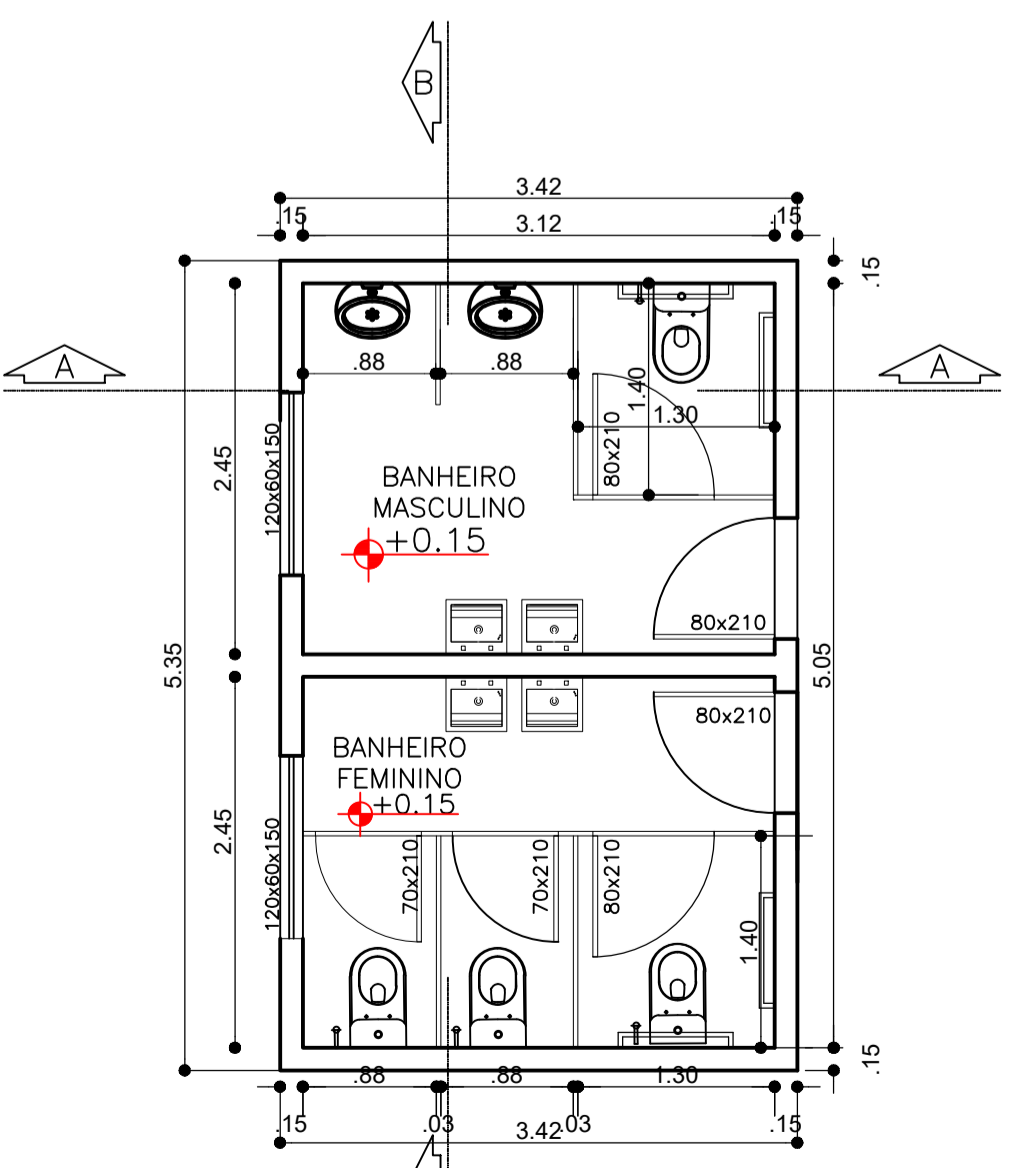
PREFEITURA MUNICIPAL DE SOORETAMA	
JUERANA B	
ENDEREÇO:	JUERANA B - SOORETAMA - ES
RESPONSÁVEL TÉCNICO:	JISLANIA BOBBIO
DESENHO:	JISLANIA BOBBIO
PRANCHA:	01/03
DATA:	JANEIRO/2023
OBS:	



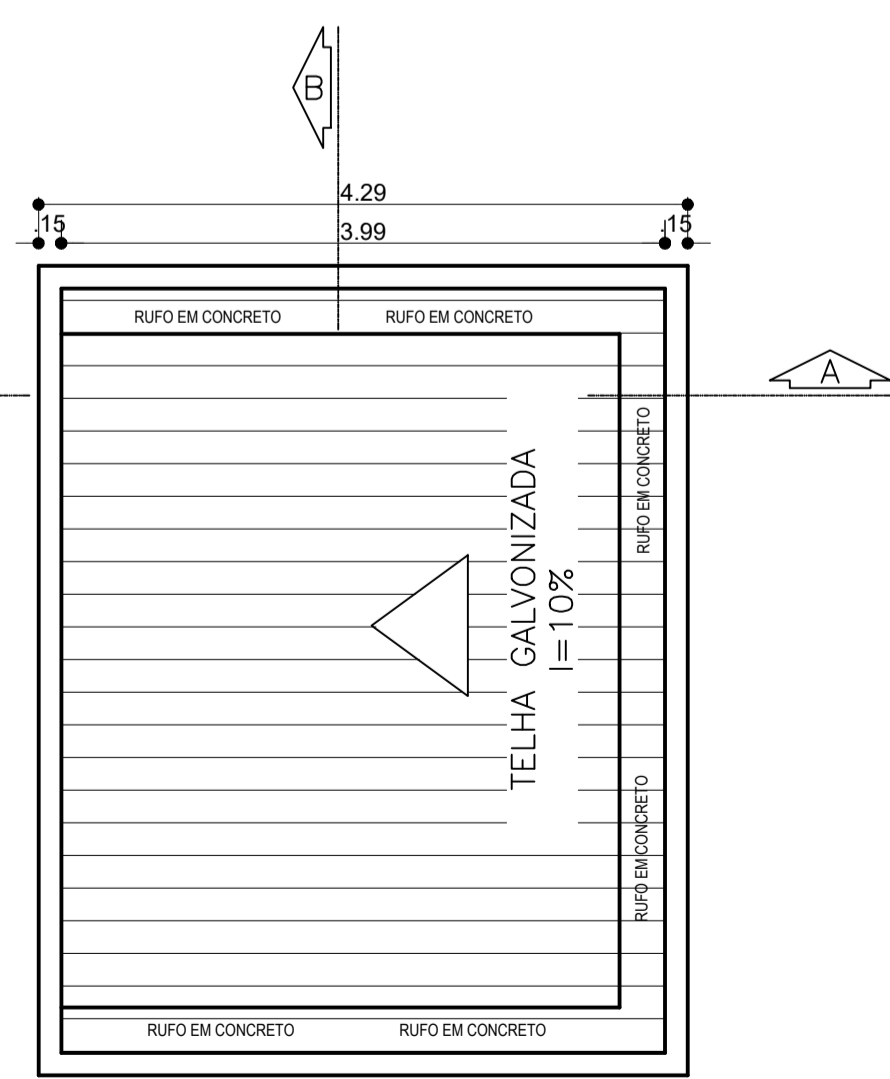
PLANTA BAIXA VESTIARIO
esc 1:50



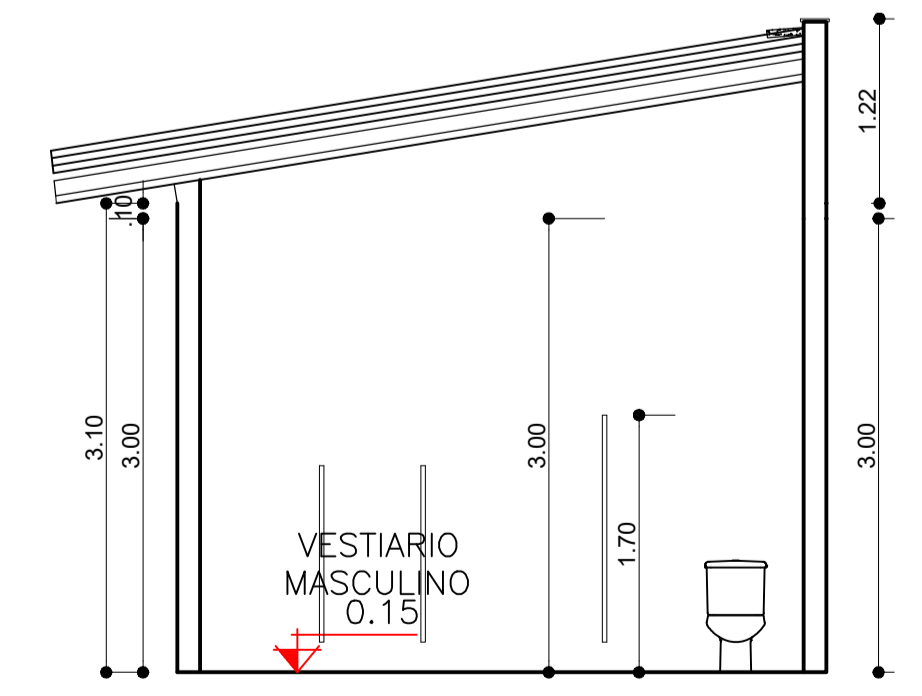
PLANTA DE COBERTURA VESTIARIO
esc 1:50



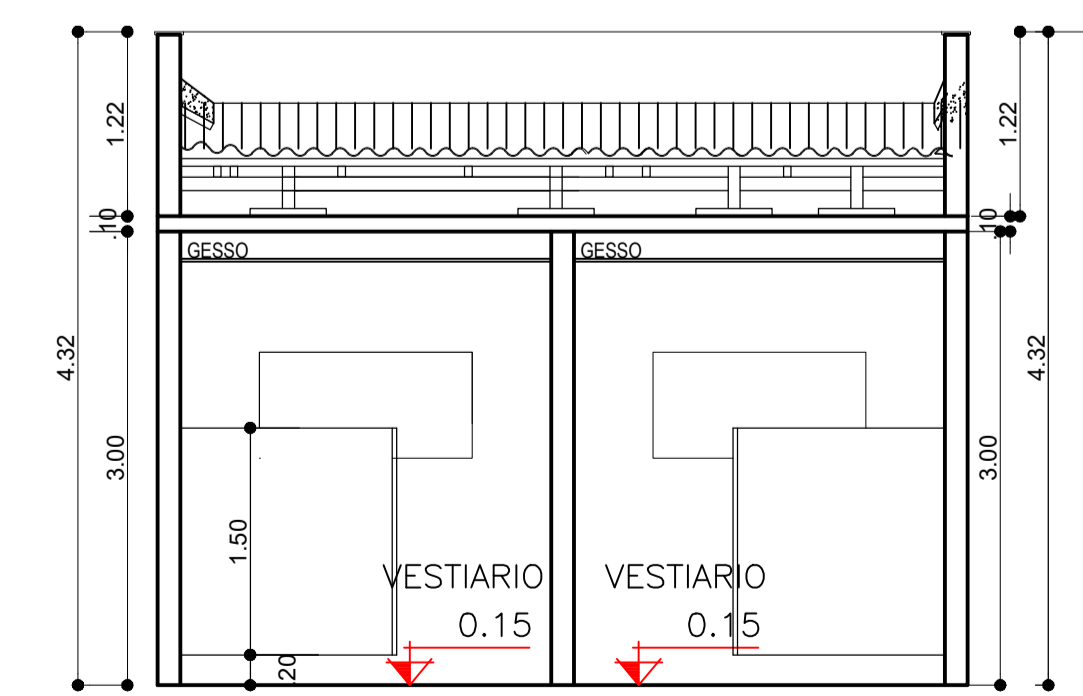
PLANTA BAIXA BANHEIROS
esc 1:50



PLANTA DE COBERTURA - BANHEIRO
esc 1:50

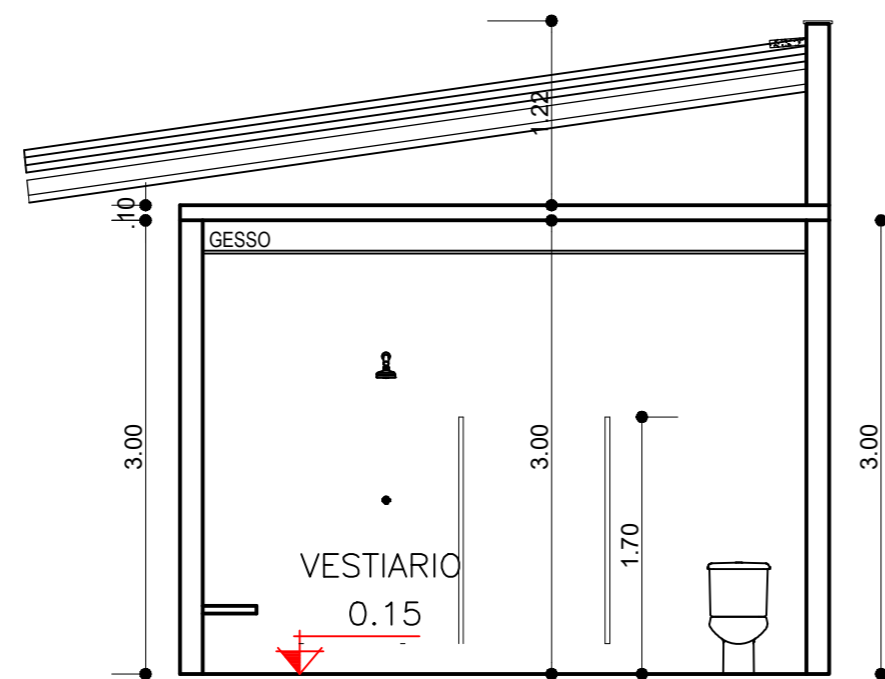


CORTE AA - BANHEIRO
esc 1:50

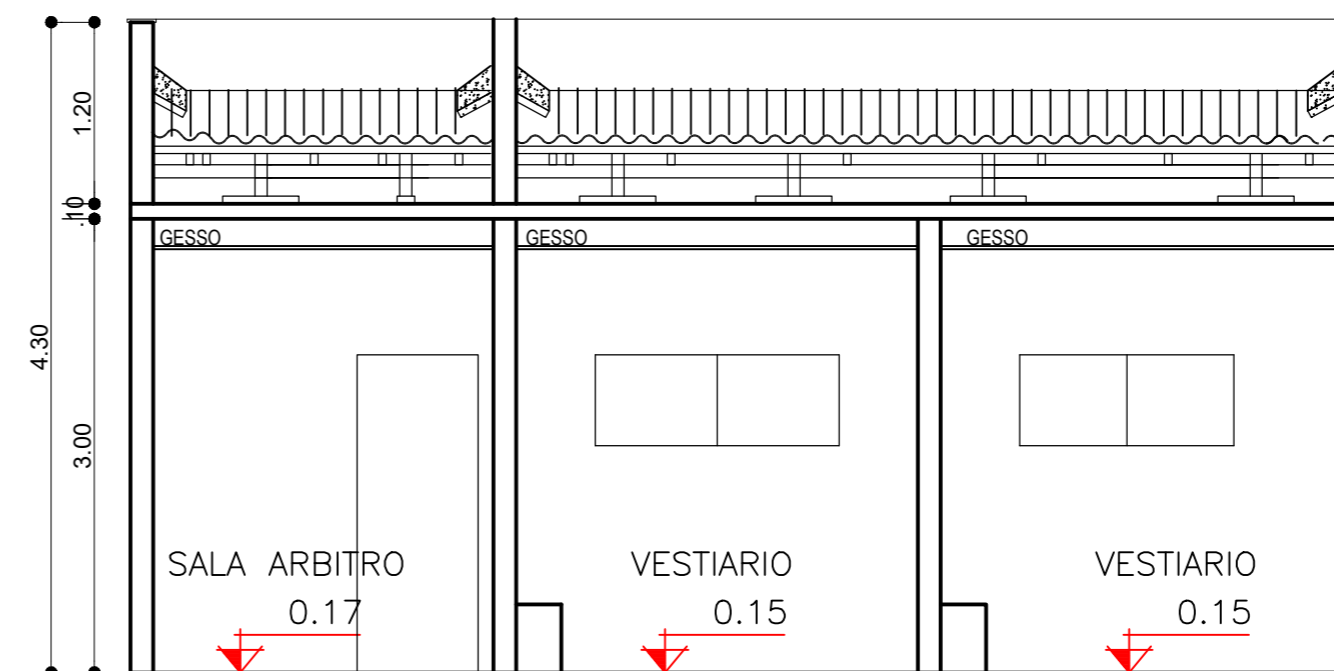


CORTE BB - BANHEIROS
esc 1:50

PREFEITURA MUNICIPAL DE SOORETAMA		
JUERANA B		
ENDEREÇO:	JUERANA B - SOORETAMA - ES	PRANCHA:
	RESPONSÁVEL TÉCNICO:	02/03
	JISLANIA BOBBIO	DATA:
	DESENHO:	JANEIRO/2023
	JISLANIA BOBBIO	OBS:

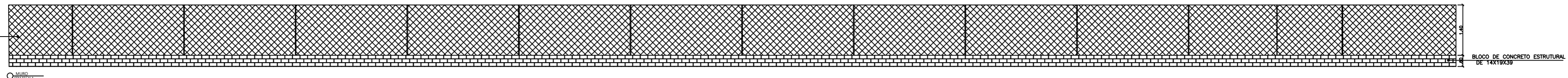


CORTE AA - VESTIARIO
esc 1:50



CORTE BB - VESTIARIO
esc 1:50

ALAMBRADO C/ TELA LOSANGULAR DE ARAME FIO 12 MALHA 2" REVEST. EM PVC COM TUBO DE FERRO GALVANIZADO VERTICAL DE 2" E HORIZONTAL DE 2" INCL. PORTÃO, PINTADOS COM ESMALTE SOBRE FUNDO ANTICORROSIVO



Assinado por JISLANIA BOBBIO 159 **** **
PREFEITURA MUNICIPAL DE SOORETAMA
25/03/2024 13:58:52

	PREFEITURA MUNICIPAL DE SOORETAMA	
	JUERANA B - CHUMBADO	
	ENDEREÇO: JUERANA B - SOORETAMA -ES	PRANCHA: 03/03
	RESPONSÁVEL TÉCNICO: JISLANIA BOBBIO	DATA: JANEIRO/2023
	DESENHO: JISLANIA BOBBIO	OBS: