

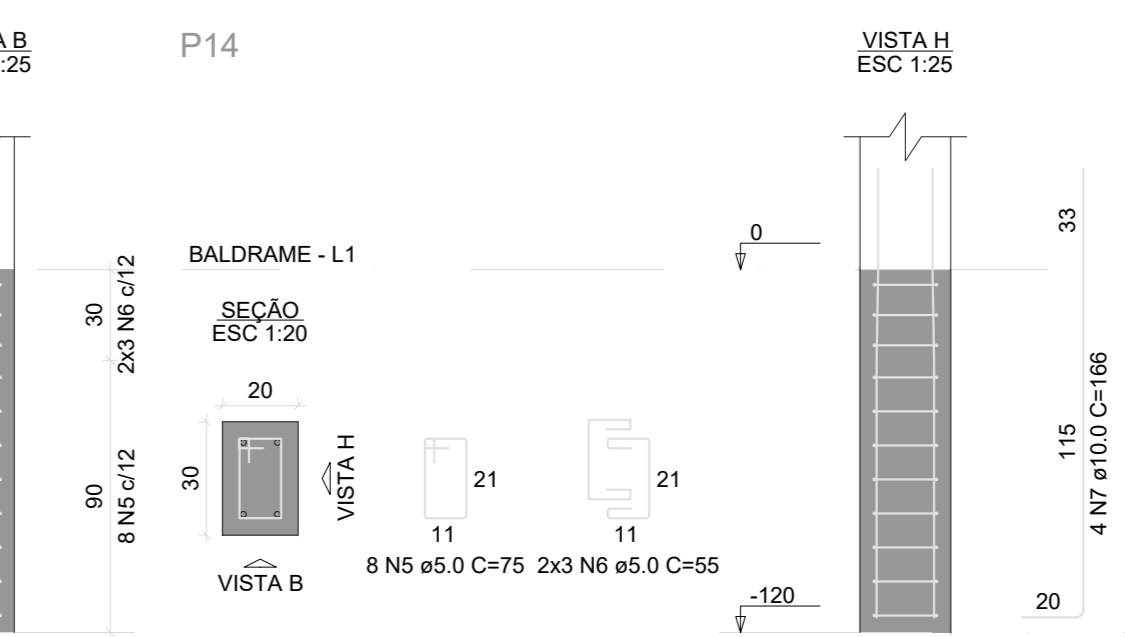
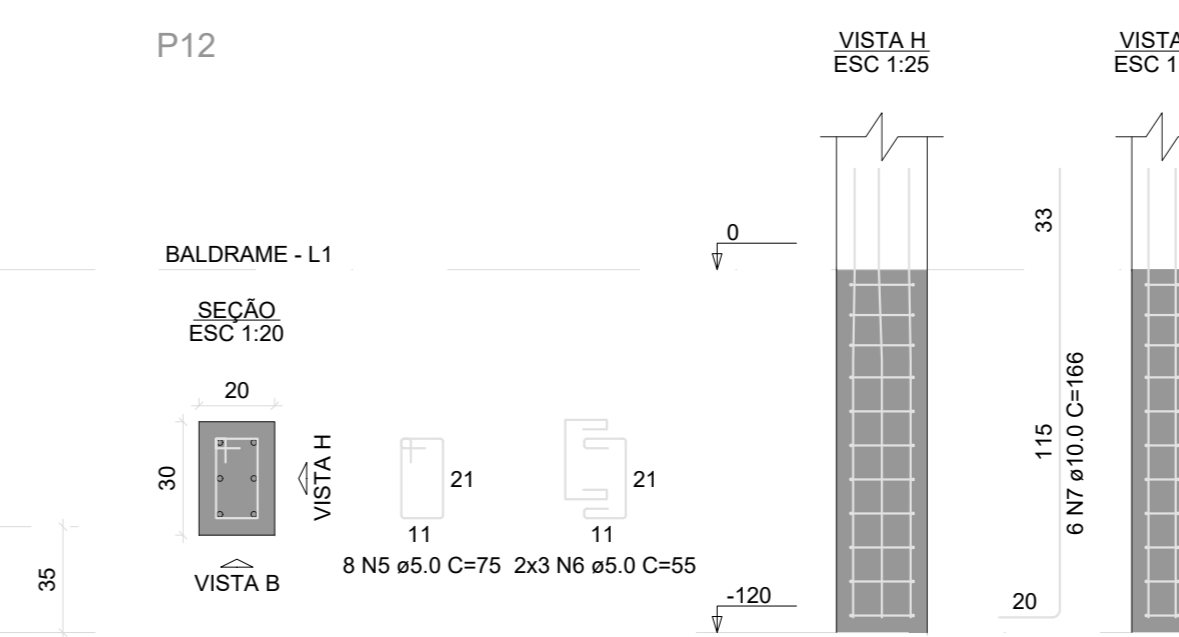
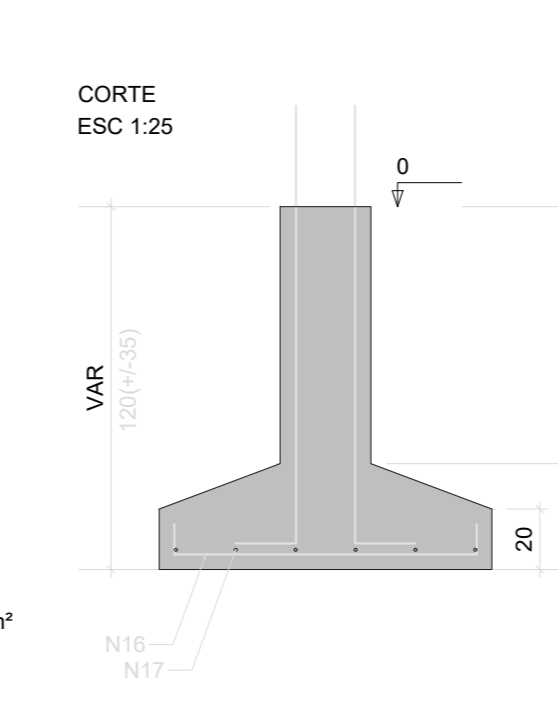
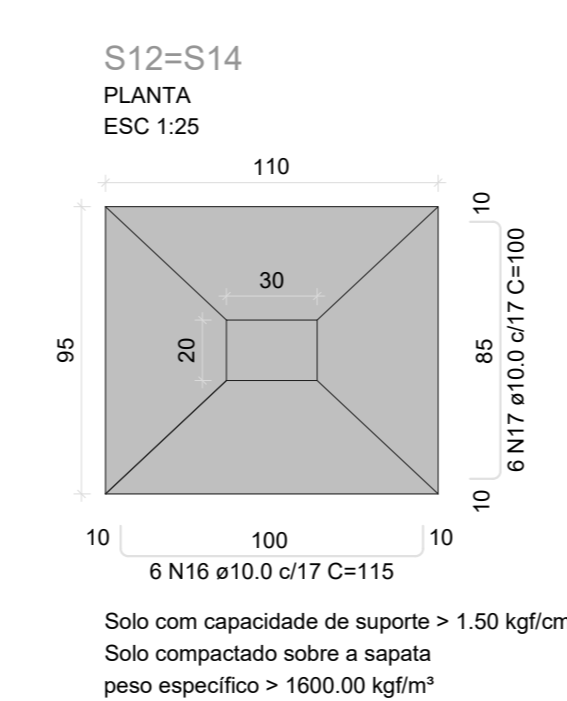
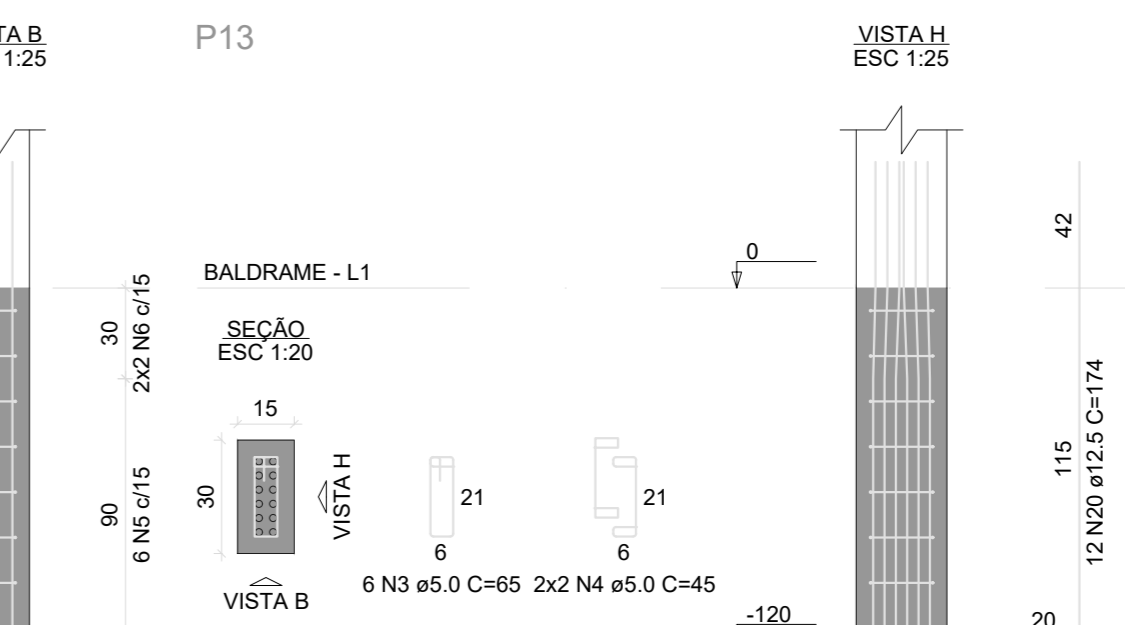
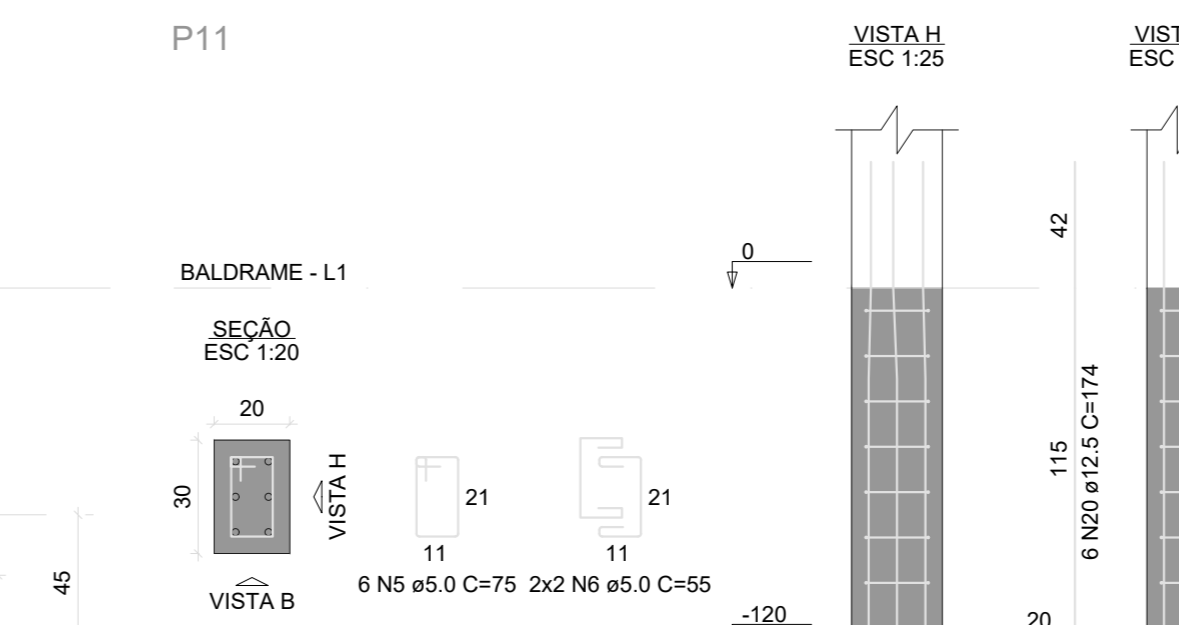
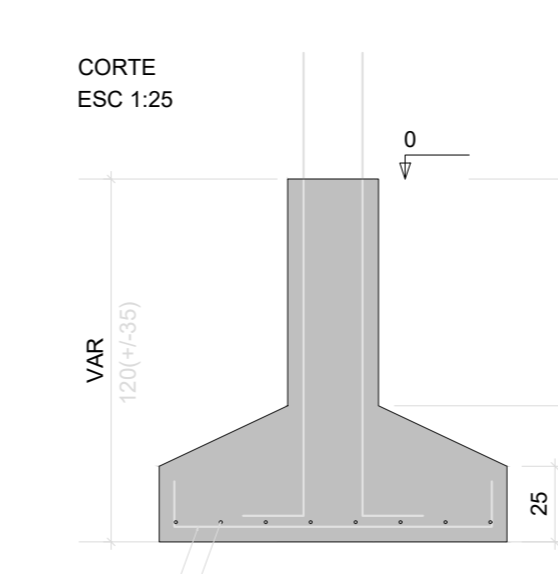
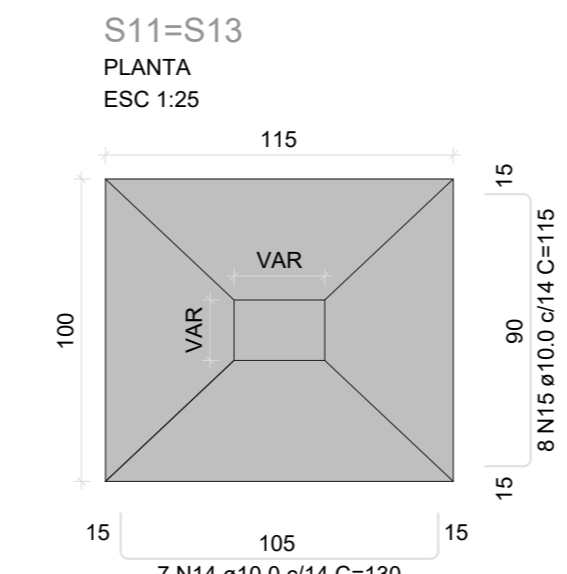
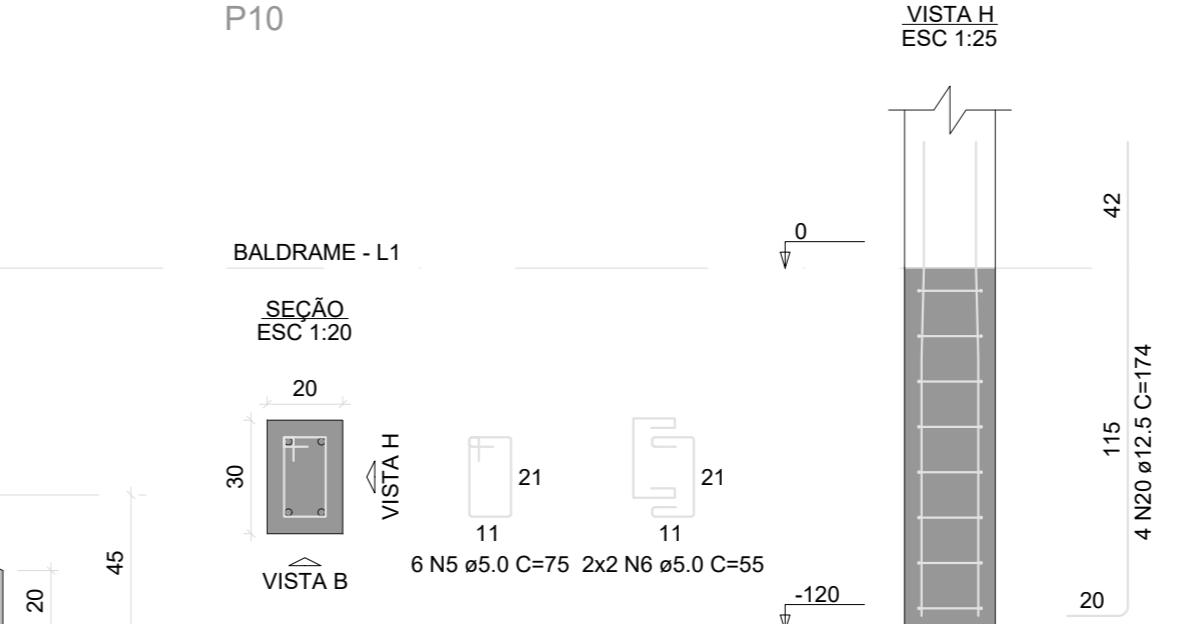
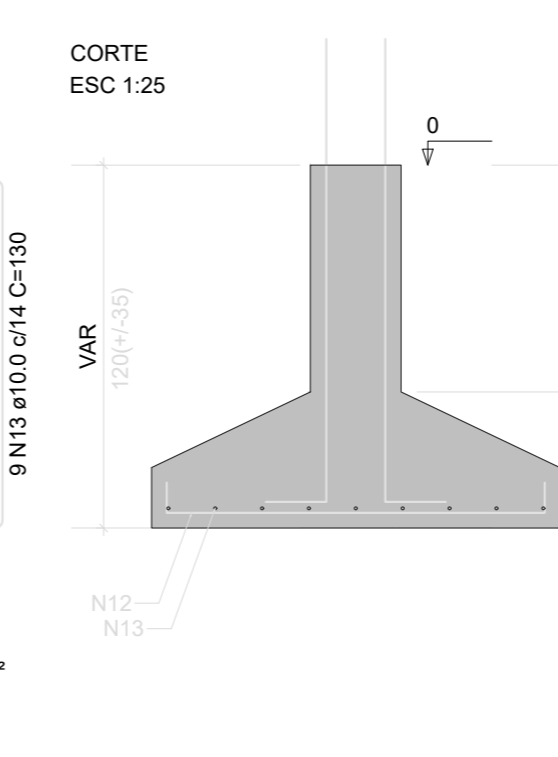
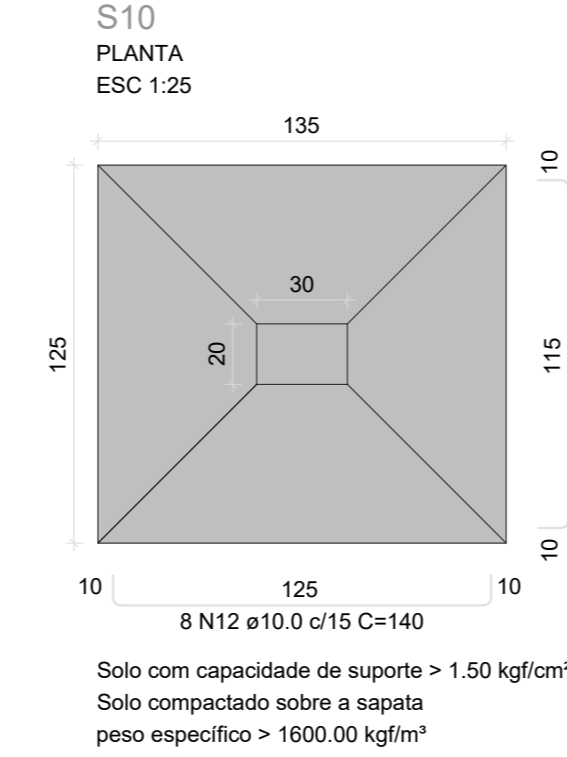
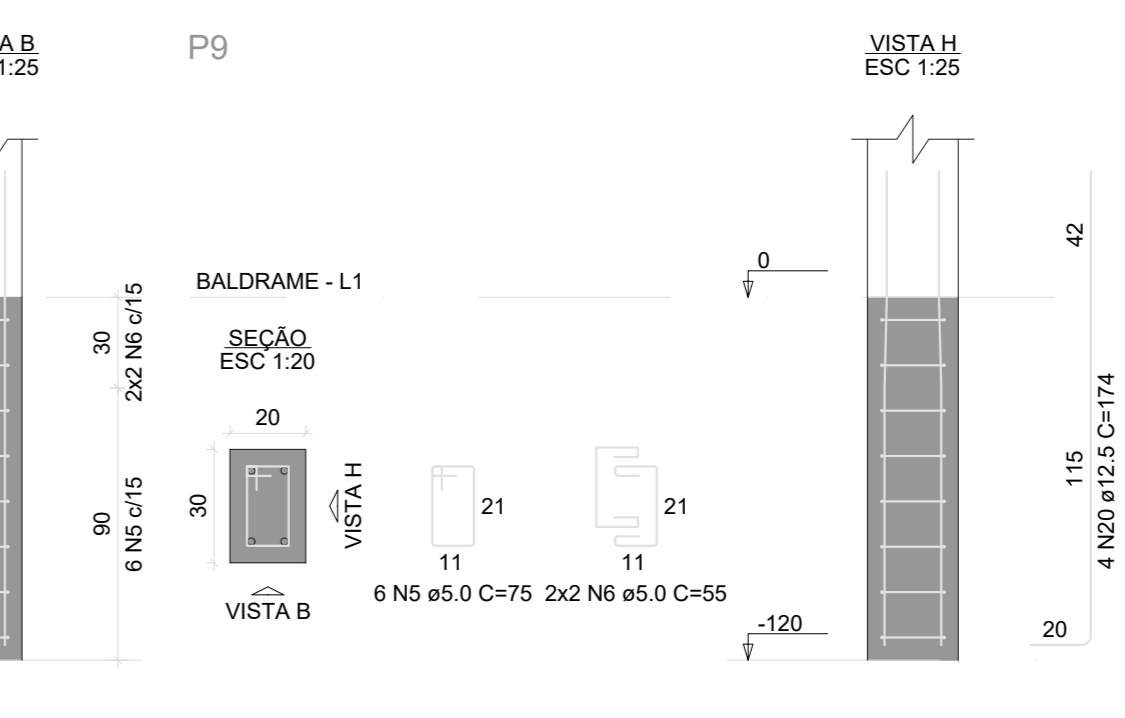
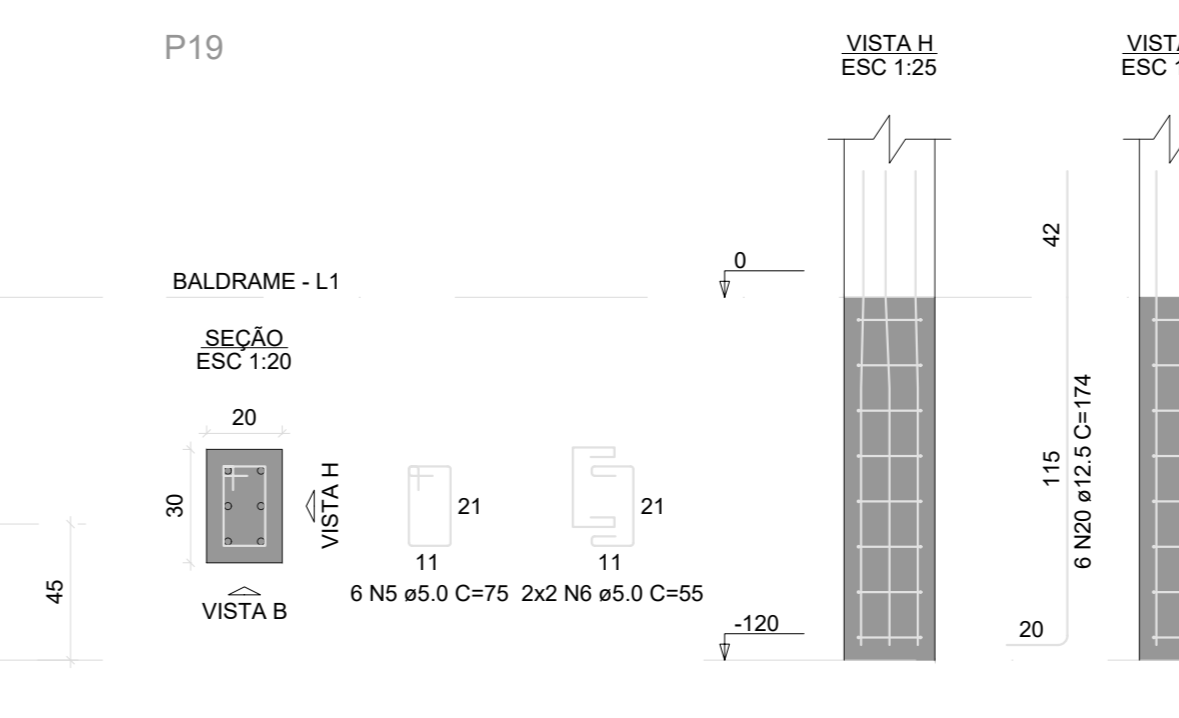
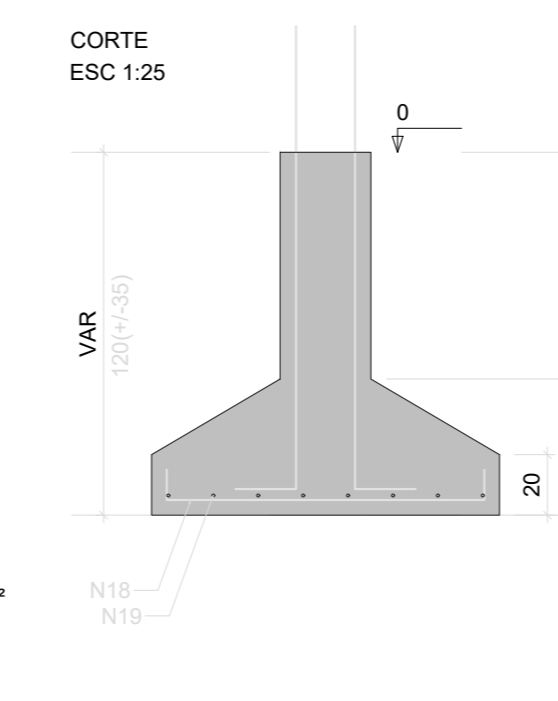
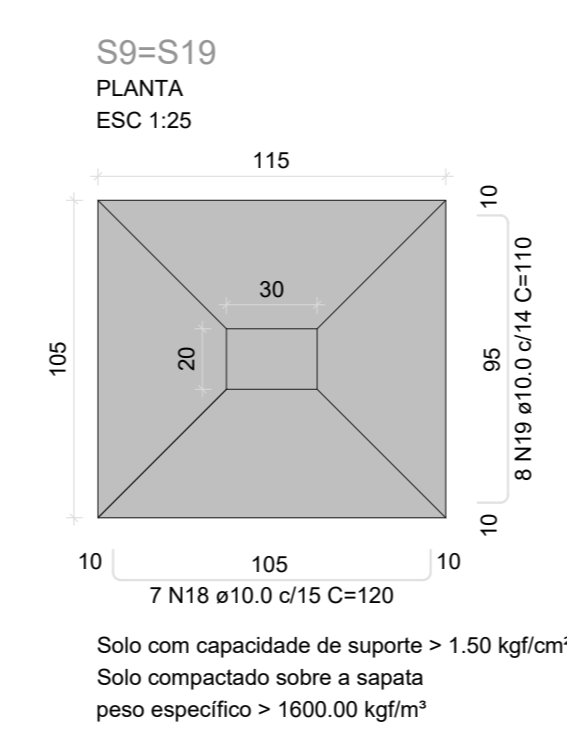
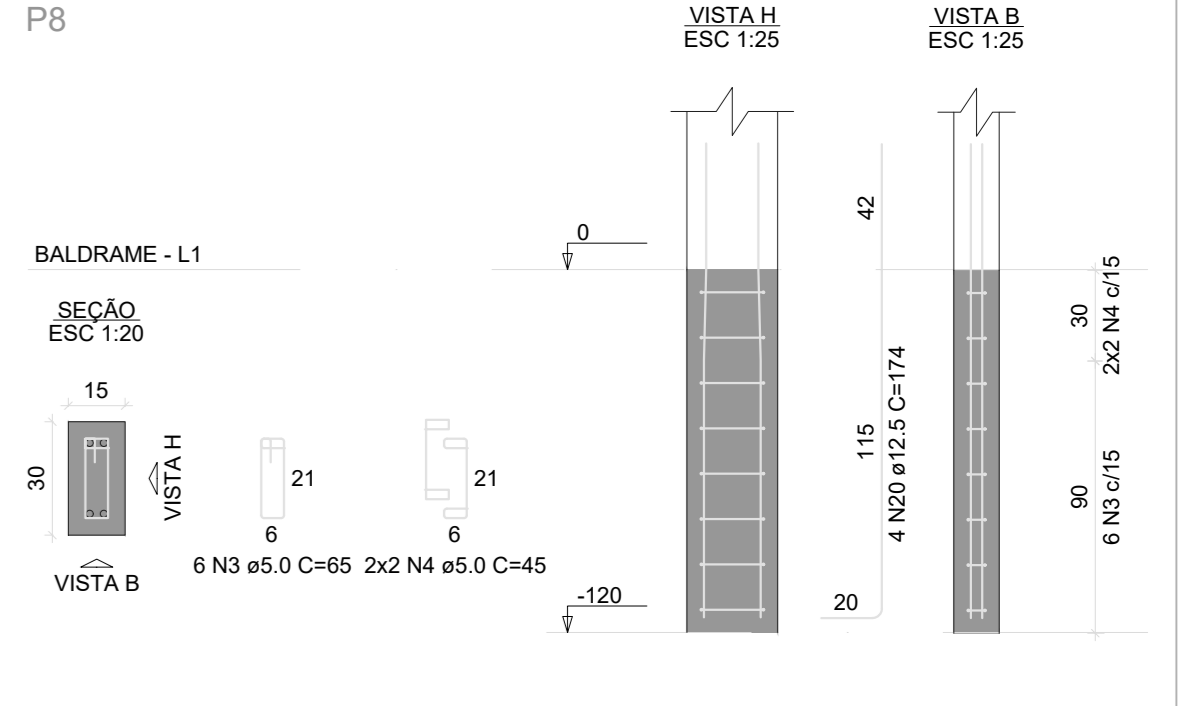
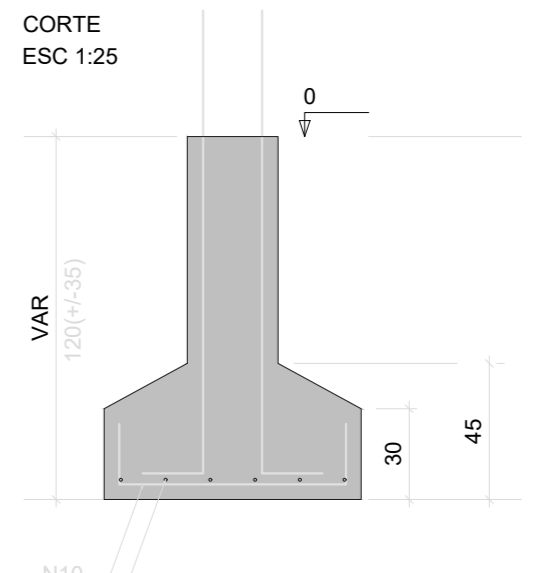
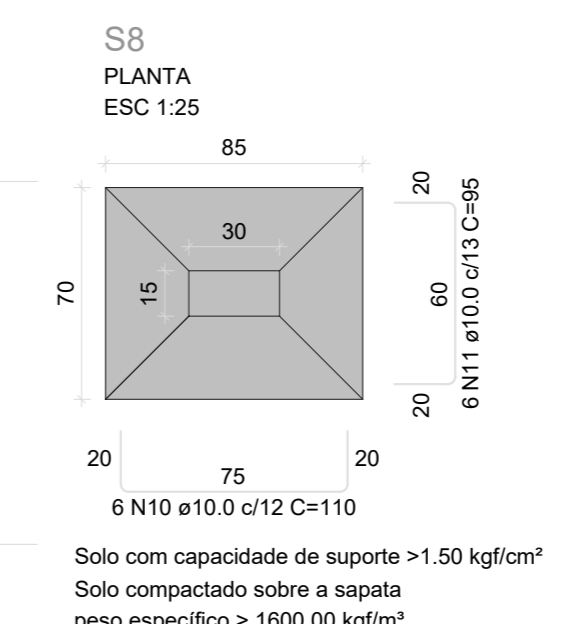
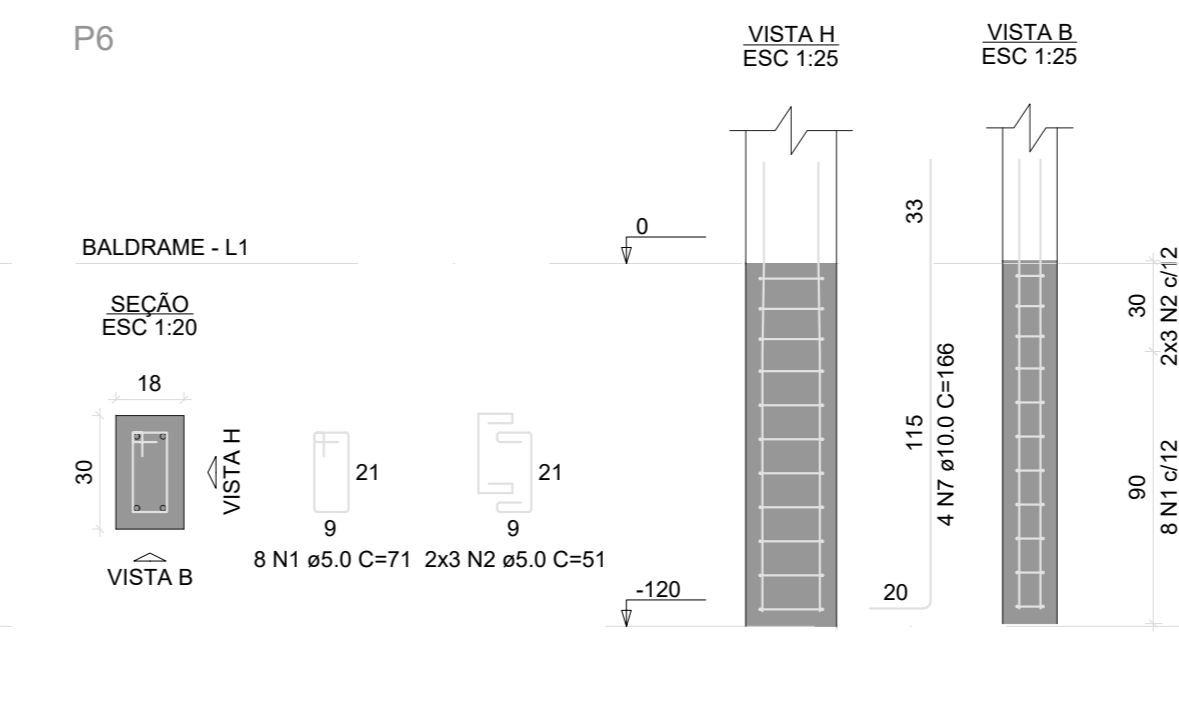
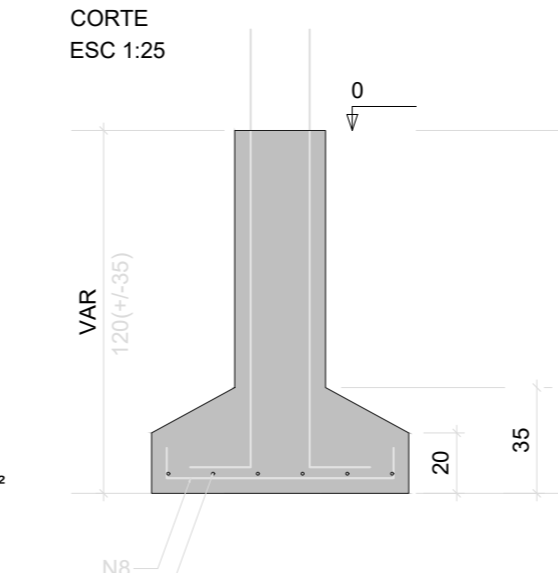
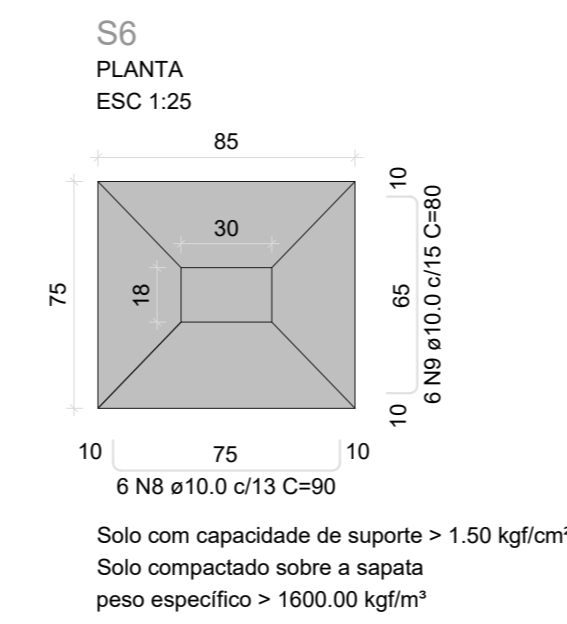
RELAÇÃO DO AÇO

CAÇO	N	DIAM (mm)	QUANT (m)	C.UNIT (cm)	C.TOTAL (cm)
CA60	1	5.0	28	85	2410
CA60	2	5.0	28	45	1260
CA60	3	5.0	12	85	1020
CA60	4	5.0	4	45	180
CA60	5	5.0	12	45	540
CA60	6	5.0	8	51	408
CA60	7	5.0	10	71	710
CA60	8	5.0	10	65	650
CA60	9	10.0	30	80	2400
CA60	10	10.0	30	95	2850
CA60	11	10.0	12	80	960
CA60	12	10.0	18	115	2070
CA60	13	10.0	14	110	1540
CA60	14	10.0	12	115	1380
CA60	15	10.0	14	130	1820
CA60	16	10.0	12	120	1440
CA60	17	10.0	12	140	1680
CA60	18	12.5	26	174	4524
CA60	19	12.5	12	127	1524

RESUMO DO AÇO

AÇO	DIAM (mm)	C. TOTAL (m)	PESO + 10% (kg)
CA50	10.0	182.3	23.6
CA60	12.5	68.5	8.4
CA60	5.0	71	12
PESO TOTAL (kg)			187.7
CA50			187.7
CA60			12

Volume de concreto (C-30) = 3.04 m<sup>3</sup>  
Área de forma = 16.11 m<sup>2</sup>



RELAÇÃO DO AÇO

AÇO	N	DIAM (mm)	QUANT (m)	C.UNIT (cm)	C.TOTAL (cm)
CA60	1	5.0	8	71	568
CA60	2	5.0	6	51	306
CA60	3	5.0	12	65	780
CA60	4	5.0	8	45	360
CA60	5	5.0	40	75	3000
CA60	6	5.0	28	55	1540
CA60	7	10.0	14	166	2324
CA60	8	10.0	6	90	540
CA60	9	10.0	6	80	480
CA60	10	10.0	6	110	660
CA60	11	10.0	6	95	570
CA60	12	10.0	8	140	1120
CA60	13	10.0	6	130	780
CA60	14	10.0	14	130	1820
CA60	15	10.0	16	140	2240
CA60	16	10.0	12	115	1380
CA60	17	10.0	12	100	1200
CA60	18	10.0	14	120	1680
CA60	19	10.0	16	110	1760
CA60	20	12.5	36	174	6264

RESUMO DO AÇO

AÇO	DIAM (mm)	C. TOTAL (m)	PESO + 10% (kg)
CA50	10.0	164.4	112.2
CA60	12.5	62.6	66.4
CA60	5.0	65.5	11.1
PESO TOTAL (kg)			189.7
CA50			178.6
CA60			11.1

Volume de concreto (C-30) = 3.36 m<sup>3</sup>  
Área de forma = 15.03 m<sup>2</sup>