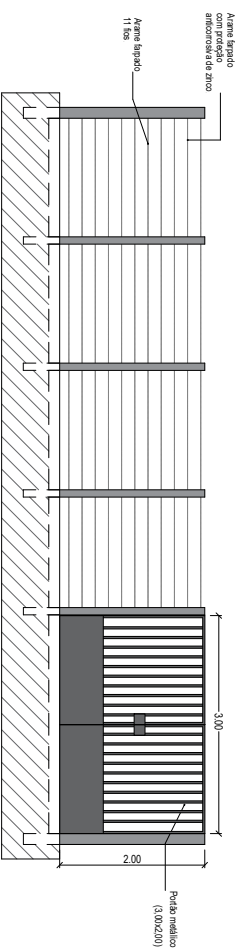
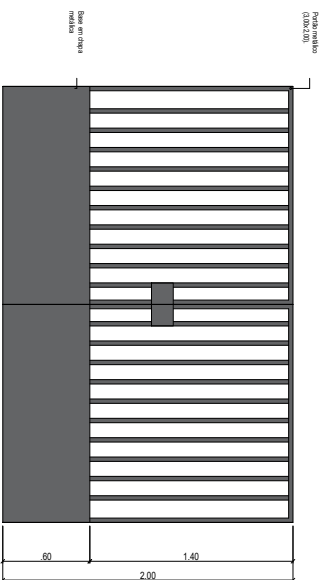


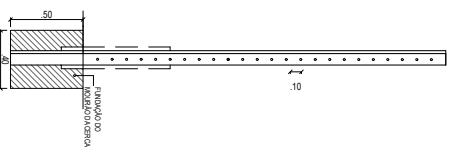
PLANTA DE BAIXA  
ESC.: 1:75



VISTA CERCADO  
ESC.: 1:75



VISTA PORTÃO METÁLICO  
ESC.: 1:25



| QUADRO DE ESQUADRIAS |  |        |
|----------------------|--|--------|
| ITEM                 | DESCRIÇÃO                              | QUANT. |
| P2                   | Portão de giro metálico (0,80 x 2,00m) | 01     |

**Planacon** Engenharia e Construção  
PLANEJAMENTO E ASSESSORIA DE PROJETOS TÉCNICOS LTDA.

CLIENTE: PREFEITURA MUNICIPAL DE CURRAL NOVO DO PIAUÍ

PROJETO: SISTEMA DE ABASTECIMENTO DA ÁGUA

COMÉRCIO: 969010/2024

DESENHO: PLANTA BAIXA CERCADO

PROJETSIM: DADOS DE CAMPO

DATA: 2025 REV: 00 FORMATO: A1 PRONOME: FRANCIS

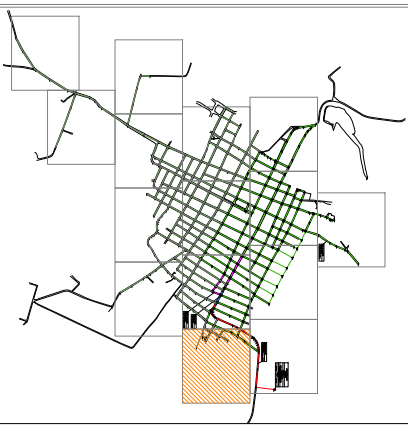








ARTICULAÇÃO

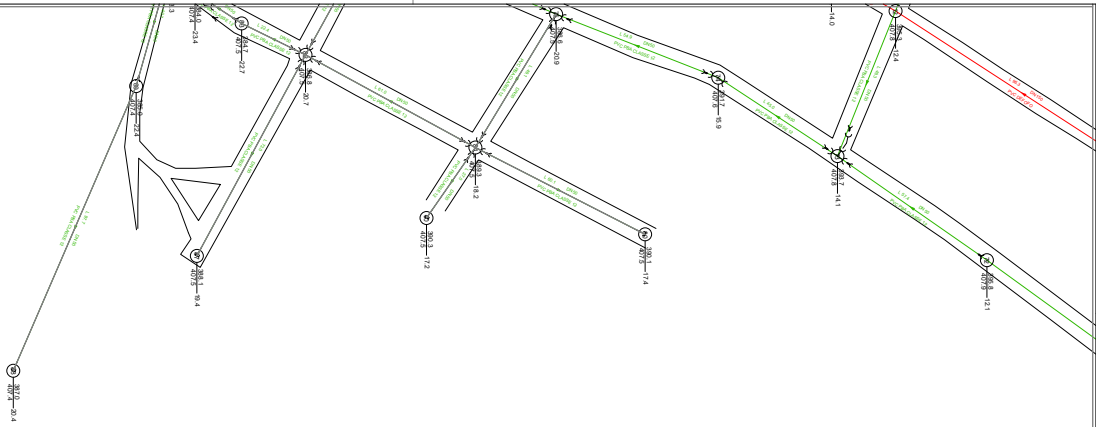


**REDE DE DISTRIBUIÇÃO**

- DN 150 mm (DREFOR)
- DN 100 mm (PBA)
- DN 75 mm (PBA)
- DN 50 mm (PBA)
- FUTURA AMPLIAÇÃO DE REDE

QUADRO DE PEÇAS

| DESCRIÇÃO             | SÍMBOLO |
|-----------------------|---------|
| Curved 90°            | ↘       |
| Curved 45°            | ↙       |
| Curved 22.5°          | ↘       |
| Curved 0°             | ↔       |
| Curved 90°/PVC/PEBA   | ↘       |
| Curved 45°/PVC/PEBA   | ↙       |
| Curved 22.5°/PVC/PEBA | ↘       |
| Curved 0°/PVC         | ↔       |
| Quentico/HDPE/CPBA    | ⊗       |
| Redução/PE/CPBA       | ⊗       |
| Quentico/HDPE/CPBA    | ⊗       |
| Tubo/CPBA             | —       |
| Curved 90°/PVC/PEBA   | ↘       |
| Curved 45°/PVC/PEBA   | ↙       |
| Tubo/CPBA             | —       |
| Redução/PE/CPBA       | ⊗       |
| Tubo/CPBA             | —       |
| Curved 90°/PVC/PEBA   | ↘       |

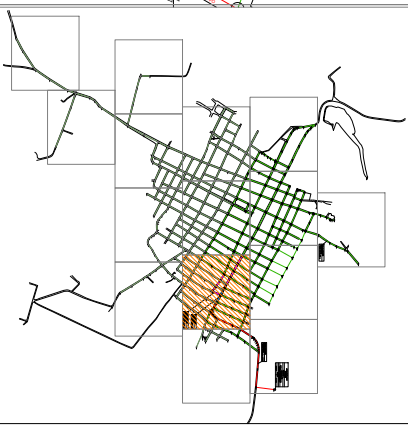


**PLANJAMENTO E ASSESSORIA DE PROJETOS TÉCNICOS LTDA.**

**CLIENTE:** PREFEITURA MUNICIPAL DE CURVAL NOVO DO PIAUÍ - PI  
**PROJETO:** IMPLANTACÃO DE SISTEMA DE ABASTECIMENTO DE ÁGUA  
**OPERAÇÃO E MANUTENÇÃO:** 2020 / 2024  
**LOCAL:** REDE DE DISTRIBUIÇÃO - PLANTAS MANUAIS

**PROJETO:** **PROJETO DE ABASTECIMENTO DE ÁGUA**  
**PROJETADE:** WANDERSON LIMA  
**REVISOR:** WANDERSON LIMA  
**DATA:** 02/15

ARTICULAÇÃO



REDE DE DISTRIBUIÇÃO

|  |                         |
|--|-------------------------|
|  | DN 150 mm (DIFORFO)     |
|  | DN 100 mm (PBA)         |
|  | DN 75 mm (PBA)          |
|  | DN 50 mm (PBA)          |
|  | DN 50 mm (PBA)          |
|  | FTUBIA AMPLIADA DE REDE |

QUADRO DE PEÇAS

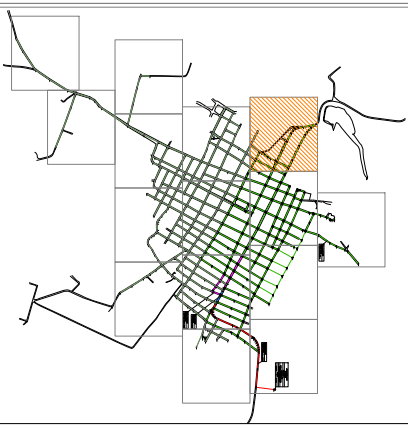
| DISCRIMINAÇÃO  | SÍMBOLO |
|----------------|---------|
| Curved 90°     |         |
| Curved 270°    |         |
| Curved 45°     |         |
| Curved 225°    |         |
| Curved 135°    |         |
| Curved 165°    |         |
| Curved 195°    |         |
| Curved 202.5°  |         |
| Curved 207°    |         |
| Curved 211.5°  |         |
| Curved 216°    |         |
| Curved 220.5°  |         |
| Curved 225°    |         |
| Curved 229.5°  |         |
| Curved 234°    |         |
| Curved 238.5°  |         |
| Curved 243°    |         |
| Curved 247.5°  |         |
| Curved 252°    |         |
| Curved 256.5°  |         |
| Curved 261°    |         |
| Curved 265.5°  |         |
| Curved 270°    |         |
| Curved 274.5°  |         |
| Curved 279°    |         |
| Curved 283.5°  |         |
| Curved 288°    |         |
| Curved 292.5°  |         |
| Curved 297°    |         |
| Curved 301.5°  |         |
| Curved 306°    |         |
| Curved 310.5°  |         |
| Curved 315°    |         |
| Curved 319.5°  |         |
| Curved 324°    |         |
| Curved 328.5°  |         |
| Curved 333°    |         |
| Curved 337.5°  |         |
| Curved 342°    |         |
| Curved 346.5°  |         |
| Curved 351°    |         |
| Curved 355.5°  |         |
| Curved 360°    |         |
| Curved 364.5°  |         |
| Curved 369°    |         |
| Curved 373.5°  |         |
| Curved 378°    |         |
| Curved 382.5°  |         |
| Curved 387°    |         |
| Curved 391.5°  |         |
| Curved 396°    |         |
| Curved 400.5°  |         |
| Curved 405°    |         |
| Curved 409.5°  |         |
| Curved 414°    |         |
| Curved 418.5°  |         |
| Curved 423°    |         |
| Curved 427.5°  |         |
| Curved 432°    |         |
| Curved 436.5°  |         |
| Curved 441°    |         |
| Curved 445.5°  |         |
| Curved 450°    |         |
| Curved 454.5°  |         |
| Curved 459°    |         |
| Curved 463.5°  |         |
| Curved 468°    |         |
| Curved 472.5°  |         |
| Curved 477°    |         |
| Curved 481.5°  |         |
| Curved 486°    |         |
| Curved 490.5°  |         |
| Curved 495°    |         |
| Curved 499.5°  |         |
| Curved 504°    |         |
| Curved 508.5°  |         |
| Curved 513°    |         |
| Curved 517.5°  |         |
| Curved 522°    |         |
| Curved 526.5°  |         |
| Curved 531°    |         |
| Curved 535.5°  |         |
| Curved 540°    |         |
| Curved 544.5°  |         |
| Curved 549°    |         |
| Curved 553.5°  |         |
| Curved 558°    |         |
| Curved 562.5°  |         |
| Curved 567°    |         |
| Curved 571.5°  |         |
| Curved 576°    |         |
| Curved 580.5°  |         |
| Curved 585°    |         |
| Curved 589.5°  |         |
| Curved 594°    |         |
| Curved 598.5°  |         |
| Curved 603°    |         |
| Curved 607.5°  |         |
| Curved 612°    |         |
| Curved 616.5°  |         |
| Curved 621°    |         |
| Curved 625.5°  |         |
| Curved 630°    |         |
| Curved 634.5°  |         |
| Curved 639°    |         |
| Curved 643.5°  |         |
| Curved 648°    |         |
| Curved 652.5°  |         |
| Curved 657°    |         |
| Curved 661.5°  |         |
| Curved 666°    |         |
| Curved 670.5°  |         |
| Curved 675°    |         |
| Curved 679.5°  |         |
| Curved 684°    |         |
| Curved 688.5°  |         |
| Curved 693°    |         |
| Curved 697.5°  |         |
| Curved 702°    |         |
| Curved 706.5°  |         |
| Curved 711°    |         |
| Curved 715.5°  |         |
| Curved 720°    |         |
| Curved 724.5°  |         |
| Curved 729°    |         |
| Curved 733.5°  |         |
| Curved 738°    |         |
| Curved 742.5°  |         |
| Curved 747°    |         |
| Curved 751.5°  |         |
| Curved 756°    |         |
| Curved 760.5°  |         |
| Curved 765°    |         |
| Curved 769.5°  |         |
| Curved 774°    |         |
| Curved 778.5°  |         |
| Curved 783°    |         |
| Curved 787.5°  |         |
| Curved 792°    |         |
| Curved 796.5°  |         |
| Curved 801°    |         |
| Curved 805.5°  |         |
| Curved 810°    |         |
| Curved 814.5°  |         |
| Curved 819°    |         |
| Curved 823.5°  |         |
| Curved 828°    |         |
| Curved 832.5°  |         |
| Curved 837°    |         |
| Curved 841.5°  |         |
| Curved 846°    |         |
| Curved 850.5°  |         |
| Curved 855°    |         |
| Curved 859.5°  |         |
| Curved 864°    |         |
| Curved 868.5°  |         |
| Curved 873°    |         |
| Curved 877.5°  |         |
| Curved 882°    |         |
| Curved 886.5°  |         |
| Curved 891°    |         |
| Curved 895.5°  |         |
| Curved 900°    |         |
| Curved 904.5°  |         |
| Curved 909°    |         |
| Curved 913.5°  |         |
| Curved 918°    |         |
| Curved 922.5°  |         |
| Curved 927°    |         |
| Curved 931.5°  |         |
| Curved 936°    |         |
| Curved 940.5°  |         |
| Curved 945°    |         |
| Curved 949.5°  |         |
| Curved 954°    |         |
| Curved 958.5°  |         |
| Curved 963°    |         |
| Curved 967.5°  |         |
| Curved 972°    |         |
| Curved 976.5°  |         |
| Curved 981°    |         |
| Curved 985.5°  |         |
| Curved 990°    |         |
| Curved 994.5°  |         |
| Curved 999°    |         |
| Curved 1003.5° |         |
| Curved 1008°   |         |
| Curved 1012.5° |         |
| Curved 1017°   |         |
| Curved 1021.5° |         |
| Curved 1026°   |         |
| Curved 1030.5° |         |
| Curved 1035°   |         |
| Curved 1039.5° |         |
| Curved 1044°   |         |
| Curved 1048.5° |         |
| Curved 1053°   |         |
| Curved 1057.5° |         |
| Curved 1062°   |         |
| Curved 1066.5° |         |
| Curved 1071°   |         |
| Curved 1075.5° |         |
| Curved 1080°   |         |
| Curved 1084.5° |         |
| Curved 1089°   |         |
| Curved 1093.5° |         |
| Curved 1098°   |         |
| Curved 1102.5° |         |
| Curved 1107°   |         |
| Curved 1111.5° |         |
| Curved 1116°   |         |
| Curved 1120.5° |         |
| Curved 1125°   |         |
| Curved 1129.5° |         |
| Curved 1134°   |         |
| Curved 1138.5° |         |
| Curved 1143°   |         |
| Curved 1147.5° |         |
| Curved 1152°   |         |
| Curved 1156.5° |         |
| Curved 1161°   |         |
| Curved 1165.5° |         |
| Curved 1170°   |         |
| Curved 1174.5° |         |
| Curved 1179°   |         |
| Curved 1183.5° |         |
| Curved 1188°   |         |
| Curved 1192.5° |         |
| Curved 1197°   |         |
| Curved 1201.5° |         |
| Curved 1206°   |         |
| Curved 1210.5° |         |
| Curved 1215°   |         |
| Curved 1219.5° |         |
| Curved 1224°   |         |
| Curved 1228.5° |         |
| Curved 1233°   |         |
| Curved 1237.5° |         |
| Curved 1242°   |         |
| Curved 1246.5° |         |
| Curved 1251°   |         |
| Curved 1255.5° |         |
| Curved 1260°   |         |
| Curved 1264.5° |         |
| Curved 1269°   |         |
| Curved 1273.5° |         |
| Curved 1278°   |         |
| Curved 1282.5° |         |
| Curved 1287°   |         |
| Curved 1291.5° |         |
| Curved 1296°   |         |
| Curved 1300.5° |         |
| Curved 1305°   |         |
| Curved 1309.5° |         |
| Curved 1314°   |         |
| Curved 1318.5° |         |
| Curved 1323°   |         |
| Curved 1327.5° |         |
| Curved 1332°   |         |
| Curved 1336.5° |         |
| Curved 1341°   |         |
| Curved 1345.5° |         |
| Curved 1350°   |         |
| Curved 1354.5° |         |
| Curved 1359°   |         |
| Curved 1363.5° |         |
| Curved 1368°   |         |
| Curved 1372.5° |         |
| Curved 1377°   |         |
| Curved 1381.5° |         |
| Curved 1386°   |         |
| Curved 1390.5° |         |
| Curved 1395°   |         |
| Curved 1399.5° |         |
| Curved 1404°   |         |
| Curved 1408.5° |         |
| Curved 1413°   |         |
| Curved 1417.5° |         |
| Curved 1422°   |         |
| Curved 1426.5° |         |
| Curved 1431°   |         |
| Curved 1435.5° |         |
| Curved 1440°   |         |
| Curved 1444.5° |         |
| Curved 1449°   |         |
| Curved 1453.5° |         |
| Curved 1458°   |         |
| Curved 1462.5° |         |
| Curved 1467°   |         |
| Curved 1471.5° |         |
| Curved 1476°   |         |
| Curved 1480.5° |         |
| Curved 1485°   |         |
| Curved 1489.5° |         |
| Curved 1494°   |         |
| Curved 1498.5° |         |
| Curved 1503°   |         |
| Curved 1507.5° |         |
| Curved 1512°   |         |
| Curved 1516.5° |         |
| Curved 1521°   |         |
| Curved 1525.5° |         |
| Curved 1530°   |         |
| Curved 1534.5° |         |
| Curved 1539°   |         |
| Curved 1543.5° |         |
| Curved 1548°   |         |
| Curved 1552.5° |         |
| Curved 1557°   |         |
| Curved 1561.5° |         |
| Curved 1566°   |         |
| Curved 1570.5° |         |
| Curved 1575°   |         |
| Curved 1579.5° |         |







ARTICULAÇÃO

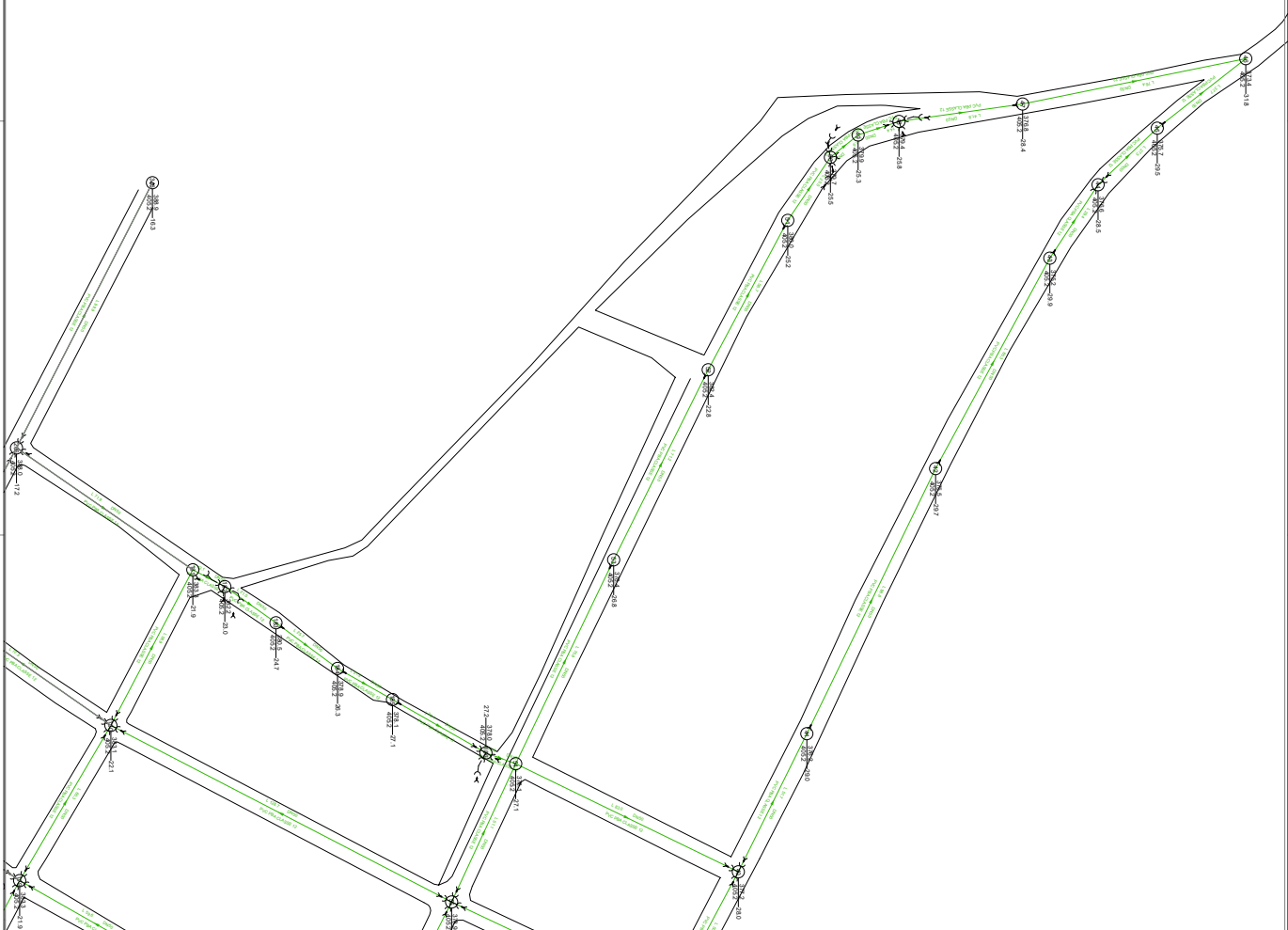


REDE DE DISTRIBUIÇÃO

- DN 150 mm (DEFORO)
- DN 100 mm (PBA)
- DN 75 mm (PBA)
- DN 50 mm (PBA)
- FUTURA AMPLIAÇÃO DE REDE

QUADRO DE PEÇAS

| DISCRIMINAÇÃO                                 | SÍMBOLO |
|---|---------|
| Curvad <sup>90</sup><br>Curvad <sup>270</sup> | ↘<br>↙  |
| Curv45  | ↘       |
| Curvad <sup>225</sup>                         | ↙       |
| Curvetic/ <sup>90</sup>                       | ↘       |
| Curvetic/ <sup>270</sup>                      | ↙       |
| Curvetic/ <sup>45</sup>                       | ↘       |
| Curvetic/ <sup>135</sup>                      | ↙       |
| Curvetic/ <sup>180</sup>                      | ↔       |
| Curvetic/ <sup>225</sup>                      | ↔       |
| Curvetic/ <sup>315</sup>                      | ↔       |
| Curvetic/ <sup>360</sup>                      | ↔       |
| Curvetic/ <sup>45</sup>                       | ↘       |
| Curvetic/ <sup>135</sup>                      | ↙       |
| Curvetic/ <sup>225</sup>                      | ↘       |
| Curvetic/ <sup>315</sup>                      | ↙       |
| Curvetic/ <sup>360</sup>                      | ↔       |
| Curvetic/ <sup>45</sup>                       | ↘       |
| Curvetic/ <sup>135</sup>                      | ↙       |
| Curvetic/ <sup>225</sup>                      | ↘       |
| Curvetic/ <sup>315</sup>                      | ↙       |
| Curvetic/ <sup>360</sup>                      | ↔       |
| Curvetic/ <sup>45</sup>                       | ↘       |
| Curvetic/ <sup>135</sup>                      | ↙       |
| Curvetic/ <sup>225</sup>                      | ↘       |
| Curvetic/ <sup>315</sup>                      | ↙       |
| Curvetic/ <sup>360</sup>                      | ↔       |



**PLANAJAMENTO E ASSESSORIA DE PROJETOS TÉCNICOS LTDA.**

CONTE: FREGATEIRA MUNICIPAL DE CUBATI, NOVO RIO PLAJAL - RJ

PROJETO: REDE DE DISTRIBUIÇÃO DE ABASTECIMENTO DE ÁGUA

CONTE Nº: 2024 / 2024

PROJETO Nº: 2024 / 2024

PROJETO Nº: 2024 / 2024

PROJETO Nº: 2024 / 2024

PROJETO Nº: 2024 / 2024

PROJETO Nº: 2024 / 2024