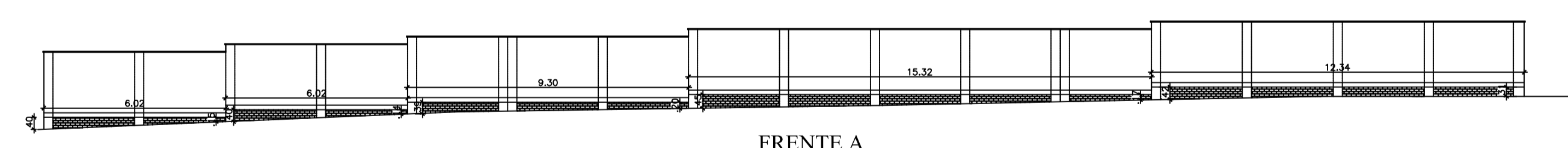
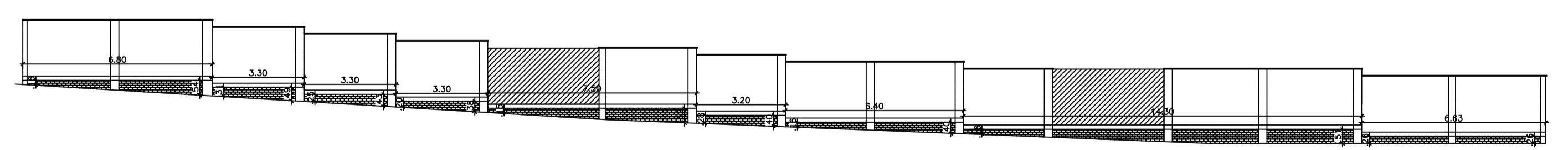


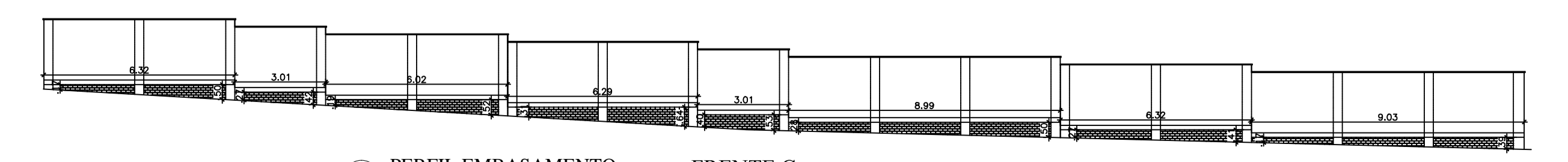
01 LEVANTAMENTO PLANIALTIMÉTRICO
escala: 1/150



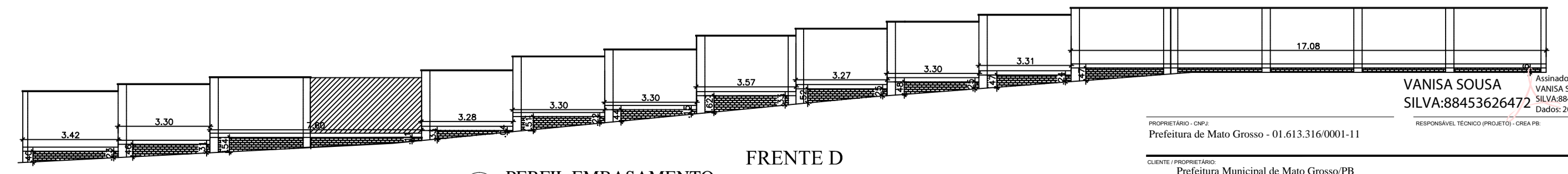
FRENTE A
02 PERFIL EMBASAMENTO
escala: 1/150



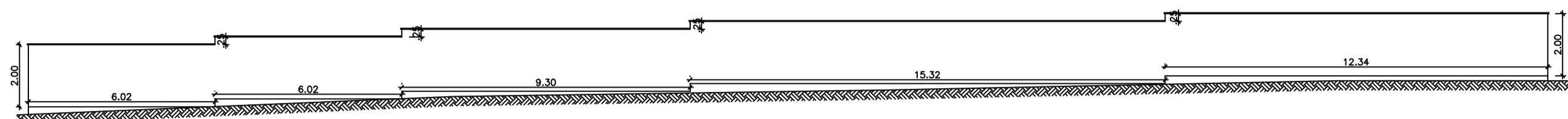
03 PERFIL EMBASAMENTO
escala: 1/150 FRENTE B



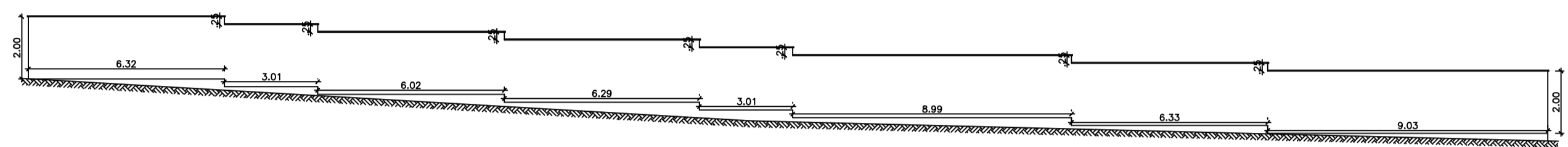
04 PERFIL EMBASAMENTO
escala: 1/150 FRENTE C



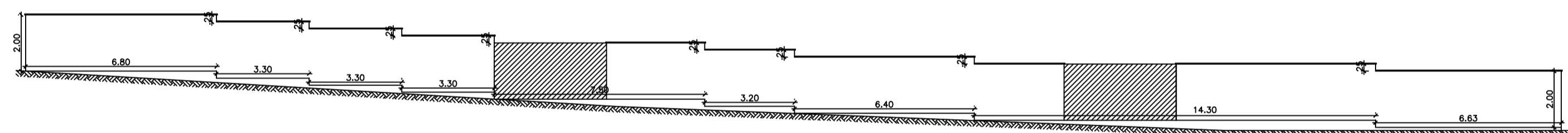
05 PERFIL EMBASAMENTO
escala: 1/150 FRENTE D



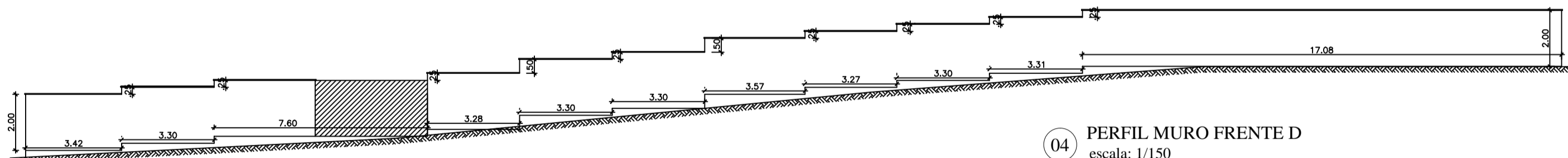
01 PERFIL MURO FRENTE A
escala: 1/150



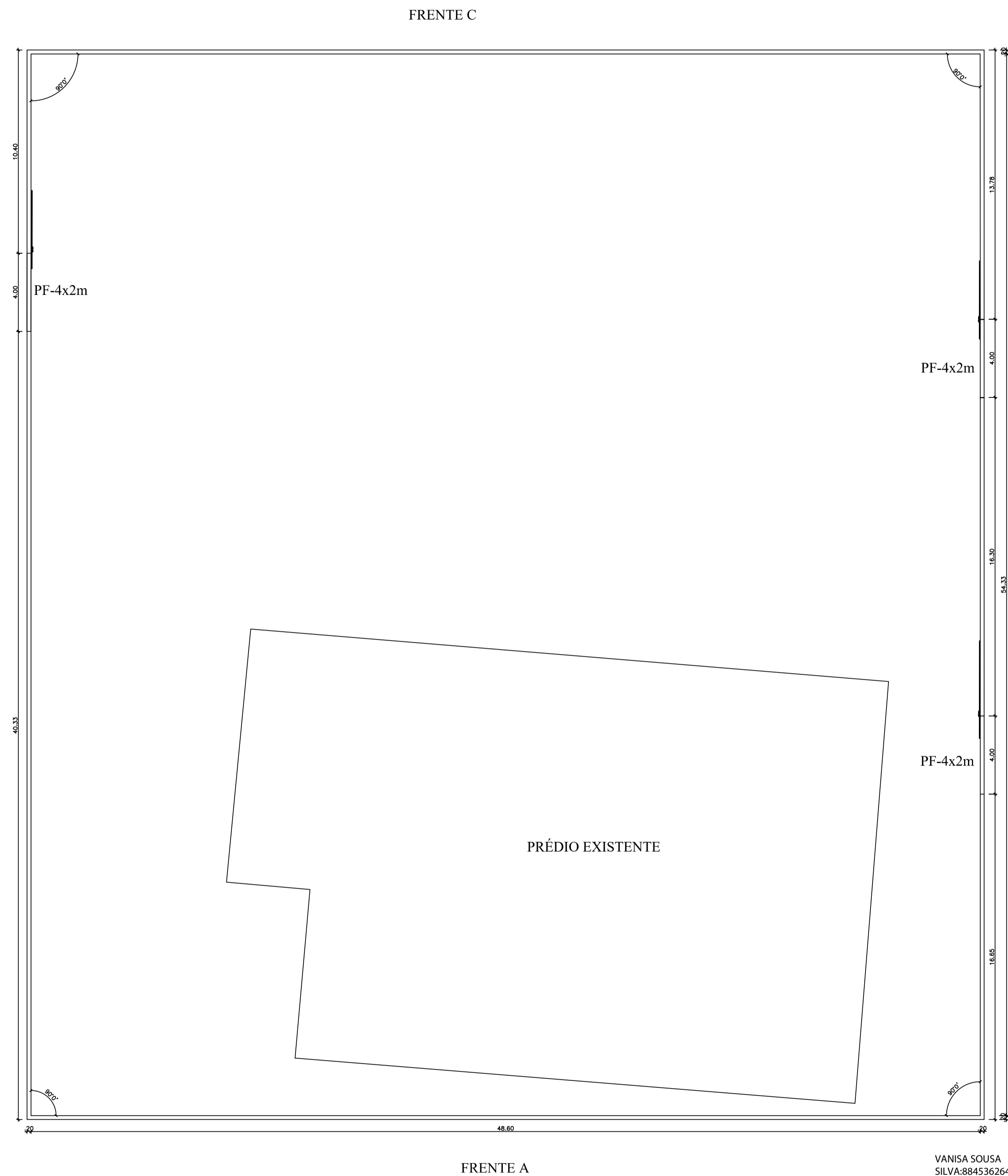
02 PERFIL MURO FRENTE C
escala: 1/150



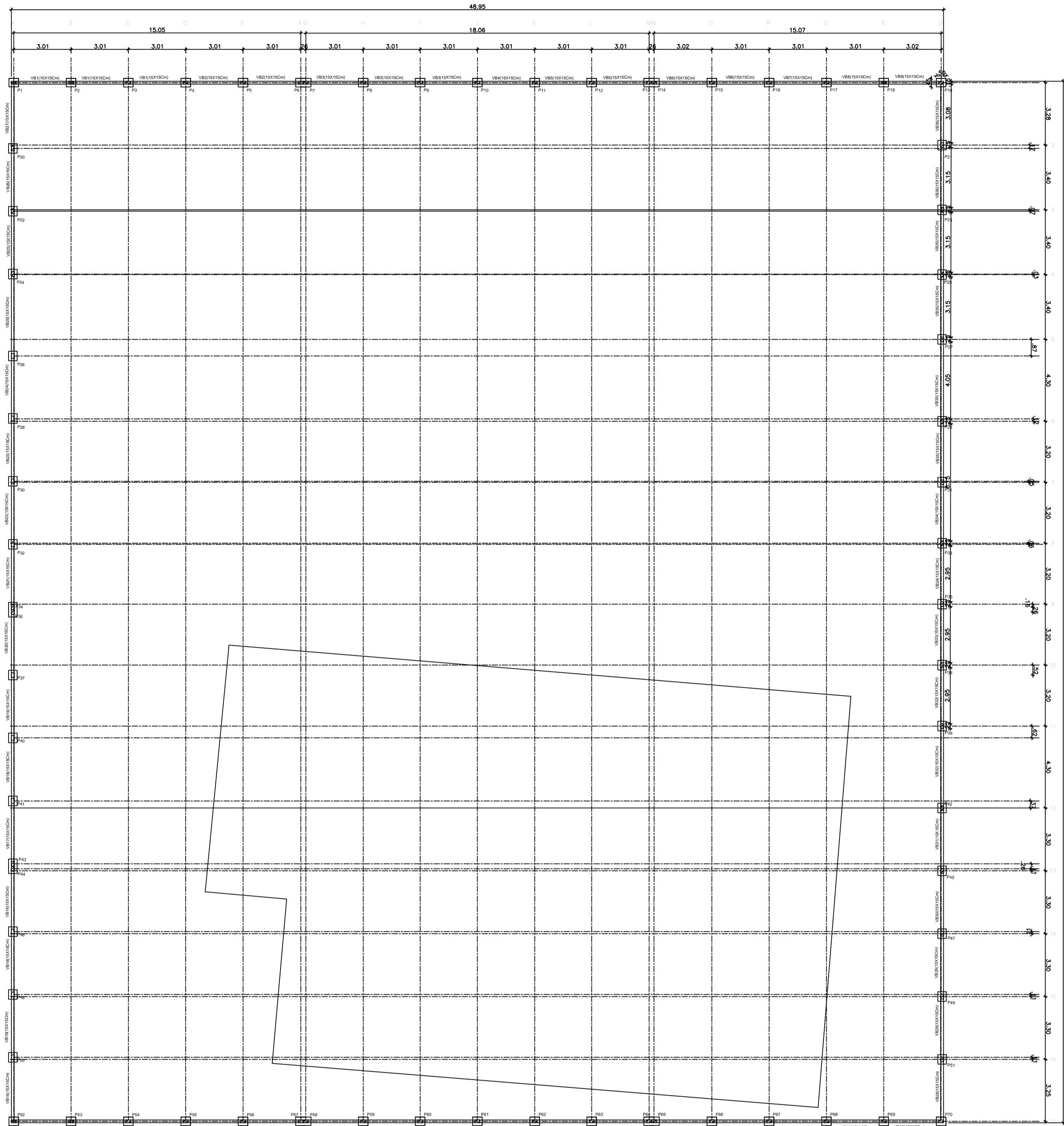
03 PERFIL MURO FRENTE B
escala: 1/150



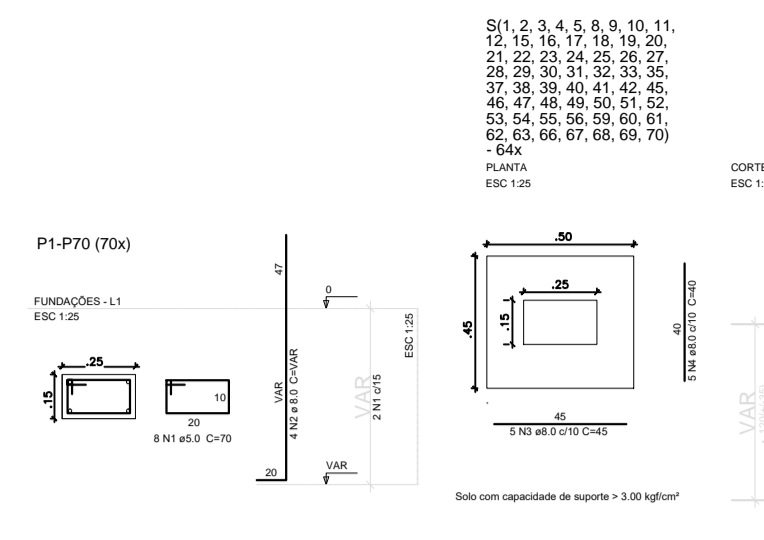
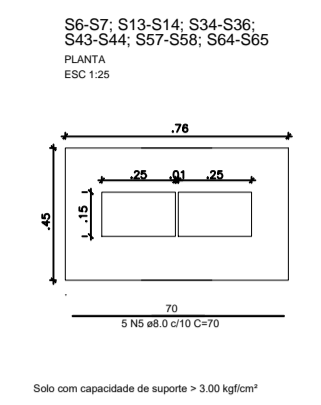
04 PERFIL MURO FRENTE D
escala: 1/150



05 PLANTA BAIXA
escala: 1/150



Forma do pavimento Fundações



S(1, 2, 3, 4, 5, 8, 9, 10, 11, 12, 13, 14, 17, 18, 19, 20, 21, 22, 23, 24, 25, 26, 27, 28, 29, 30, 31, 32, 33, 35, 37, 38, 39, 40, 41, 42, 45, 46, 47, 48, 49, 50, 51, 52, 53, 54, 55, 56, 59, 60, 61, 62, 63, 66, 67, 68, 69, 70)

Relação do aço

ACO	N	DIAM	L	ESP	C TOTAL
CAB	1	5.0	141	25	1780
CAB	2	8.0	280	100	2800
CAB	3	8.0	280	40	1080
CAB	4	8.0	30	10	240

Resumo do aço

ACO	DIAM	C TOTAL	PESO	PESO %
CAB	8.0	2800	100.00	100.00
CAB	5.0	1780	63.71	63.71
CAB	5.0	1150	41.64	41.64
CAB	5.0	240	8.64	8.64

Vol. de concreto (C 25) = 3.38 m³
Área de forma (M) = 32.22 m²

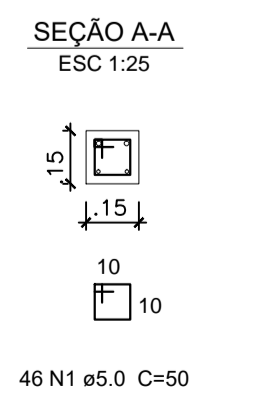
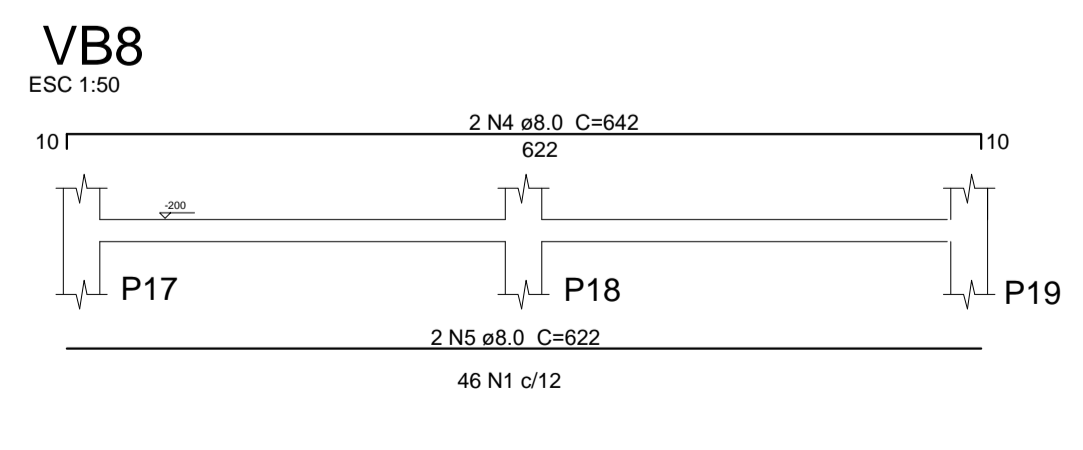
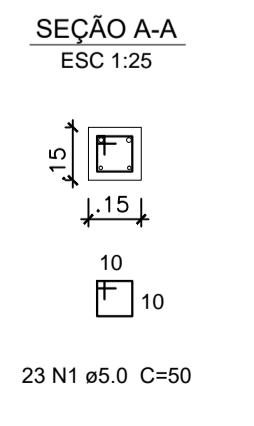
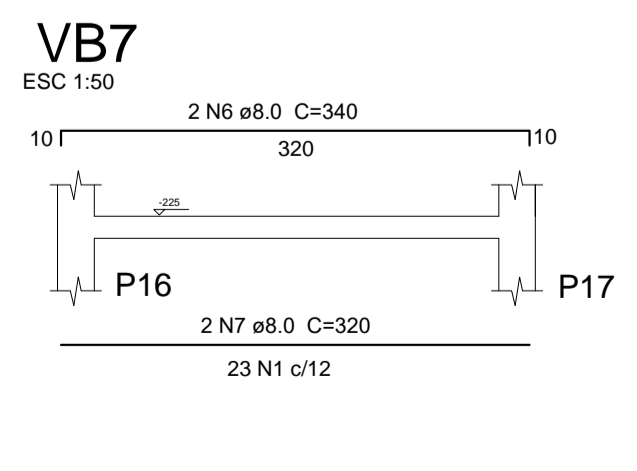
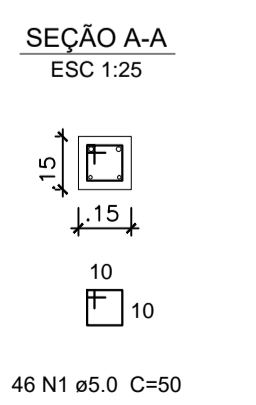
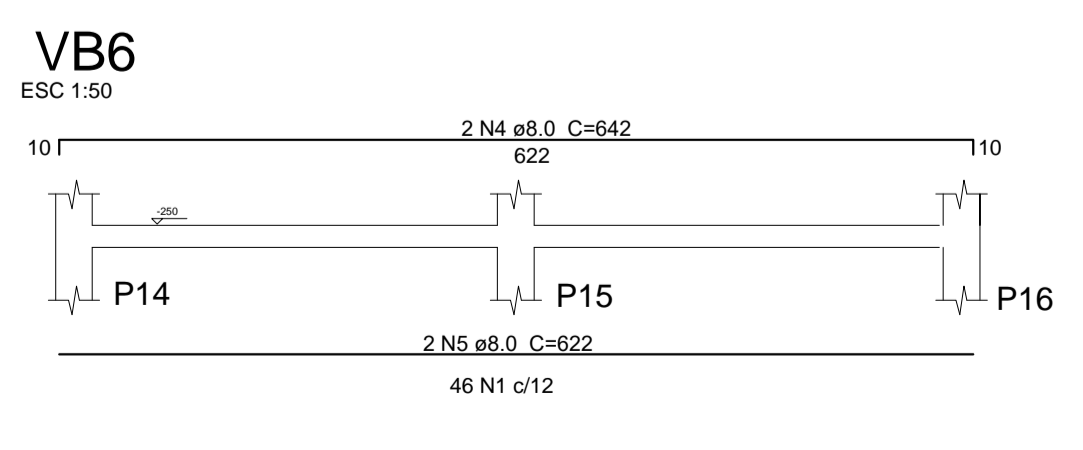
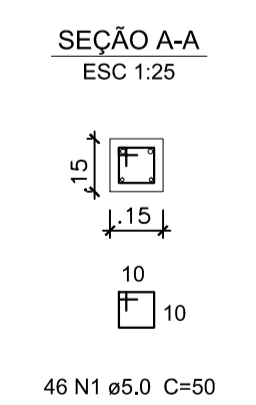
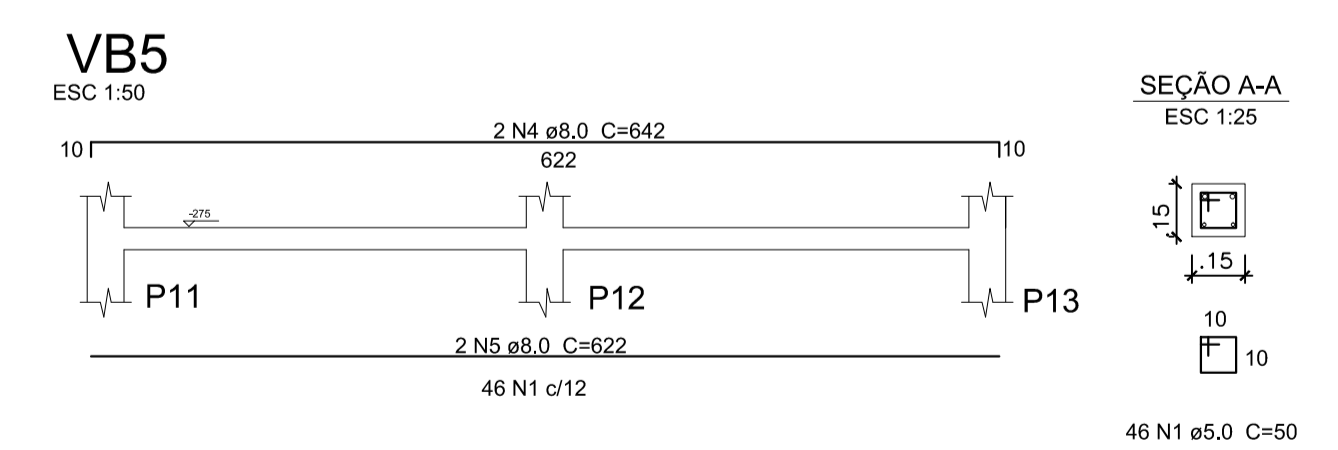
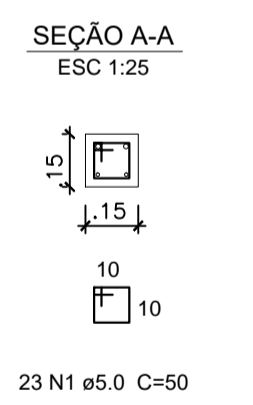
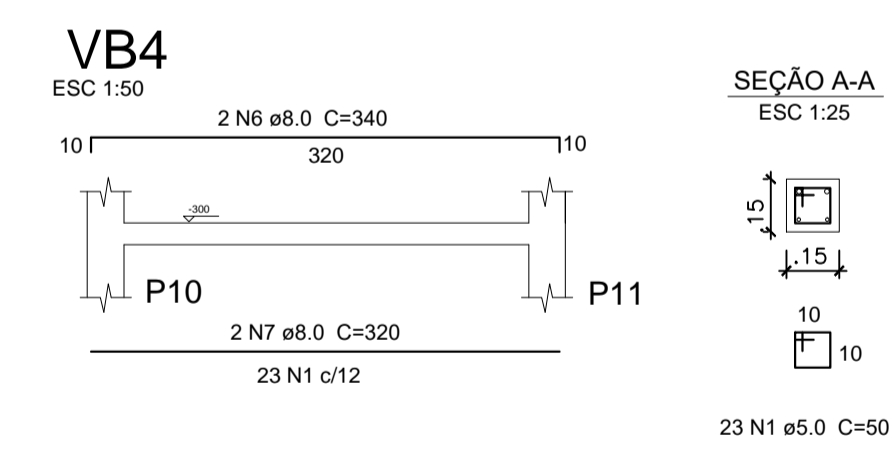
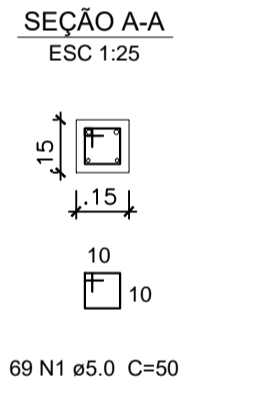
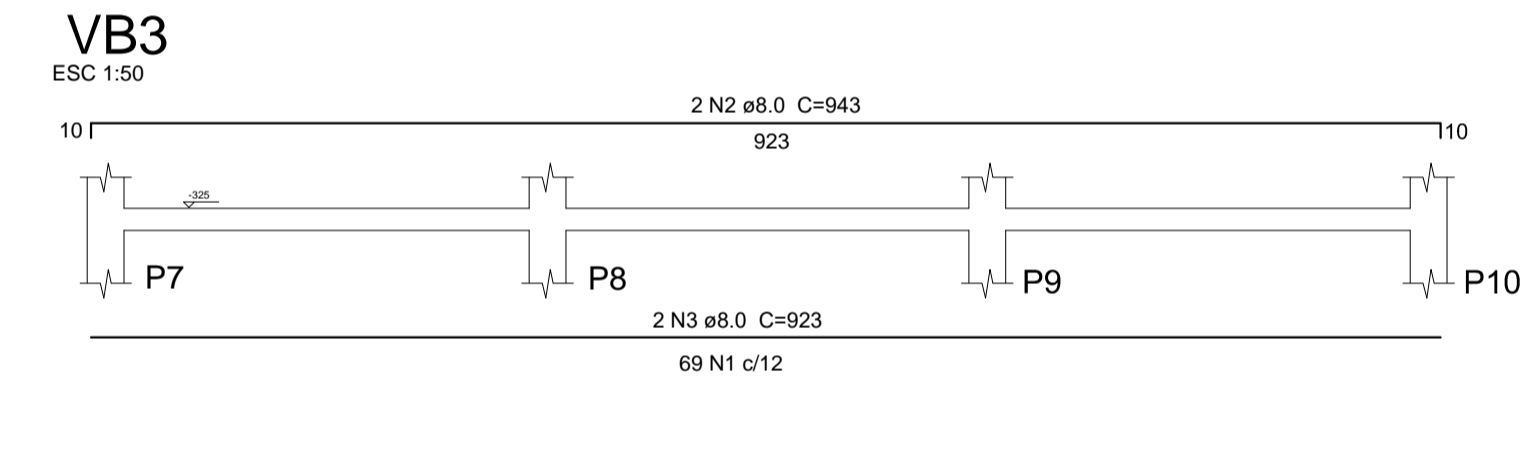
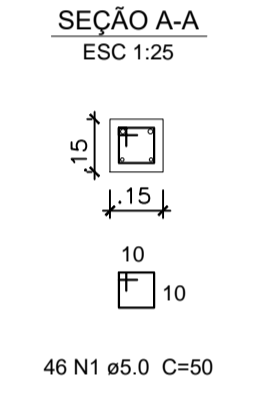
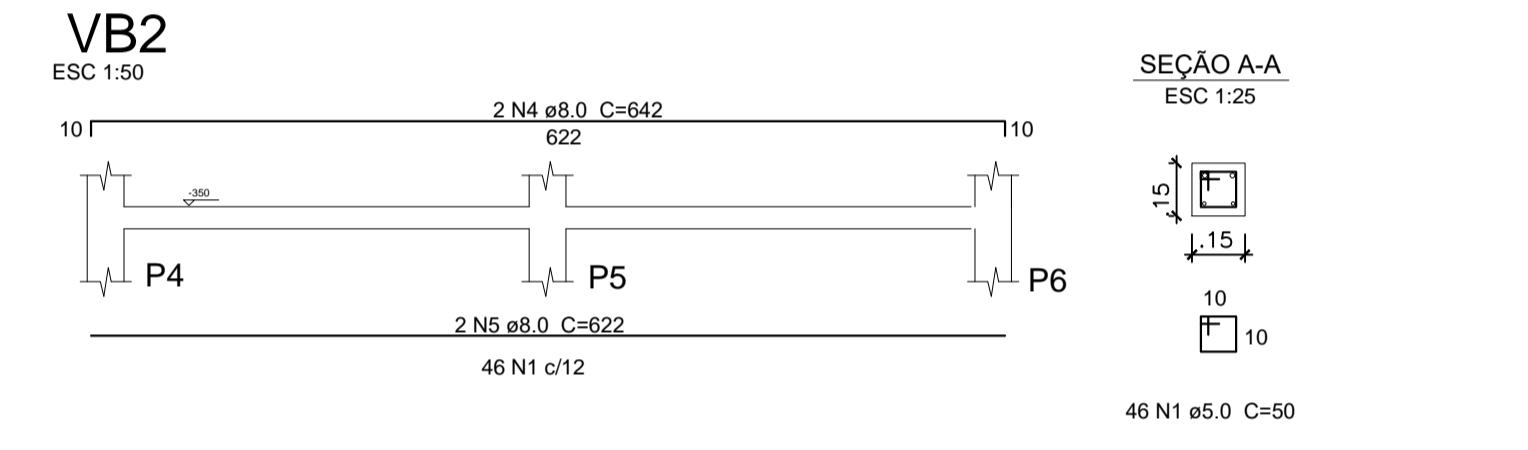
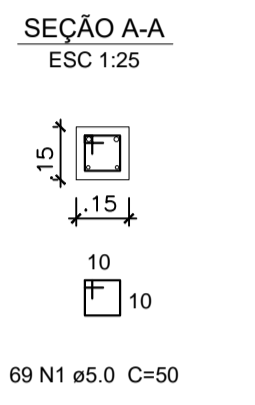
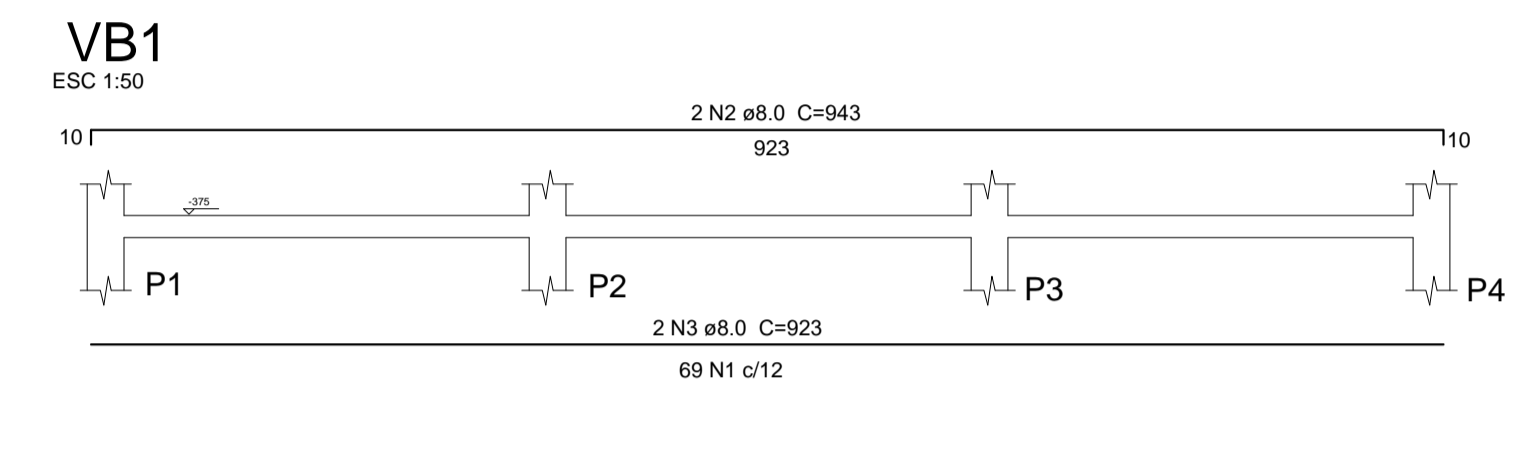
Relação do aço

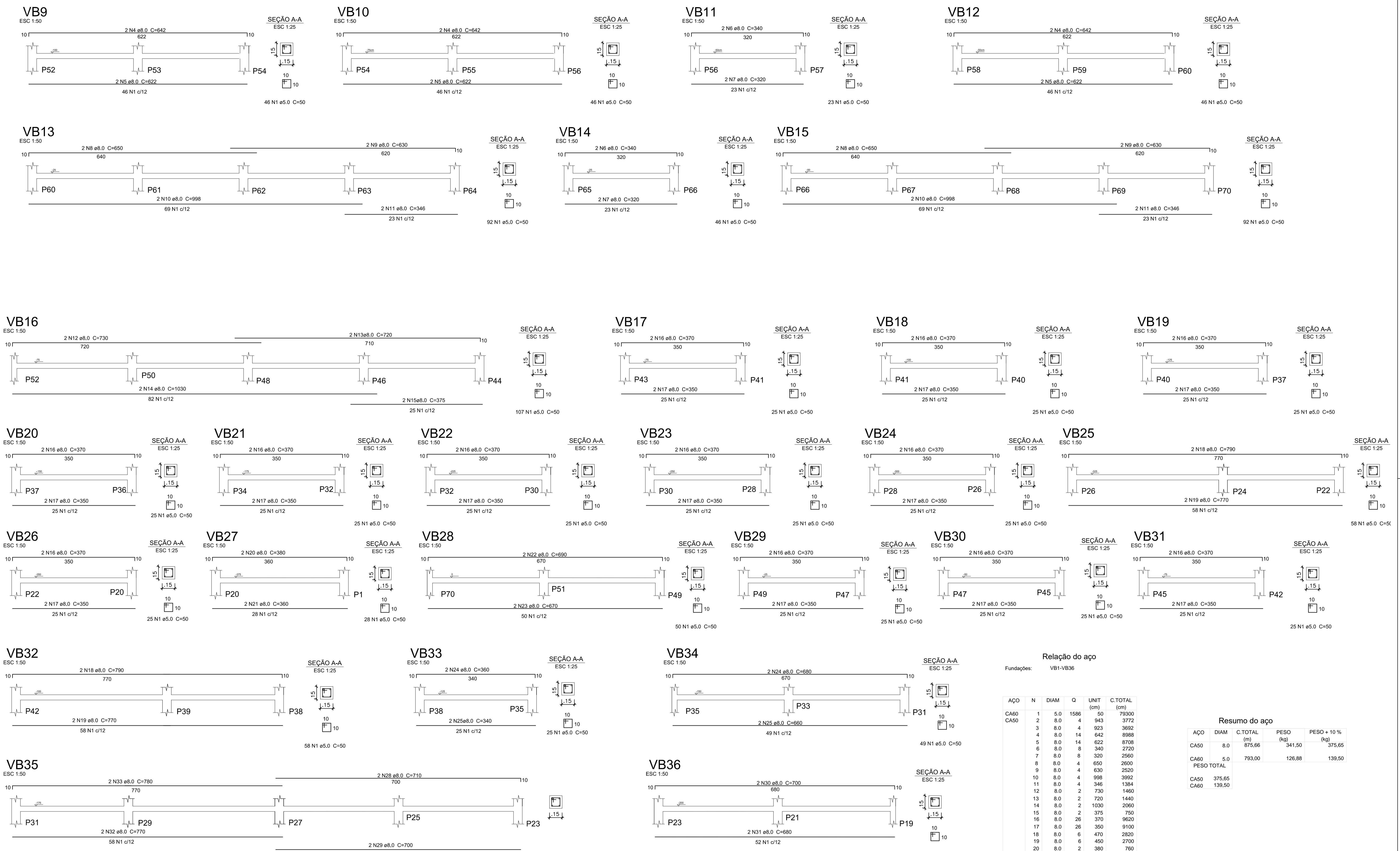
ACO	N	DIAM	L	ESP	C TOTAL
CAB	1	5.0	141	25	1780
CAB	2	8.0	280	100	2800

Resumo do aço

ACO	DIAM	C TOTAL	PESO	PESO %
CAB	8.0	2800	100.00	100.00
CAB	5.0	1780	63.71	63.71

Vol. de concreto (C 25) = 3.38 m³
Área de forma (M) = 32.22 m²





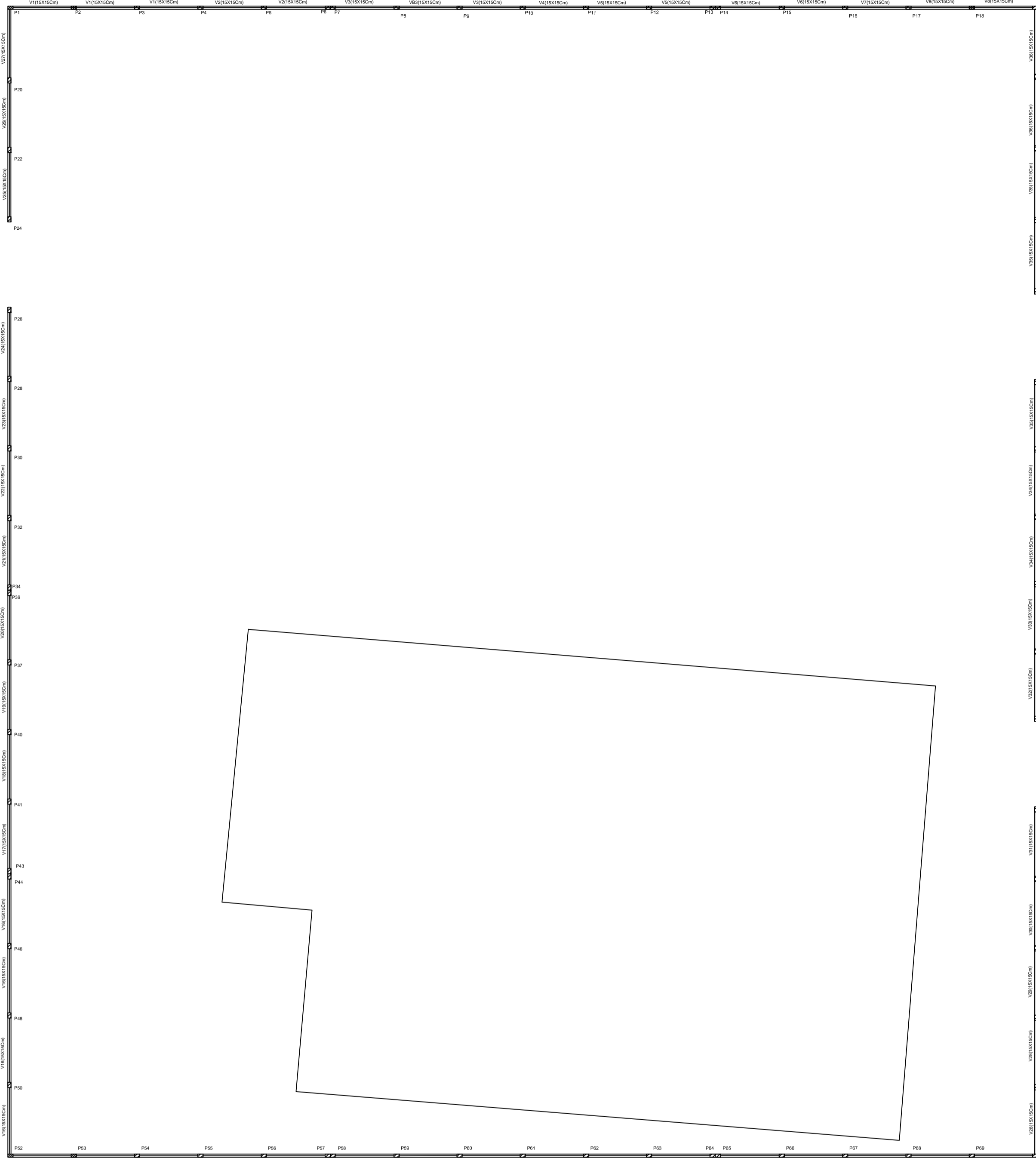
Relação do aço

Fundações: VB1-VB36

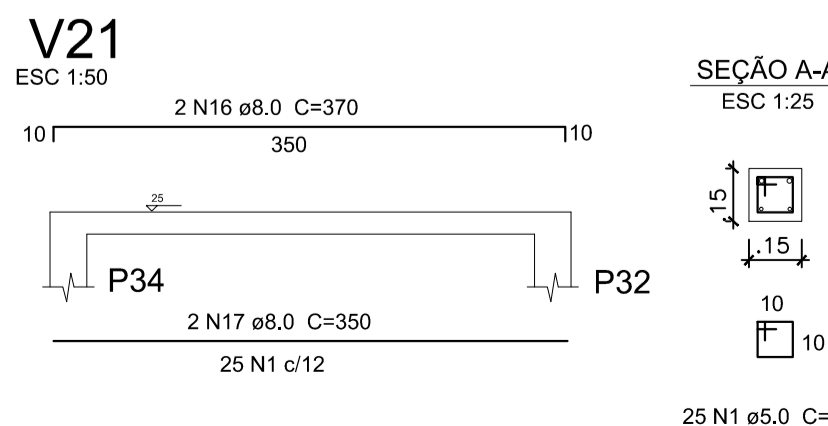
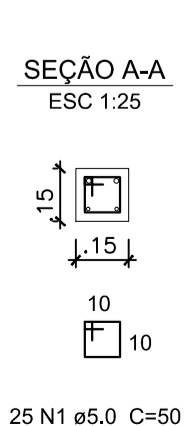
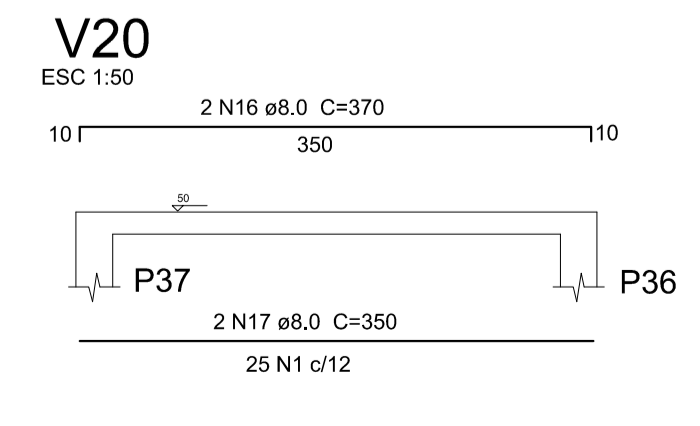
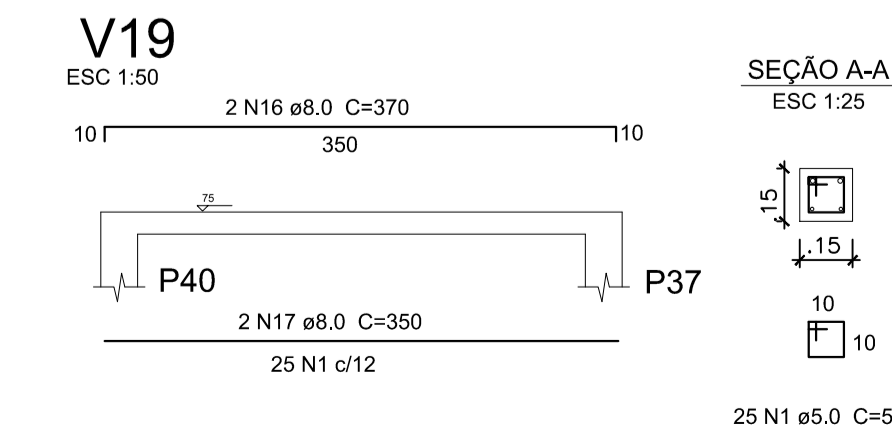
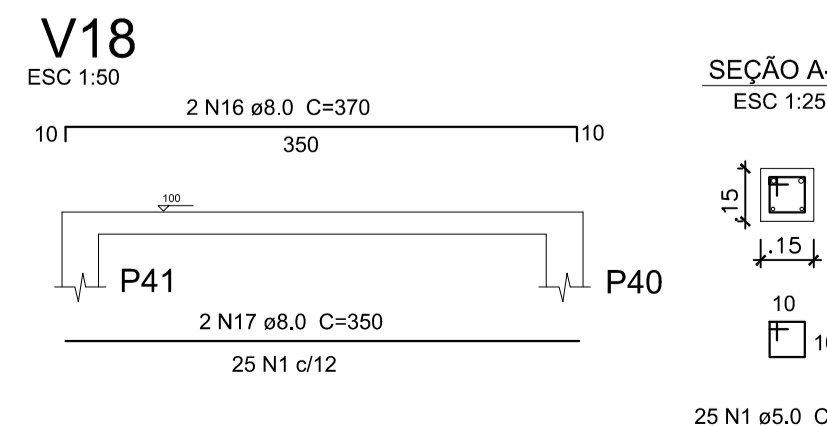
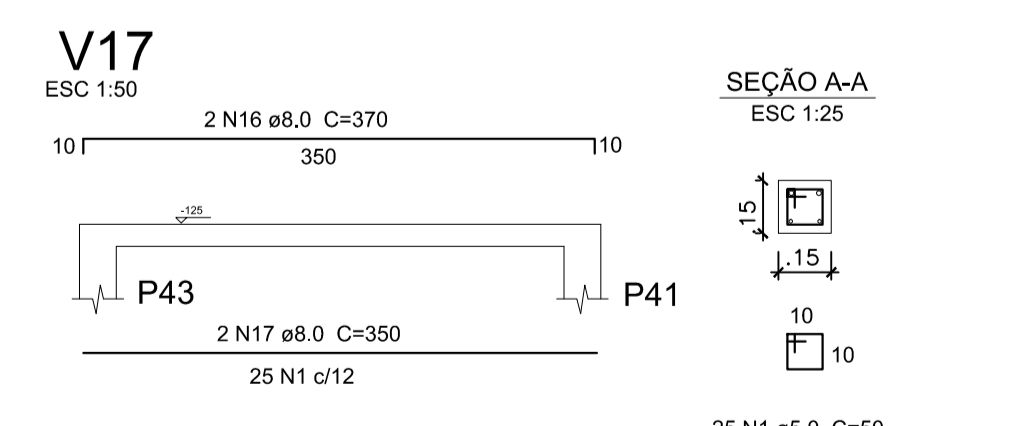
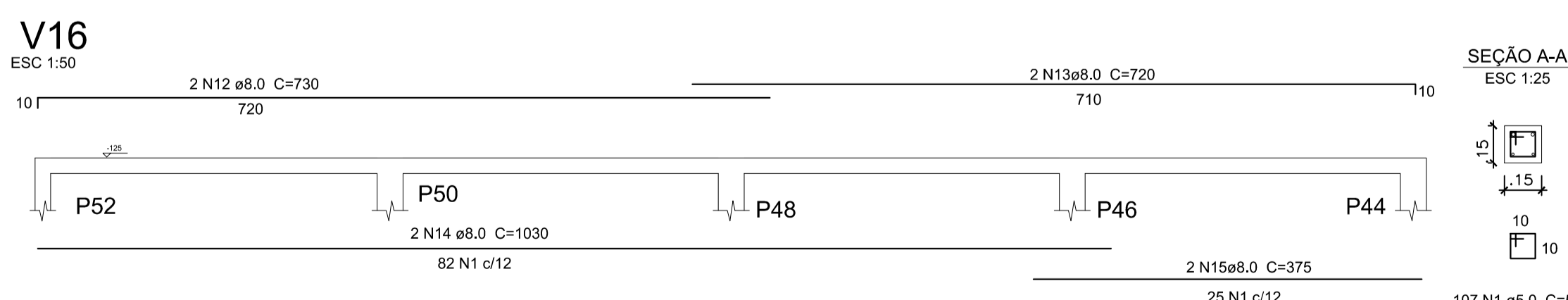
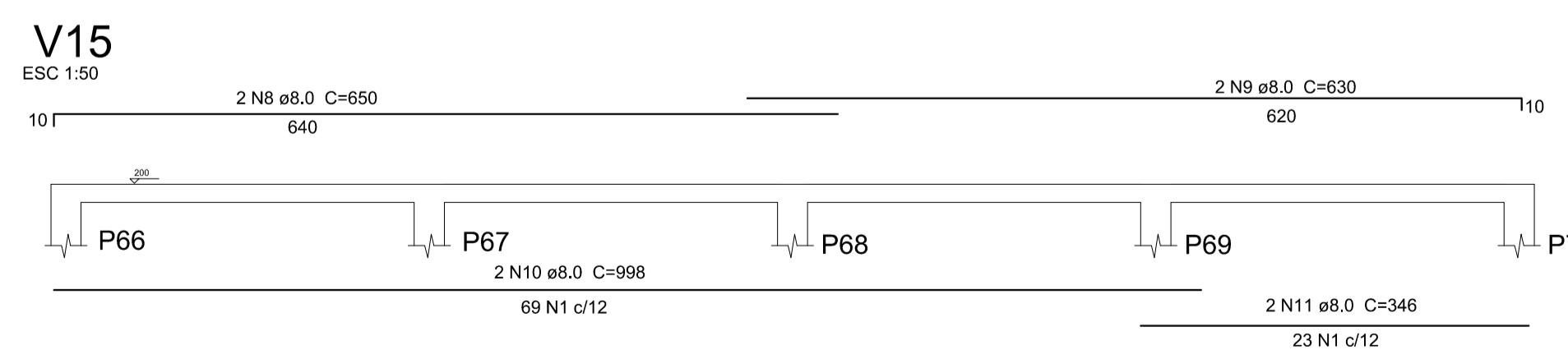
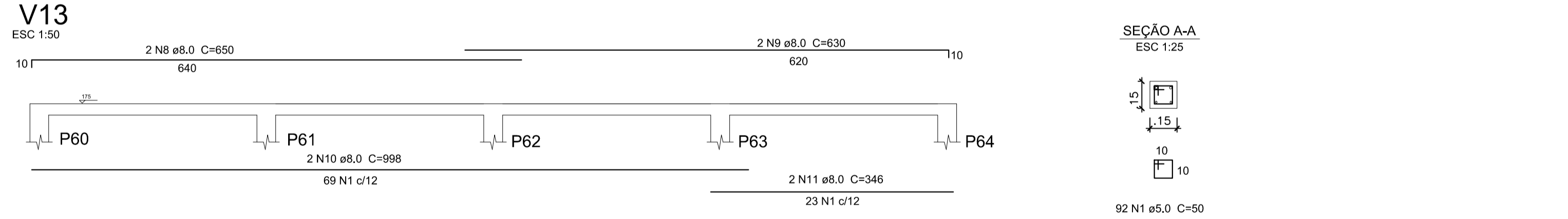
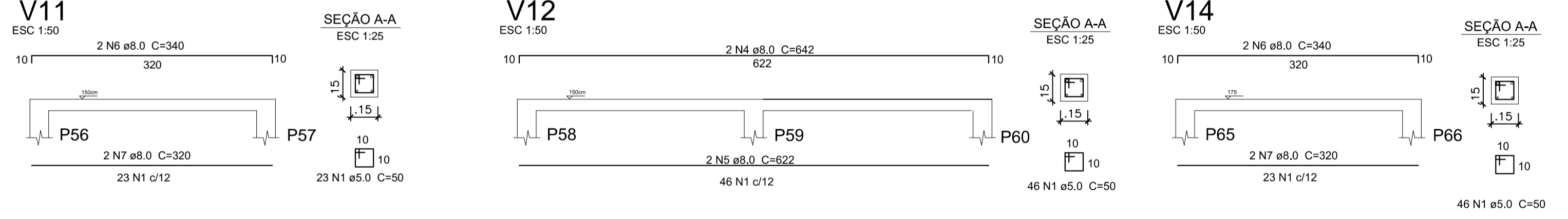
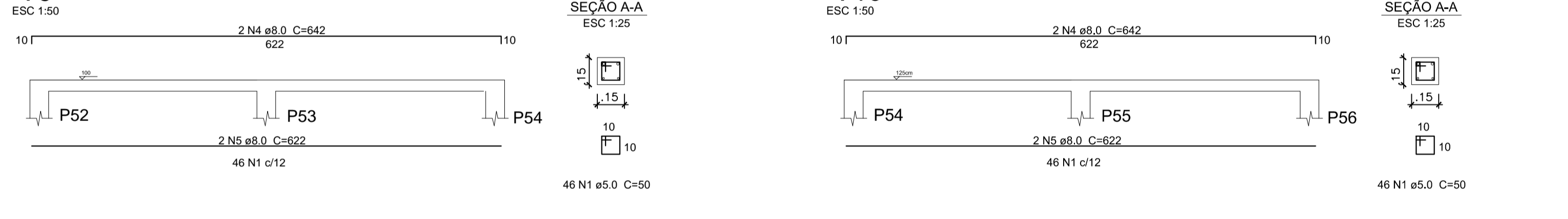
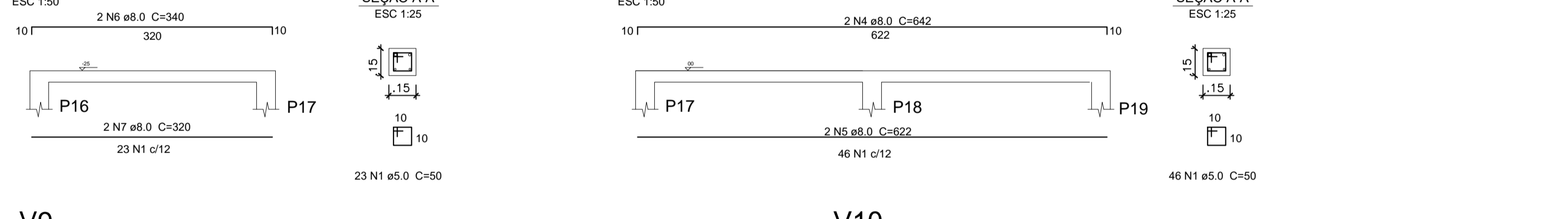
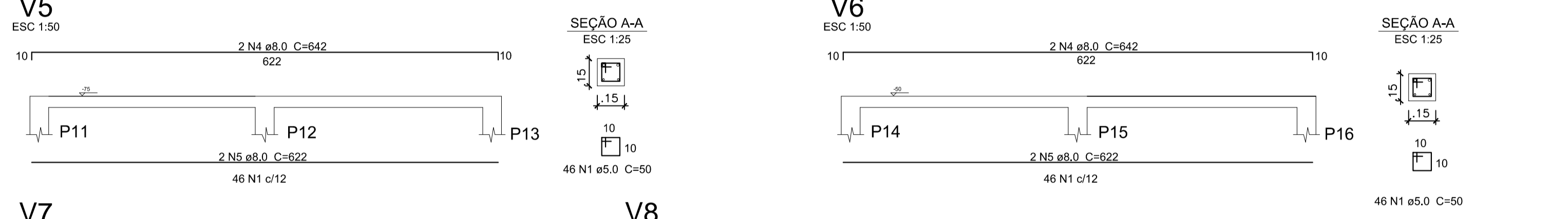
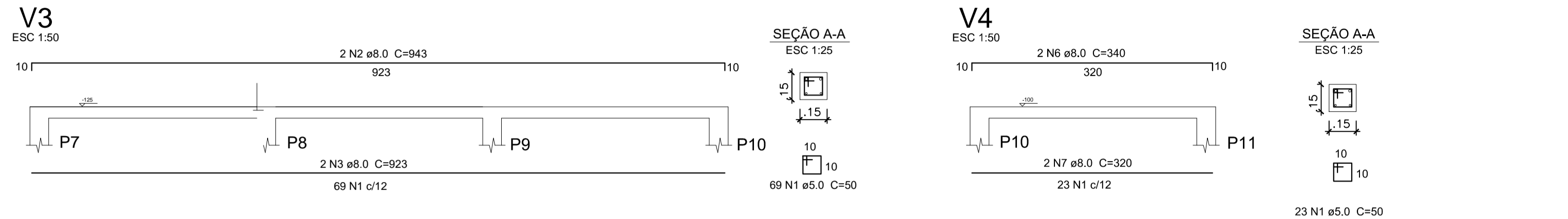
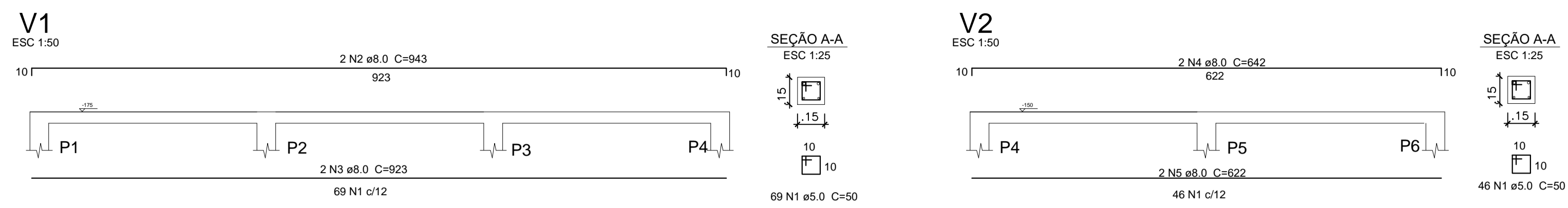
AÇO	N	DIAM	Q	UNIT (cm)	C.TOTAL (cm)
CA60	1	5.0	1586	50	79300
CA50	2	8.0	4	943	3772
	3	8.0	4	923	3692
	4	8.0	14	642	8988
	5	8.0	14	622	8708
	6	8.0	8	340	2720
	7	8.0	8	320	2560
	8	8.0	4	650	2600
	9	8.0	4	630	2520
	10	8.0	4	998	3992
	11	8.0	4	346	1384
	12	8.0	2	730	1460
	13	8.0	2	720	1440
	14	8.0	2	1030	2060
	15	8.0	2	375	750
	16	8.0	26	370	9620
	17	8.0	26	350	9100
	18	8.0	6	470	2820
	19	8.0	6	450	2700
	20	8.0	2	380	760
	21	8.0	2	360	720
	22	8.0	2	690	1380
	23	8.0	2	670	1340
	24	8.0	6	360	2160
	25	8.0	6	340	2040
	26	8.0	2	680	1360
	27	8.0	2	660	1320
	28	8.0	2	720	1440
	29	8.0	2	700	1400
	30	8.0	2	700	1400
	31	8.0	2	680	1360

Resumo do aço

AÇO	DIAM	C.TOTAL (m)	PESO (kg)	PESO + 10% (kg)
CA50	8.0	875,66	341,50	375,65
CA60	5.0	793,00	126,88	139,50
PESO TOTAL				
CA50			375,65	
CA60			139,50	



Forma do pavimento Nível 1



Resumo do aço

AÇO	DIAM	C.TOTAL (m)	PESO (kg)	PESO + 10 % (kg)
CA50	8.0	637,00	248,43	273,27
CA60	5.0	125,12	20,02	22,02
PESO TOTAL				
CA50		273,27		
CA60		22,02		

Vol. de concreto total (C-25) = 5,25m³
Área de forma total = 112m²

Relação do aço

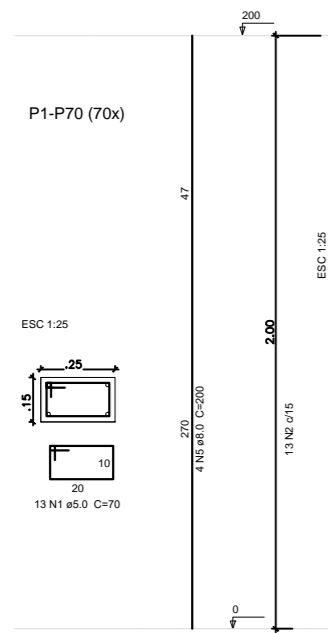
Nível 1 : 70xP

AÇO	N	DIAM	Q	UNIT (cm)	C.TOTAL (cm)
CA60	1	5.0	910	70	63700
CA50	2	8.0	280	200	56000

Relação do aço

Fundações: V1-V37

AÇO	N	DIAM	Q	UNIT (cm)	C.TOTAL (cm)
CA60	1	5.0	1474	50	73700
CA50	2	8.0	4	943	3772
	3	8.0	4	923	3692
	4	8.0	14	642	8988
	5	8.0	14	622	8708
	6	8.0	8	340	2720
	7	8.0	8	320	2560
	8	8.0	4	650	2600
	9	8.0	4	630	2520
	10	8.0	4	998	3992
	11	8.0	4	346	1384
	12	8.0	2	730	1460
	13	8.0	2	720	1440
	14	8.0	2	1030	2060
	15	8.0	2	375	750
	16	8.0	26	370	9620
	17	8.0	26	350	9100
	18	8.0	2	720	1440
	19	8.0	2	700	1400
	20	8.0	2	380	760
	21	8.0	2	360	720
	22	8.0	2	690	1380
	23	8.0	2	670	1340
	24	8.0	6	360	2160
	25	8.0	6	340	2040
	26	8.0	2	680	1360
	27	8.0	2	660	1320
	28	8.0	2	700	1400
	29	8.0	2	680	1360



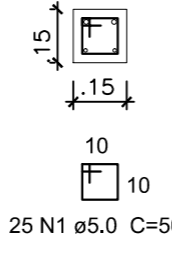
V23

ESC 1:50



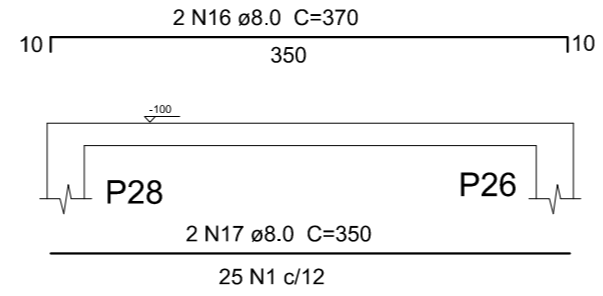
SEÇÃO A-A

ESC 1:25



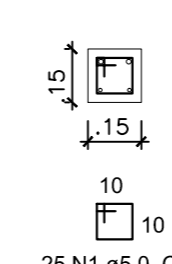
V24

ESC 1:50



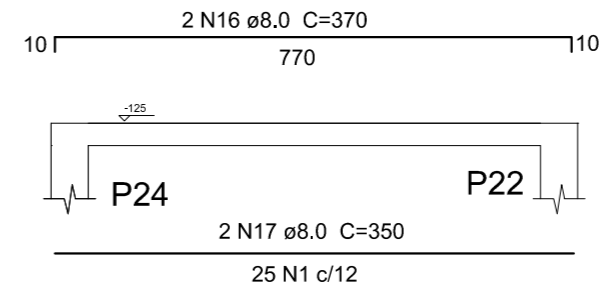
SEÇÃO A-A

ESC 1:25



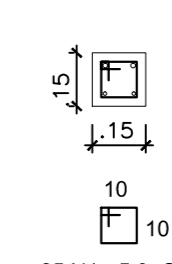
V25

ESC 1:50



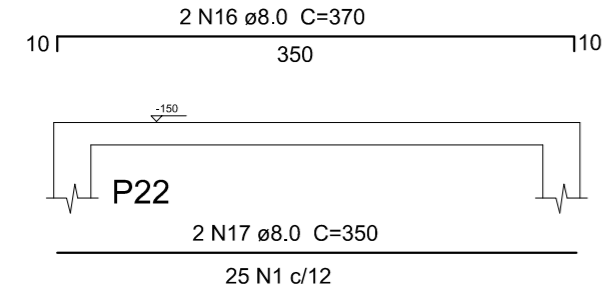
SEÇÃO A-A

ESC 1:25



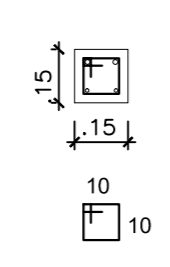
V26

ESC 1:50



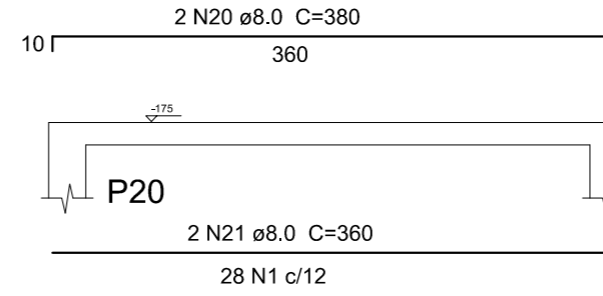
SEÇÃO A-A

ESC 1:25



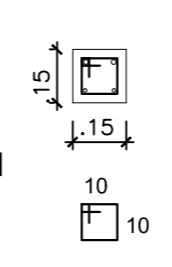
V27

ESC 1:50



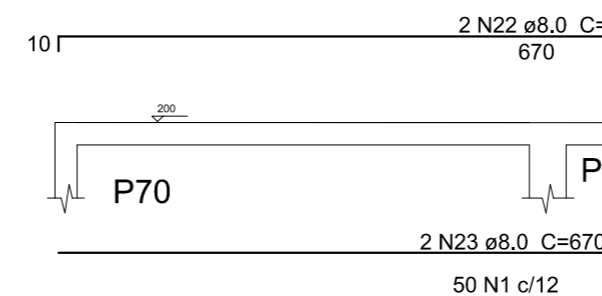
SEÇÃO A-A

ESC 1:25



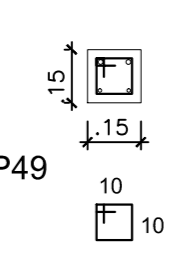
V28

ESC 1:50



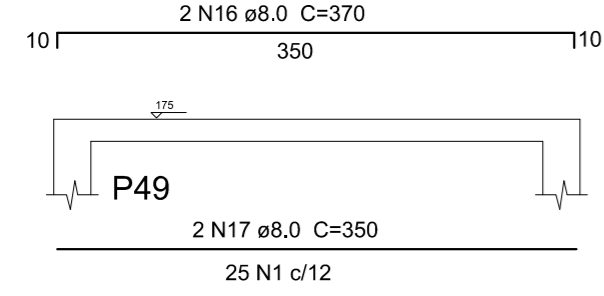
SEÇÃO A-A

ESC 1:25



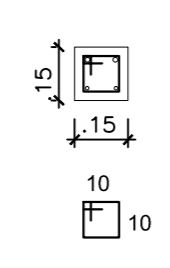
V29

ESC 1:50



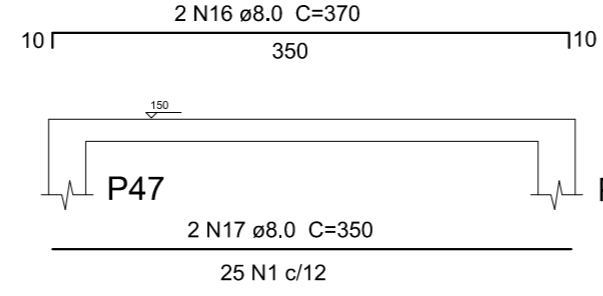
SEÇÃO A-A

ESC 1:25



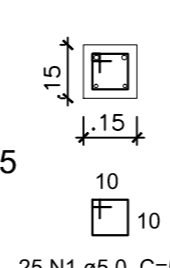
V30

ESC 1:50



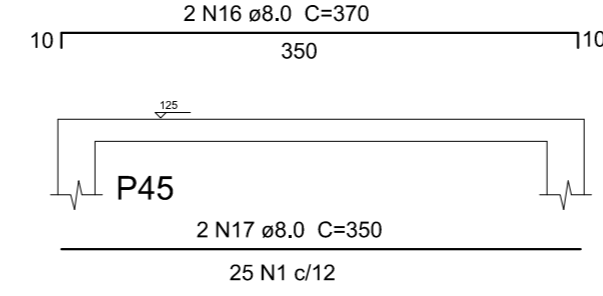
SEÇÃO A-A

ESC 1:25



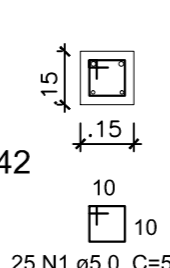
V31

ESC 1:50



SEÇÃO A-A

ESC 1:25



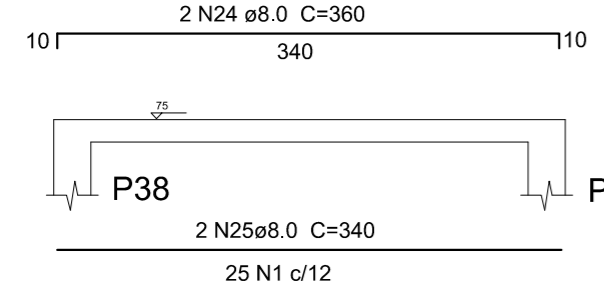
Resumo do aço

AÇO	DIAM	C.TOTAL (m)	PESO (kg)	PESO + 10 % (kg)
CA50	8.0	820,46	319,98	351,98
CA60	5.0	737,00	117,92	129,71
PESO TOTAL				
CA50		351,98		
CA60		129,71		

Vol. de concreto total (C-25) = 3,99 m³
Área de forma total = 50,67m²

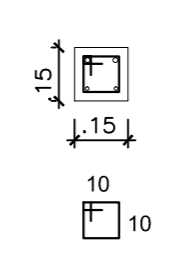
V33

ESC 1:50



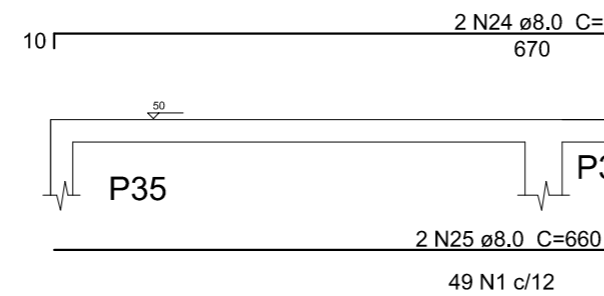
SEÇÃO A-A

ESC 1:25



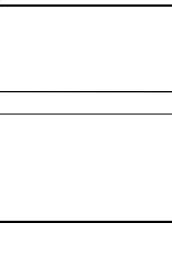
V34

ESC 1:50



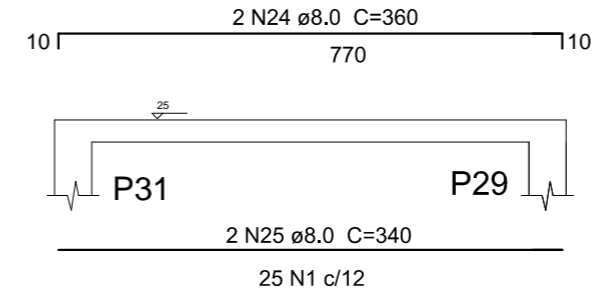
SEÇÃO A-A

ESC 1:25



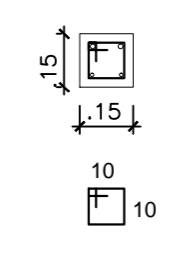
V35

ESC 1:50



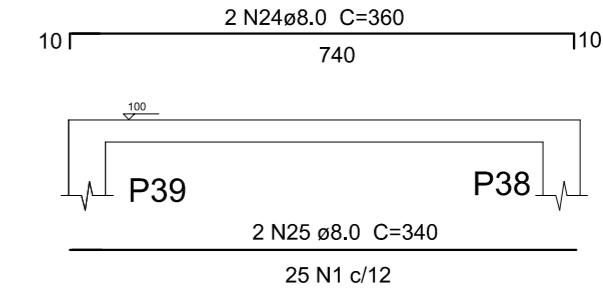
SEÇÃO A-A

ESC 1:25



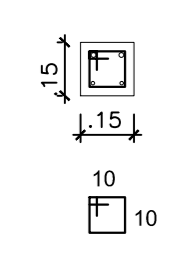
V32

ESC 1:50



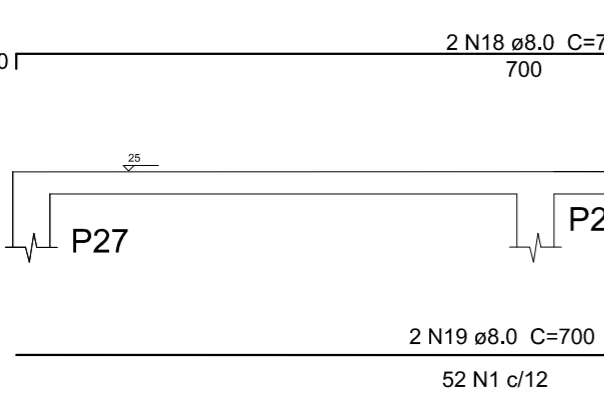
SEÇÃO A-A

ESC 1:25



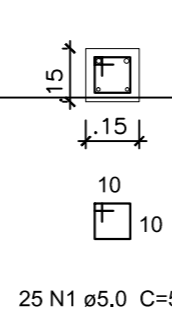
V36

ESC 1:50



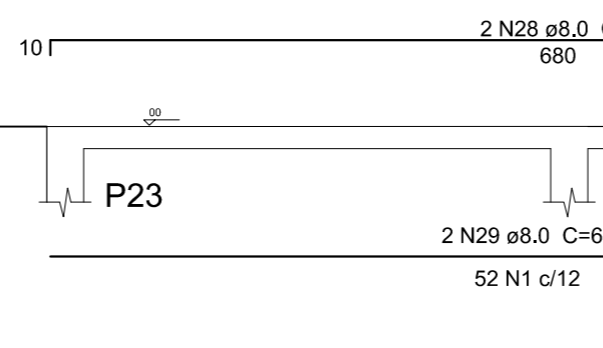
SEÇÃO A-A

ESC 1:25



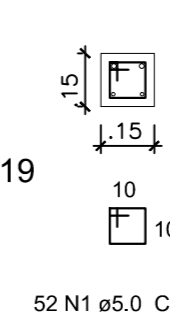
V37

ESC 1:50



SEÇÃO A-A

ESC 1:25



VANISA SOUSA
SILVA:88453626472
Assinado de forma digital por VANISA SOUSA SILVA:88453626472
Dados: 2023.10.21 19:52:01 -03'00'

PROPRIETÁRIO - CNPJ:
Prefeitura de Mato Grosso - 01.613.316/0001-11

CLIENTE / PROPRIETÁRIO:
Prefeitura Municipal de Mato Grosso/PB

PROJETO:
Muro para Garagem do município

ASSUNTO:
PROJETO ESTRUTURAL

ENDEREÇO DO EMPREENDIMENTO:
Rua projetada, Zona Urbana, Mato Grosso/PB