

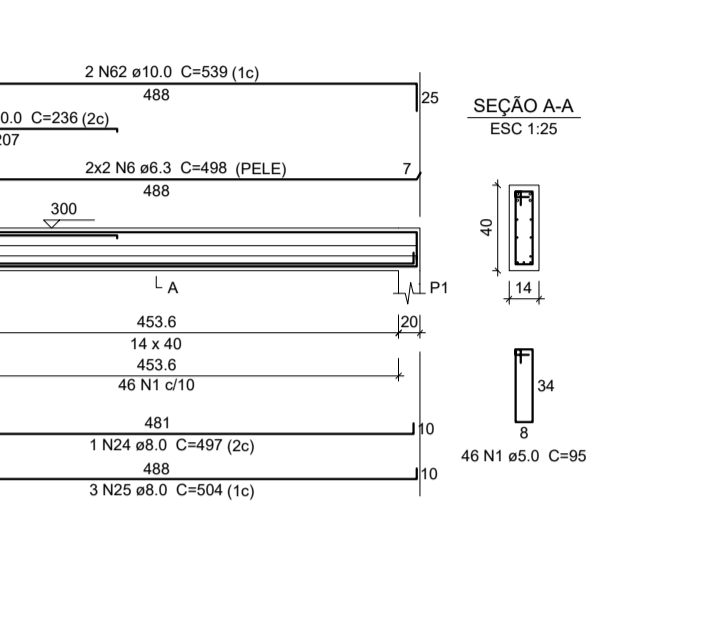
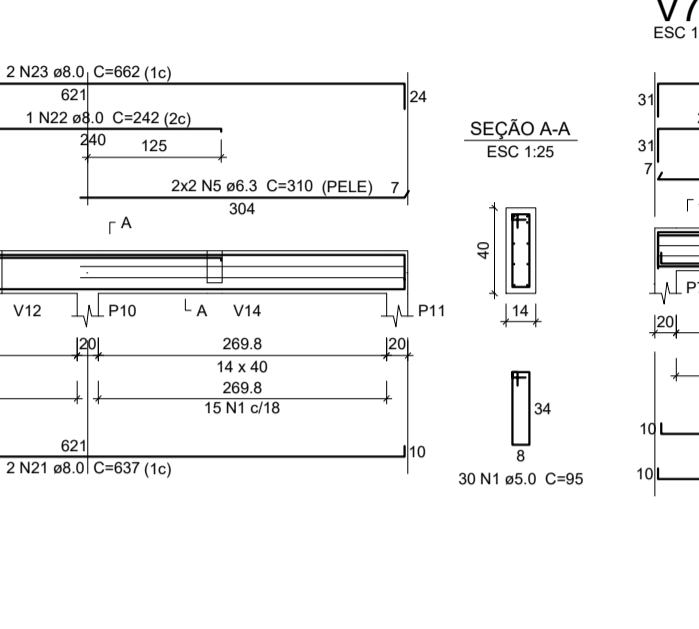
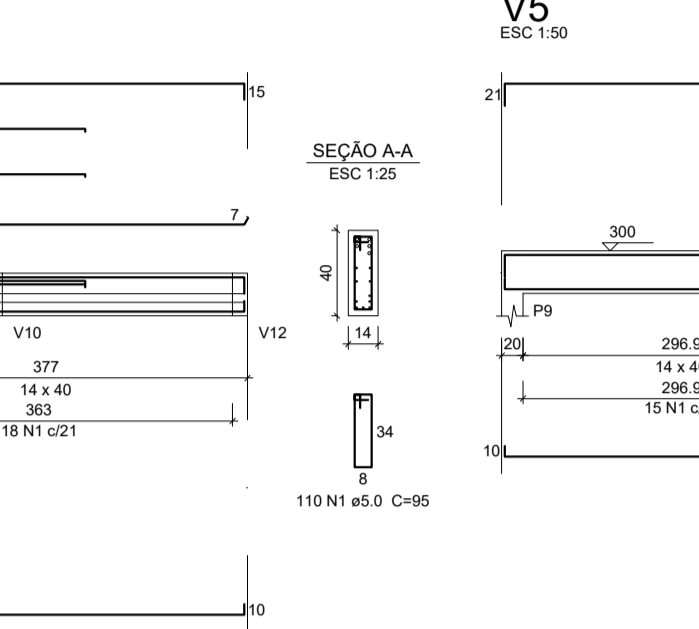
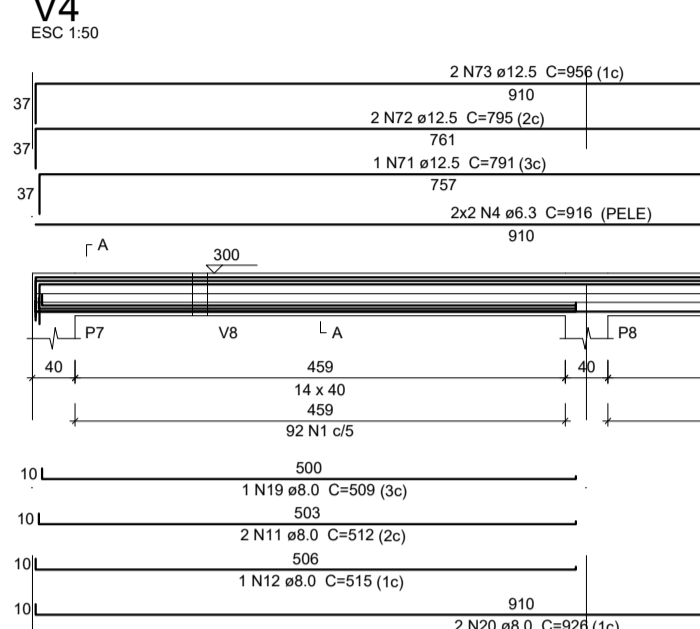
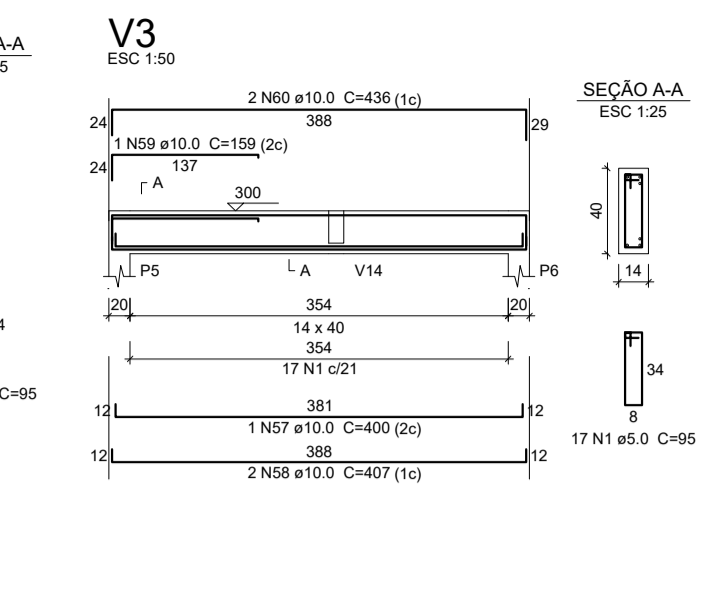
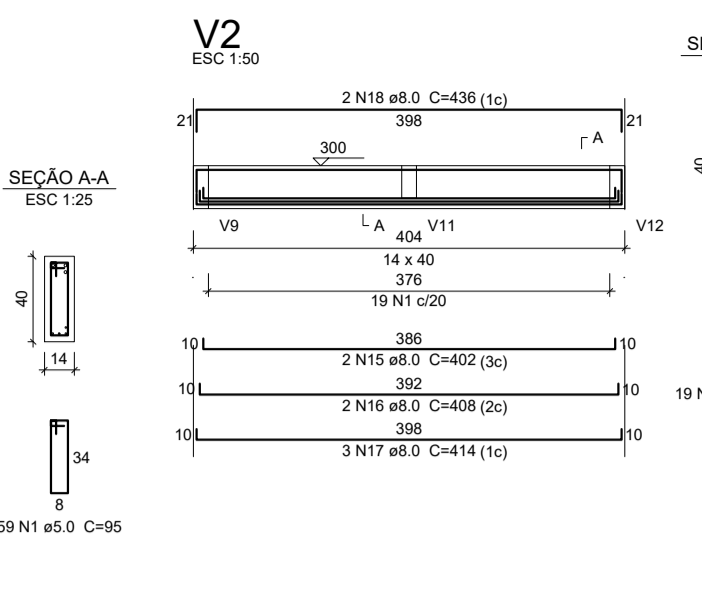
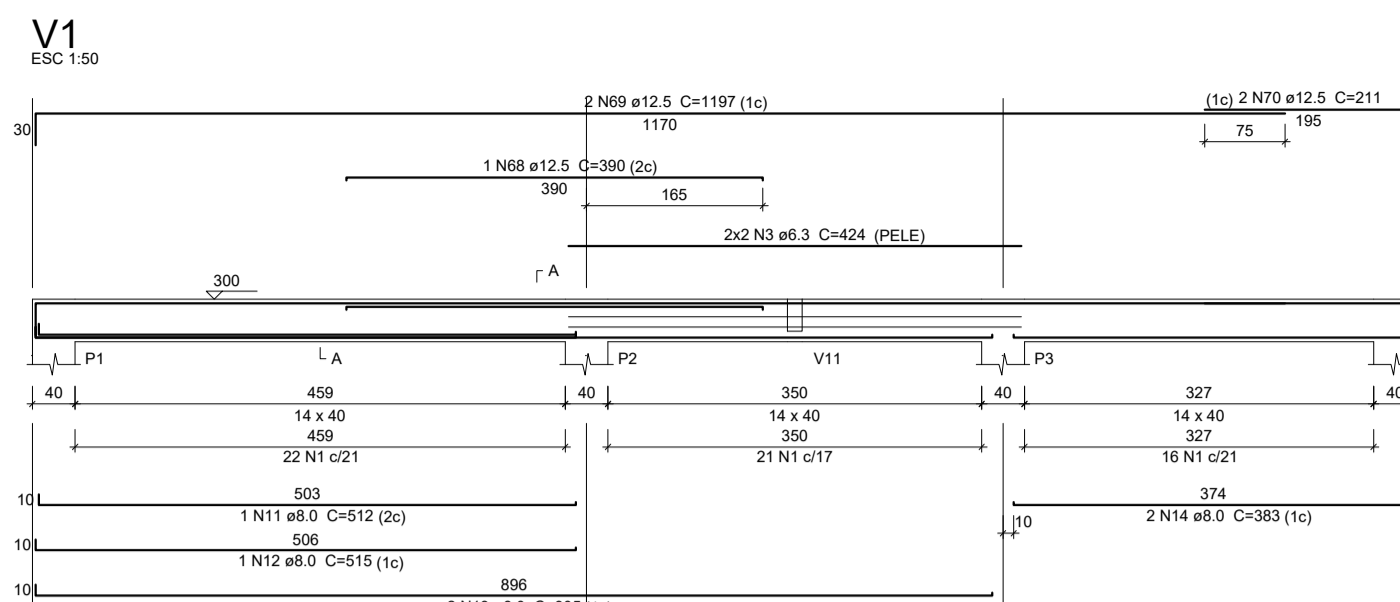
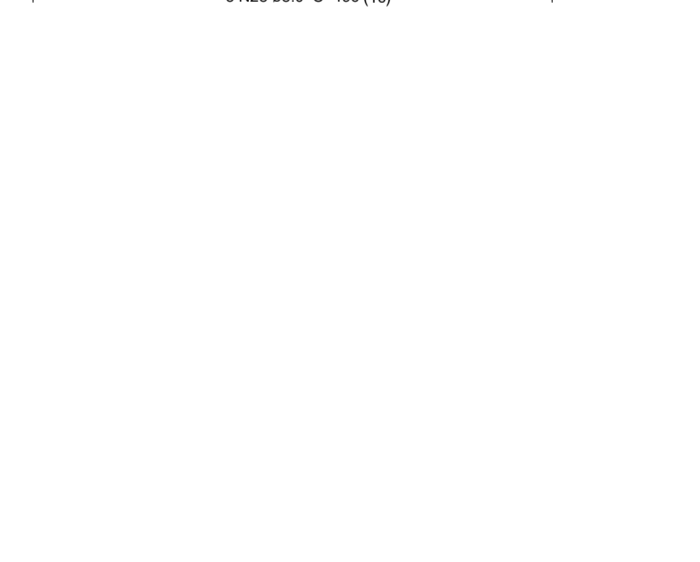
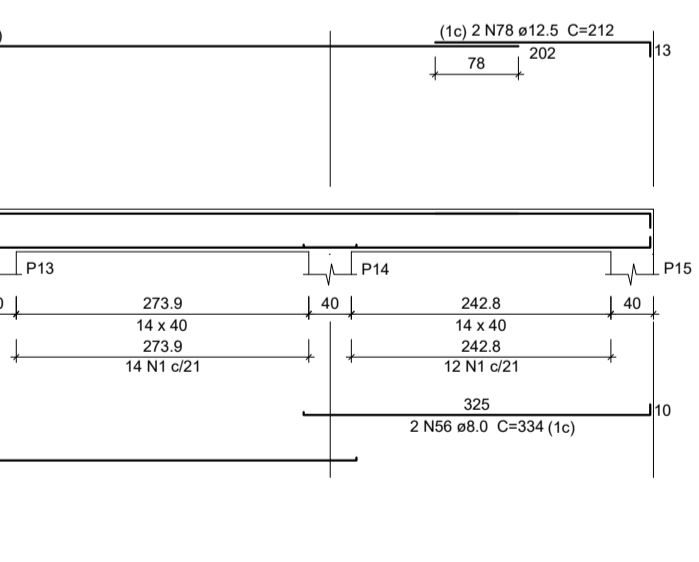
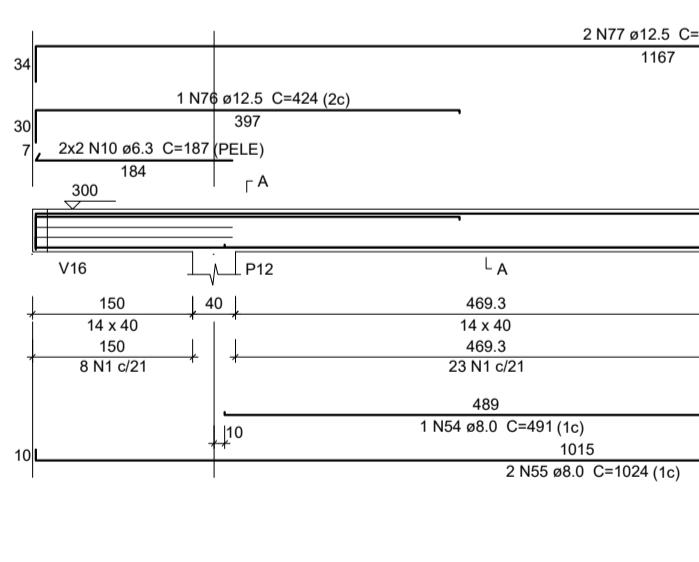
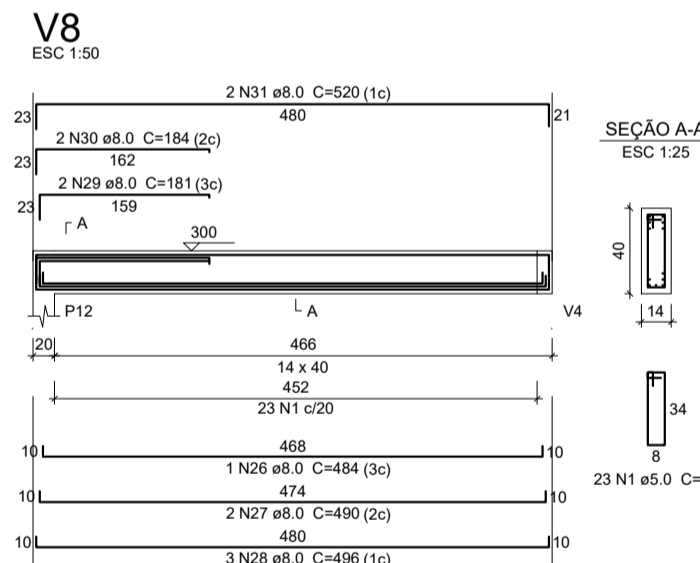
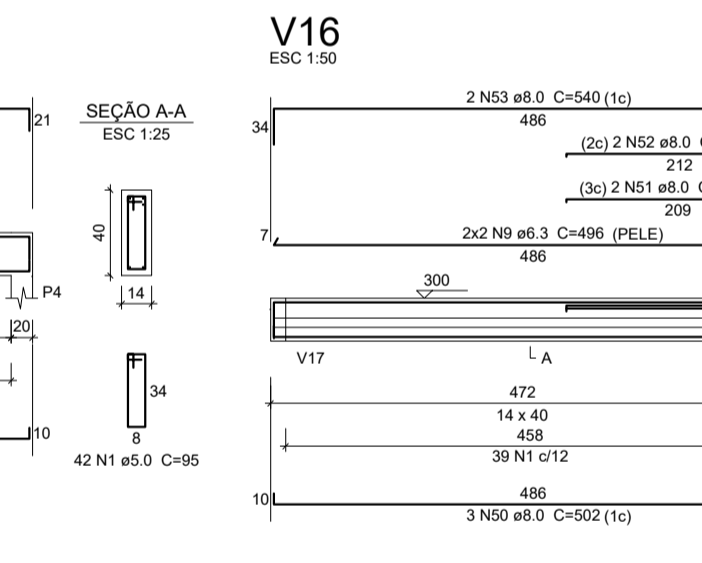
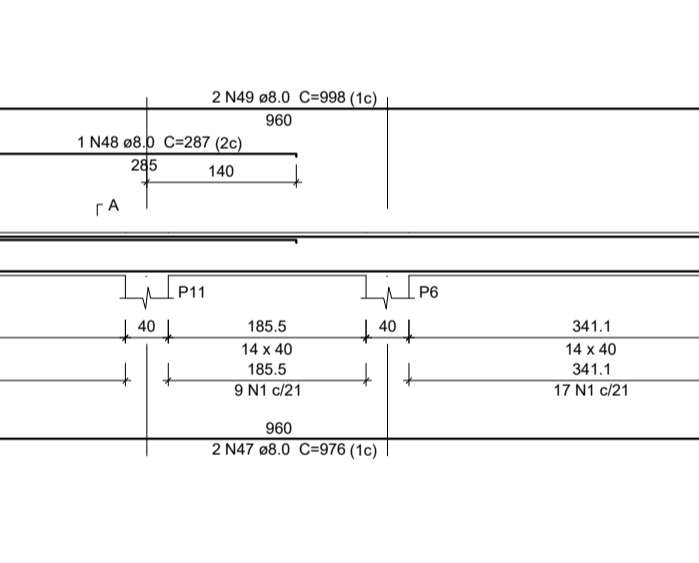
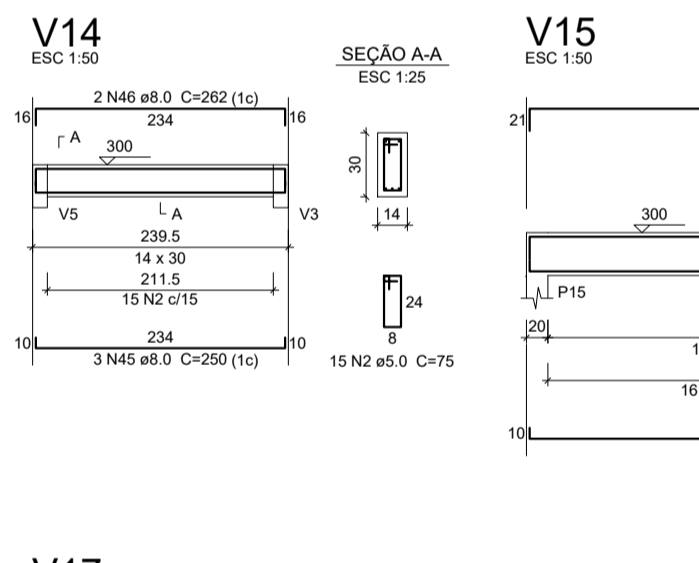
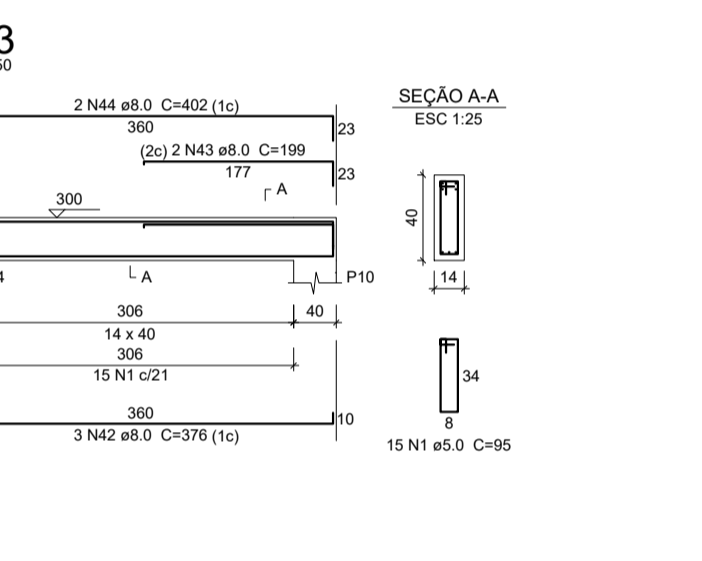
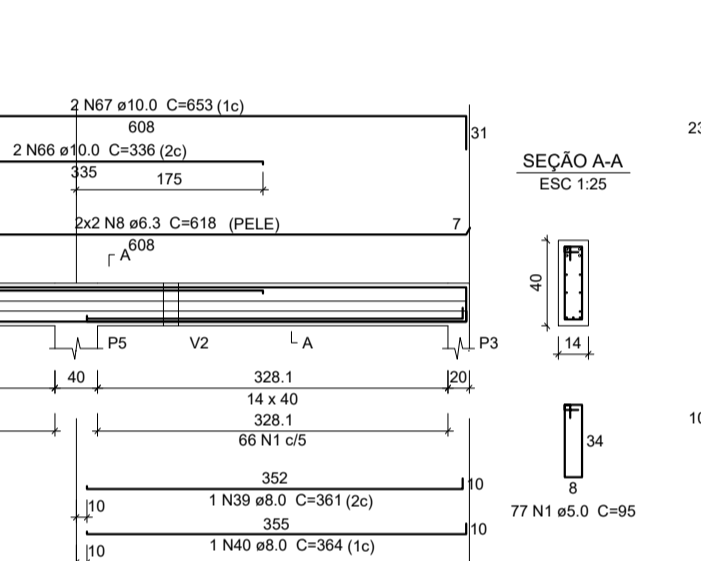
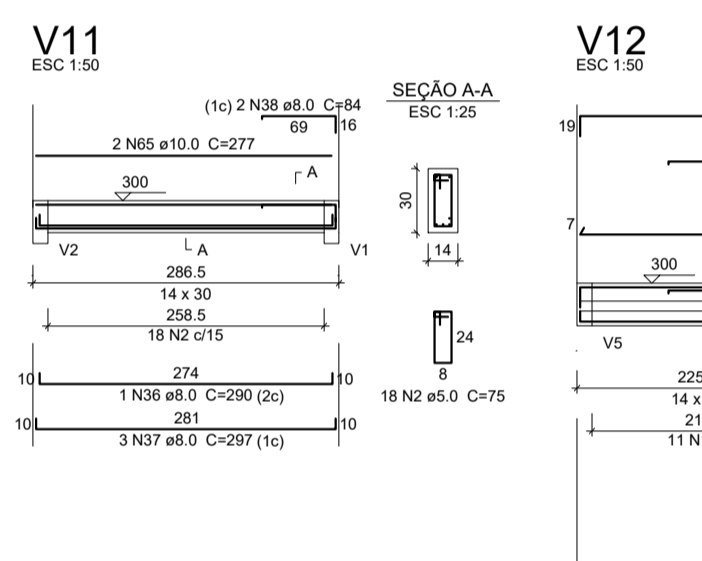
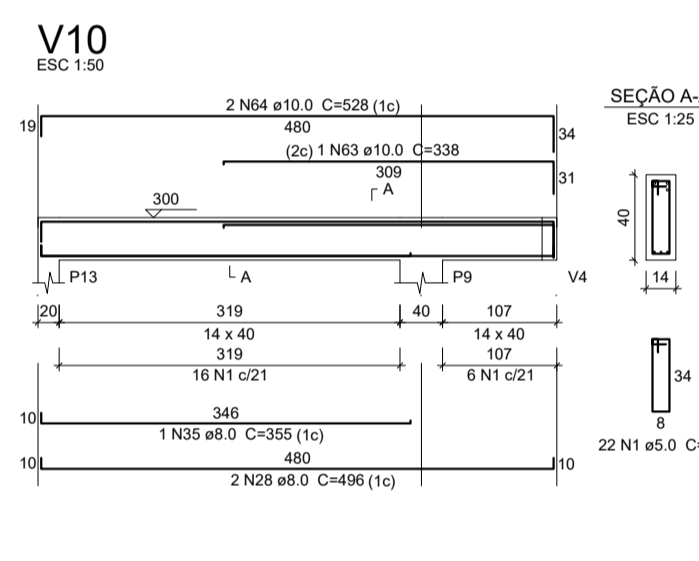
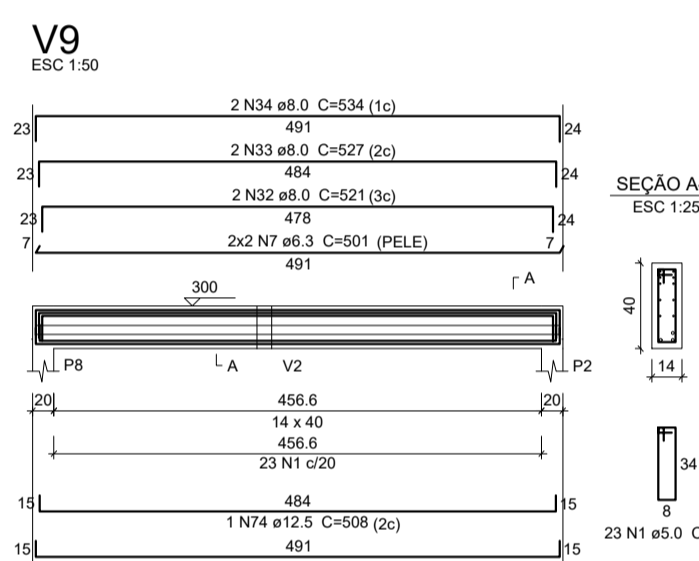
FORMA DO PAVIMENTO PLATIBANDA
Escala 1:50

Nome	Seção (cm)	Elevação (cm)	Nível (cm)
V1	14x40	0	300
V2	14x40	0	300
V3	14x40	0	300
V4	14x40	0	300
V5	14x40	0	300
V6	14x40	0	300
V7	14x40	0	300
V8	14x40	0	300
V9	14x40	0	300
V10	14x40	0	300
V11	14x40	0	300
V12	14x40	0	300
V13	14x40	0	300
V14	14x40	0	300
V15	14x40	0	300
V16	14x40	0	300
V17	14x40	0	300

Características dos materiais	
fck (kgf/cm²)	Ecs (kgf/cm²)
30	266384

Dimensão máxima de agregado = 19 mm

Nome	Seção (cm)	Elevação (cm)	Nível (cm)
P1	20x40	0	300
P2	20x40	0	300
P3	20x40	0	300
P4	20x40	0	300
P5	20x40	0	300
P6	20x40	0	300
P7	20x40	0	300
P8	20x40	0	300
P9	20x40	0	300
P10	20x40	0	300
P11	20x40	0	300
P12	20x40	0	300
P13	20x40	0	300
P14	20x40	0	300
P15	20x40	0	300



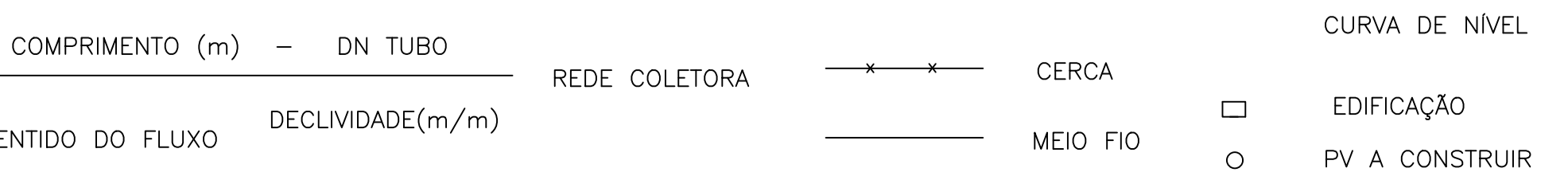
Relação do aço

AÇO	N	DIAM (mm)	QUANT	C (mm)	C TOTAL (cm)	C TOTAL (m)
CA50	1	5.0	579	95	55005	
CA50	2	5.0	33	75	2475	
CA50	3	6.3	4	424	1696	
CA50	4	6.3	4	916	3664	
CA50	5	6.3	4	310	1240	
CA50	6	6.3	4	498	1992	
CA50	7	6.3	4	501	2004	
CA50	8	6.3	4	618	2472	
CA50	9	6.3	4	496	1984	
CA50	10	6.3	4	187	748	
CA50	11	8.0	3	512	1536	
CA50	12	8.0	2	515	1030	
CA50	13	8.0	2	905	1810	
CA50	14	8.0	2	383	766	
CA50	15	8.0	2	402	804	
CA50	16	8.0	2	408	816	
CA50	17	8.0	3	414	1242	
CA50	18	8.0	4	484	1936	
CA50	19	8.0	1	509	509	
CA50	20	8.0	2	926	1852	
CA50	21	8.0	6	637	1274	
CA50	22	8.0	1	242	242	
CA50	23	8.0	2	662	1324	
CA50	24	8.0	1	497	497	
CA50	25	8.0	3	504	1512	
CA50	26	8.0	4	484	1936	
CA50	27	8.0	2	490	980	
CA50	28	8.0	5	496	2480	
CA50	29	8.0	2	181	362	
CA50	30	8.0	2	184	368	
CA50	31	8.0	2	500	1000	
CA50	32	8.0	2	521	1042	
CA50	33	8.0	2	527	1054	
CA50	34	8.0	2	34	68	
CA50	35	8.0	1	355	355	
CA50	36	8.0	1	299	299	
CA50	37	8.0	2	297	594	
CA50	38	8.0	2	84	168	
CA50	39	8.0	1	361	361	
CA50	40	8.0	1	364	364	
CA50	41	8.0	2	624	1248	
CA50	42	8.0	3	376	1128	
CA50	43	8.0	2	199	398	
CA50	44	8.0	2	402	804	
CA50	45	8.0	2	250	500	
CA50	46	8.0	2	262	524	
CA50	47	8.0	2	976	1952	
CA50	48	8.0	1	287	287	
CA50	49	8.0	2	998	1996	
CA50	50	8.0	3	502	1506	
CA50	51	8.0	2	232	464	
CA50	52	8.0	2	235	470	
CA50	53	8.0	2	440	880	
CA50	54	8.0	1	491	491	
CA50	55	8.0	2	1024	2048	
CA50	56	8.0	2	334	668	
CA50	57	10.0	1	400	400	
CA50	58	10.0	2	407	814	
CA50	59	10.0	1	159	159	
CA50	60	10.0	2	436	872	
CA50	61	10.0	2	236	472	
CA50	62	10.0	2	538	1076	
CA50	63	10.0	1	338	338	
CA50	64	10.0	2	528	1056	
CA50	65	10.0	2	277	554	
CA50	66	10.0	2	336	672	
CA50	67	10.0	2	653	1306	
CA50	68	12.5	1	390	390	
CA50	69	12.5	2	1197	2394	
CA50	70	12.5	2	211	422	
CA50	71	12.5	1	791	791	
CA50	72	12.5	2	795	1590	
CA50	73	12.5	2	956	1912	
CA50	74	12.5	1	608	608	
CA50	75	12.5	2	515	1030	
CA50	76	12.5	1	424	424	
CA50	77	12.5	2	1198	2396	
CA50	78	12.5	2	212	424	

Resumo do aço			
AÇO	DIAM (mm)	C TOTAL (m)	PESO + 10% (kg)
CA50	6.3	158	42.5
CA50	8.0	432.1	187.5
CA50	10.0	77.3	52.4
CA50	12.5	122.9	130.1
CA50	5.0	574.8	97.5
PESO TOTAL (kg)			
CA50	412.6		
CA50	97.5		

Volume de concreto (C-30) = 4.89 m³
Área de forma = 61.35 m²

CONVENÇÕES



PREFEITURA MUNICIPAL VERMELHO NOVO-MG



ESCALA INDICADAS

NÚMERO: FOLHA 06
FOLHA:

DATA: 30/09/2025
VISTO
APROV.

LOCAL: ZONA URBANA
APROV.
CONF.:

REQ. CLESIVS VINICIUS PINTO - PREFEITO MUNICIPAL
RT JOSÉ GILSON MOREIRA - ENG. CIVIL - CREA 247.171/D
DATA:

NÚMERO: FOLHA 06
FOLHA: