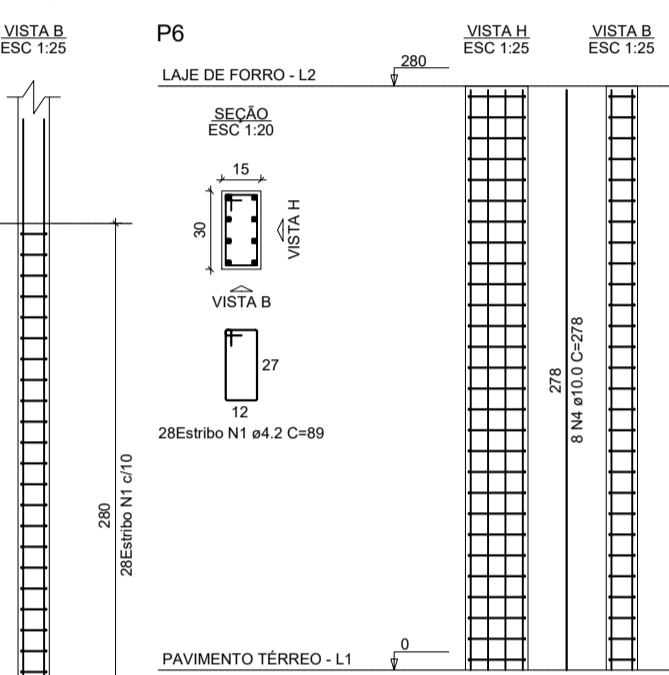
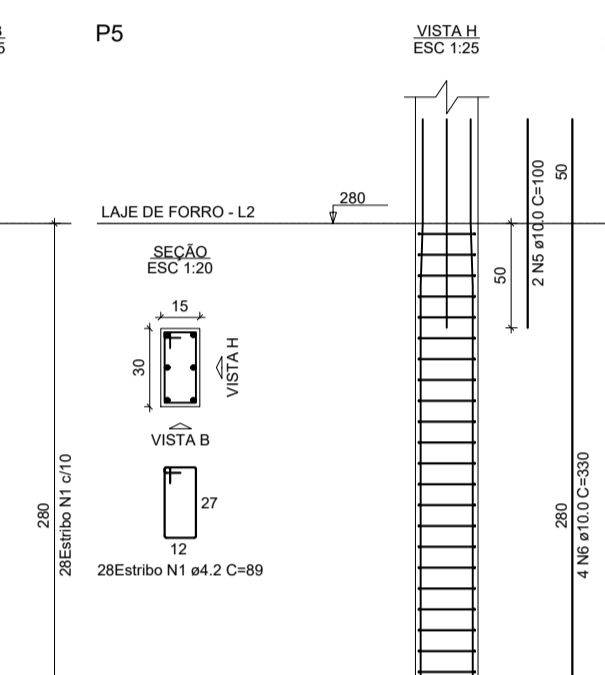
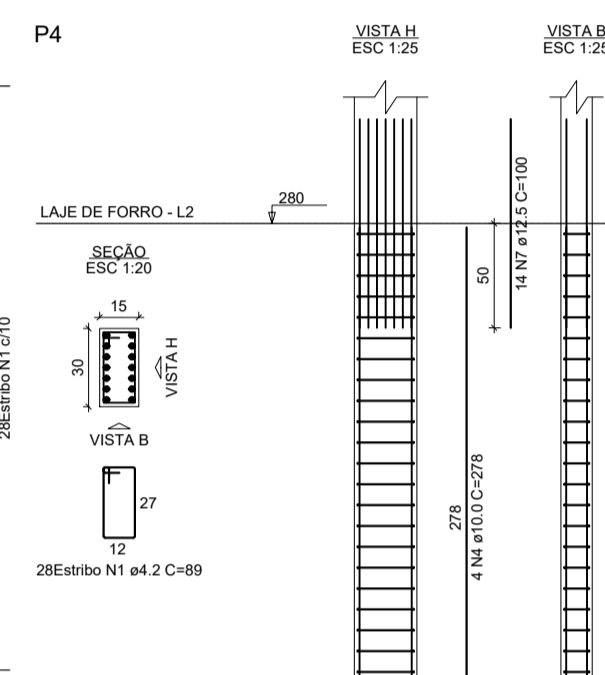
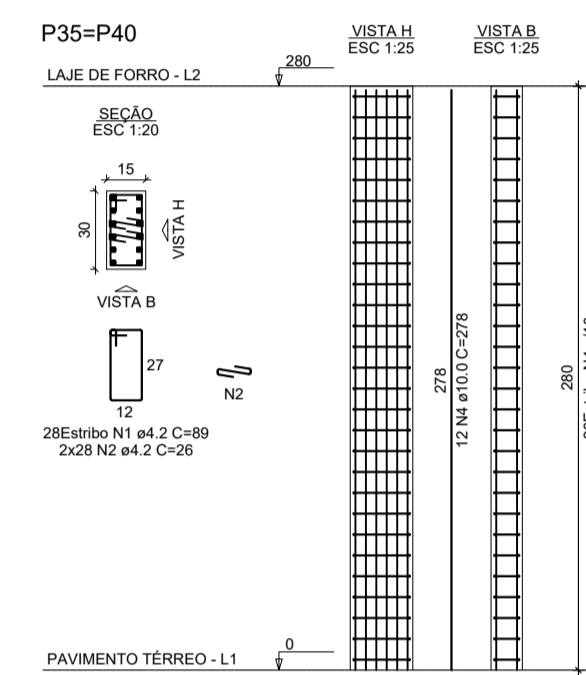
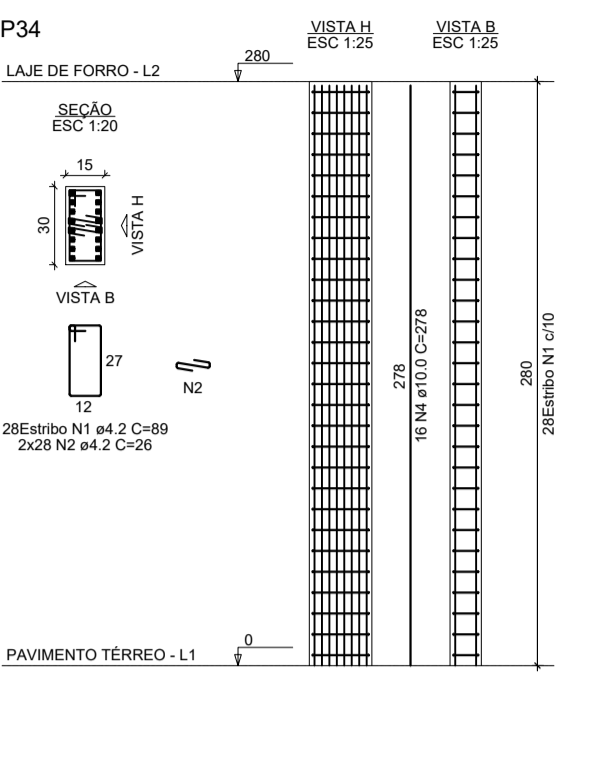
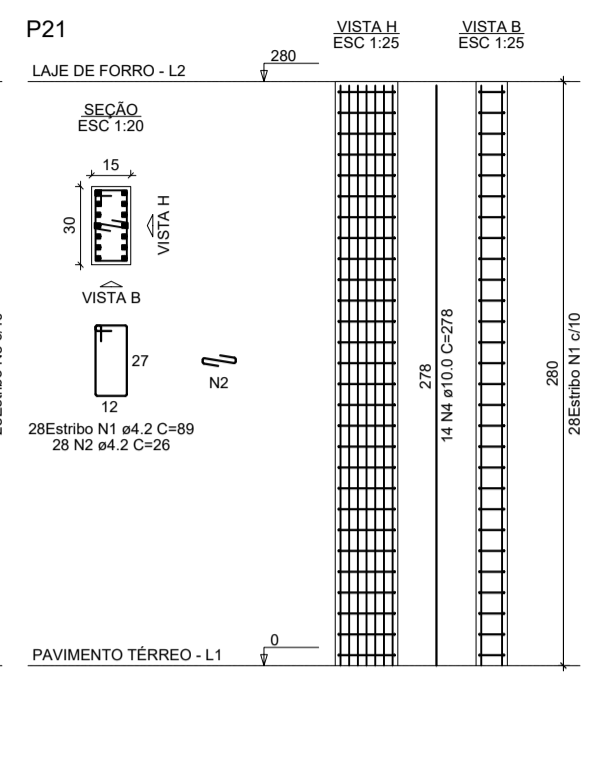
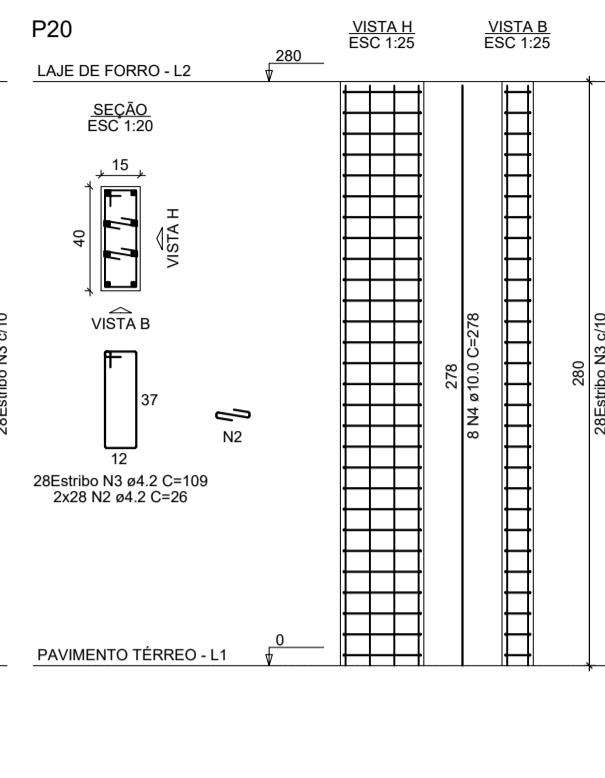
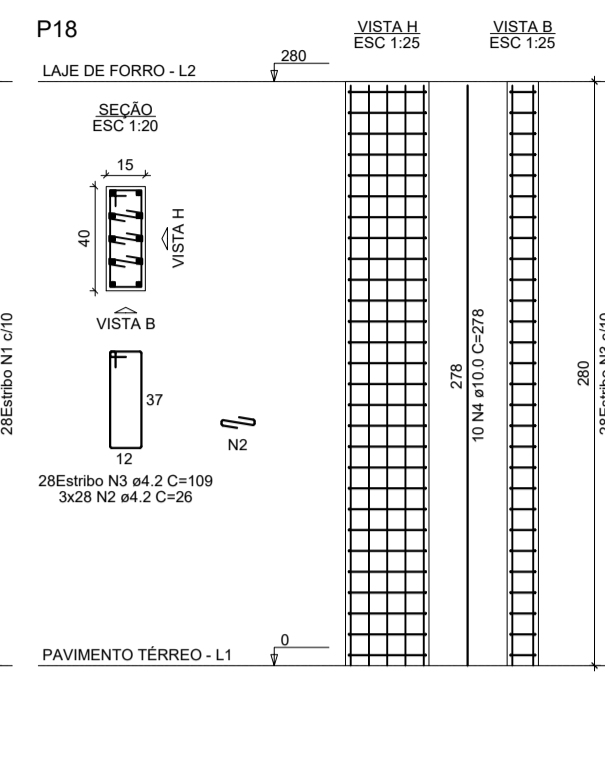
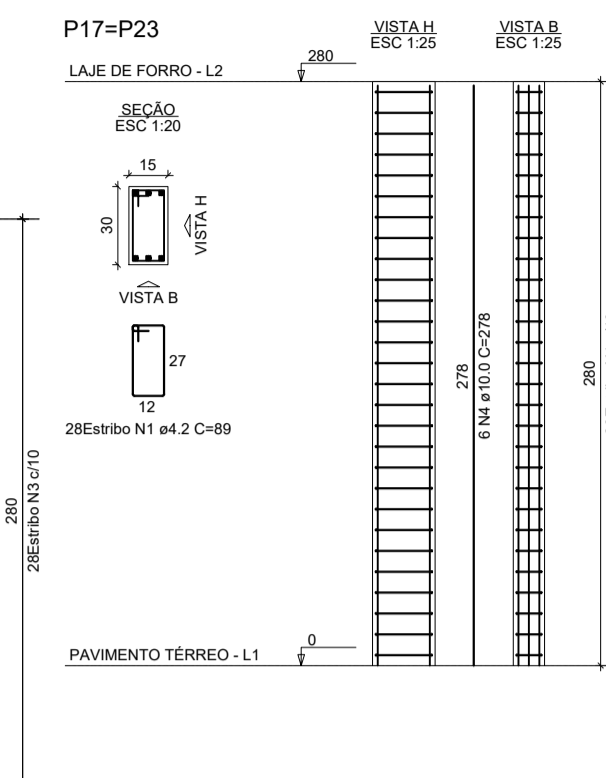
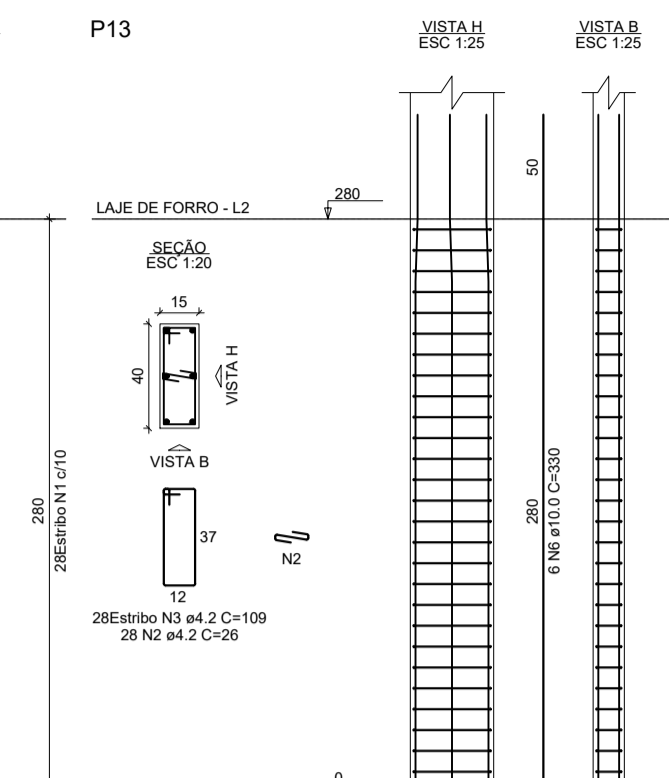
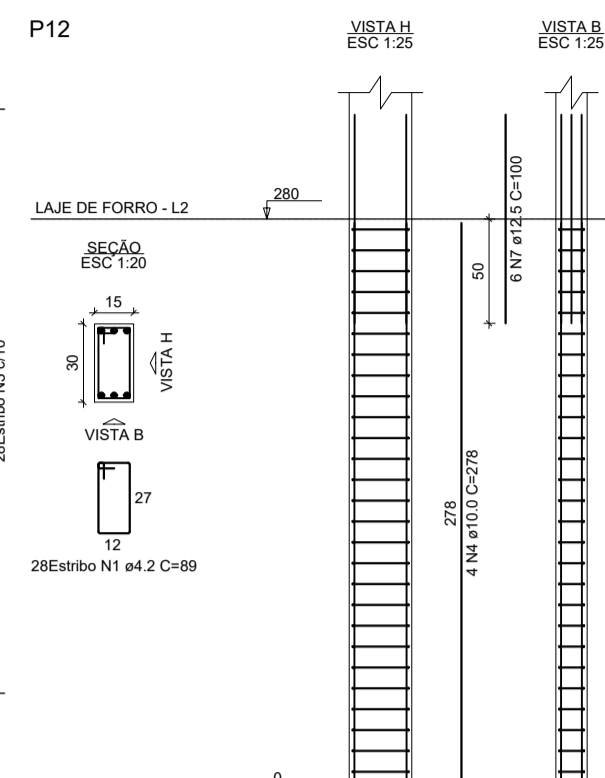
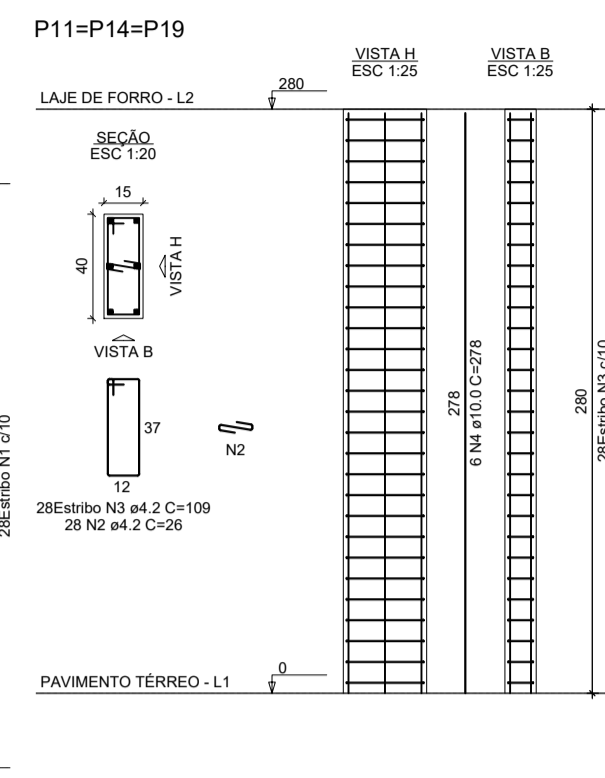
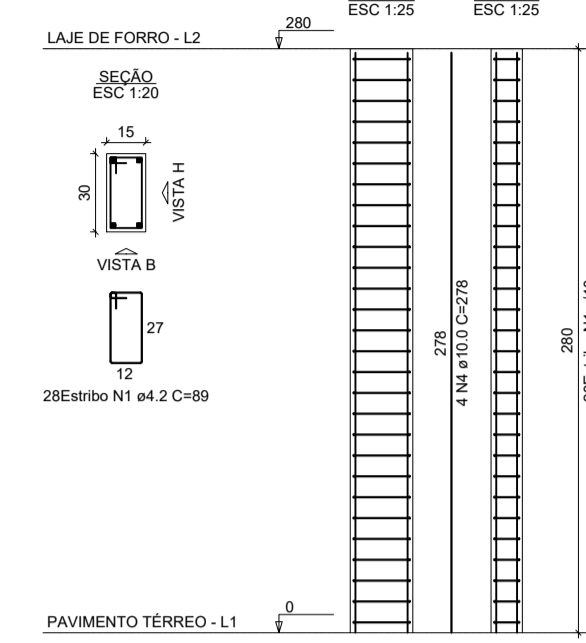


P1=P2=P3=P7=P8=P9=P10=P15=
 =P16=P22=P24=P25=P26=P27=
 =P29=P29=P30=P31=P32=P33=
 =P36=P37=P38=P39



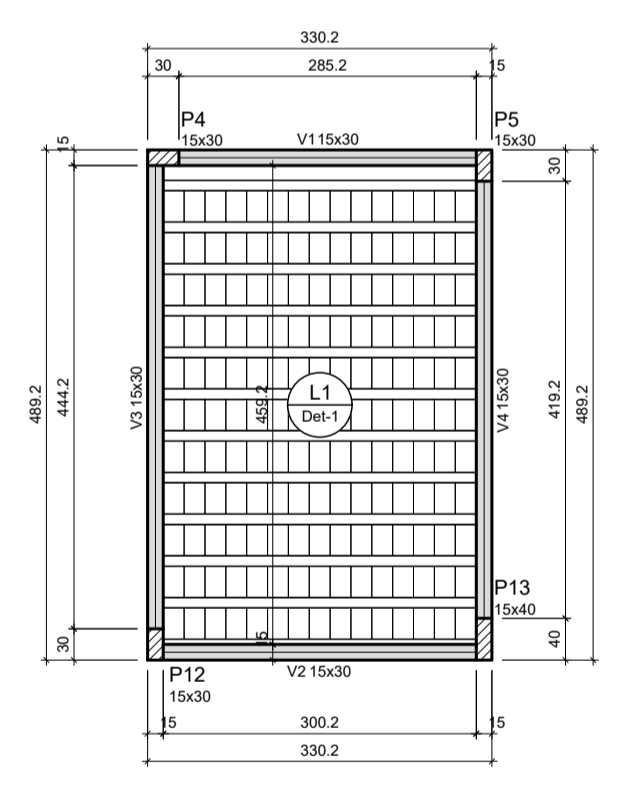
RELAÇÃO DO AÇO

CAO	N	DIAM (mm)	QUANT	C.UNIT (cm)	C.TOTAL (cm)
CAO1	4	4	20	100	2000
CAO2	4	4	20	100	2000
CAO3	4	4	20	100	2000
CAO4	4	4	20	100	2000
CAO5	4	4	20	100	2000
CAO6	4	4	20	100	2000

RESUMO DO AÇO

CAO	DIAM (mm)	C.TOTAL (cm)	QUANT + 10% (Barras)	PESO + 10% (kg)
CAO1	10.0	420.3	38	427.2
CAO2	12.5	70	2	21.2
CAO3	4.2	1146.8	106	137.2
PESO TOTAL (kg)				
CAO	448.4	Volume de concreto (C-35) = 5.29 m³		
CAO6	137.2	Área de forma = 104.16 m²		

Vigas SUPERIORES RESERVATÓRIO



Dados

Nome	Tipo	Altura (cm)	Elevação (cm)	Nível (cm)	Peso próprio (kg/m²)	Adicional (kg/m²)	Sobrecarga (kg/m²)	Localizada	Água
L1	Pré-moldada	13	0	380	283	182	200	-	300

Detalhe

Nome	Tipo	Seção	Dimensões (cm)	Quantidade
1	Lajotas cerâmicas	B830/20	8 30 20	165

Características dos materiais

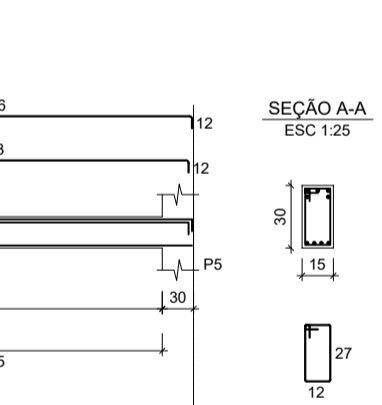
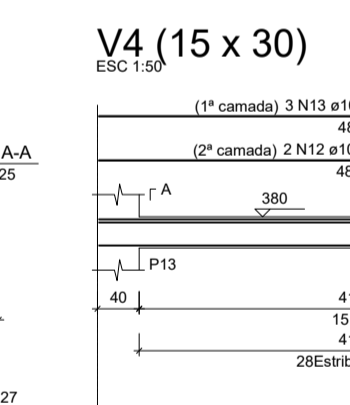
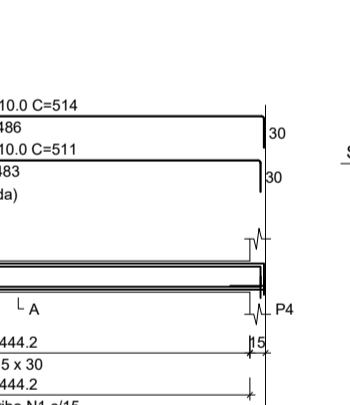
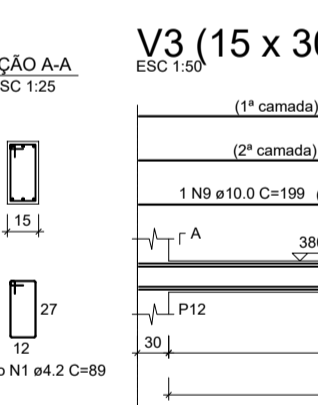
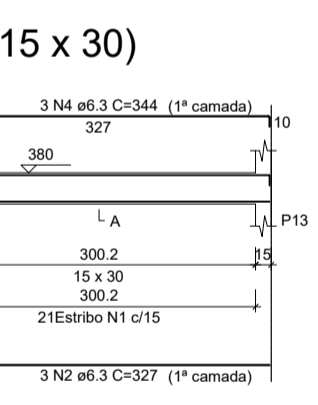
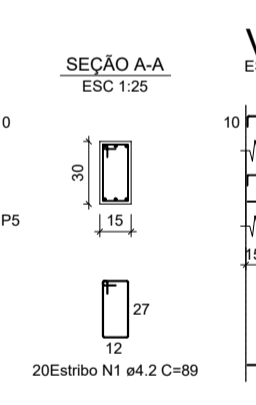
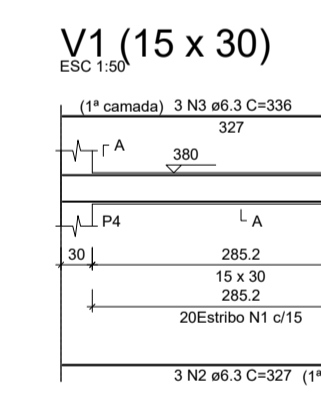
For	Esp
350	35/2835

Placas

Nome	Seção	Elevação (cm)	Nível (cm)
P4	15x30	0	380
P5	15x30	0	380
P12	15x30	0	380
P13	15x30	0	380

Legenda das vigas e paredes

- ▨ Pilar que passa
- ▨ Viga



RELAÇÃO DO AÇO

CAO	N	DIAM (mm)	QUANT	C.UNIT (cm)	C.TOTAL (cm)
CAO1	1	4.2	99	30	2971
CAO2	2	6.3	6	337	1962
CAO3	3	6.3	3	336	1008
CAO4	4	6.3	3	344	1032
CAO5	5	6.3	1	372	372
CAO6	6	8.0	1	491	491
CAO7	7	8.0	4	484	1936
CAO8	8	8.0	4	486	1944
CAO9	8	10.0	1	159	159
CAO10	10	10.0	2	511	1022
CAO11	10	10.0	3	514	1542
CAO12	12	10.0	2	493	986
CAO13	13	10.0	3	496	1488

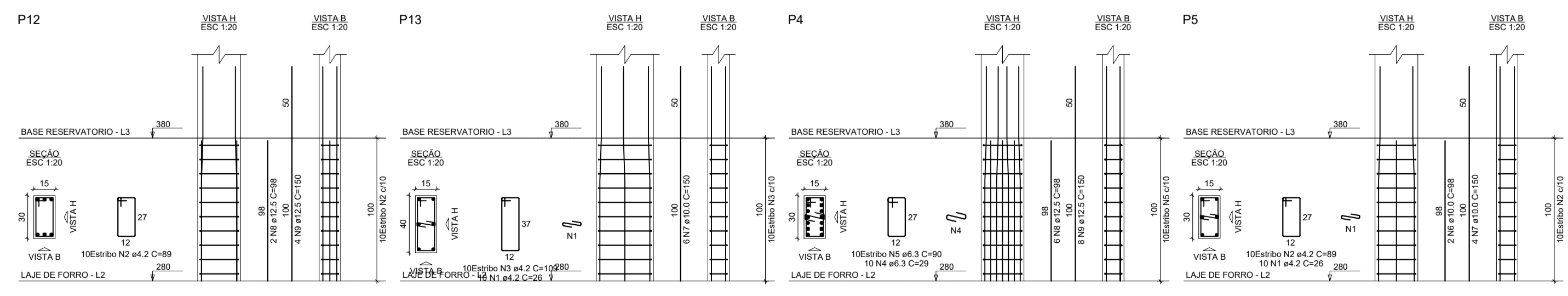
RESUMO DO AÇO

CAO	DIAM (mm)	C.TOTAL (cm)	QUANT + 10% (Barras)	PESO + 10% (kg)
CAO1	6.3	40.7	4	11
CAO2	8.0	44.1	4	18.1
CAO3	10.0	52.4	5	35.5
CAO4	4.2	88.1	8	10.5
PESO TOTAL (kg)				
CAO	65.6	Volume de concreto (C-35) = 0.65 m³		
CAO6	10.5	Área de forma = 8.99 m²		

Forma do pavimento BASE RESERVATÓRIO

escala 1:100

Pilares RESERVATÓRIO



RELAÇÃO DO AÇO

CAO	N	DIAM (mm)	QUANT	C.UNIT (cm)	C.TOTAL (cm)
CAO1	1	4.2	20	26	520
CAO2	3	4.2	20	89	1780
CAO3	4	4.2	10	109	1090
CAO4	5	6.3	10	90	900
CAO5	6	10.0	2	96	196
CAO6	7	10.0	10	150	1500
CAO7	8	12.5	8	96	768
CAO8	9	12.5	12	150	1800

RESUMO DO AÇO

CAO	DIAM (mm)	C.TOTAL (cm)	QUANT + 10% (Barras)	PESO + 10% (kg)
CAO1	6.3	11.9	17	11.5
CAO2	8.0	20.8	2	27.4
CAO3	4.2	33.9	4	4.1
PESO TOTAL (kg)				
CAO	42.1	Volume de concreto (C-35) = 0.20 m³		
CAO6	4.1	Área de forma = 3.80 m²		

CENTRO DIA
 RUA AVELINO SILVÉRIO SCHNEIDER, LOTE Nº223 DA QUADRA Nº306 –LOTEAMENTO MERCOSUL II
 BAIRRO PROGRESSO – MUNICÍPIO DE TIHO HUGO – RS

PROPRIETÁRIO: PREFEITURA MUNICIPAL DE TIHO HUGO

RESPONSÁVEL TÉCNICO: JEAN BERARDI MANICA
 ENGº CIVIL CREA-RS 133.545-D

DESENHO: Jean Berardi Manica

ÁREA: 338.95m²

ESCALA: INDICADA

PROJETO: DETALHAMENTO PAVIMENTO LAJE DE FORRO

DATA: OUTUBRO 2025

PRANCHA: 18