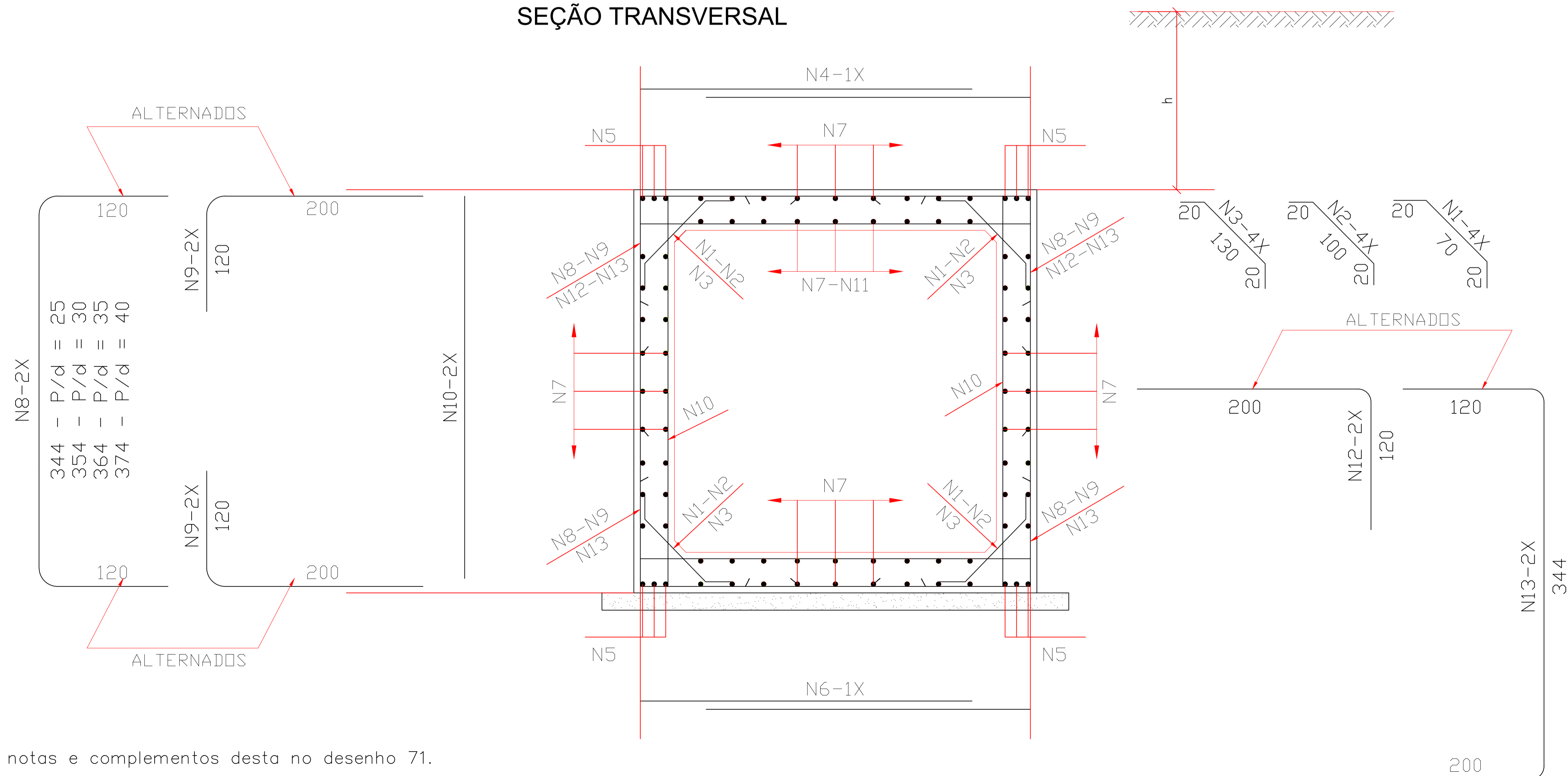


TABELA DAS ARMADURAS (POR METRO DE GALERIA)

0 ≤ h ≤ 100					100 ≤ h ≤ 250					250 ≤ h ≤ 500					500 ≤ h ≤ 750					750 ≤ h ≤ 1000					1000 ≤ h ≤ 1250					1250 ≤ h ≤ 1500				
fs ≥ 0,12 MPa					fs ≥ 0,12 MPa					fs ≥ 0,17 MPa					fs ≥ 0,22 MPa					fs ≥ 0,27 MPa					fs ≥ 0,31 MPa					fs ≥ 0,37 MPa				
Nº	Ø	Q	COMP.	ESP.	Nº	Ø	Q	COMP.	ESP.	Nº	Ø	Q	COMP.	ESP.	Nº	Ø	Q	COMP.	ESP.	Nº	Ø	Q	COMP.	ESP.	Nº	Ø	Q	COMP.	ESP.	Nº	Ø	Q	COMP.	ESP.
1	6,3	20	110	c/20	1	6,3	20	110	c/20	1	---	---	---	---	1	---	---	---	---	1	---	---	---	---	1	---	---	---	---	1	---	---	---	---
2	---	---	---	---	2	---	---	---	---	2	8,0	16	140	c/25	2	8,0	16	140	c/25	2	8,0	20	140	c/20	2	8,0	20	140	c/20	2	---	---	---	---
3	---	---	---	---	3	---	---	---	---	3	---	---	---	---	3	---	---	---	---	3	---	---	---	---	3	---	---	---	---	3	10,0	16	170	c/25
4	12,5	6	310	c/15	4	12,5	6	310	c/15	4	12,5	9	310	c/11	4	16,0	8	310	c/12	4	16,0	9	320	c/11	4	20,0	7	320	c/13	4	20,0	7	320	c/13
5	16,0	12	CORR.	---	5	16,0	12	CORR.	---	5	16,0	12	CORR.	---	5	16,0	12	CORR.	---	5	16,0	12	CORR.	---	5	16,0	12	CORR.	---	5	16,0	12	CORR.	---
6	12,5	6	310	c/15	6	12,5	7	310	c/13	6	12,5	10	310	c/10	6	16,0	9	310	c/11	6	16,0	10	320	c/10	6	20,0	8	320	c/12	6	20,0	8	320	c/12
7	6,3	98	CORR.	c/20	7	6,3	112	CORR.	c/20	7	8,0	88	CORR.	c/25	7	8,0	112	CORR.	c/20	7	8,0	112	CORR.	c/20	7	8,0	112	CORR.	c/20	7	10,0	88	CORR.	c/25
8	---	---	---	---	8	12,5	6	584	c/40	8	12,5	8	594	c/30	8	12,5	10	594	c/22	8	12,5	10	604	c/20	8	16,0	8	604	c/30	8	16,0	8	614	c/24
9	---	---	---	---	9	12,5	12	320	c/40	9	12,5	16	320	c/30	9	12,5	20	320	c/22	9	12,5	20	320	c/20	9	16,0	16	320	c/30	9	16,0	16	320	c/24
10	6,3	16	345	c/12	10	6,3	16	345	c/12	10	8,0	10	355	c/20	10	8,0	10	355	c/20	10	8,0	16	365	c/12	10	8,0	16	365	c/12	10	10,0	12	375	c/15
11	6,3	29	CORR.	c/10	11	---	---	---	---	11	---	---	---	---	11	---	---	---	---	11	---	---	---	---	11	---	---	---	---	11	---	---	---	---
12	12,5	8	320	c/24	12	---	---	---	---	12	---	---	---	---	12	---	---	---	---	12	---	---	---	---	12	---	---	---	---	12	---	---	---	---
13	12,5	8	664	c/24	13	---	---	---	---	13	---	---	---	---	13	---	---	---	---	13	---	---	---	---	13	---	---	---	---	13	---	---	---	---

RESUMO			RESUMO			RESUMO			RESUMO			RESUMO			RESUMO					
Ø	Kg/m	PESO (Kg)	Ø	Kg/m	PESO (Kg)	Ø	Kg/m	PESO (Kg)	Ø	Kg/m	PESO (Kg)	Ø	Kg/m	PESO (Kg)	Ø	Kg/m	PESO (Kg)			
6,3	0,252	55	6,3	0,252	51	8,0	0,393	61	8,0	0,393	72	8,0	0,393	83	8,0	0,393	83	10,0	0,624	105
12,5	0,988	115	12,5	0,988	113	12,5	0,988	156	12,5	0,988	122	12,5	0,988	123	16,0	1,570	117	16,0	1,570	179
16,0	1,570	21	16,0	1,570	21	16,0	1,570	21	16,0	1,570	104	16,0	1,570	117	20,0	2,480	119	20,0	2,480	119
TOTAL		191Kg	TOTAL		185Kg	TOTAL		238Kg	TOTAL		298Kg	TOTAL		323Kg	TOTAL		379Kg	TOTAL		403Kg

SEÇÃO TRANSVERSAL



PROJETO GALERIA 3,00 X 3,00
Armaduras

Galeria bscc 3,00x3,00
OBRA:
Prefeitura Municipal de Rolim de Moura
PROPRIETÁRIO:
LH 176 NORTE KM 4
Rolim De Moura - RO
LOCAL:

ALDAIR JÚLIO PEREIRA
PREFEITO MUNICIPAL

JOEDER BRUNIERE DE SOUZA
Engenheiro Civil
CREA 1768 D/RO

ÁREAS em m

TOTAL 12 m

PREF.:

NOTAS:
- Ver notas e complementos desta no desenho 71.