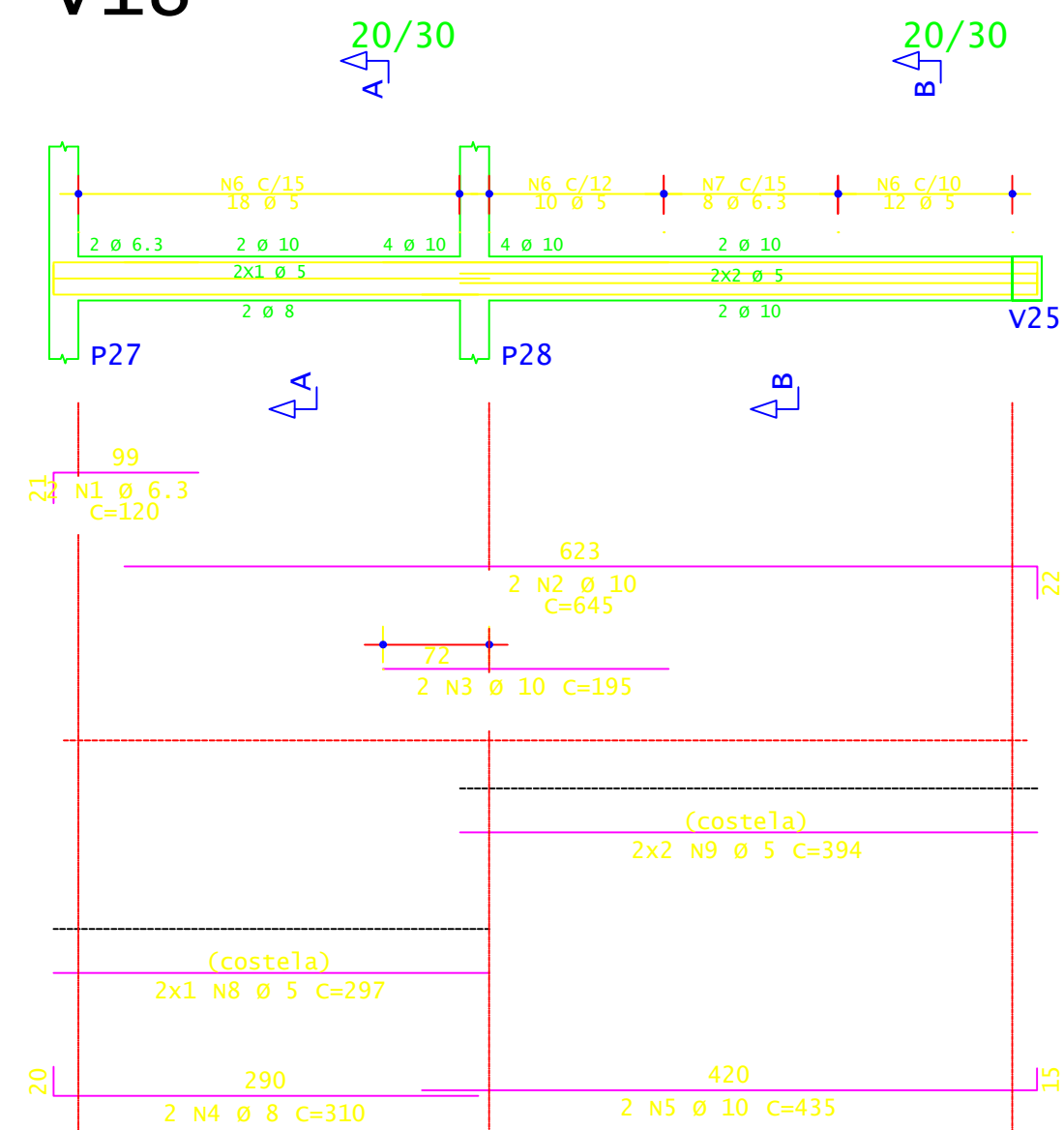
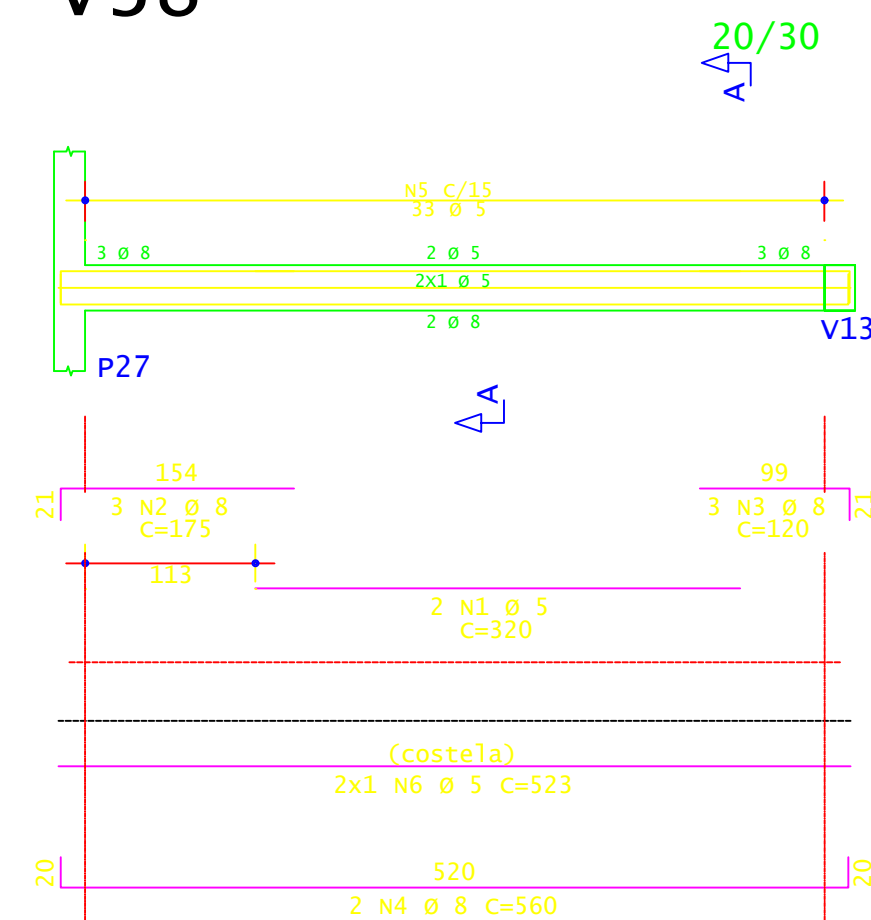


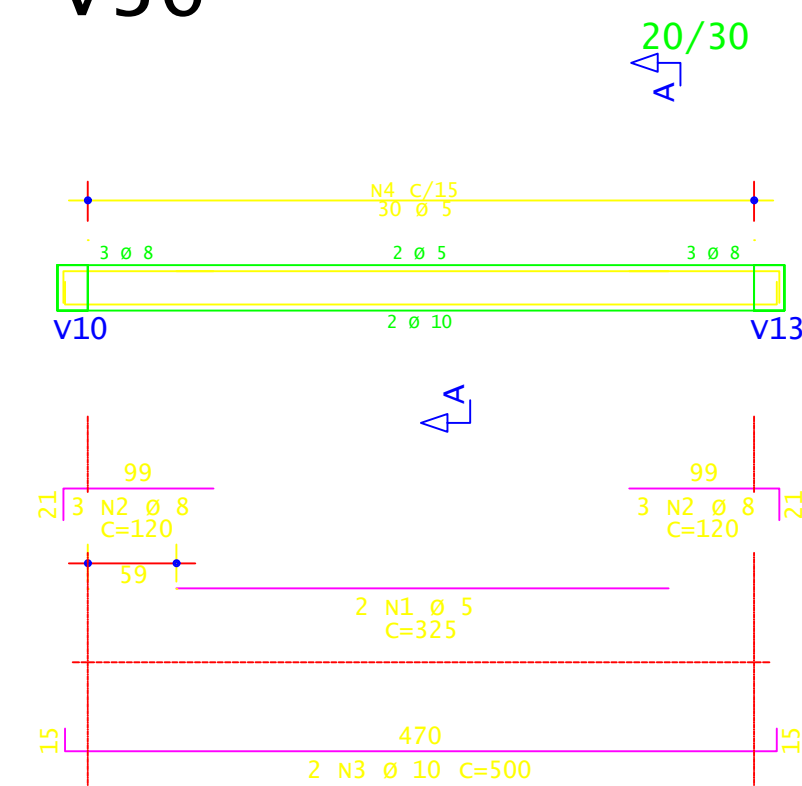
V18



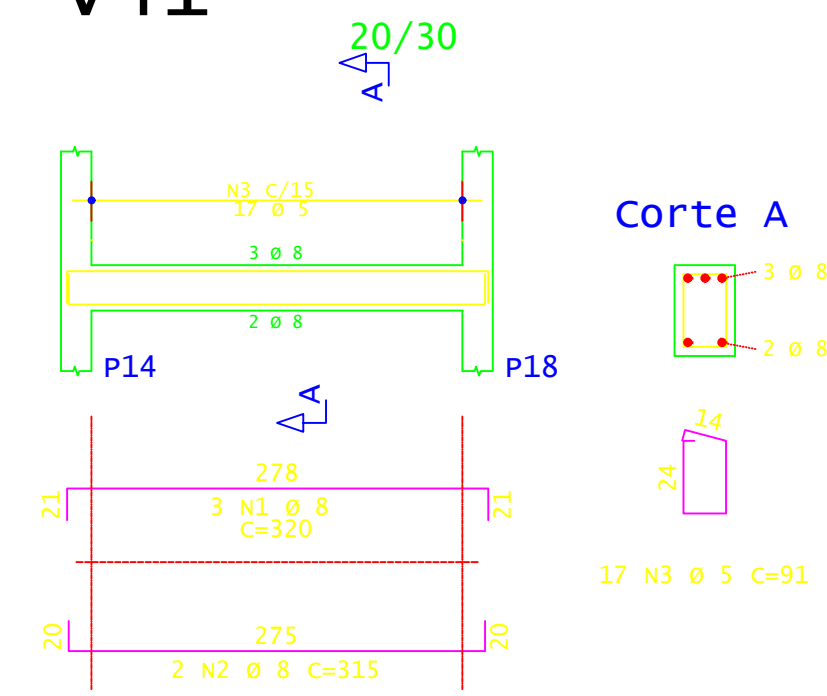
V38



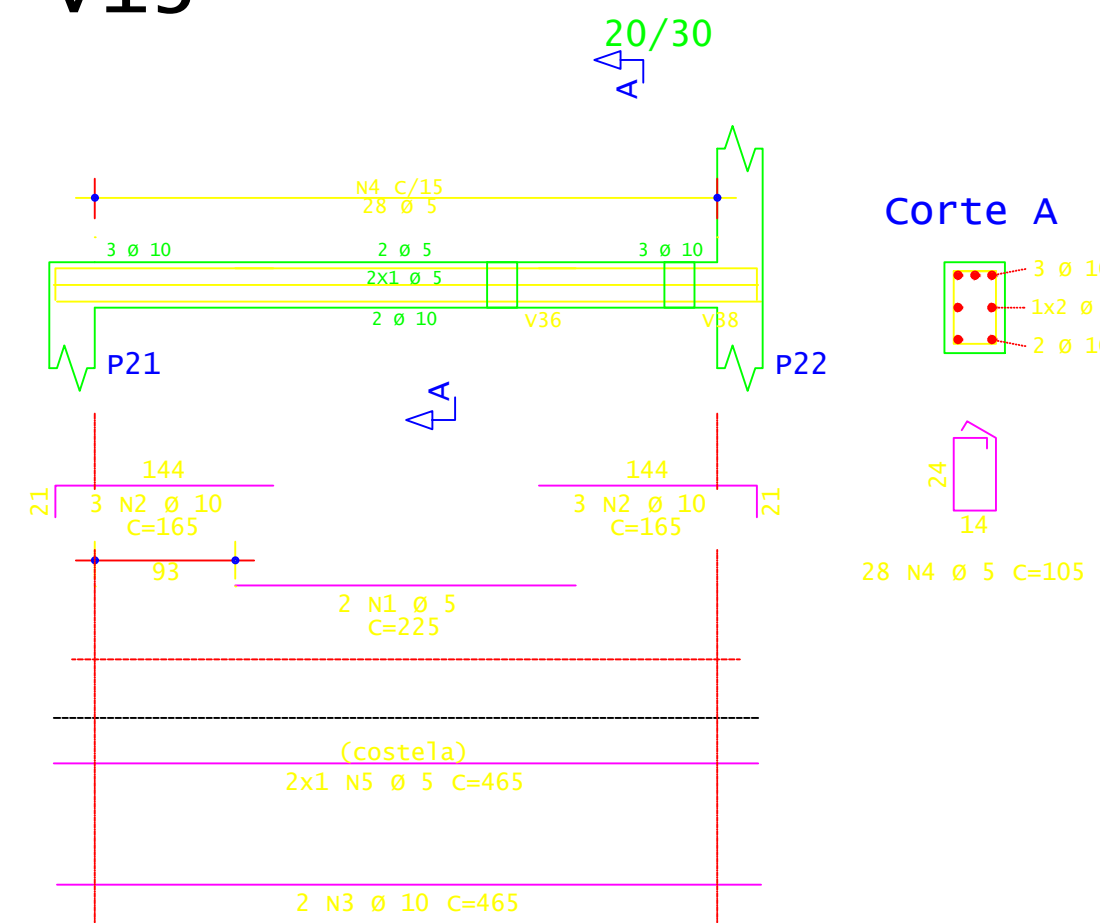
V36



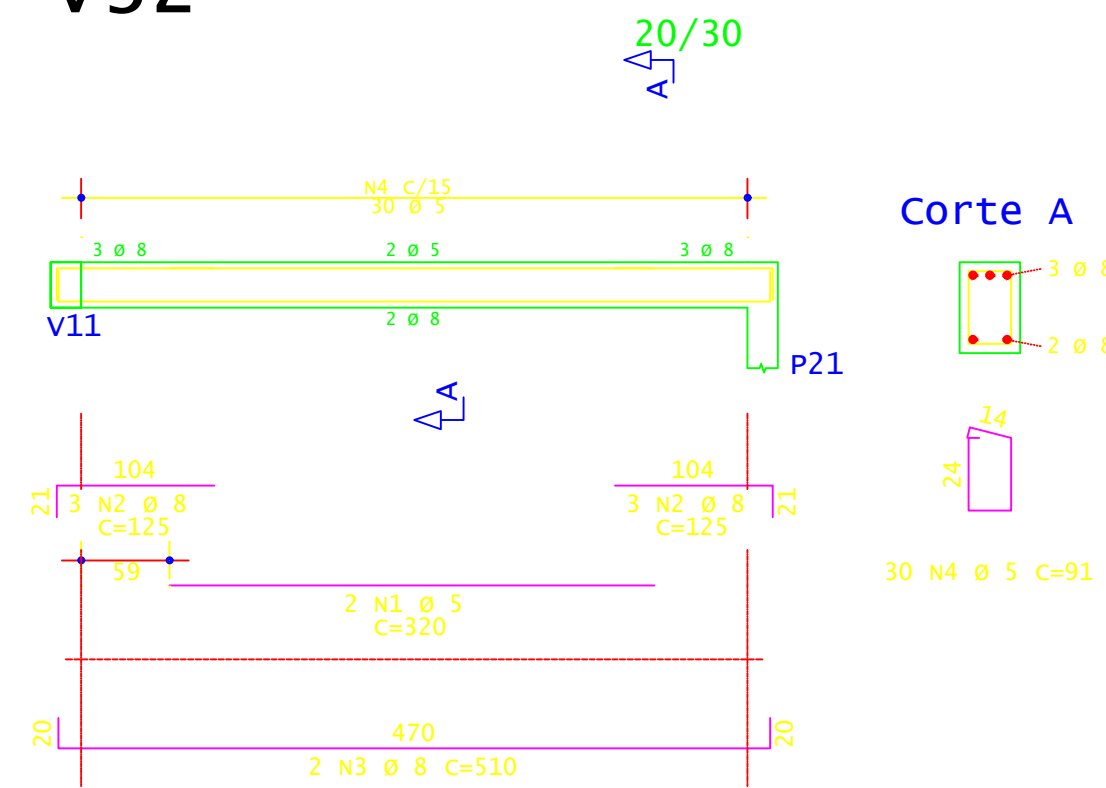
V41



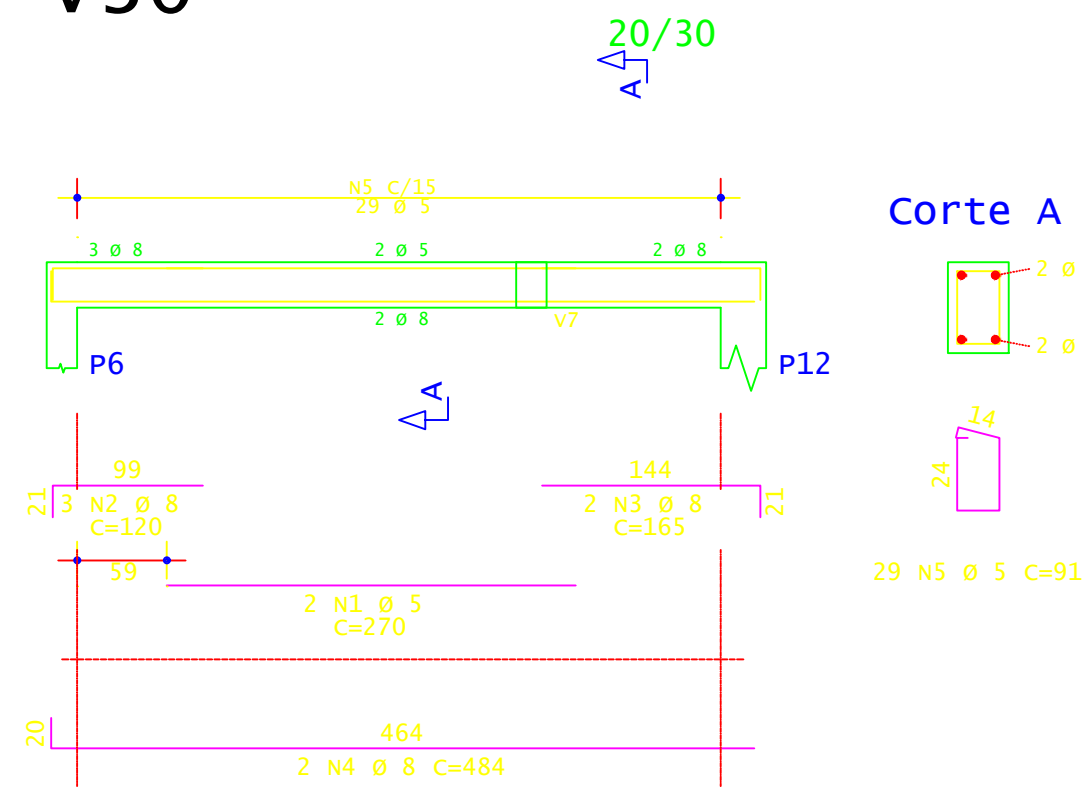
V13



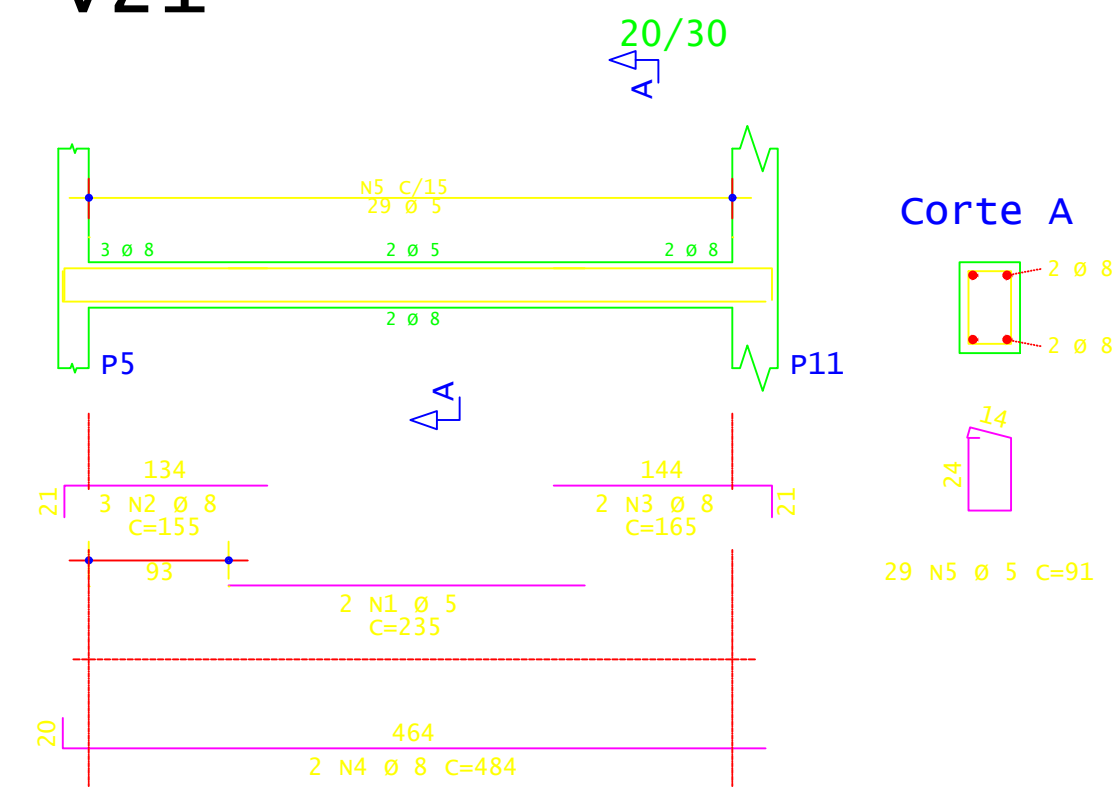
V32



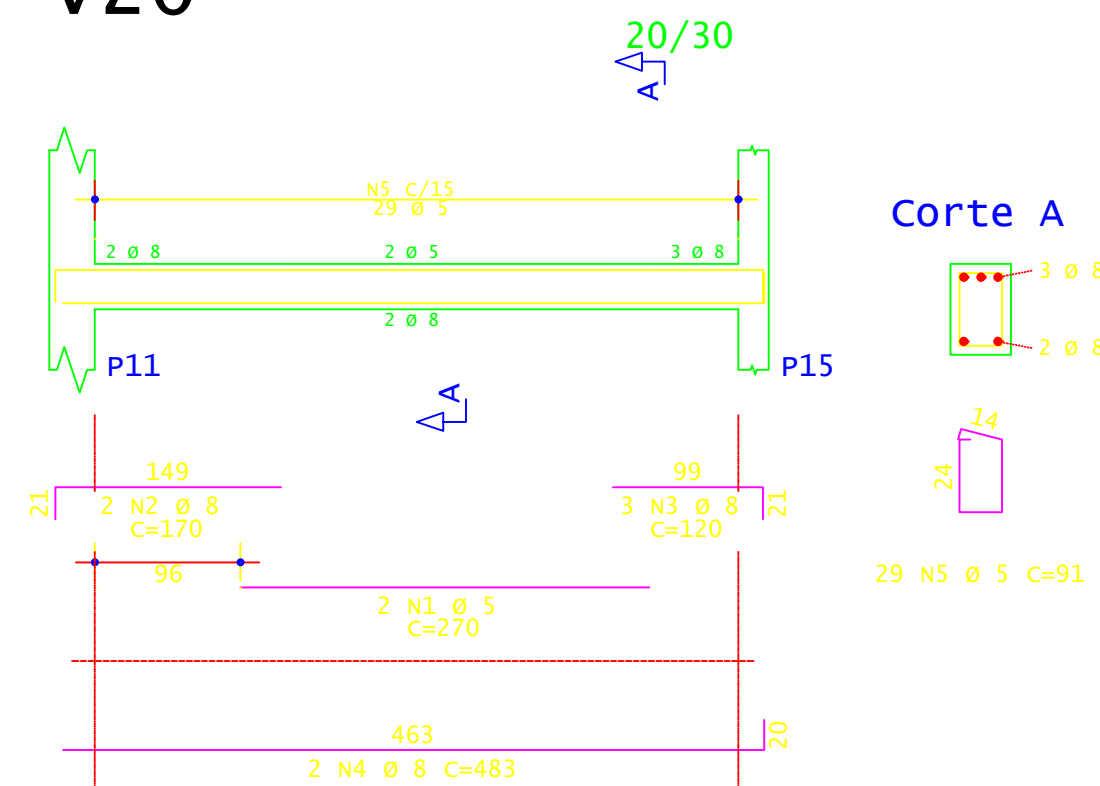
V30



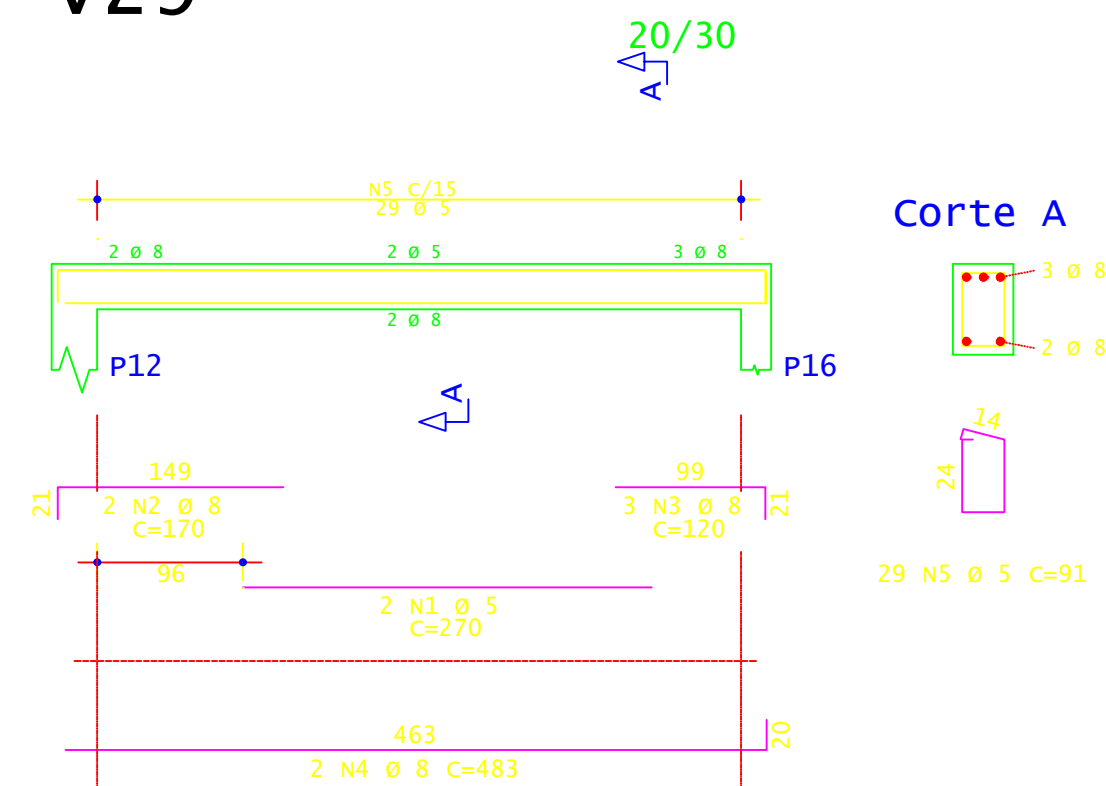
V21



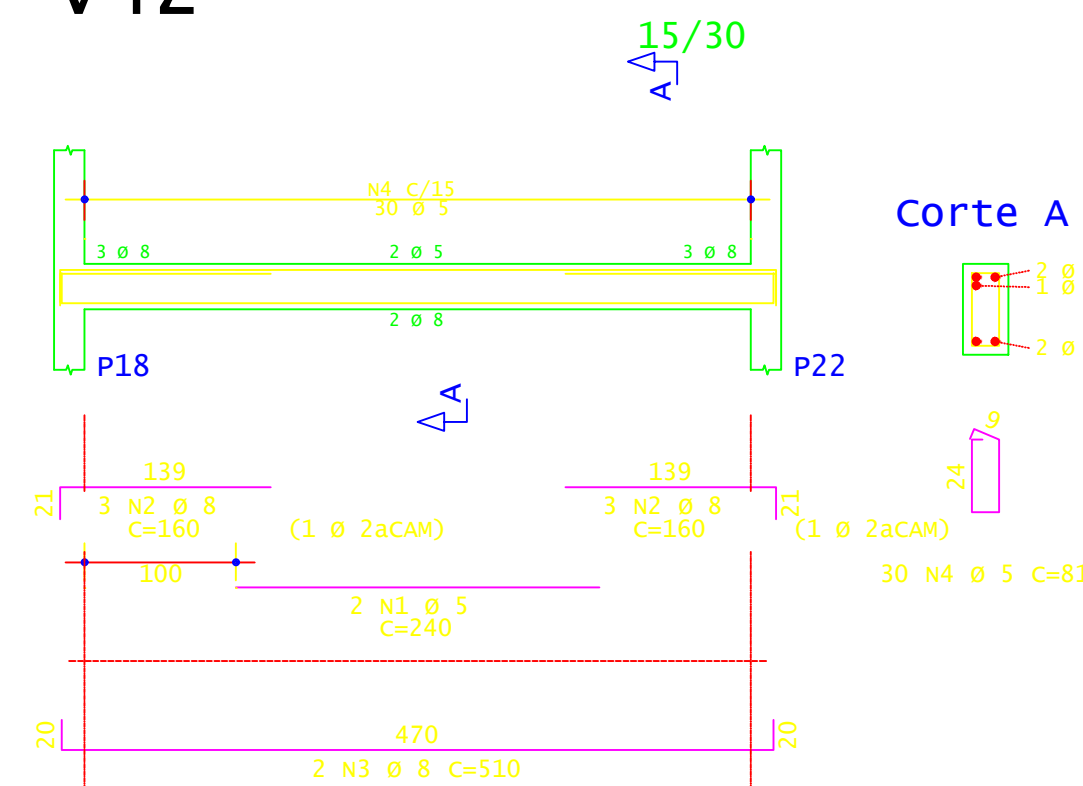
V20



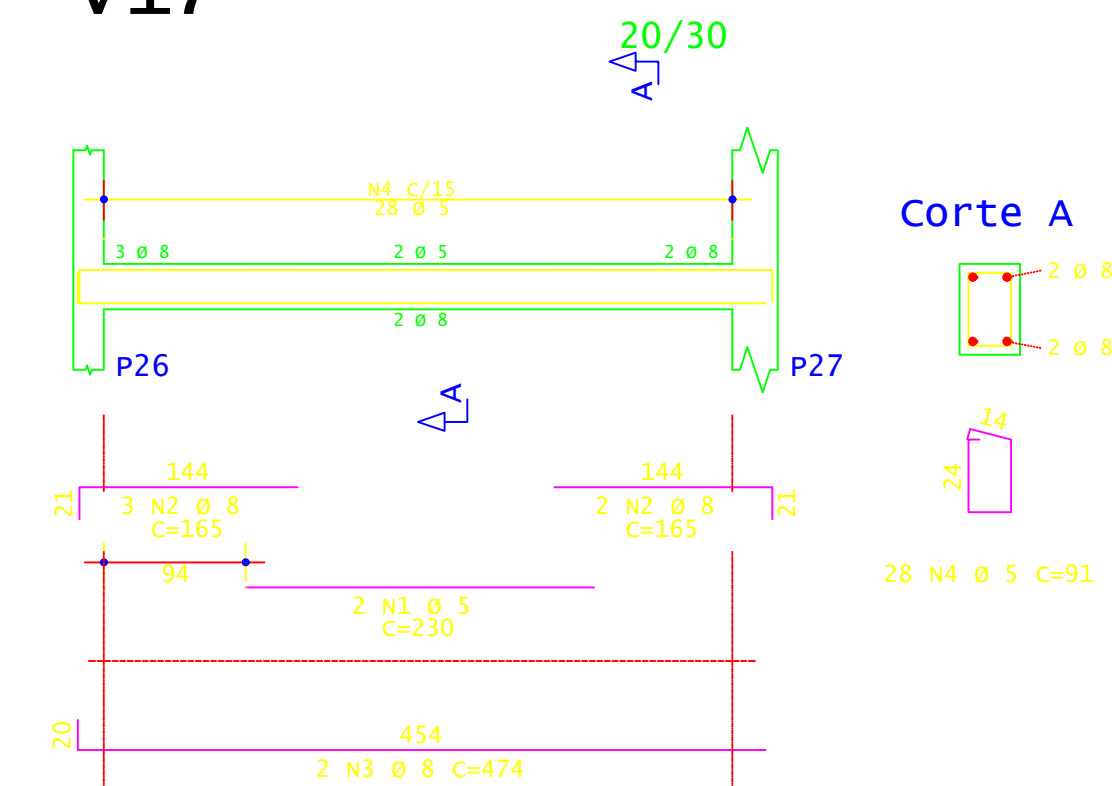
V29



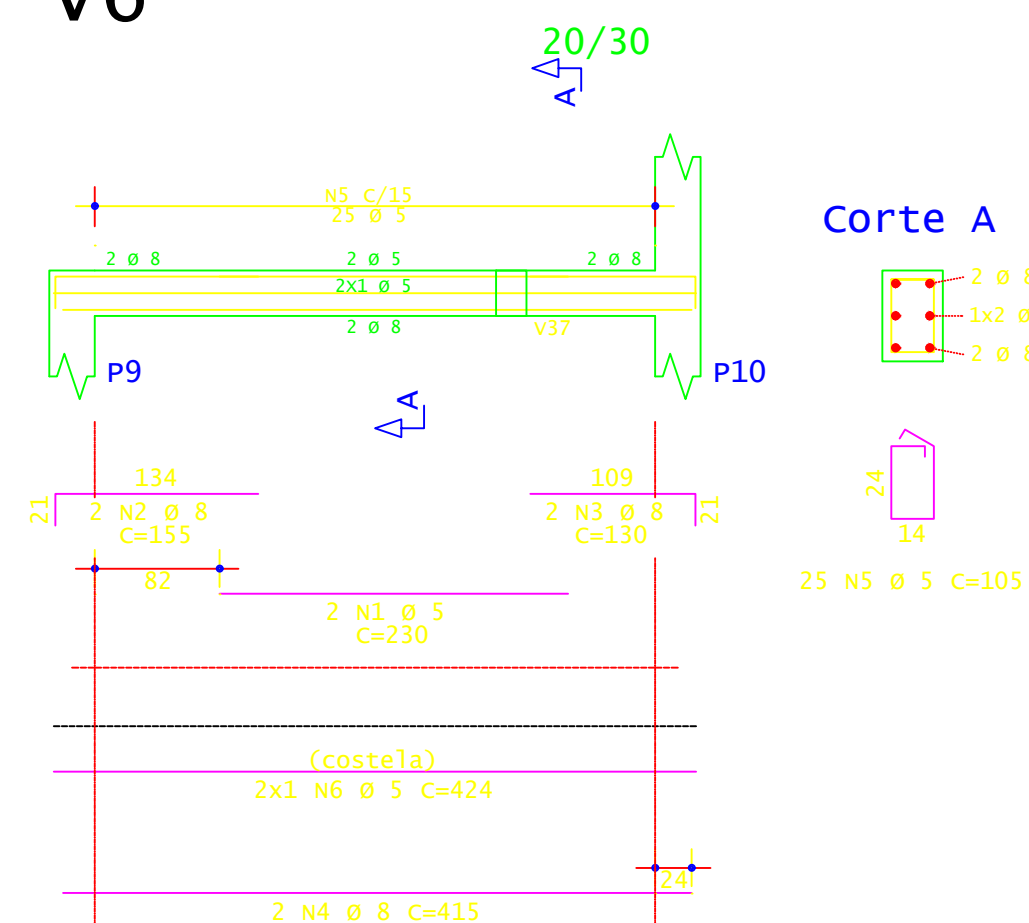
V42



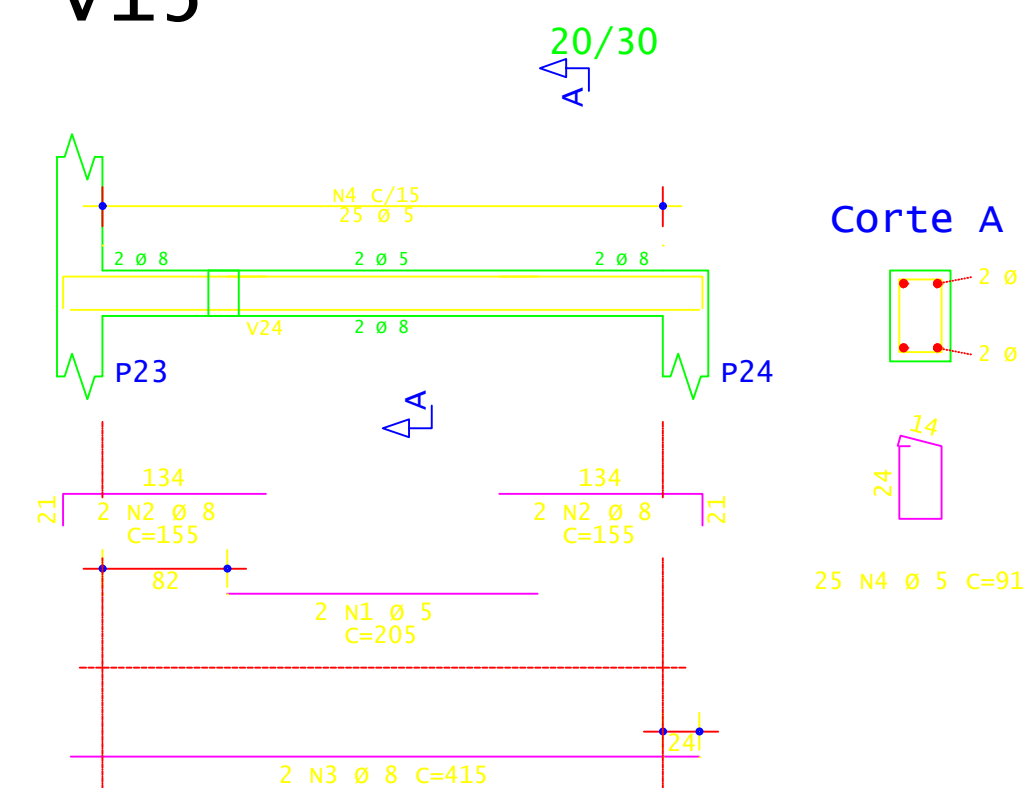
V17



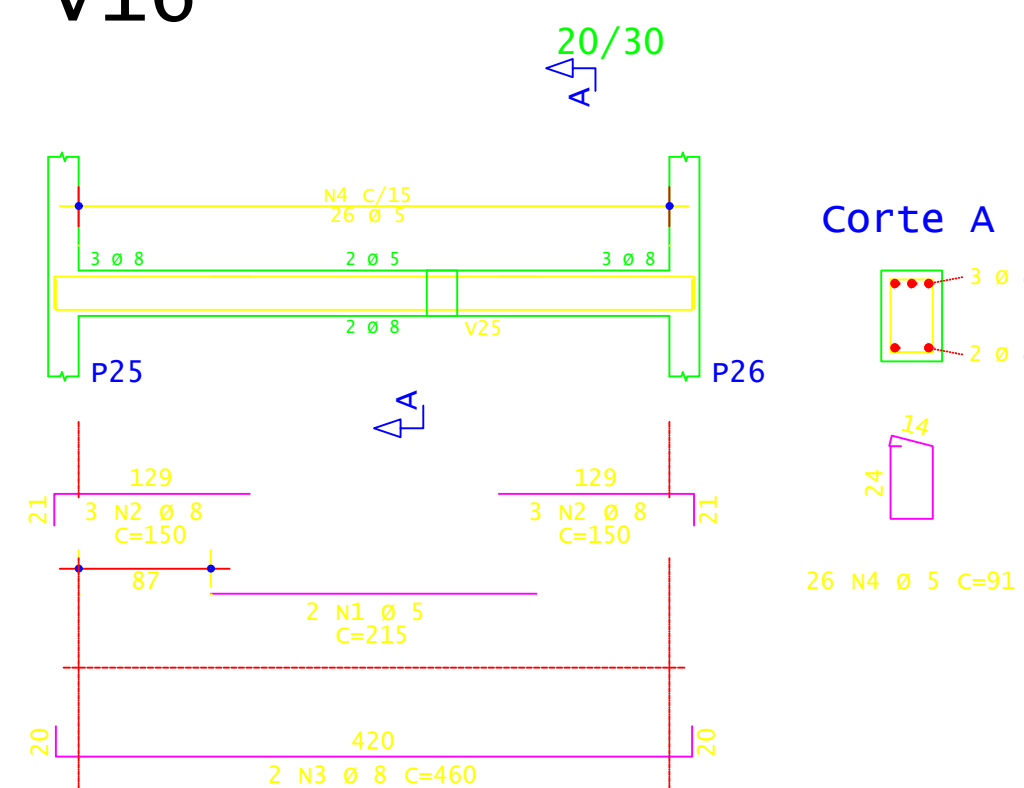
V6



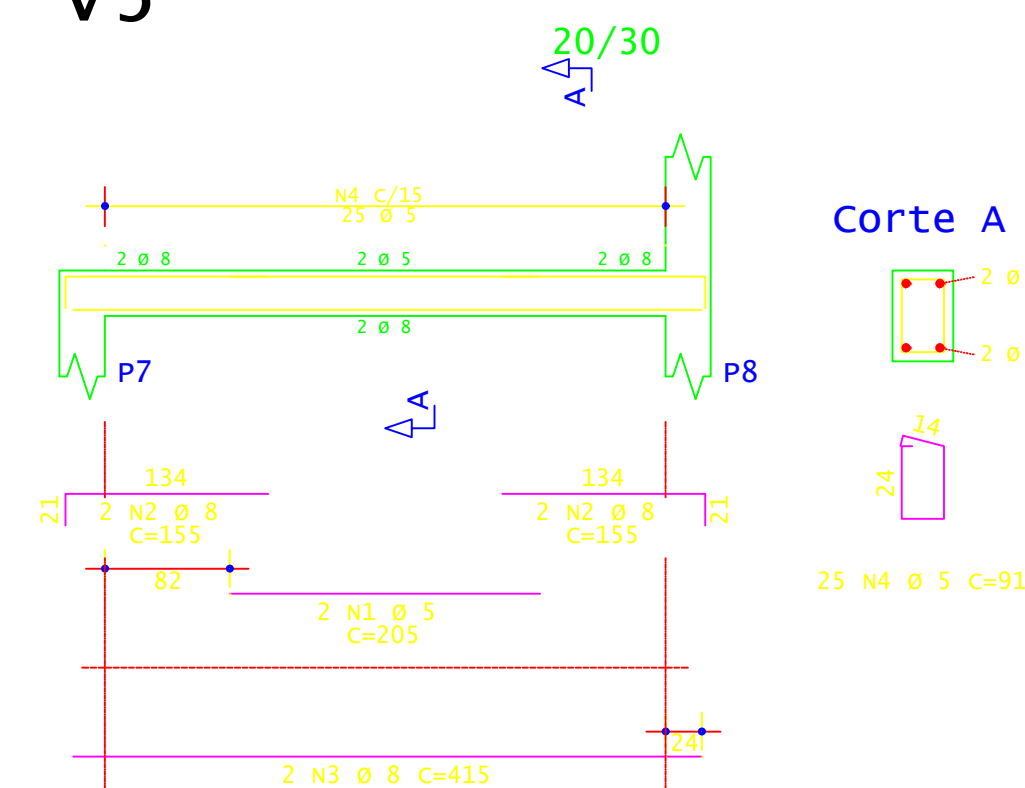
V15



V16



V5



AÇO	POS	BIT (mm)	QUANT	COMPRIMENTO		
				UNIT (cm)	TOTAL (cm)	
V5	60A	1	5	2	205	410
	50A	2	8	4	155	620
	50A	3	8	5	415	830
	60A	4	5	25	91	2275
V6	60A	1	5	2	230	460
	50A	2	8	2	155	310
	50A	3	8	2	130	260
	50A	4	8	2	415	830
	60A	5	5	25	105	2625
	60A	6	5	2	424	848
V13	60A	1	5	2	225	450
	50A	2	10	2	165	990
	50A	3	10	2	465	930
	60A	4	5	28	105	2940
V15	60A	5	5	2	465	930
	60A	1	5	2	205	410
	50A	2	8	4	155	620
	50A	3	8	2	415	830
V16	60A	4	5	25	91	2275
	60A	1	5	2	215	430
	50A	2	8	6	150	900
	50A	3	8	2	460	920
V17	60A	4	5	26	91	2366
	60A	1	5	2	230	460
	50A	2	8	2	170	825
	50A	3	8	2	474	948
V18	60A	4	5	28	91	2548
	50A	1	6.3	2	120	240
	50A	2	10	2	645	1290
	50A	3	10	2	195	390
V20	50A	4	8	2	310	620
	50A	5	10	2	435	870
	50A	6	5	40	105	4200
	50A	7	6.3	8	106	848
	60A	8	5	2	297	594
	60A	9	5	4	394	1576
	60A	1	5	2	270	540
	50A	2	8	2	170	340
	50A	3	8	3	120	360
V21	50A	4	8	2	483	966
	60A	5	5	29	91	2639
	60A	1	5	2	235	470
	50A	2	8	3	155	465
V29	50A	3	8	2	165	330
	50A	4	8	2	484	968
	60A	5	5	29	91	2639
	60A	1	5	2	270	540
V30	50A	2	8	2	170	340
	50A	3	8	3	120	360
	50A	4	8	2	483	966
	60A	5	5	29	91	2639
	60A	1	5	2	270	540
V32	50A	2	8	3	120	360
	50A	3	8	2	165	330
	50A	4	8	2	484	968
	60A	5	5	29	91	2639
V36	60A	1	5	2	320	640
	50A	2	8	6	125	750
	50A	3	8	2	510	1020
	60A	4	5	30	91	2730
V38	60A	1	5	2	325	650
	50A	2	8	6	120	720
	50A	3	10	2	500	1000
	60A	4	5	30	91	2730
	60A	1	5	2	320	640
	50A	2	8	3	175	525
V41	50A	3	8	3	120	360
	50A	4	8	2	560	1120
	50A	5	5	33	105	3465
	60A	6	5	2	523	1046
	50A	1	8	3	320	960
	50A	2	8	2	315	630
V42	60A	3	5	17	91	1547
	60A	1	5	2	240	480
	50A	2	8	6	160	960
	50A	3	8	2	510	1020
	60A	4	5	30	81	2430

RESUMO DE AÇO			
AÇO	BIT (mm)	COMPR (m)	PESO (kg)
60A	6.3	548	84
50A	8	11	3
50A	10	233	92
50A	10	55	34
Peso Total			60A = 84 kg
Peso Total			50A = 129 kg



PROJETO		ESTRUTURAÇÃO DA REDE DE SERVIÇOS DO SISTEMA ÚNICO DE ASSISTÊNCIA SOCIAL - SUAS - CONSTRUÇÃO DE CENTRO DE REFERÊNCIA ESPECIALIZADO DE ASSISTÊNCIA SOCIAL (CREAS)	
ADMINISTRAÇÃO		JOÃO MEDEIROS CAMPELO	
ENDEREÇO		MUNICÍPIO DE ITAMARATI-AMAZONAS	
TÍTULO		ESTRUTURAL - ARMAÇÃO VIGAS MEZANINO	
RESPONSÁVEL TÉCNICO		DESENHO	DATA
ENGº DENIS BOTELHO		ADENAUER GANDRA	AGO/2024
CREA: 18473 -D/AM		ESCALA	PRANCHA
		INDICADA	06/16