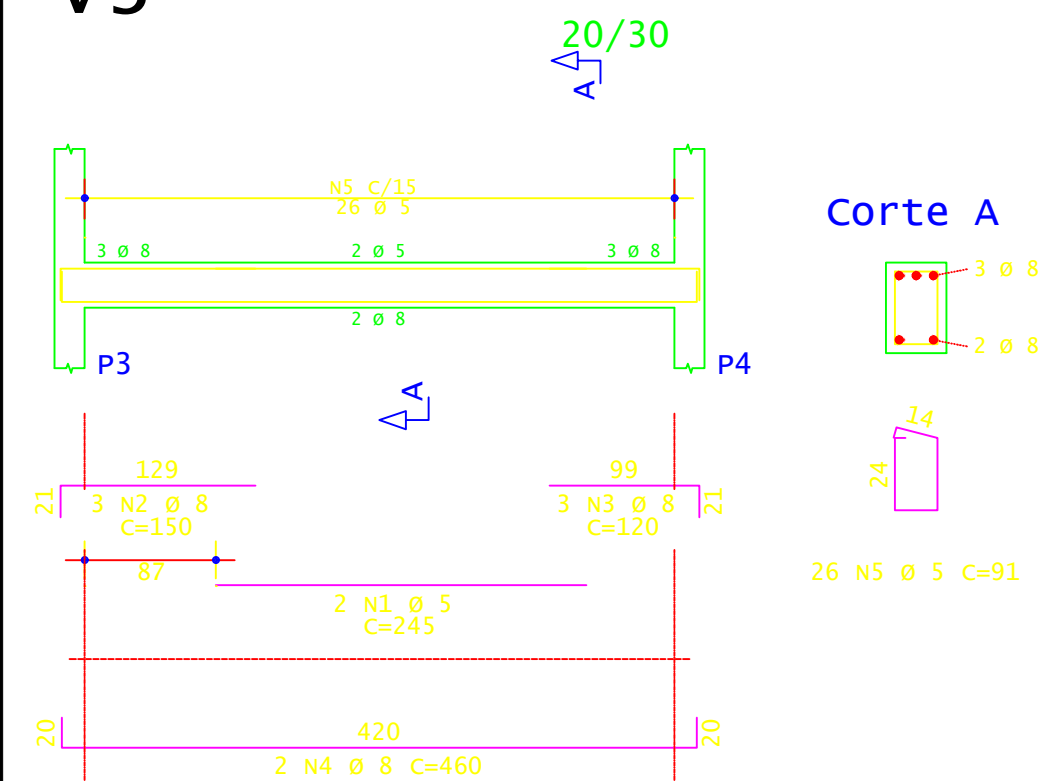
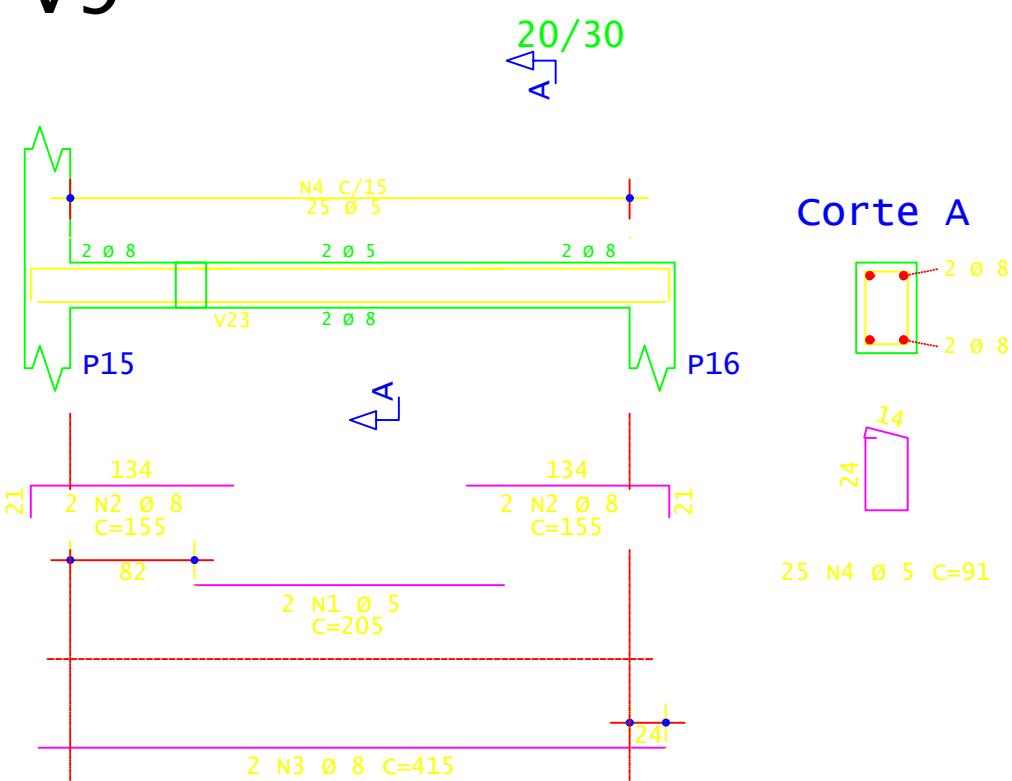


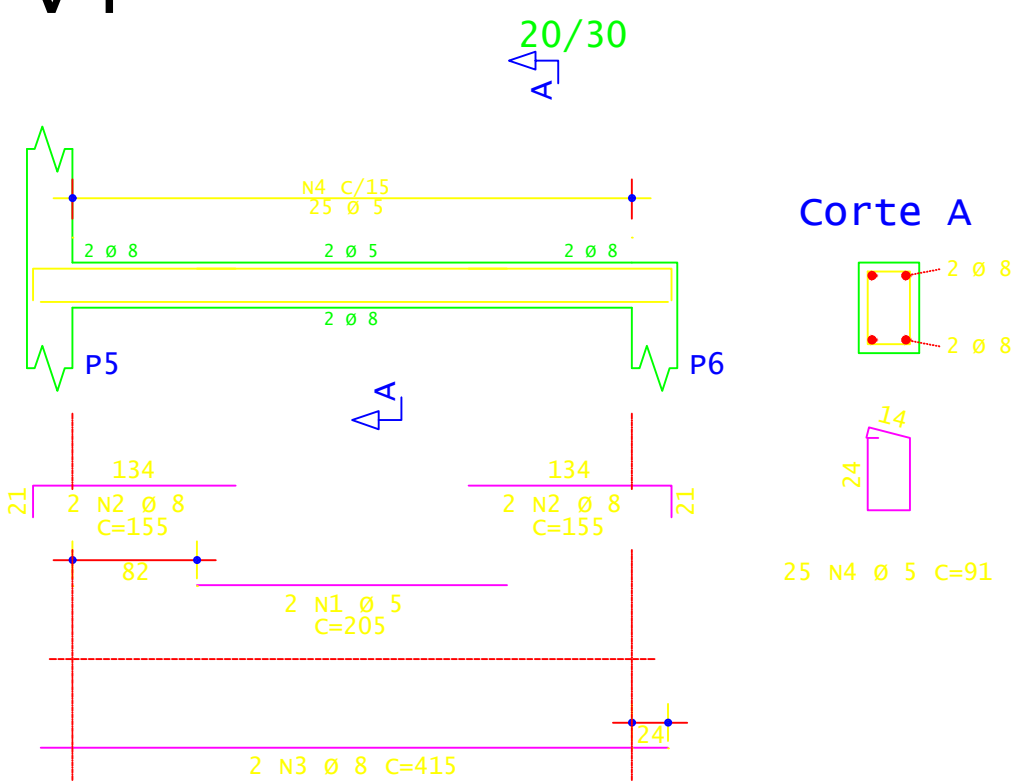
v3



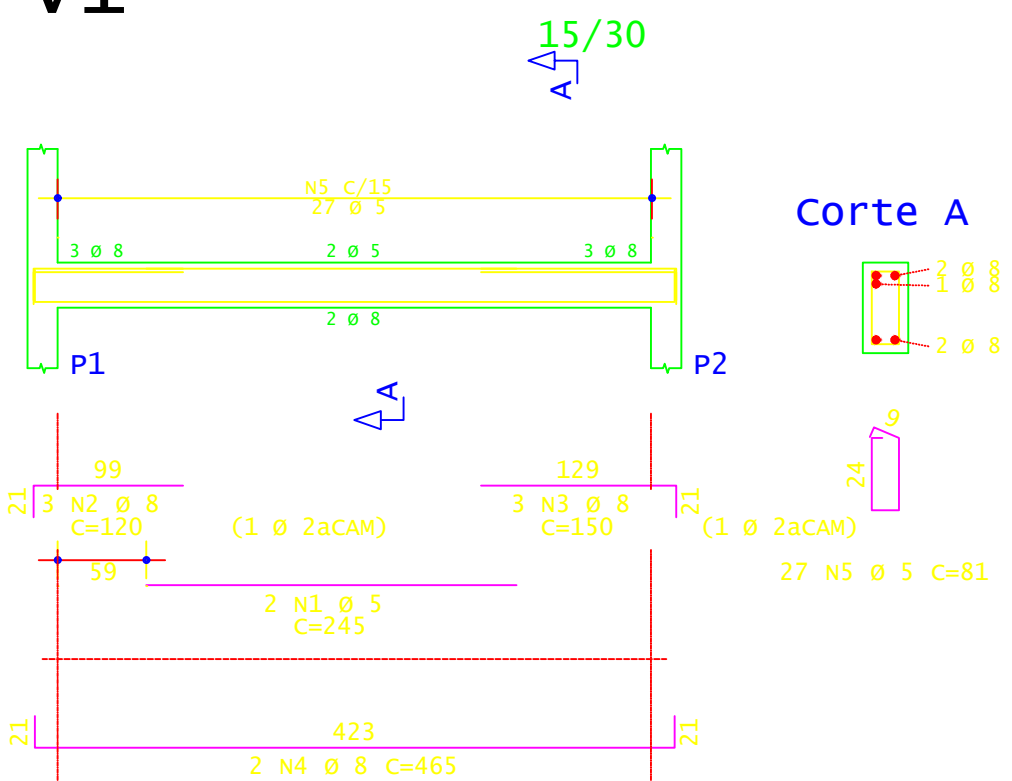
v9



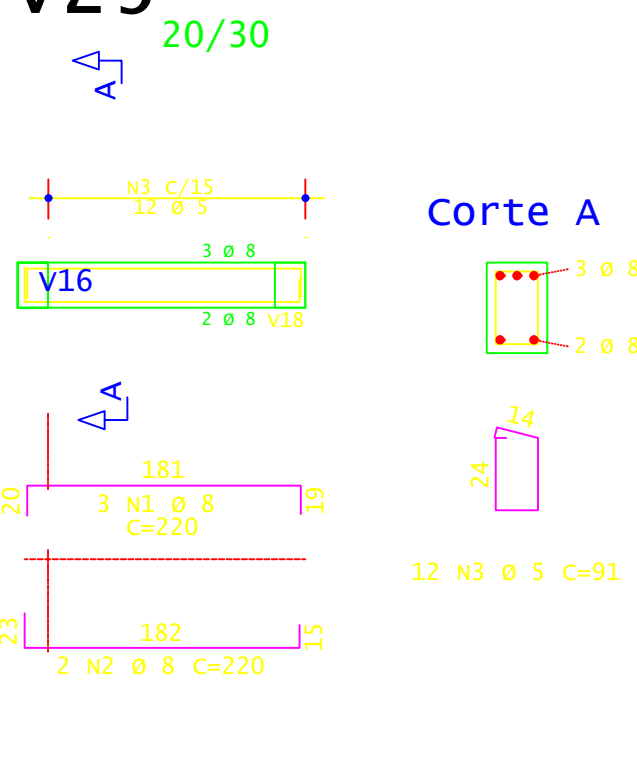
v4



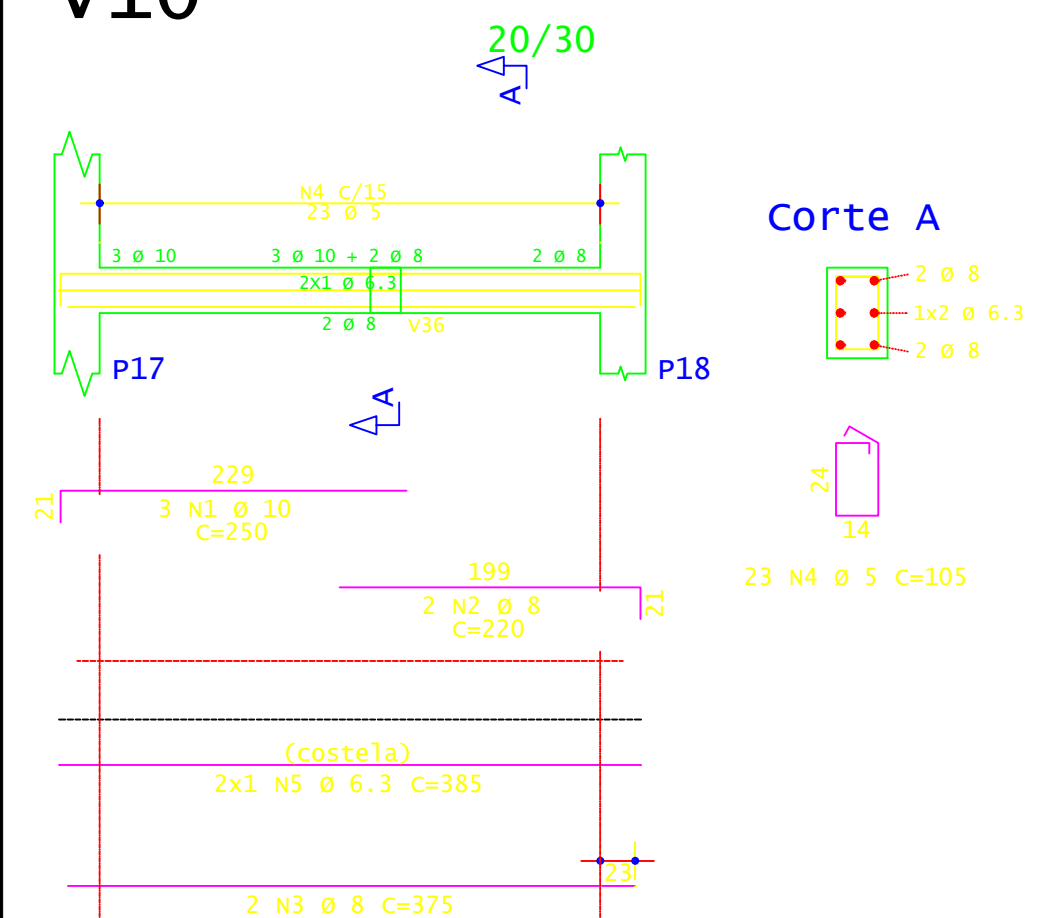
v1



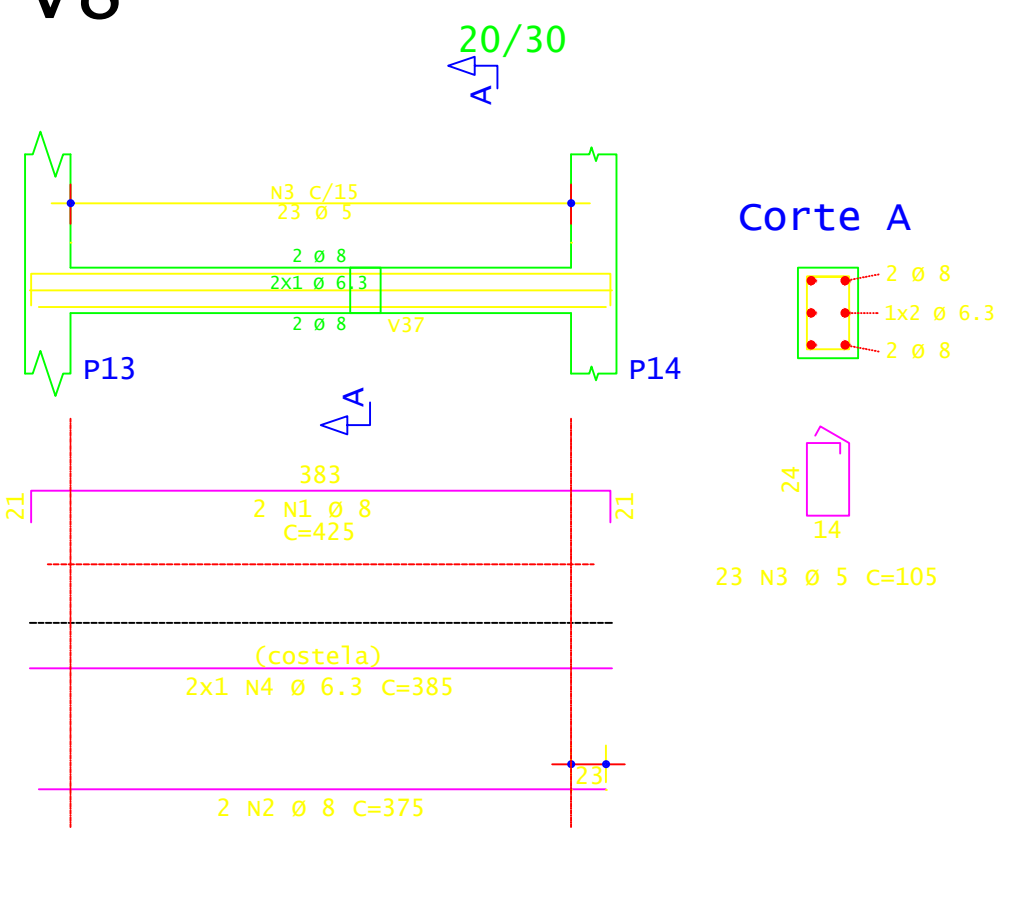
v25



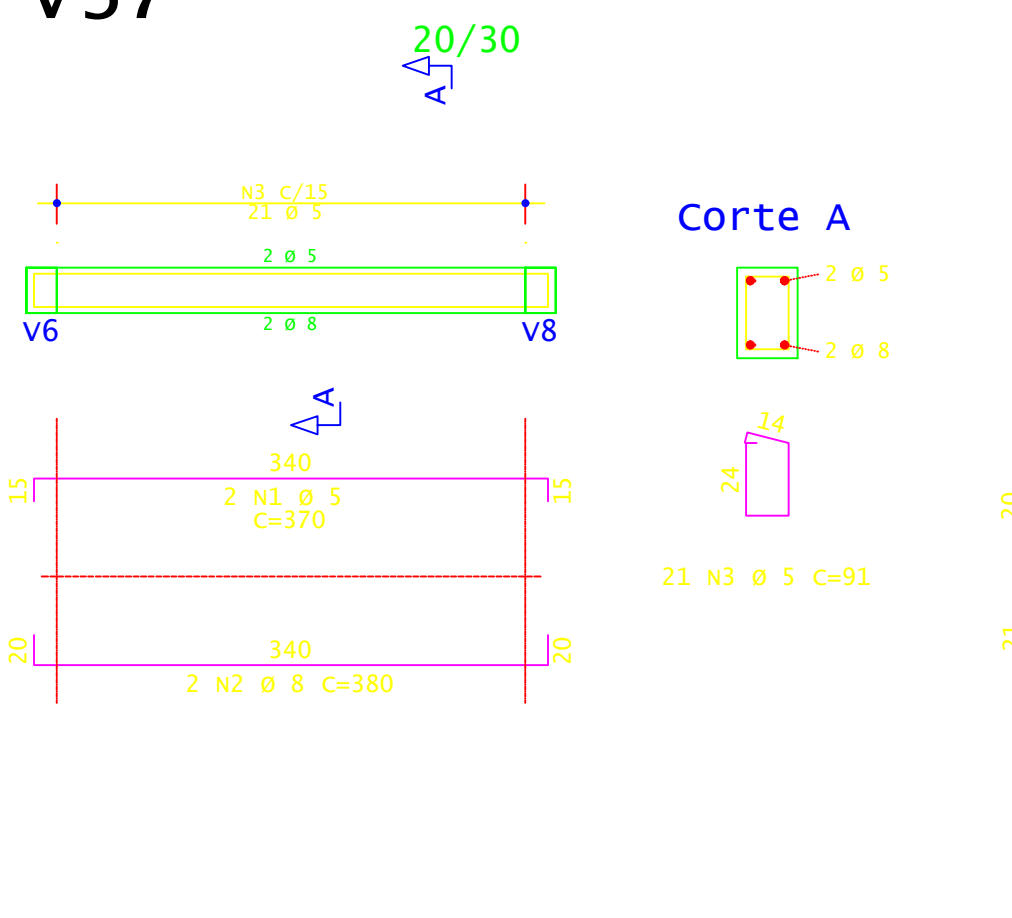
v10



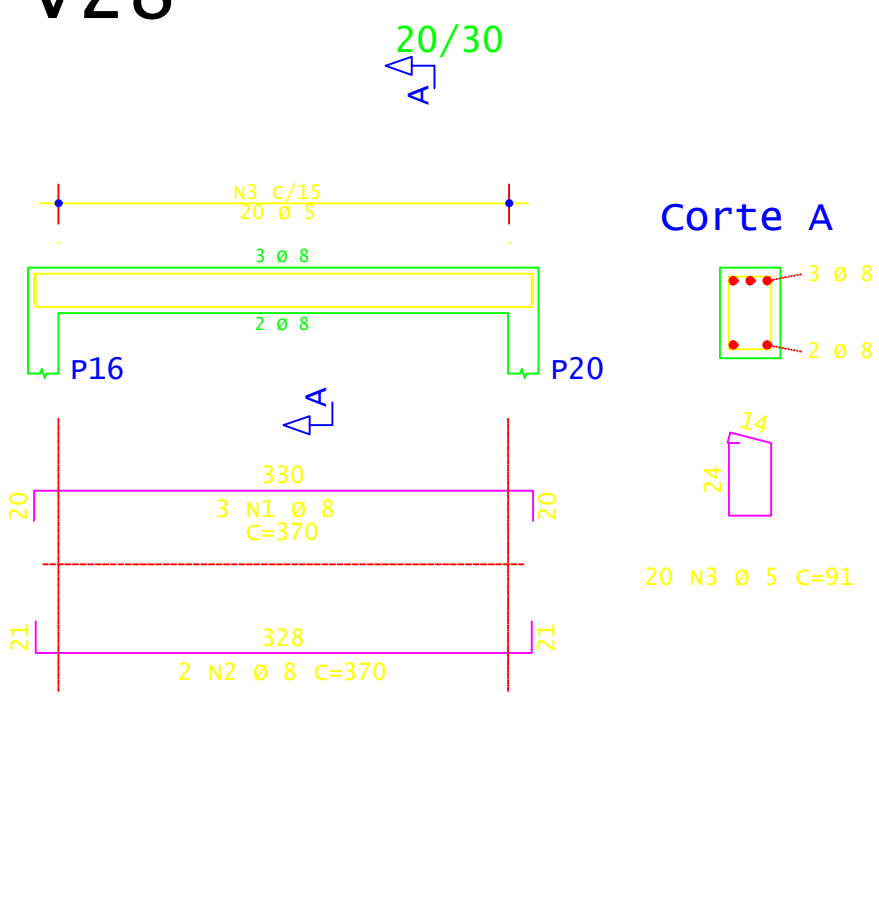
v8



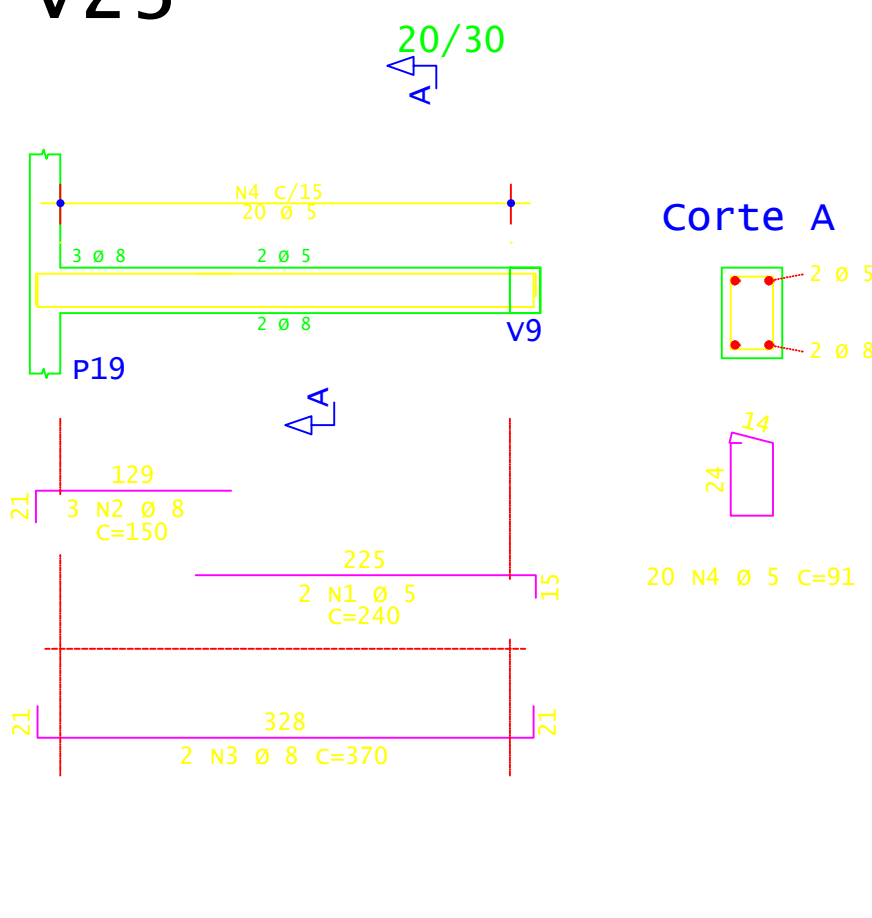
v37



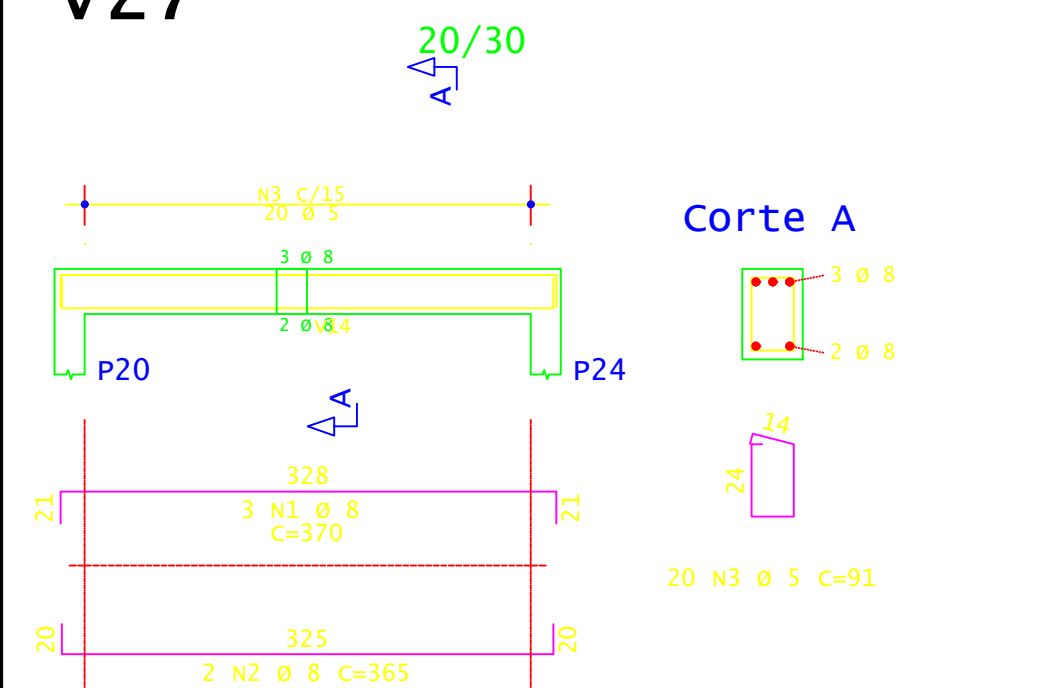
v28



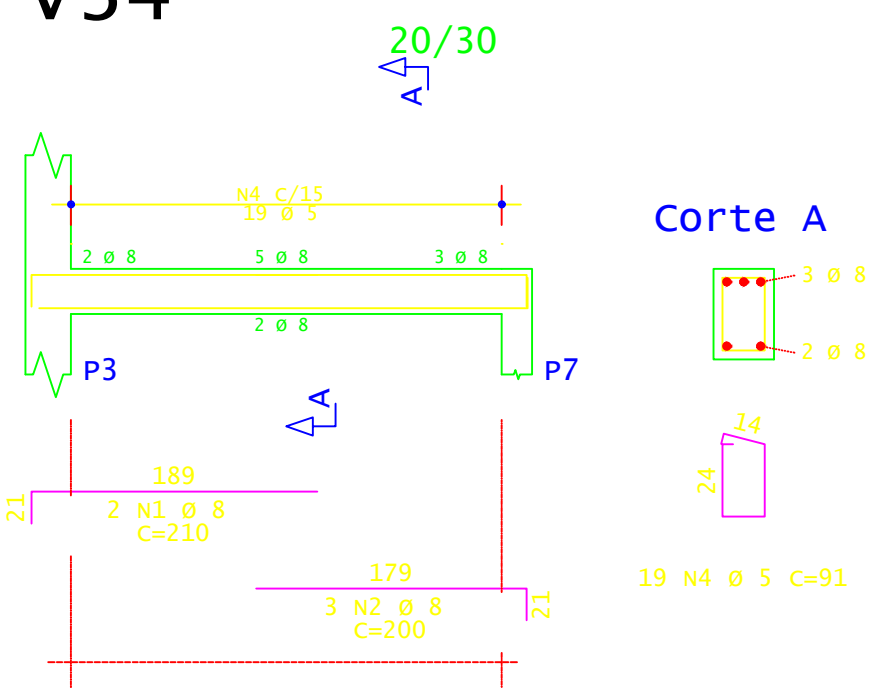
v23



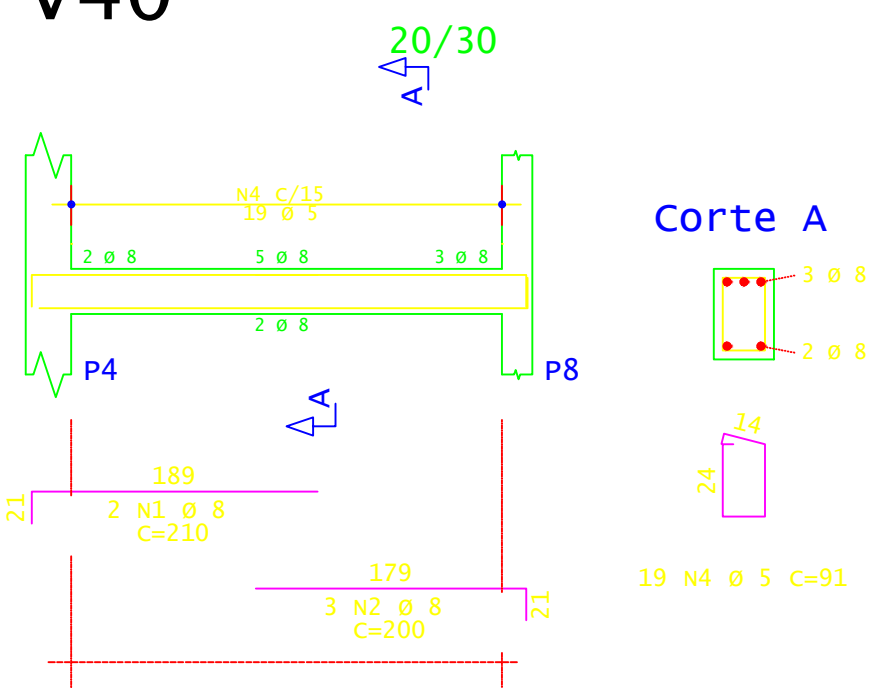
v27



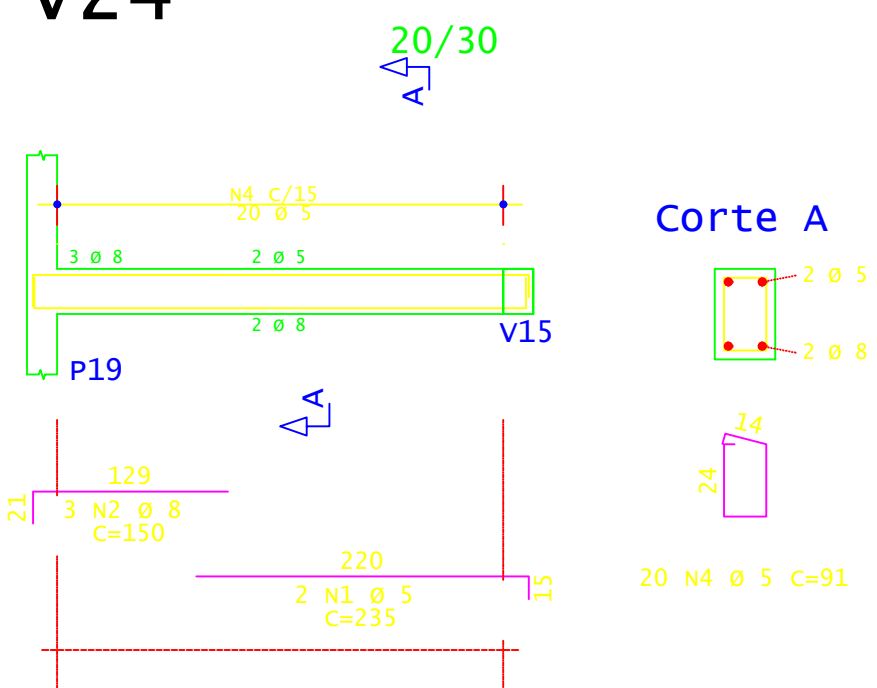
v34



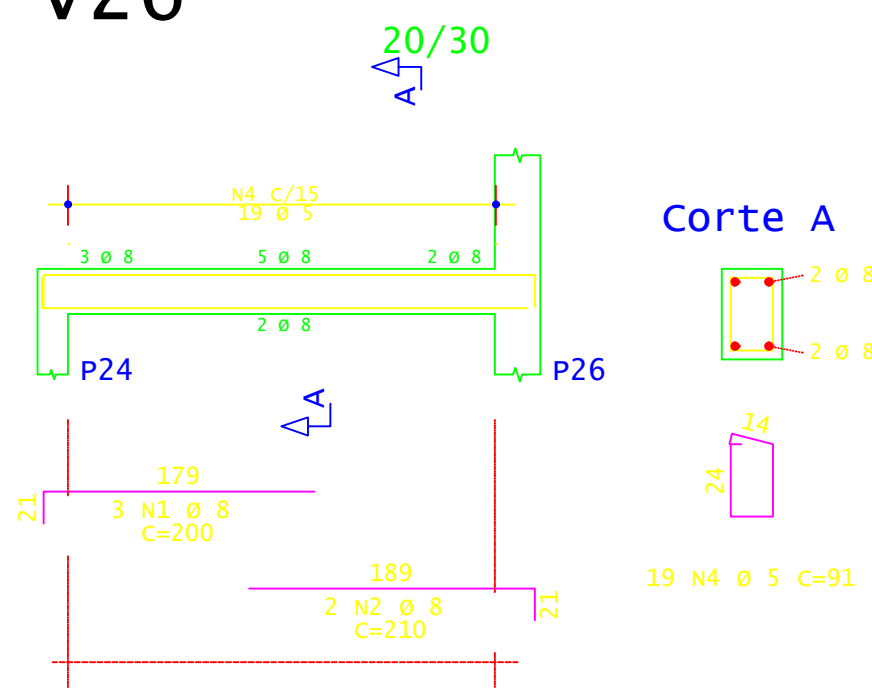
v40



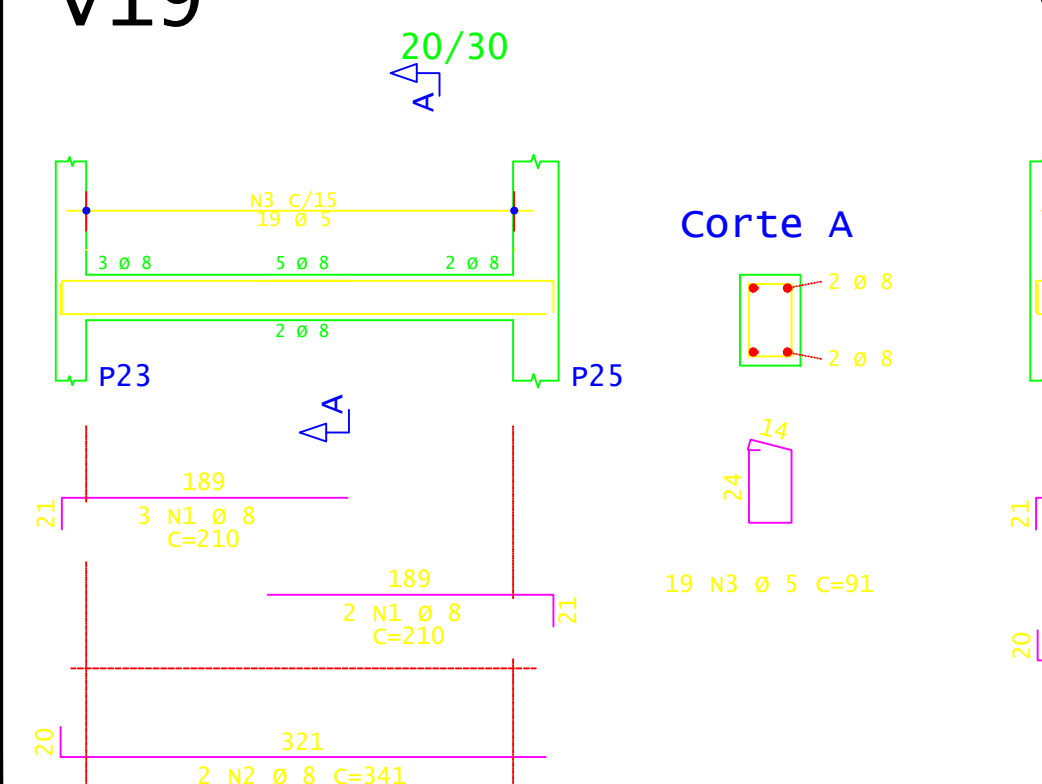
v24



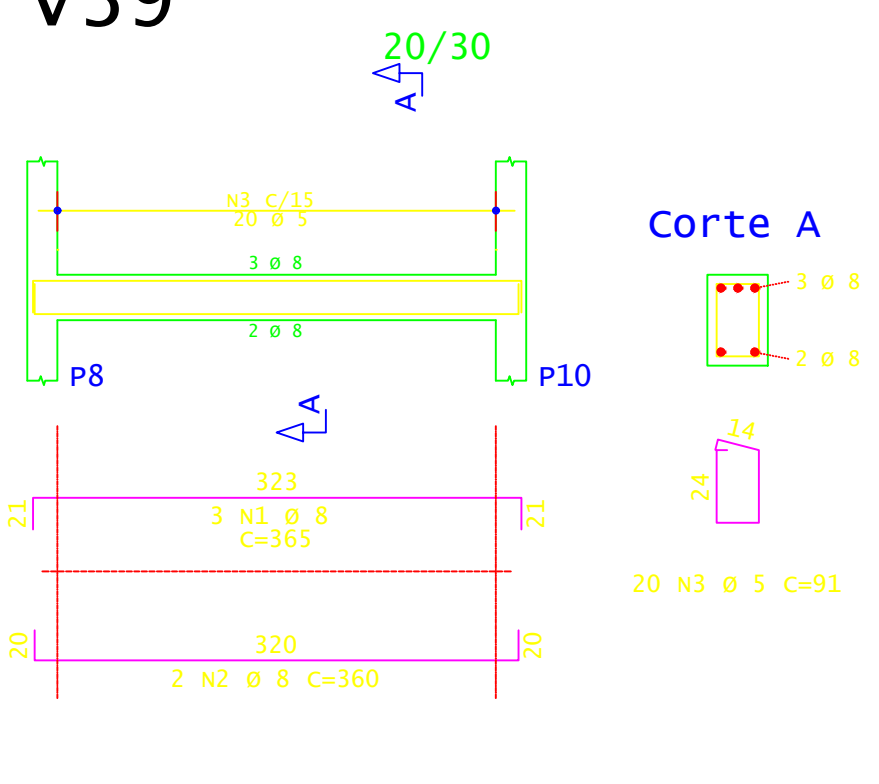
v26



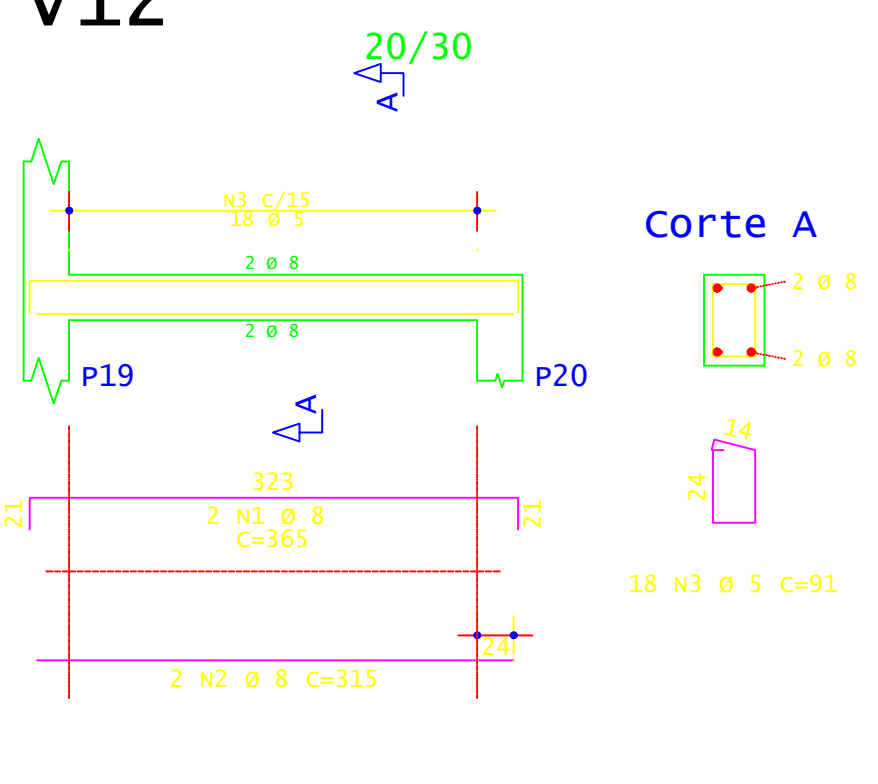
v19



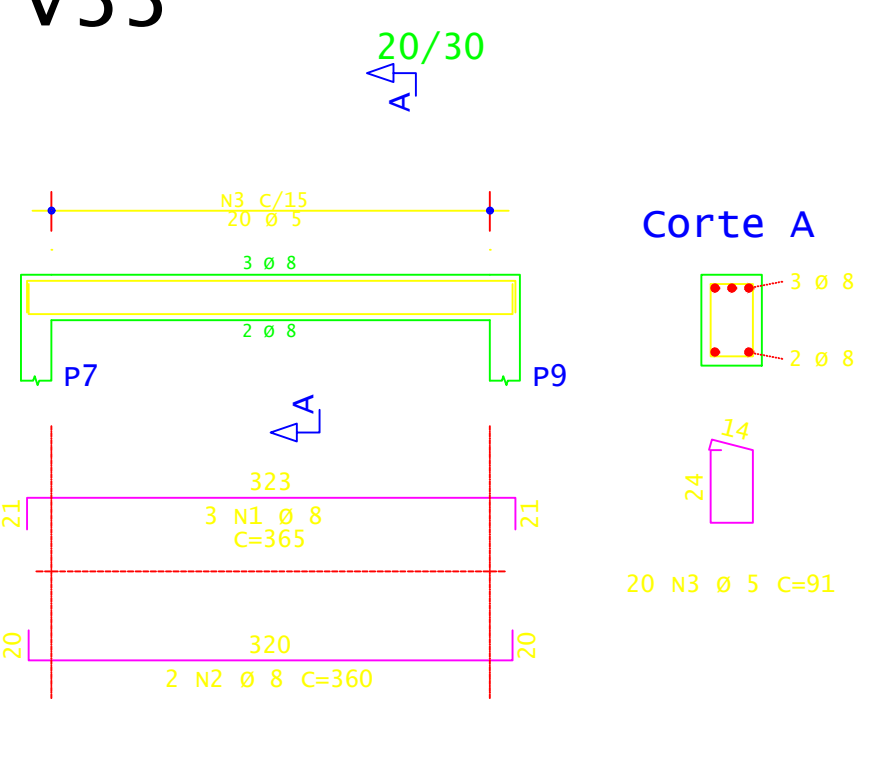
v39



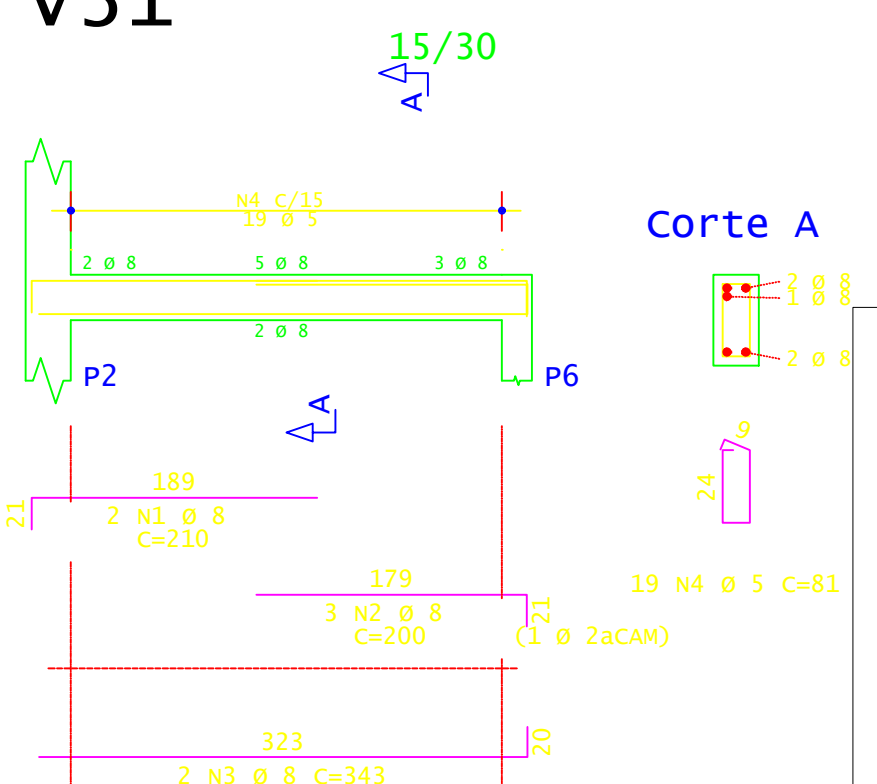
v12



v33



v31



|     | AÇO | POS | BIT<br>(mm) | QUANT | COMPRIMENTO  |               |
|-----|-----|-----|-------------|-------|--------------|---------------|
|     |     |     |             |       | UNIT<br>(cm) | TOTAL<br>(cm) |
| V1  | 60A | 1   | 5           | 2     | 245          | 490           |
|     | 50A | 2   | 8           | 3     | 120          | 360           |
|     | 50A | 3   | 8           | 3     | 150          | 450           |
|     | 50A | 4   | 8           | 2     | 465          | 930           |
|     | 60A | 5   | 5           | 27    | 81           | 2187          |
| V3  | 60A | 1   | 5           | 2     | 245          | 490           |
|     | 50A | 2   | 8           | 3     | 120          | 360           |
|     | 50A | 3   | 8           | 3     | 150          | 450           |
|     | 50A | 4   | 8           | 2     | 460          | 920           |
|     | 60A | 5   | 5           | 26    | 91           | 2366          |
| V4  | 60A | 1   | 5           | 2     | 205          | 410           |
|     | 50A | 2   | 8           | 4     | 155          | 620           |
|     | 50A | 3   | 8           | 2     | 415          | 830           |
|     | 60A | 4   | 5           | 25    | 91           | 2275          |
| V8  | 50A | 1   | 8           | 2     | 425          | 850           |
|     | 50A | 2   | 8           | 5     | 375          | 1500          |
|     | 60A | 3   | 5           | 23    | 105          | 2415          |
|     | 50A | 4   | 6.3         | 2     | 385          | 770           |
| V9  | 60A | 1   | 5           | 2     | 205          | 410           |
|     | 50A | 2   | 8           | 3     | 155          | 620           |
|     | 50A | 3   | 8           | 2     | 415          | 830           |
|     | 60A | 4   | 5           | 25    | 91           | 2275          |
| V10 | 50A | 1   | 10          | 3     | 250          | 750           |
|     | 50A | 2   | 8           | 2     | 220          | 440           |
|     | 50A | 3   | 8           | 2     | 375          | 750           |
|     | 60A | 4   | 5           | 23    | 105          | 2415          |
|     | 50A | 5   | 6.3         | 2     | 385          | 770           |
| V12 | 50A | 1   | 8           | 2     | 365          | 730           |
|     | 50A | 2   | 8           | 2     | 315          | 630           |
|     | 60A | 3   | 5           | 18    | 91           | 1638          |
| V19 | 50A | 1   | 8           | 5     | 210          | 1050          |
|     | 50A | 2   | 8           | 2     | 341          | 682           |
|     | 60A | 3   | 5           | 19    | 91           | 1729          |
| V23 | 60A | 1   | 5           | 2     | 240          | 480           |
|     | 50A | 2   | 8           | 3     | 150          | 450           |
|     | 50A | 3   | 8           | 2     | 370          | 740           |
|     | 60A | 4   | 5           | 20    | 91           | 1820          |
| V24 | 60A | 1   | 5           | 2     | 235          | 470           |
|     | 50A | 2   | 8           | 3     | 150          | 450           |
|     | 50A | 3   | 8           | 2     | 365          | 730           |
|     | 60A | 4   | 5           | 20    | 91           | 1820          |
| V25 | 50A | 1   | 8           | 3     | 220          | 660           |
|     | 50A | 2   | 8           | 2     | 220          | 440           |
|     | 60A | 3   | 5           | 12    | 91           | 1092          |
| V26 | 50A | 1   | 8           | 3     | 200          | 600           |
|     | 50A | 2   | 8           | 2     | 210          | 420           |
|     | 50A | 3   | 8           | 2     | 341          | 682           |
|     | 60A | 4   | 5           | 19    | 91           | 1729          |
| V27 | 50A | 1   | 8           | 3     | 370          | 1110          |
|     | 50A | 2   | 8           | 2     | 365          | 730           |
|     | 60A | 3   | 5           | 20    | 91           | 1820          |
|     | 50A | 1   | 8           | 3     | 370          | 1110          |
| V28 | 50A | 2   | 8           | 2     | 370          | 740           |
|     | 60A | 3   | 5           | 20    | 91           | 1820          |
|     | V31 | 50A | 1           | 8     | 2            | 210           |
| 50A |     | 2   | 8           | 3     | 200          | 600           |
| 50A |     | 3   | 8           | 2     | 343          | 686           |
| 60A |     | 4   | 5           | 19    | 81           | 1539          |
| V33 | 50A | 1   | 8           | 3     | 365          | 1095          |
|     | 50A | 2   | 8           | 2     | 360          | 720           |
|     | 60A | 3   | 5           | 20    | 91           | 1820          |
| V34 | 50A | 1   | 8           | 2     | 210          | 420           |
|     | 50A | 2   | 8           | 3     | 200          | 600           |
|     | 50A | 3   | 8           | 2     | 343          | 686           |
|     | 60A | 4   | 5           | 19    | 91           | 1729          |
| V37 | 60A | 1   | 5           | 2     | 370          | 740           |
|     | 50A | 2   | 8           | 2     | 380          | 760           |
|     | 60A | 3   | 5           | 21    | 91           | 1911          |
| V39 | 50A | 1   | 8           | 3     | 365          | 1095          |
|     | 50A | 2   | 8           | 2     | 360          | 720           |
|     | 60A | 3   | 5           | 20    | 91           | 1820          |
| V40 | 50A | 1   | 8           | 2     | 210          | 420           |
|     | 50A | 2   | 8           | 3     | 200          | 600           |
|     | 50A | 3   | 8           | 2     | 343          | 686           |
|     | 60A | 4   | 5           | 19    | 91           | 1729          |

| RESUMO DE AÇO |             |              |              |
|---------------|-------------|--------------|--------------|
| AÇO           | BIT<br>(mm) | COMPR<br>(m) | PESO<br>(kg) |
| 60A           | 5           | 414          | 64           |
| 50A           | 6.3         | 15           | 4            |
| 50A           | 8           | 306          | 121          |
| 50A           | 10          | 8            | 5            |
| Peso Total    |             |              | 60A = 64 kg  |
| Peso Total    |             |              | 50A = 129 kg |



|   |   |          |          |
|---|---|----------|----------|
| PROJETO                                 | ESTRUTURAÇÃO DA REDE DE SERVIÇOS DO SISTEMA ÚNICO DE ASSISTÊNCIA SOCIAL - SUAS - CONSTRUÇÃO DE CENTRO DE REFERÊNCIA ESPECIALIZADO DE ASSISTÊNCIA SOCIAL (CREAS) |          |          |
| ADMINISTRAÇÃO                           | JOÃO MEDEIROS CAMPELO   |          |          |
| ENDEREÇO                                | MUNICÍPIO DE ITAMARATI-AMAZONAS   |          |          |
| TÍTULO                                  | ESTRUTURAL - ARMAÇÃO VIGAS MEZANINO   |          |          |
| RESPONSÁVEL TÉCNICO                     | DESENHO   | DATA     | ESCALA   |
| ENGº DENIS BOTELHO<br>CREA: 18473 -D/AM | ADENAUER GANDRA   | AGO/2024 | INDICADA |
| PRINCHA                                 |   |          | 07/16    |