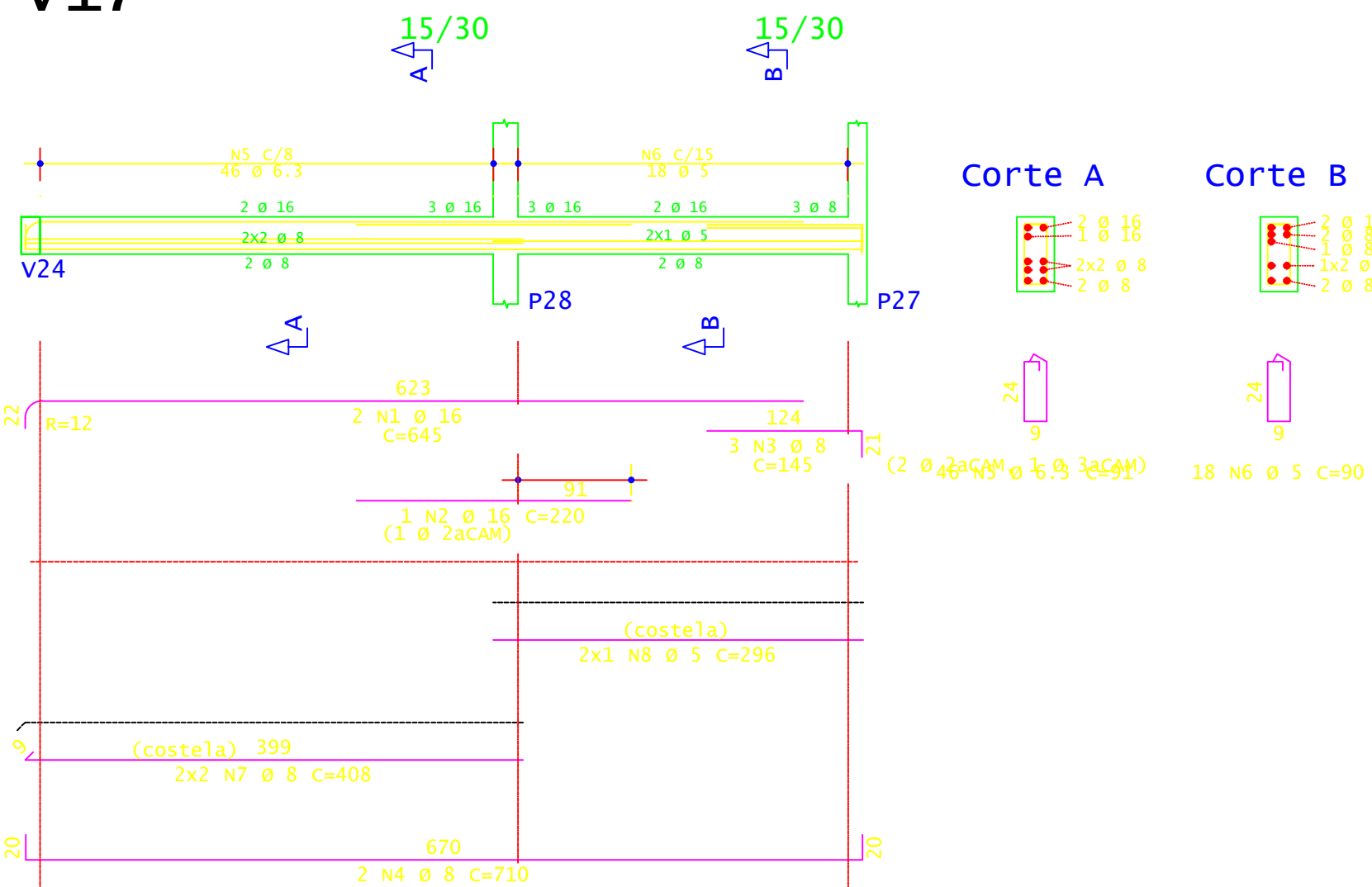
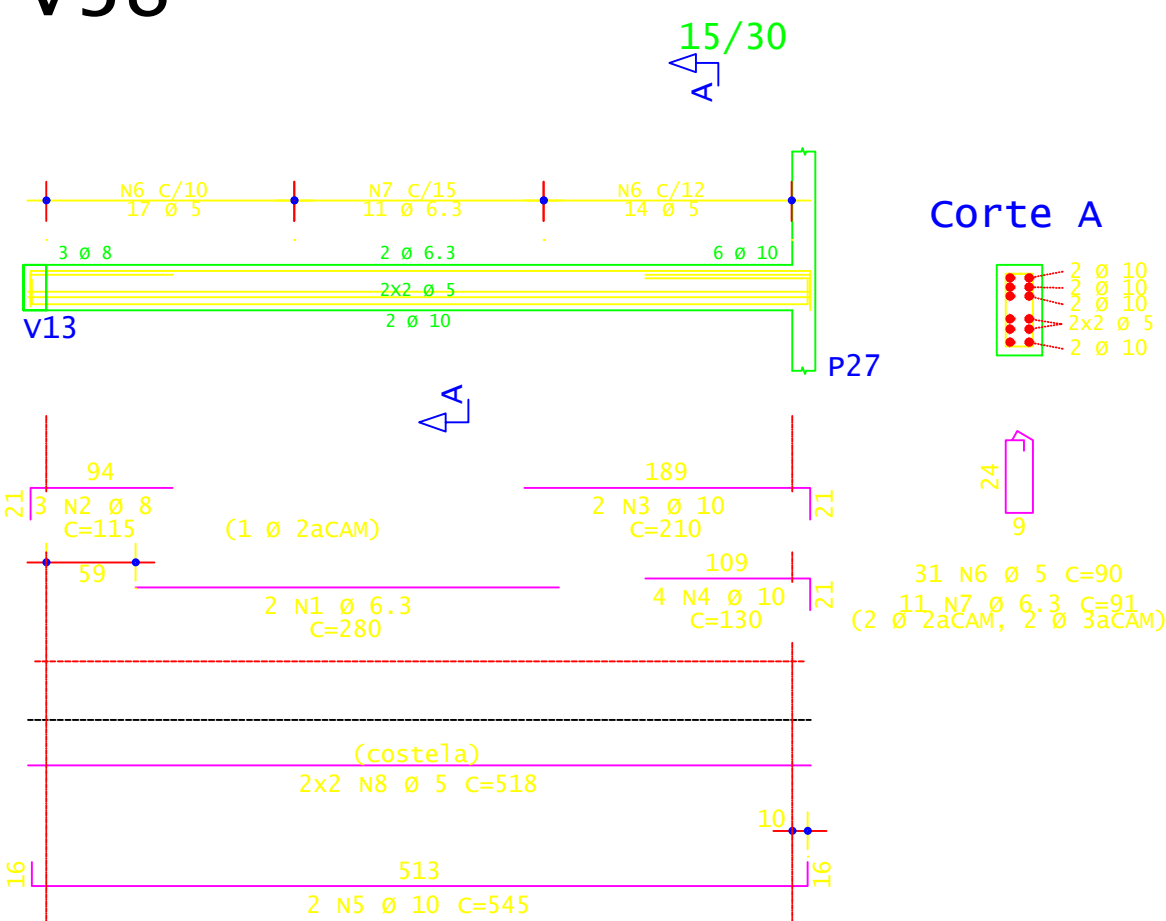


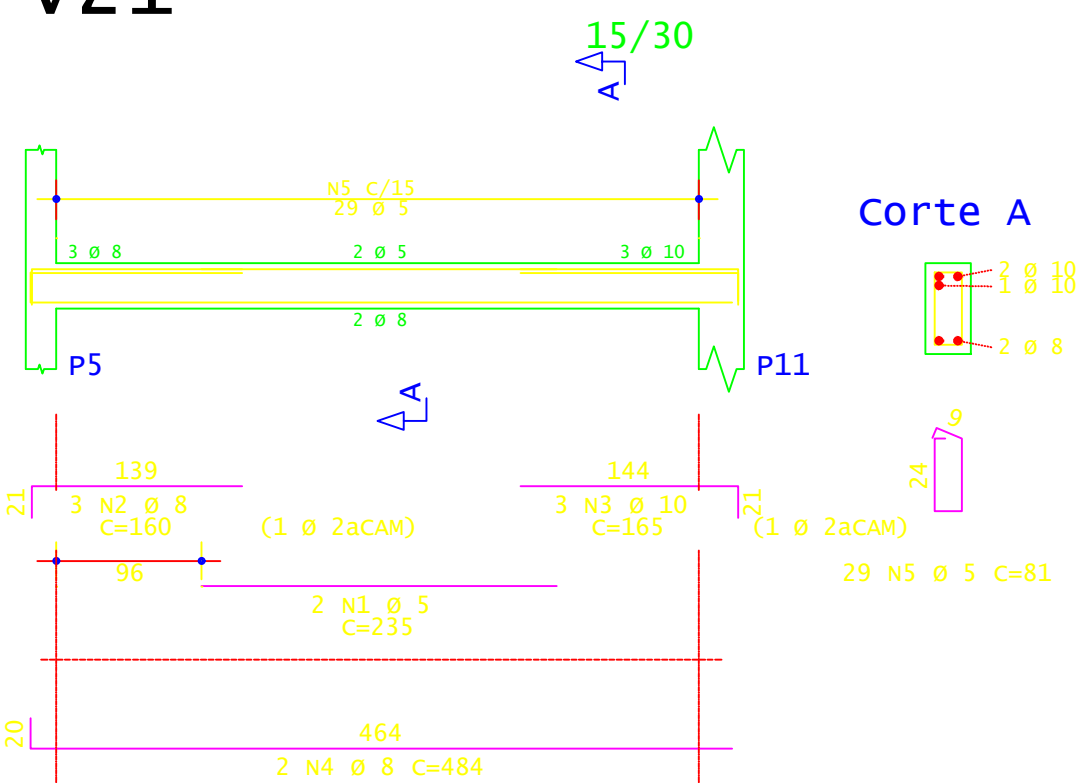
v17



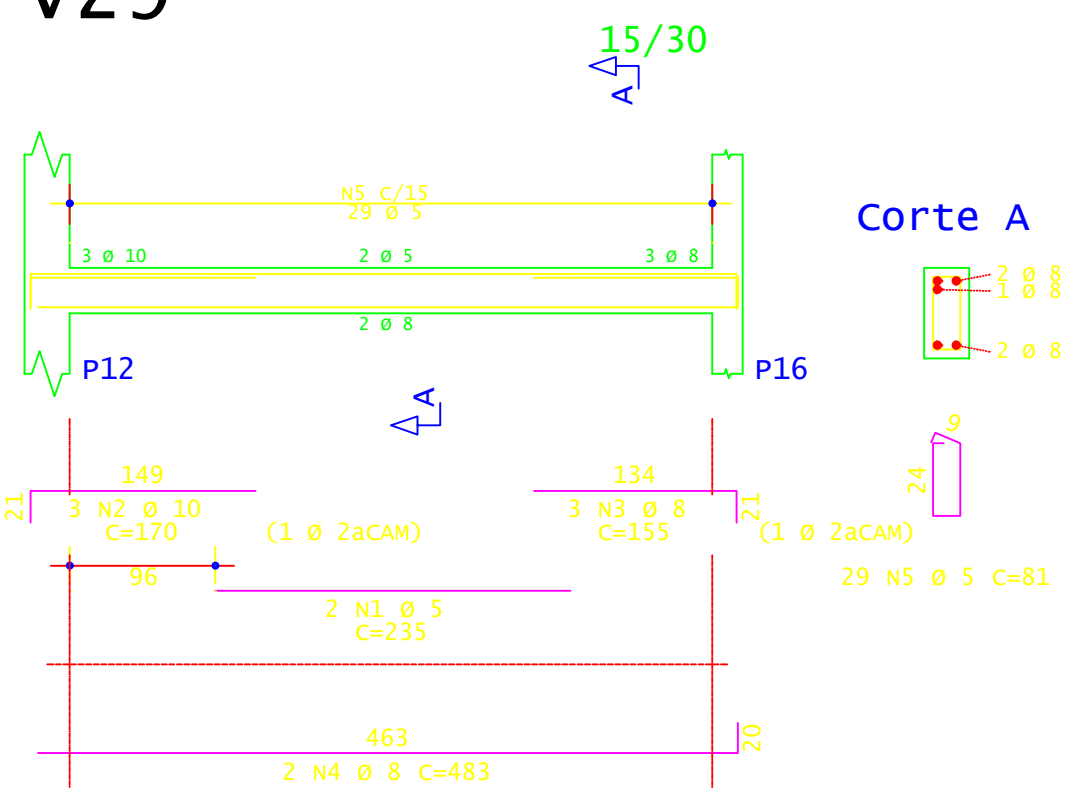
v38



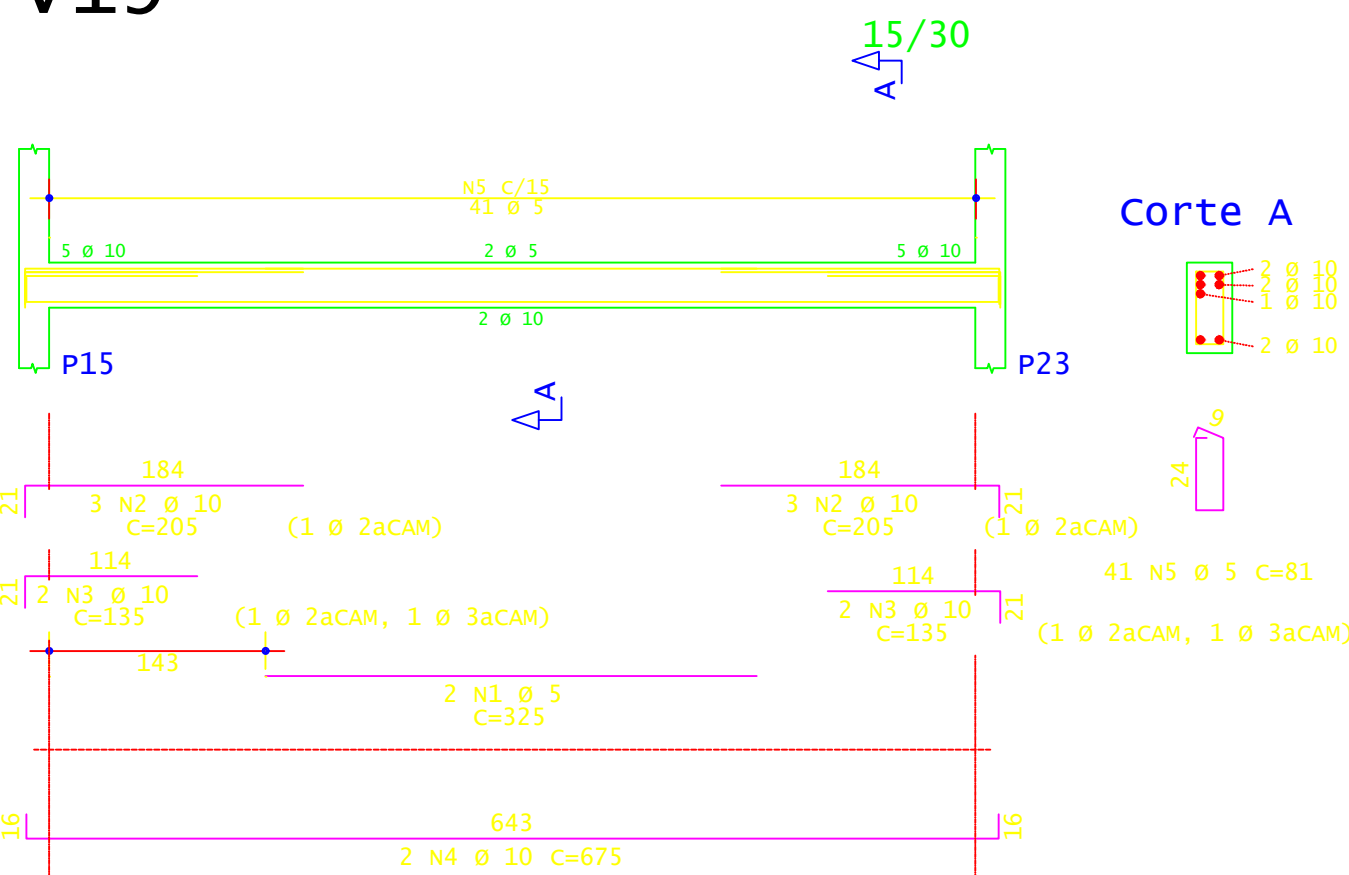
v21



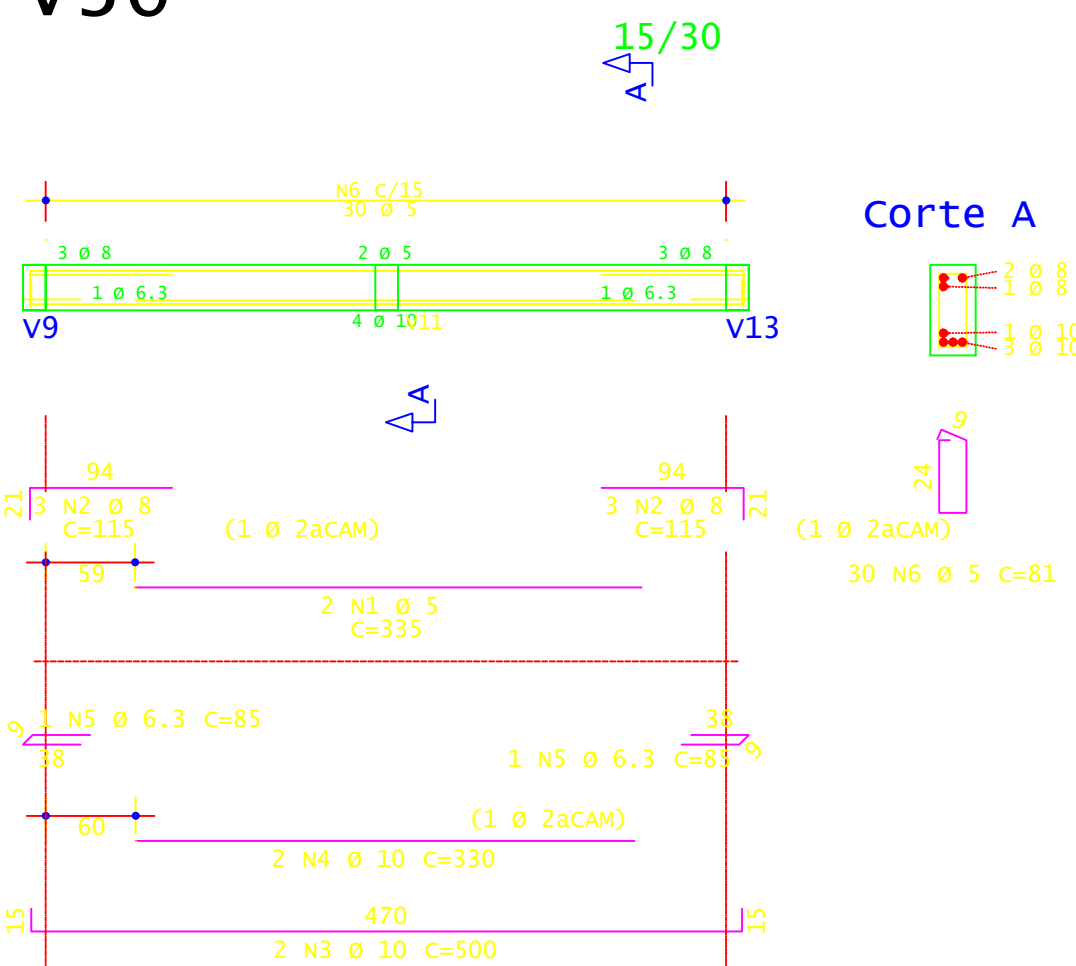
v29



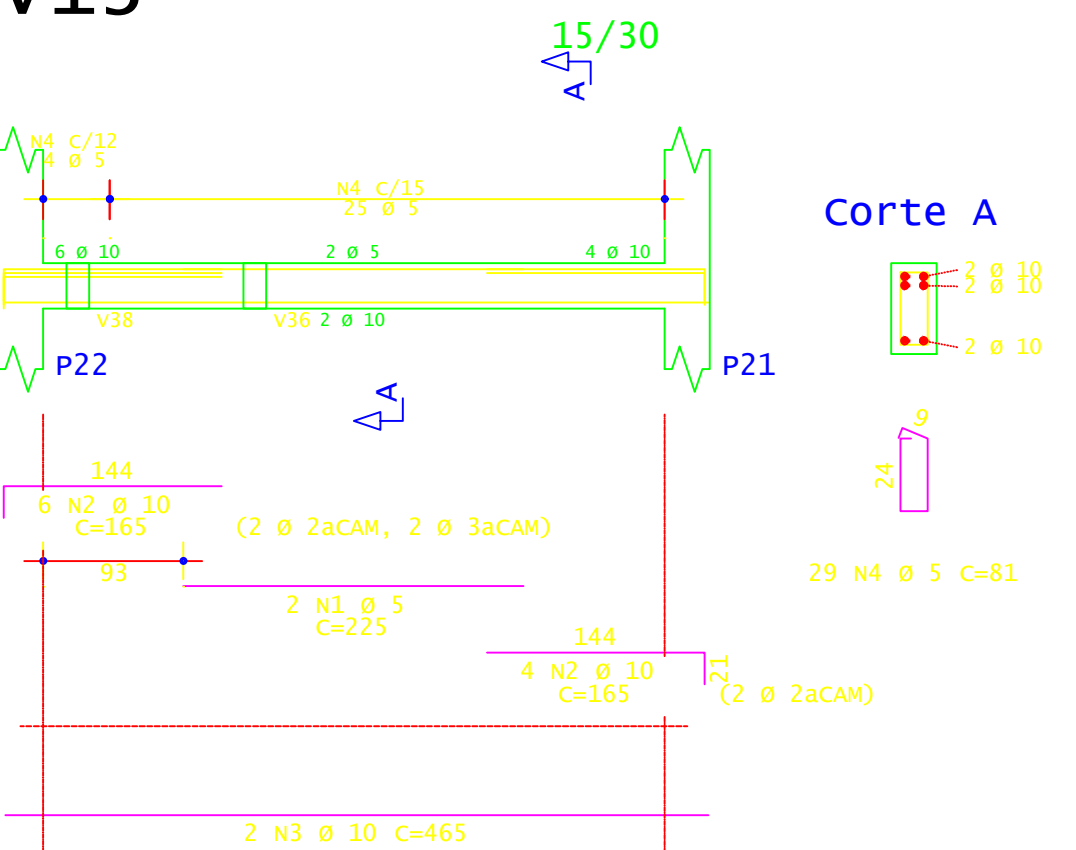
v19



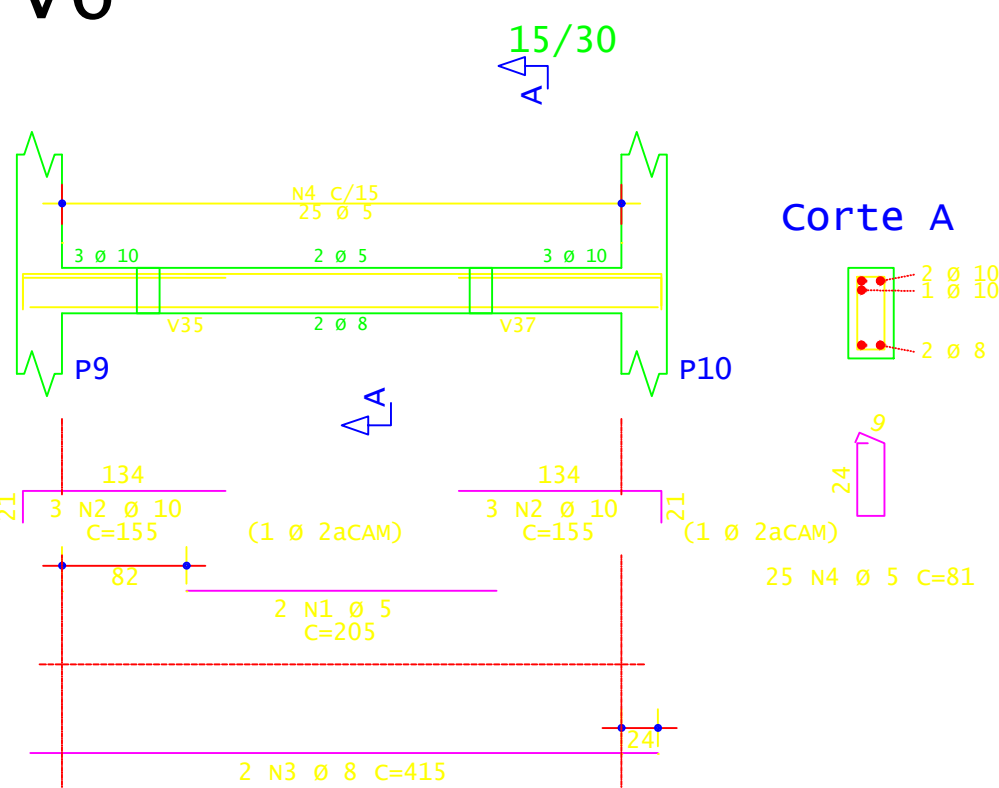
v36



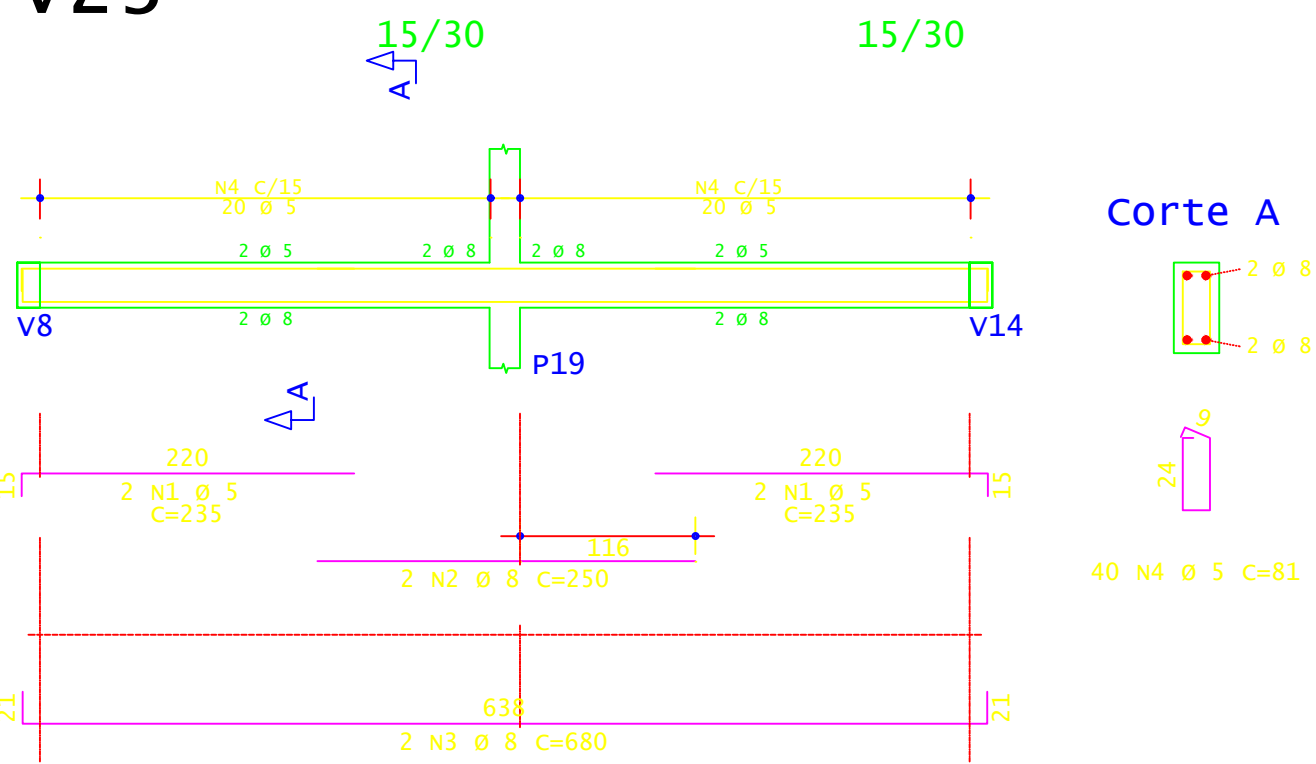
v13



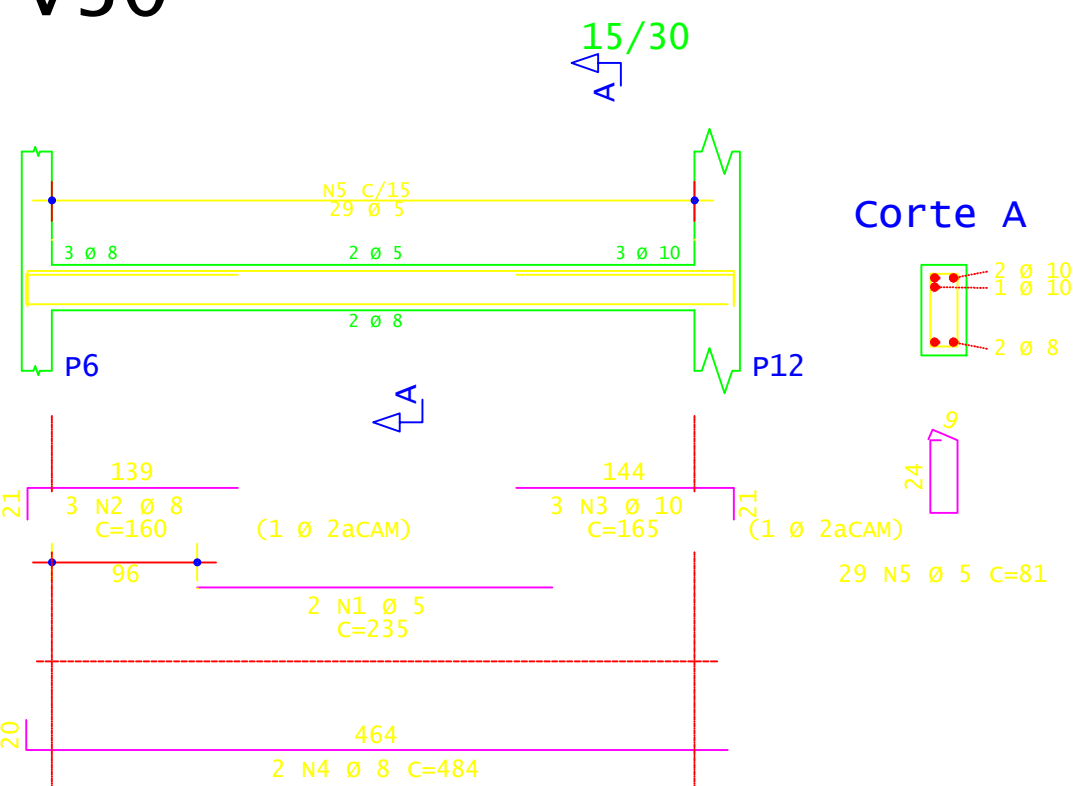
v6



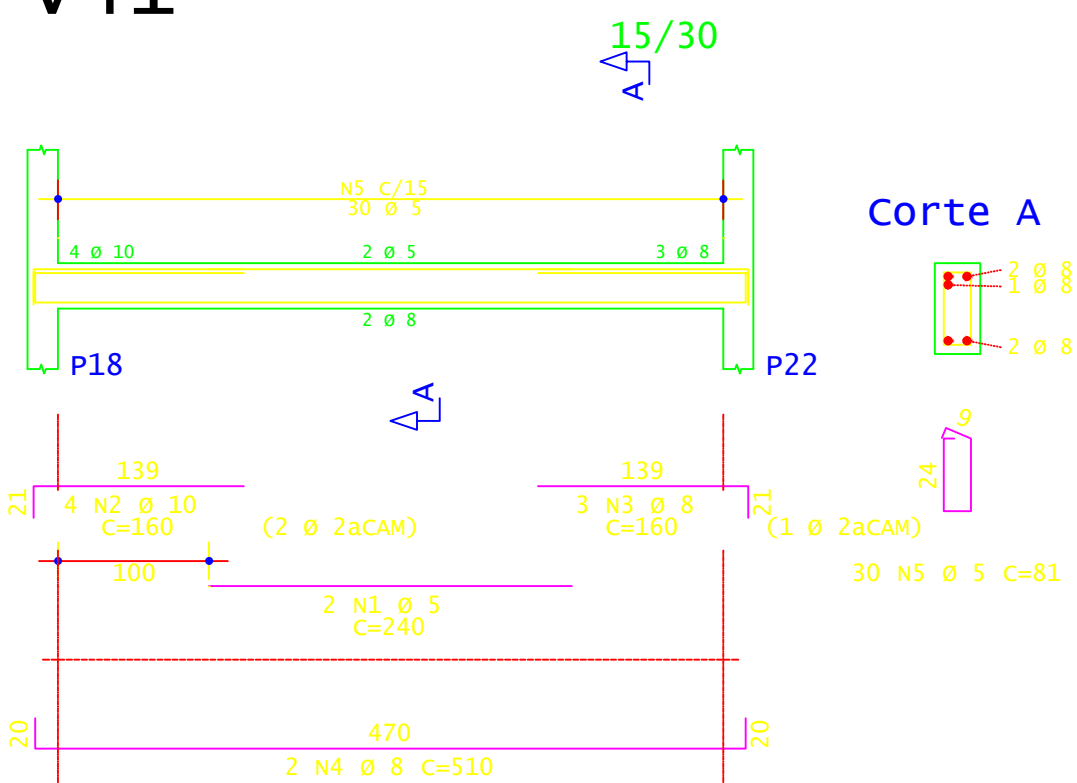
v23



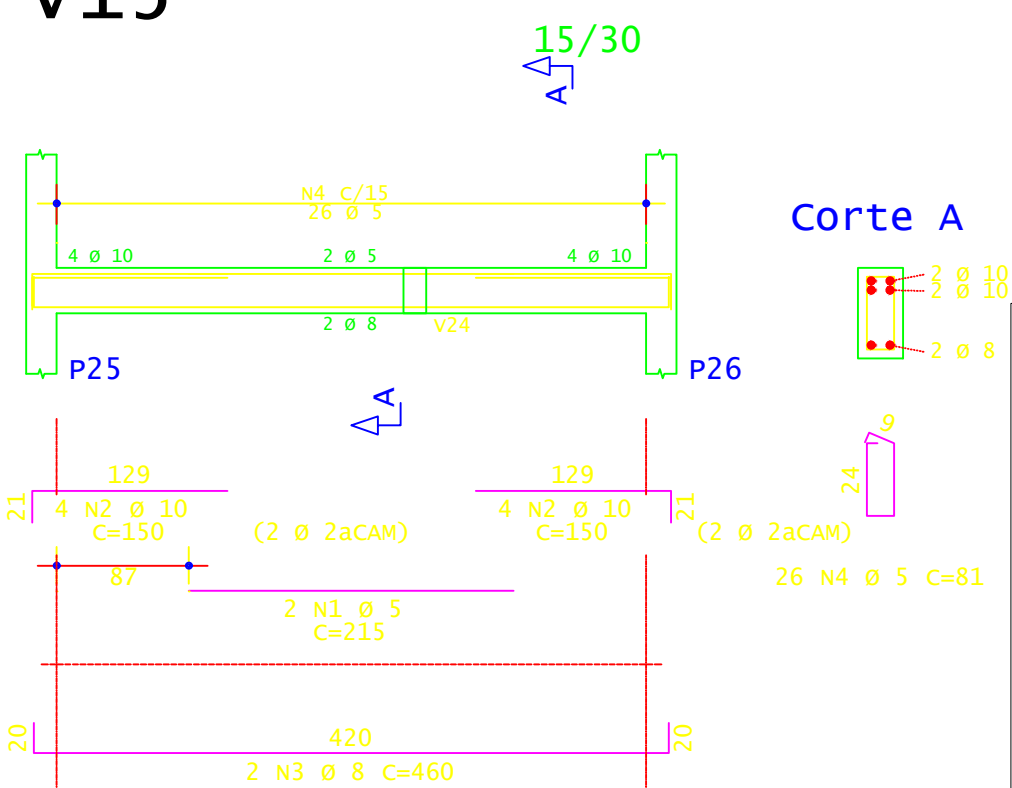
v30



v41



v15




	ACO	POS	BIT (mm)	QUANT	COMPRMENTO	
					UNIT (cm)	TOTAL (cm)
V6	60A	1	5	2	205	410
	50A	2	10	6	155	930
	50A	3	8	2	415	830
	60A	4	5	25	81	2025
V13	60A	1	5	2	225	450
	50A	2	10	2	165	1650
	50A	3	10	2	465	930
	60A	4	5	29	81	2349
V15	60A	1	5	2	215	430
	50A	2	10	8	150	1200
	50A	3	8	2	460	920
	60A	4	5	26	81	2106
V16	60A	1	5	2	230	460
	50A	2	8	5	165	825
	50A	3	8	2	474	948
	60A	4	5	28	81	2268
V17	50A	1	16	2	645	1290
	50A	2	8	1	220	220
	50A	3	8	3	145	435
	50A	4	8	2	710	1420
	50A	5	6.3	46	91	4186
	60A	6	5	18	90	1620
	50A	7	8	4	408	1632
V19	60A	8	5	2	296	592
	60A	1	5	2	325	650
	50A	2	10	6	205	1230
	50A	3	10	4	135	540
V20	50A	4	10	2	675	1350
	60A	5	5	41	81	3321
	60A	1	5	2	235	470
	50A	2	8	2	170	340
V21	50A	3	10	4	155	620
	50A	4	8	2	483	966
	60A	5	5	29	81	2349
	60A	1	5	2	235	470
V22	50A	2	8	3	160	480
	50A	3	10	3	165	495
	50A	4	8	2	484	968
	60A	5	5	29	81	2349
V23	60A	1	5	4	235	940
	50A	2	8	2	250	500
	50A	3	8	2	680	1360
	60A	4	5	40	81	3240
V29	60A	1	5	2	235	470
	50A	2	10	3	170	510
	50A	3	8	3	155	465
	50A	4	8	2	483	966
V30	60A	5	5	29	81	2349
	60A	1	5	2	235	470
	50A	2	8	3	160	480
	50A	3	10	3	165	495
V31	50A	4	8	2	484	968
	60A	5	5	29	81	2349
	60A	1	5	2	370	740
	50A	2	10	5	160	800
V36	50A	3	10	2	500	1000
	50A	4	10	1	281	820
	60A	5	5	30	81	2430
	60A	1	5	2	335	670
V38	50A	2	8	6	115	690
	50A	3	10	2	500	1000
	50A	4	10	2	330	660
	50A	5	6.3	2	85	170
	60A	6	5	30	81	2430
	50A	1	6.3	2	280	560
	50A	2	8	3	115	345
V41	50A	3	10	2	210	420
	50A	4	10	4	130	520
	50A	5	10	2	545	1090
V41	50A	6	5	31	90	2790
	50A	7	6.3	11	91	1001
	60A	8	5	4	518	2072
	60A	1	5	2	240	480
	50A	2	10	4	160	640
	50A	3	8	3	160	480
	50A	4	8	2	510	1020
60A	5	5	30	81	2430	

RESUMO DE AÇO				
AÇO	BIT (mm)	COMPR (m)	PESO (kg)	
60A		462		71
50A	6,3	59		14
50A	8	170		67
50A	10	163		101
50A	16	15		24
Peso Total		60A =	71 kg	
Peso Total		50A =	206 kg	



PROJETO		ESTRUTURAÇÃO DA REDE DE SERVIÇOS DO SISTEMA ÚNICO DE ASSISTÊNCIA SOCIAL - SUAS - CONSTRUÇÃO DE CENTRO DE REFERÊNCIA ESPECIALIZADA DE ASSISTÊNCIA SOCIAL (CREAS)	
ADMINISTRAÇÃO		JOÃO MEDEIROS CAMPELO	
ENDEREÇO		MUNICÍPIO DE ITAMARATI-AMAZONS	
TÍTULO		ESTRUTURAL - ARMAÇÃO VIGAS TÉRREO	
RESPONSÁVEL TÉCNICO ENG.º DENIS BOTELHO CREA: 18473-D/AM		DESENHO ADENAUER GANDRA	DATA AGO/2024



REVISÃO

ESCALA
INDICADA

PRANCHA
14/ 16