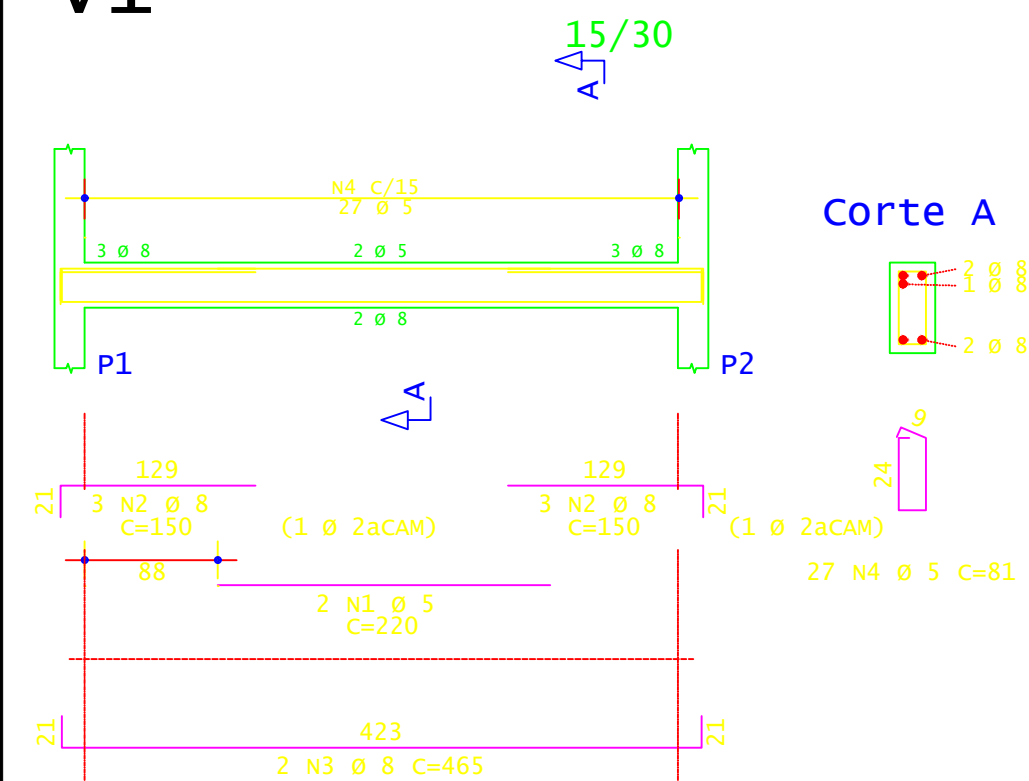
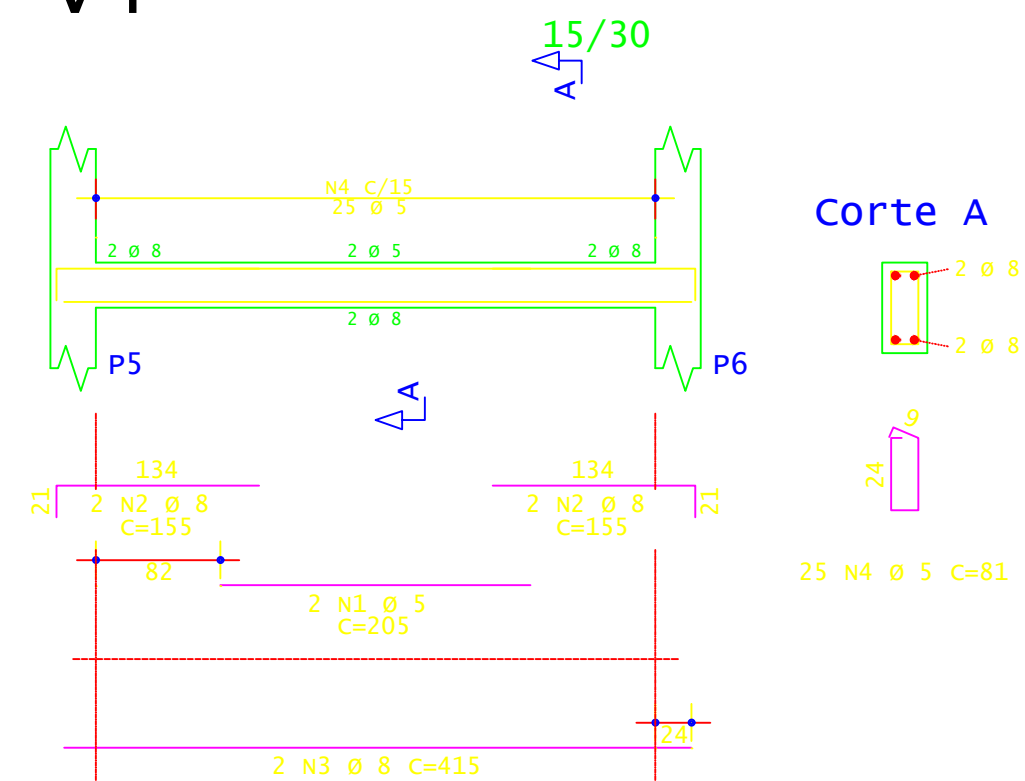


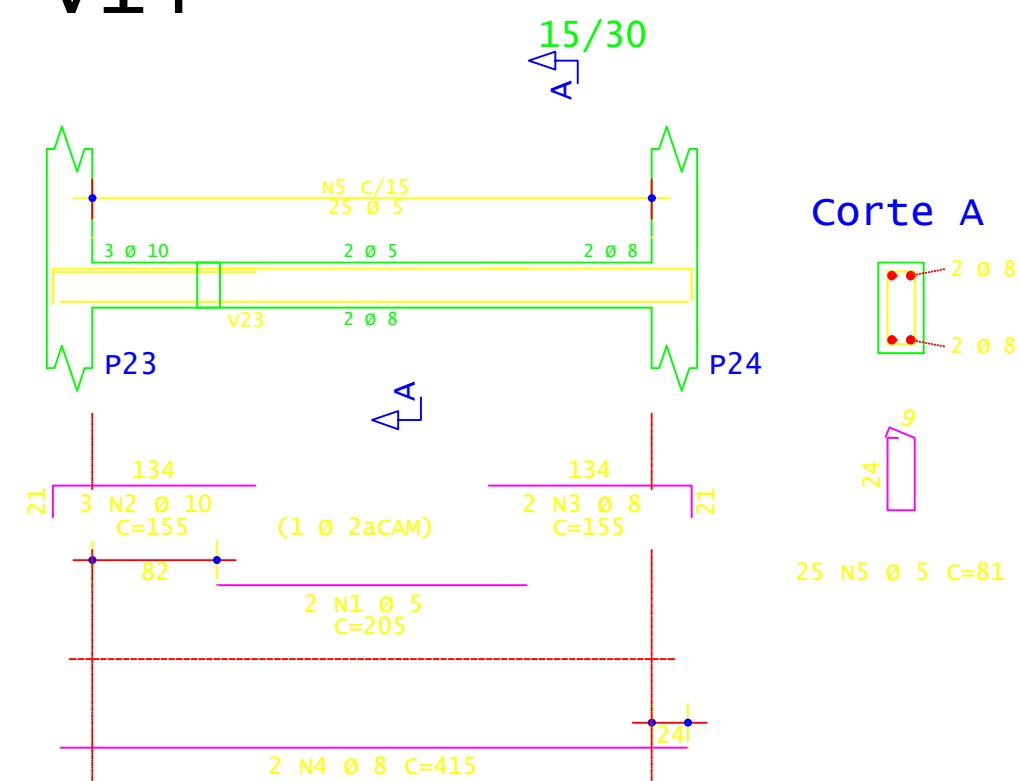
v1



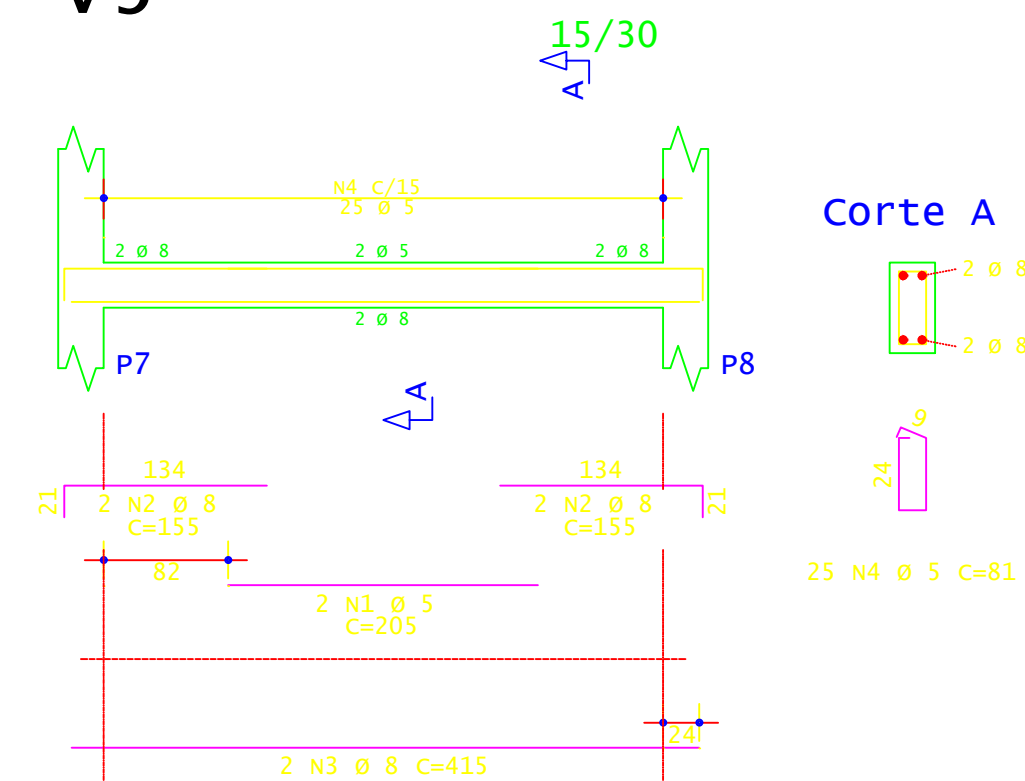
v4



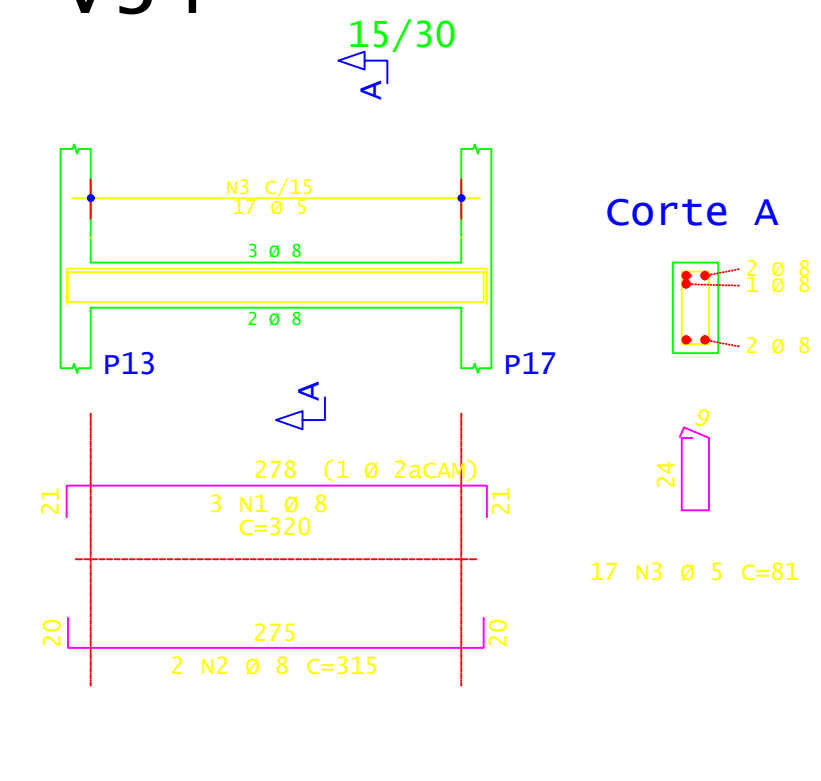
v14



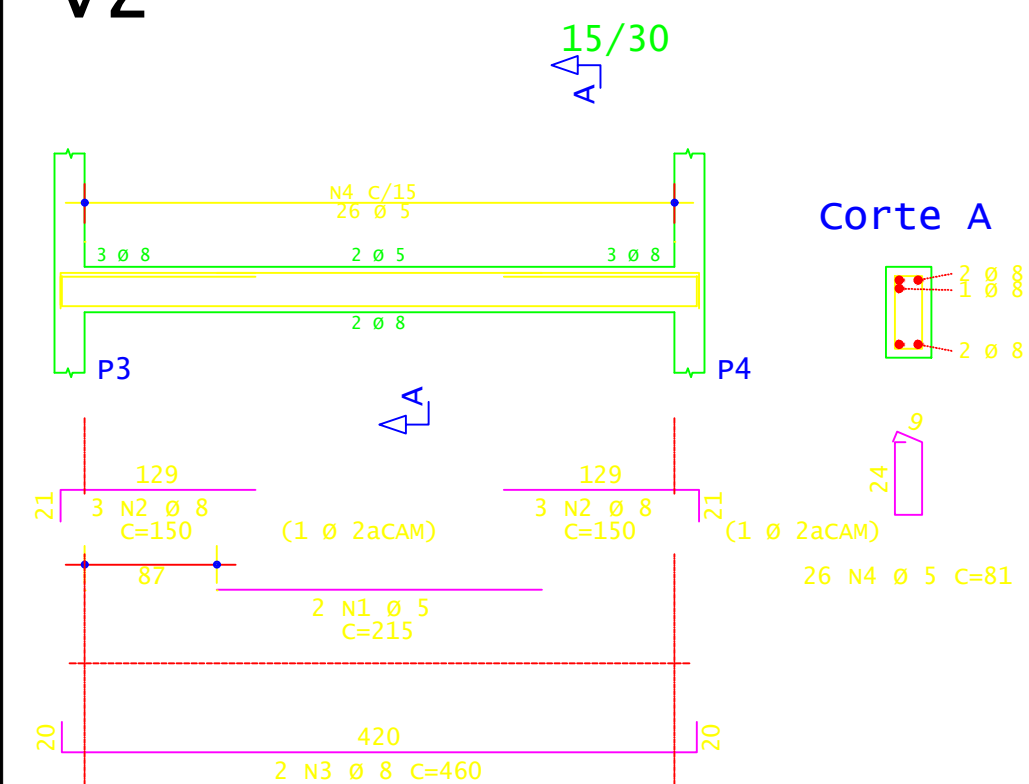
v5



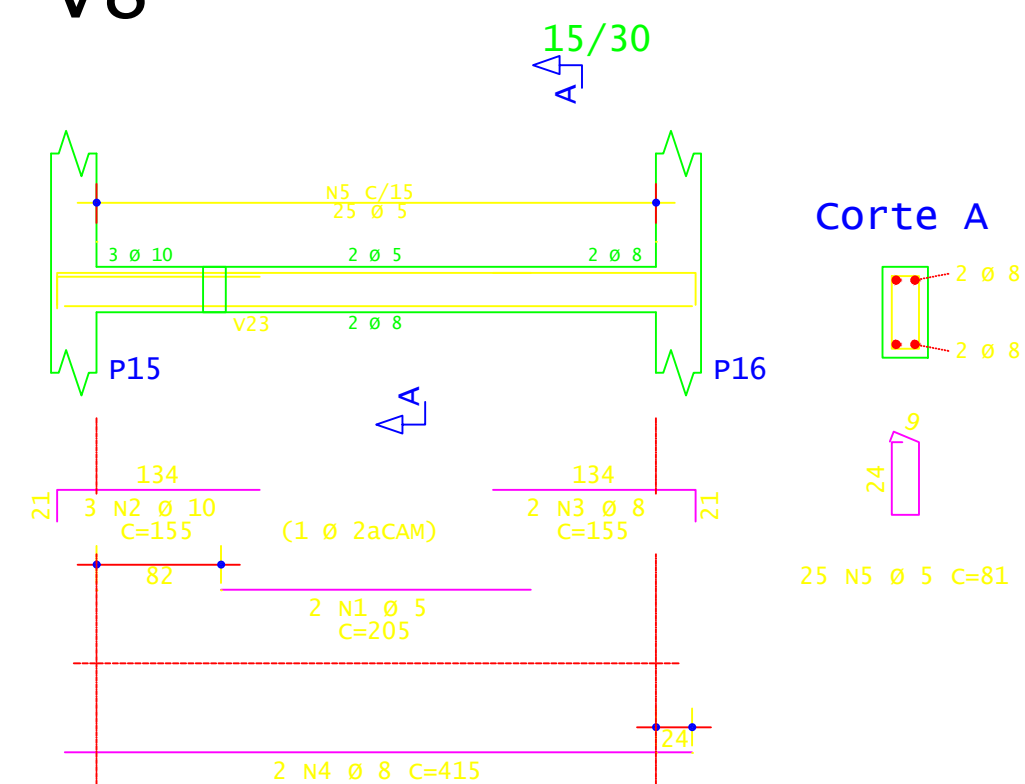
v34



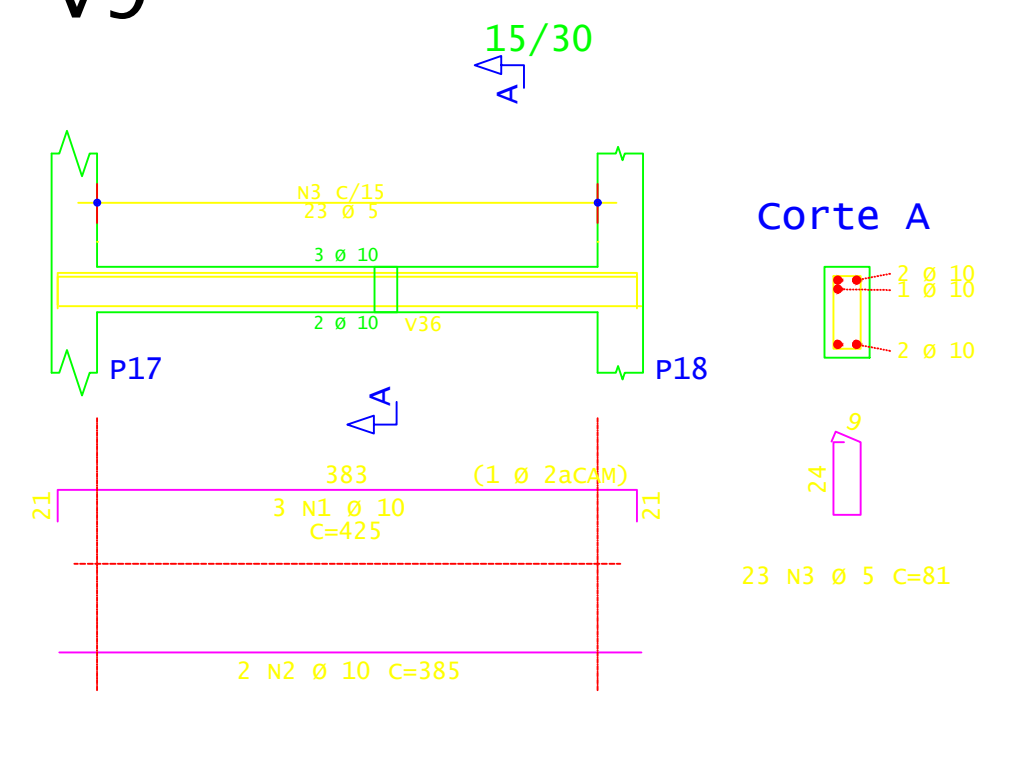
v2



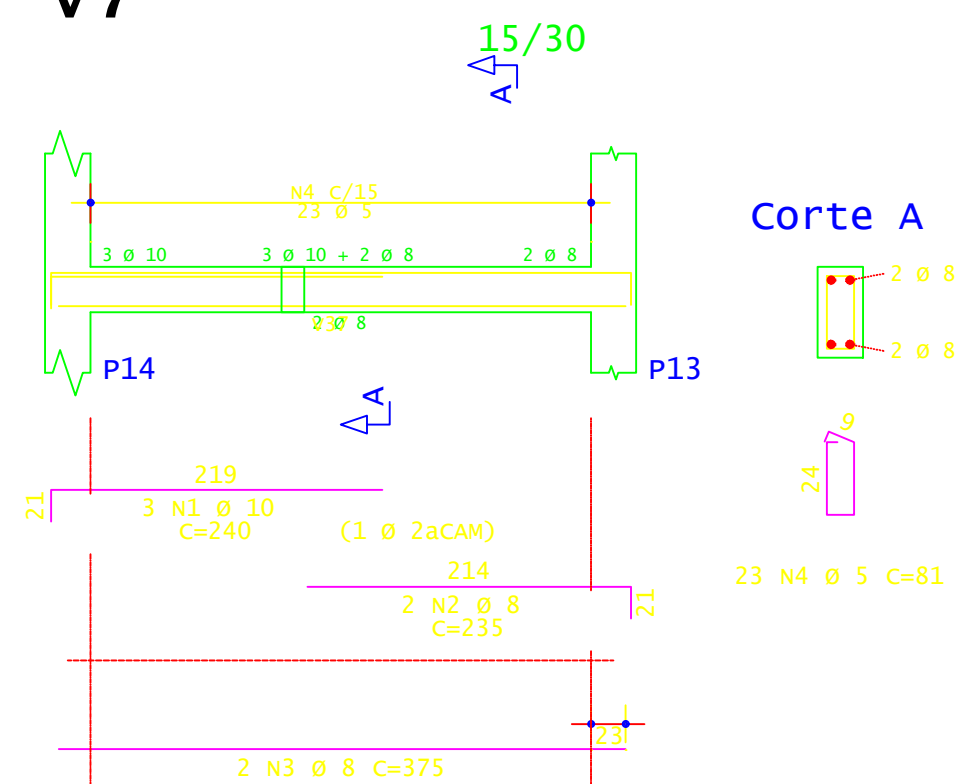
v8



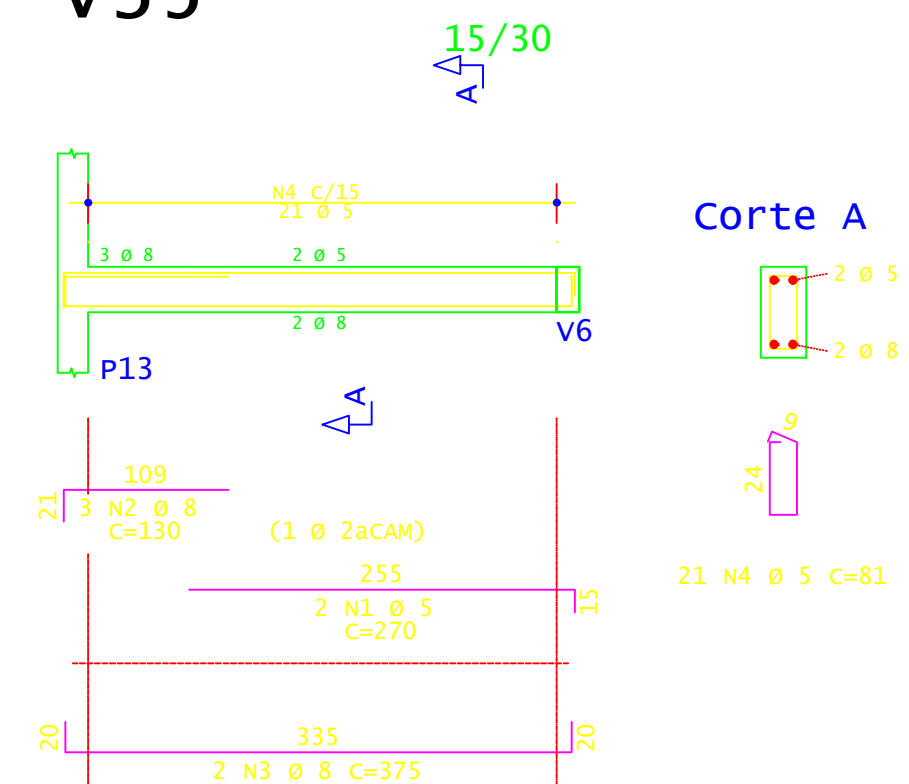
v9



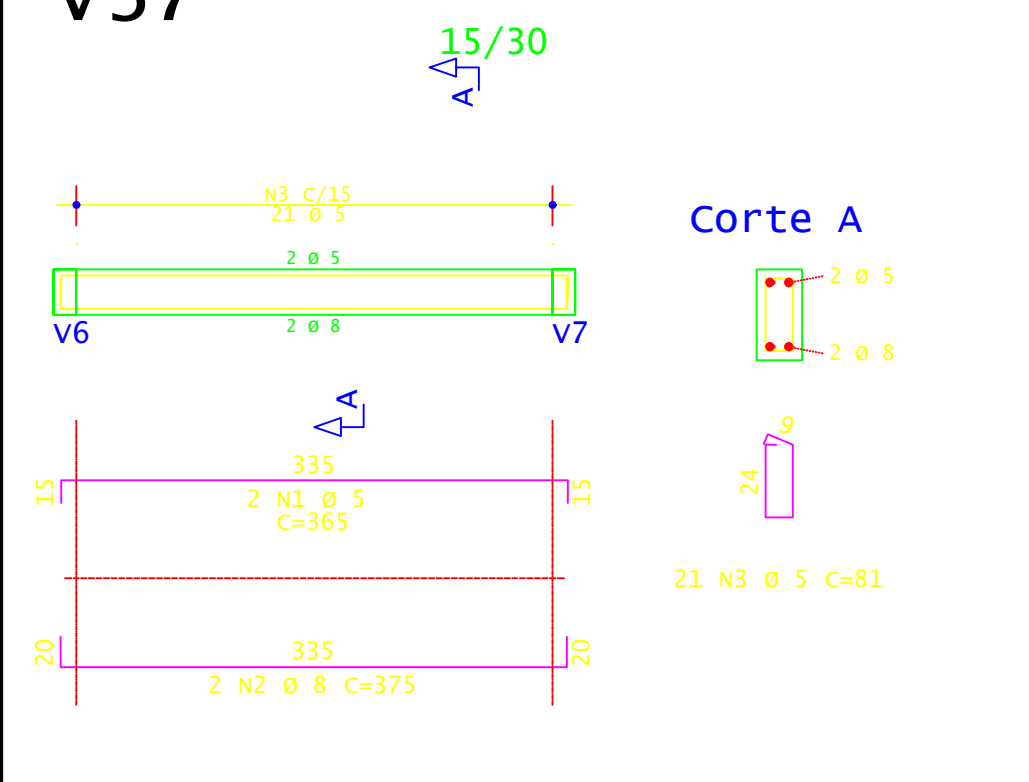
v7



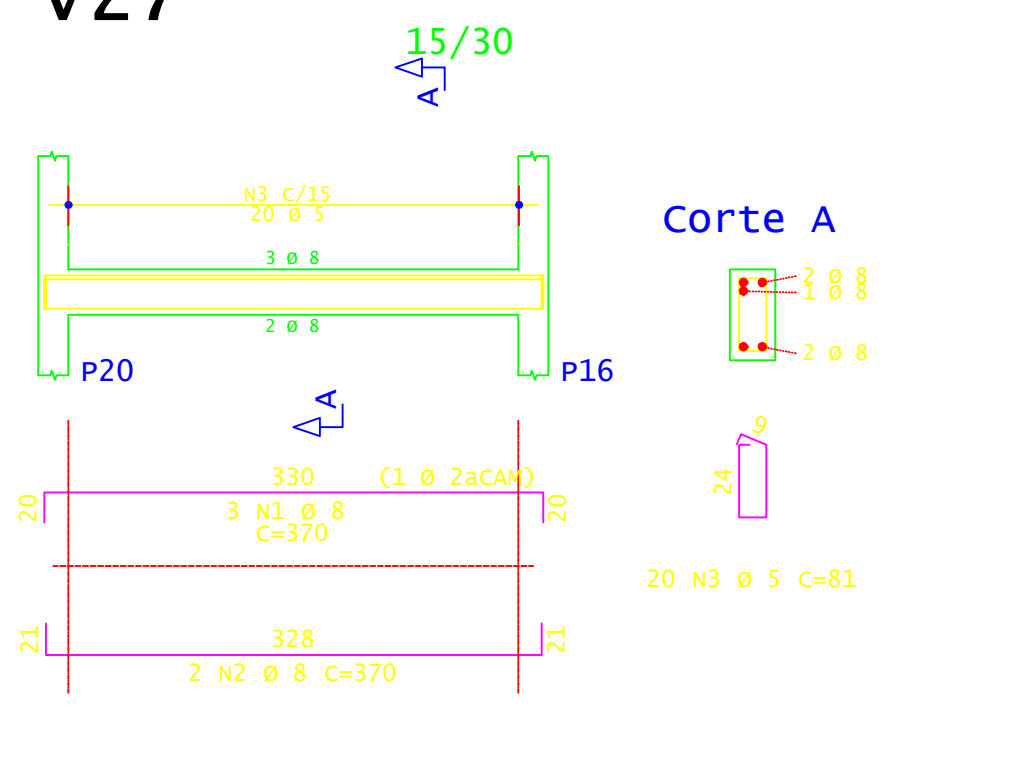
v35



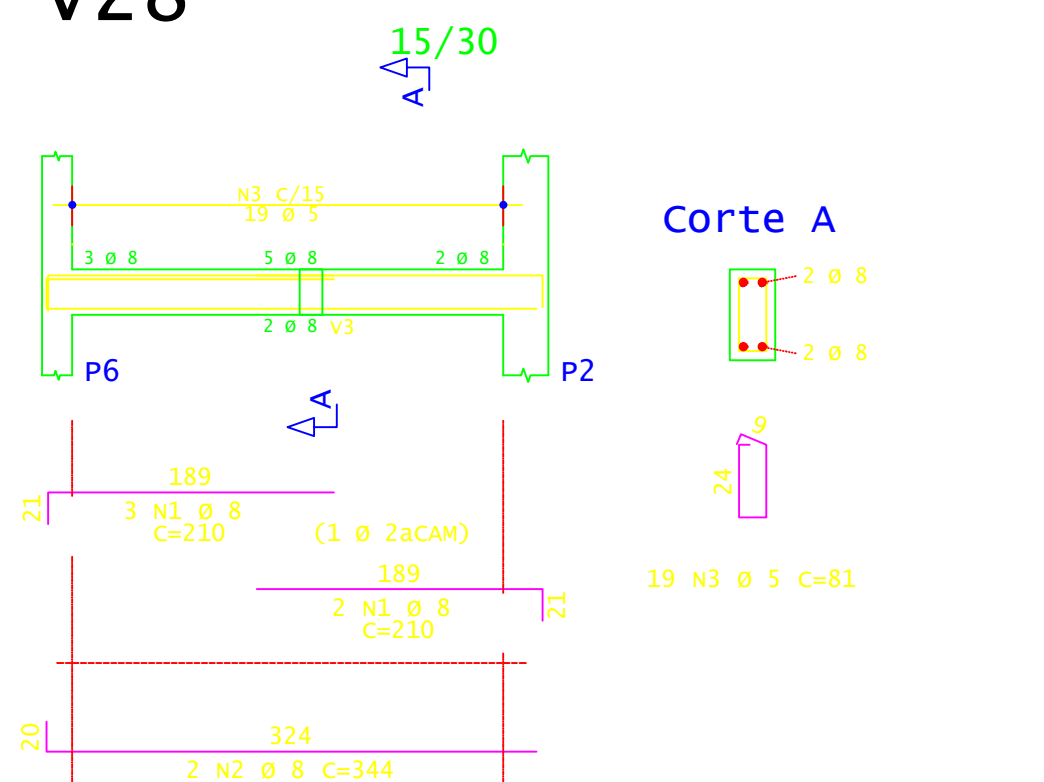
v37



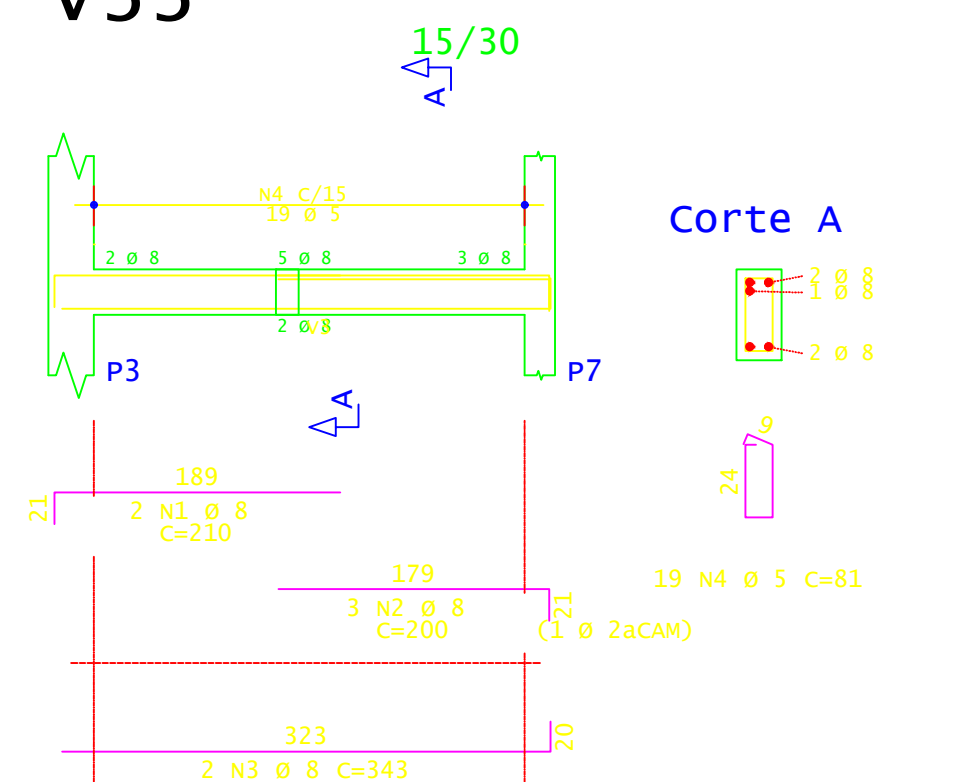
v27



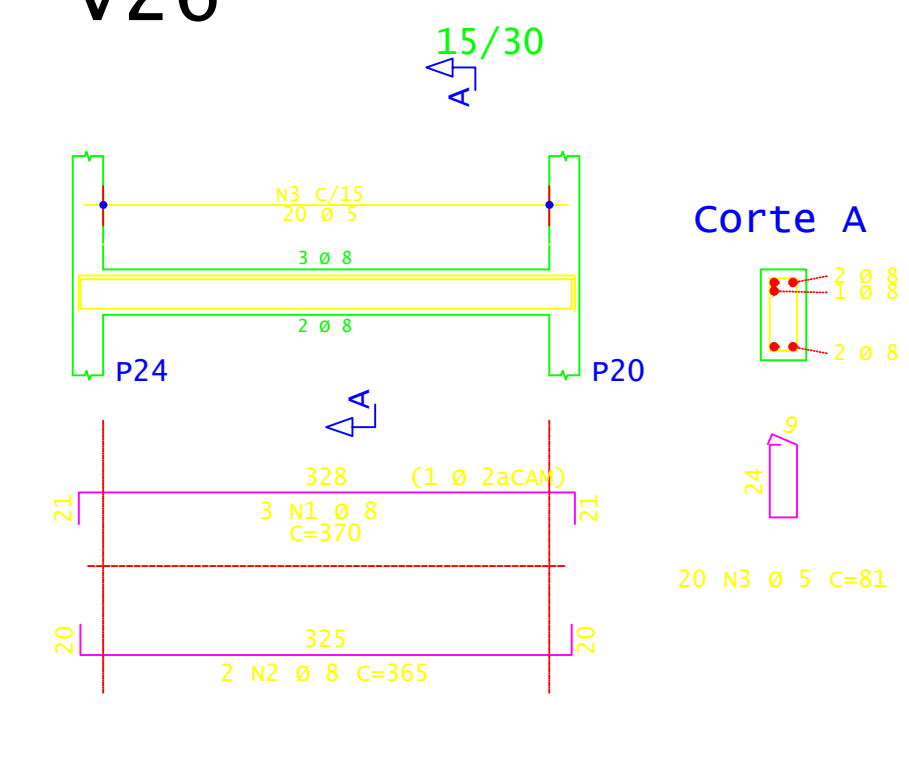
v28



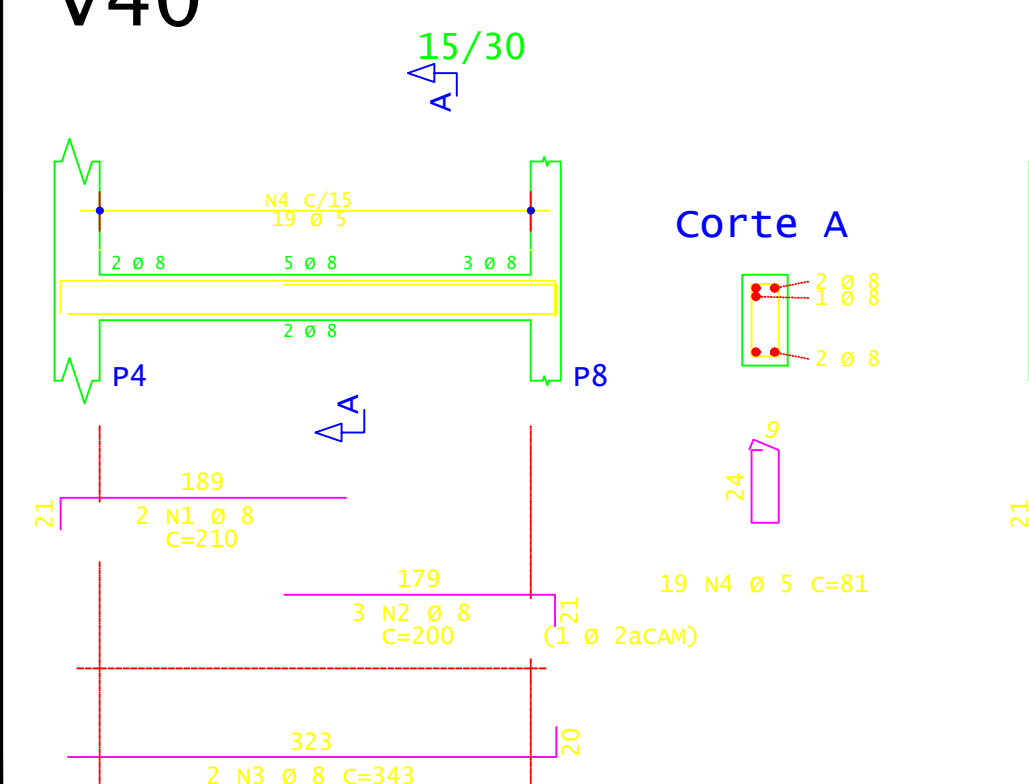
v33



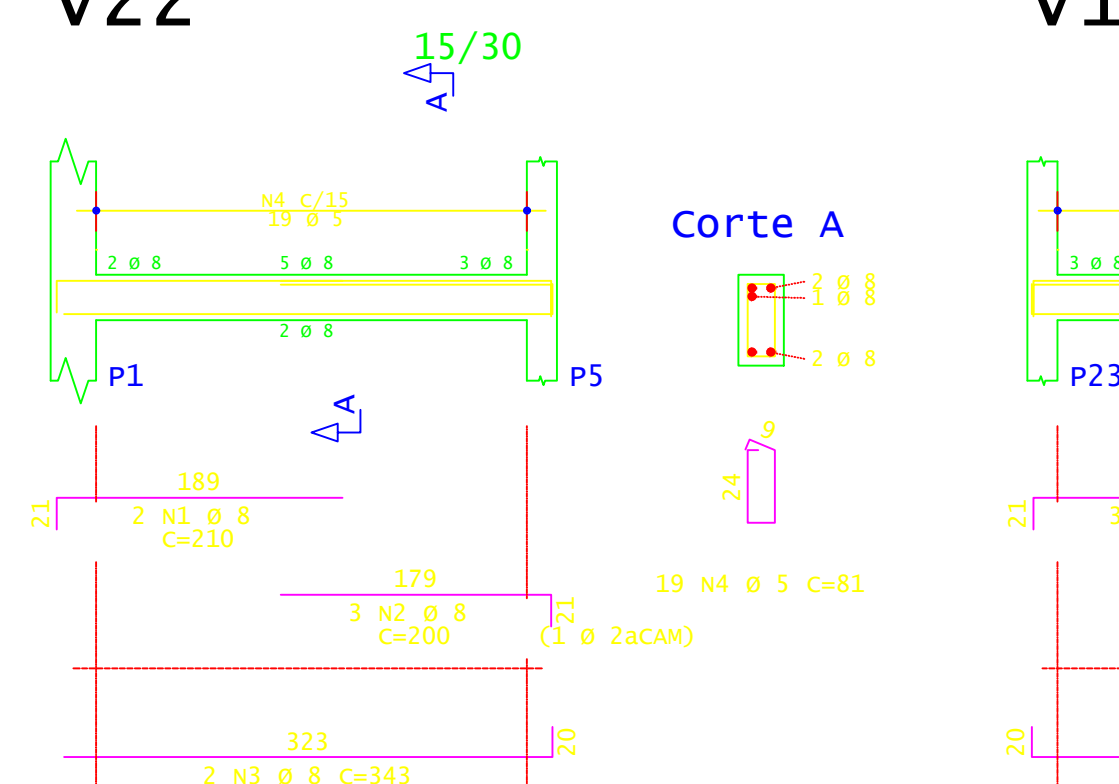
v26



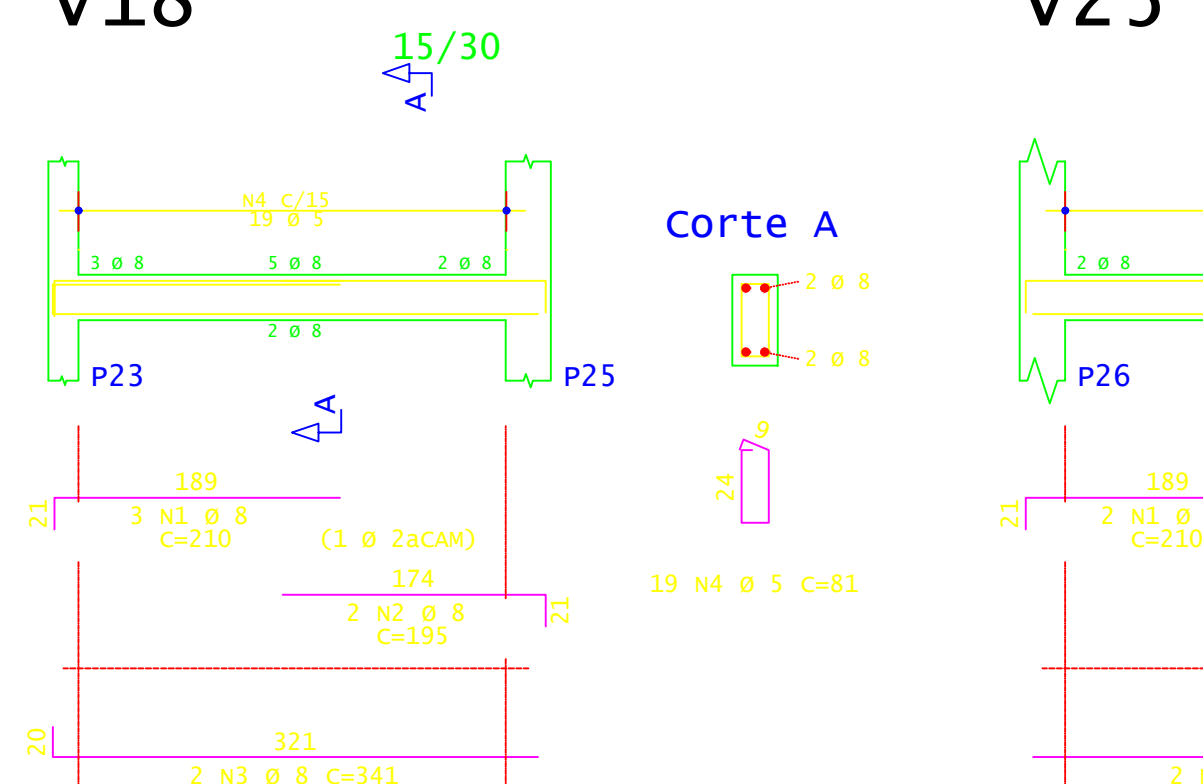
v40



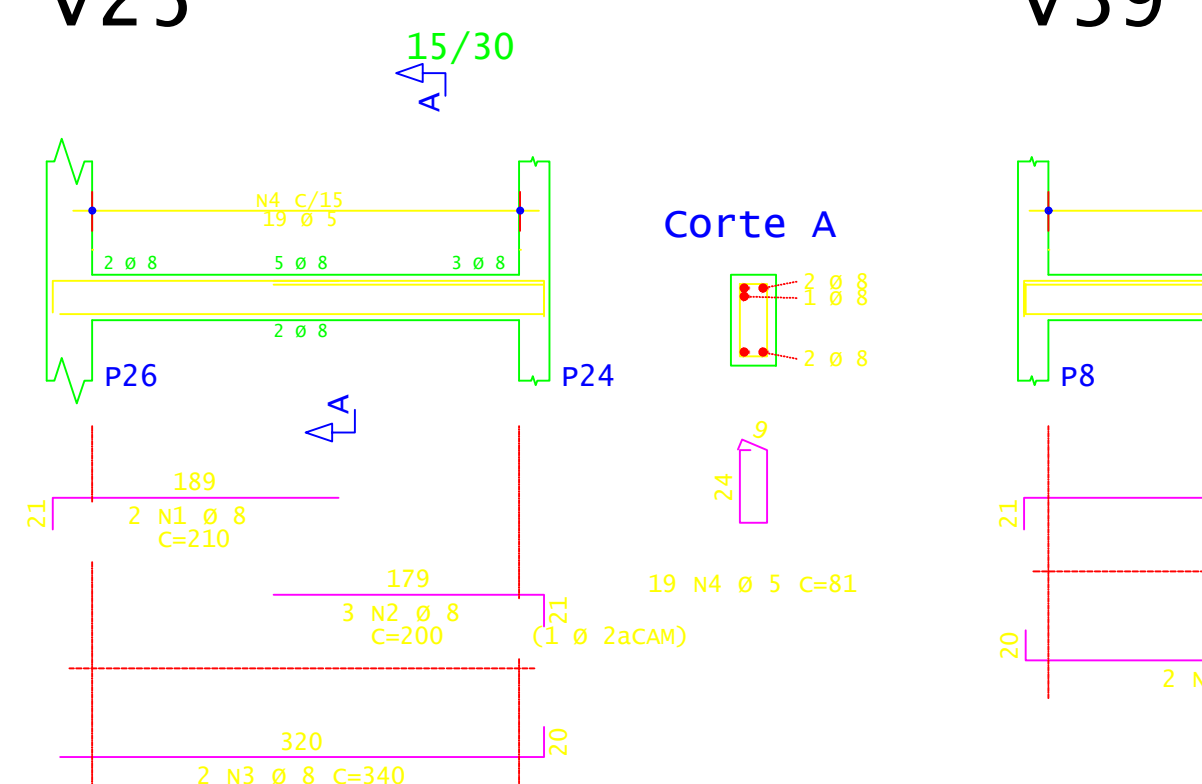
v22



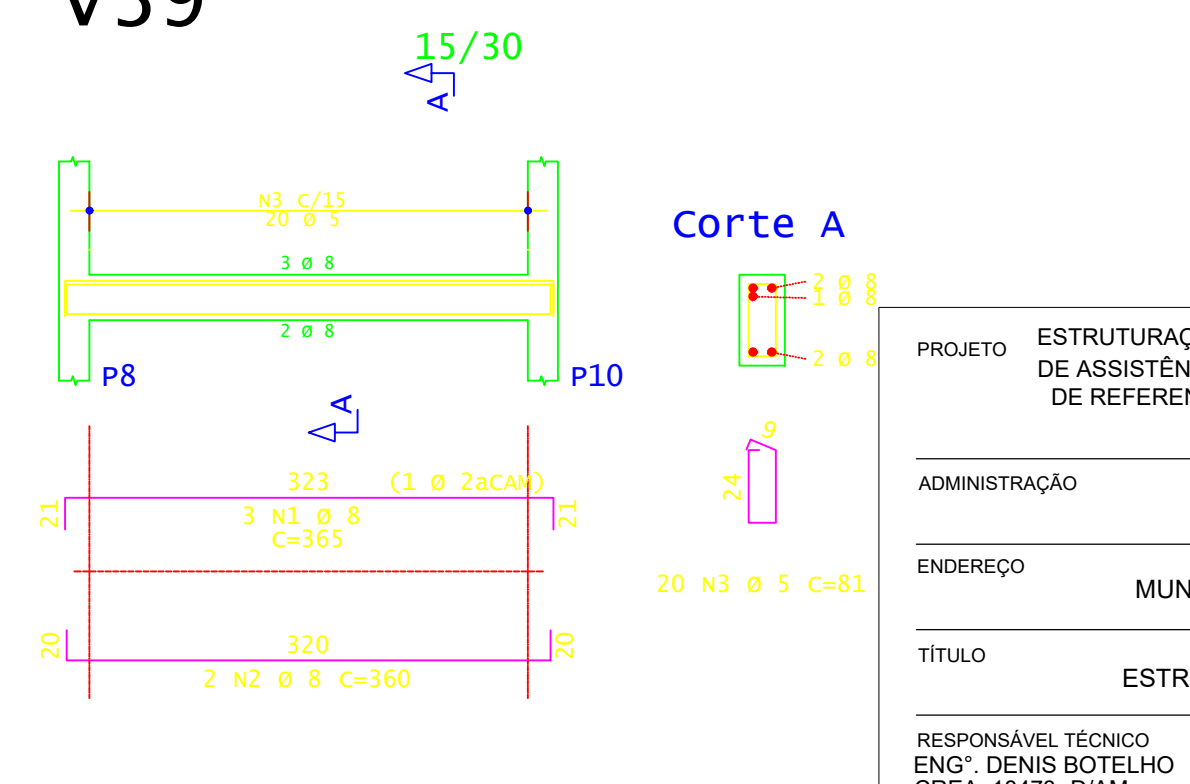
v18



v25




v39



	AÇO	POS	BIT (mm)	QUANT	COMPRIMENTO	
					UNIT (cm)	TOTAL (cm)
V1	60A	1	5	2	220	440
	50A	2	8	6	150	900
	50A	3	8	2	465	930
	60A	4	5	27	81	2187
V2	60A	1	5	2	215	430
	50A	2	8	6	150	900
	50A	3	8	2	460	920
	60A	4	5	26	81	2106
V4	60A	1	5	2	205	410
	50A	2	8	4	155	620
	50A	3	8	2	415	830
	60A	4	5	25	81	2025
V5	60A	1	5	2	205	410
	50A	2	8	4	155	620
	50A	3	8	2	415	830
	60A	4	5	25	81	2025
V7	50A	1	10	3	240	720
	50A	2	8	2	235	470
	50A	3	8	2	375	750
	60A	4	5	23	81	1863
V8	60A	1	5	2	205	410
	50A	2	10	3	155	465
	50A	3	8	2	155	310
	60A	4	8	2	415	830
V9	60A	5	5	25	81	2025
	50A	1	10	3	425	1275
	50A	2	10	2	385	770
	60A	3	5	23	81	1863
V14	60A	1	5	2	205	410
	50A	2	10	3	155	465
	50A	3	8	2	155	310
	60A	4	8	2	415	830
V18	60A	5	5	25	81	2025
	50A	1	8	3	210	630
	50A	2	8	2	195	390
	50A	3	8	2	341	682
V22	60A	4	5	19	81	1539
	50A	1	8	2	210	420
	50A	2	8	3	200	600
	50A	3	8	2	343	686
V25	60A	4	5	19	81	1539
	50A	1	8	2	210	420
	50A	2	8	3	200	600
	50A	3	8	2	340	680
V26	60A	4	5	19	81	1539
	50A	1	8	3	370	1110
	50A	2	8	2	365	730
	60A	3	5	20	81	1620
V27	50A	1	8	3	370	1110
	50A	2	8	2	370	740
	60A	3	5	20	81	1620
	50A	1	8	5	210	1050
V33	50A	2	8	2	344	688
	60A	3	5	19	81	1539
	50A	1	8	2	210	420
	50A	2	8	3	200	600
V34	50A	3	8	2	343	686
	60A	4	5	19	81	1539
	50A	1	8	3	320	960
	50A	2	8	2	315	630
V35	60A	3	5	17	81	1377
	60A	1	5	2	270	540
	50A	2	8	3	130	390
	50A	3	8	2	375	750
V37	60A	4	5	21	81	1701
	60A	1	5	2	365	730
	50A	2	8	2	375	750
	60A	3	5	21	81	1701
V39	50A	1	8	3	365	1095
	50A	2	8	2	360	720
	60A	3	5	20	81	1620
	50A	1	8	2	210	420
V40	50A	2	8	3	200	600
	50A	3	8	2	343	686
	60A	4	5	19	81	1539

RESUMO DE AÇO			
AÇO	BIT (mm)	COMPR (m)	PESO (kg)
60A	5	388	60
50A	8	293	116
50A	10	37	23
Peso Total		60A =	60 kg
Peso Total		50A =	139 kg



PROJETO		ESTRUTURAÇÃO DA REDE DE SERVIÇOS DO SISTEMA ÚNICO DE ASSISTÊNCIA SOCIAL - SUAS - CONSTRUÇÃO DE CENTRO DE REFERENCIA ESPECIALIZADO DE ASSISTENCIA SOCIAL (CREAS)		
ADMINISTRAÇÃO		JOÃO MEDEIROS CAMPELO		
ENDEREÇO		MUNICÍPIO DE ITAMARATI-AMAZONAS		
TÍTULO		ESTRUTURAL - ARMAÇÃO VIGAS TERREO		
RESPONSÁVEL TÉCNICO ENG.º DENIS BOTELHO CREA: 18473 -D/AM		DESENHO ADENAUER GANDRA	DATA AGO/2024	REVISÃO
				ESCALA INDICADA
				PRANCHA 15/16