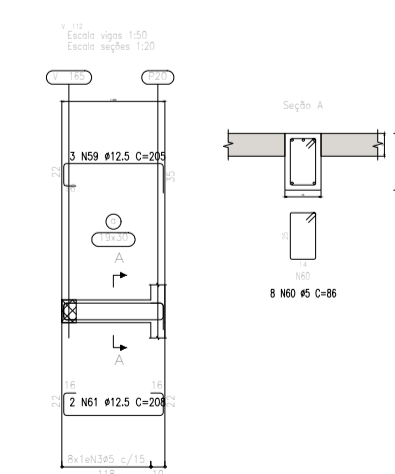
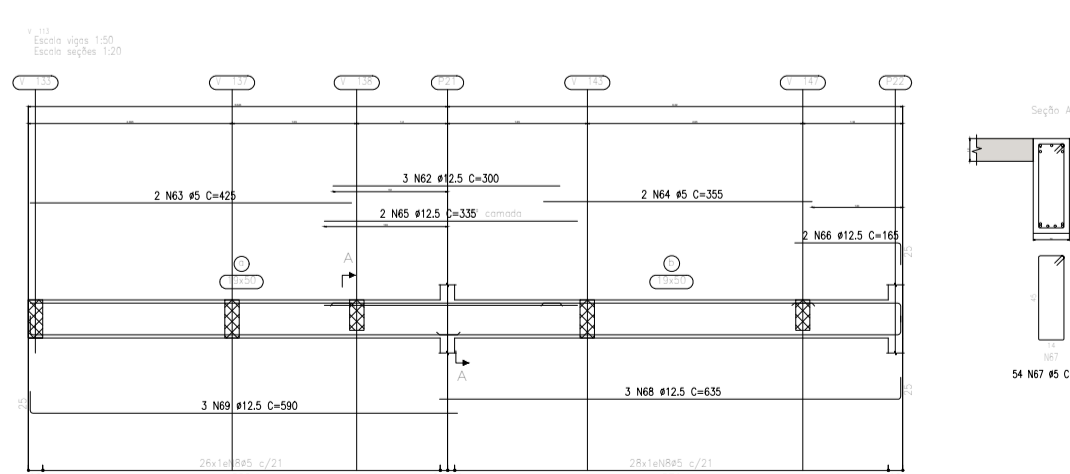
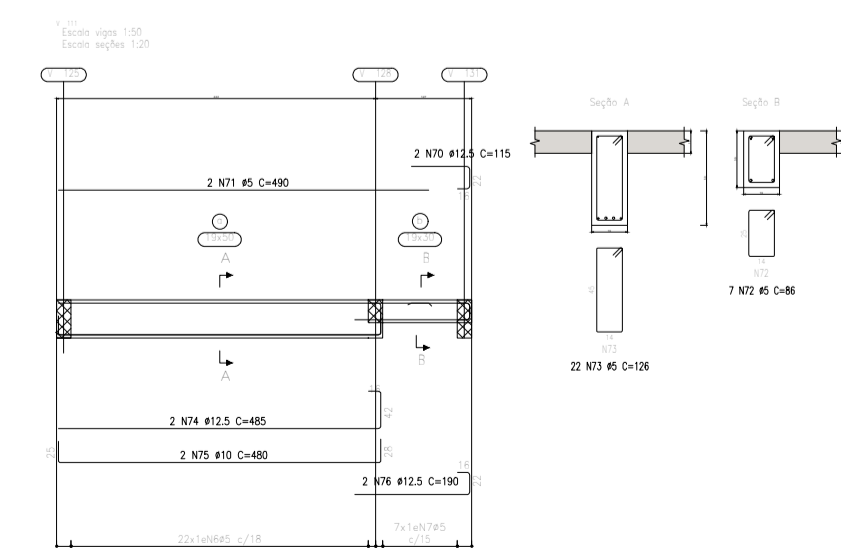
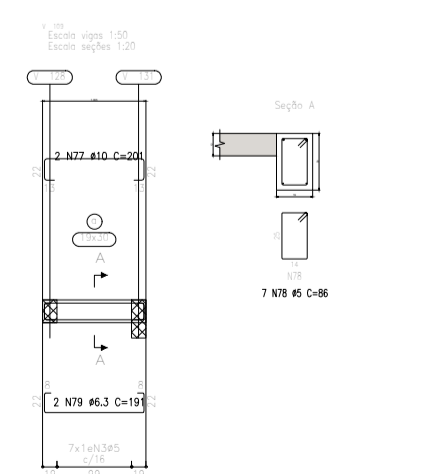
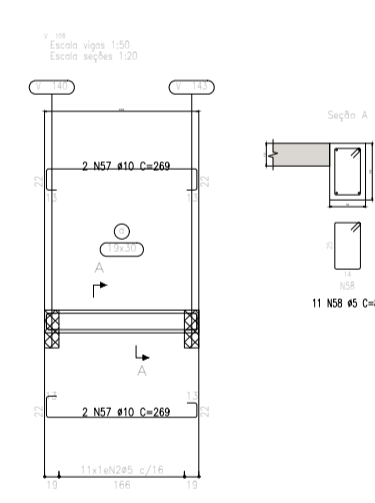
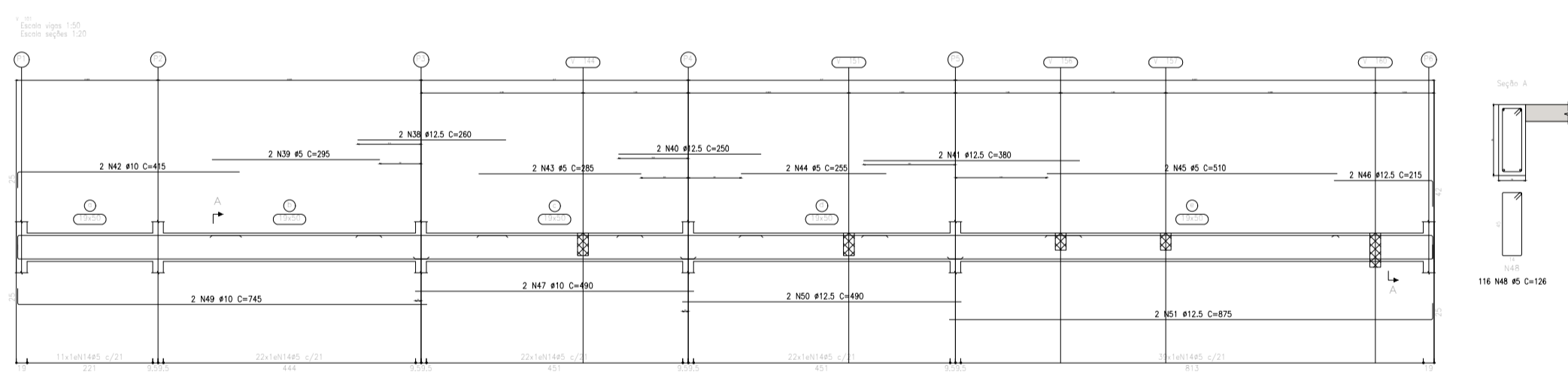
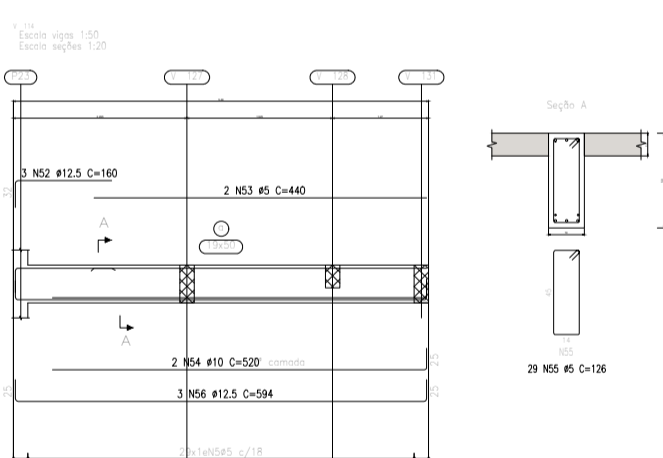
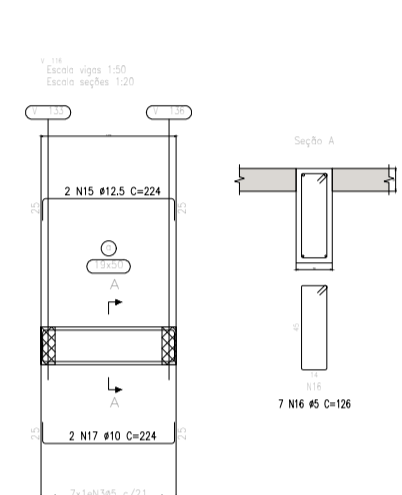
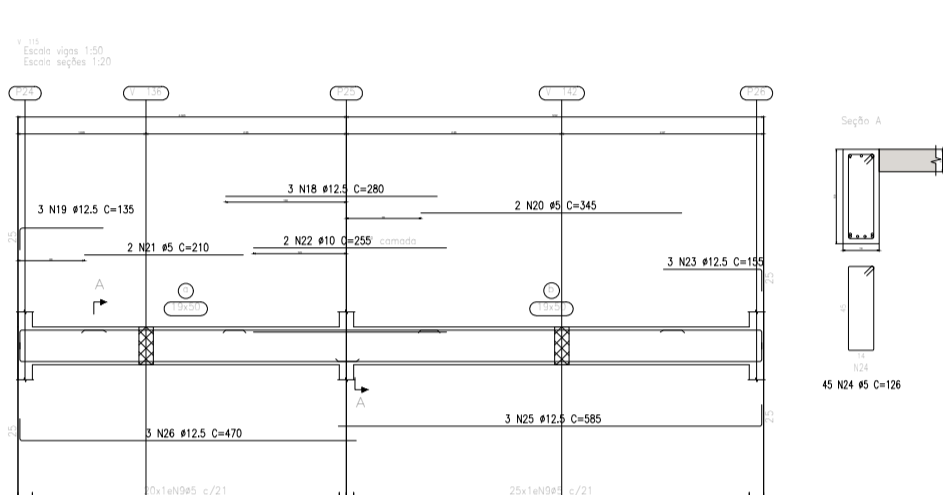
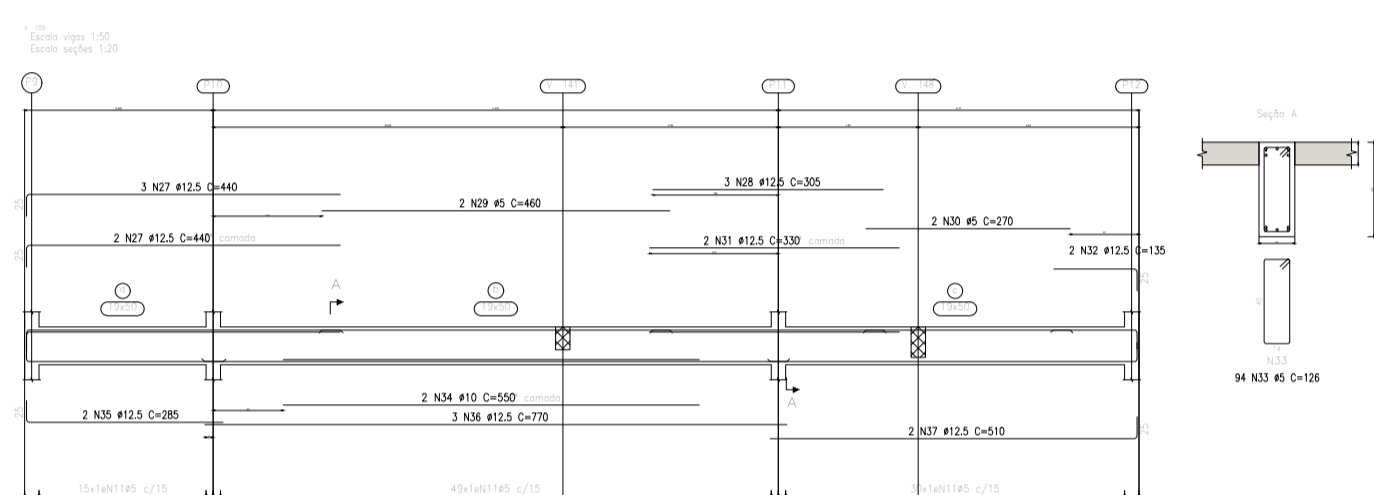



[illegible]

## NOTAS GERAIS

1- MATERIALS:

CONCRETO: C30 (30MPa)    RELAÇÃO A/C  $\leq 0,55$   
CONSUMO DE CIMENTO  $\geq 320\text{kg/m}^3$   
AÇO: CA-50A (500MPa)

2- CONVENÇÕES:

- |   |                       |
|---|-----------------------|
|  | PILARES QUE NASCEM    |
|  | PILARES QUE CONTINUAM |
|  | PILARES QUE MORREM    |

3- DIMENSÕES:

COTAS EM CENTÍMETROS E NÍVEIS EM METROS (EXCETO ONDE INDICADO)

NOTAS

ASSINATURA: RESPONSÁVEL LEGAL

ASSINATURAS: PROJETO - RESPONSÁVEL TÉCNICO

REVISÃO

PREV\_05

REV\_04

REV\_03

REV\_01

REV 00 - ADO2025 - EMISSÃO INICIAL

ASSINATURA: APROVAÇÃO:

SESAB - SECRETARIA DA SAÚDE DO ESTADO DA BAHIA  
CEIRF - COORDENAÇÃO EXECUTIVA DE INFRAESTRUTURA DA REDE FÍSICA DA SESAB  
CAS - COORDENAÇÃO DE ARQUITETURA EM SAÚDE

EAS: UCT - UNIDADE DE COLETA E TRANSFUSÃO

PROJETO

## PROJETO ESTRUTURAL

ENDEREÇO: RUA

ETAPA PROJETO:

PROJET

RESPONSÁVEL TÉCNICO: MILENA CRISTINA TEIXEIRA ROSAS

PLANTA:

# ARMAC

GOVERNO DO ESTADO  
**BAHIA** SECRETARIA  
DA SAÚDE

FOLHA

06/16