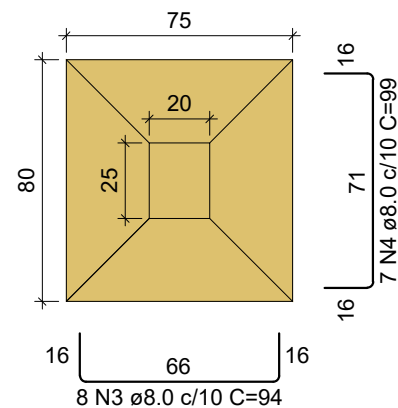
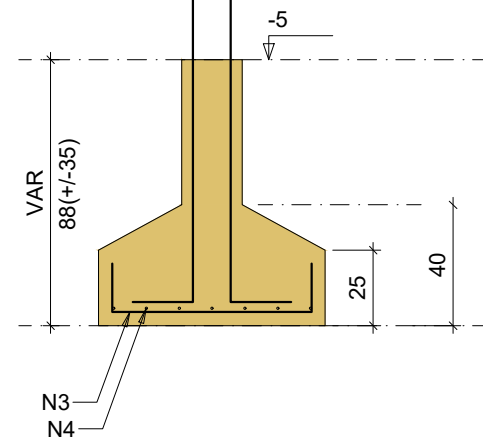


S1=S10

PLANTA
ESC 1:25

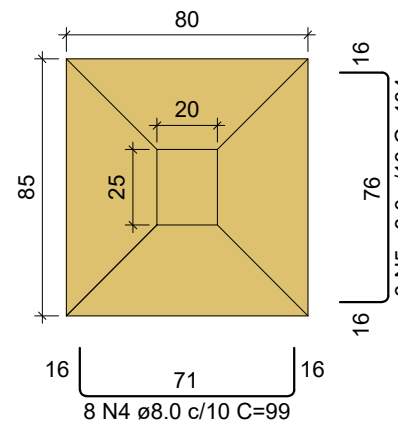


CORTE
ESC 1:25

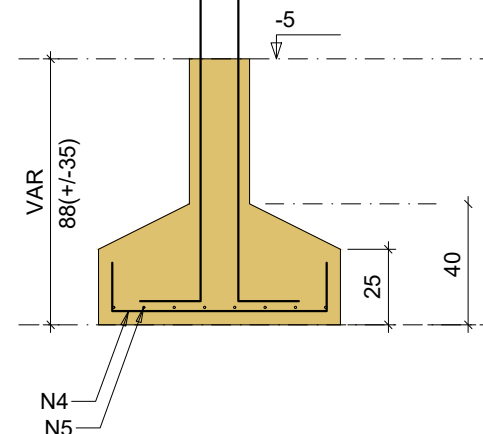


S2=S5=S6=S9

PLANTA
ESC 1:25

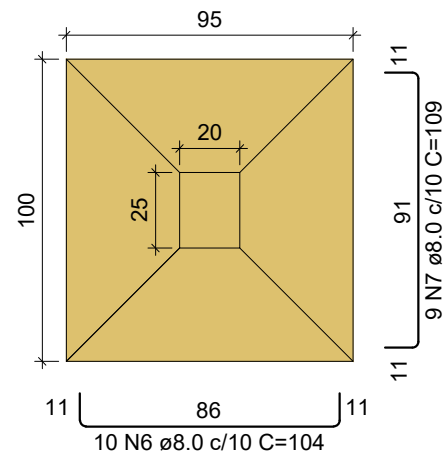


CORTE
ESC 1:25

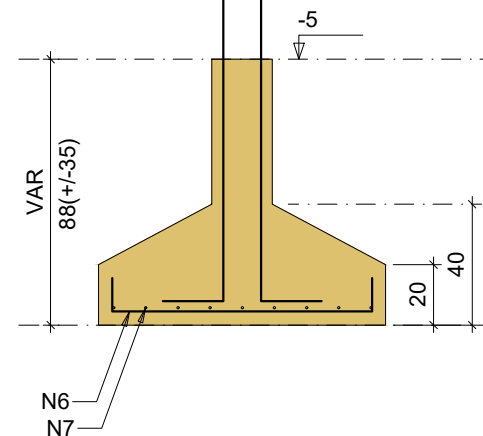


S3=S4=S7=S8

PLANTA
ESC 1:25



CORTE
ESC 1:25

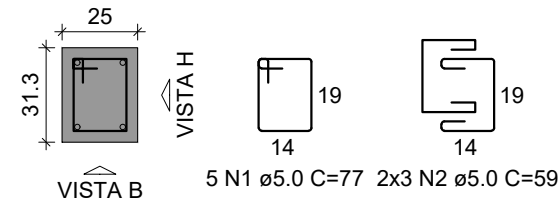


Solo com capacidade de suporte > 1.50 kgf/cm²
Solo compactado sobre a sapata
peso específico > 1600.00 kgf/m³

P1=P10

TÉRREO - L1

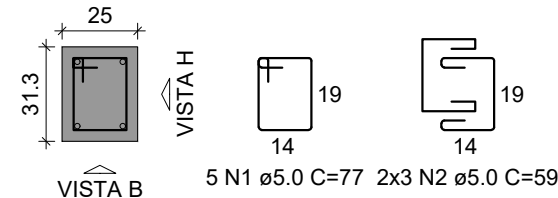
SEÇÃO
ESC 1:20



P2=P5=P6=P9

TÉRREO - L1

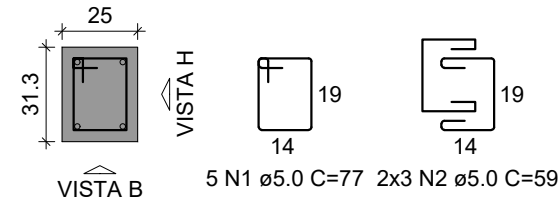
SEÇÃO
ESC 1:20



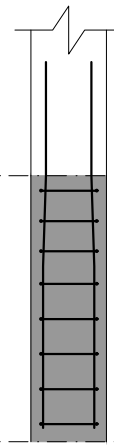
P3=P4=P7=P8

TÉRREO - L1

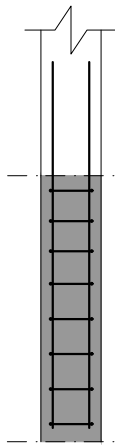
SEÇÃO
ESC 1:20



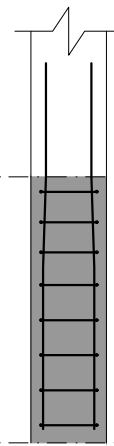
VISTA H
ESC 1:25



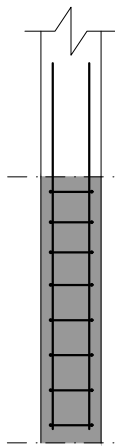
VISTA B
ESC 1:25



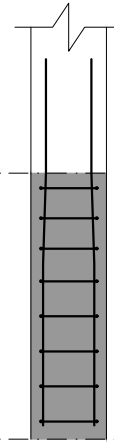
VISTA H
ESC 1:25



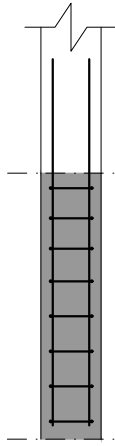
VISTA B
ESC 1:25



VISTA H
ESC 1:25



VISTA B
ESC 1:25



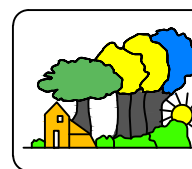
RELAÇÃO DO AÇO

2xP1 2xS1		4xP2 4xS2		4xP3 4xS3	
AÇO	N	DIAM (mm)	QUANT	C.UNIT (cm)	C.TOTAL (cm)
CA60	1	5.0	50	77	3850
	2	5.0	60	59	3540
	3	8.0	16	94	1504
	4	8.0	46	99	4554
	5	8.0	32	104	3328
	6	8.0	40	104	4160
	7	8.0	36	109	3924
	8	10.0	40	140	5600

RESUMO DO AÇO

AÇO	DIAM (mm)	C.TOTAL (m)	PESO + 10% (kg)
CA50	8.0	174.7	75.8
CA60	10.0	56	38
PESO TOTAL (kg)			
CA50	113.8		
CA60	12.5		

Volume de concreto (C-25) = 2.57 m³
Área de forma = 12.29 m²



HIDRAELE Projetos e Serviços LTDA.
Engenharia Sanitária e Ambiental - Projetos e Serviços
Rua das Avenças nº01 Renascença 01 - São Luís MA-CEP 65077-620
Home Page: www.hidraele.com.br - Email: hidraele@hidraele.com.br
Fone: (98) 3235 5557

PROJETISTA: _____ DISCIPLINA: **ESTRUTURAL**
DATA: **05 / 2025** AUTOR DO PROJETO: _____
REVISÃO: **01** ARQ. MAURO ROGÉRIO MARANHÃO PINTO
CAU Nº A45767-1

CLIENTE: **PREFEITURA MUNICIPAL DE ZÉ DOCA/MA**
EMPREENDIMENTO: **PROJETO PARA CONSTRUÇÃO DE QUIOSQUE**
TÍTULO: **PLANTA DE FUNDAÇÃO**
ENDEREÇO: **BALNEÁRIO PRAINHA**
FOLHA Nº: **01/01**