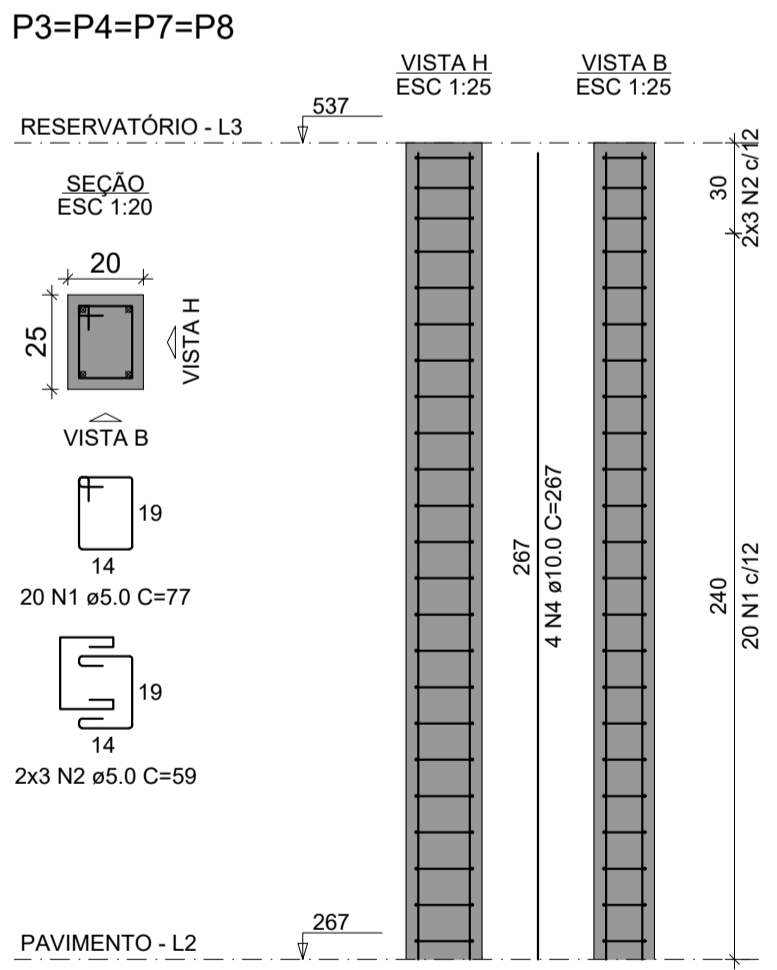
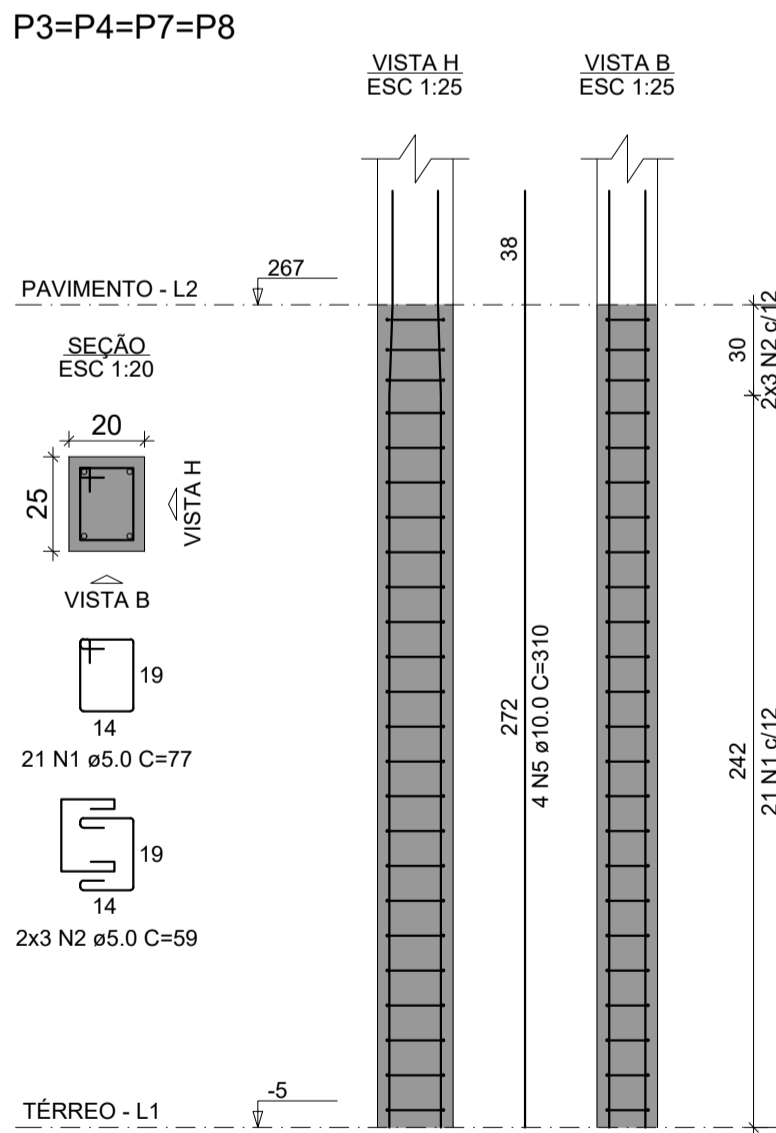
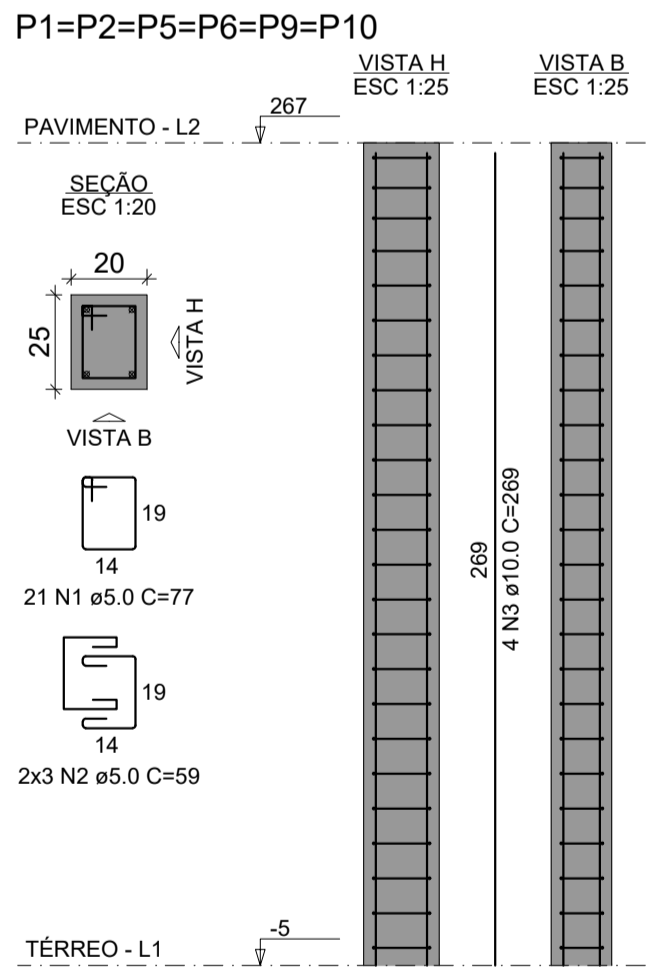


RELAÇÃO DO AÇO					
AÇO	N	DIAM (mm)	QUANT	C.UNIT (cm)	C.TOTAL (cm)
CA60	1	5.0	442	87	38454
CA50	2	8.0	18	215	3870
	3	8.0	8	249	1992
	4	8.0	8	324	2592
	5	8.0	4	374	1496
	6	8.0	4	340	1360
	7	8.0	8	279	2232
	8	8.0	4	329	1316
	9	8.0	8	242	1936
	10	8.0	12	281	3372
	11	8.0	4	264	1056
	12	8.0	8	367	2936
	13	8.0	4	417	1668
	14	8.0	4	423	1692
	15	8.0	6	287	1722
	16	8.0	12	285	3540
	17	8.0	8	234	1872

RESUMO DO AÇO			
AÇO	DIAM (mm)	C.TOTAL (m)	PESO + 10% (kg)
CA50	8.0	346.5	150.4
CA60	5.0	384.5	65.2
PESO TOTAL (kg)			
CA50		150.4	
CA60		65.2	

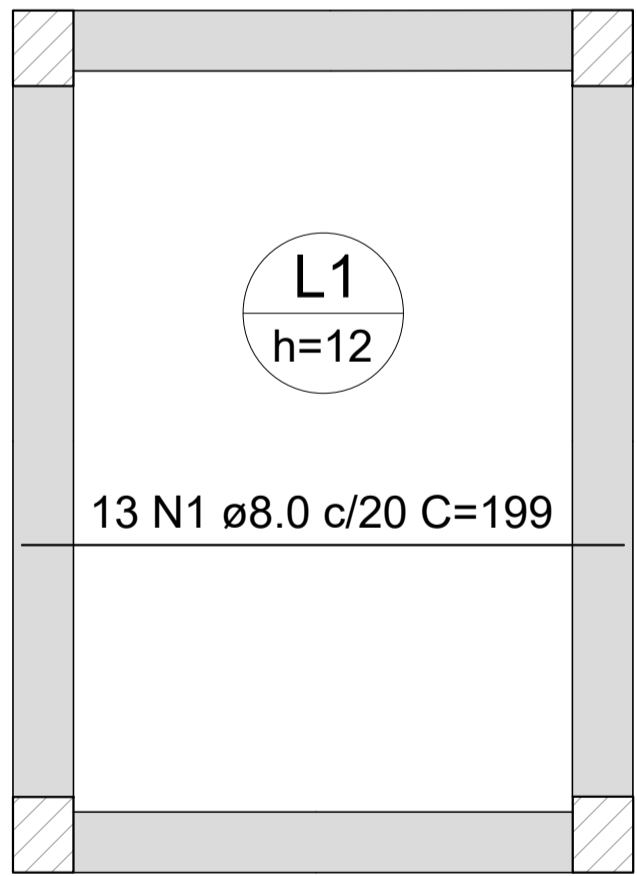
Volume de concreto (C-25) = 3.91 m³
Área de forma = 51.12 m²



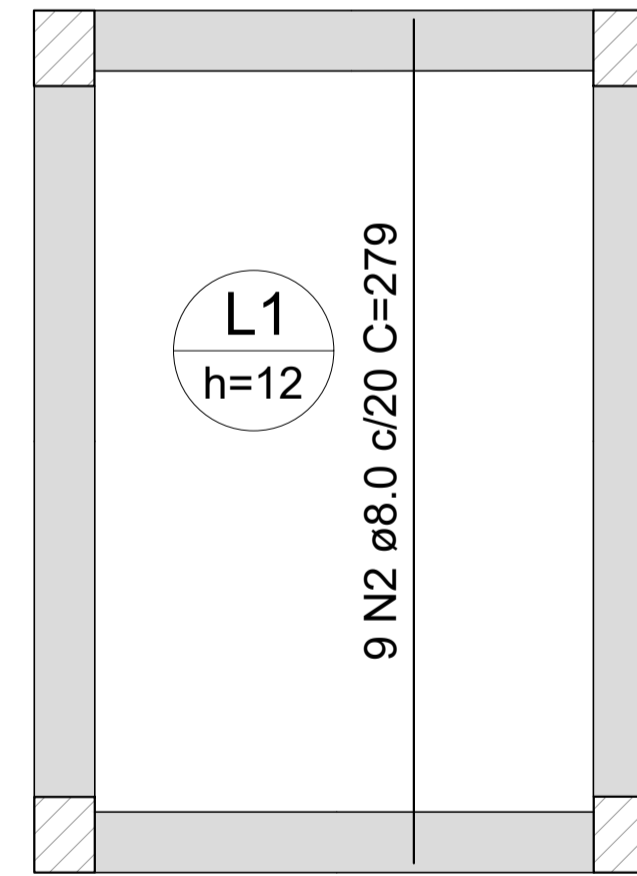
RELAÇÃO DO AÇO					
AÇO	N	DIAM (mm)	QUANT	C.UNIT (cm)	C.TOTAL (cm)
CA60	1	5.0	290	77	22330
CA50	2	5.0	84	59	4956
	3	10.0	24	269	6456
	4	10.0	16	267	4272
	5	10.0	16	310	4960

RESUMO DO AÇO			
AÇO	DIAM (mm)	C.TOTAL (m)	PESO + 10% (kg)
CA50	10.0	156.9	106.4
CA60	5.0	272.9	46.3
PESO TOTAL (kg)			
CA50		106.4	
CA60		46.3	

Volume de concreto (C-25) = 1.90 m³
Área de forma = 34.20 m²



Armação Positiva
Escala 1/25



Armação Negativa
Escala 1/25

RELAÇÃO DO AÇO					
Positivos X			Positivos Y		
AÇO	N	DIAM (mm)	QUANT	C.UNIT (cm)	C.TOTAL (cm)
CA50	1	8.0	13	199	2587
	2	8.0	9	279	2511

RESUMO DO AÇO			
AÇO	DIAM (mm)	C.TOTAL (m)	PESO + 10% (kg)
CA50	8.0	51	22.1
PESO TOTAL (kg)			
CA50		22.1	

Volume de concreto (C-25) = 0.49 m³
Área de forma = 4.05 m²