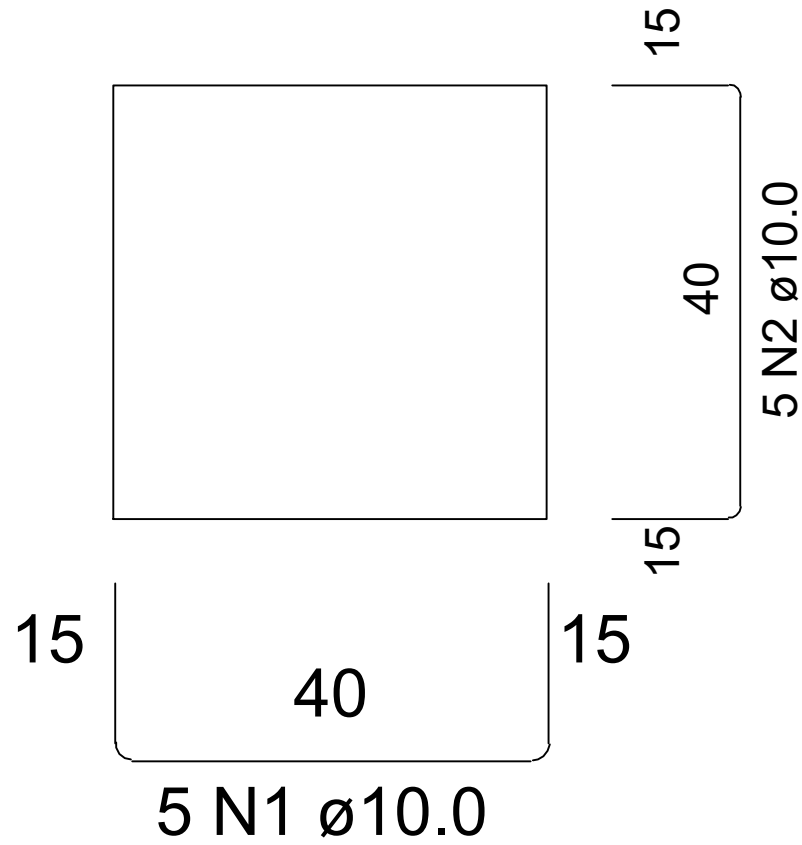
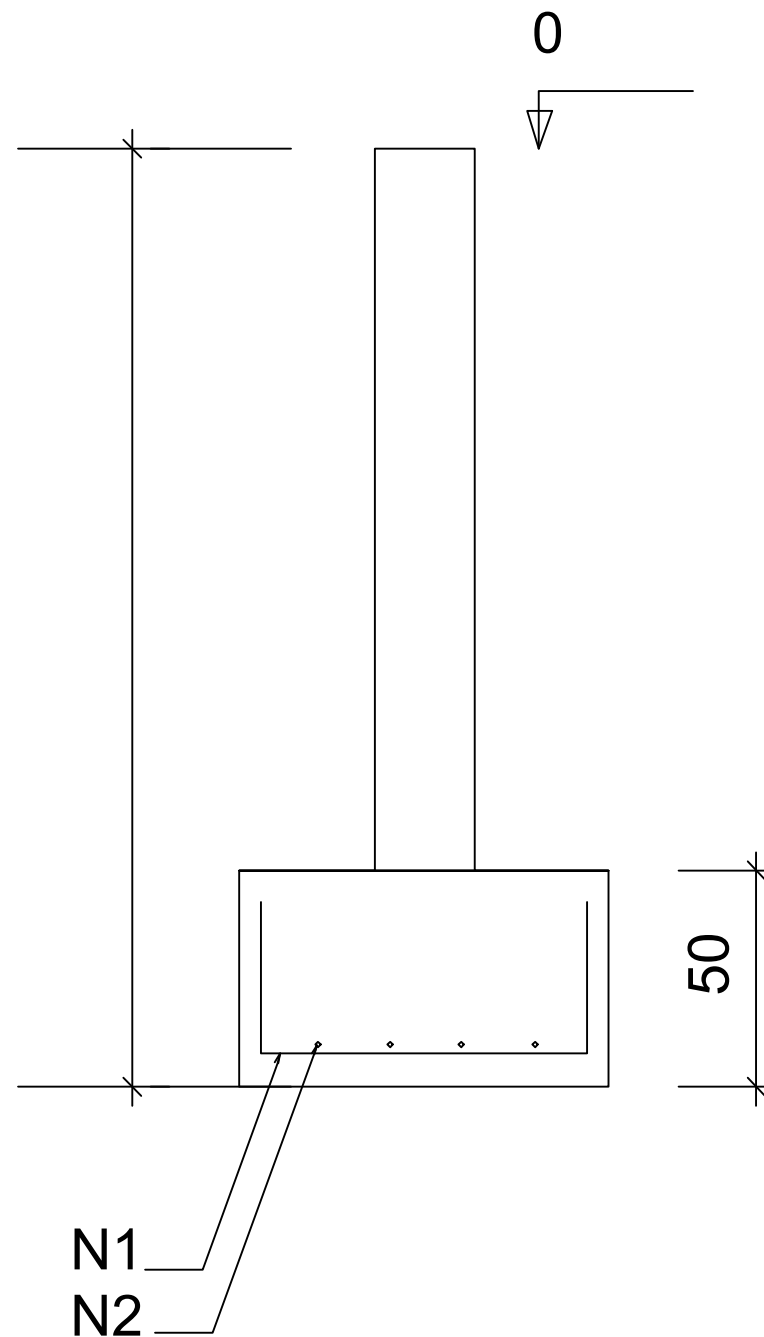


PLANTA
ESC 1:25

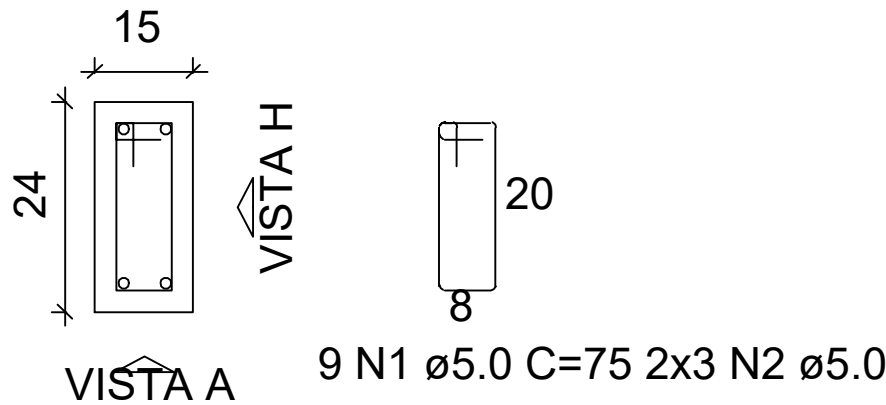


CORTE
ESC 1:25



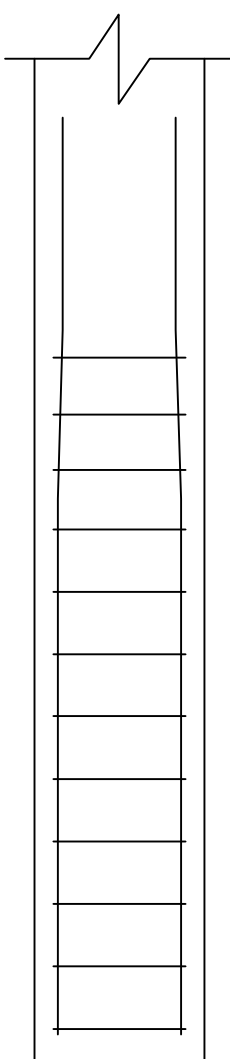
PILAR

SEÇÃO
ESC 1:20

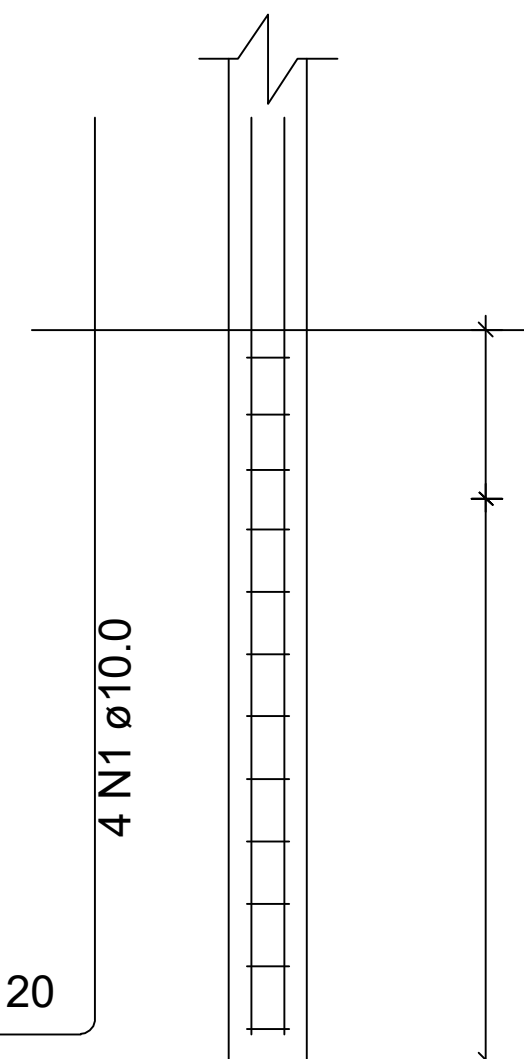


VIGAS

VISTA B
ESC 1:25



VISTA C
ESC 1:25



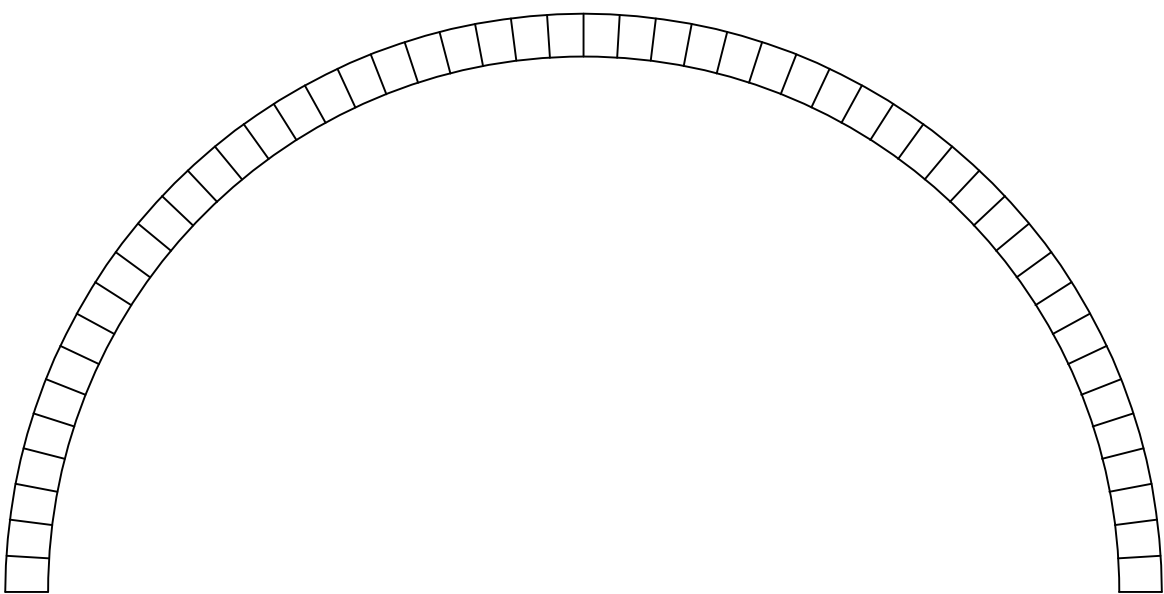
EMBASAMENTO

DETALHAMENTO FUNDAÇÃO

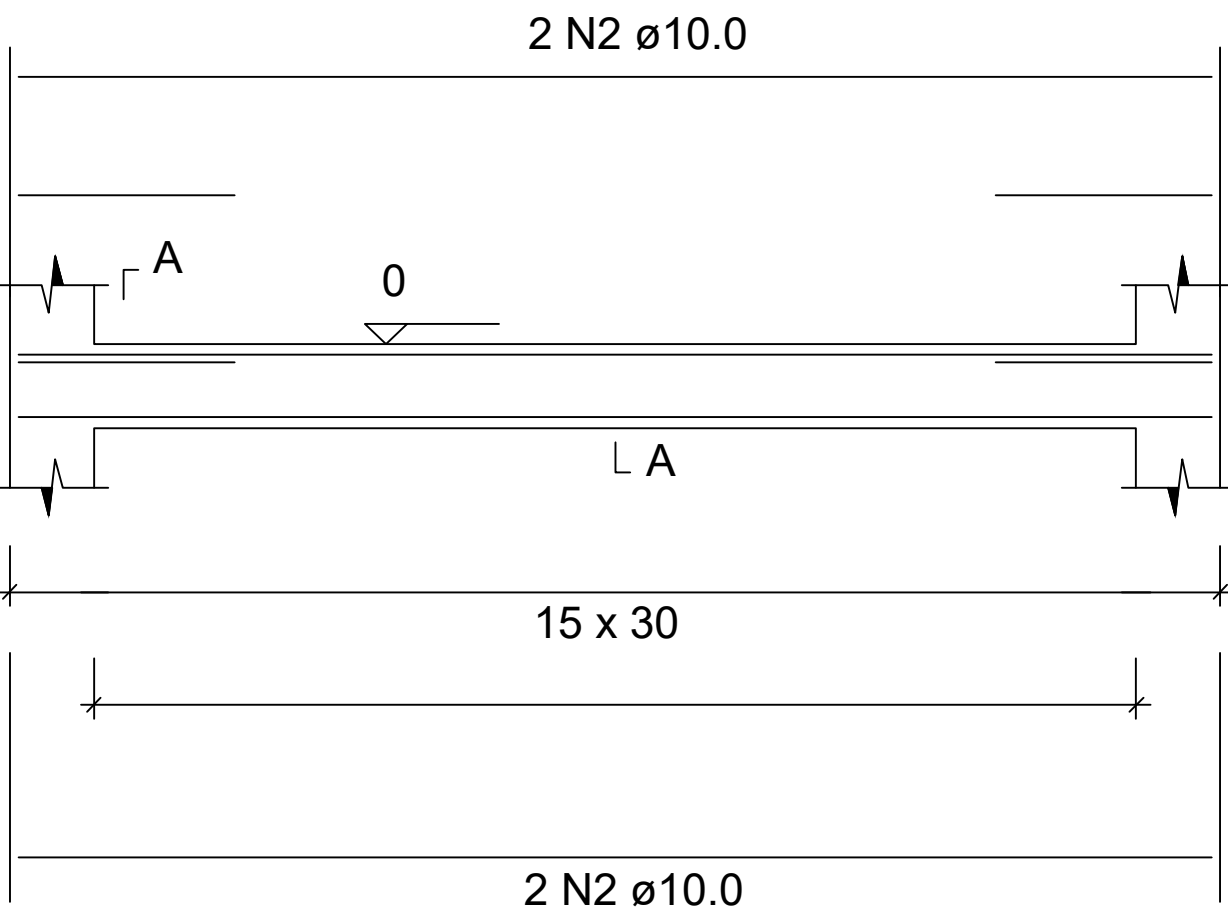
PILAR

SAPATAS

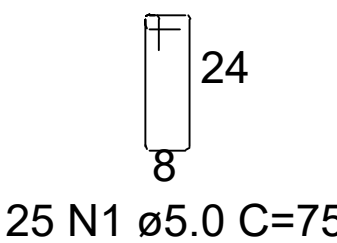
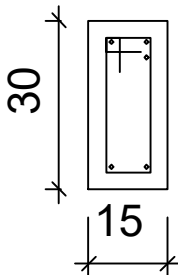
DESENHO DOS ARCOS



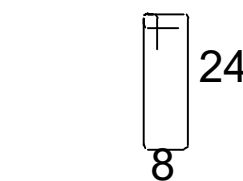
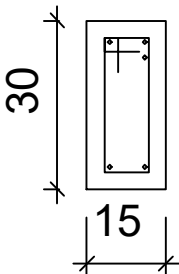
ARCOS



SEÇÃO A-A
ESC 1:25



SEÇÃO A-A
ESC 1:25



25 N1 ø5.0 C=75

RESP. TÉCNICO

CARLOS NEI LUCENA DE O. JUNIOR
ENGENHEIRO CIVIL CREA: 2117139493RN

RUA LUIZA N PIMENTA, 145, CAMPO GRANDE - RN
Fone: (84) 99613-3299, E-mail: jrlucena.eng@gmail.com

OBRA : CEMITERIO PUBLICO

PROPRIETÁRIO : PREFEITURA MUNICIPAL DE CAMPO GRANDE

LOCAL : CAMPO GRANDE - RN

ASSUNTO : PROJETO ESTRUTURAL

PRANCHA

1/1

DESENHO: JUNIOR LUCENA

ESCALA : 1:100

DATA : MARÇO / 2026