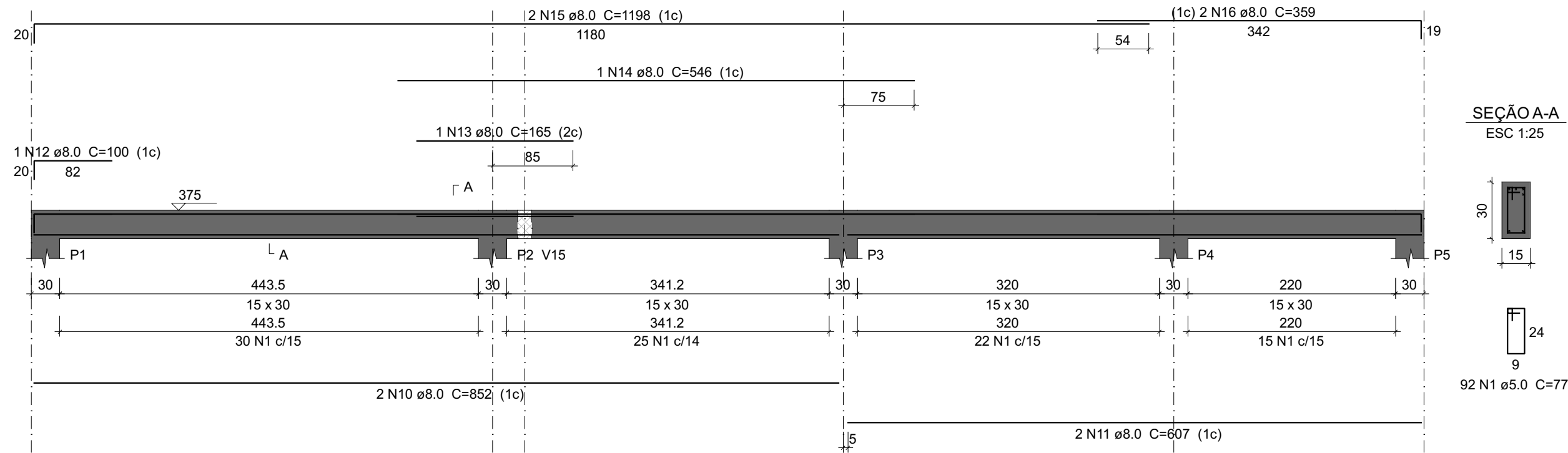


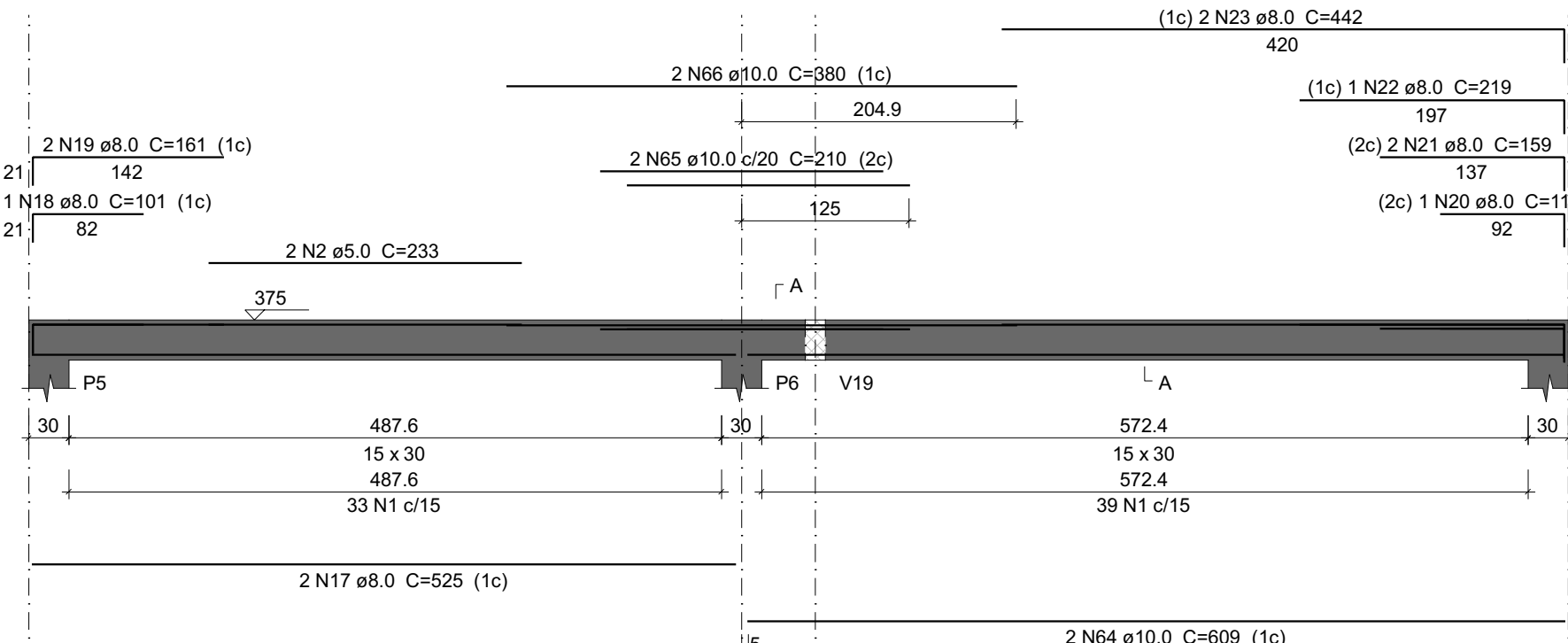
V1

ESC 1:50



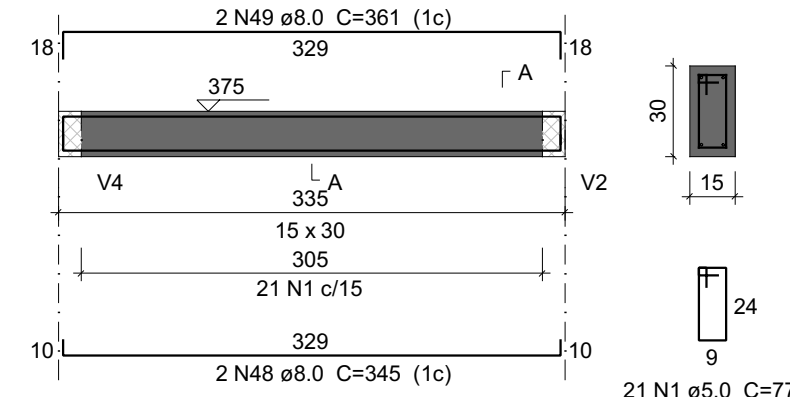
V2

ESC 1:50



V19

ESC 1:50



Relação do aço

ACO	N	DIAM (mm)	QUANT	C.UNIT (cm)	C.TOTAL (cm)
CA60	1	5.0	961	77	73997
	2	5.0	2	233	466
	3	5.0	2	235	470
	4	5.0	2	252	504
	5	5.0	2	226	452
	6	5.0	2	370	740
	7	5.0	2	240	480
	8	5.0	2	248	496
	9	5.0	4	149	596
	10	8.0	4	652	3408
	11	8.0	8	607	1214
	12	8.0	1	100	100
	13	8.0	1	165	165
	14	8.0	2	535	1070
	15	8.0	2	1198	2396
	16	8.0	2	359	718
	17	8.0	1	525	1050
	18	8.0	1	101	101
	19	8.0	2	161	322
	20	8.0	1	114	114
	21	8.0	2	159	318
	22	8.0	1	219	219
	23	8.0	2	442	884
	24	8.0	6	307	1842
	25	8.0	1	128	128
	26	8.0	2	336	672
	27	8.0	1	250	250
	28	8.0	2	815	1630
	29	8.0	2	902	1804
	30	8.0	8	299	2392
	31	8.0	2	954	1908
	32	8.0	2	602	1204
	33	8.0	2	179	358
	34	8.0	1	290	290
	35	8.0	2	524	1048
	36	8.0	2	130	260
	37	8.0	2	81	162
	38	8.0	4	332	1328
	39	8.0	8	331	2648
	40	8.0	2	315	630
	41	8.0	2	542	1084
	42	8.0	2	570	1140
	43	8.0	1	85	85
	44	8.0	2	550	1100
	45	8.0	1	130	130
	46	8.0	1	212	212
	47	8.0	2	572	1144
	48	8.0	6	345	2070
	49	8.0	6	361	2166
	50	8.0	2	472	944
	51	8.0	2	156	312
	52	8.0	2	121	242
	53	8.0	2	714	1428
	54	8.0	2	101	202
	55	8.0	1	100	100
	56	8.0	2	418	836
	57	8.0	2	1185	2370
	58	8.0	4	1065	4260
	59	8.0	4	172	688
	60	8.0	2	722	1444
	61	8.0	1	125	125
	62	8.0	2	752	1504
	63	8.0	2	1177	2354
	64	10.0	2	609	1218
	65	10.0	2	210	420
	66	10.0	2	380	760
	67	10.0	2	534	1068
	68	12.5	2	180	360
	69	12.5	2	1200	2400
	70	12.5	2	354	708

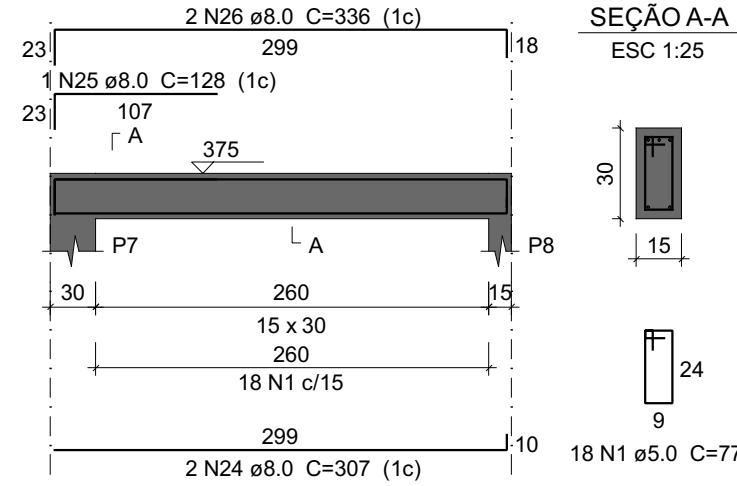
Resumo do aço

ACO	DIAM (mm)	C.TOTAL (m)	PESO (kg)
CA50	8.0	667.3	223.8
	10.0	34.7	21.4
	12.5	34.7	33.4
CA60	5.0	782.1	120.5
PESO TOTAL (kg)			
CA50		278.6	
CA60		120.5	

Volume de concreto (C=30) = 6.29 m³
Área de forma = 79.29 m²Documento assinado digitalmente
WAGNER DARY DA SILVA
Data: 26/02/2025 11:59:05 -0300
Verifique em: https://validar.dig.br

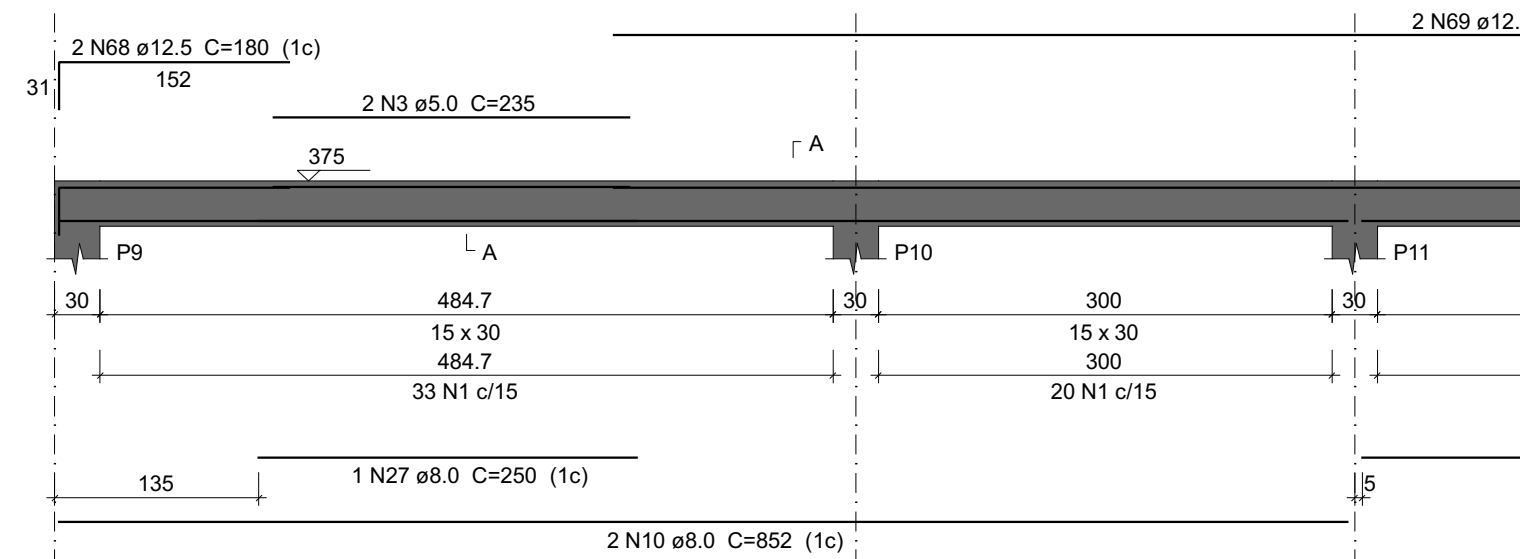
V3

ESC 1:50



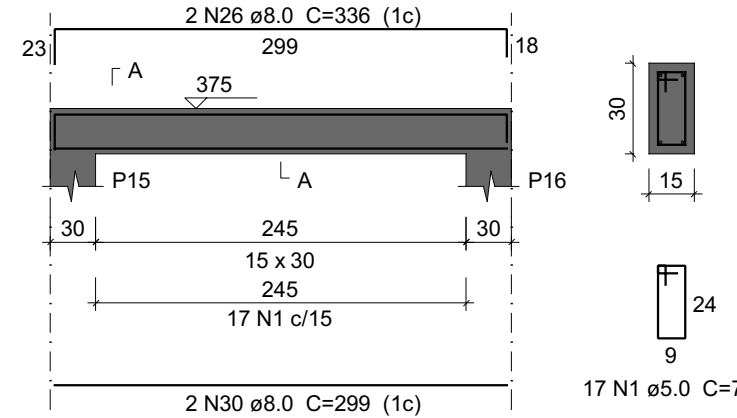
V4

ESC 1:50



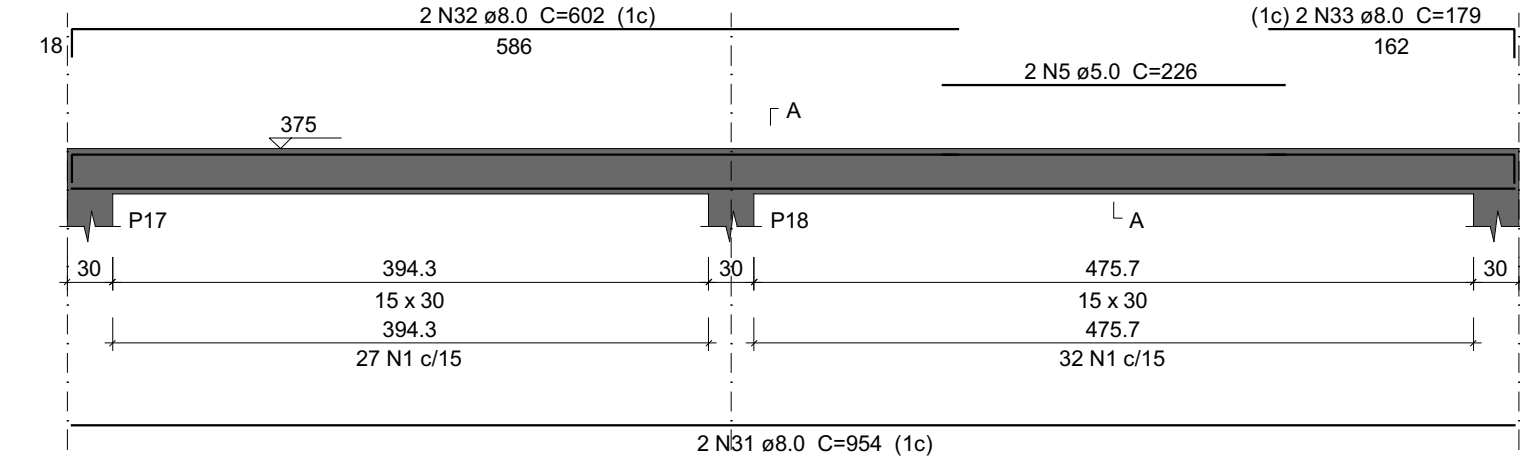
V5

ESC 1:50



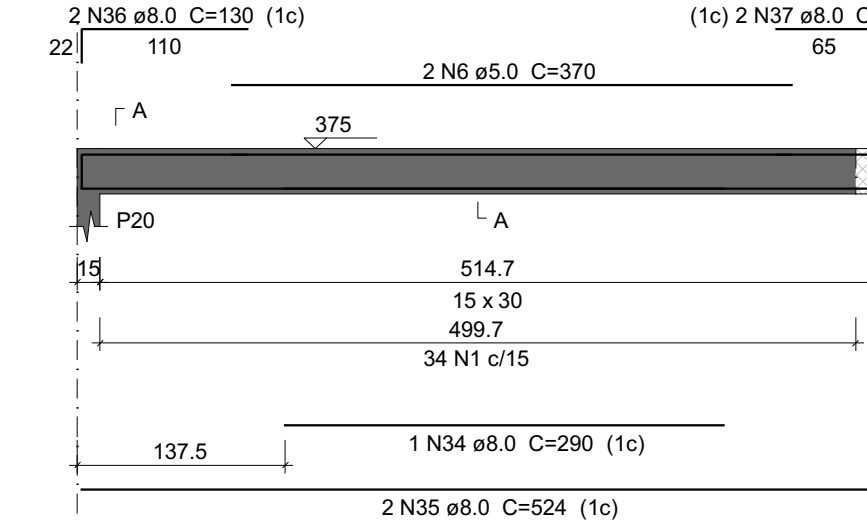
V6

ESC 1:50



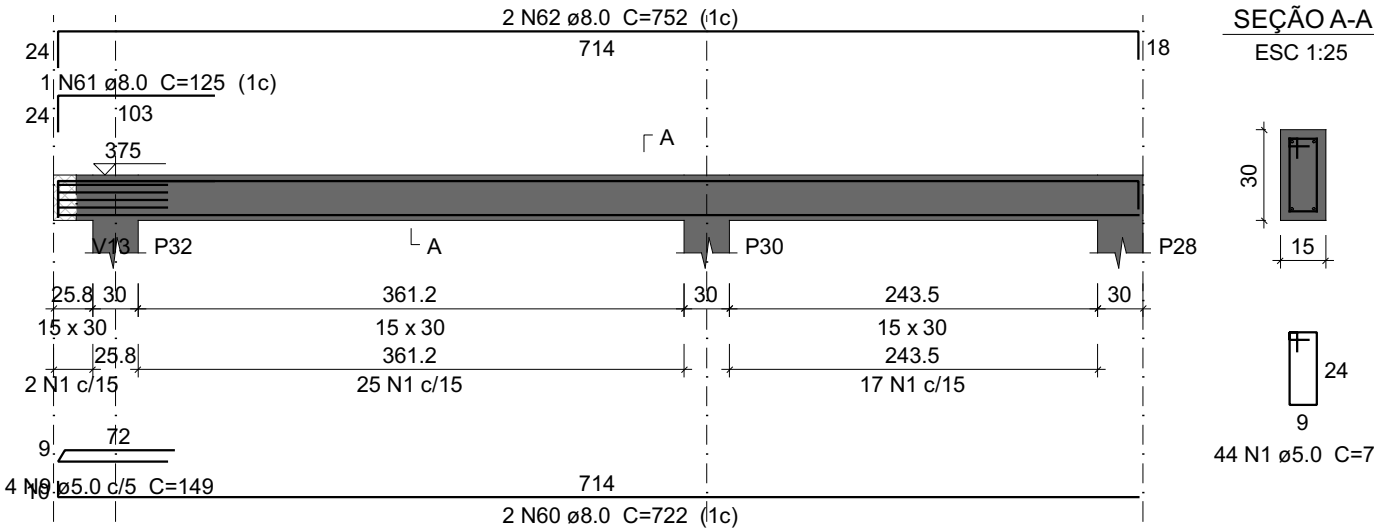
V7

ESC 1:50



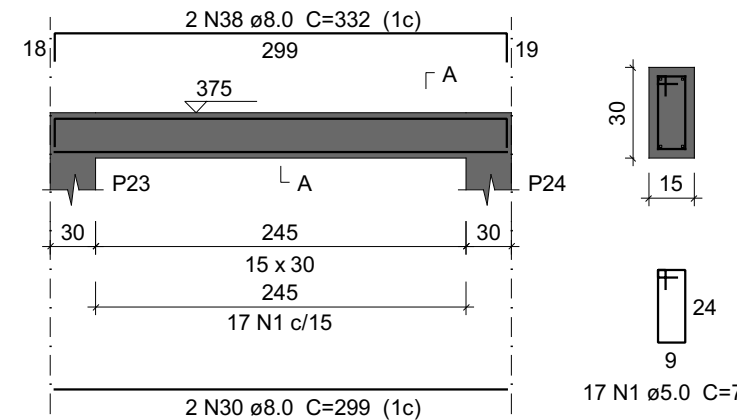
V22

ESC 1:50



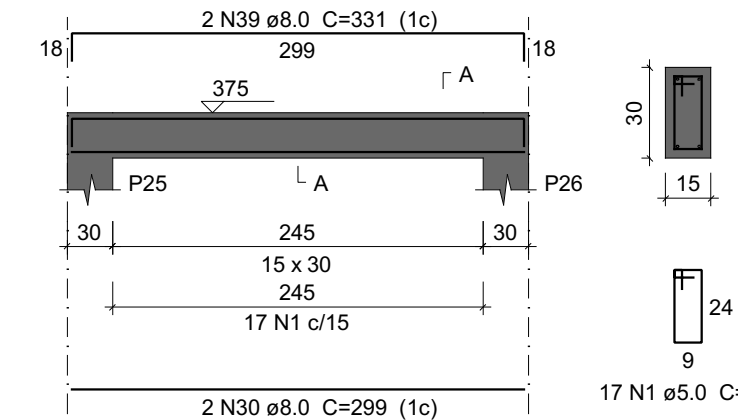
V9

ESC 1:50



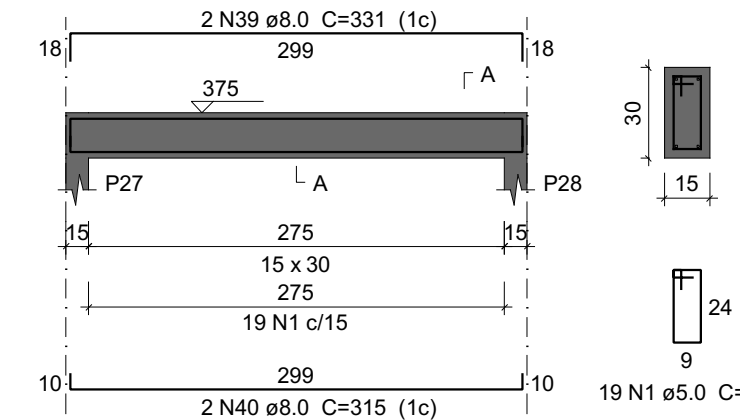
V10

ESC 1:50



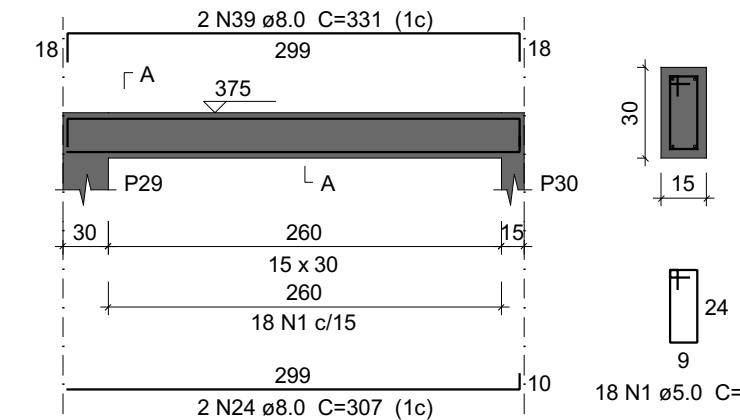
V11

ESC 1:50



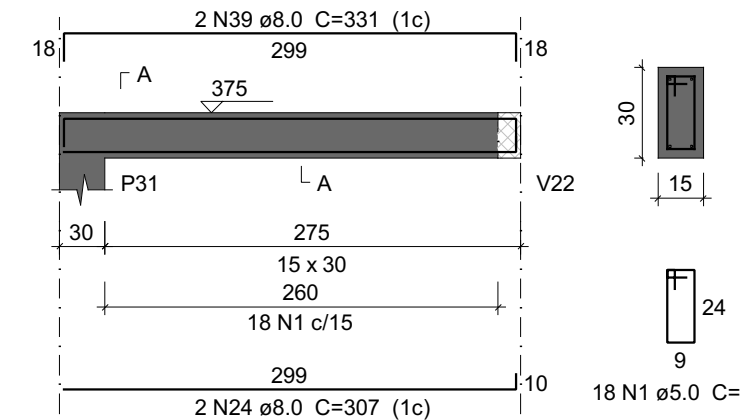
V12

ESC 1:50



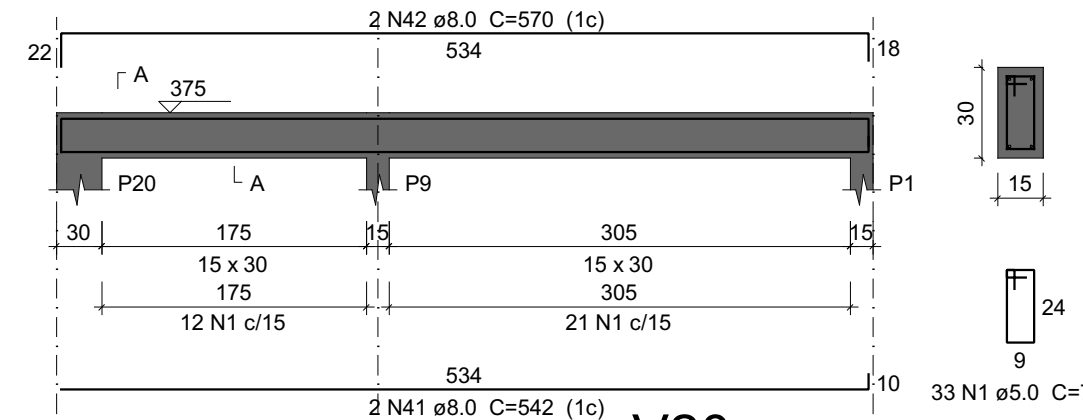
V13

ESC 1:50



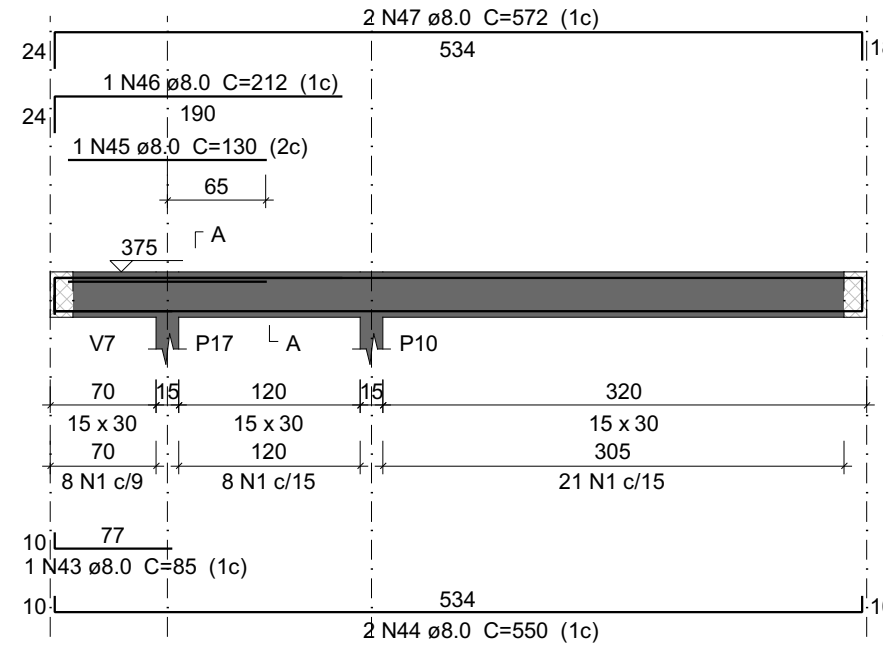
V14

ESC 1:50



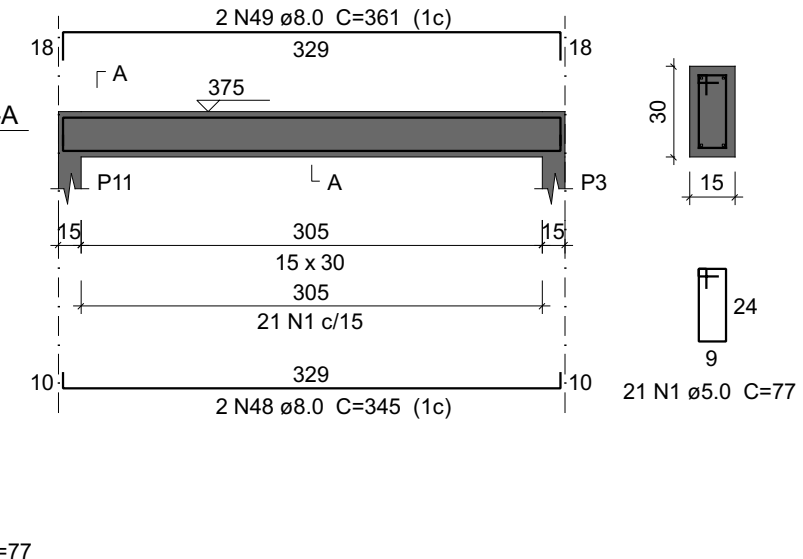
V15

ESC 1:50



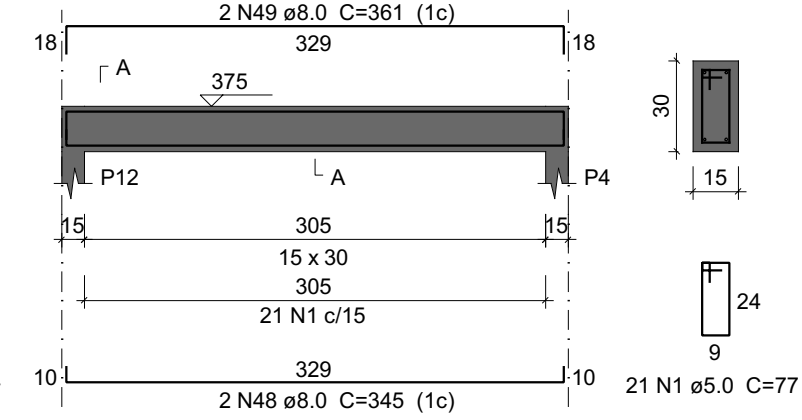
V16

ESC 1:50



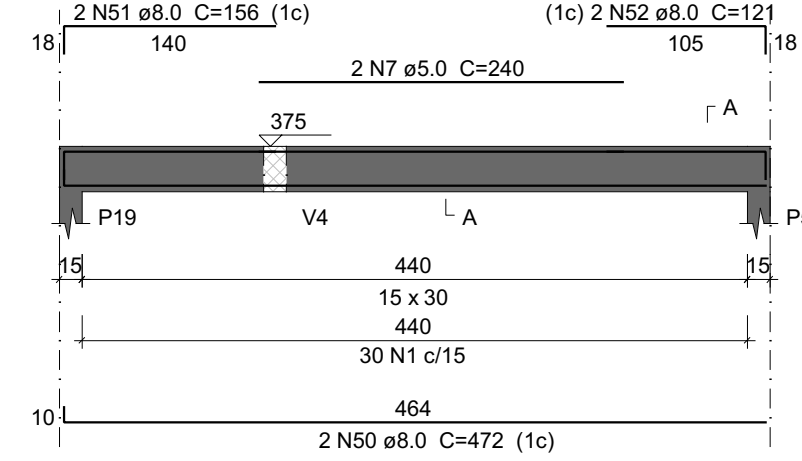
V17

ESC 1:50



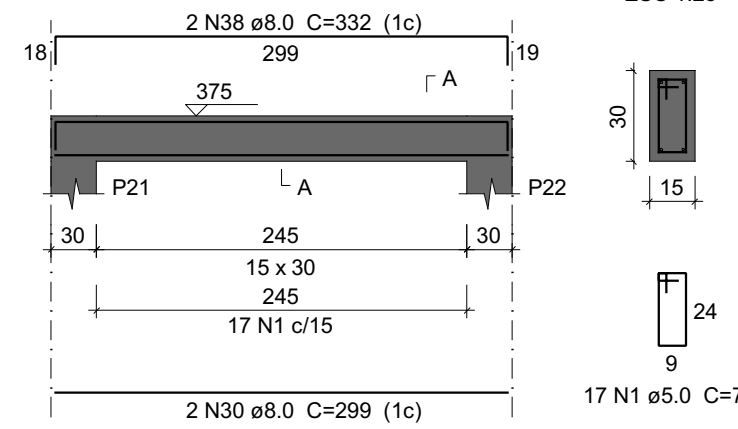
V18

ESC 1:50



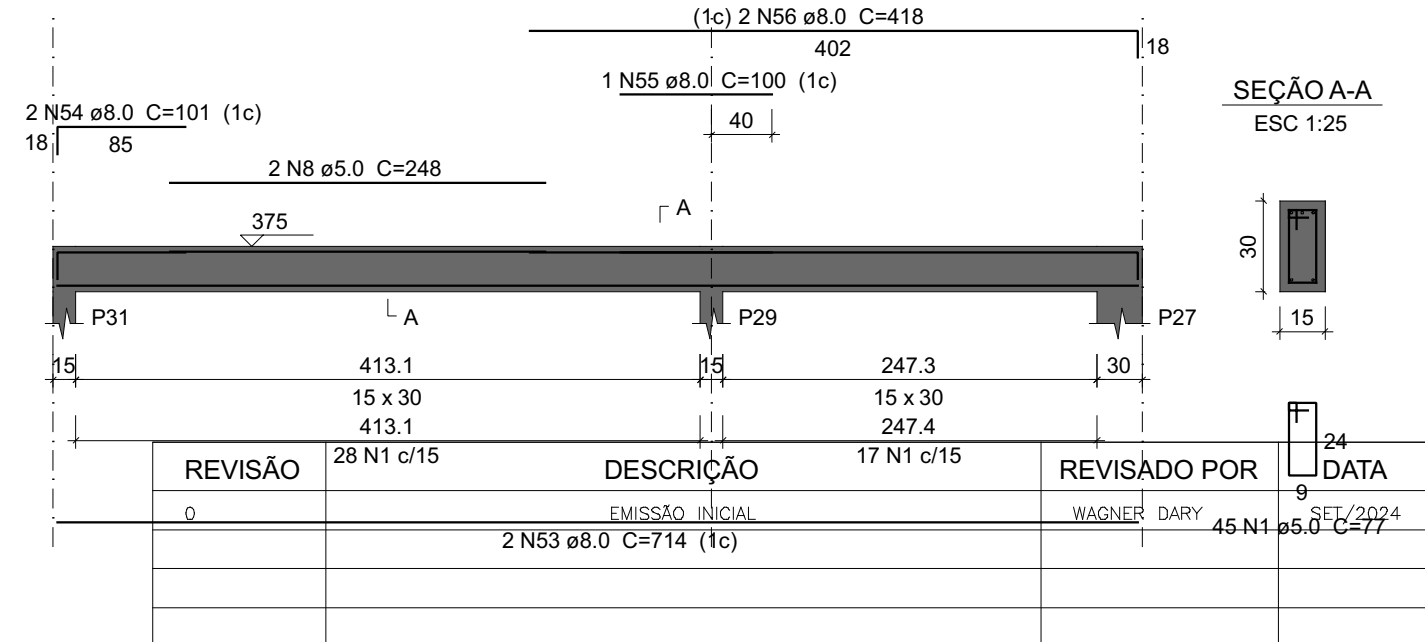
V8

ESC 1:50



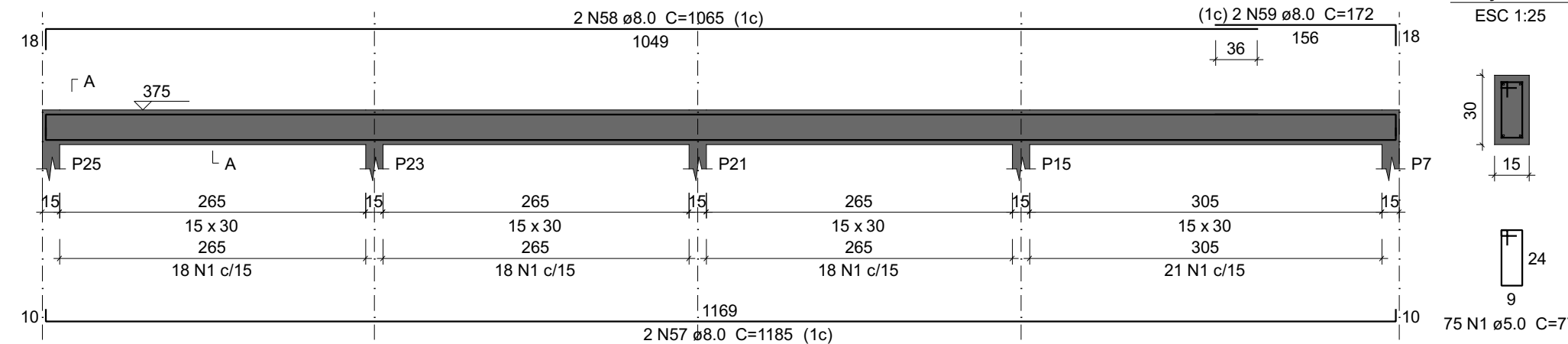
V20

ESC 1:50



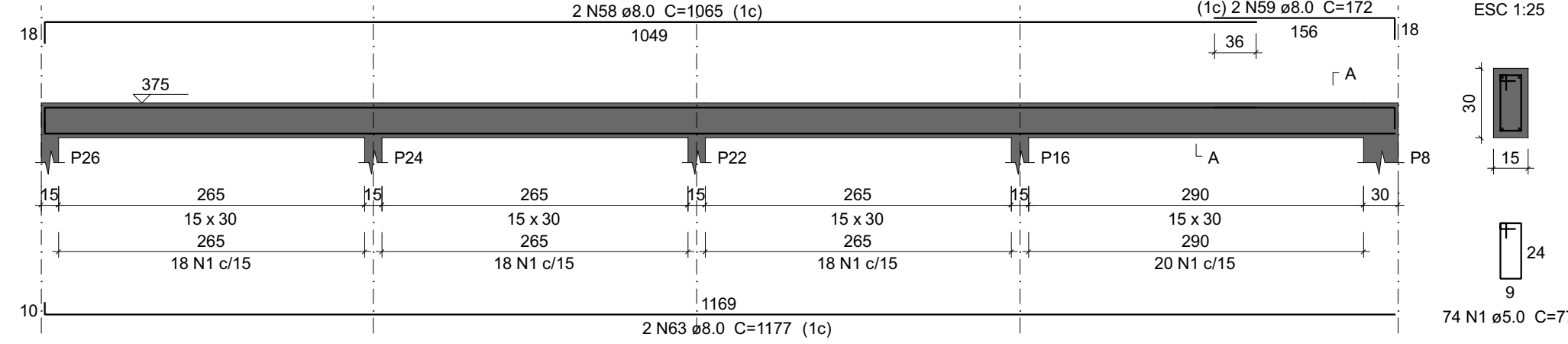
V21

ESC 1:50



V23

ESC 1:50



Protocolo de Assinatura(s)

O documento acima foi proposto para assinatura digital. Para verificar as assinaturas acesse o endereço <http://edocsergipe.se.gov.br/consultacodigo> e utilize o código abaixo para verificar se este documento é válido.

Código de verificação: EPSS-MMET-K5NX-V497



O(s) nome(s) indicado(s) para assinatura, bem como seu(s) status em 02/12/2025 é(são) :

Legenda: ■ Aprovada ■ Indeterminada ■ Pendente

■ WAGNER DARY DA SILVA 26/02/2025 11:59:01 (Certificado Digital)