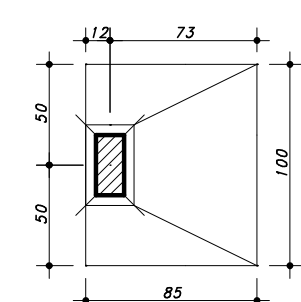


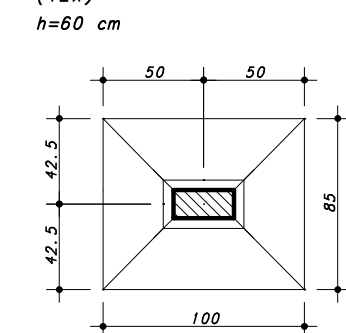
PLANTA: LOCAÇÃO
Escala - 1:75

DETALHE DAS SAPATAS
S/ Escola

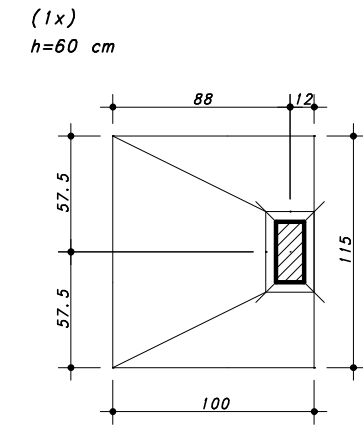
Sapata p/ - P90/P92/P1
P3/P4
P8/P93/P11/P12/P14
P17/P20/P23/P25
(14x)
h=60 cm



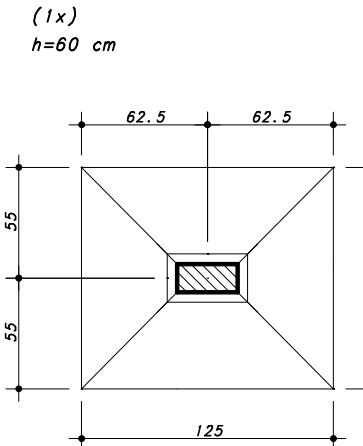
Sapata p/ - P91/P2/P5
P9/P10/P13/P16
P18/P19/P21/P22/P24
(12x)



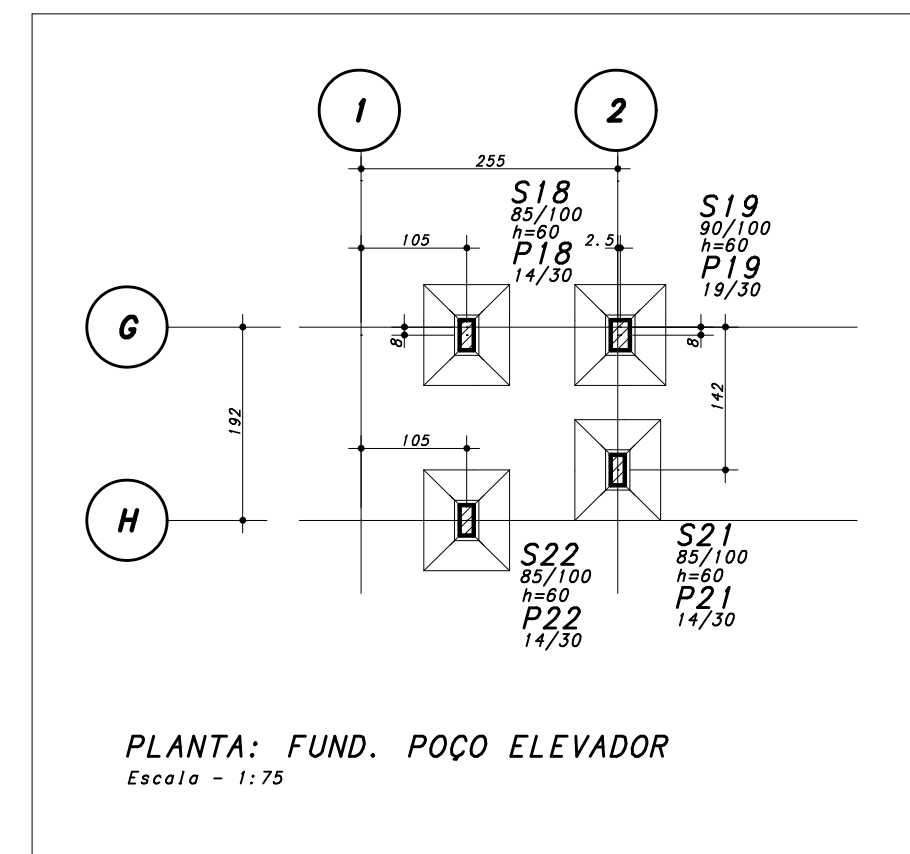
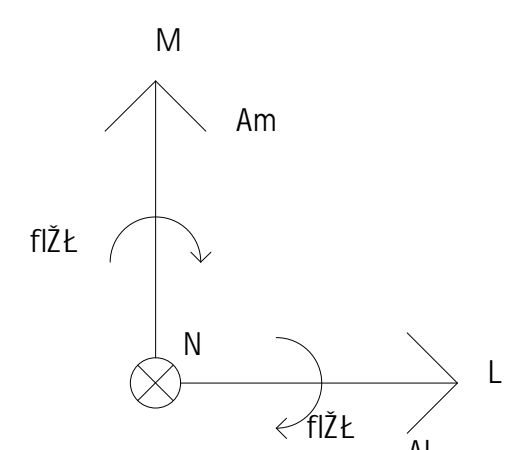
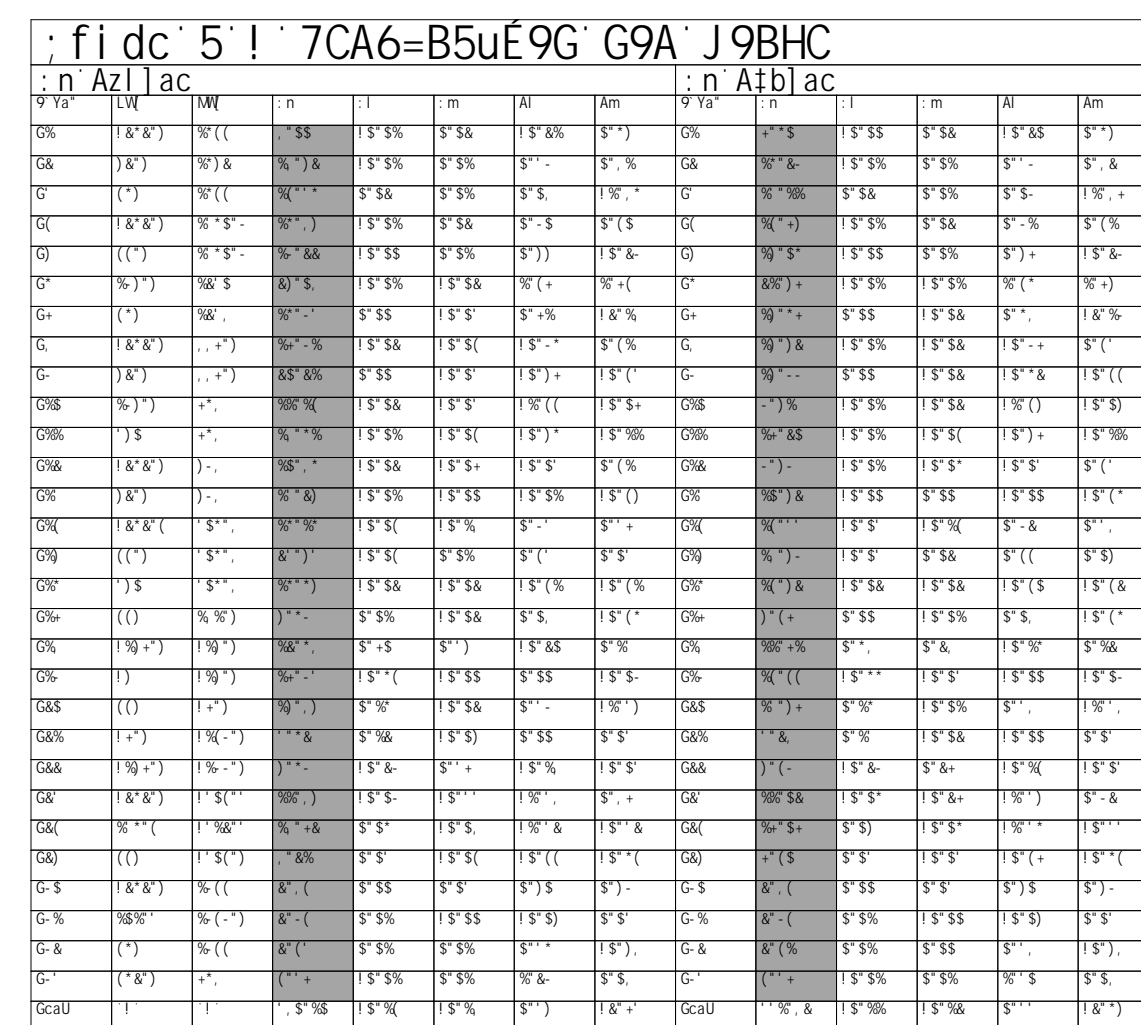
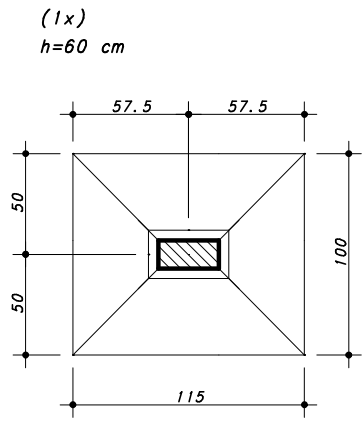
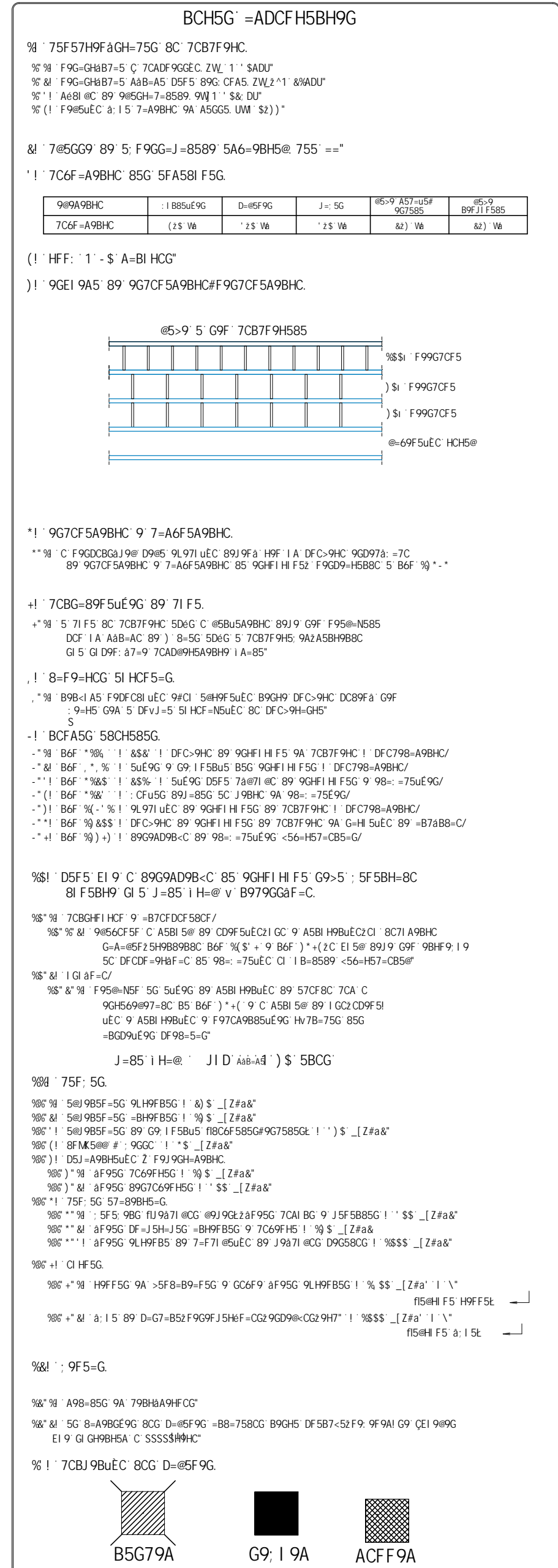
Sapata p/ - P7



Sapata p/ - P6



Sapata p/ - P15

[illegible]

&			
%			
\$	\$-#&\$-#&\$&)	>577GCB	9A+GGEC"=B=7-5@
FY	8UhU	5i hcf	5gqi bhc



7CB7F9HC			QAFS B 1 C
ZW 1 ' S	ADU		\$\$\$
7d-9942	PM AFOGADOS		89G B 1 C
GSF 5	C. EDUCACIONAL		\$\$\$
HH-HC	FUNDAÇÃO LOCAÇÃO e FORMA DA FUNDAÇÃO		
BSH	9C75H5	8K09B-C	99 1 C
\$- #S- #S&S)	% +)	9B1 I : B1 : CF1 \$\$\$ FSS	>577GCB
			99 1 C
			IT 75G