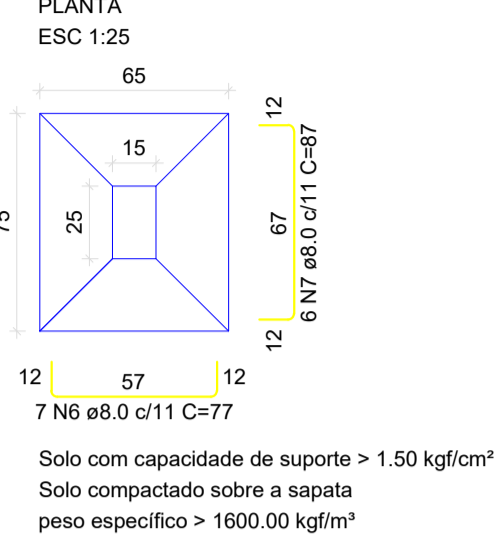
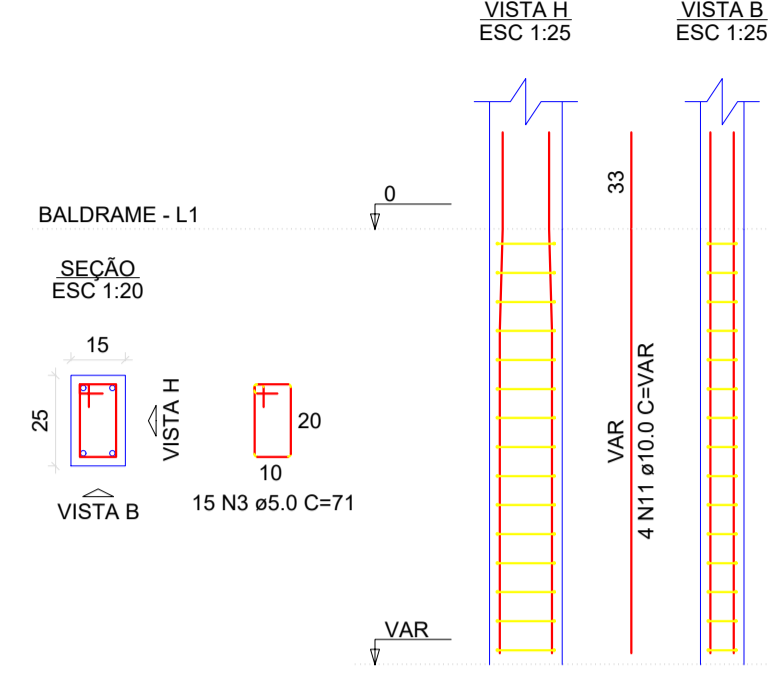


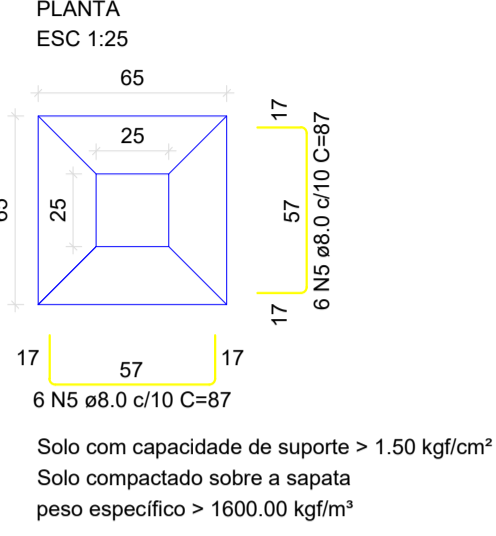
S2=S5=S7=S10=S15=S18=S23=S26=S31=S34=S36=S39



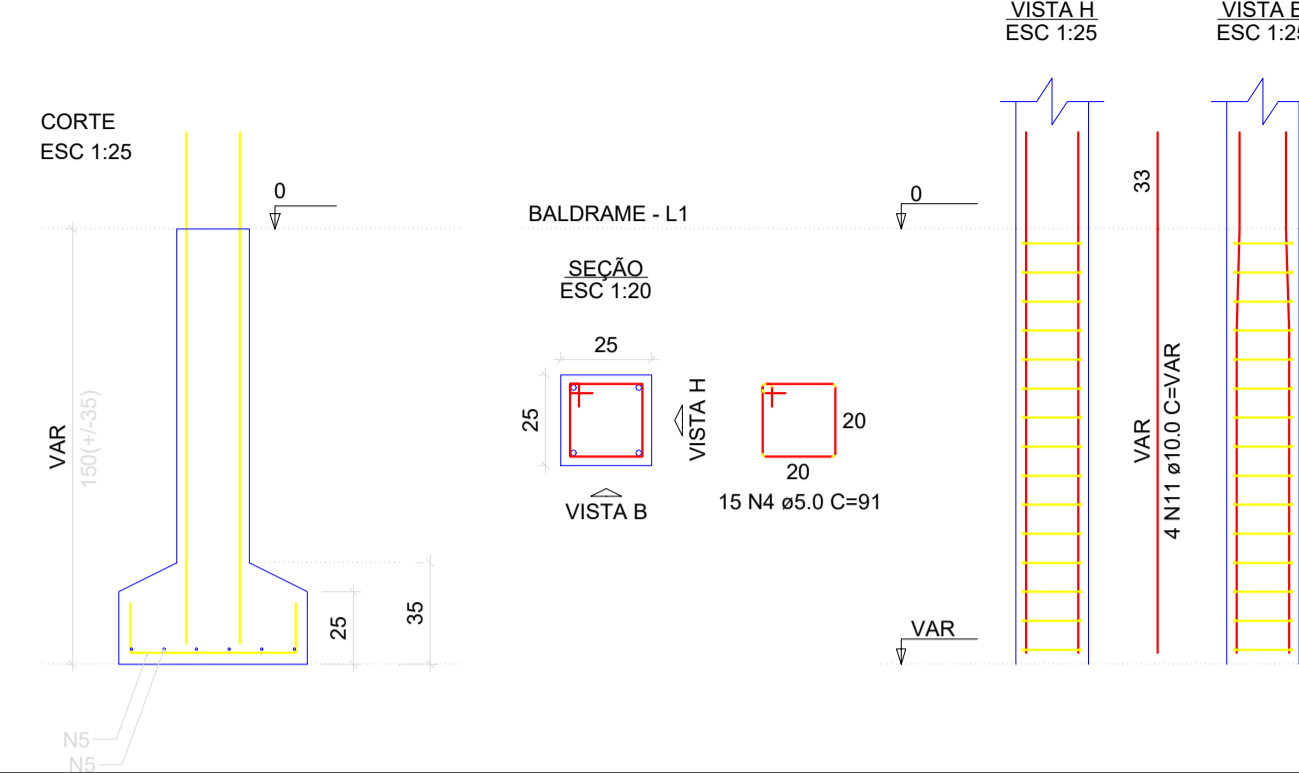
P2=P5=P7=P10=P15=P18=P23=P26=P31=P34=P36=P39



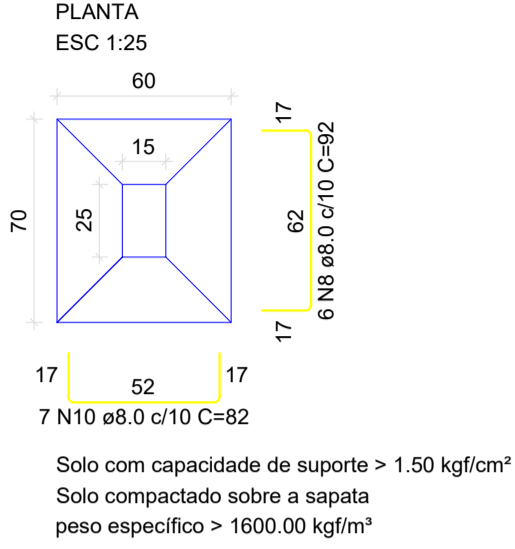
S3=S4=S37=S38



P3=P4=P37=P38



S8=S9=S12=S13=S16=S17=S20=S21=S24=S25=S28=S29=S32=S33



RELAÇÃO DO AÇO

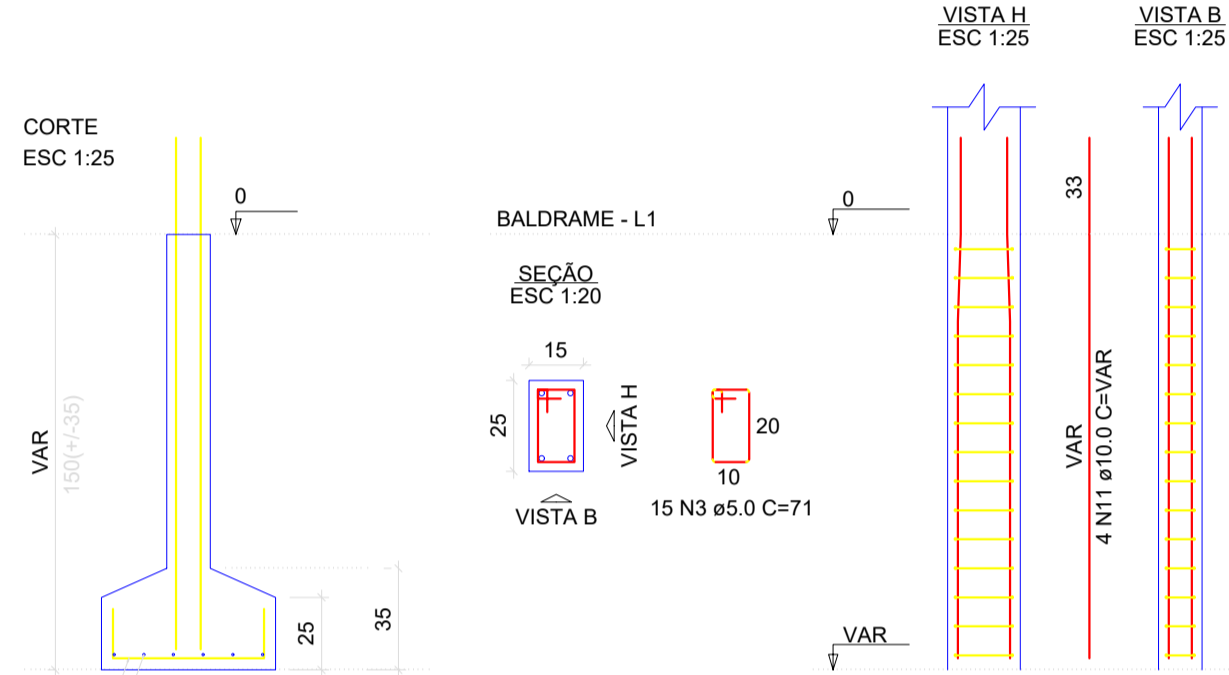
AÇO	N	DIAM (mm)	QUANT	C.UNIT (cm)	C.TOTAL (cm)
CA60	1	5.0	150	35	5250
CA50	2	5.0	150	111	16650
CA60	3	5.0	240	71	17040
CA50	4	5.0	60	91	5460
CA50	5	8.0	48	87	4176
CA50	6	8.0	84	77	6468
CA50	7	8.0	72	87	6264
CA50	8	8.0	164	92	15088
CA50	9	8.0	70	102	7140
CA50	10	8.0	98	82	8036
CA50	11	10.0	120	VAR	VAR

RESUMO DO AÇO

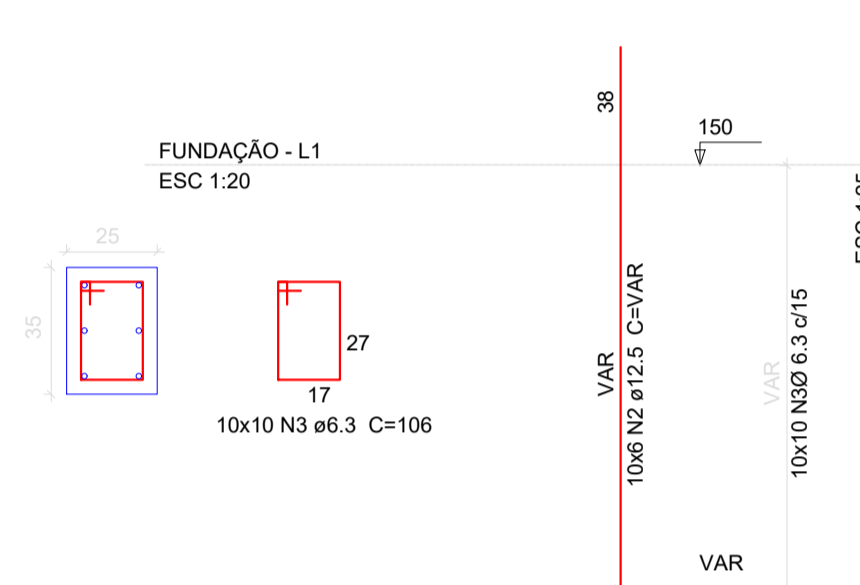
AÇO	DIAM (mm)	C.TOTAL (m)	PESO + 10% (kg)
CA50	8.0	471.7	234.7
CA60	5.0	444.0	131.1
PESO TOTAL (kg)			365.8
CA50			335.8
CA60			71.0

Volume de concreto (C-30) = 7.35 m³
Área de forma = 66.72 m²

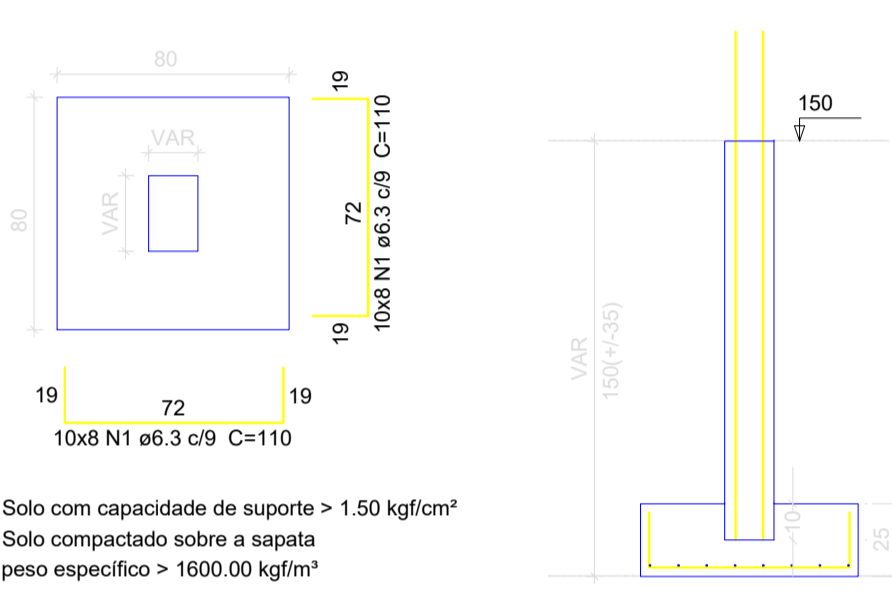
P8=P9=P12=P13=P16=P17=P20=P21=P24=P25=P28=P29=P32=P33



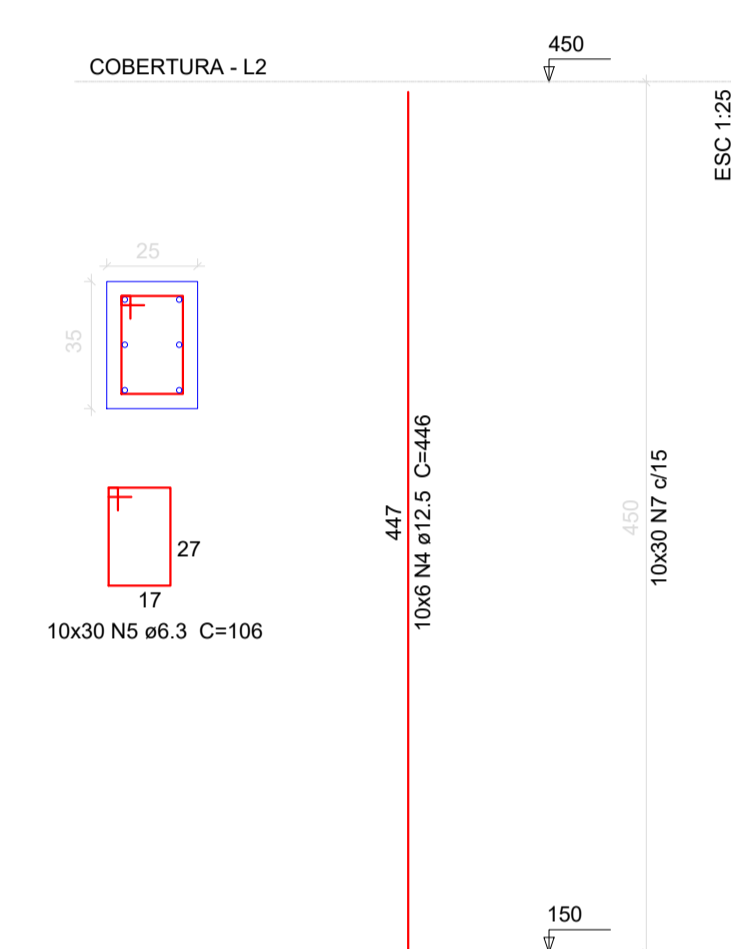
P1=P6=P11=P14=P19=P22=P27=P30=P35=P40



S1=S6=S11=S14=S19=S22=S27=S30=S35=S40



P1=P6=P11=P14=P19=P22=P27=P30=P35=P40



Relação do aço

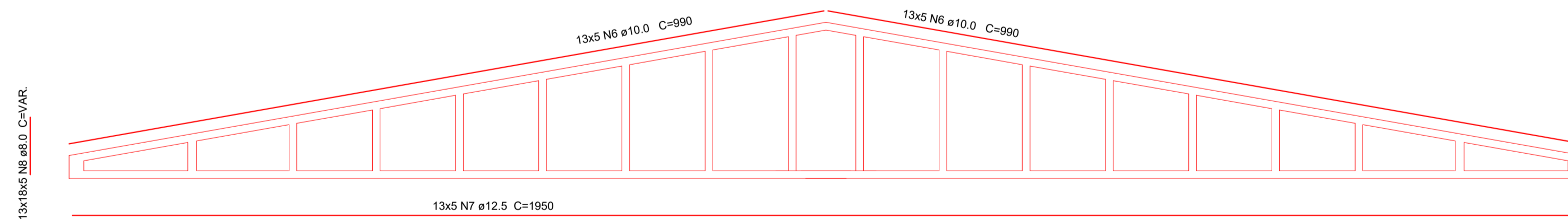
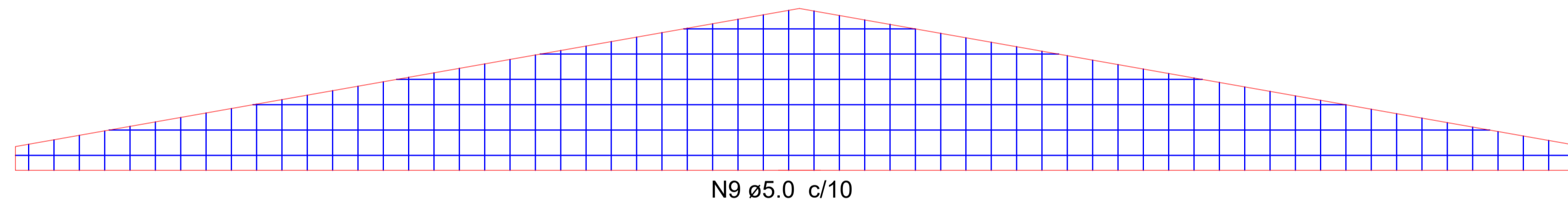
AÇO	N	DIAM	Q	UNIT (cm)	C.TOTAL (cm)
CA60	1	6.3	160	110	17600
CA60	2	12.5	60	188	11280
CA60	3	6.3	100	106	10600
CA60	4	12.5	60	446	26760
CA60	5	6.3	300	106	31800
CA50	6	10.0	130	990	128700
CA50	7	12.5	65	1950	126750
CA50	8	8.0	1170	100	117000
CA50	9	5.0	215	VAR.	39400

Resumo do aço

AÇO	DIAM	C.TOTAL (m)	PESO (kg)
CA50	6.3	600.0	156.0
CA50	8.0	1170.0	479.7
CA50	10.0	1287.0	785.1
CA50	12.5	1647.9	1582.0
CA60	5.0	394.0	63.1
PESO TOTAL			2666.8
CA50			3002.8
CA60			63.1

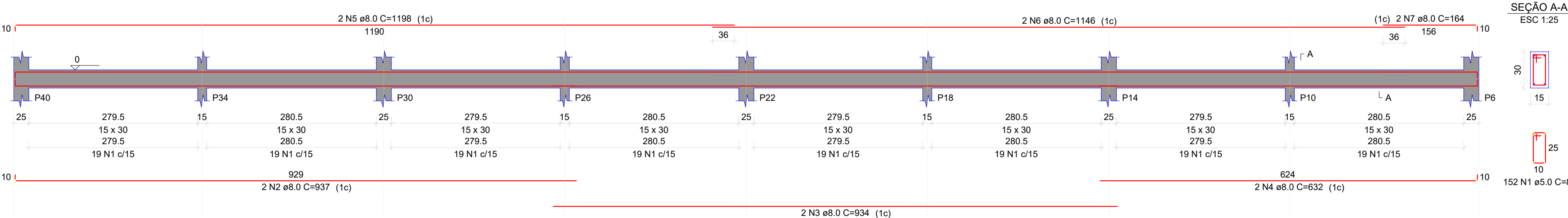
Concreto total (fck25Mpa) 18,10m³

Cobrimento 4cm



VIGA PRE-MOLDADA (VP)

V20



RELAÇÃO DO AÇO

AÇO	N	DIAM (mm)	QUANT	C.UNIT (cm)	C.TOTAL (cm)
CA60	1	5.0	152	81	12312
CA50	2	8.0	60	937	18744
CA50	3	8.0	60	934	18684
CA50	4	8.0	632	1264	12674
CA50	5	8.0	1198	2396	23964
CA50	6	8.0	1146	2392	23924
CA50	7	8.0	164	328	3284

RESUMO DO AÇO

AÇO	DIAM (mm)	C.TOTAL (m)	PESO + 10% (kg)
CA50	8.0	100.2	43.5
CA60	5.0	123.1	29.9
PESO TOTAL (kg)			73.4
CA50			43.5
CA60			29.9

Volume de concreto (C-30) = 1.09 m³
Área de forma = 18.19 m²



PROJETO ESTRUTURAL GALPÃO 2/6

CONSTRUÇÃO DO MERCADO DE SÃO JOSÉ DE ALCOBACA

SÃO JOSÉ DE ALCOBACA - ALCOBACA /BA

Responsável Técnico pelo Projeto, Orçamento e Visita:

GIVANILDO GONÇALVES CRUZ - ENG. CIVIL
CREA BA: 051021928-4

DATA: NOVEMBRO / 2022 ESCALA: INDICADA ESPECIFICAÇÃO: FORMATO: A1