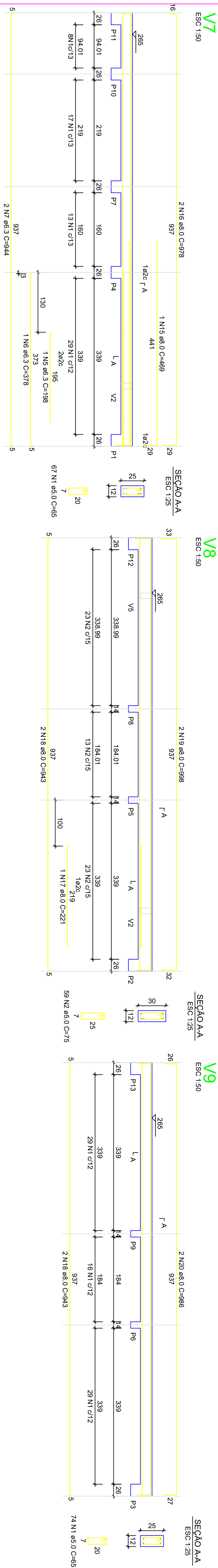
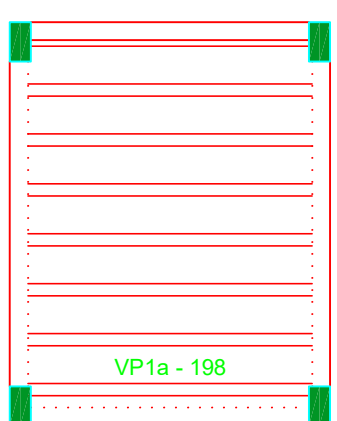
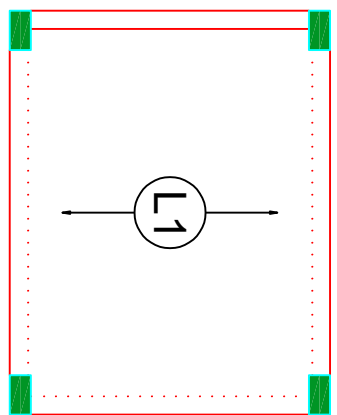


	2 N 8 #6.3 C-590		2 N 8 #6.3 C-590		2 N 8 #6.3 C-590		2 N 8 #6.3 C-590		2 N 8 #6.3 C-590		2 N 8 #6.3 C-590		2 N 8 #6.3 C-590
	2 N 8 #6.3 C-590		2 N 8 #6.3 C-590		2 N 8 #6.3 C-590		2 N 8 #6.3 C-590		2 N 8 #6.3 C-590		2 N 8 #6.3 C-590		2 N 8 #6.3 C-590
	2 N 8 #6.3 C-590		2 N 8 #6.3 C-590		2 N 8 #6.3 C-590		2 N 8 #6.3 C-590		2 N 8 #6.3 C-590		2 N 8 #6.3 C-590		2 N 8 #6.3 C-590
	2 N 8 #6.3 C-590		2 N 8 #6.3 C-590		2 N 8 #6.3 C-590		2 N 8 #6.3 C-590		2 N 8 #6.3 C-590		2 N 8 #6.3 C-590		2 N 8 #6.3 C-590
	2 N 8 #6.3 C-590		2 N 8 #6.3 C-590		2 N 8 #6.3 C-590		2 N 8 #6.3 C-590		2 N 8 #6.3 C-590		2 N 8 #6.3 C-590		2 N 8 #6.3 C-590
	2 N 8 #6.3 C-590		2 N 8 #6.3 C-590		2 N 8 #6.3 C-590		2 N 8 #6.3 C-590		2 N 8 #6.3 C-590		2 N 8 #6.3 C-590		2 N 8 #6.3 C-590
	2 N 8 #6.3 C-590		2 N 8 #6.3 C-590		2 N 8 #6.3 C-590		2 N 8 #6.3 C-590		2 N 8 #6.3 C-590		2 N 8 #6.3 C-590		2 N 8 #6.3 C-590
	2 N 8 #6.3 C-590		2 N 8 #6.3 C-590		2 N 8 #6.3 C-590		2 N 8 #6.3 C-590		2 N 8 #6.3 C-590		2 N 8 #6.3 C-590		2 N 8 #6.3 C-590
	2 N 8 #6.3 C-590		2 N 8 #6.3 C-590		2 N 8 #6.3 C-590		2 N 8 #6.3 C-590		2 N 8 #6.3 C-590		2 N 8 #6.3 C-590		2 N 8 #6.3 C-590
	2 N 8 #6.3 C-590		2 N 8 #6.3 C-590		2 N 8 #6.3 C-590		2 N 8 #6.3 C-590		2 N 8 #6.3 C-590		2 N 8 #6.3 C-590		2 N 8 #6.3 C-590
	2 N 8 #6.3 C-590		2 N 8 #6.3 C-590		2 N 8 #6.3 C-590		2 N 8 #6.3 C-590		2 N 8 #6.3 C-590		2 N 8 #6.3 C-590		2 N 8 #6.3 C-590
	2 N 8 #6.3 C-590		2 N 8 #6.3 C-590		2 N 8 #6.3 C-590		2 N 8 #6.3 C-590		2 N 8 #6.3 C-590		2 N 8 #6.3 C-590		2

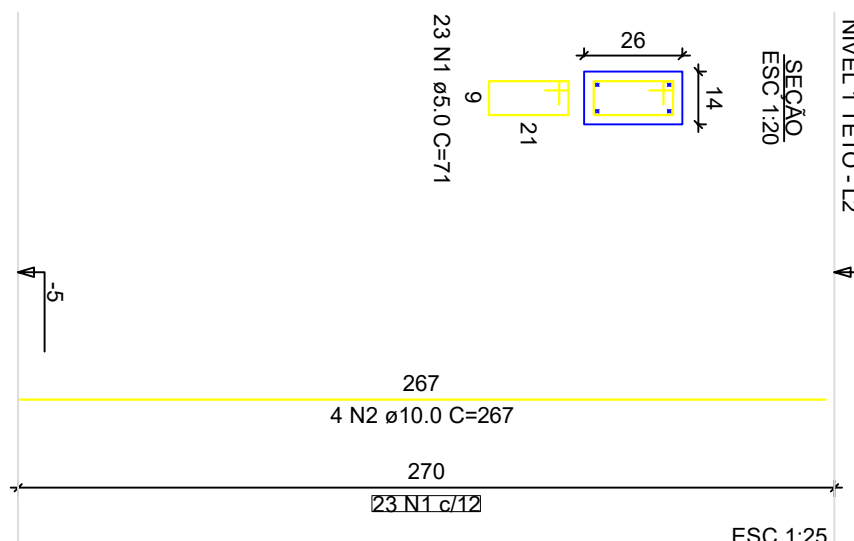


ATENÇÃO: Prever armaduras de espertas e respectivos pilares de amarração das paredes laterais, junto ao telhado (ótalo), conforme método construtivo empregado.



Armação positiva das lajes do pavimento Nivel 1 Teto
escala 1:50

Planta de vigotas pré-moldadas
escala 1:50

$$\begin{aligned} P_1 &= P_2 = P_3 = P_4 = P_5 = P_6 = P_7 = \\ &= P_8 = P_9 = P_{10} = P_{11} = P_{12} = \\ &= P_{13} \end{aligned}$$


Novo PAC FHNIS Sub50

PROJETO ESTRUTURAL

PLANTA DE ARMADURAS

NÍVEL 1 TETO

CAIXA

projeto estrutural exemplo, de uso facultado,
conforme observações ao lado.

Desenho: xxx	DESENHO 01
Escala: Indicada	Revisão: 01
Data: 09/05/25	Unidade: cm
	FOLHA 03/03

FORMATO A1 - INTERNO: 801 x 574 mm
ESTERNO: 841 x 594 mm.