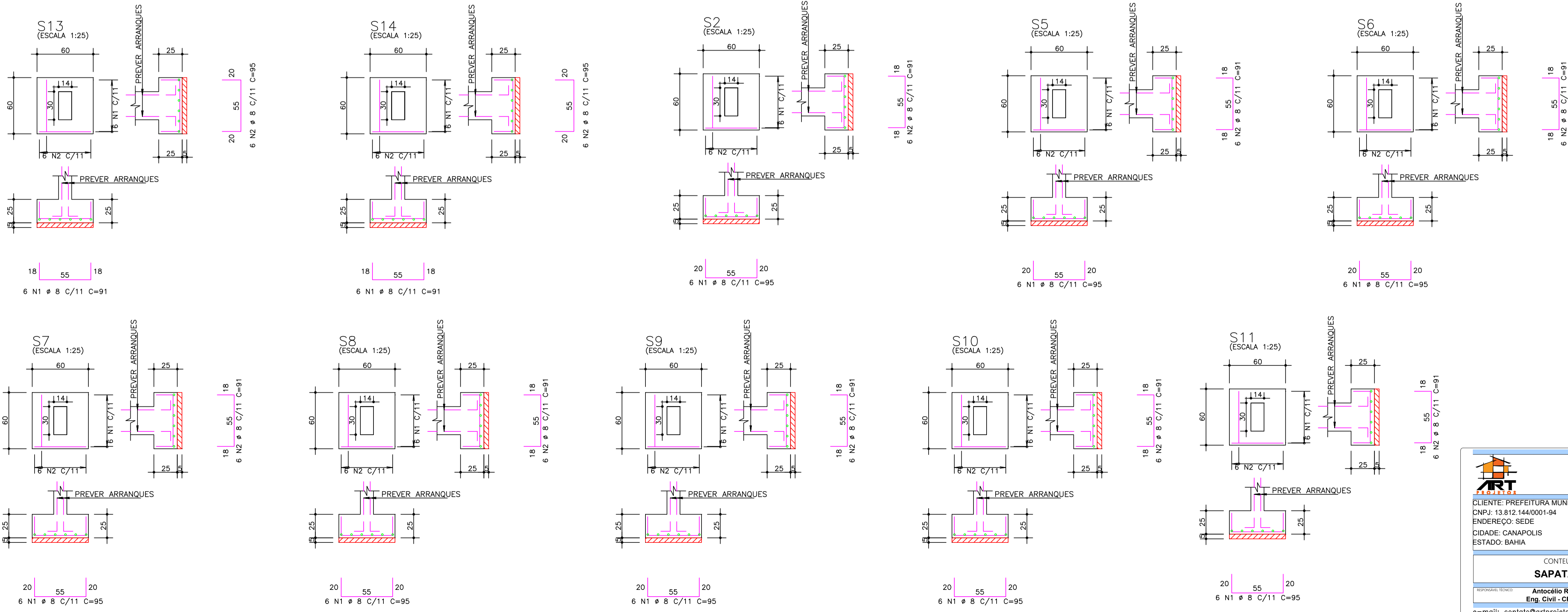
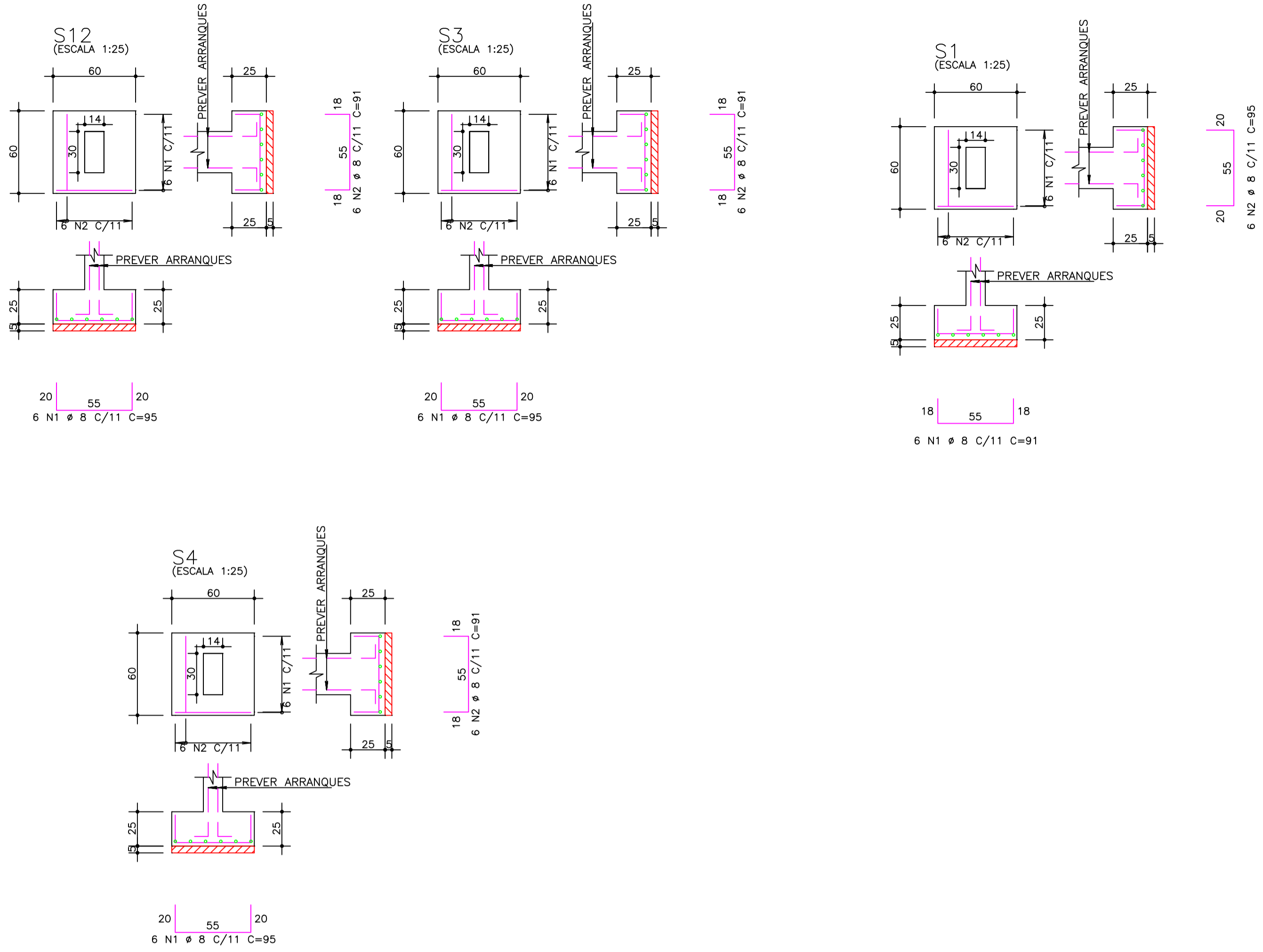


ESTUDO - NÃO EXECUTAR



AÇO	POS	BIT	QUANT	COMPRIMENTO		
				UNIT	TOTAL	
		mm		cm	cm	
S1	50A	1	8	6	91	546
	50A	2	8	6	95	570
S2	50A	1	8	6	95	570
	50A	2	8	6	91	546
S3	50A	1	8	6	95	570
	50A	2	8	6	91	546
S4	50A	1	8	6	95	570
	50A	2	8	6	91	546
S5	50A	1	8	6	95	570
	50A	2	8	6	91	546
S6	50A	1	8	6	95	570
	50A	2	8	6	91	546
S7	50A	1	8	6	95	570
	50A	2	8	6	91	546
S8	50A	1	8	6	95	570
	50A	2	8	6	91	546
S9	50A	1	8	6	95	570
	50A	2	8	6	91	546
S10	50A	1	8	6	95	570
	50A	2	8	6	91	546
S11	50A	1	8	6	95	570
	50A	2	8	6	91	546
S12	50A	1	8	6	95	570
	50A	2	8	6	91	546
S13	50A	1	8	6	91	546
	50A	2	8	6	95	570
S14	50A	1	8	6	91	546
	50A	2	8	6	95	570

RESUMO DE AÇO			
AÇO	BIT	COMPR	PESO
		m	kgf
50A	8	156	62
Peso Total		50A =	62 kgf

S1 / S2 / S3 / S4 / S5  
S6 / S7 / S8 / S9 / S10  
S11 / S12 / S13 / S14

**ESTRUTURAL**

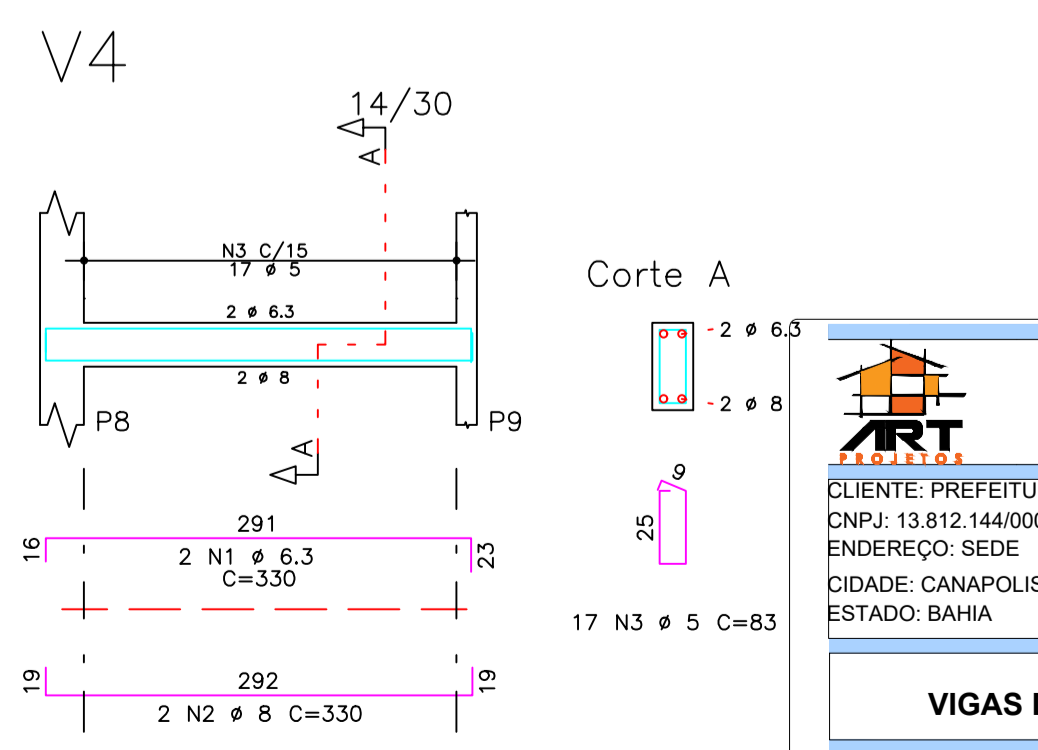
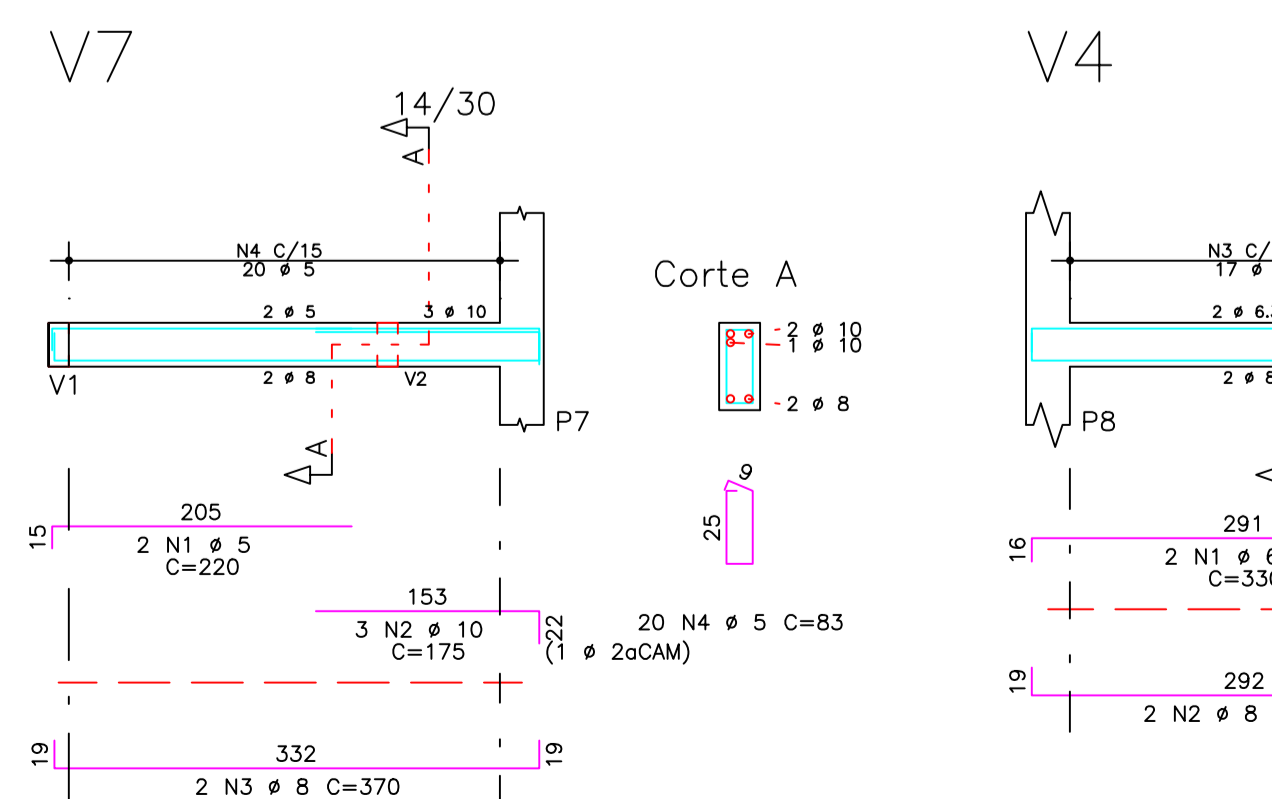
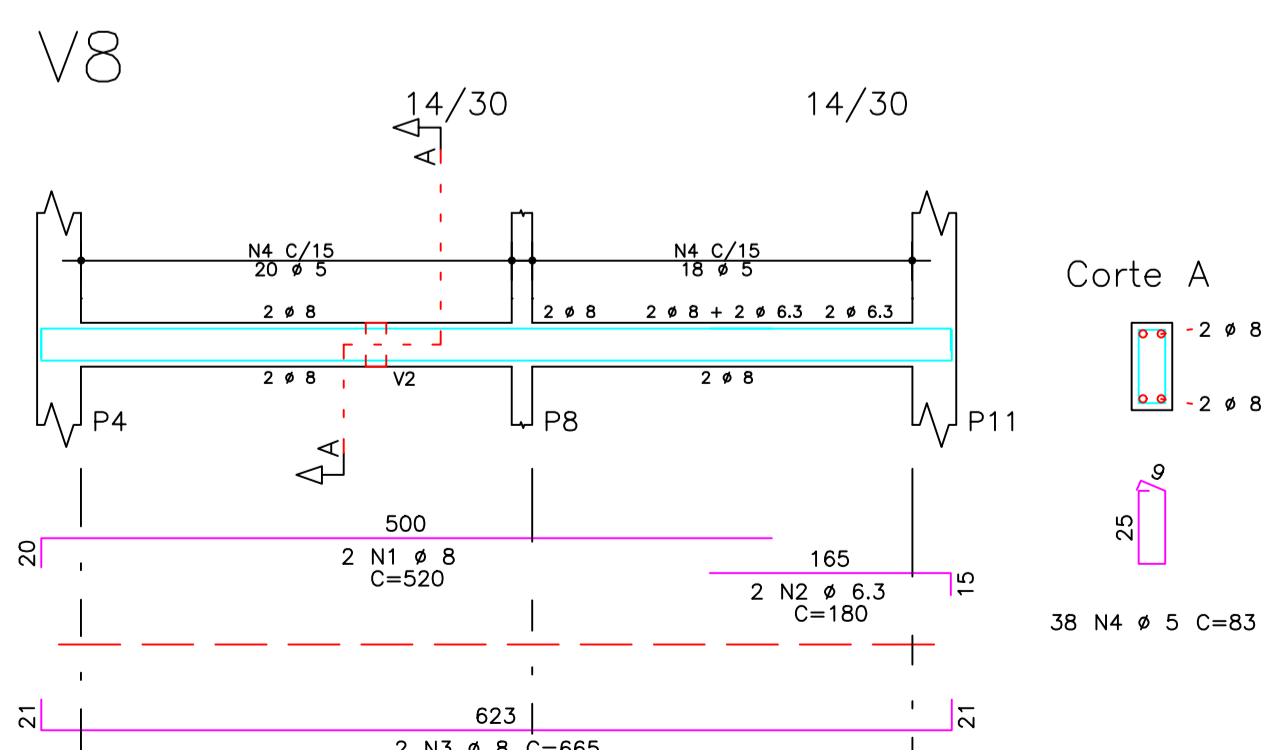
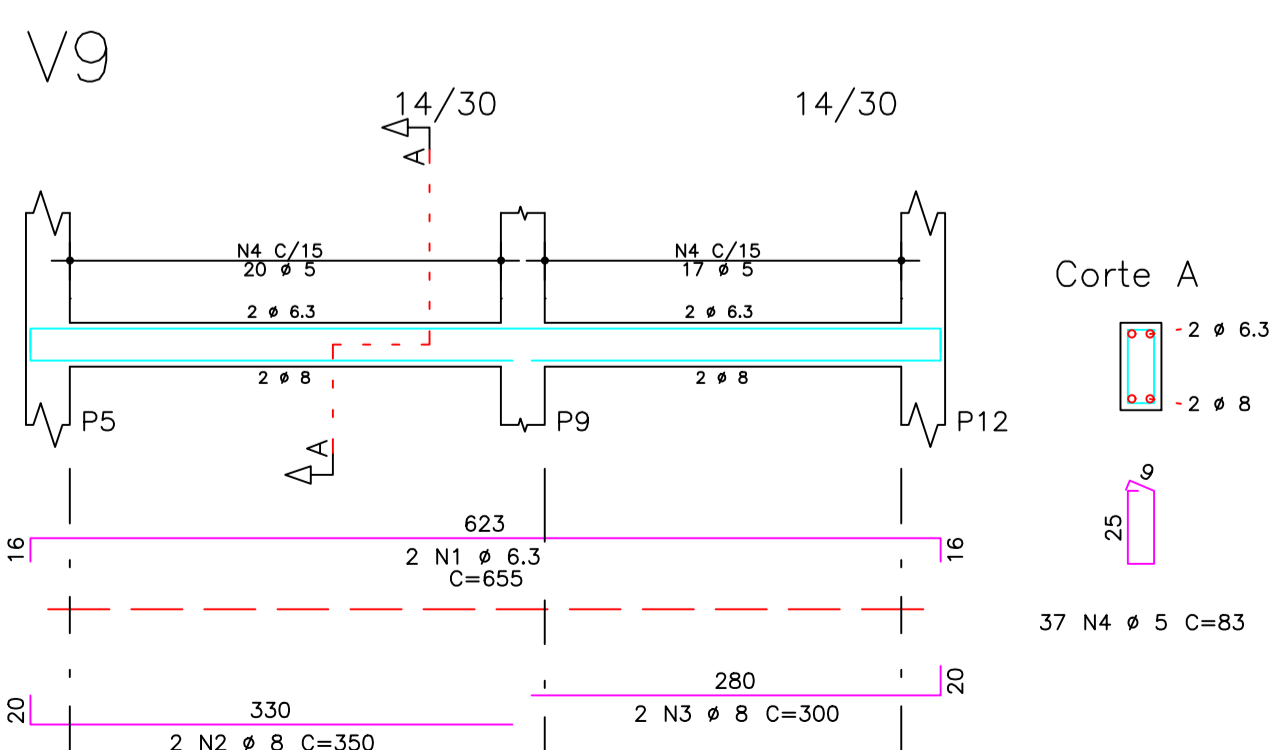
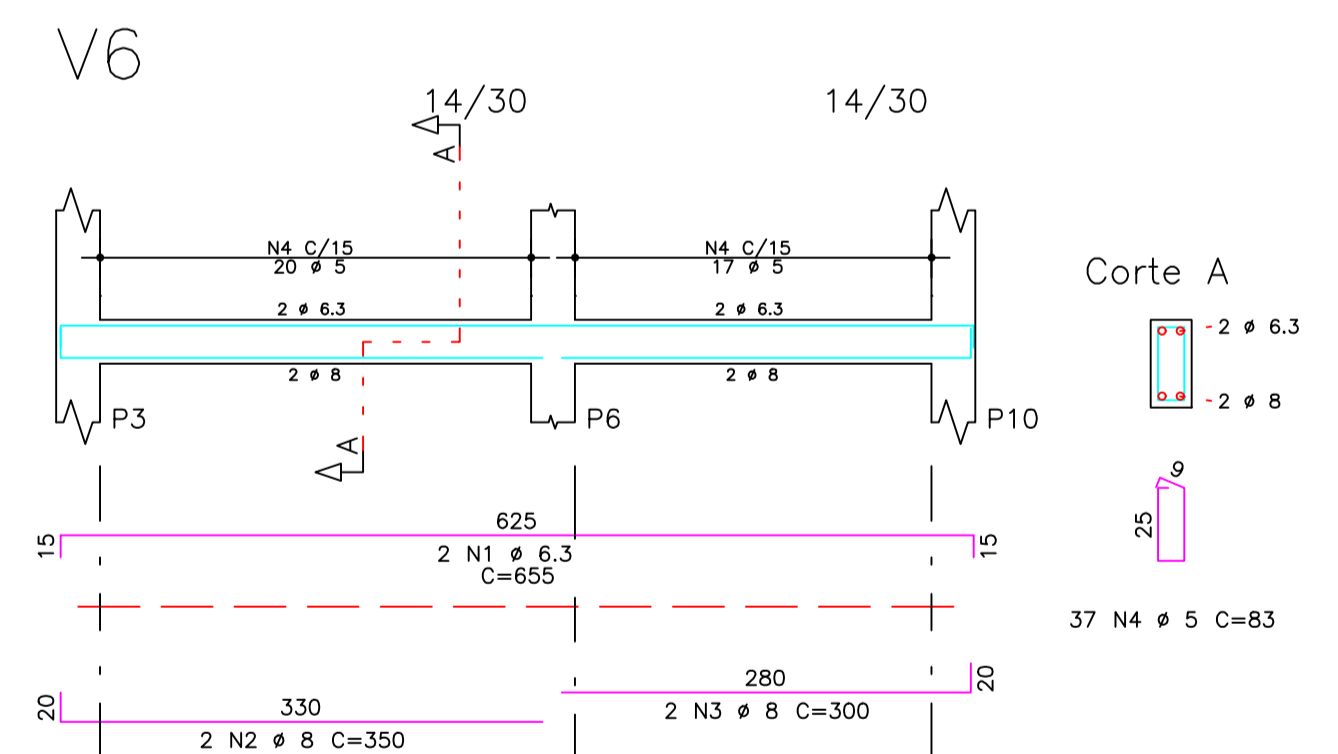
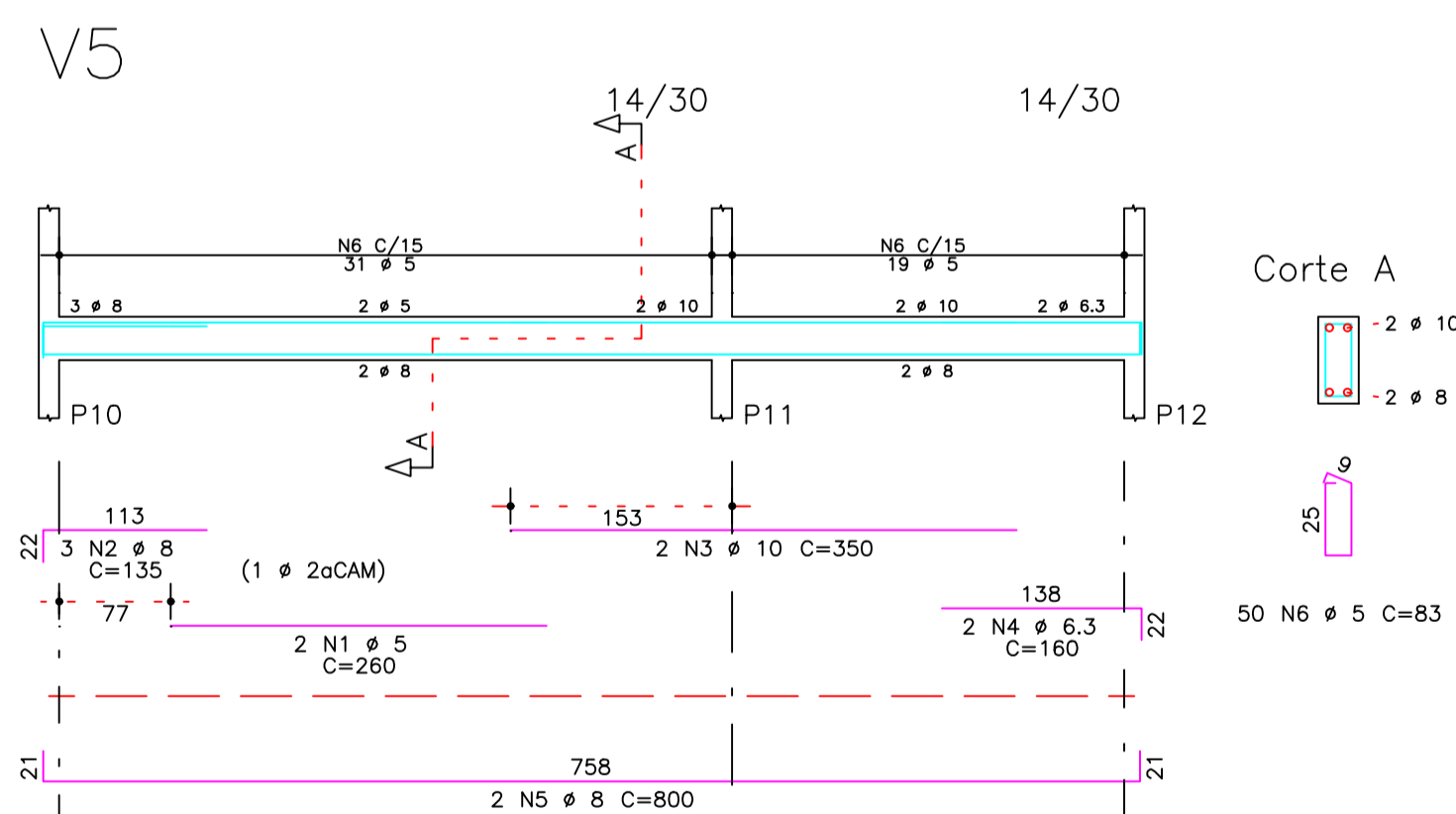
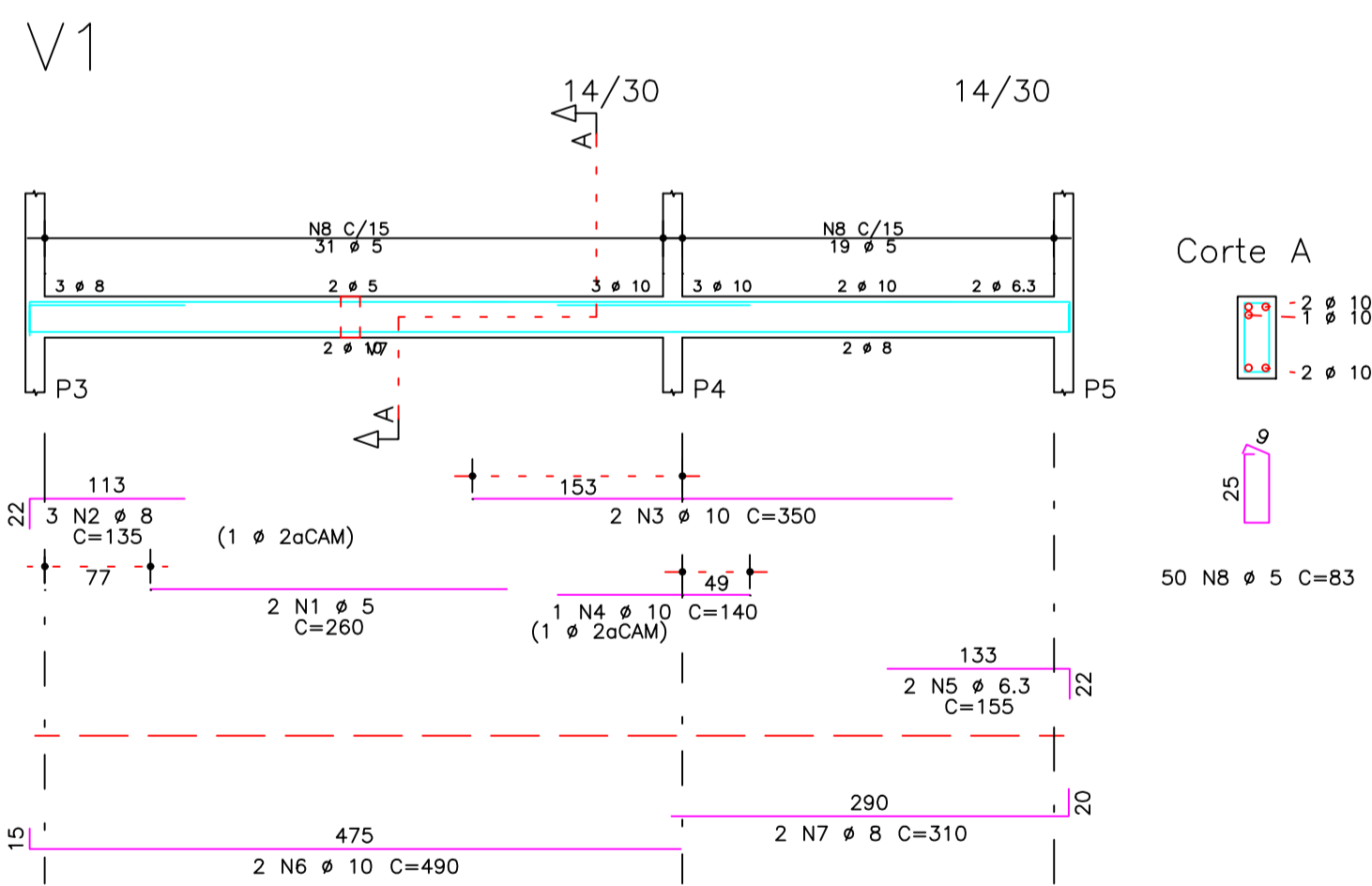
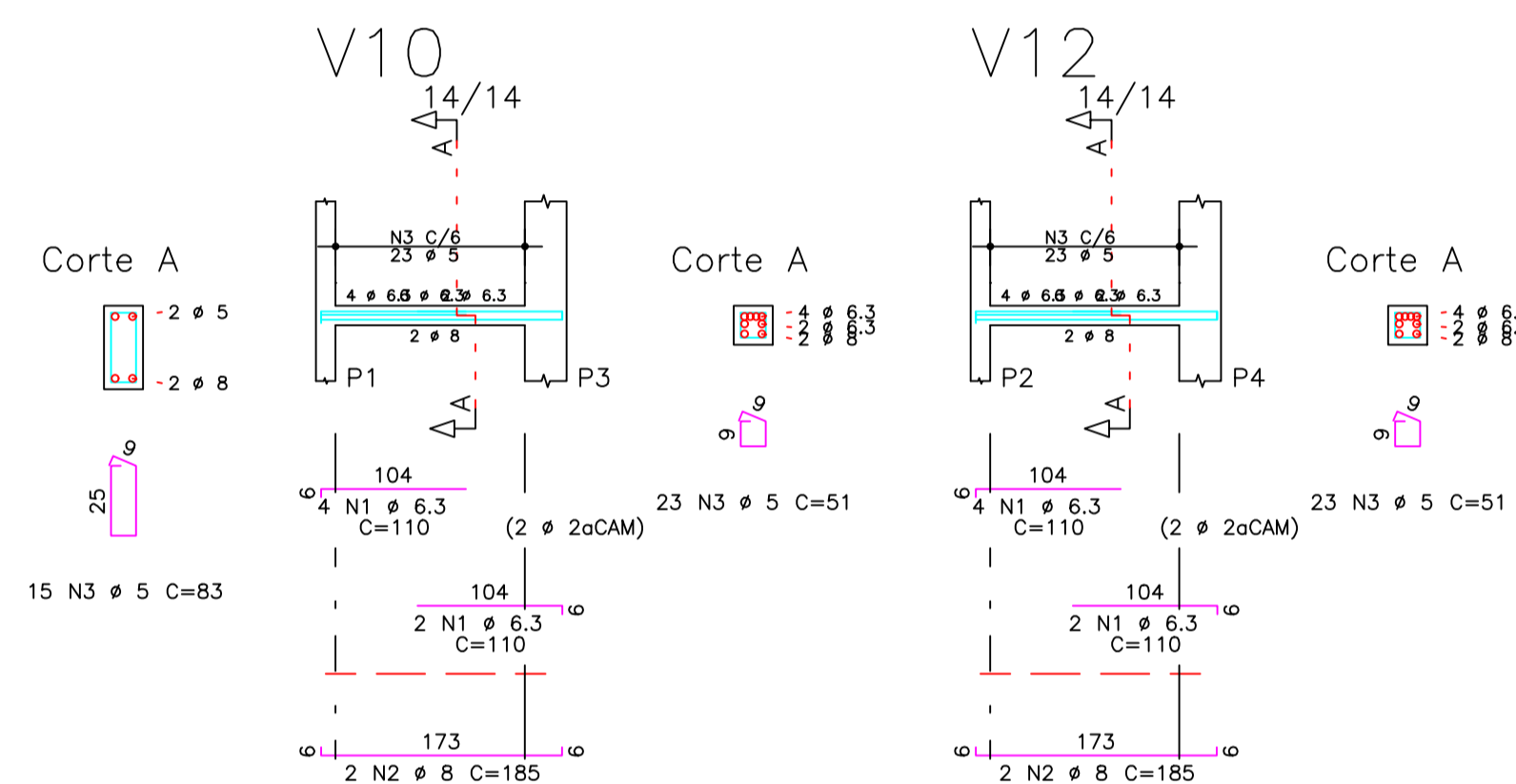
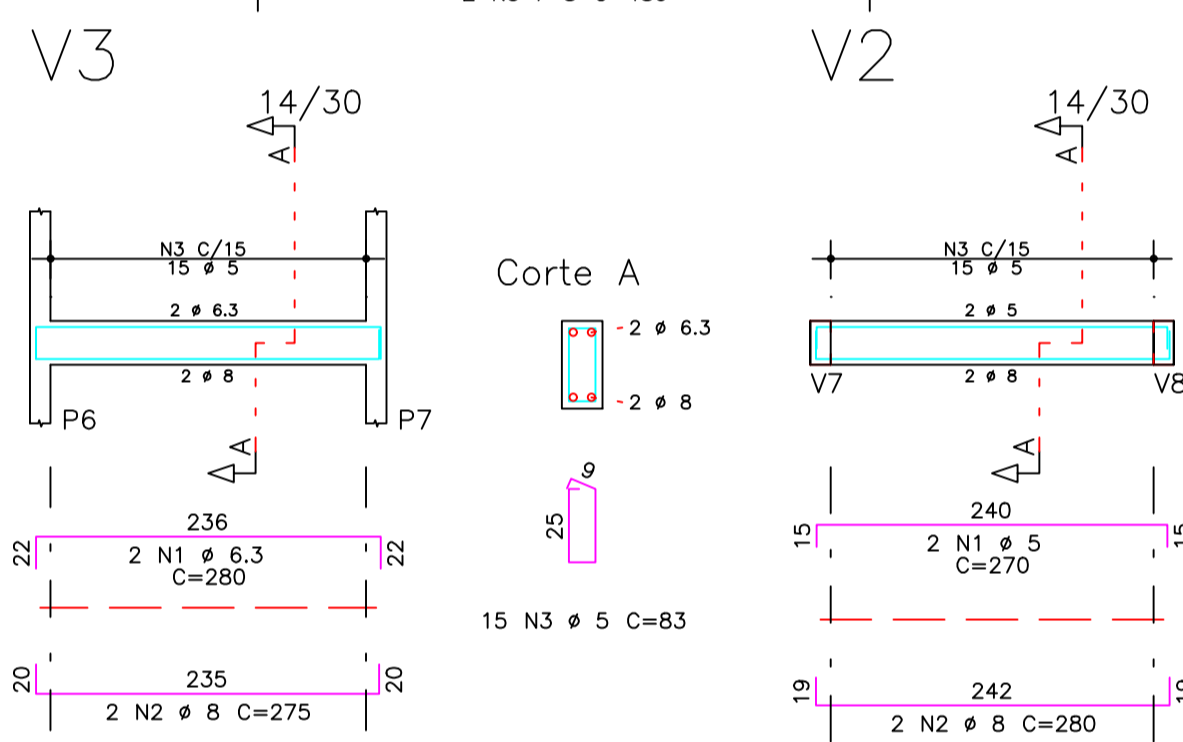
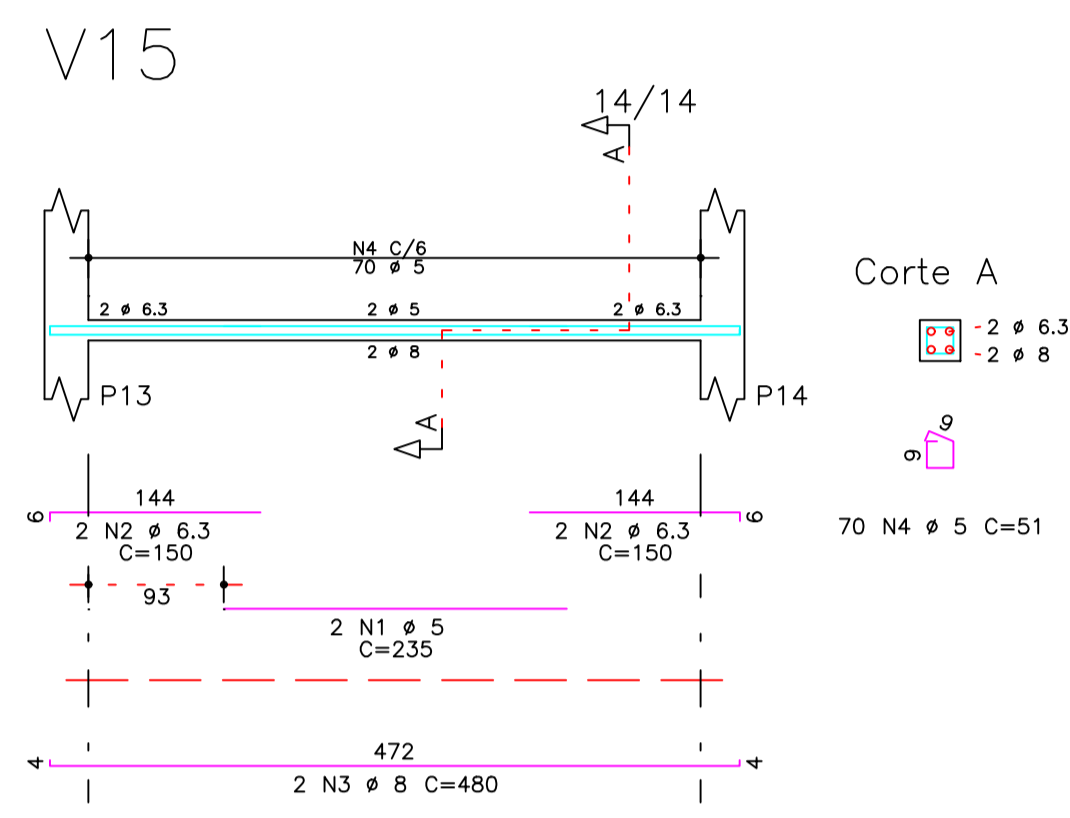
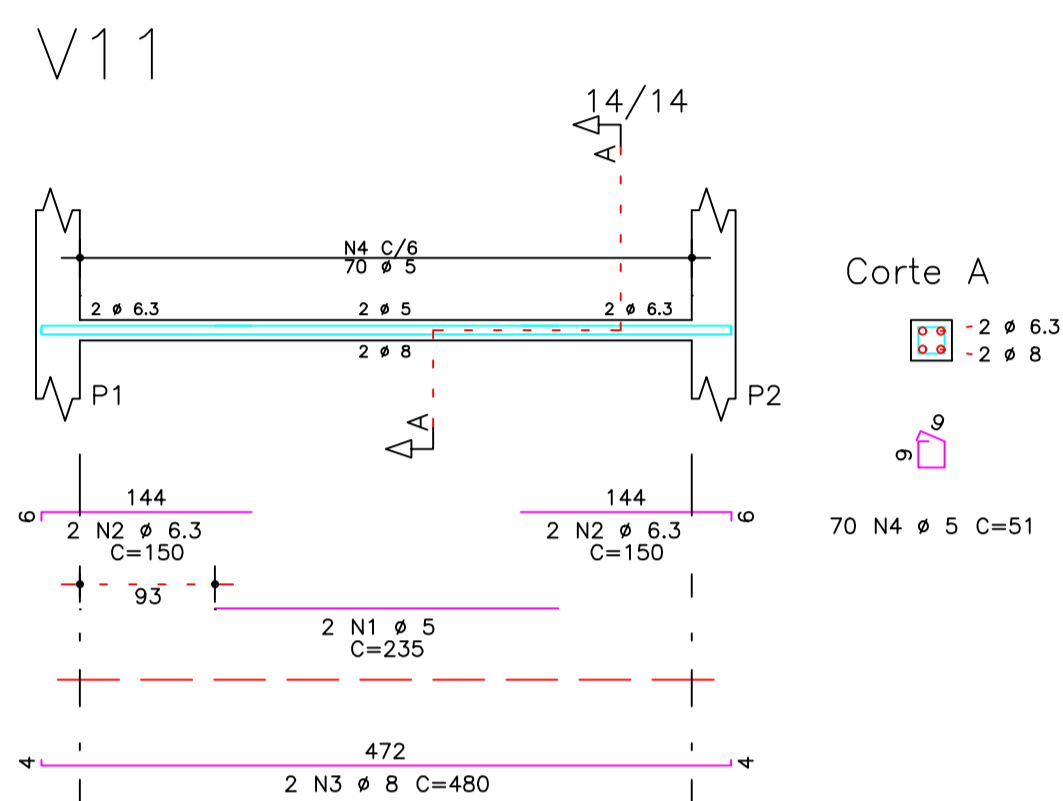
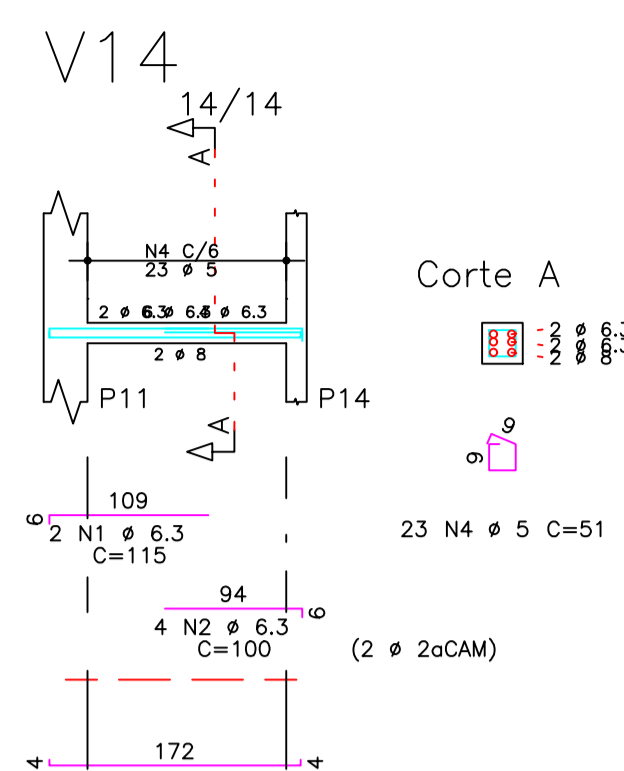
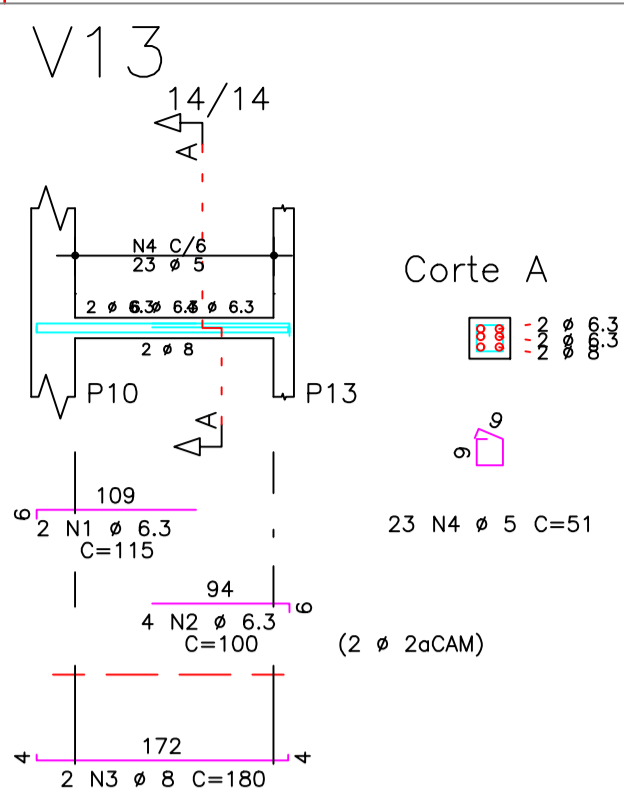
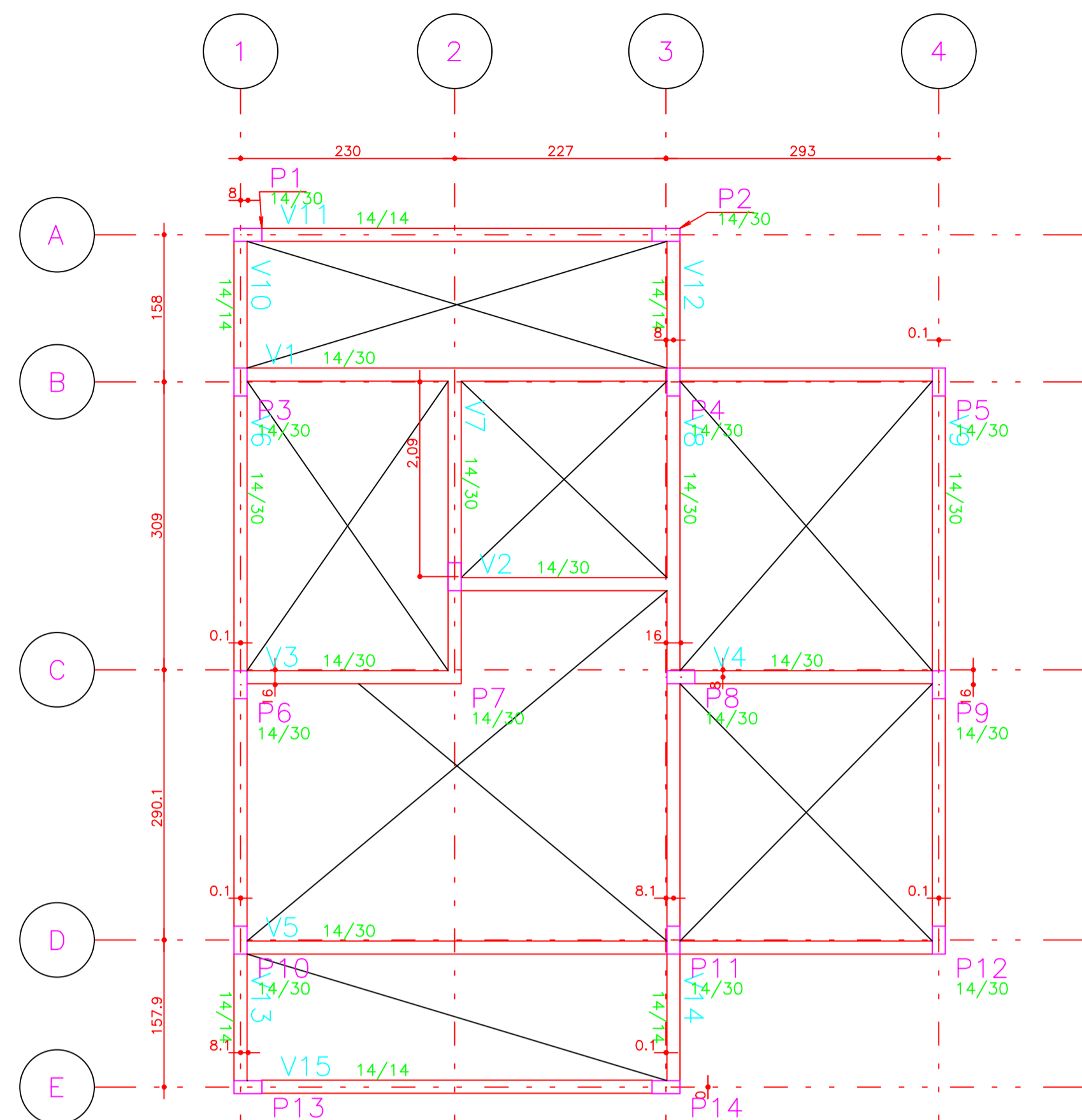
CLIENTE: PREFEITURA MUNICIPAL DE CANAPLIS  
 CNPJ: 13.812.144/0001-94  
 ENDEREÇO: SEDE  
 CIDADE: CANAPOLIS  
 ESTADO: BAHIA

OBRA:  
PÚBLICO  
Térreo: 48,20M²  
Varanda: 14,40M²  
Área Total: 62,20M²

CONTEÚDO: <b>SAPATAS</b>	ESCALA: <b>1:100</b>	REVISÃO: <b>0/0</b>
RESPONSÁVEL TÉCNICO: Antônio Ribeiro Teixeira Eng. Civil - CREA-BA 42370/D	DATA: <b>15/08/2025</b>	FOLHA: <b>1/4</b>

e-mail: contato@arprojetos.com.br





AÇO	POS	BIT	QUANT	COMPRIMENTO		
				UNIT	TOTAL	
		mm		cm	cm	
V1	60B	1	5	2	260	520
V1	50A	2	8	3	135	405
V1	50A	3	10	2	350	700
V1	50A	4	10	1	140	140
V1	50A	5	6.3	2	155	310
V1	50A	6	10	2	490	980
V1	50A	7	8	2	310	620
V1	60B	8	5	50	83	4150
V2	60B	1	5	2	270	540
V2	50A	2	8	2	280	560
V2	60B	3	5	15	83	1245
V3	50A	1	6.3	2	280	560
V3	50A	2	8	2	275	550
V3	60B	3	5	15	83	1245
V4	50A	1	6.3	2	330	660
V4	50A	2	8	2	330	660
V4	60B	3	5	17	83	1411
V5	60B	1	5	2	260	520
V5	50A	2	8	3	135	405
V5	50A	3	10	2	350	700
V5	50A	4	6.3	2	160	320
V5	50A	5	8	2	800	1600
V5	60B	6	5	50	83	4150
V6	50A	1	6.3	2	655	1310
V6	50A	2	8	2	350	700
V6	50A	3	8	2	300	600
V6	60B	4	5	37	83	3071
V7	60B	1	5	2	220	440
V7	50A	2	10	3	175	525
V7	50A	3	8	2	370	740
V7	60B	4	5	20	83	1660
V8	50A	1	8	2	520	1040
V8	50A	2	6.3	2	180	360
V8	50A	3	8	2	665	1330
V8	60B	4	5	38	83	3154
V9	50A	1	6.3	2	655	1310
V9	50A	2	8	2	350	700
V9	50A	3	8	2	300	600
V9	60B	4	5	37	83	3071
V10	50A	1	6.3	6	110	660
V10	50A	2	8	2	185	370
V10	60B	3	5	23	51	1173
V11	60B	1	5	2	235	470
V11	50A	2	6.3	4	150	600
V11	50A	3	8	2	480	960
V11	60B	4	5	70	51	3570
V12	50A	1	6.3	6	110	660
V12	50A	2	8	2	185	370
V12	60B	3	5	23	51	1173
V13	50A	1	6.3	2	115	230
V13	50A	2	6.3	4	100	400
V13	50A	3	8	2	180	360
V13	60B	4	5	23	51	1173
V14	50A	1	6.3	2	115	230
V14	50A	2	6.3	4	100	400
V14	50A	3	8	2	180	360
V14	60B	4	5	23	51	1173
V15	60B	1	5	2	235	470
V15	50A	2	6.3	4	150	600
V15	50A	3	8	2	480	960
V15	60B	4	5	70	51	3570

RESUMO DE AÇO			
AÇO	BIT	COMPR	PESO
		m	kgf
60B	5	379	58
50A	6.3	86	21
50A	8	139	55
50A	10	30	19
Peso Total 60B =			58 kgf
Peso Total 50A =			95 kgf

V1 / V2 / V3 / V4 / V5  
V6 / V7 / V8 / V9 / V10  
V11 / V12 / V13 / V14

**ESTRUTURAL**

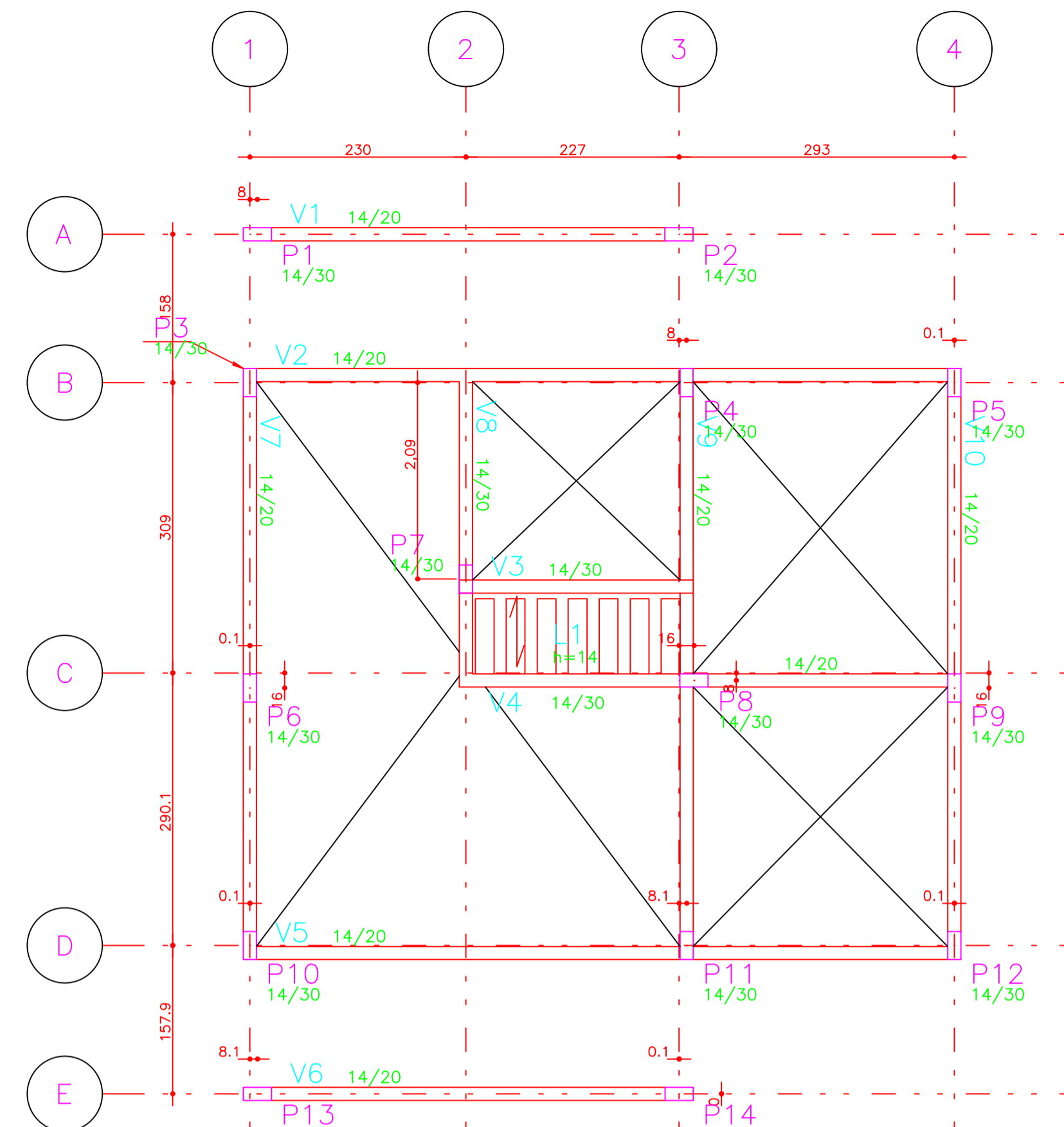
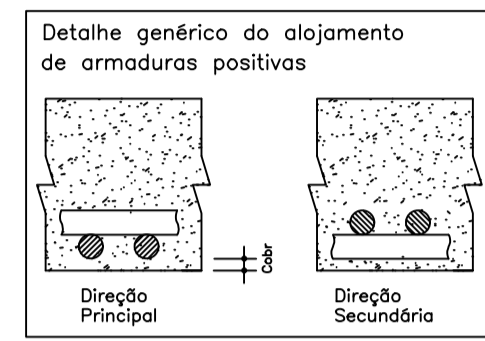
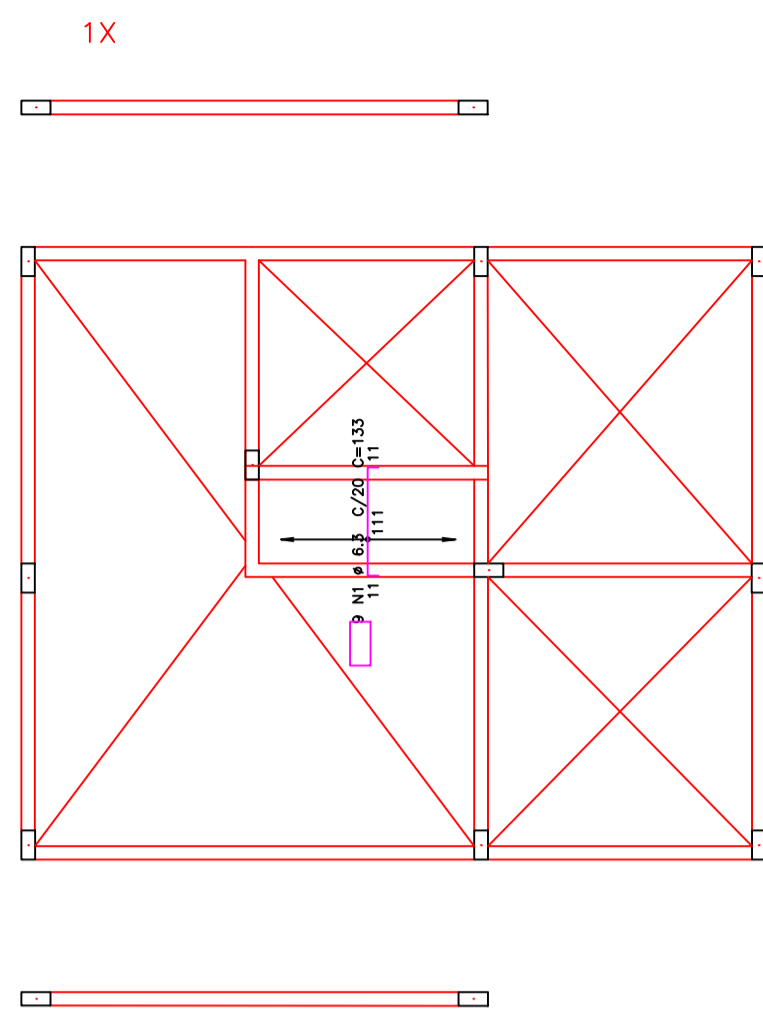
CLIENTE: PREFEITURA MUNICIPAL DE CANAPLIS  
 CNPJ: 13.812.144/0001-94  
 ENDEREÇO: SEDE  
 CIDADE: CANAPLIS  
 ESTADO: BAHIA

OBRA:  
PÚBLICO  
Térreo: 48,20M²  
Varanda: 14,40M²  
Área Total: 62,20M²

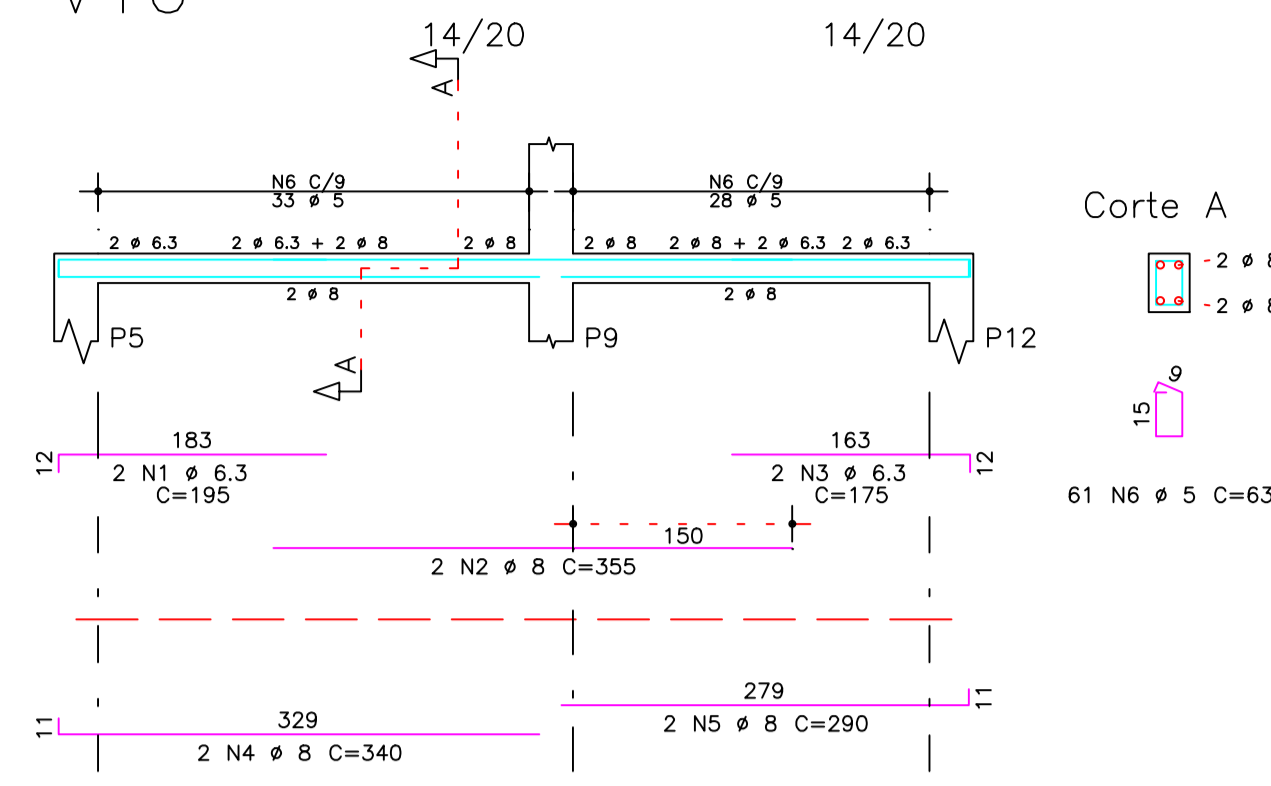
CONTEÚDO: <b>VIGAS DE FUNDAÇÃO</b>	ESCALA: <b>1:25</b>	REVISÃO: <b>0/0</b>
RESPONSÁVEL TÉCNICO: Antônio Ribeiro Teixeira Eng. Civil - CREA-BA 42370/D	DATA: <b>15/08/2025</b>	FOLHA: <b>3/4</b>

e-mail: contato@arprojetos.com.br

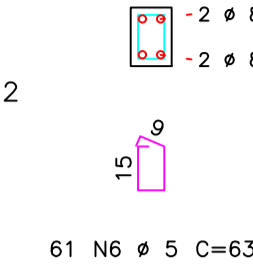
LAJE – Armadura negativa vertical



V10



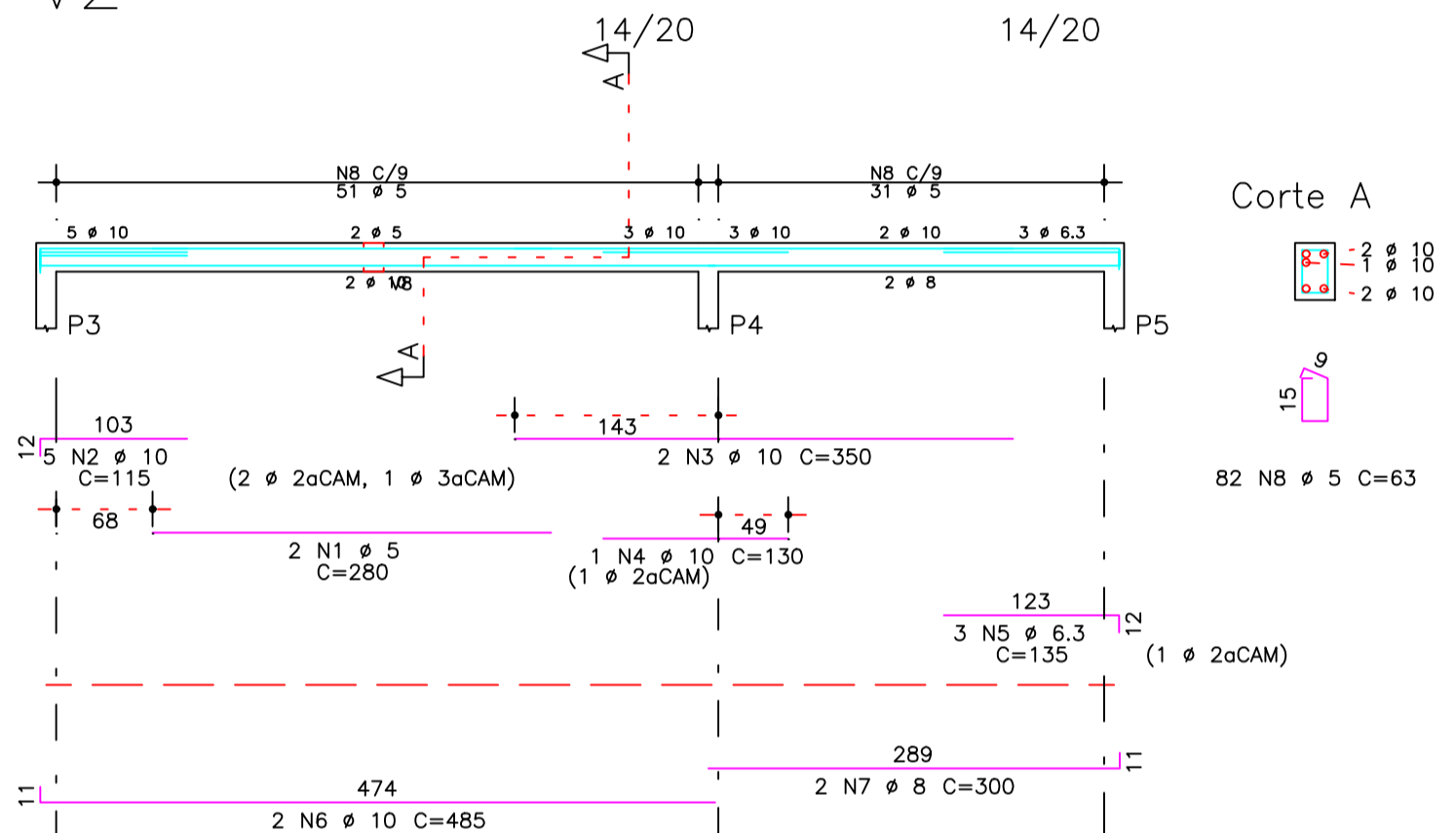
Corte A



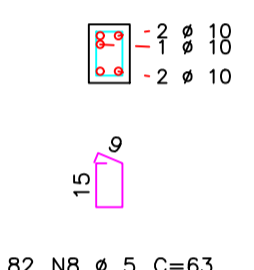
AÇO	POS	BIT	QUANT	COMPRIMENTO	
				UNIT	TOTAL
				cm	cm
LAJE – Armadura negativa vertical					
50A	1	6.3	9	133	1197
V1					
60B	1	5	2	225	450
50A	2	10	6	160	960
50A	3	8	2	495	990
60B	4	5	47	63	2961
V2					
60B	1	5	2	280	560
50A	2	10	5	115	575
50A	3	10	2	350	700
50A	4	10	1	130	130
50A	5	6.3	3	135	405
50A	6	10	2	485	970
50A	7	8	2	300	600
60B	8	5	82	63	5166
V3					
60B	1	5	2	270	540
50A	2	8	2	280	560
60B	3	5	15	83	1245
V4					
50A	1	8	3	155	465
50A	2	8	2	320	640
50A	3	6.3	3	160	480
50A	4	8	2	300	600
50A	5	8	2	285	570
60B	6	5	15	83	1245
60B	7	5	29	63	1827
V5					
60B	1	5	2	280	560
50A	2	8	4	115	460
50A	3	10	2	340	680
50A	4	6.3	3	145	435
50A	5	8	2	780	1560
60B	6	5	82	63	5166
V6					
60B	1	5	2	225	450
50A	2	8	2	280	560
50A	3	8	2	495	990
60B	4	5	47	63	2961
V7					
50A	1	6.3	2	650	1300
50A	2	8	2	340	680
50A	3	8	2	290	580
60B	4	5	61	63	3843
V8					
60B	1	5	2	225	450
50A	2	10	4	155	620
50A	3	12.5	2	80	160
50A	4	8	2	355	710
60B	5	5	33	63	2079
V9					
50A	1	10	3	225	675
50A	2	10	2	350	700
50A	3	6.3	2	170	340
50A	4	12.5	2	80	160
50A	5	8	2	645	1290
60B	6	5	62	63	3906
V10					
50A	1	6.3	2	195	390
50A	2	8	2	355	710
50A	3	6.3	2	175	350
50A	4	8	2	340	680
50A	5	8	2	290	580
60B	6	5	61	63	3843

RESUMO DE AÇO			
AÇO	BIT	COMPR	PESO
		m	kgf
60B	5	373	57
50A	6.3	49	12
50A	8	127	50
50A	10	70	43
50A	12.5	3	3
Peso Total	60B =		57 kgf
Peso Total	50A =		108 kgf

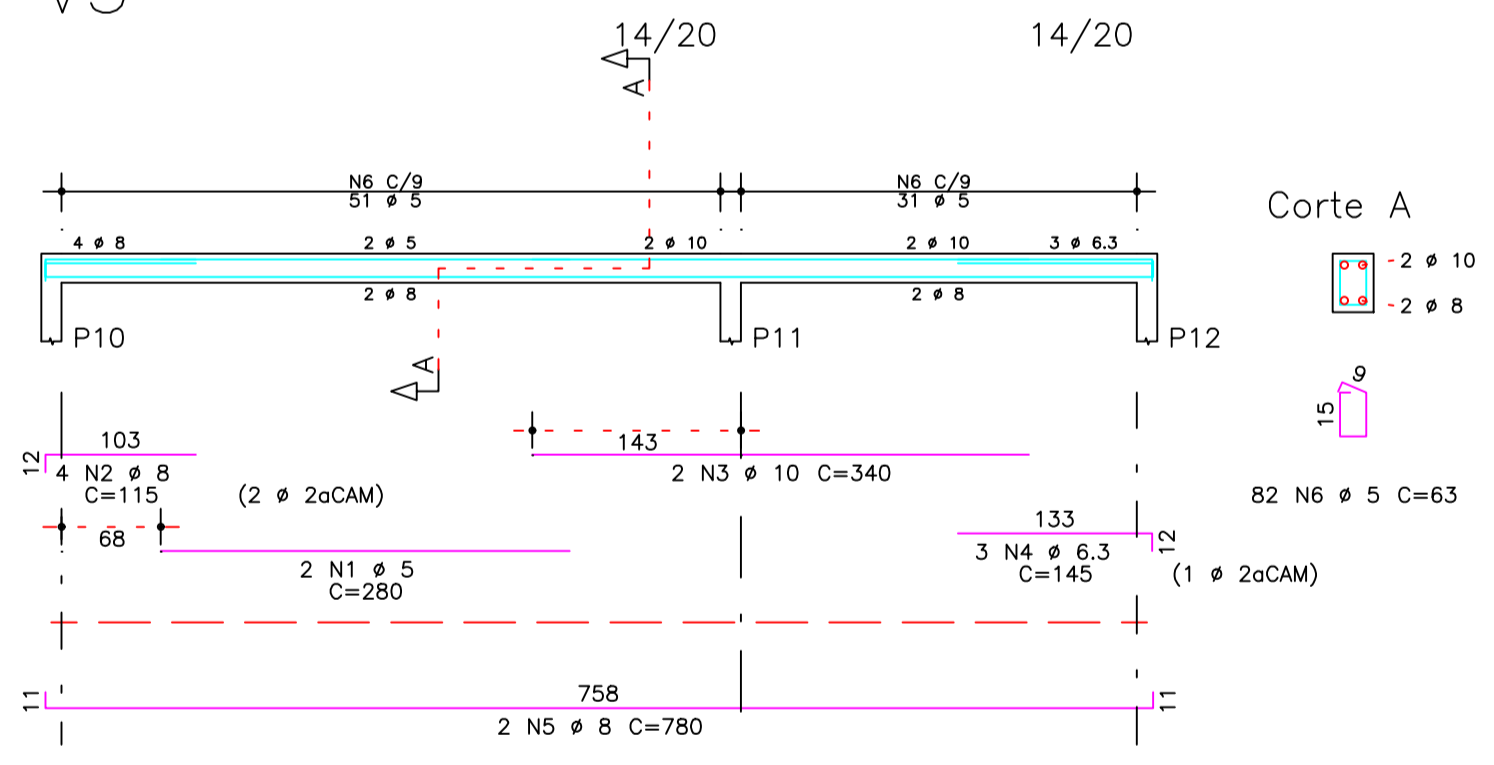
V2



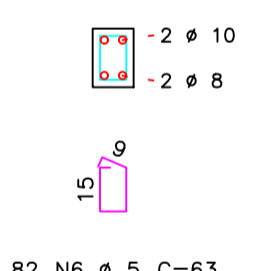
Corte A



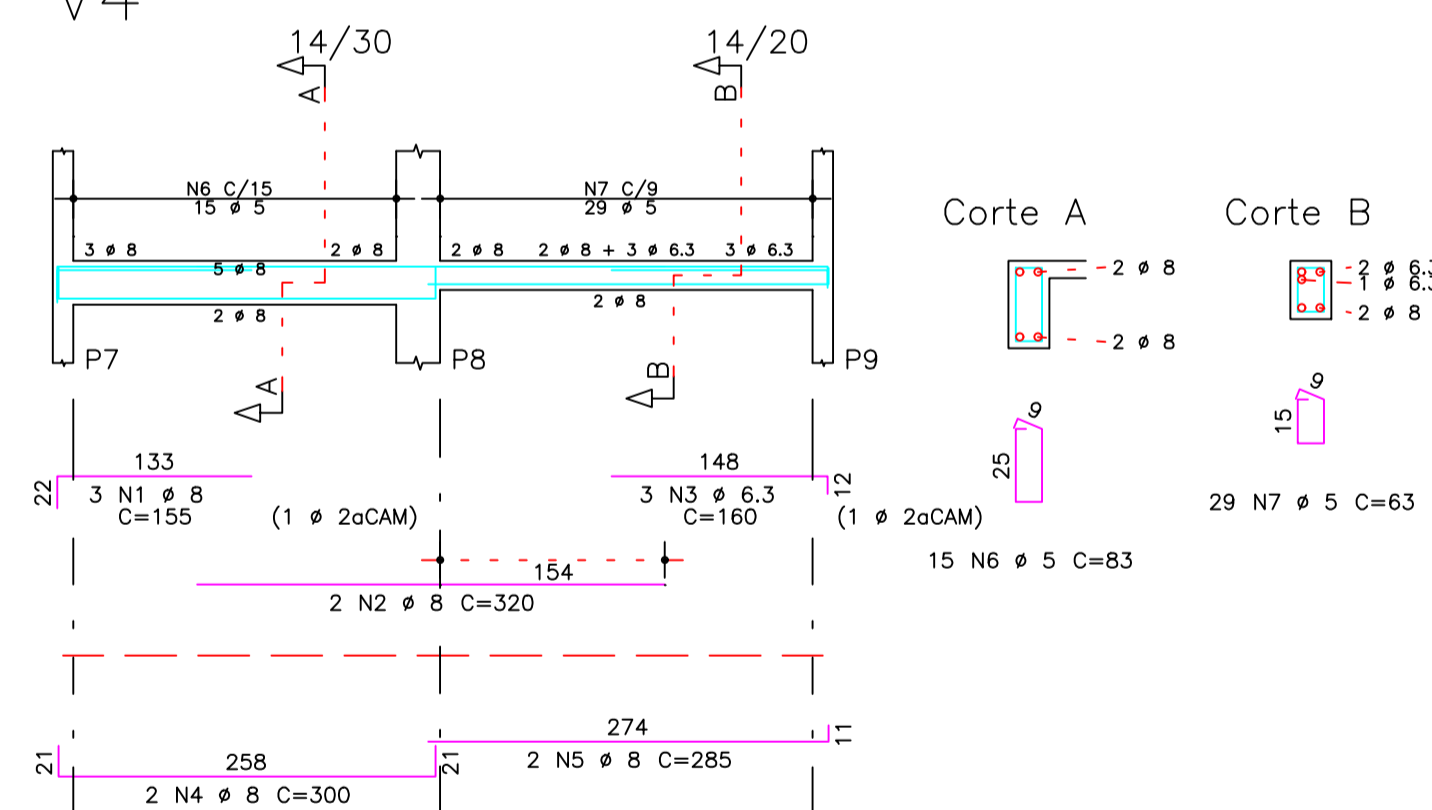
V5



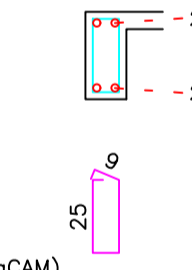
Corte A



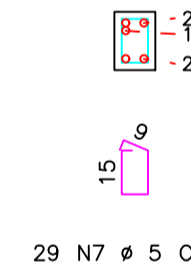
V4



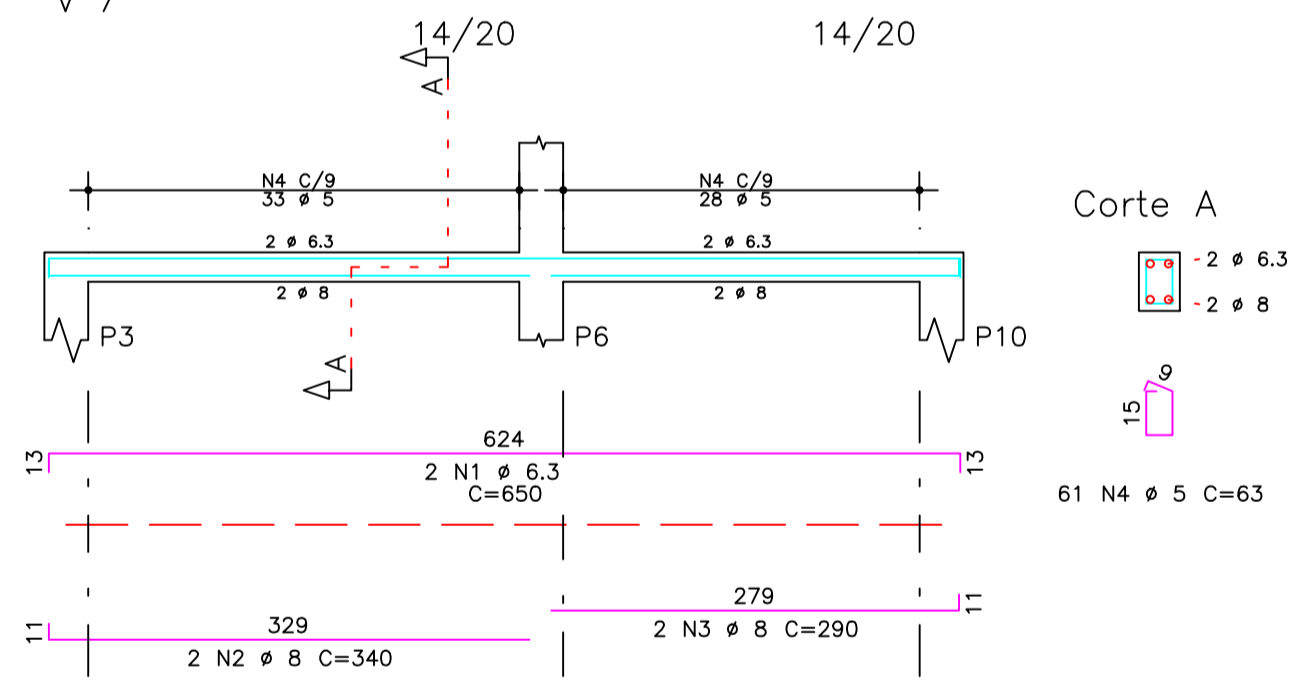
Corte A



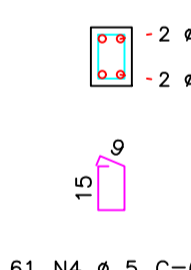
Corte B



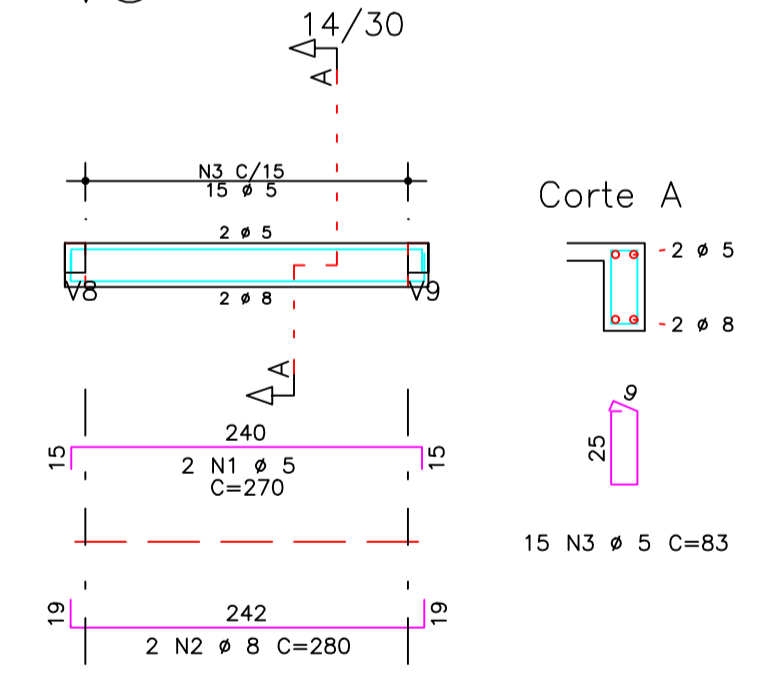
V7



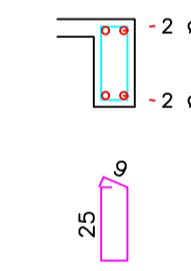
Corte A



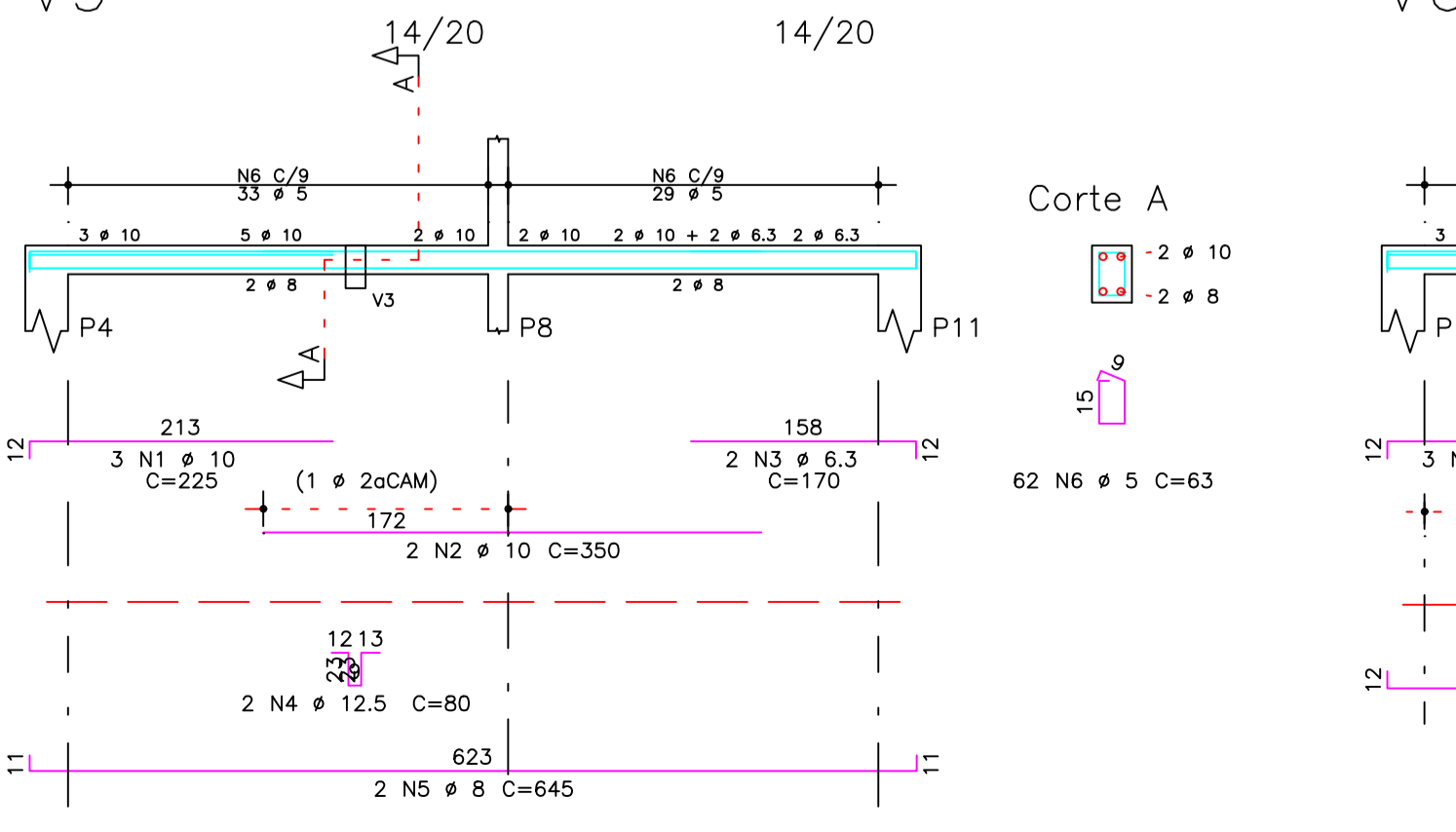
V3



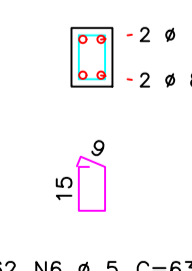
Corte A



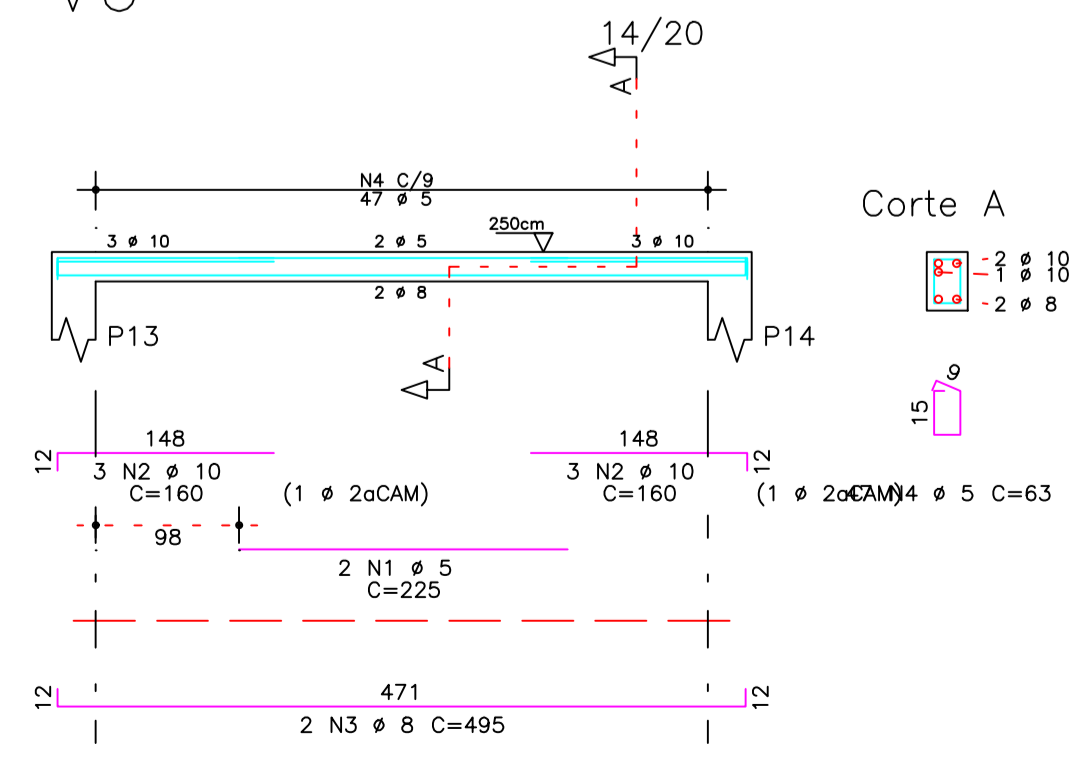
V9



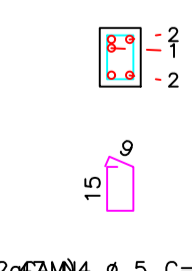
Corte A



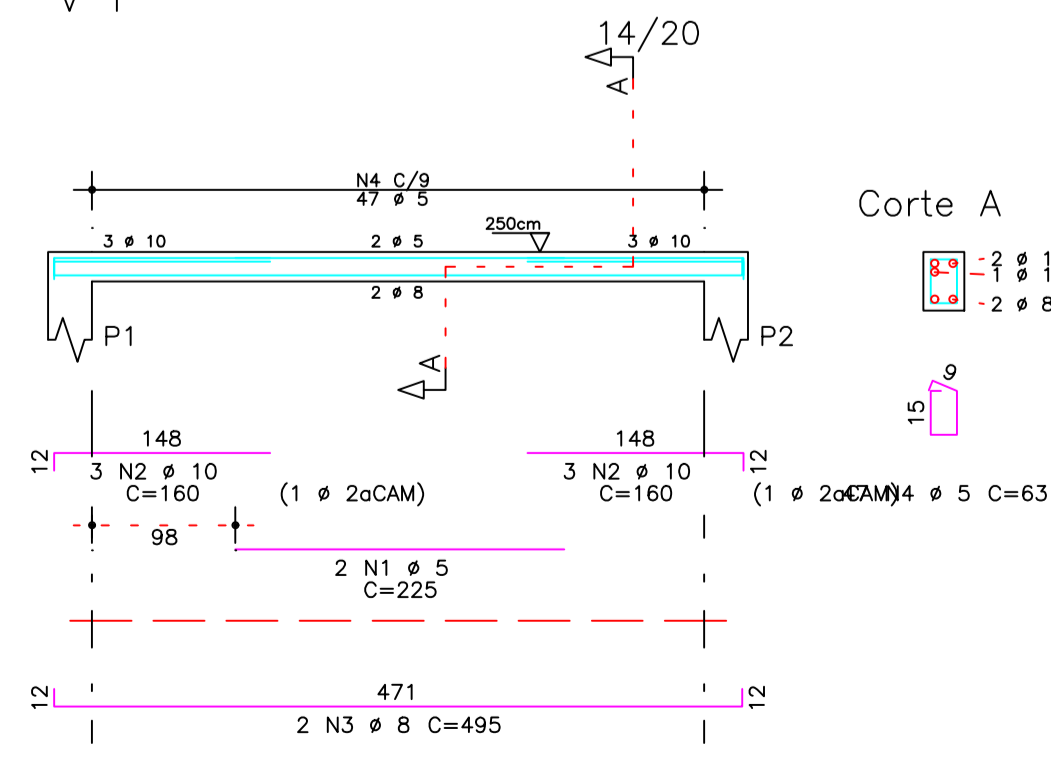
V6



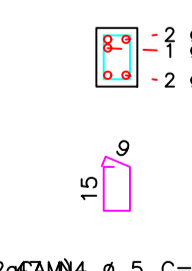
Corte A



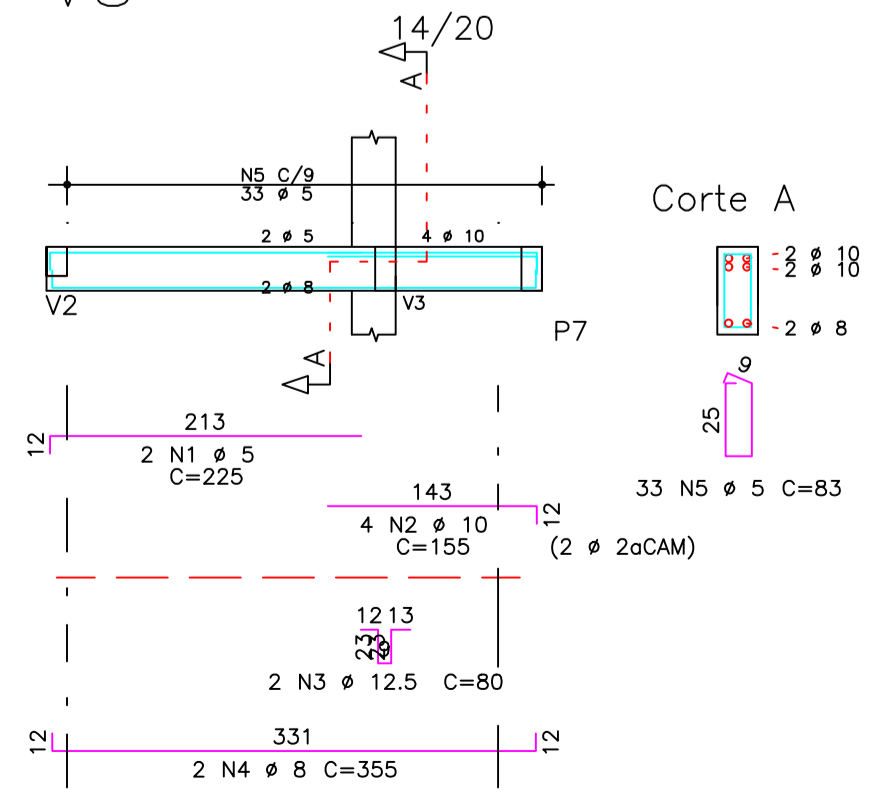
V1



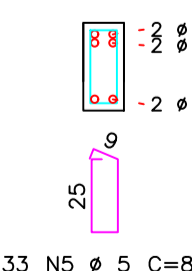
Corte A



V8



Corte A



LAJE – Armadura negativa vertical  
V1 / V2 / V3 / V4 / V5  
V6 / V7 / V8 / V9 / V10

**ESTRUTURAL**

CLIENTE: PREFEITURA MUNICIPAL DE CANAPLIS  
 CNPJ: 13.812.144/0001-94  
 ENDEREÇO: SEDE  
 CIDADE: CANAPOLIS  
 ESTADO: BAHIA

OBRA: PÚBLICO  
 Térreo: 48,20M²  
 Varanda: 14,40M²  
 Área Total: 62,20M²

CONTEÚDO: **VIGAS SUPERIORES E LAJE**

ESCALA: **1:25**

REVISÃO: **0/0**

RESPONSÁVEL TÉCNICO: **Antônio Ribeiro Teixeira**  
 Eng. Civil - CREA-BA 42370/D

DATA: **15/08/2025**

PROJETO: **414**

e-mail: [contato@arprojetos.com.br](mailto:contato@arprojetos.com.br)