

RELAÇÃO DO AÇO

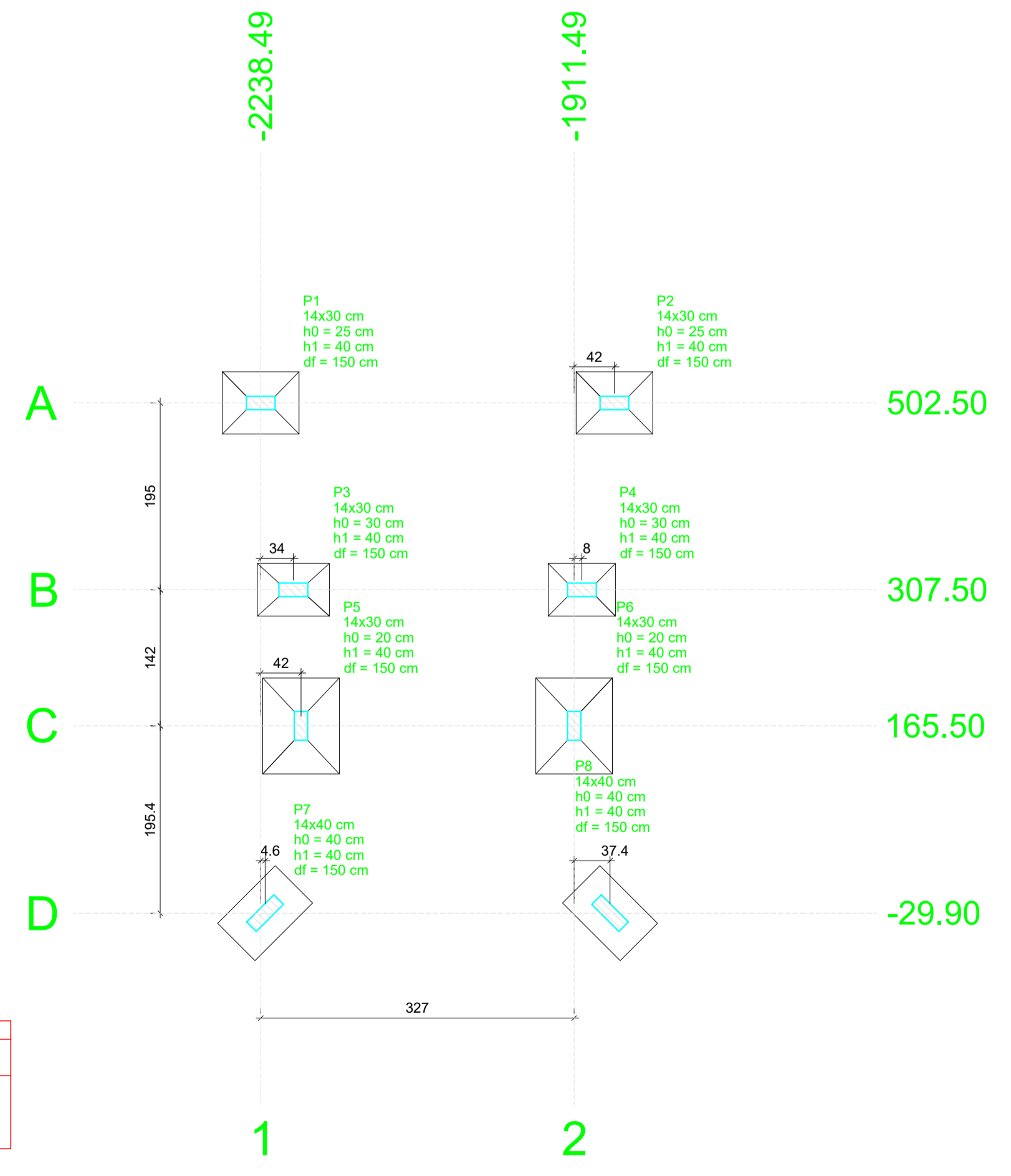
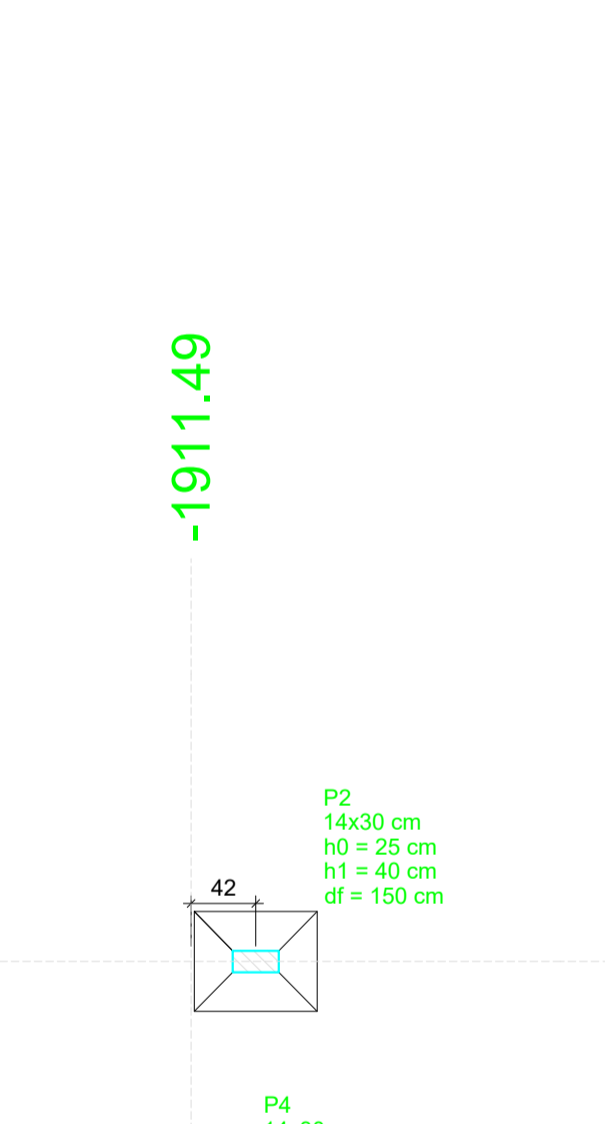
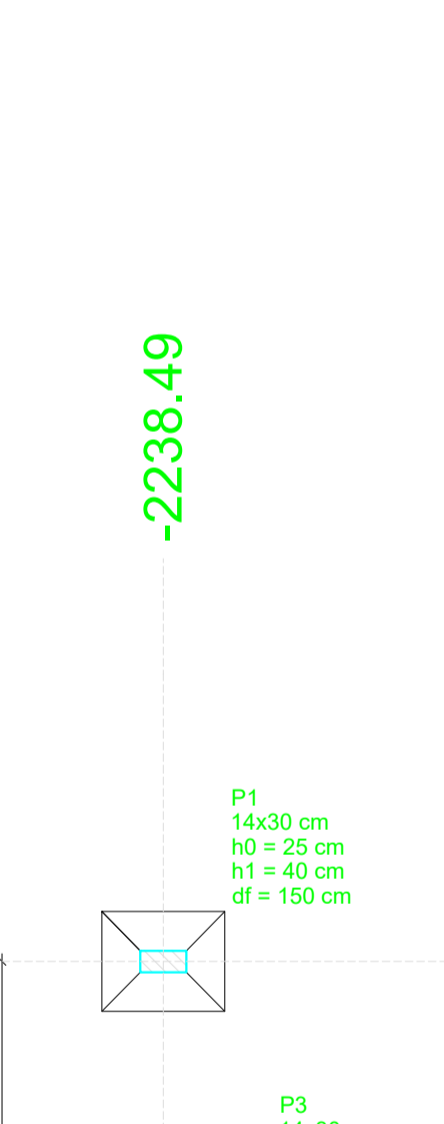
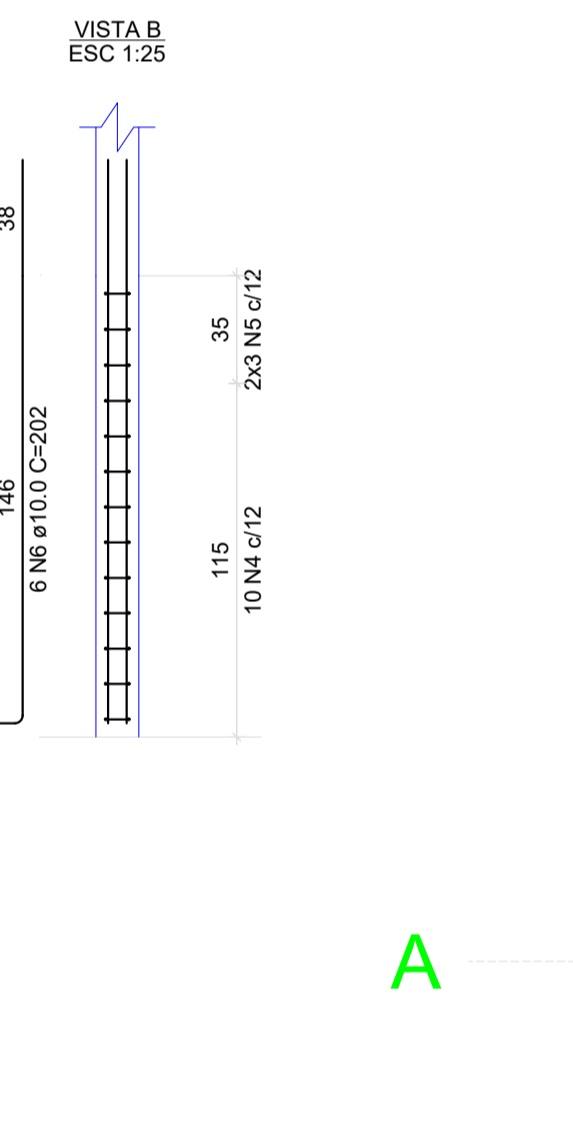
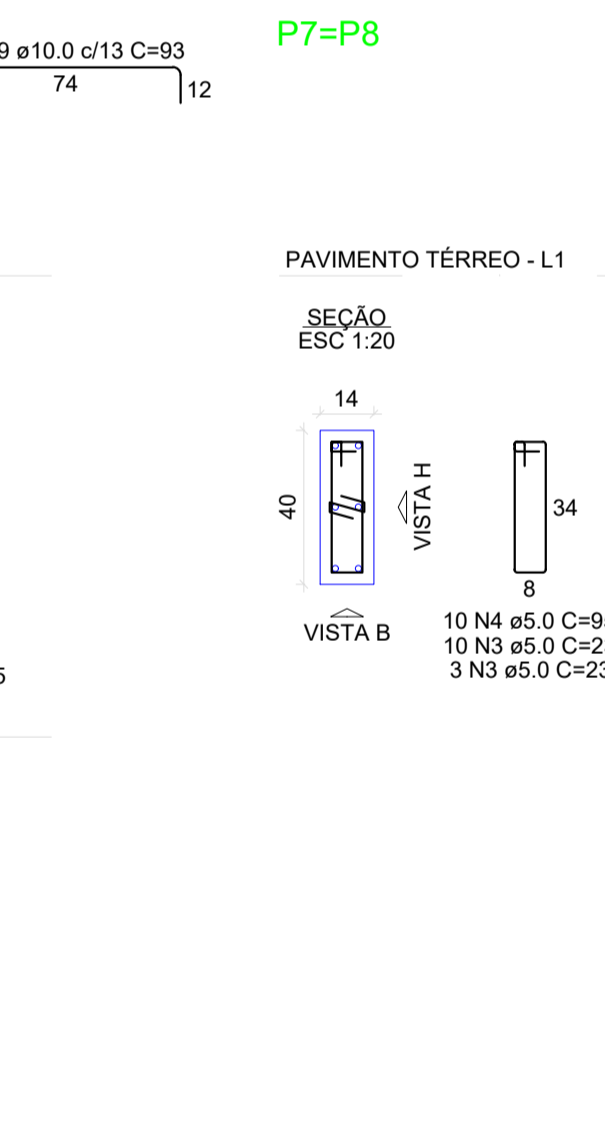
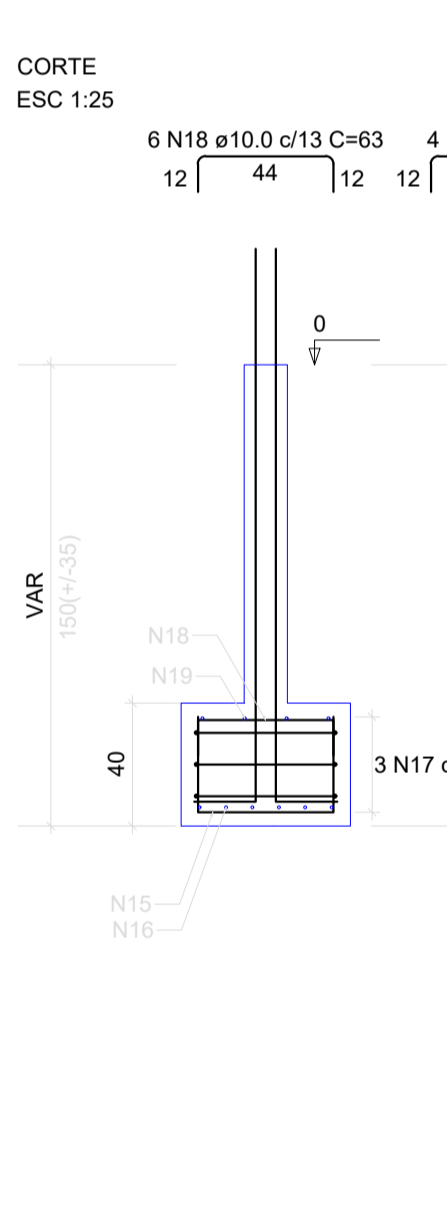
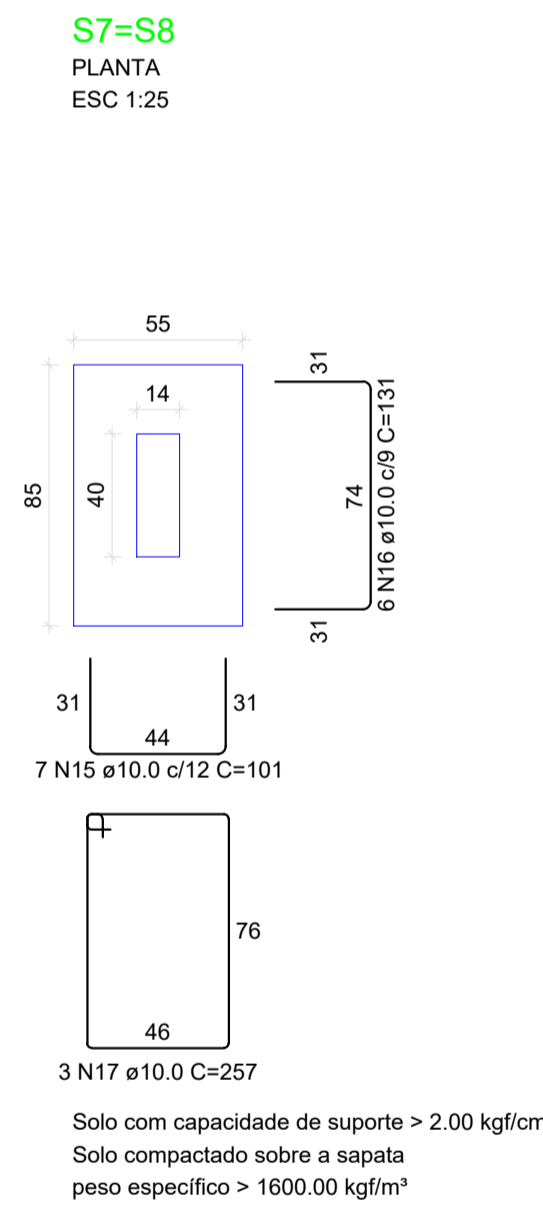
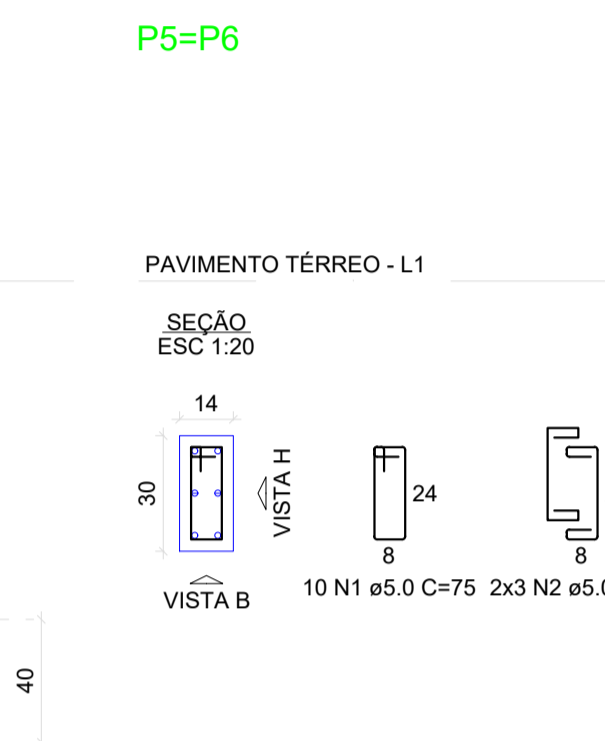
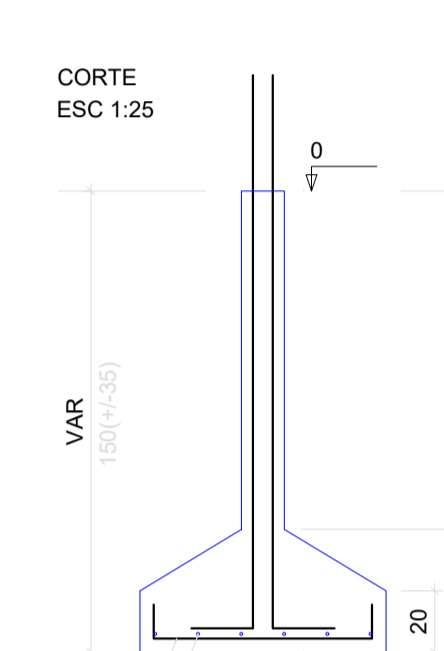
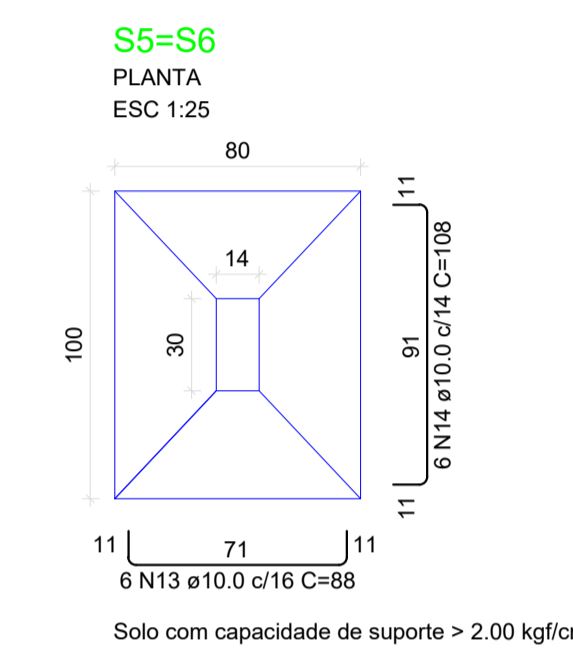
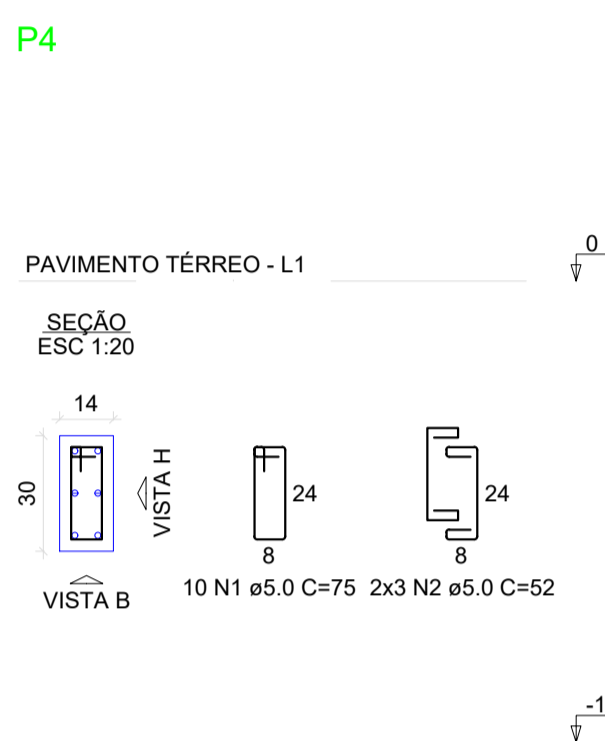
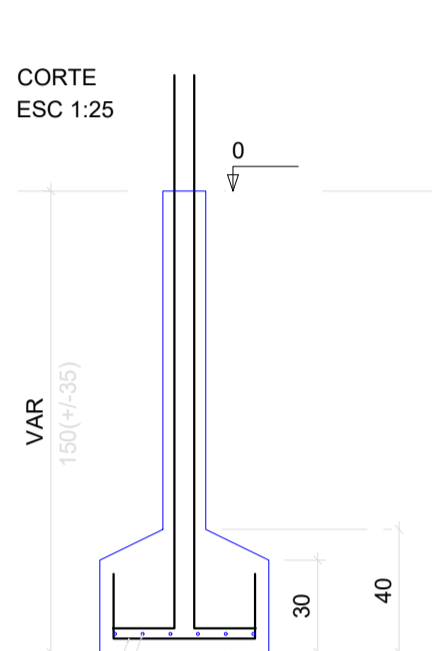
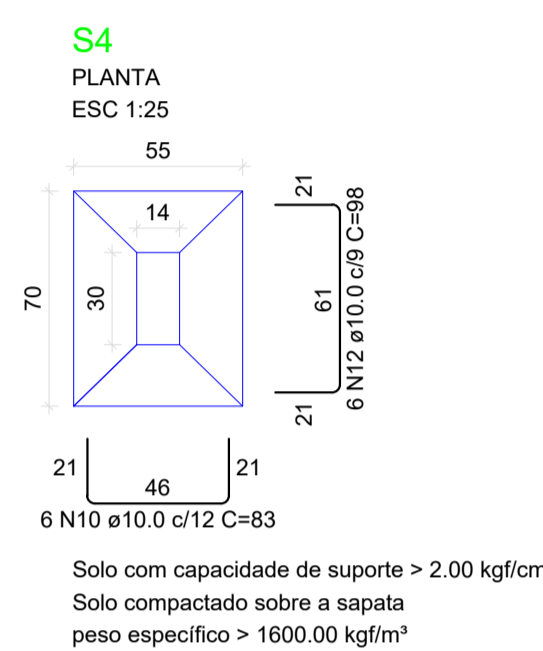
AÇO	N	DIAM (mm)	QUANT	C.UNIT (cm)	C.TOTAL (cm)
CA60	1	5.0	60	75	4500
	2	5.0	36	52	1872
	3	5.0	26	23	598
	4	5.0	20	95	1900
	5	5.0	12	62	744
CA50	6	10.0	36	202	7272
	7	10.0	8	75	600
	8	10.0	12	83	996
	9	10.0	12	98	1176
	10	10.0	12	83	996
	11	10.0	6	103	618
	12	10.0	6	98	588
	13	10.0	12	88	1056
	14	10.0	12	108	1296
	15	10.0	14	101	1414
	16	10.0	12	131	1572
	17	10.0	6	257	1542
	18	10.0	12	63	756
	19	10.0	8	93	744

RESUMO DO AÇO

AÇO	DIAM (mm)	C.TOTAL (m)	PESO + 10% (kg)
CA50	10.0	206.3	139.9
CA60	5.0	96.1	16.3

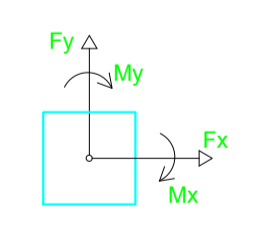
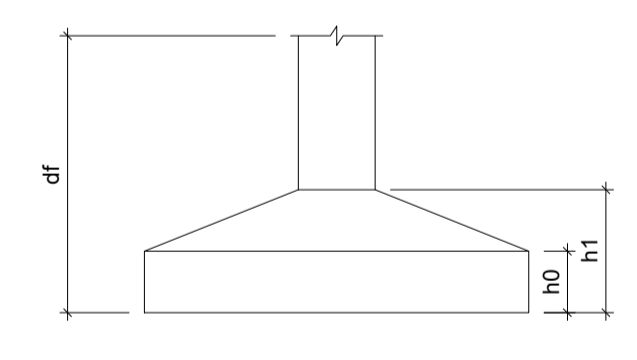
PESO TOTAL (kg)  
CA50 139.9  
CA60 16.3

Volume de concreto (C-25) = 1.84 m<sup>3</sup>  
Área de forma = 14.84 m<sup>2</sup>



Nome	Seção (cm)	X (cm)	Y (cm)	Carga Máx. (tf)	Carga Min. (tf)	Pilar				Fundação				Lado B (cm)	Lado H (cm)	h1 / ha (cm)	h1 / hb (cm)	df (cm)
						Mx Máximo (kgf.m)	My Máximo (kgf.m)	Fx Máximo (tf)	Fy Máximo (tf)	Positivo	Negativo	Positivo	Negativo					
P1	14x30	-2238.49	502.50	6.0	5.4	100	-200	100	-400	0.0	-0.5	0.2	0.0	65	80	25	40	150
P2	14x30	-1869.49	502.50	6.0	5.4	100	-200	300	0	0.4	-0.0	0.2	0.0	65	80	25	40	150
P3	14x30	-2204.48	307.50	3.8	2.9	100	-100	200	-400	0.0	-0.3	0.2	0.0	55	75	30	40	150
P4	14x30	-1903.49	307.50	3.8	2.9	100	-100	300	-100	0.4	0.0	0.2	0.0	55	70	30	40	150
P5	14x30	-2196.49	165.50	12.7	10.7	200	-400	0	-100	0.0	-0.3	0.4	-0.2	80	100	20	40	150
P6	14x30	-1911.49	165.50	12.7	10.7	200	-400	200	0	0.2	0.0	0.4	-0.2	80	100	20	40	150
P7	14x40	-2233.89	-29.90	1.9	1.6	300	0	100	-300	0.0	-0.6	0.0	-0.5	55	85	40	40	150
P8	14x40	-1874.08	-29.90	1.9	1.6	300	0	400	0	0.5	0.0	0.0	-0.5	55	85	40	40	150

Localção no eixo X		Localção no eixo Y	
Coordenadas (cm)	Nome	Coordenadas (cm)	Nome
-2238.49	P1	502.50	P1, P2
-2233.89	P7	307.50	P3, P4
-2204.48	P3	165.50	P5, P6
-2196.49	P5	-29.90	P7, P8
-1911.49	P6		
-1903.49	P4		
-1874.08	P8		
-1869.49	P2		



CIDADE: CANÁPOLIS - BA

ENDEREÇO DA OBRA: PRAÇA DO ESTÁDIO DE FUTEBOL

PROPRIETÁRIO: PREFEITURA MUNICIPAL DE CANÁPOLIS

CNPJ: 13.812.144/0001-94

RESPONSÁVEL TÉCNICO:

Proprietário: PREFEITURA MUNICIPAL DE CANÁPOLIS

Execução:

Res. Técnico:

**ESTRUTURAL**

TÍTULO: PRAÇA

CONTEÚDO: LOCAÇÃO E ARMADURA DAS SAPATAS

FOLHA: 01/06

ART PROJETO

TELEFONE: (77) 99125-0252

ESCALA: IND.

TIPO DE REQUERIMENTO: OBRA INICIAL

DESENHO: Maurício

DATA: FEV. 2026