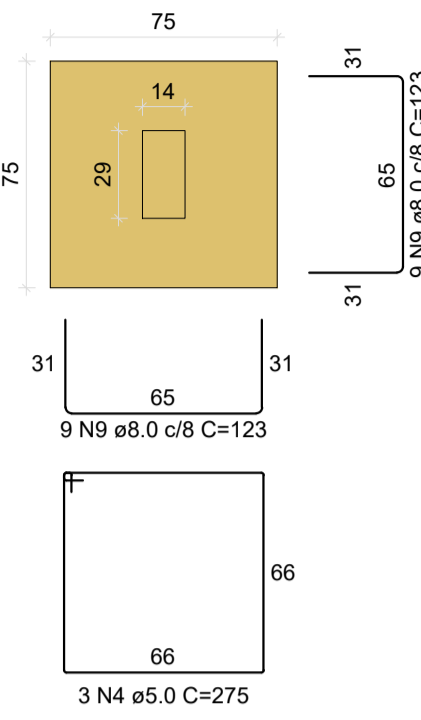
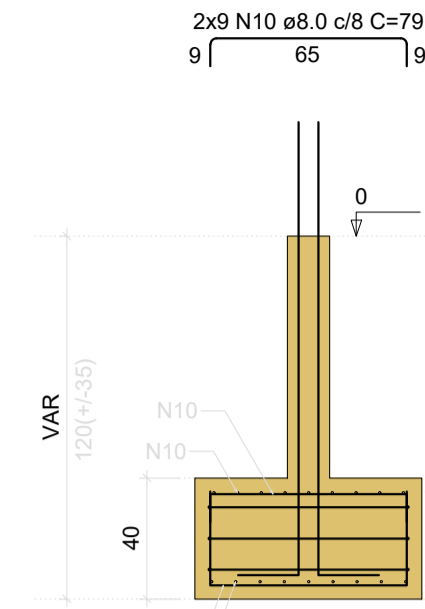


S10
PLANTA
ESC 1:25



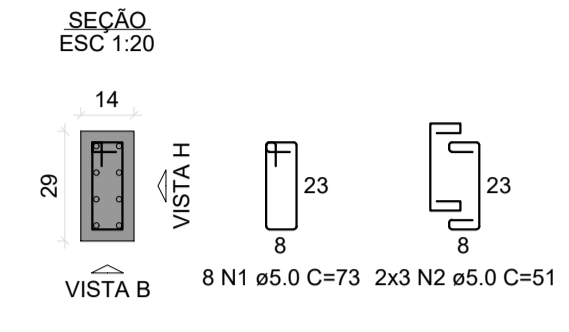
Solo com capacidade de suporte > 2.50 kgf/cm²
Solo compactado sobre a sapata
peso específico > 1600.00 kgf/m³

CORTE
ESC 1:25

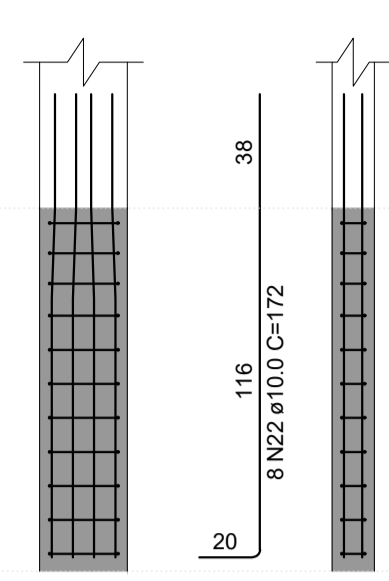


P10

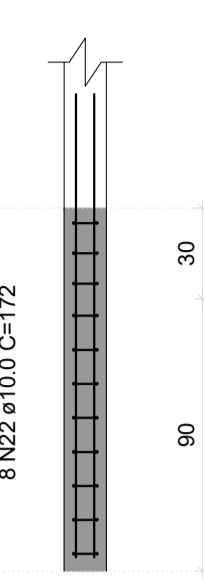
FUNDAÇÃO - L1
ESC 1:20



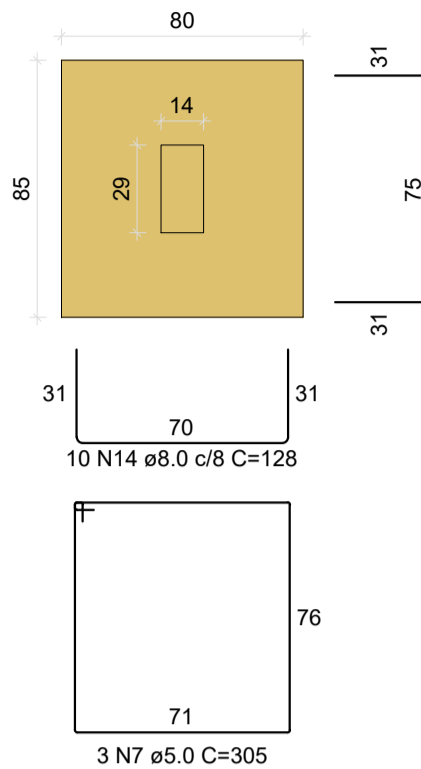
VISTA H
ESC 1:25



VISTA B
ESC 1:25

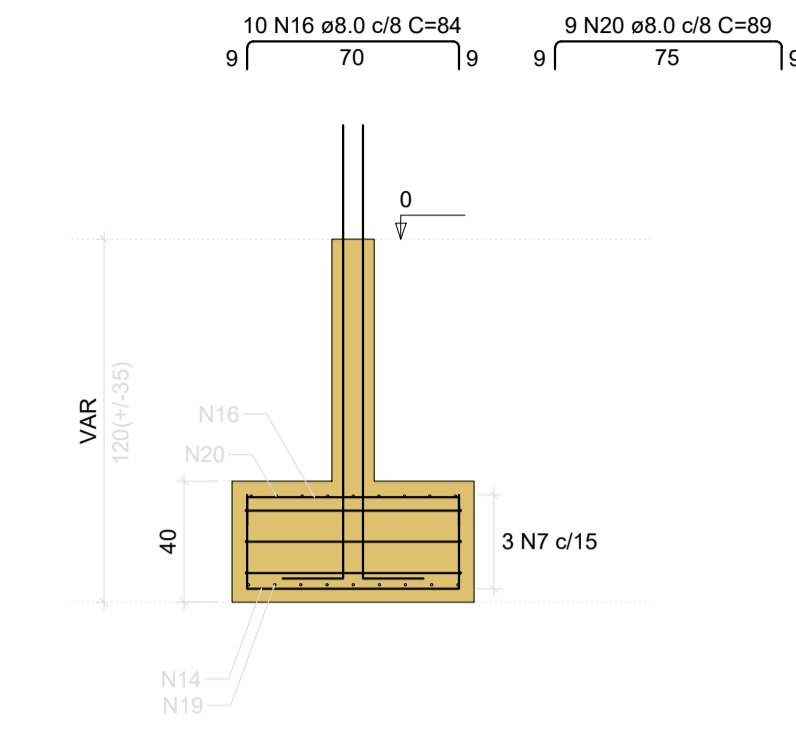


S18
PLANTA
ESC 1:25



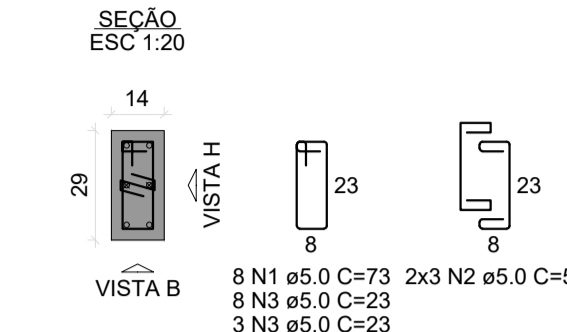
Solo com capacidade de suporte > 2.50 kgf/cm²
Solo compactado sobre a sapata
peso específico > 1600.00 kgf/m³

CORTE
ESC 1:25

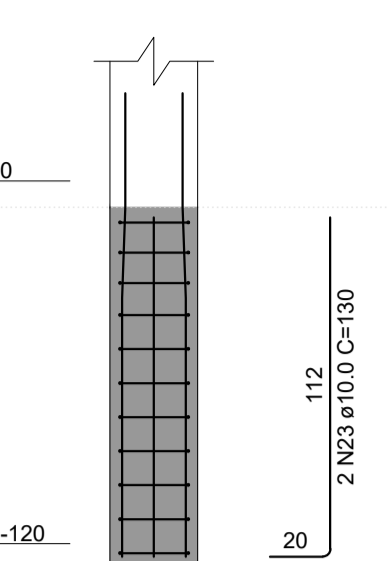


P18

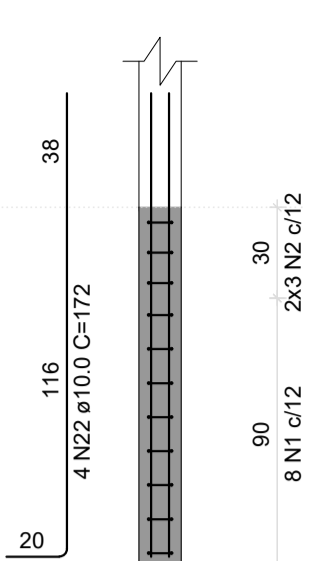
FUNDAÇÃO - L1
ESC 1:20



VISTA H
ESC 1:25



VISTA B
ESC 1:25



RELAÇÃO DO AÇO

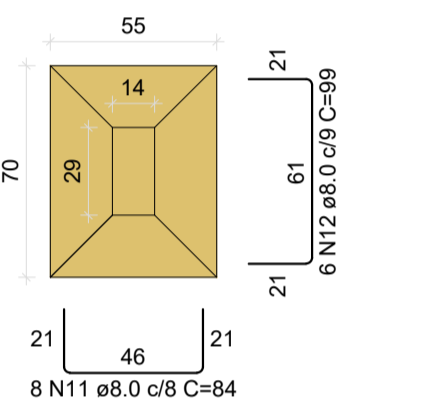
AÇO	N	DIAM (mm)	QUANT	C.UNIT (cm)	C.TOTAL (cm)
CA60	1	5.0	72	73	5256
	2	5.0	54	51	2754
	3	5.0	66	23	1518
	4	5.0	3	275	825
	5	5.0	3	275	825
	6	5.0	3	245	735
	7	5.0	3	305	915
	8	5.0	62	75	4650
	9	8.0	18	123	2214
	10	8.0	18	79	1422
CA50	11	8.0	40	84	3360
	12	8.0	30	99	2970
	13	8.0	9	118	1062
	14	8.0	18	128	2304
	15	8.0	16	74	1184
	16	8.0	18	84	1512
	17	8.0	8	113	904
	18	8.0	8	69	552
	19	8.0	9	133	1197
	20	8.0	9	89	801
	21	8.0	4	999	3996
	22	10.0	54	172	9288
	23	10.0	2	130	260
	24	10.0	6	117	702

RESUMO DO AÇO

AÇO	DIAM (mm)	C.TOTAL (m)	PESO + 10% (kg)
CA50	8.0	234.8	101.9
CA60	5.0	174.8	29.6
PESO TOTAL (kg)			
CA50		171.4	
CA60		29.6	

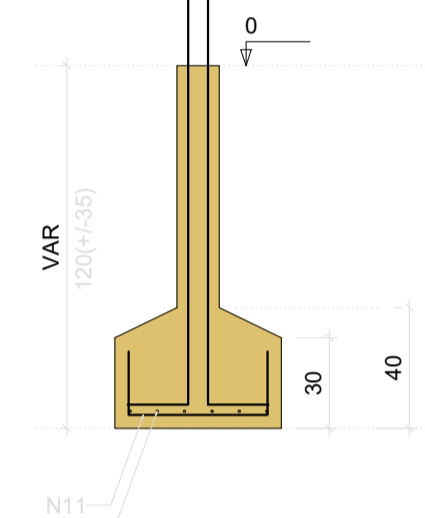
Volume de concreto (C-25) = 2.25 m³
Área de forma = 21.54 m²

S12=S13=S14=S19=S20
PLANTA
ESC 1:25



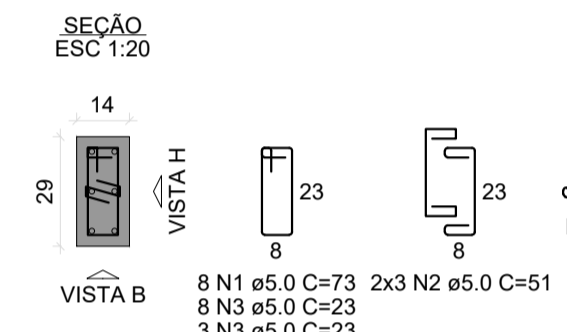
Solo com capacidade de suporte > 2.50 kgf/cm²
Solo compactado sobre a sapata
peso específico > 1600.00 kgf/m³

CORTE
ESC 1:25

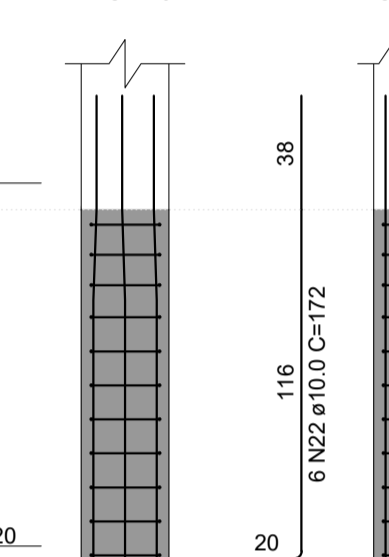


P12=P13=P14=P19

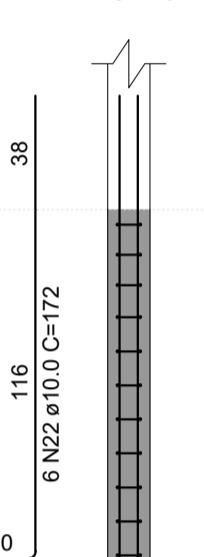
FUNDAÇÃO - L1
ESC 1:20



VISTA H
ESC 1:25

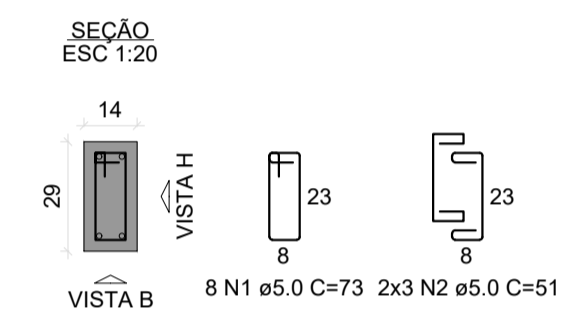


VISTA B
ESC 1:25

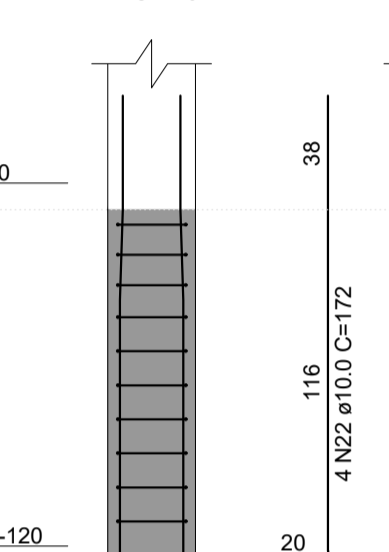


P20

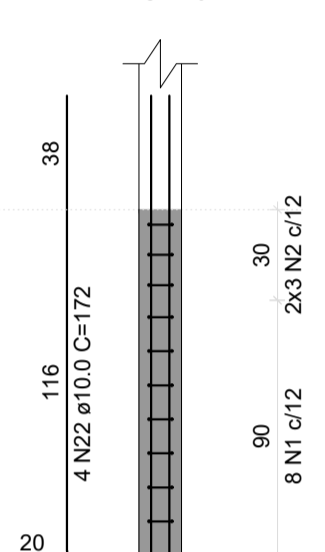
FUNDAÇÃO - L1
ESC 1:20



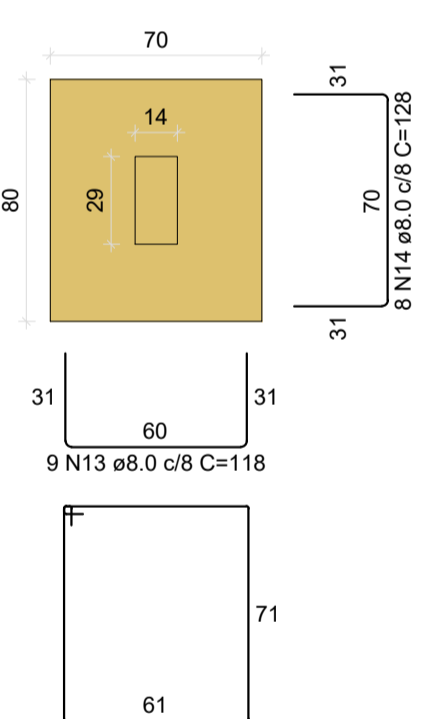
VISTA H
ESC 1:25



VISTA B
ESC 1:25

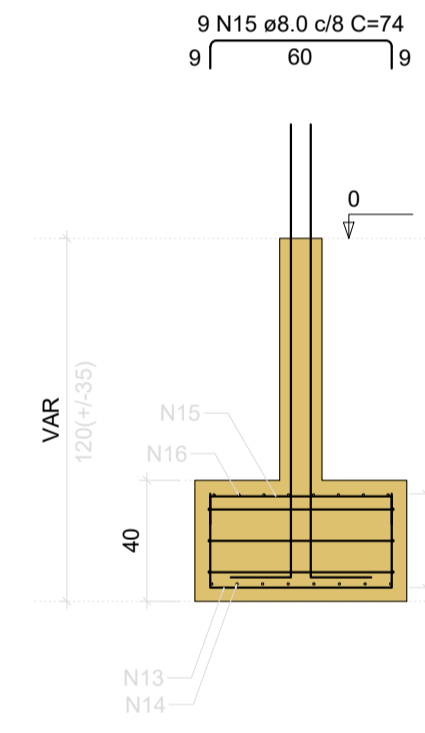


S15
PLANTA
ESC 1:25



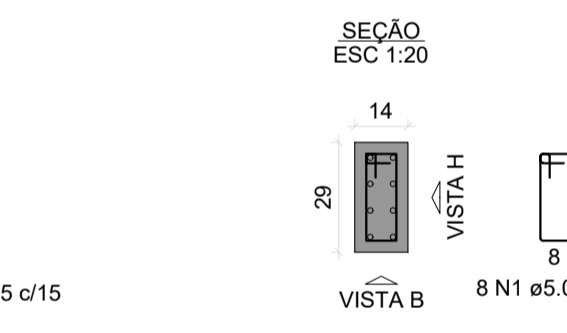
Solo com capacidade de suporte > 2.50 kgf/cm²
Solo compactado sobre a sapata
peso específico > 1600.00 kgf/m³

CORTE
ESC 1:25

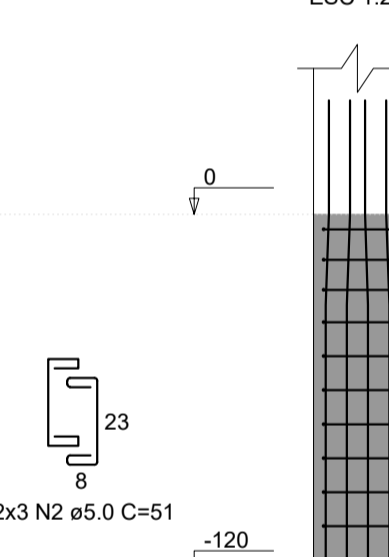


P15

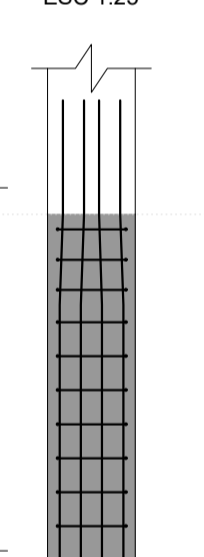
FUNDAÇÃO - L1
ESC 1:20



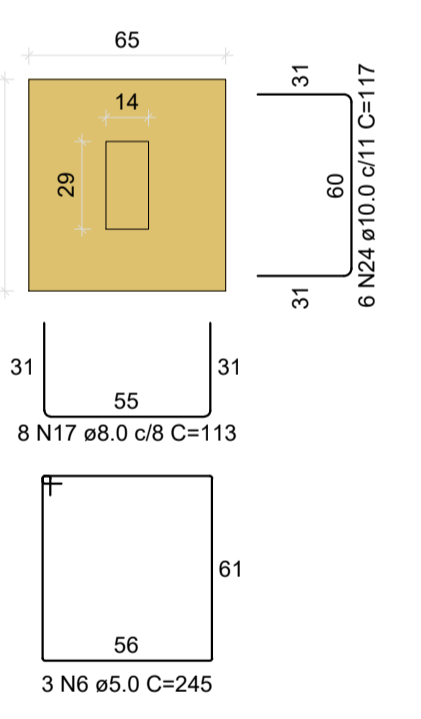
VISTA H
ESC 1:25



VISTA B
ESC 1:25

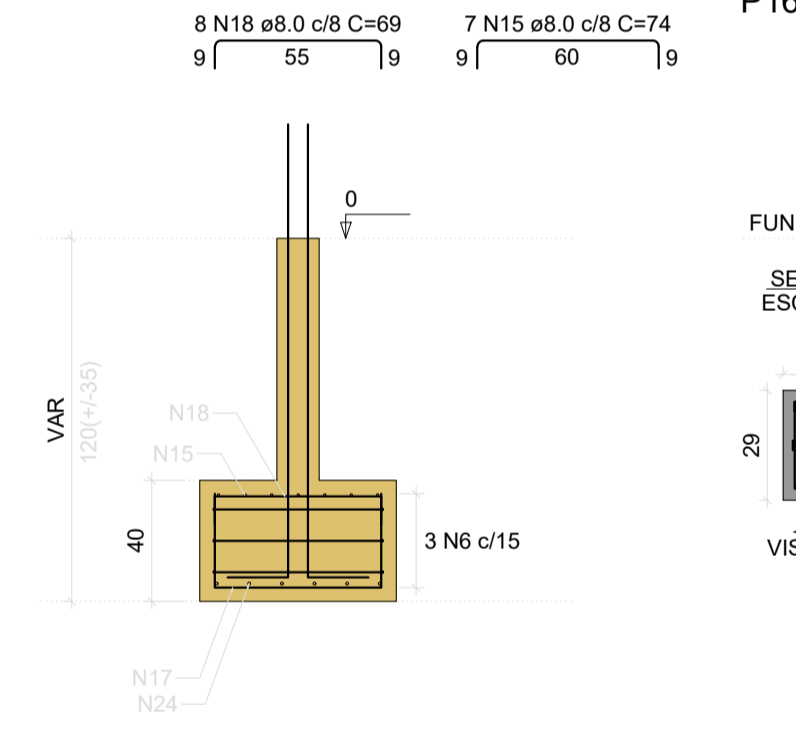


S16
PLANTA
ESC 1:25



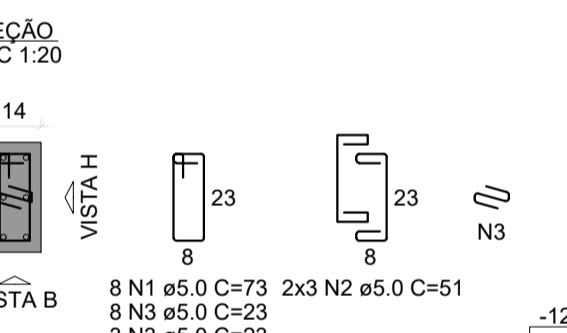
Solo com capacidade de suporte > 2.50 kgf/cm²
Solo compactado sobre a sapata
peso específico > 1600.00 kgf/m³

CORTE
ESC 1:25

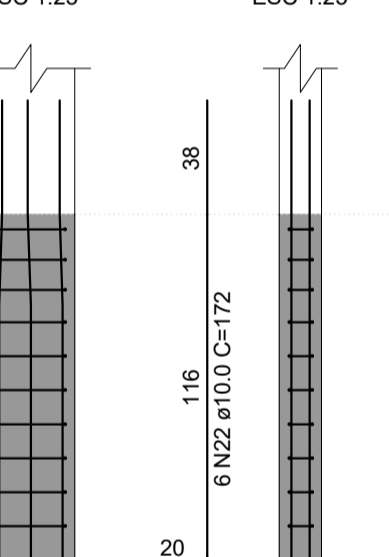


P16

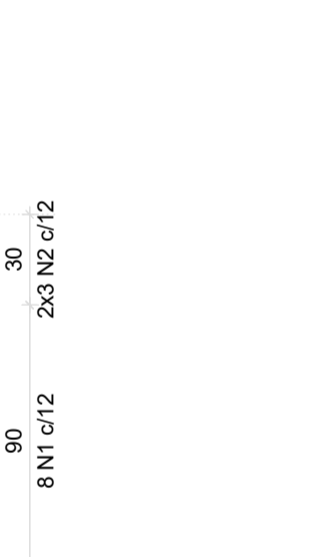
FUNDAÇÃO - L1
ESC 1:20



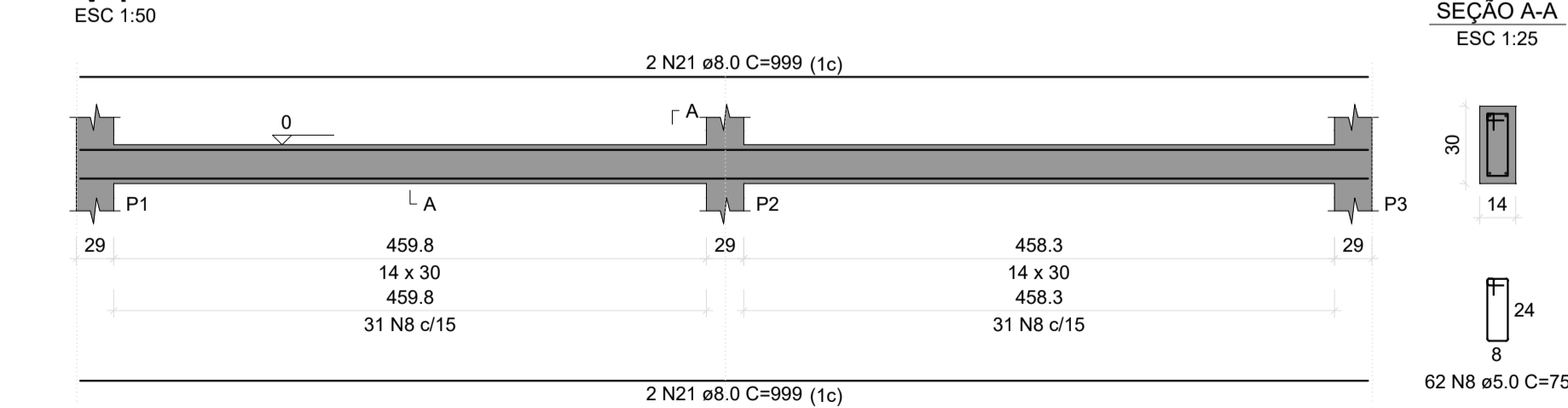
VISTA H
ESC 1:25



VISTA B
ESC 1:25



V1
ESC 1:50



PREFEITURA MUNICIPAL DE SEBASTIÃO LARANJEIRAS

PREFEITURA

PREFEITURA MUNICIPAL DE SEBASTIÃO LARANJEIRAS

GESTÃO

-

PROJETO
ESTRUTURAL

CONSTRUÇÃO DE SALAS DE AULA

ENGENHEIRO:
HENRIQUE RODRIGUES

CREA.
141978497-8

ASSINATURA

FOLHA

DATA
03/2026

PRANCHA

HENRIQUE RODRIGUES
141978497-8

04/07

ESCALA
INDICADAS

CONTEÚDO DA PRANCHA

04/07