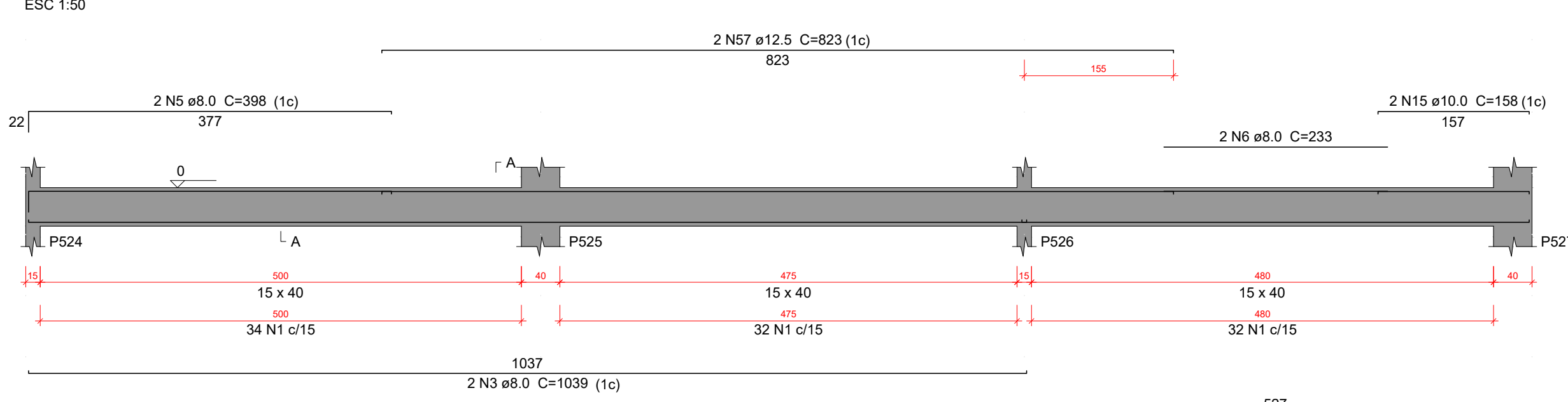
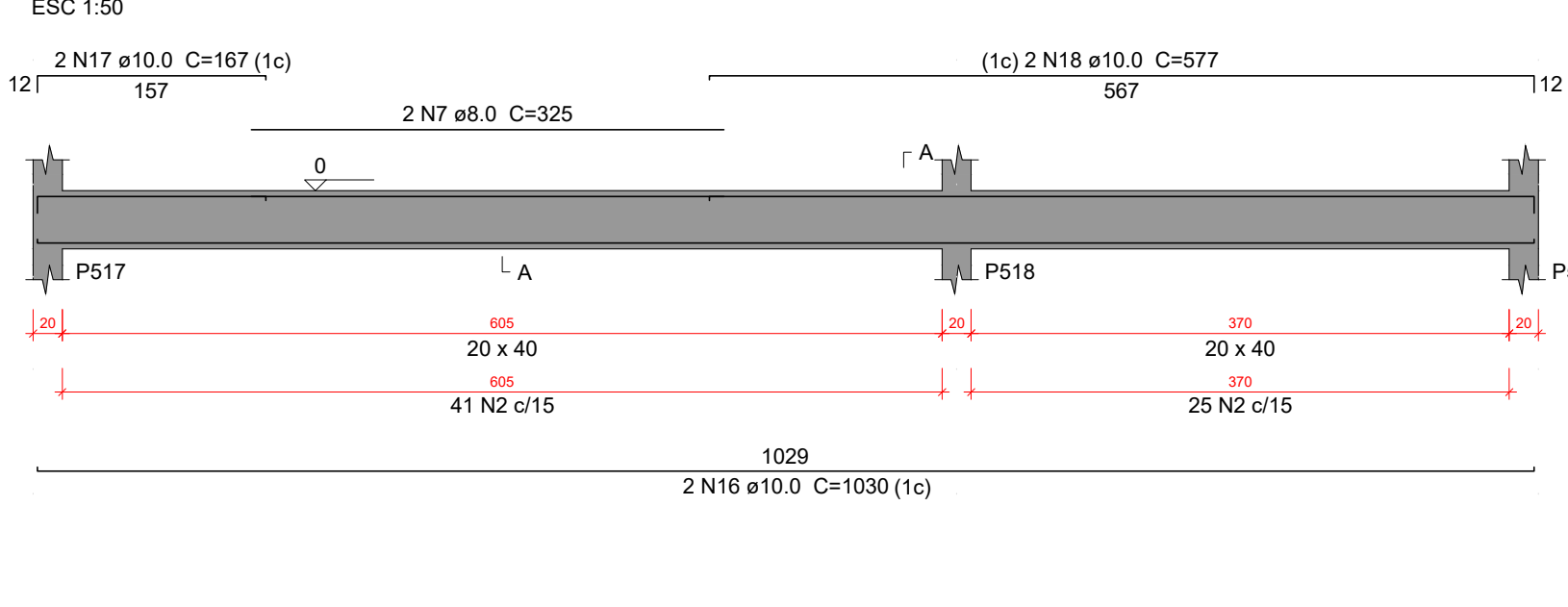


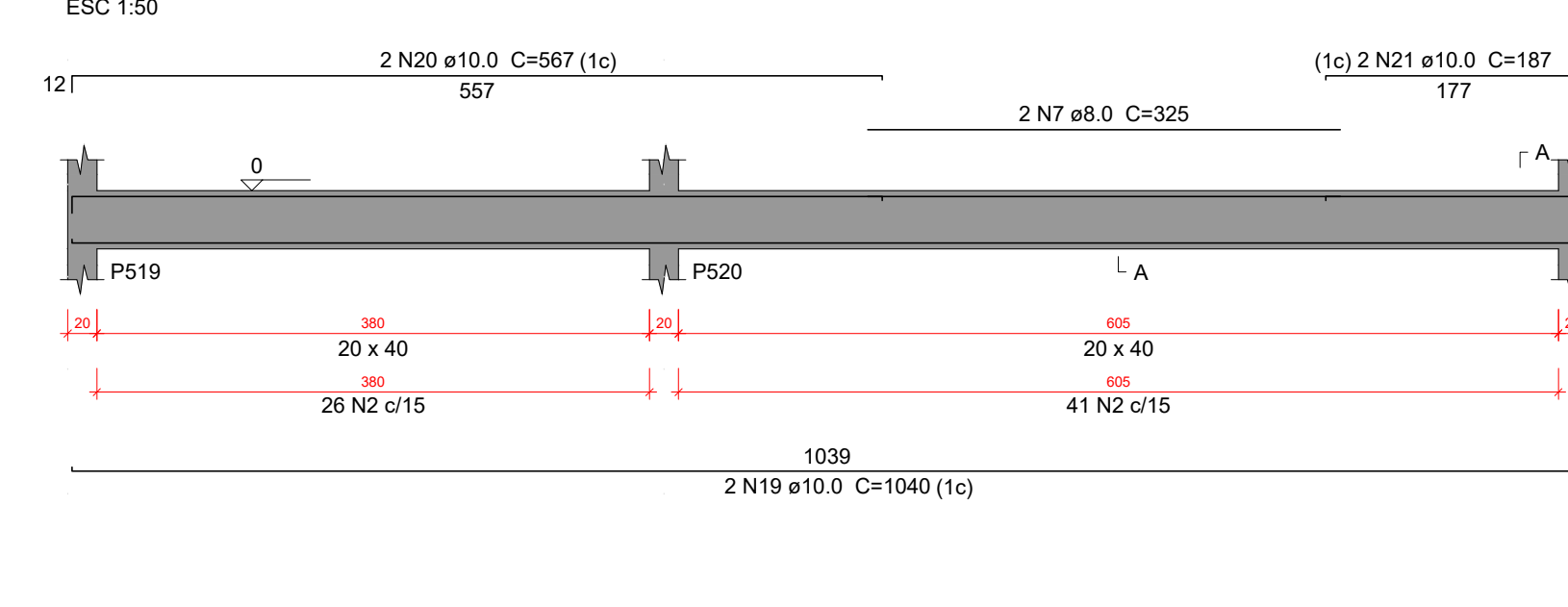
VT316



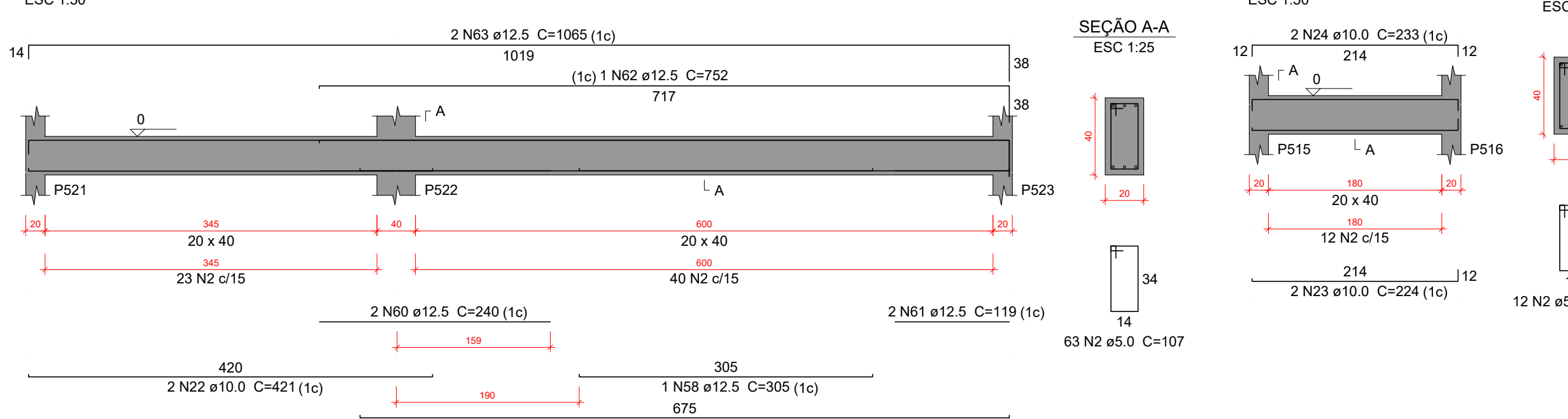
VT317



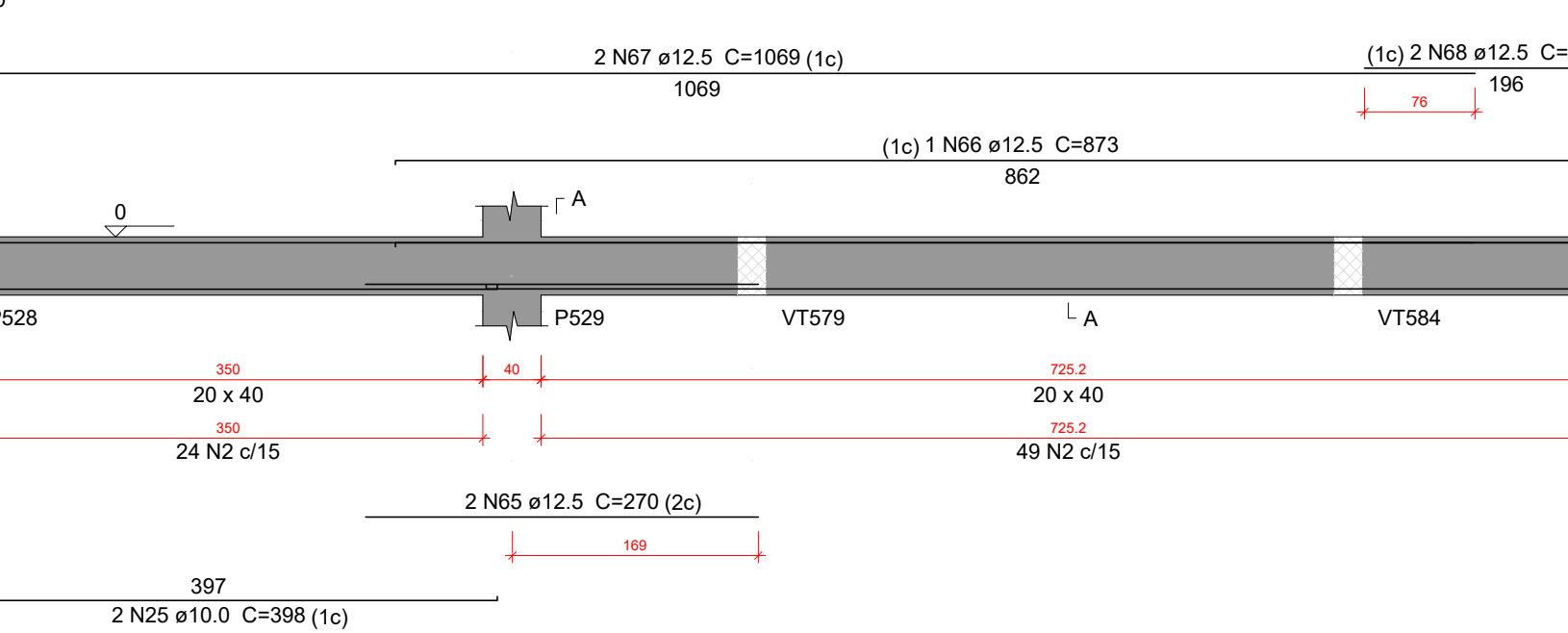
VT318



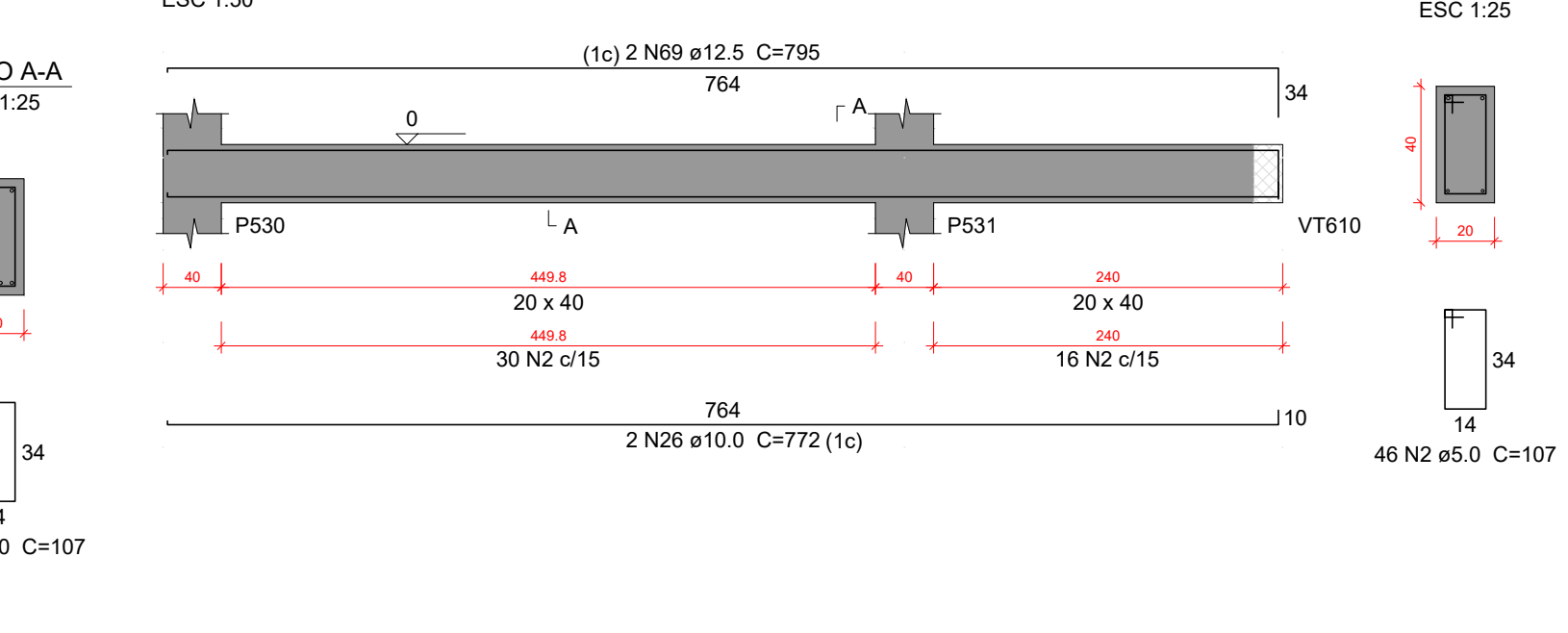
VT319



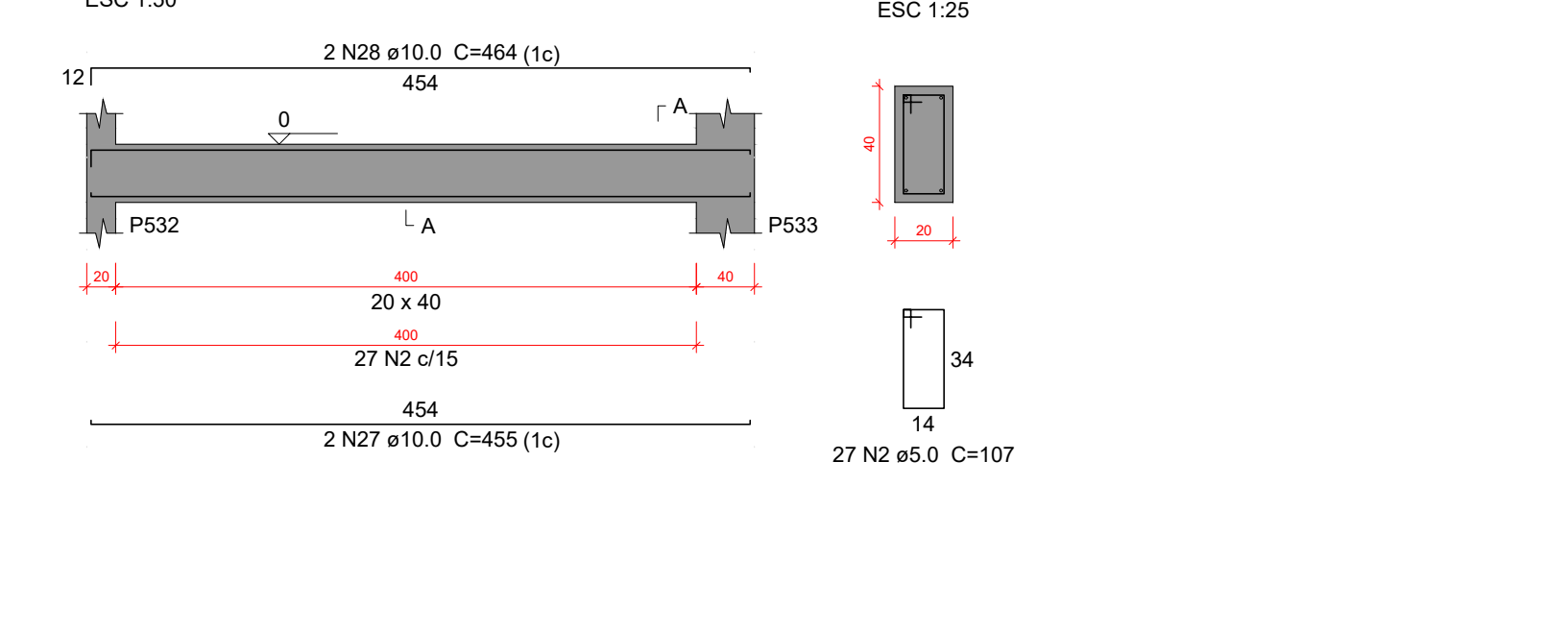
VT321



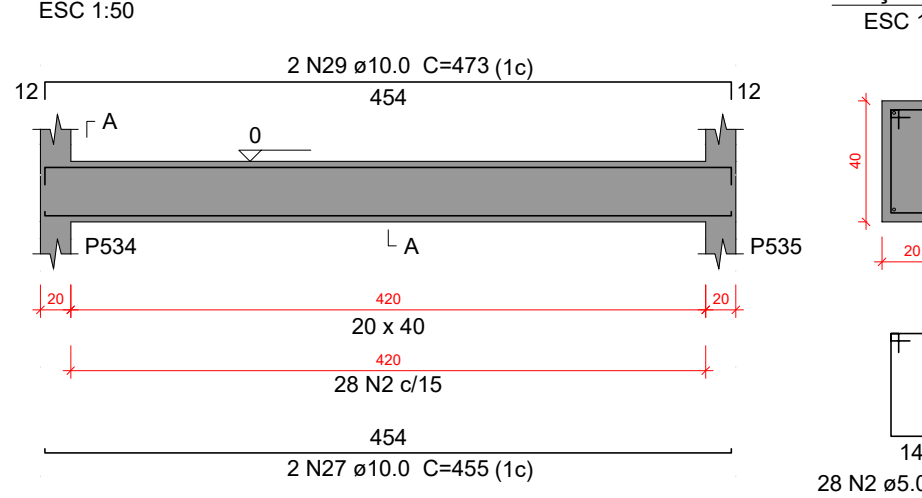
VT322



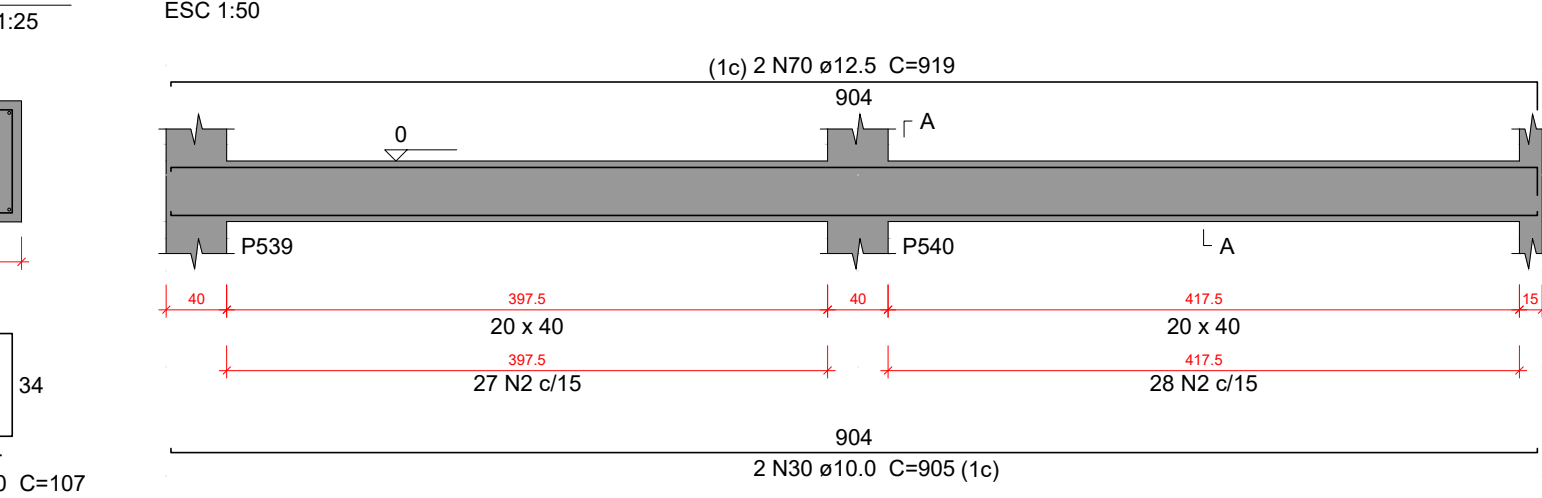
VT323



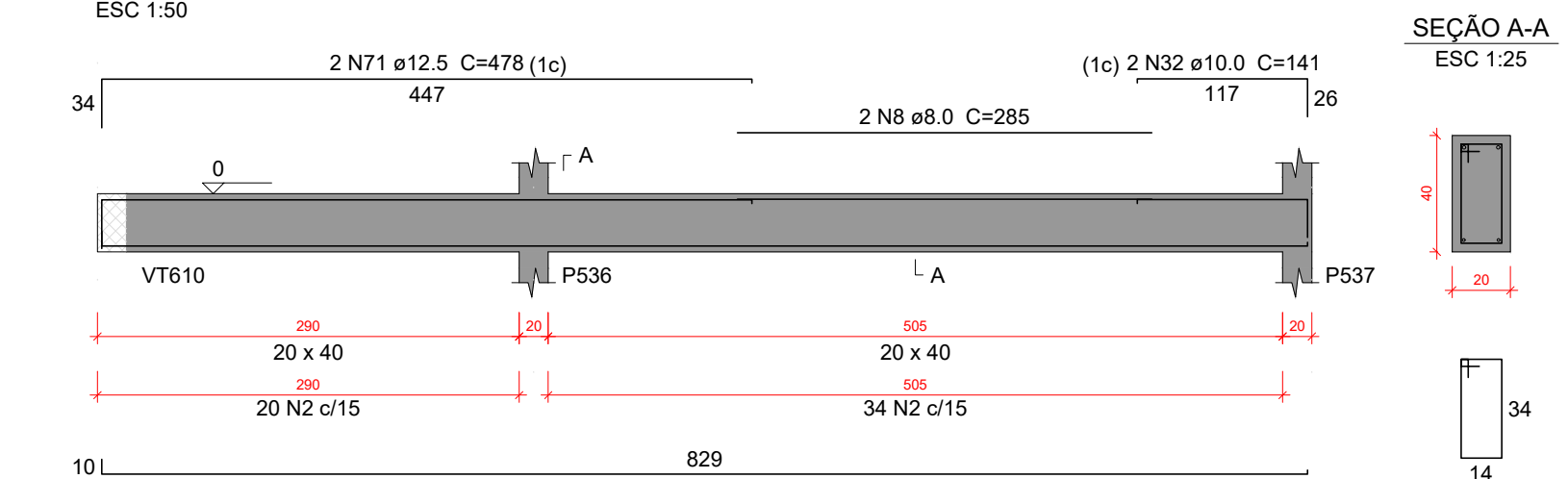
VT324



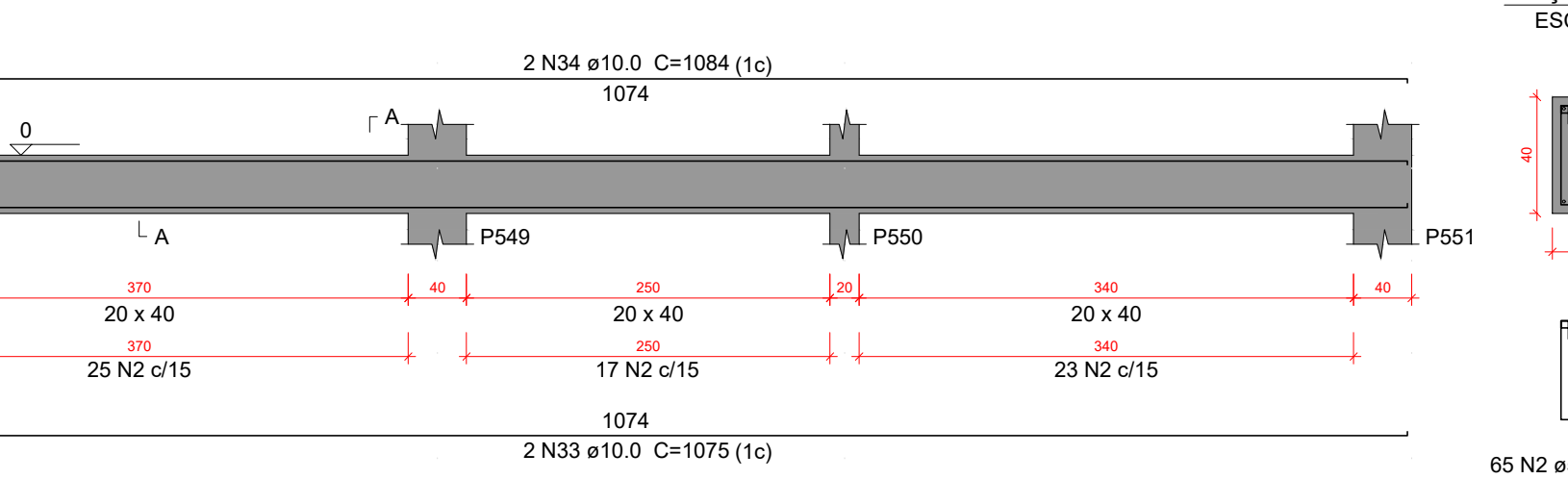
VT325



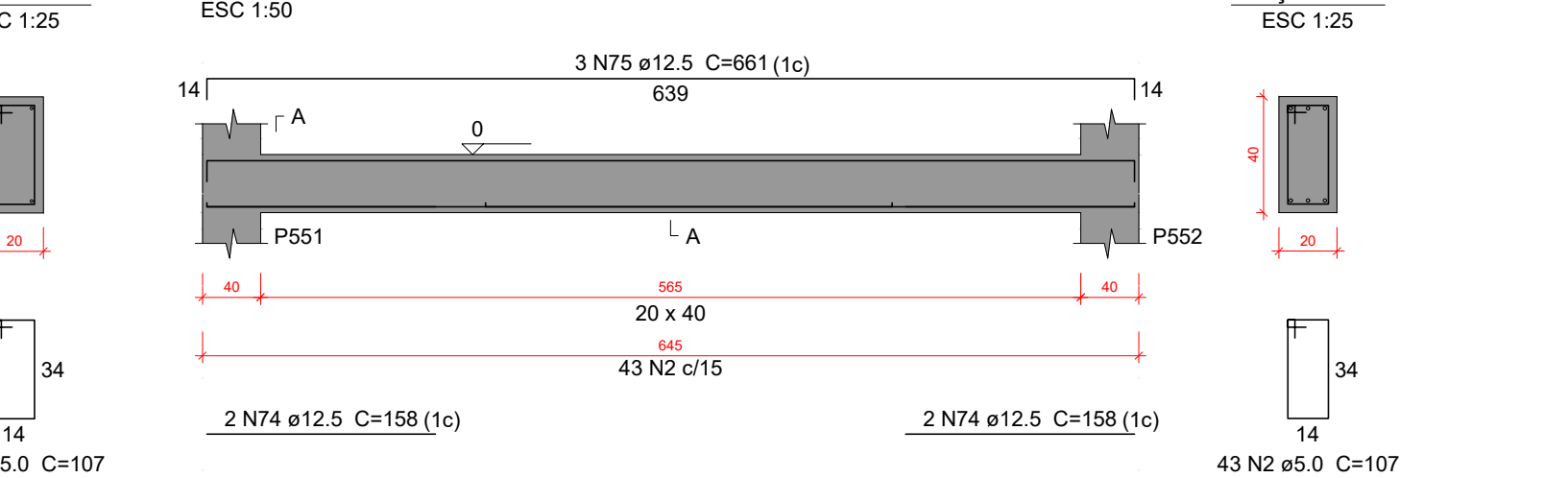
VT326



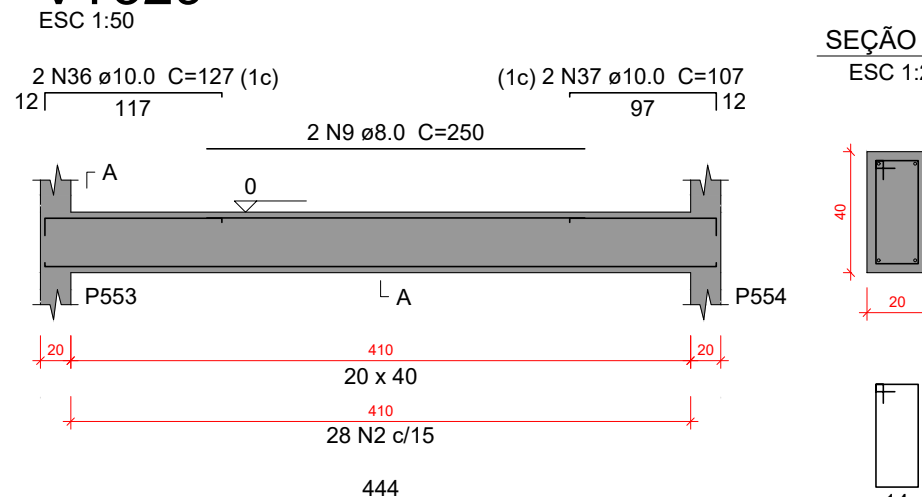
VT327



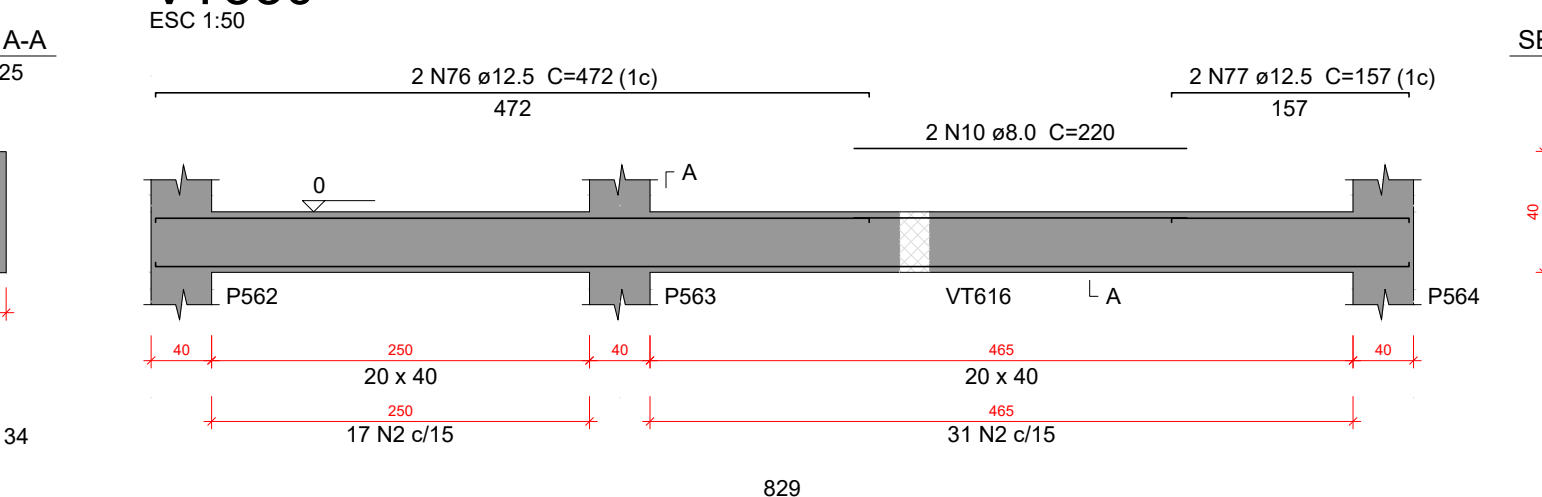
VT328



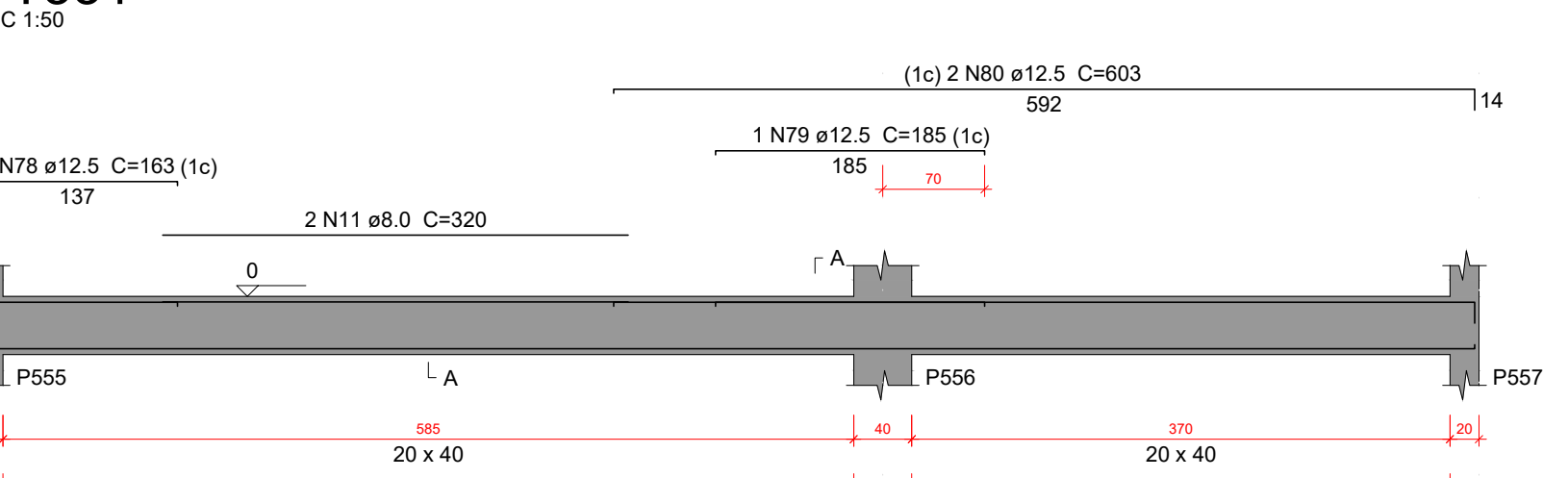
VT329



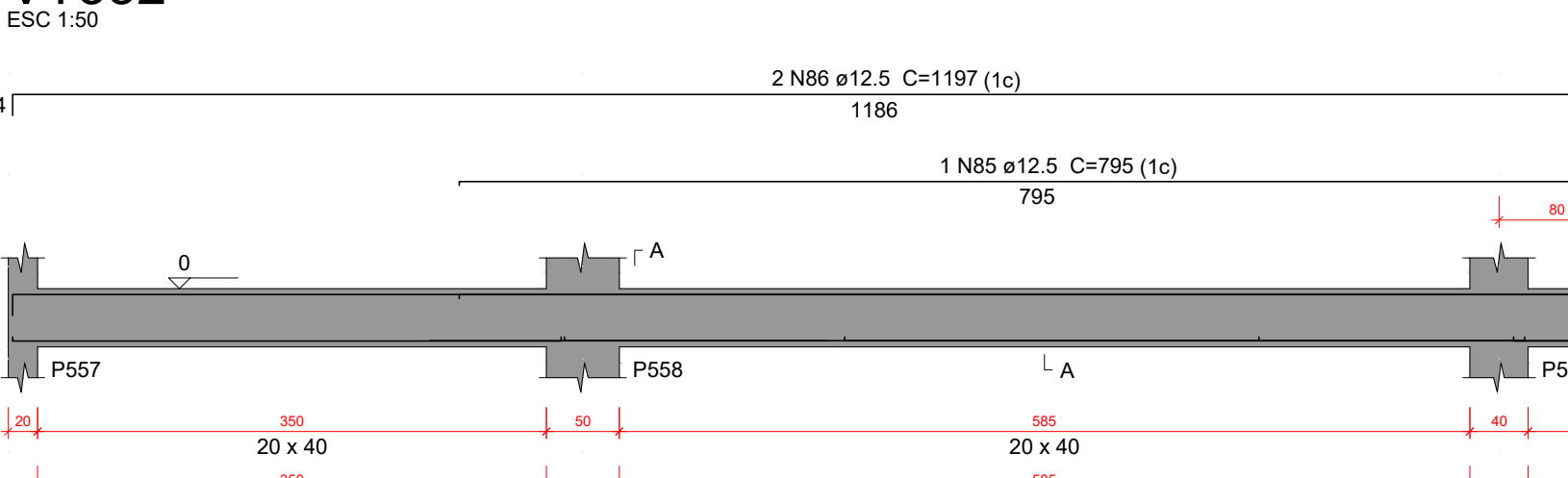
VT330



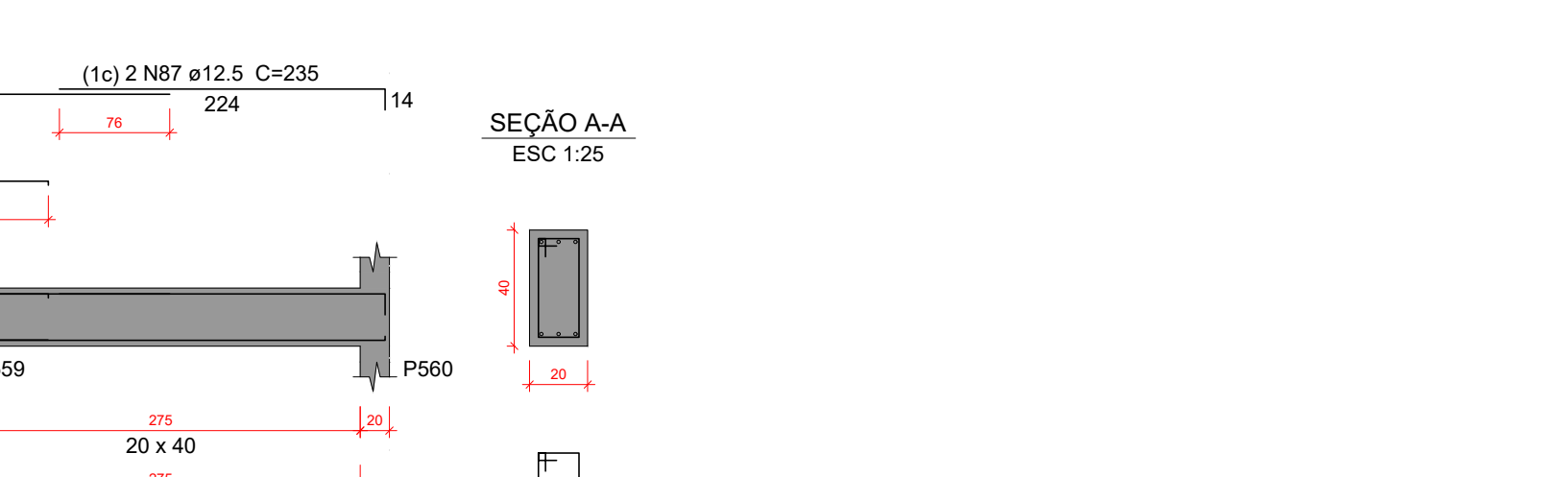
VT331



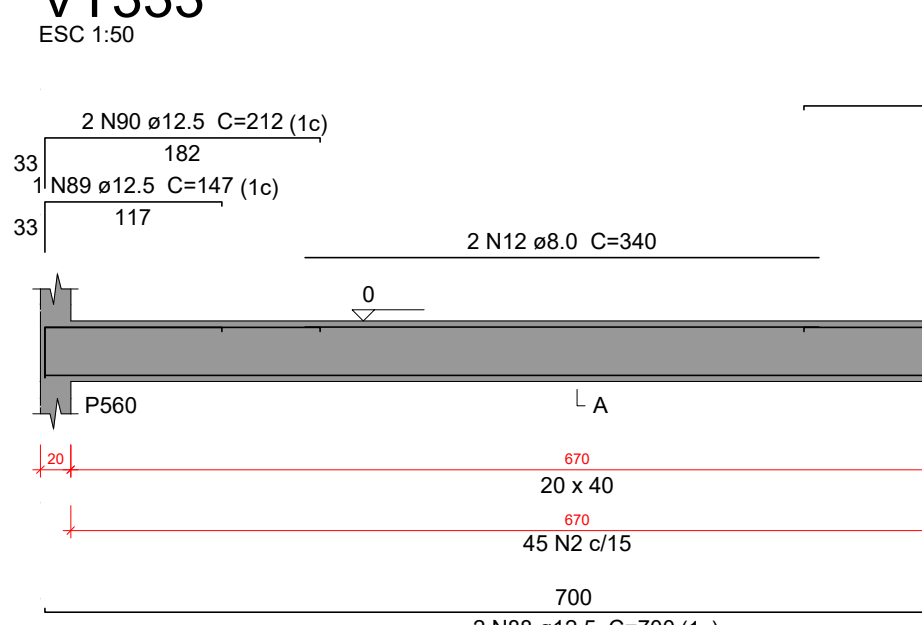
VT332



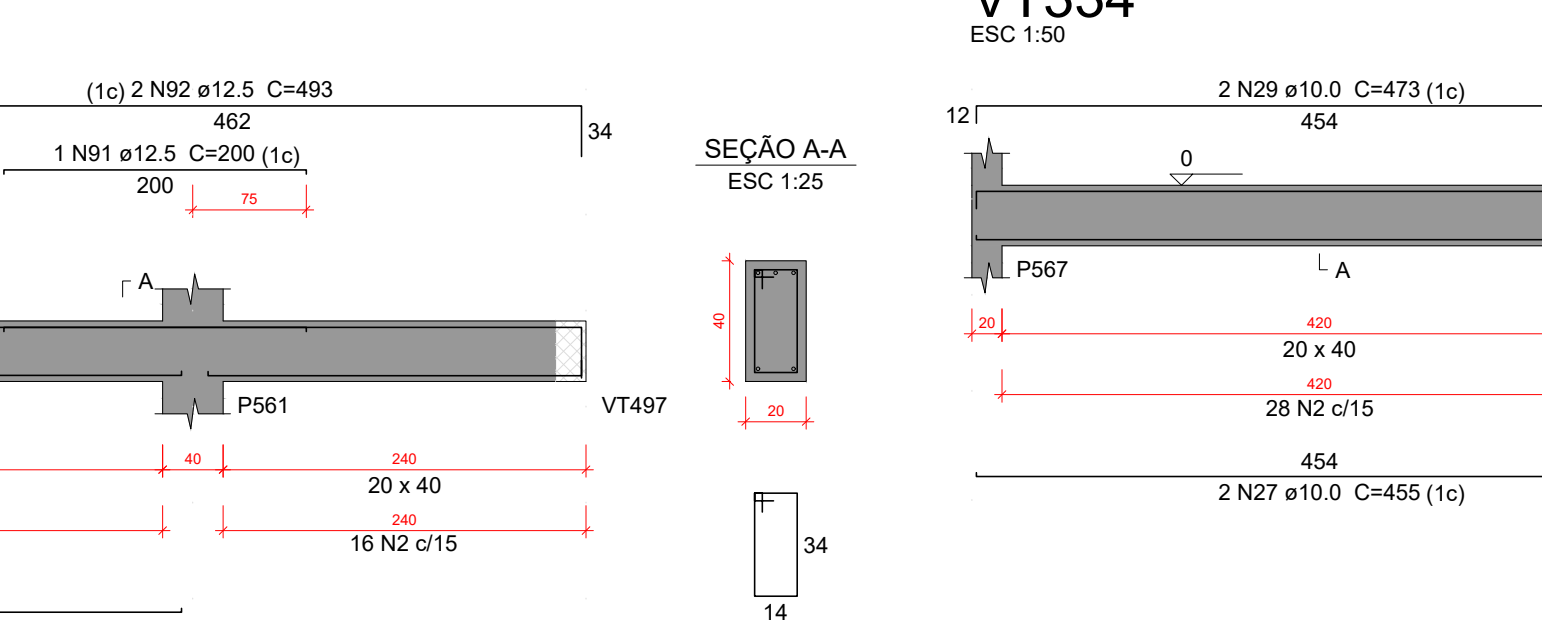
VT333



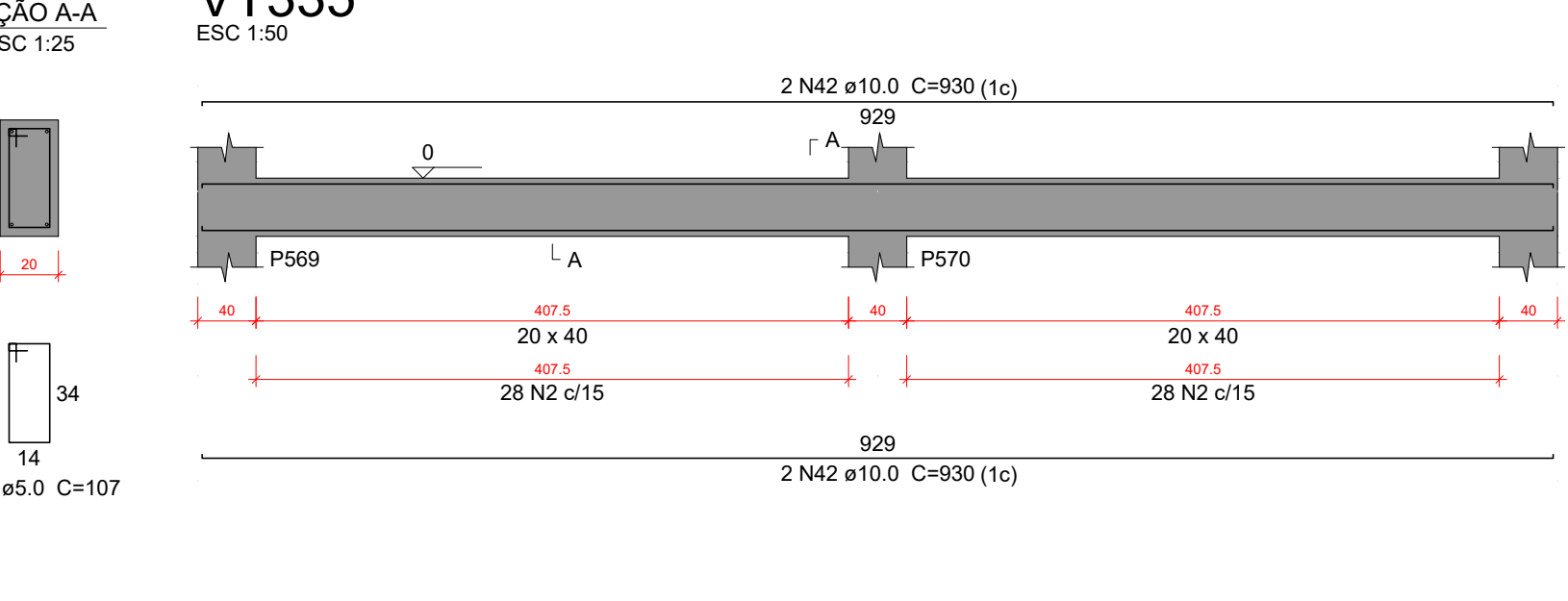
VT333



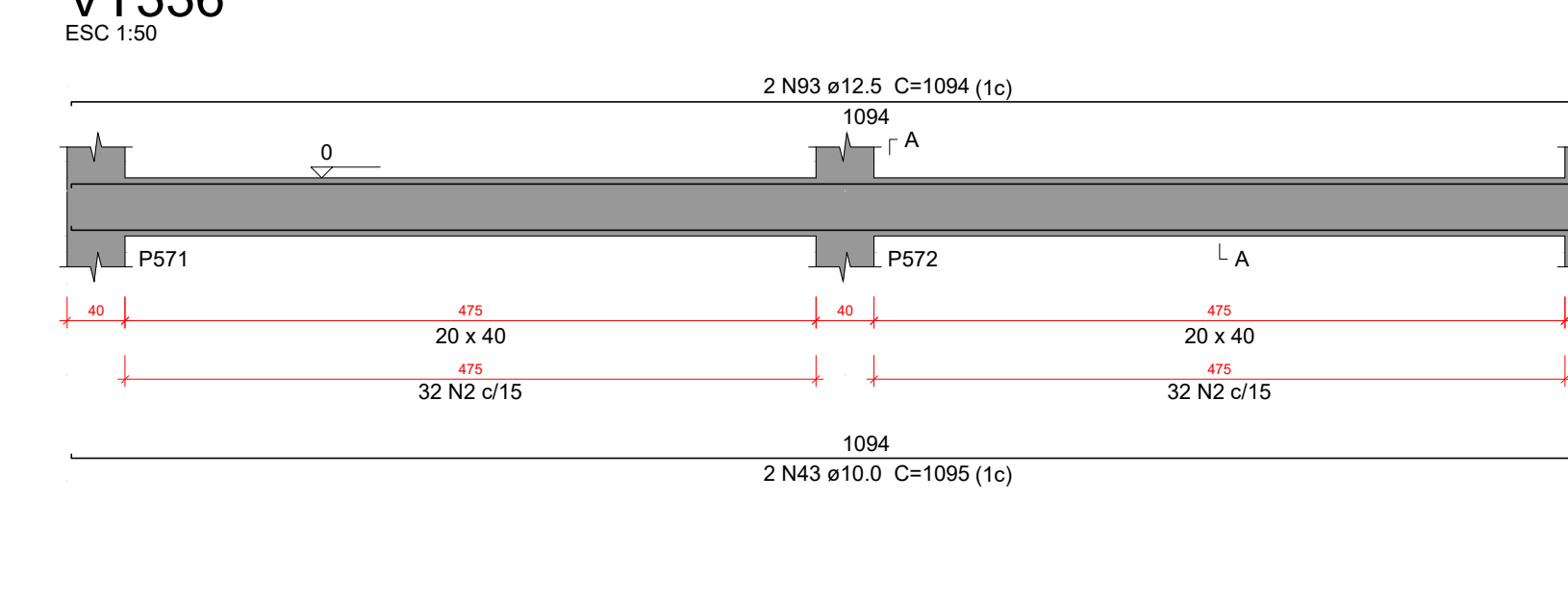
VT334



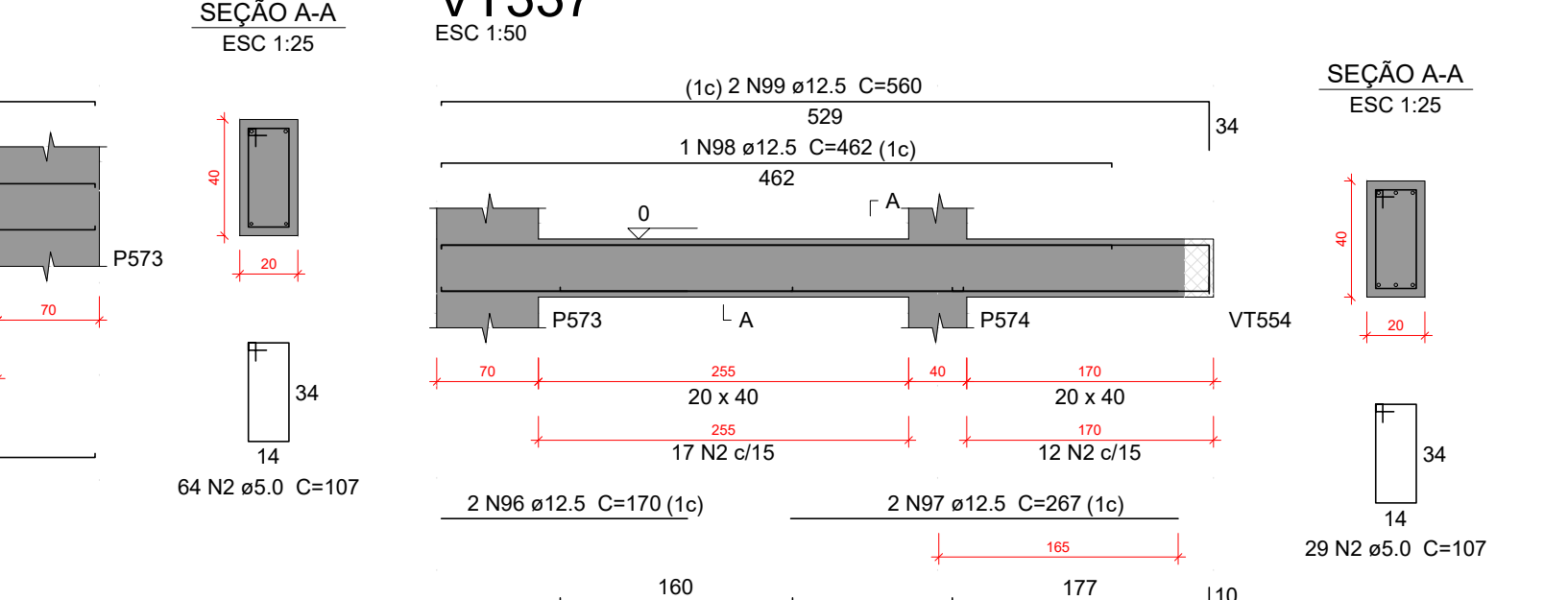
VT335



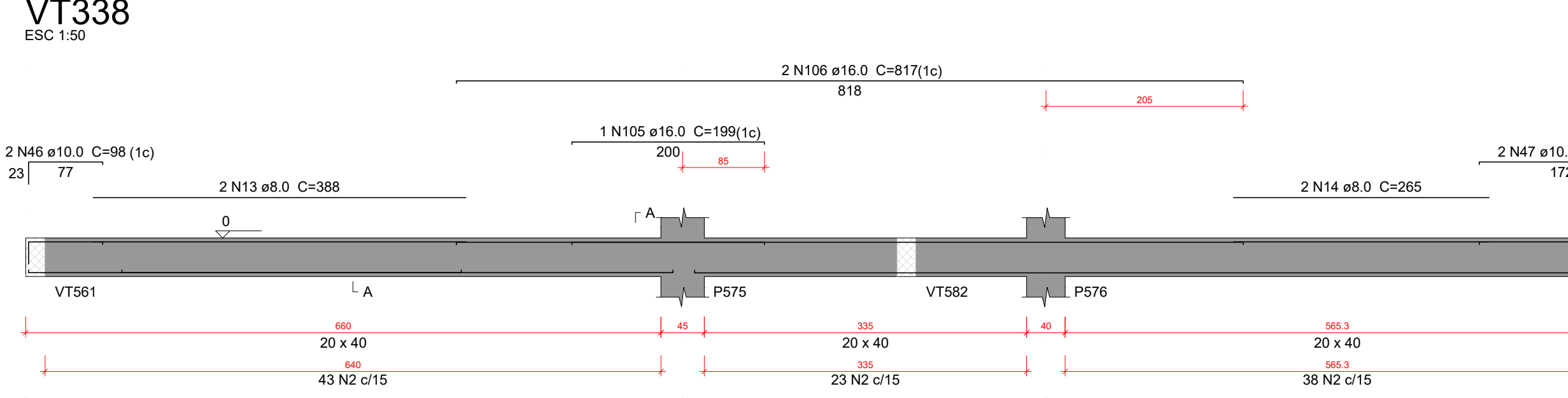
VT336



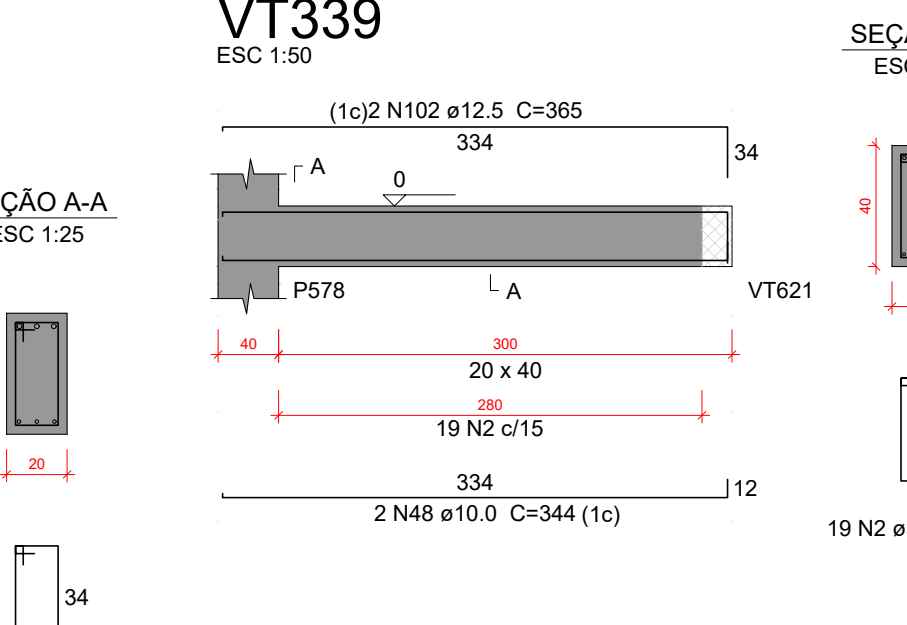
VT337



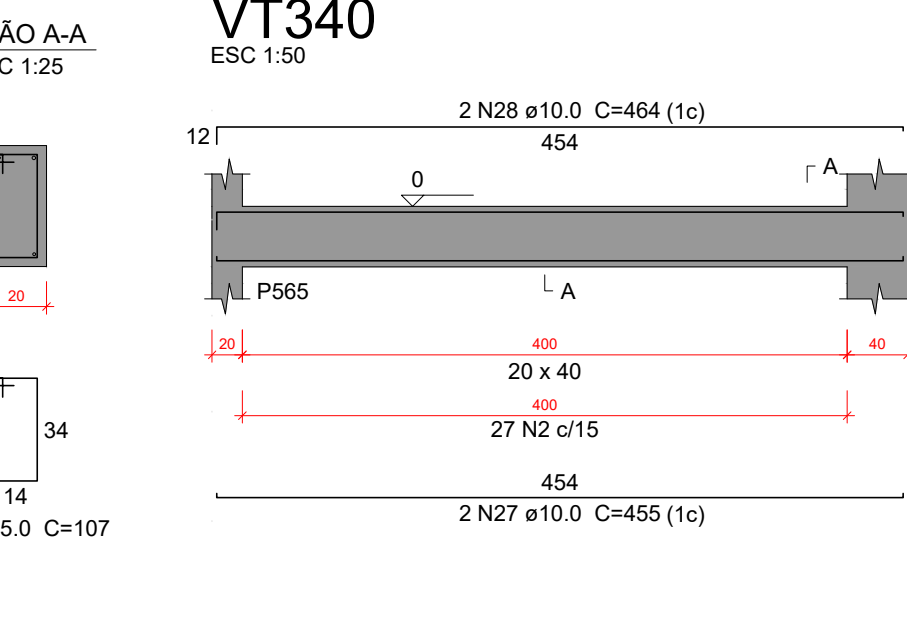
VT338



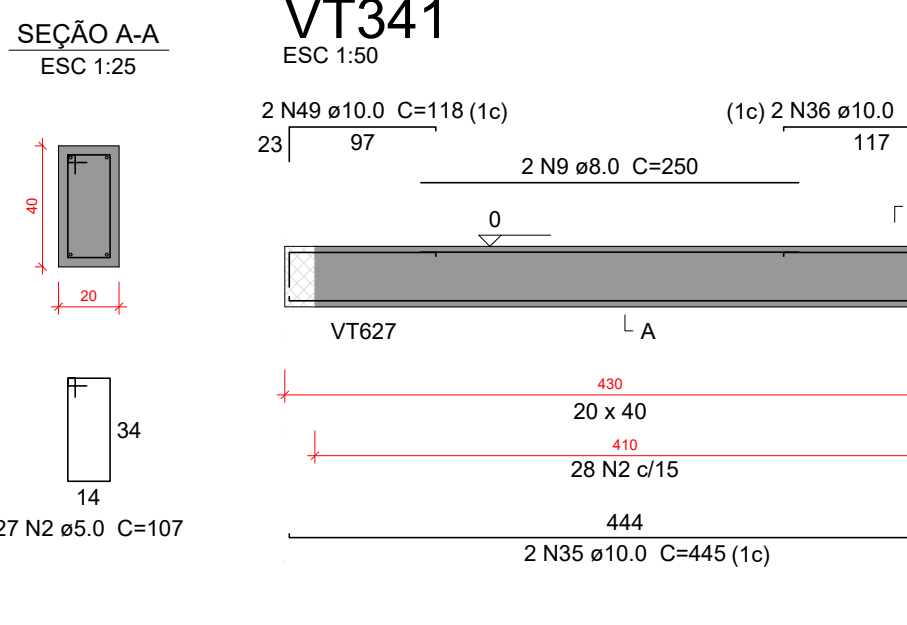
VT339



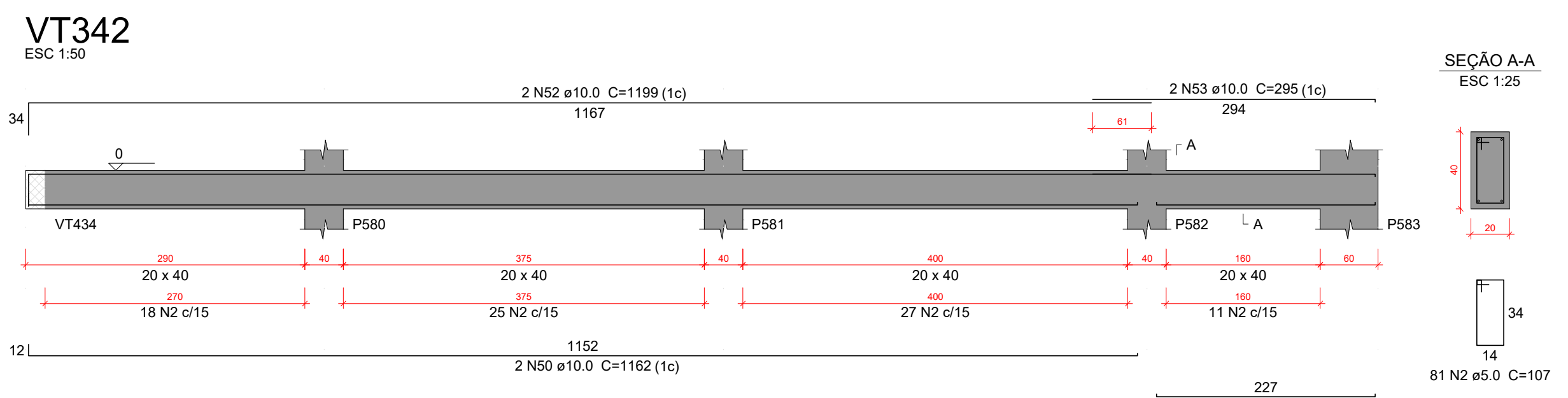
VT340



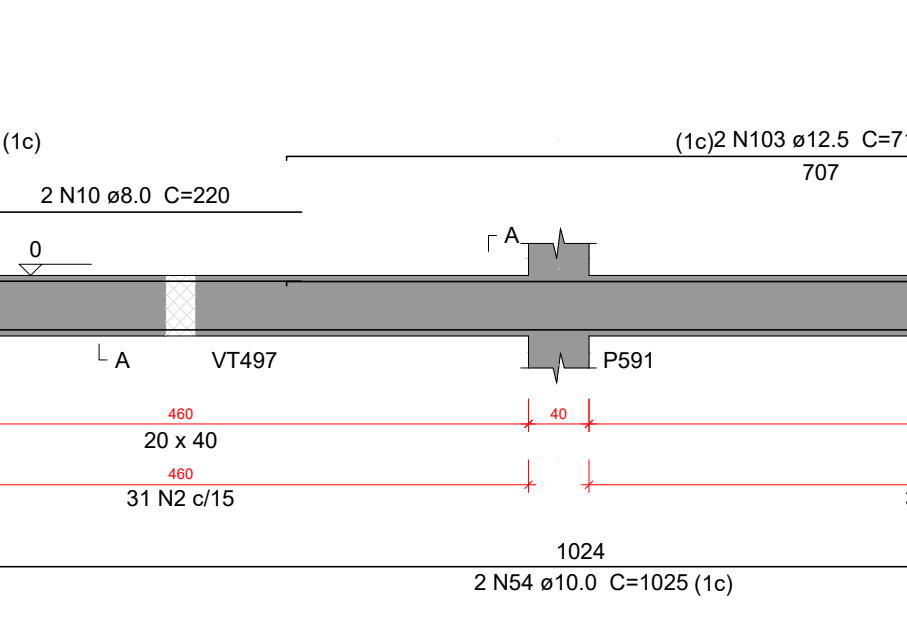
VT341



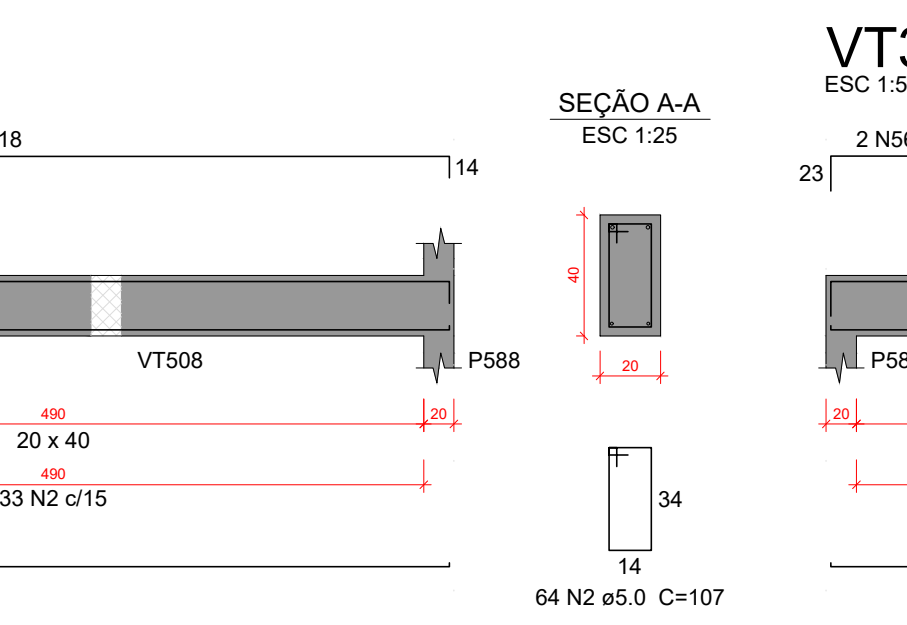
VT342



VT343



VT344



Relação do aço

VT	AÇO	N	DIAM (mm)	QUANT	C UNIT (cm)	C TOTAL (cm)	PESO (kg)
VT316	CA60	1	5.0	98	97	9508	9508
VT316	CA50	2	8.0	1417	107	151819	151819
VT316	CA50	3	8.0	2	1039	2078	2078
VT316	CA50	4	8.0	2	529	1058	1058
VT316	CA50	5	8.0	2	388	776	776
VT316	CA50	6	8.0	2	233	466	466
VT316	CA50	7	8.0	4	325	1300	1300
VT316	CA50	8	8.0	2	285	570	570
VT316	CA50	9	8.0	6	250	1500	1500
VT316	CA50	10	8.0	4	220	880	880
VT316	CA50	11	8.0	2	320	640	640
VT316	CA50	12	8.0	2	340	680	680
VT316	CA50	13	8.0	2	388	776	776
VT316	CA50	14	8.0	2	265	530	530
VT316	CA50	15	8.0	2	158	316	316
VT316	CA50	16	10.0	4	1070	4280	4280
VT316	CA50	17	10.0	2	577	1154	1154
VT316	CA50	18	10.0	2	1040	2080	2080
VT316	CA50	19	10.0	2	567	1134	1134
VT316	CA50	20	10.0	2	187	374	374
VT316	CA50	21	10.0	2	421	842	842
VT316	CA50	22	10.0	2	204	408	408
VT316	CA50	23	10.0	2	233	466	466
VT316	CA50	24	10.0	2	388	776	776
VT316	CA50	25	10.0	2	464	928	928
VT316	CA50	26	10.0	2	772	1544	1544
VT316	CA50	27	10.0	8	484	3872	3872
VT316	CA50	28	10.0	2	454	908	908
VT316	CA50	29	10.0	4	473	1892	1892
VT316	CA50	30	10.0	2	141	282	282
VT316	CA50	31	10.0	2	837	1674	1674
VT316	CA50	32	10.0	2	141	282	282
VT316	CA50	33	10.0	2	1075	2150	2150
VT316	CA50	34	10.0	2	1094	2188	2188
VT316	CA50	35	10.0	4	1780	7120	7120
VT316	CA50	36	10.0	6	127	762	762
VT316	CA50	37	10.0	2	187	374	374
VT316	CA50	38	10.0	2	800	1600	1600
VT316	CA50	39	10.0	2	378	756	756
VT316	CA50	40	10.0	2	187	374	374
VT316	CA50	41	10.0	2	255	510	510
VT316	CA50	42	10.0	4	850	3400	3400
VT316	CA50	43	10.0	4	1000	2000	2000
VT316	CA50	44	10.0	2	185	370	370
VT316	CA50	45	10.0	4	888	3552	3552
VT316	CA50	46	10.0	2	98	196	196
VT316	CA50	47	10.0	2	344	688	688
VT316	CA50	48	10.0	2	118	236	236
VT316	CA50	49	10.0	2	224	448	448
VT316	CA50	50	10.0	2	228	456	456
VT316	CA50	51	10.0	2	296	592	592
VT316	CA50	52	10.0	2	1065	2130	2130
VT316	CA50	53	10.0	2	205	410	410
VT316	CA50	54	10.0	2	2050	4100	4100
VT316	CA50	55	10.0	2	1189	2378	2378
VT316	CA50	56	10.0	2	188	376	