



RELATÓRIO FOTOGRÁFICO DAS RODOVIAS PAVIMENTADAS E NÃO PAVIMENTADAS DO ESTADO DE MATO GROSSO DO SUL

VOLUME 4

LOTE 10

Fevereiro de 2026



RELATÓRIO FOTOGRÁFICO



LOTE 10

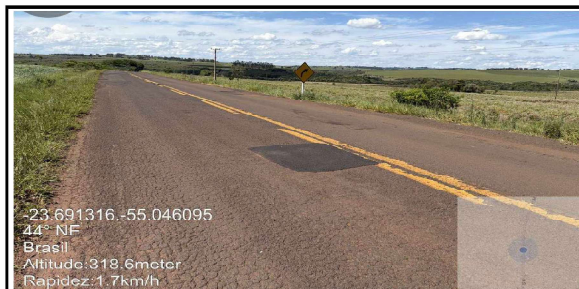


Foto 01 MS-160

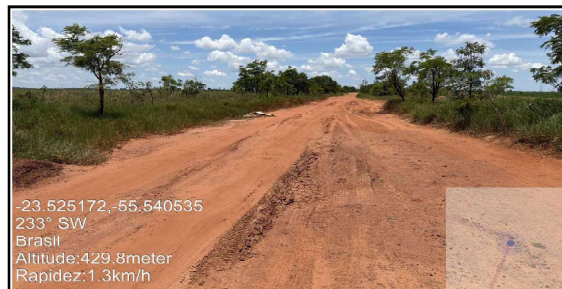


Foto 02 MS-165



Foto 03 MS-165



Foto 04 MS-295

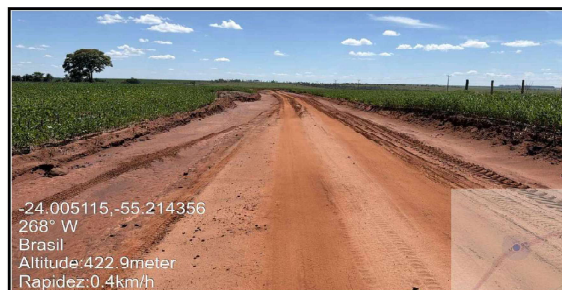


Foto 05 MS-299

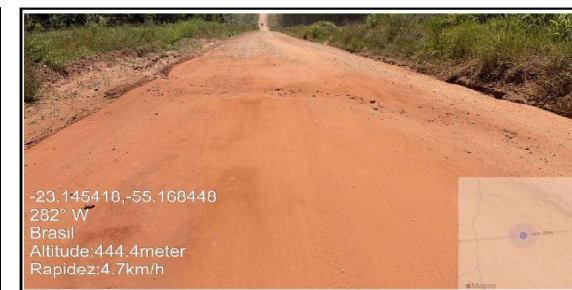


FOTO 06 MS-289



Foto 07 MS-379



Foto 08 MS-386



Foto 09 MS-485



RELATÓRIO FOTOGRÁFICO



LOTE 10

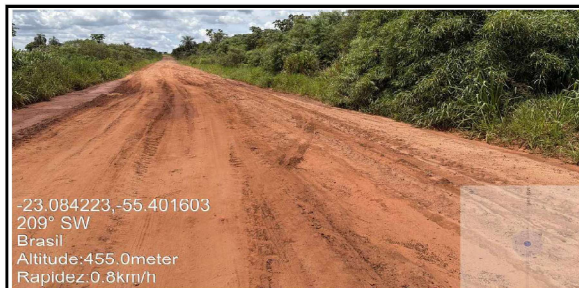


Foto 10 MS-486

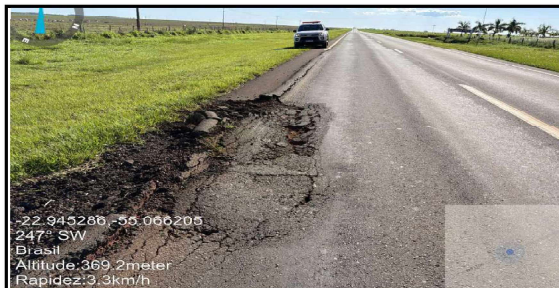


Foto 11 MS-156



Foto 12 MS-286



Foto 13 MS-481



Foto 14 MS-379

