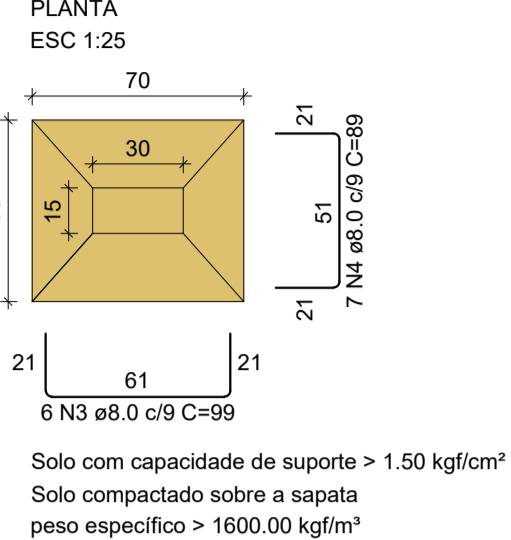
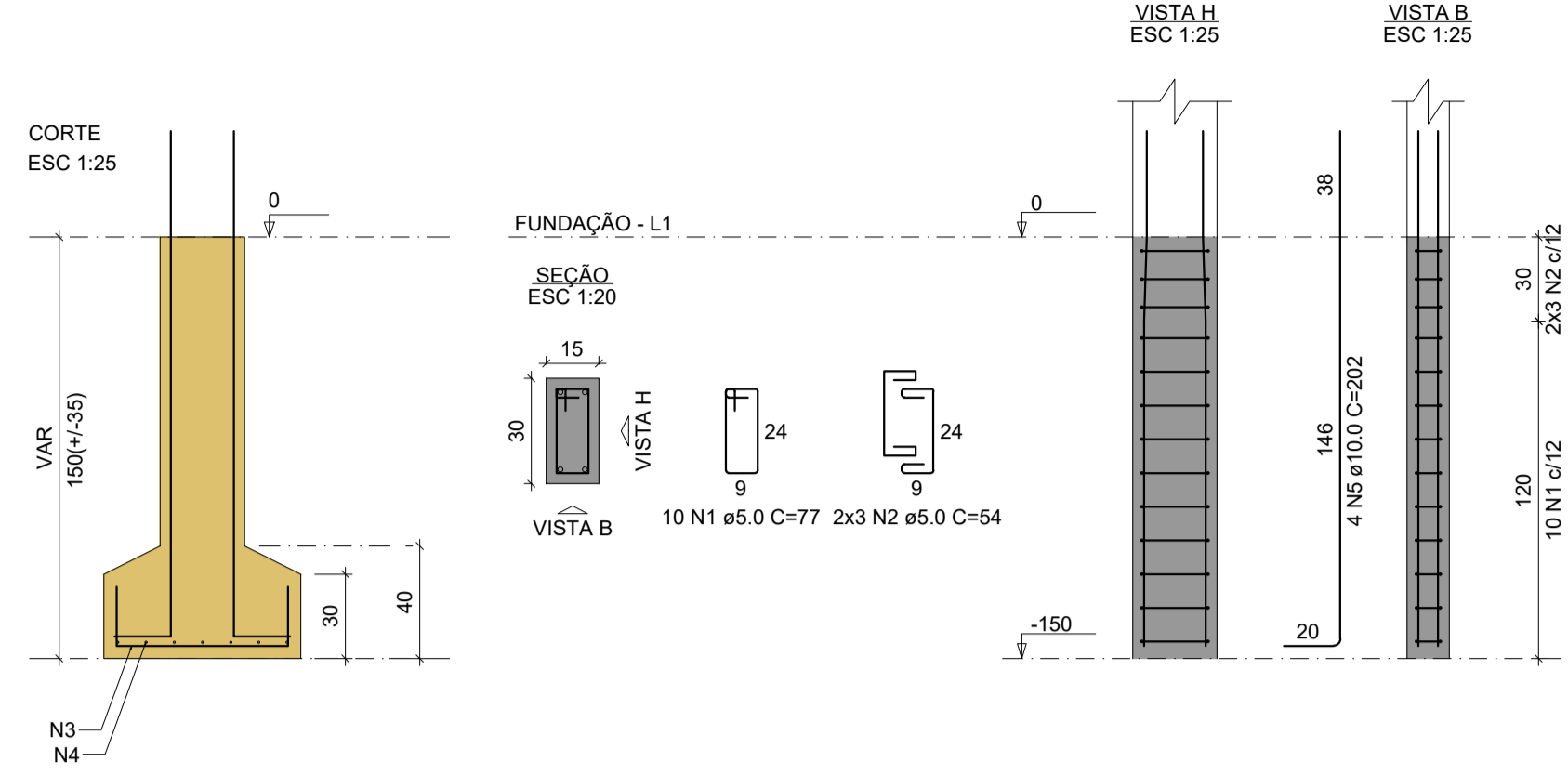


S1=S2=S3=S4



Solo com capacidade de suporte > 1.50 kgf/cm²
Solo compactado sobre a sapata
peso específico > 1600.00 kg/m³

P1=P2=P3=P4



RELAÇÃO DO AÇO

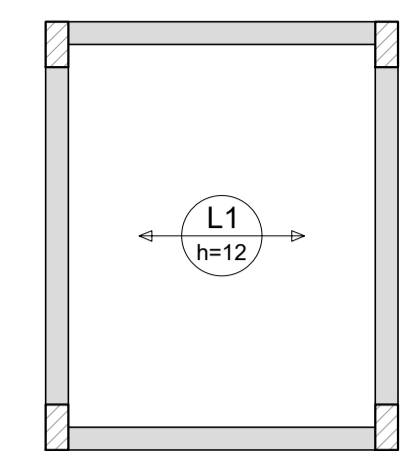
AÇO	N	DIAM (mm)	QUANT	C.UNIT (cm)	C.TOTAL (cm)
CA60	1	5.0	40	77	3080
CA50	2	5.0	24	54	1296
CA50	3	8.0	24	99	2376
CA50	4	8.0	28	89	2492
CA50	5	10.0	16	202	3232

RESUMO DO AÇO

AÇO	DIAM (mm)	C.TOTAL (m)	PESO + 10% (kg)
CA50	8.0	48.7	21.1
CA60	10.0	32.3	21.9
CA60	5.0	43.8	7.4

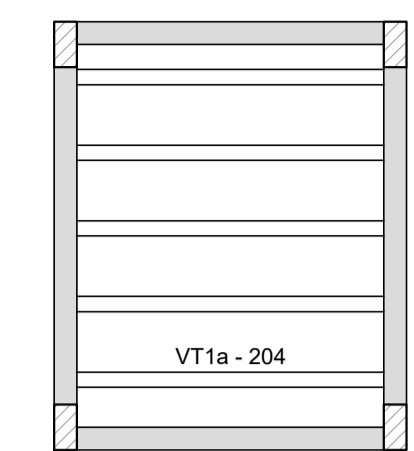
PESO TOTAL (kg)
CA50 43
CA60 7.4

Volume de concreto (C-25) = 0.78 m³
Área de forma = 7.08 m²



Armação positiva das lajes do pavimento Pavimento (Eixo X)

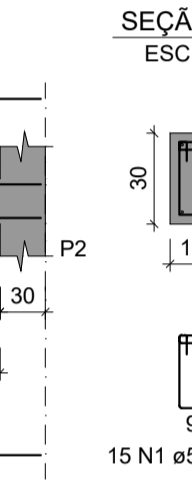
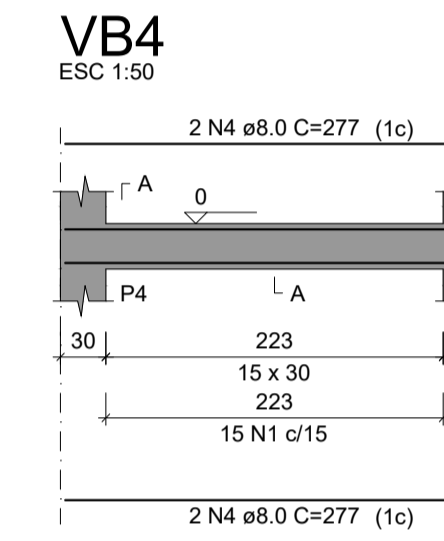
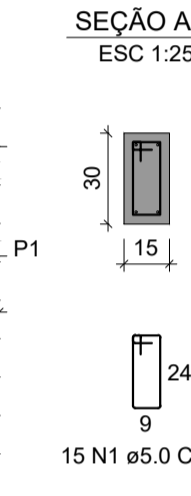
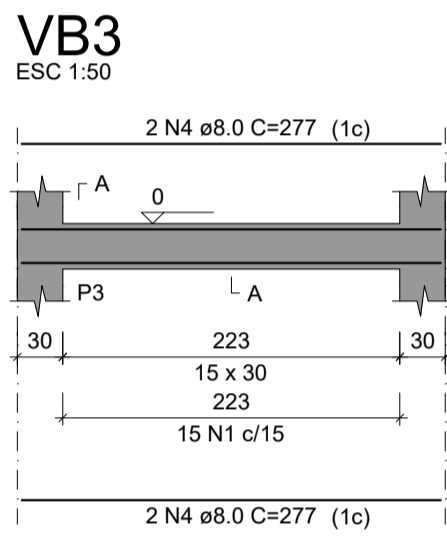
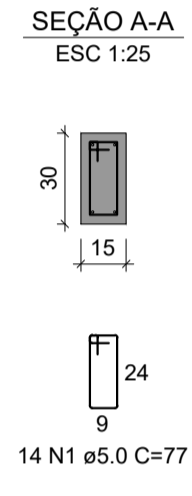
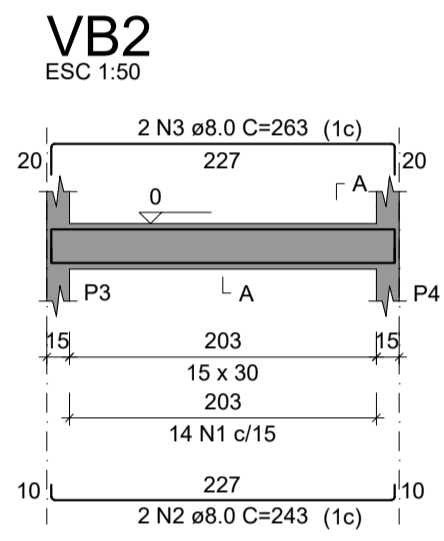
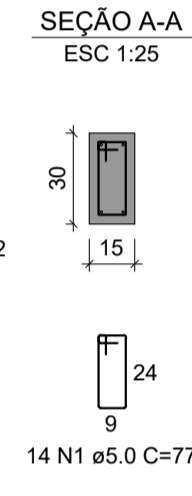
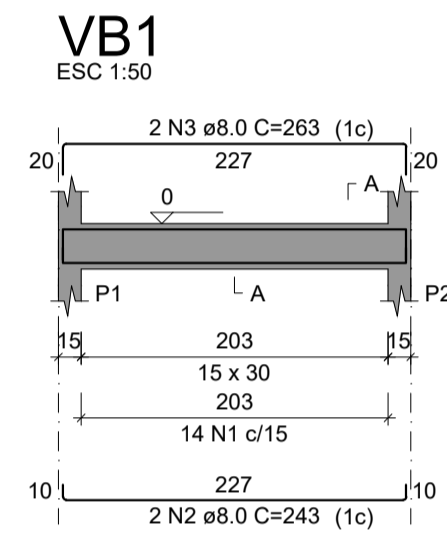
escala 1:50



Planta de vigotas pré-moldadas

escala 1:50

RELAÇÃO DO AÇO
Volume de concreto (C-25)
Área de forma = 0.00 m²



RELAÇÃO DO AÇO

AÇO	N	DIAM (mm)	QUANT	C.UNIT (cm)	C.TOTAL (cm)
CA60	1	5.0	58	77	4466
CA50	2	8.0	4	243	972
CA50	3	8.0	4	263	1052
CA50	4	8.0	8	277	2216

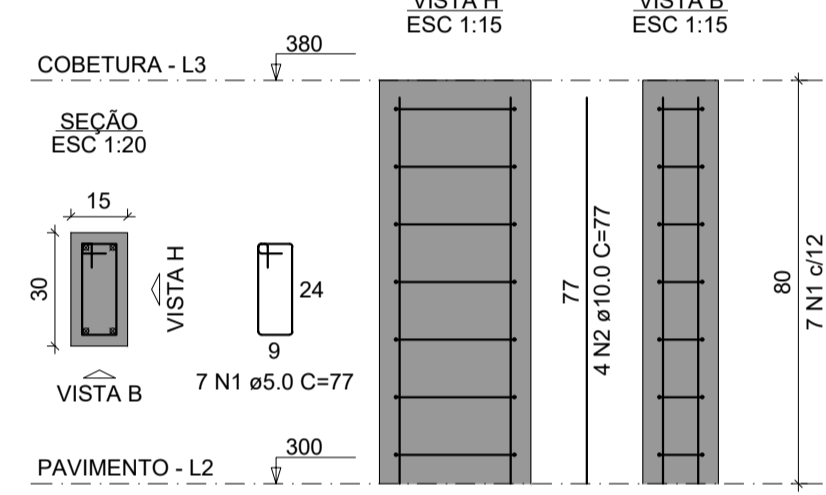
RESUMO DO AÇO

AÇO	DIAM (mm)	C.TOTAL (m)	PESO + 10% (kg)
CA50	8.0	42.4	18.4
CA60	5.0	44.7	7.6

PESO TOTAL (kg)
CA50 18.4
CA60 7.6

Volume de concreto (C-25) = 0.38 m³
Área de forma = 6.39 m²

P1=P2=P3=P4



RELAÇÃO DO AÇO

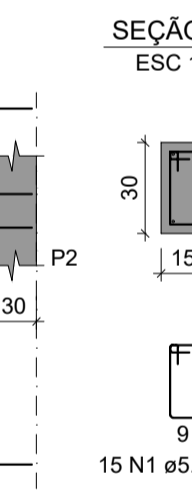
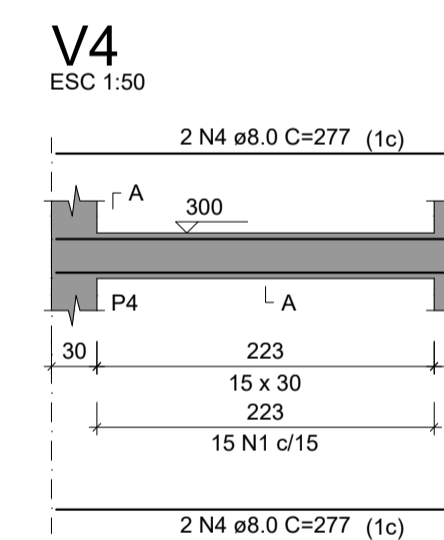
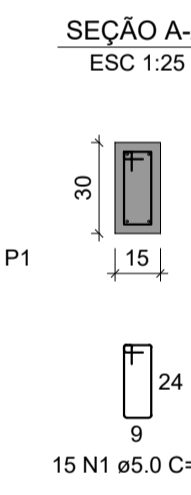
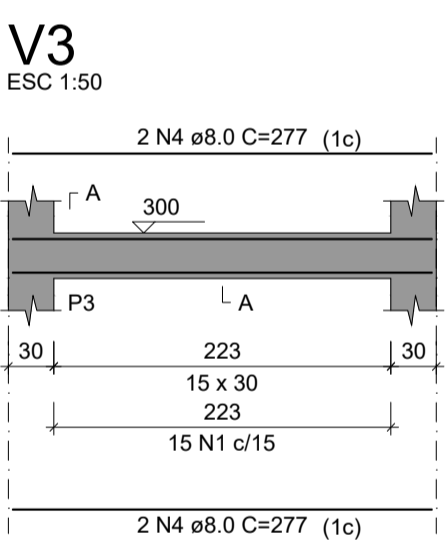
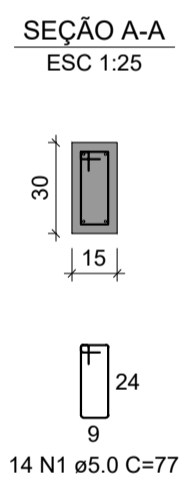
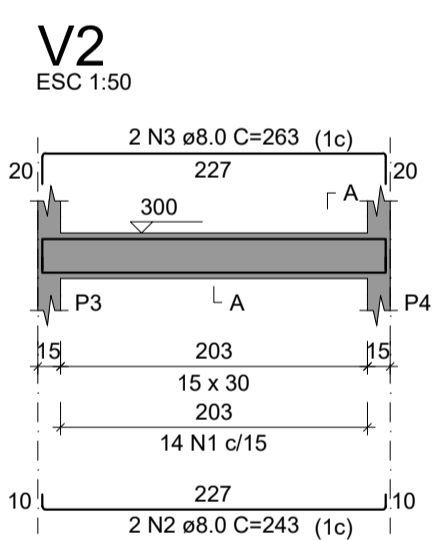
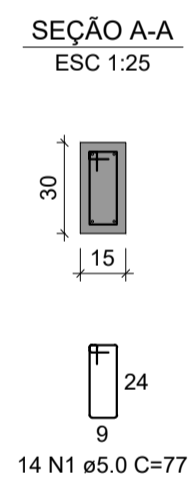
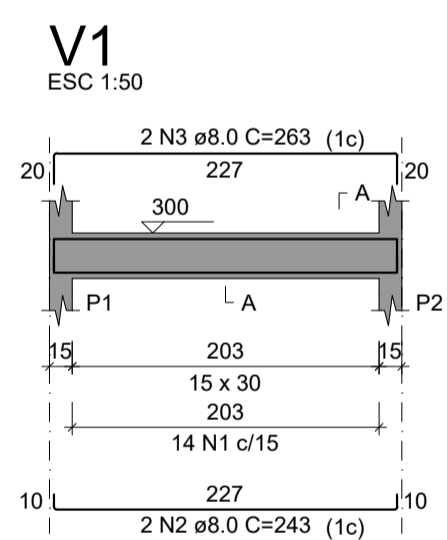
AÇO	N	DIAM (mm)	QUANT	C.UNIT (cm)	C.TOTAL (cm)
CA60	1	5.0	28	77	2156
CA50	2	10.0	16	77	1232

RESUMO DO AÇO

AÇO	DIAM (mm)	C.TOTAL (m)	PESO + 10% (kg)
CA50	10.0	12.3	8.4
CA60	5.0	21.6	3.7

PESO TOTAL (kg)
CA50 8.4
CA60 3.7

Volume de concreto (C-25) = 0.14 m³
Área de forma = 2.88 m²



RELAÇÃO DO AÇO

AÇO	N	DIAM (mm)	QUANT	C.UNIT (cm)	C.TOTAL (cm)
CA60	1	5.0	58	77	4466
CA50	2	8.0	4	243	972
CA50	3	8.0	4	263	1052
CA50	4	8.0	8	277	2216

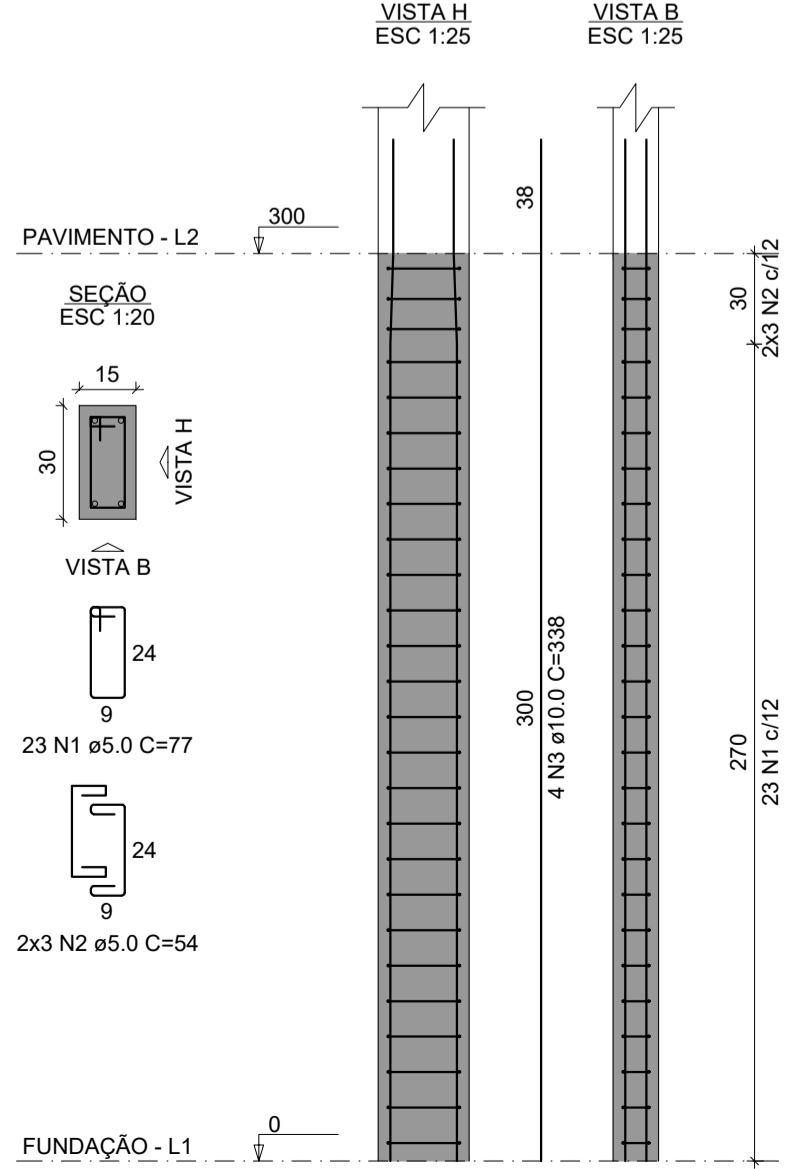
RESUMO DO AÇO

AÇO	DIAM (mm)	C.TOTAL (m)	PESO + 10% (kg)
CA50	8.0	42.4	18.4
CA60	5.0	44.7	7.6

PESO TOTAL (kg)
CA50 18.4
CA60 7.6

Volume de concreto (C-25) = 0.38 m³
Área de forma = 5.37 m²

P1=P2=P3=P4



RELAÇÃO DO AÇO

AÇO	N	DIAM (mm)	QUANT	C.UNIT (cm)	C.TOTAL (cm)
CA60	1	5.0	92	77	7084
CA50	2	5.0	24	54	1296
CA50	3	10.0	16	338	5408

RESUMO DO AÇO

AÇO	DIAM (mm)	C.TOTAL (m)	PESO + 10% (kg)
CA50	10.0	54.1	36.7
CA60	5.0	83.8	14.2

PESO TOTAL (kg)
CA50 36.7
CA60 14.2

Volume de concreto (C-25) = 0.54 m³
Área de forma = 10.80 m²

CONTRATADA:		CONTRATANTE:	
 CNPJ Nº: 14.783.066/0001-35 AVENIDA MESTRA FRINHA, Nº 726 - 1º ANDAR, CIDADE SANTA MARIA, MONTES CLAROS/MG - CEP: 39401-074		 CNPJ Nº: 14.885.485/0001-88 PRAÇA DA MATRIZ, Nº 285 - CENTRO FRANCISCO DUMONT/MG - CEP: 39387-000	
RESPONSÁVEL TÉCNICO:		RESPONSÁVEL LEGAL:	
_____ IWAN MATEUS COSTA SOUZA CREA/CAU: 255.542/D - MG		_____ PREFEITO(A) MUNICIPAL DE FRANCISCO DUMONT	
CONSTRUÇÃO DO NOVO ACESSO ESCOLA MUNICIPAL HENRIQUETA MEDEIROS PIMENTEL			
DESCRIÇÃO: DETALHAMENTO DOS ELEMENTOS ESTRUTURAIS DAS VIGAS, PILARES, QUADROS DE AÇO E LAJES.			
ENDEREÇO DA OBRA: AV ODILON LOURDES, Nº 378			
MUNICÍPIO: FRANCISCO DUMONT/MG		DATA INICIAL: 23 DE OUTUBRO DE 2025	
FASE DO PROJETO: INICIAL		ART/RTT: DATA DA REV.:	
REFERÊNCIA DO PROJETO: FCD-0177		ESCALA: INDICADAS Nº REVISÃO: 00	
		02/02	

ESTRUTURAL