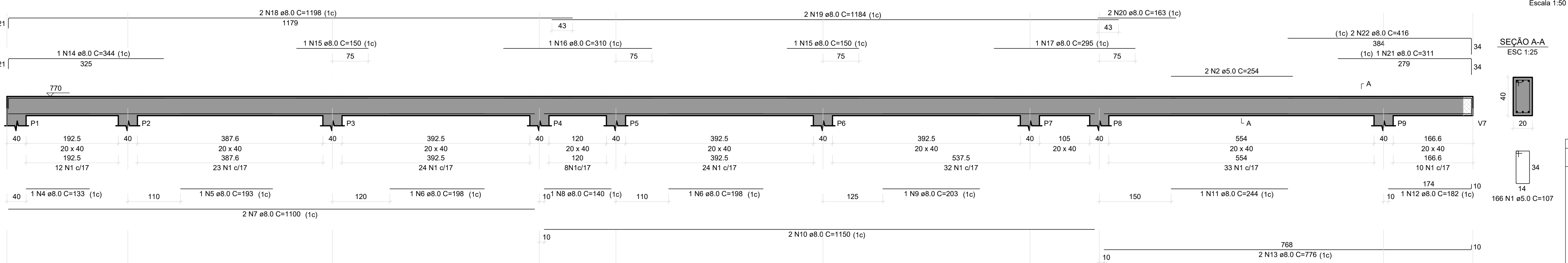
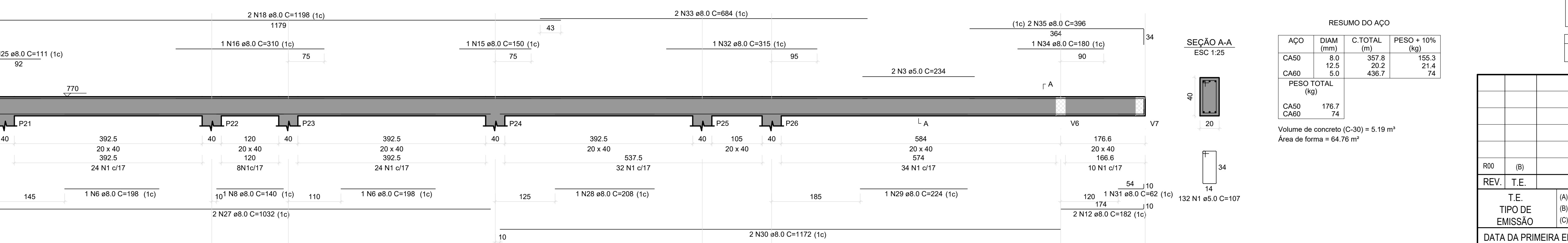


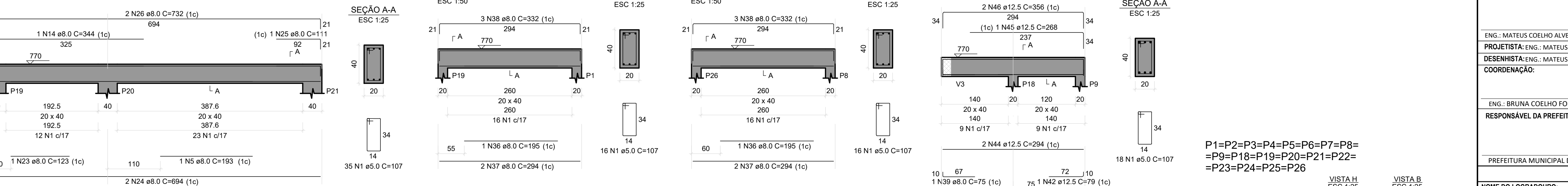
V1
ESC 1:50



V3
ESC 1:50



V2
ESC 1:50



V7
ESC 1:50



RELAÇÃO DO AÇO					
V1 V4 V7		V2 V5		V3 V6	
AÇO	N	DIAM (mm)	QUANT	C.UNIT (cm)	C.TOTAL (cm)
CA60	1	5.0	399	107	42693
	2	5.0	2	254	508
CA50	3	5.0	2	234	468
	4	8.0	1	133	133
	5	8.0	2	193	386
	6	8.0	4	198	792
	7	8.0	2	1100	2200
	8	8.0	2	140	280
	9	8.0	1	203	203
	10	8.0	2	1150	2300
	11	8.0	1	244	244
	12	8.0	3	182	546
	13	8.0	2	776	1552
	14	8.0	2	344	688
	15	8.0	3	150	450
	16	8.0	2	310	620
	17	8.0	1	295	295
	18	8.0	4	1198	4792
	19	8.0	2	1184	2368
	20	8.0	2	163	326
21	8.0	1	311	311	
22	8.0	2	416	832	
23	8.0	1	123	123	
24	8.0	2	694	1388	
25	8.0	2	111	222	
26	8.0	2	732	1464	
27	8.0	2	1032	2064	
28	8.0	1	208	208	
29	8.0	1	224	224	
30	8.0	2	1172	2344	
31	8.0	1	62	62	
32	8.0	1	315	315	
33	8.0	2	684	1368	
34	8.0	1	180	180	
35	8.0	2	396	792	
36	8.0	2	195	390	
37	8.0	6	294	1764	
38	8.0	9	332	2988	
39	8.0	1	75	75	
40	8.0	2	155	310	
41	8.0	1	185	185	
42	12.5	1	79	79	
43	12.5	2	186	372	
44	12.5	2	294	588	
45	12.5	1	188	188	
46	12.5	2	356	712	