

FORMA DO PAVIMENTO BALDRAME

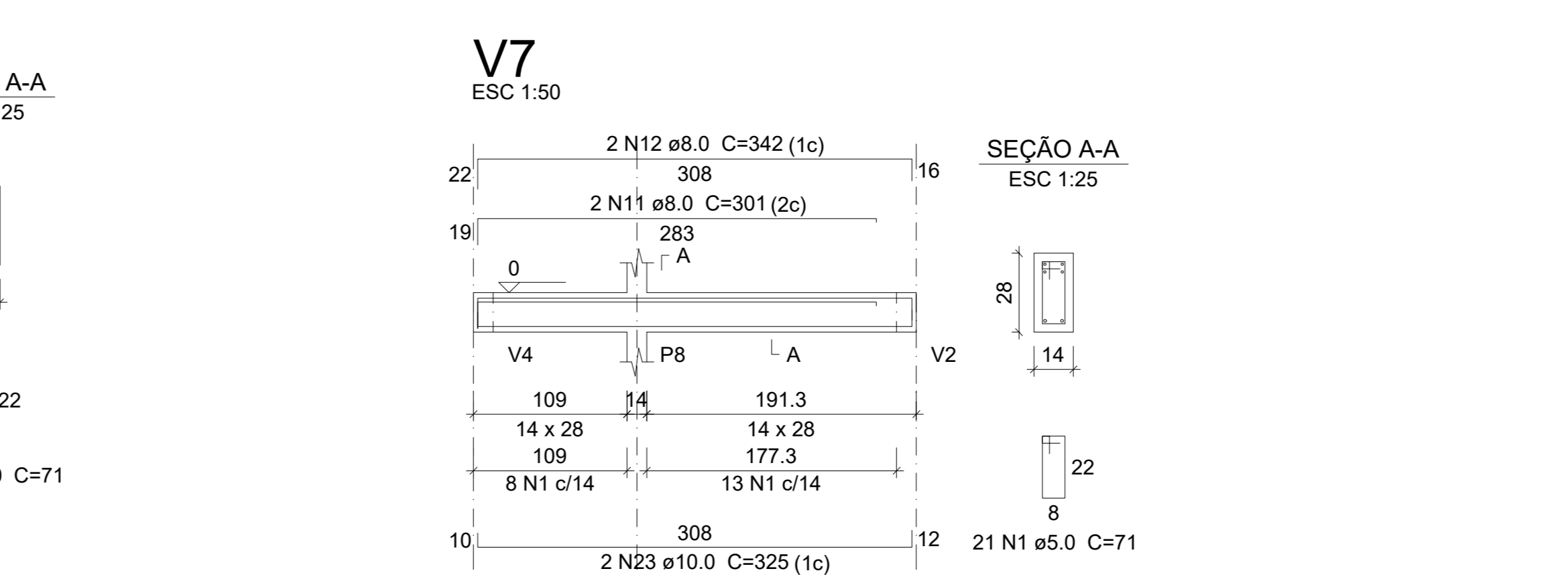
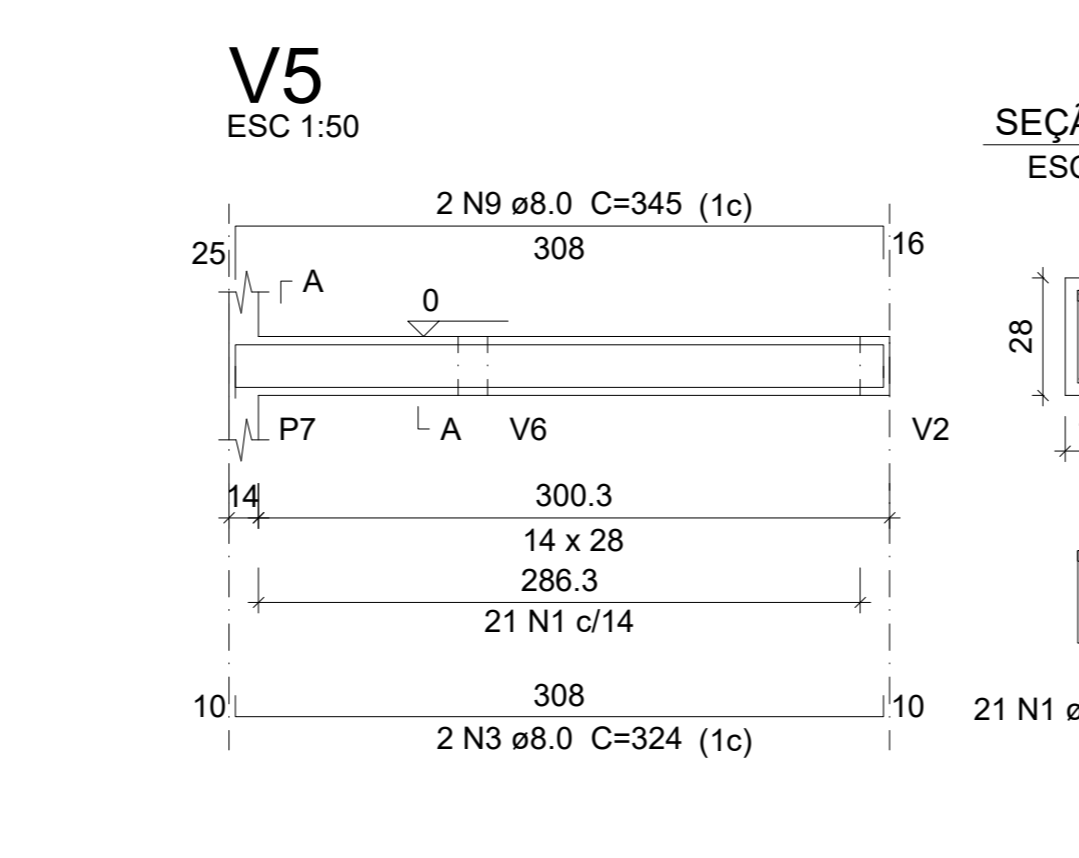
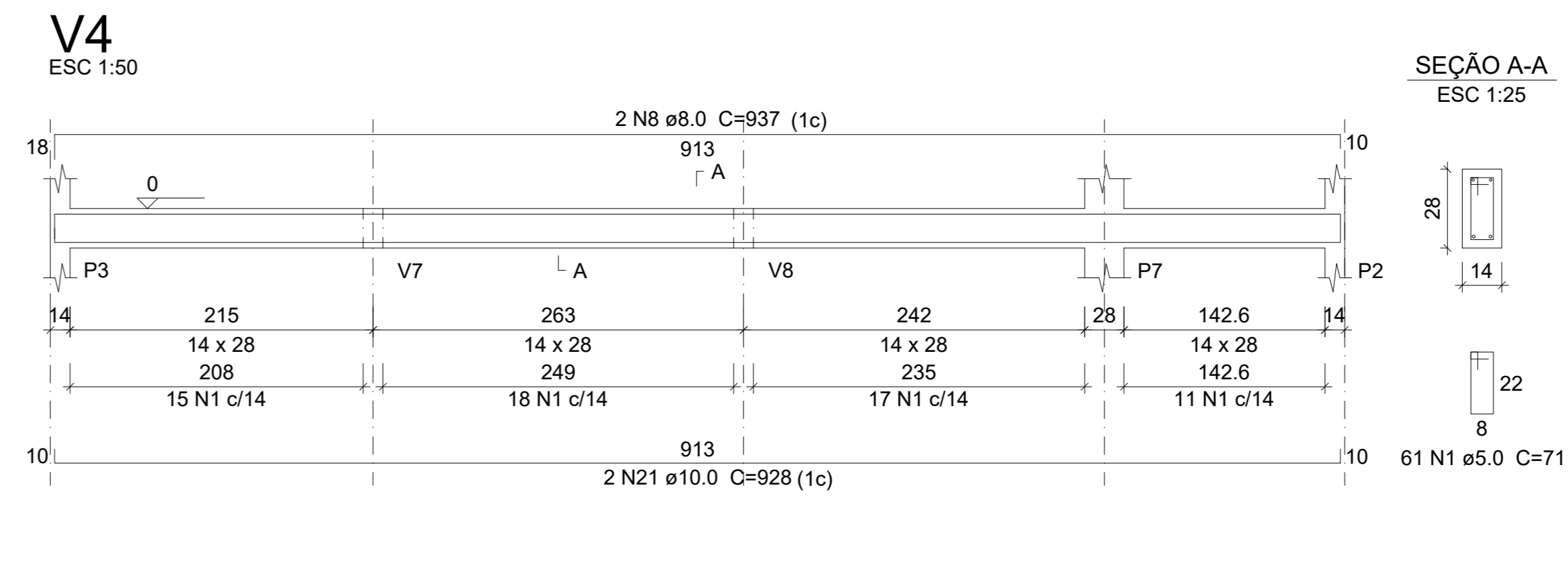
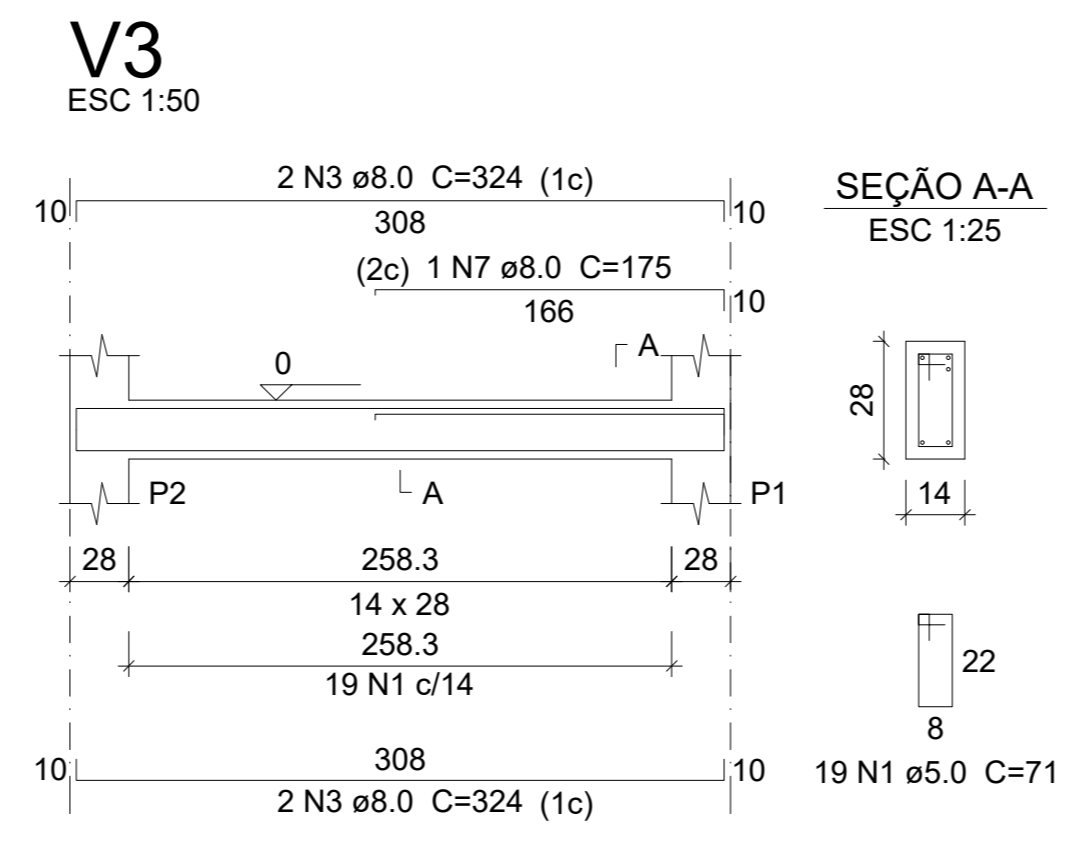
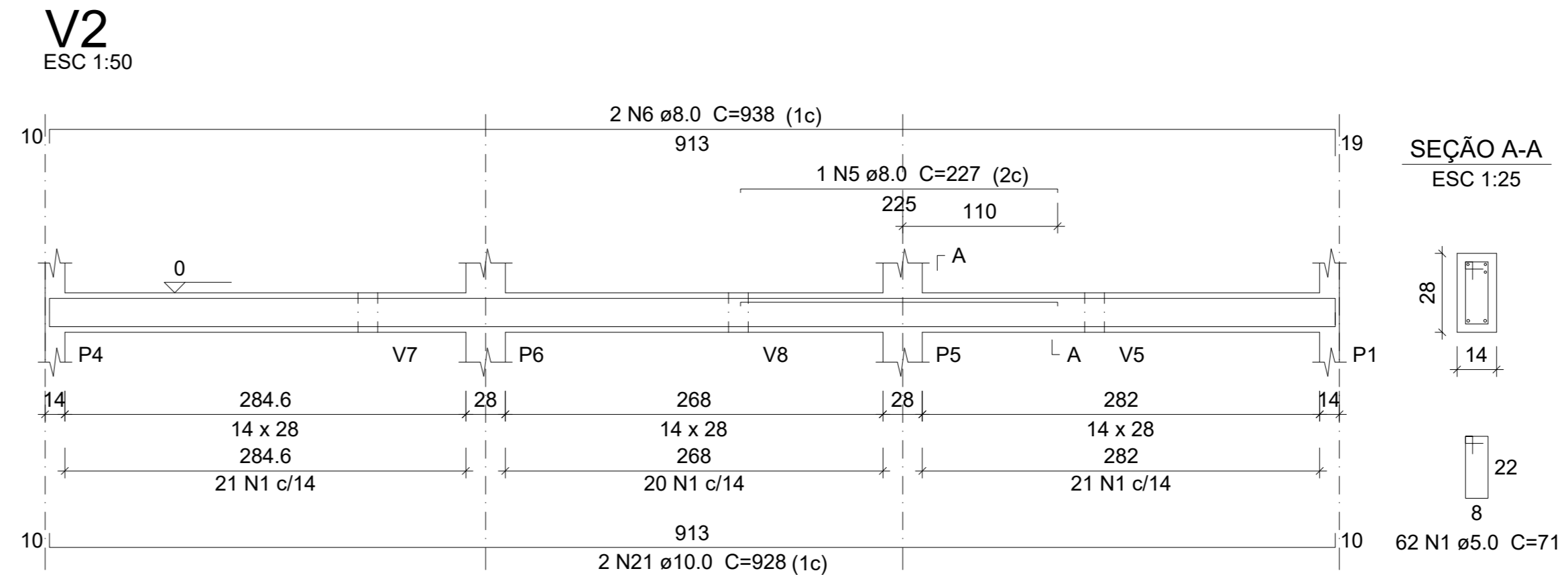
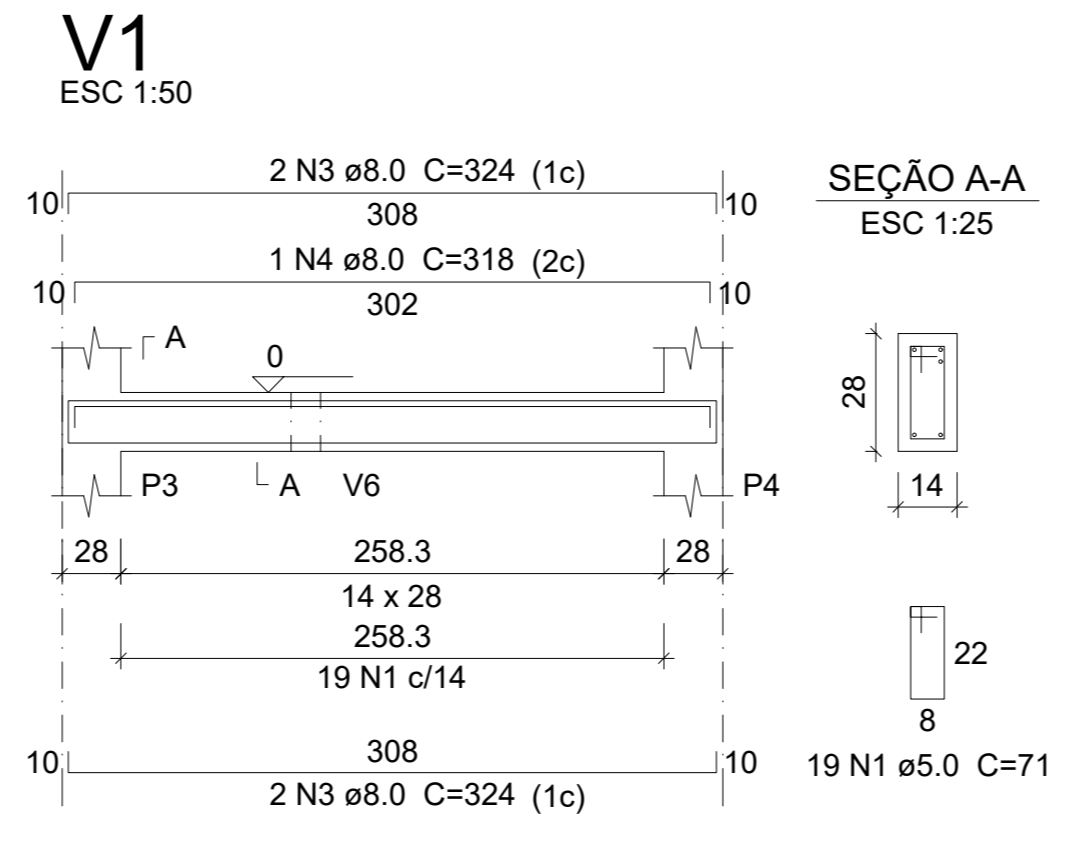
Escala: 1:50

Vigas		
Nome	Seção (cm)	Elevação (cm)
V1	14x28	0
V2	14x28	0
V3	14x28	0
V4	14x28	0
V5	14x28	0
V6	14x28	0
V7	14x28	0
V8	14x28	0
V9	14x28	0

Características dos materiais		
fk	Ecs	(kgf/cm²)
300	288384	

Dimensão máxima do agregado = 19 mm

Pilares		
Nome	Seção (cm)	Elevação (cm)
P1	14x28	0
P2	14x28	0
P3	14x28	0
P4	14x28	0
P5	14x28	0
P6	14x28	0
P7	14x28	0
P8	14x28	0
P9	14x28	0



Relação do aço

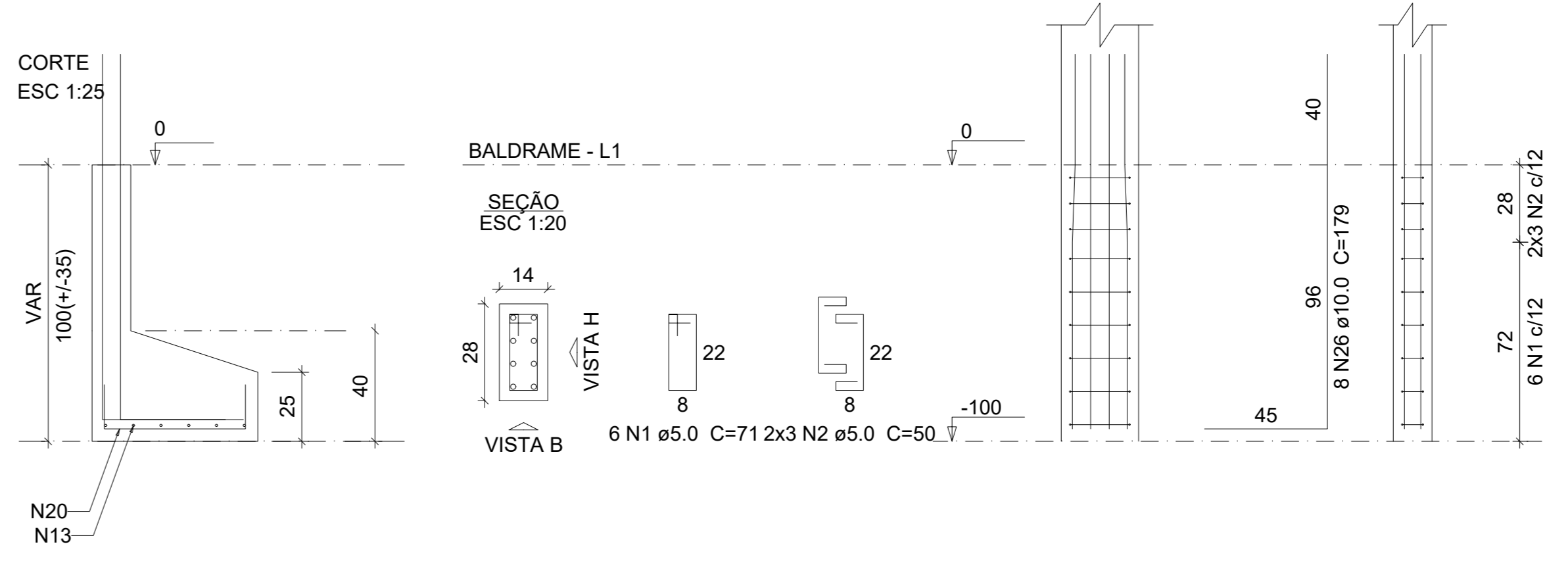
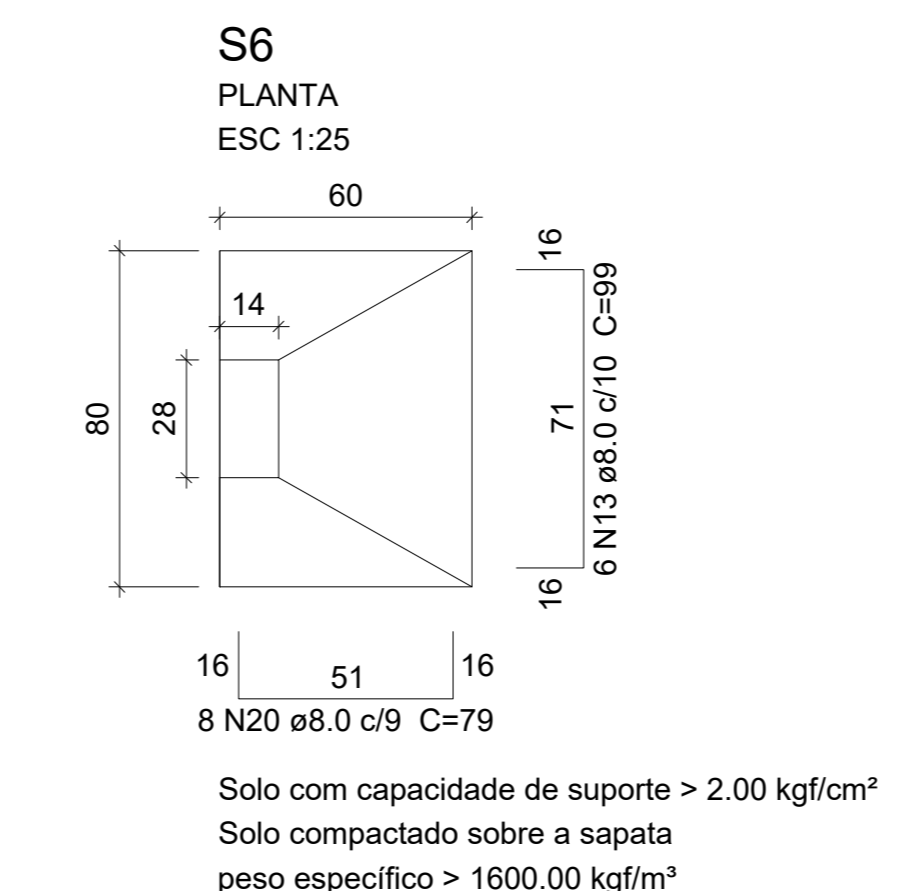
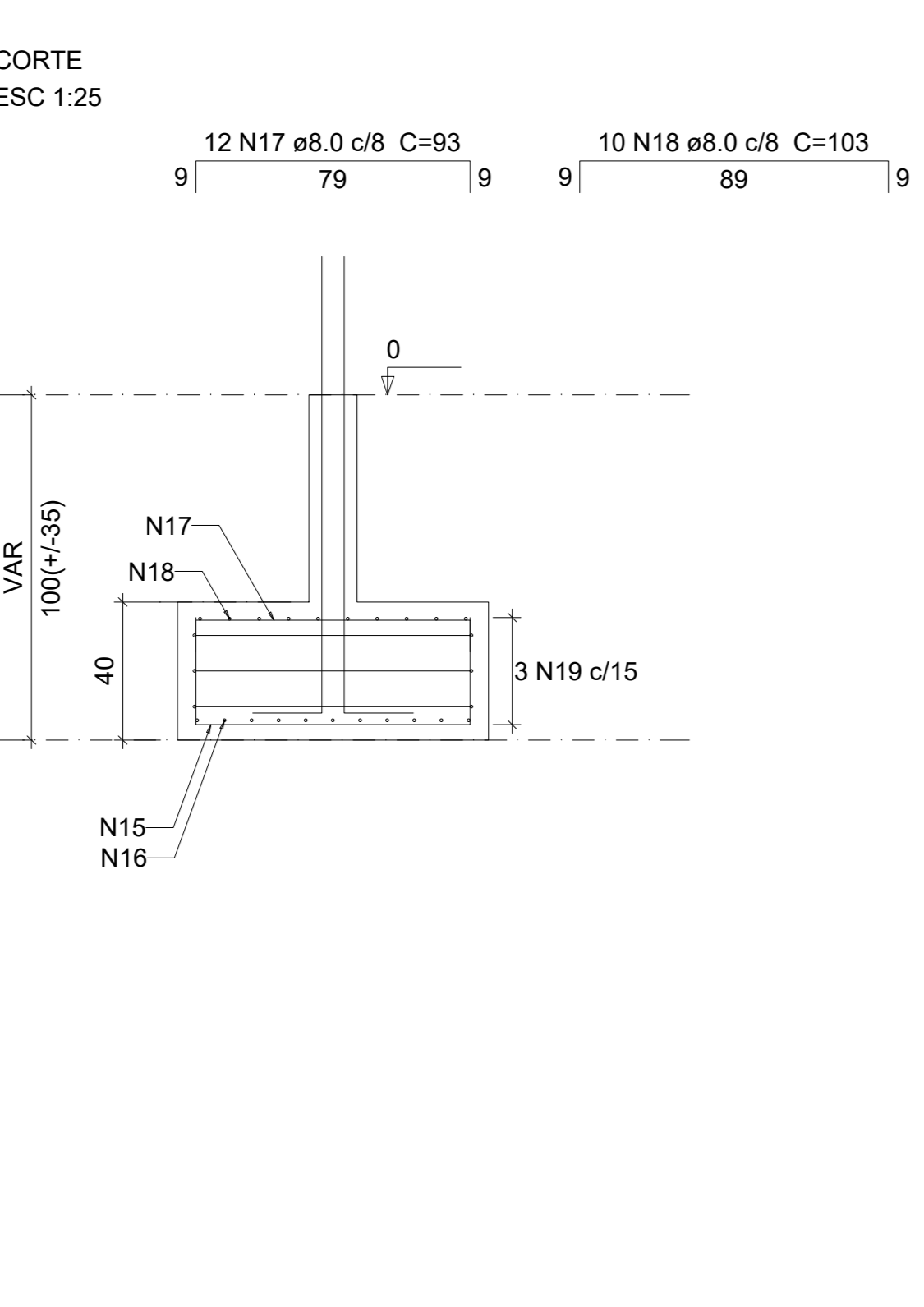
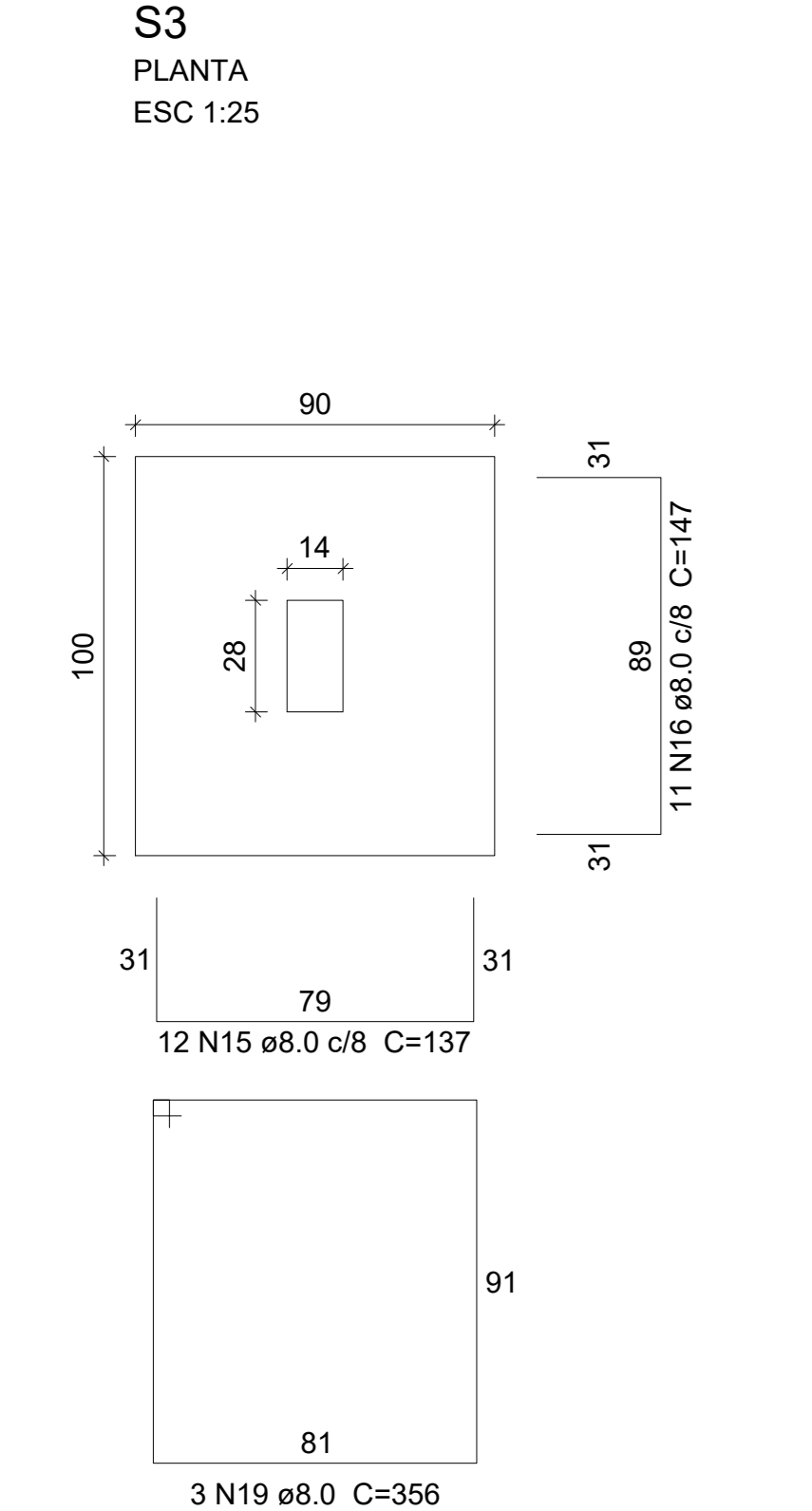
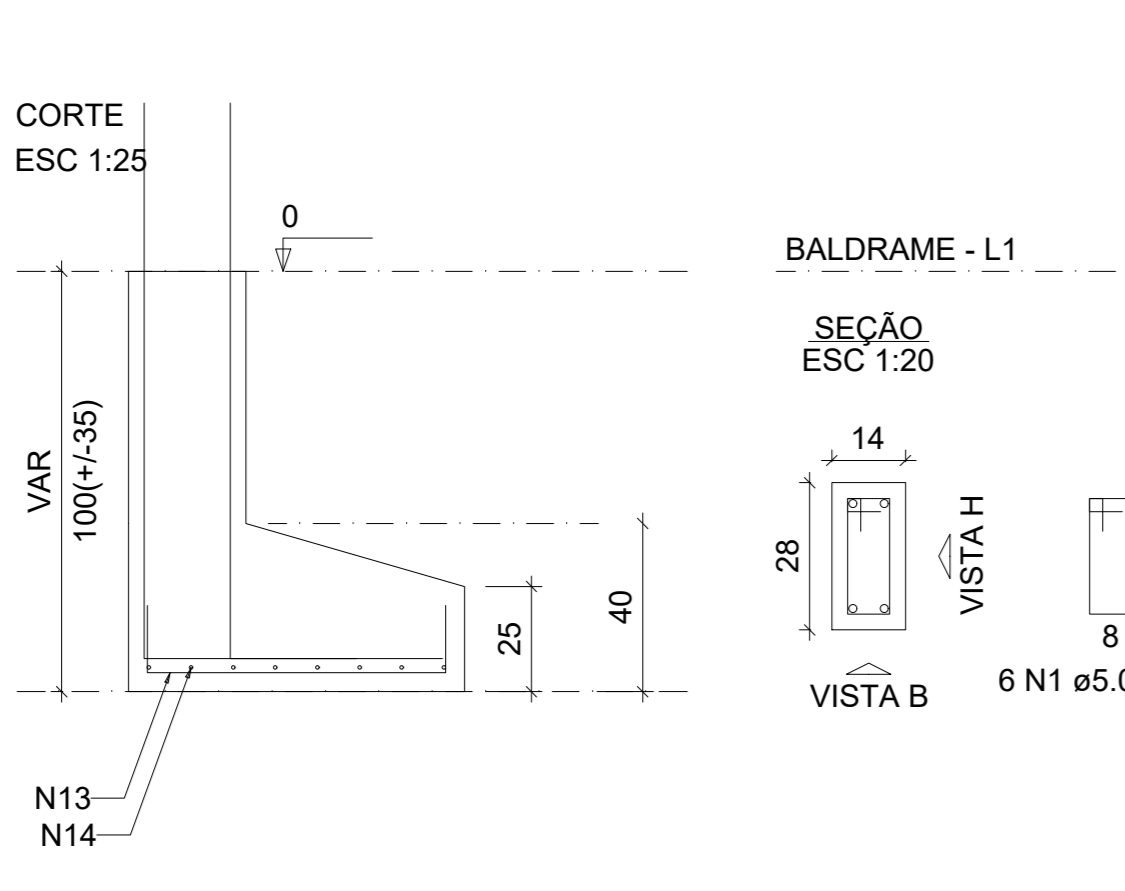
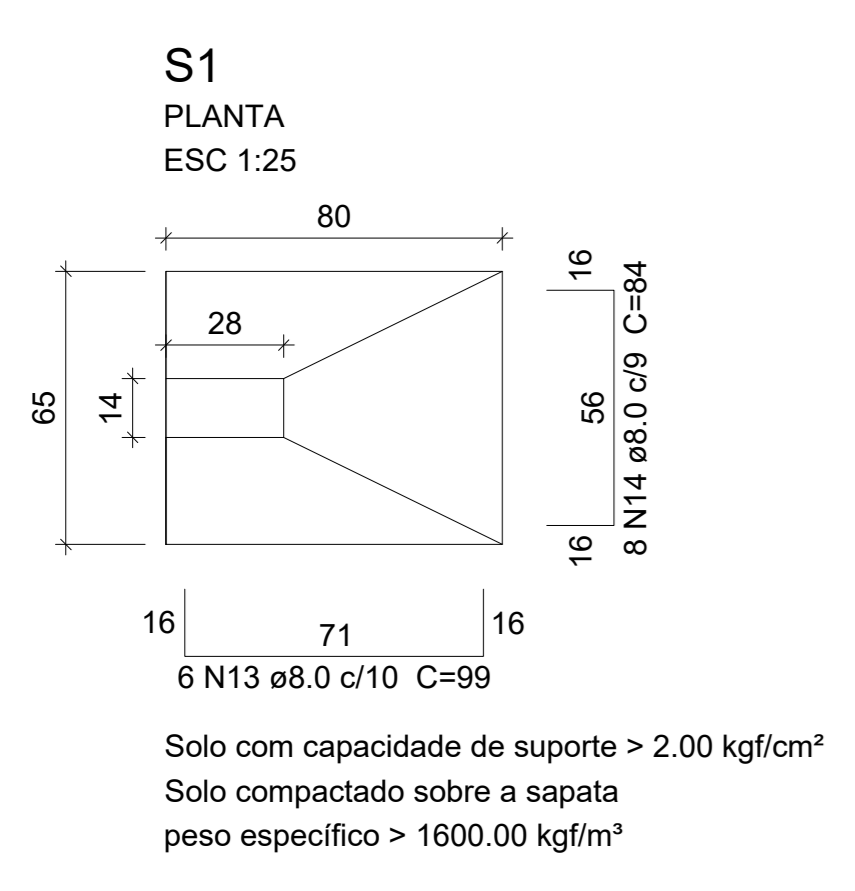
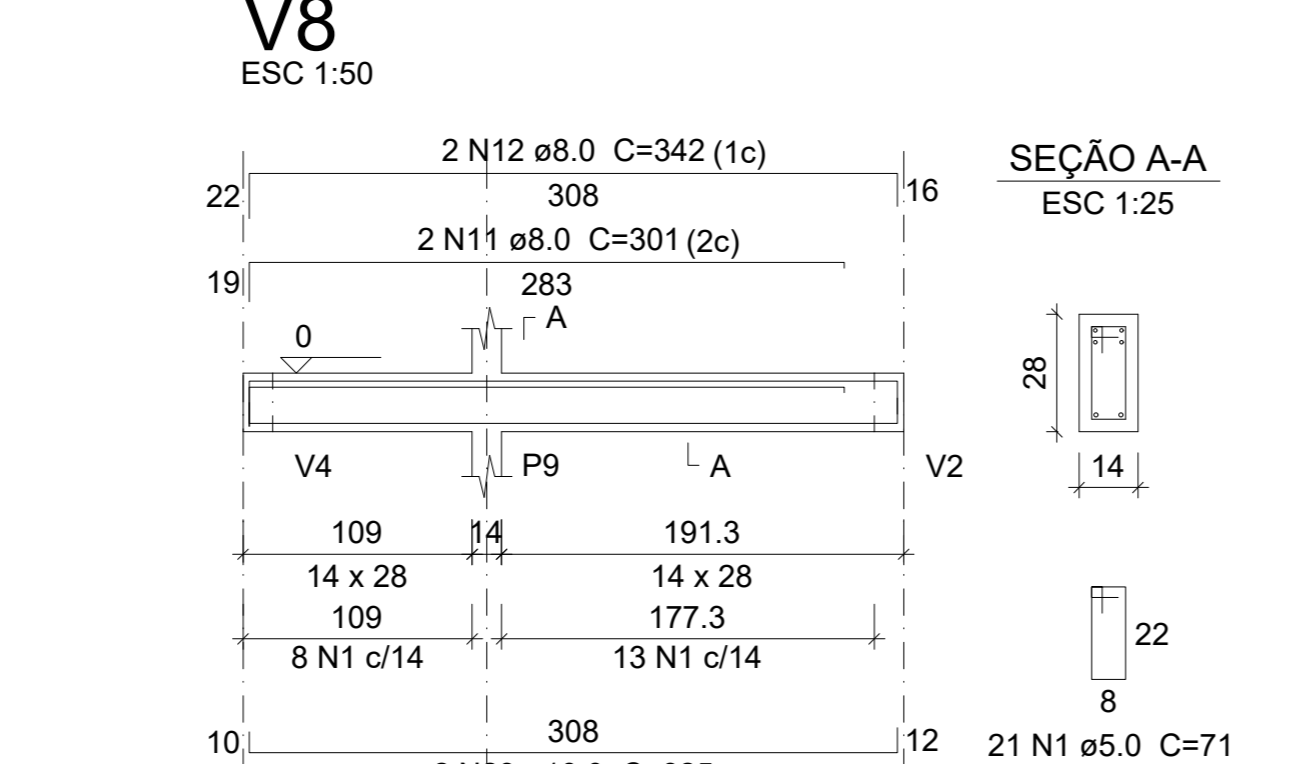
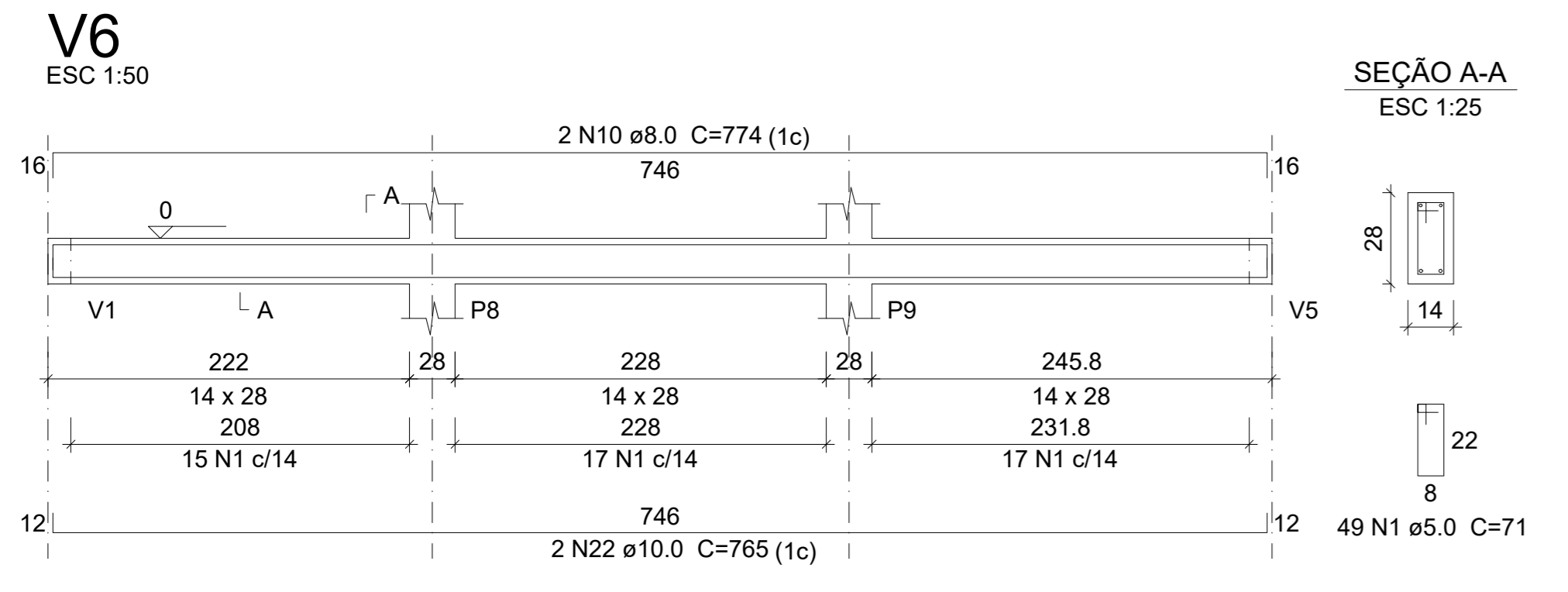
AÇO	N	DIAM (mm)	QUANT	C.UNIT (cm)	C.TOTAL (cm)
CA50	1	5.0	291	71	20661
CA50	2	5.0	18	50	900
CA50	3	8.0	10	324	3240
CA50	4	8.0	1	318	318
CA50	5	8.0	1	227	227
CA50	6	8.0	2	938	1876
CA50	7	8.0	1	175	175
CA50	8	8.0	2	937	1874
CA50	9	8.0	2	345	690
CA50	10	8.0	2	774	1548
CA50	11	8.0	4	301	1204
CA50	12	8.0	4	342	1368
CA50	13	8.0	12	99	1188
CA50	14	8.0	8	84	672
CA50	15	8.0	12	137	1644
CA50	16	8.0	11	147	1617
CA50	17	8.0	12	93	1116
CA50	18	8.0	10	103	1030
CA50	19	8.0	3	356	1068
CA50	20	8.0	8	79	632
CA50	21	10.0	4	928	3712
CA50	22	10.0	2	765	1530
CA50	23	10.0	4	325	1300
CA50	24	10.0	4	185	740
CA50	25	10.0	6	154	924
CA50	26	10.0	8	179	1432

Resumo do aço

AÇO	DIAM (mm)	C.TOTAL (m)	PESO + 10% (kg)
CA50	8.0	214.9	93.3
CA50	10.0	96.4	65.4
CA60	5.0	215.7	36.6

PESO TOTAL (kg)
CA50 158.6
CA60 36.6

Volume de concreto (C-30) = 2.23 m³
Área de forma = 31 m²



TÍTULO: PROJETO ESTRUTURAL	FORMATO: A-0
CONSTRUÇÃO DE BANHEIRO PUBLICO	FOLHA: 02/03
ENDEREÇO: Praça Padre Joaquim Castro,S/N CAPUTIRA/MG	LOTE: QUADRA:
OBSERVAÇÃO:	
PROPRIETÁRIO: _____ PREFEITURA MUNICIPAL DE CAPUTIRA	CNP J:18.385.138/0001-11
R.T.: _____ JOSÉ GILSON MOREIRA - ENGº CIVIL	CREA MG: 247.171/D
ESCALA: INDICADA	ÁREA DO TERRENO: _____ ÁREA DE CONSTRUÇÃO: 29,03 M2
DATA: 06/2026	DESENHO: _____