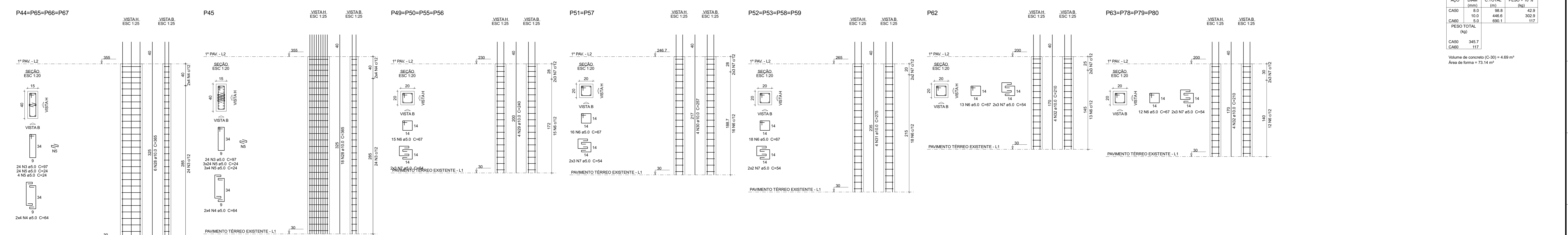


Relação do aço

ACAO	N	DIAM (mm)	QUANT	C.UNIT (cm)	C.TOTAL (cm)
CA60	1	5.0	249	83	20687
CA60	2	5.0	18	87	1566
CA60	3	5.0	120	97	11640
CA60	4	5.0	40	164	6560
CA60	5	5.0	196	24	4704
CA60	6	5.0	255	67	17185
CA60	7	5.0	150	54	8100
CA60	8	5.0	1	172	172
CA60	9	5.0	2	259	518
CA60	10	5.0	4	366	1464
CA60	11	5.0	4	366	1464
CA60	12	5.0	2	147	294
CA60	13	5.0	4	292	1168
CA60	14	5.0	2	299	598
CA60	15	5.0	2	148	296
CA60	16	5.0	4	291	1164
CA60	17	5.0	2	148	296
CA60	18	5.0	4	503	2012
CA60	19	5.0	2	477	954
CA60	20	10.0	4	341	1364
CA60	21	10.0	4	341	1364
CA60	22	10.0	2	122	244
CA60	23	10.0	4	267	1068
CA60	24	10.0	4	242	968
CA60	25	10.0	2	123	246
CA60	26	10.0	4	266	1064
CA60	27	10.0	4	477	1908
CA60	28	10.0	42	365	15330
CA60	29	10.0	16	240	3840
CA60	30	10.0	8	257	2056
CA60	31	10.0	16	275	4400
CA60	32	10.0	20	210	4200
CA60	33	10.0	8	224	1792
CA60	34	10.0	16	140	2240
CA60	35	10.0	8	174	1392
CA60	36	10.0	80	80	6400

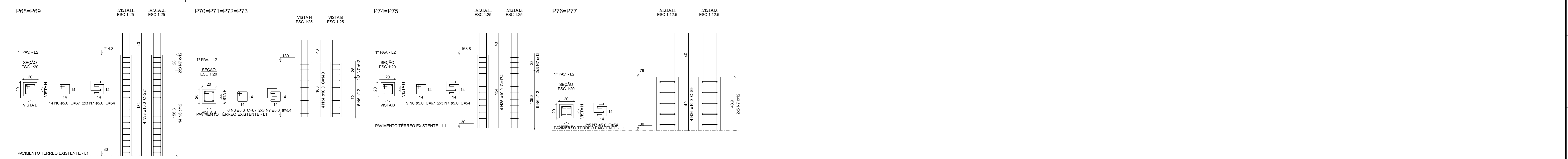


Resumo do aço

ACAO	DIAM (mm)	C.TOTAL (m)	PESO = 10% (kg)
CA60	5.0	38.8	42.3
CA60	10.0	448.6	302.9
CA60	5.0	690.1	117

PESO TOTAL (kg): 446.9
 CA60: 345.7
 CA60: 117

Volume de concreto (C-30) = 4.69 m³
 Área de forma = 73.14 m²



Nome: **ESCOLA MUNICIPAL INÊS ARAÚJO DUTRA**

Proprietário: **JOSE GILSON MOREIRA** / **PREFEITURA MUNICIPAL DE CAPUTINA**

Projeto: **PROJETO ESTRUTURAL**

Conteúdo desta prancha

10

19/7/2011