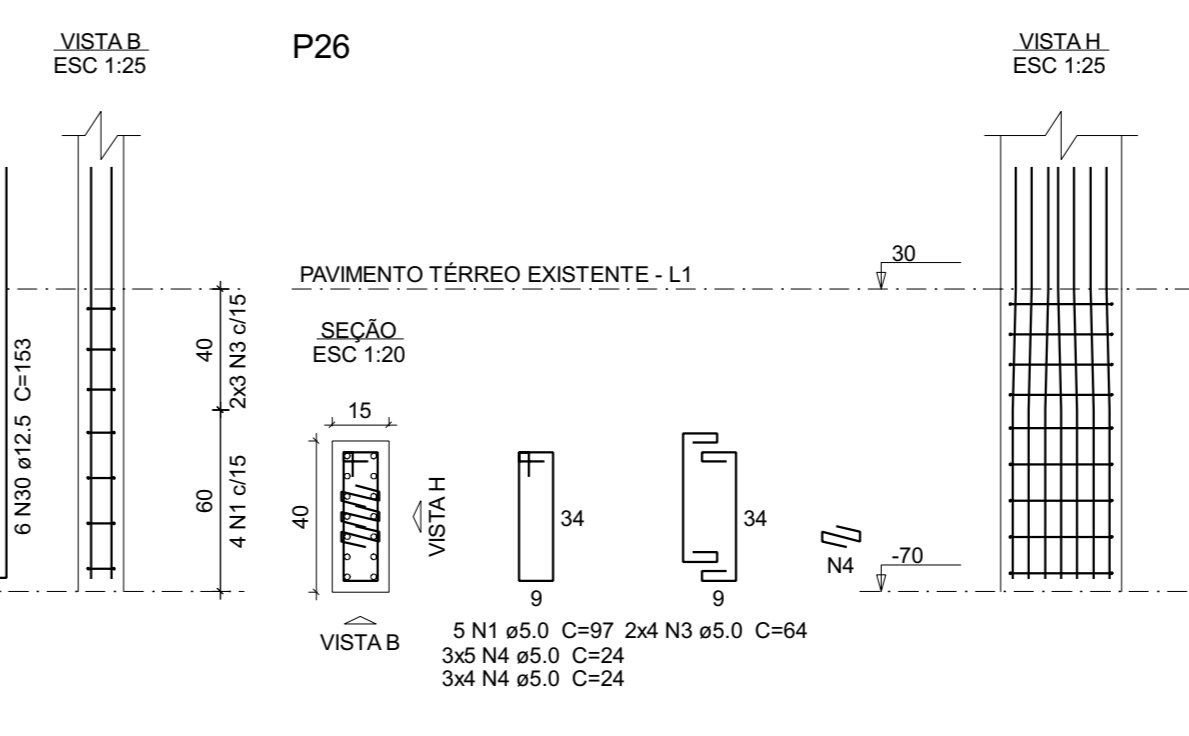
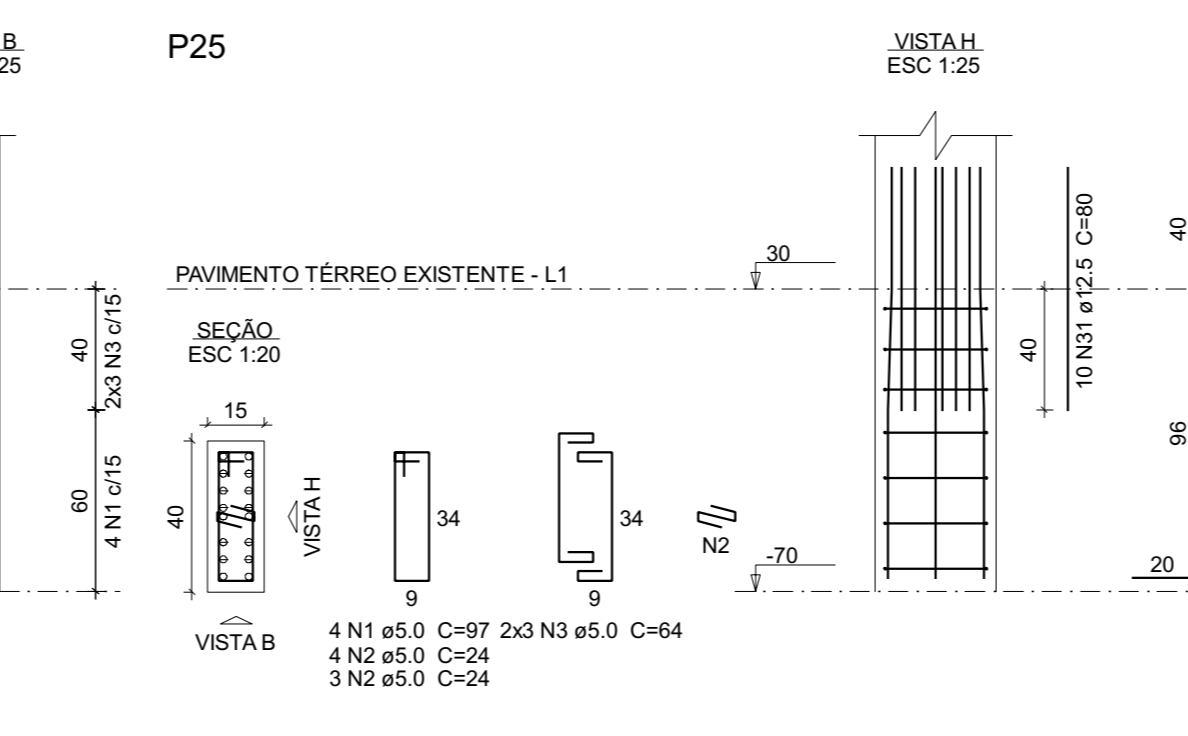
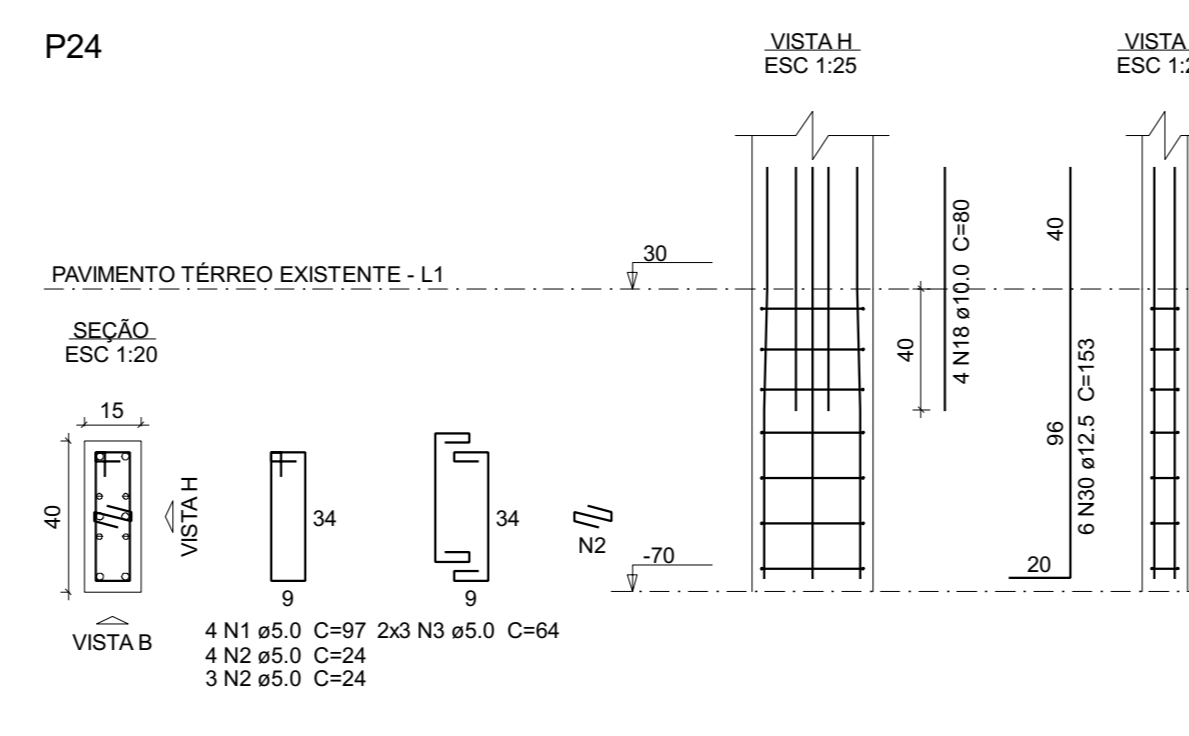
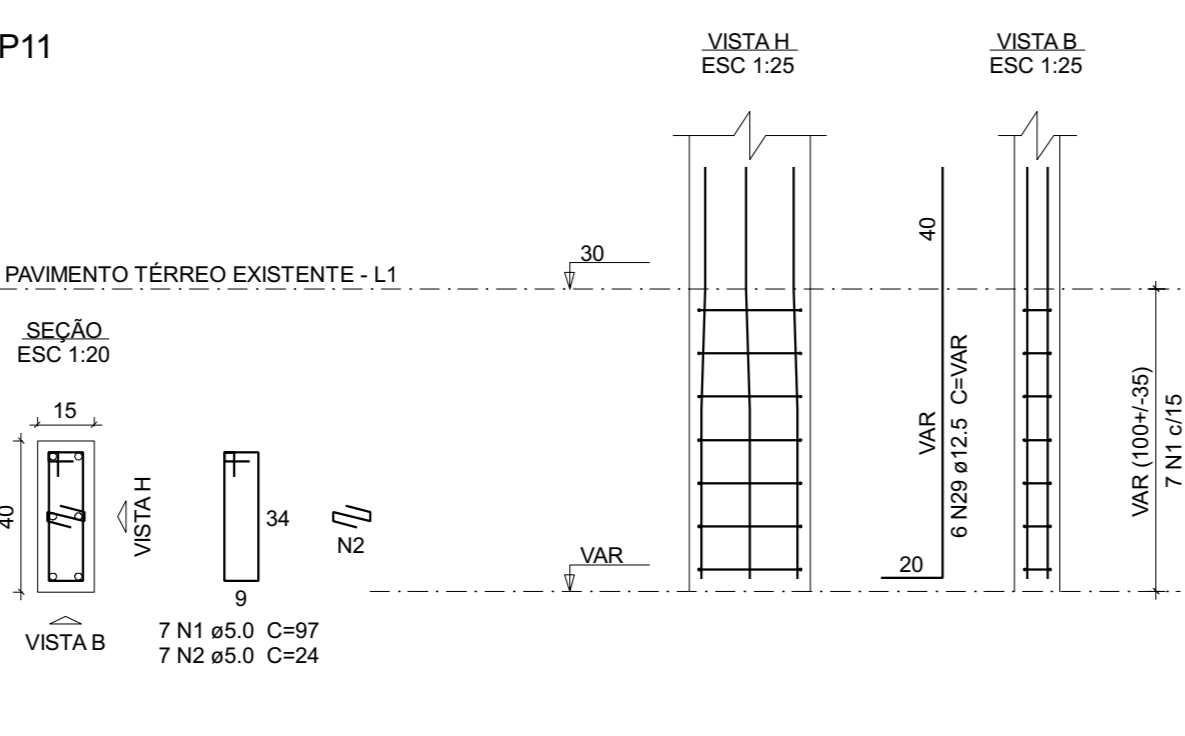
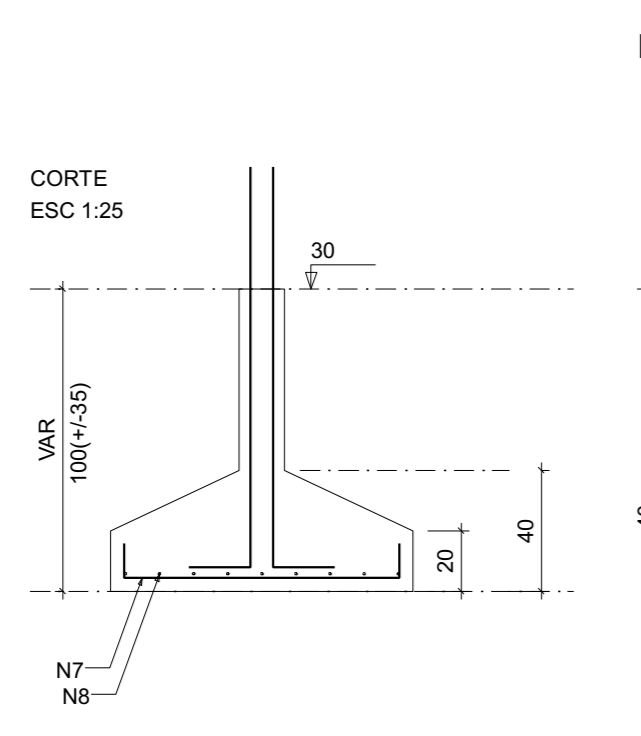


Solo com capacidade de suporte > 2.00 kg/cm<sup>2</sup>  
 Solo compactado sobre a sapata  
 peso específico > 1600.00 kg/m<sup>3</sup>



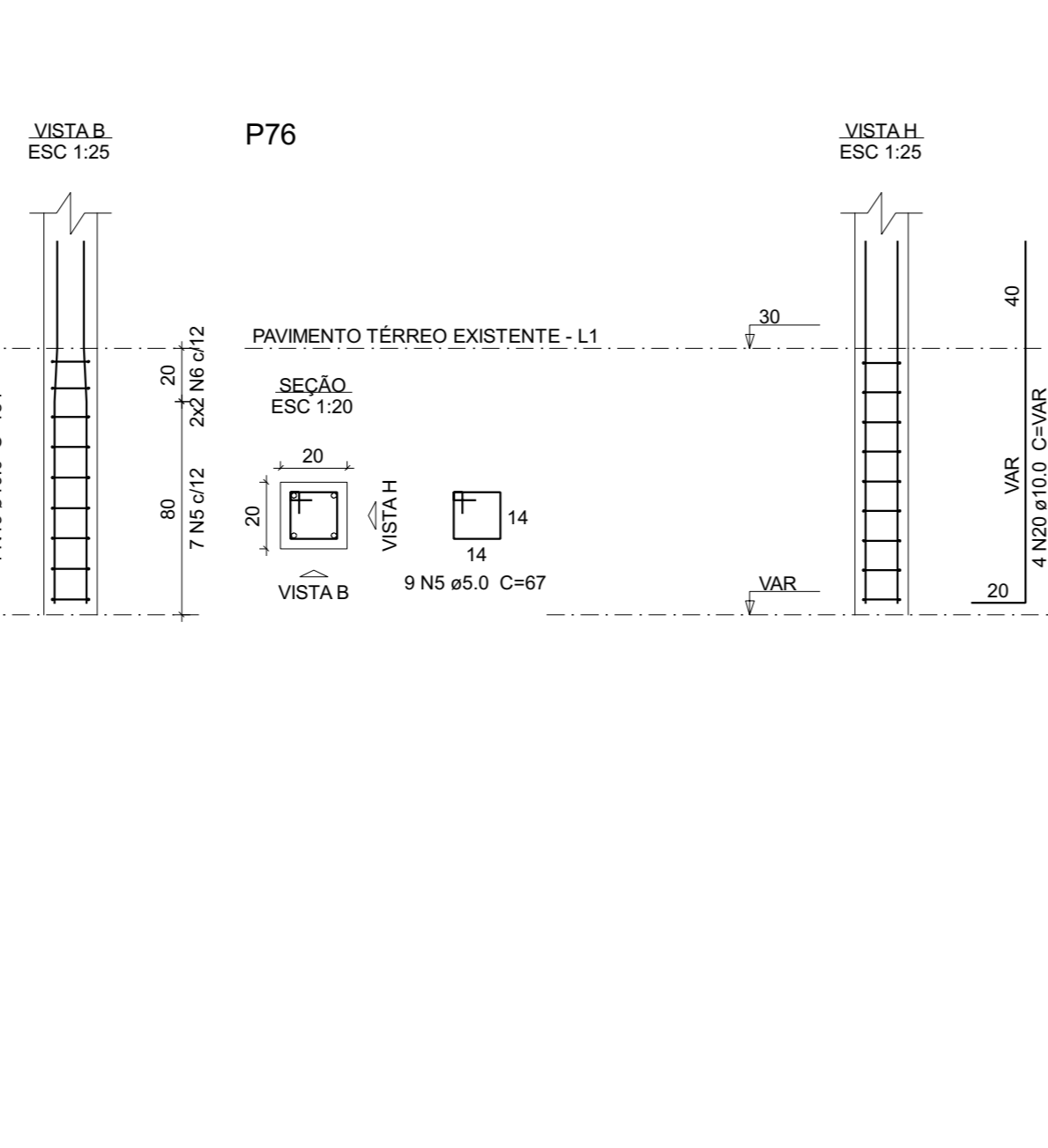
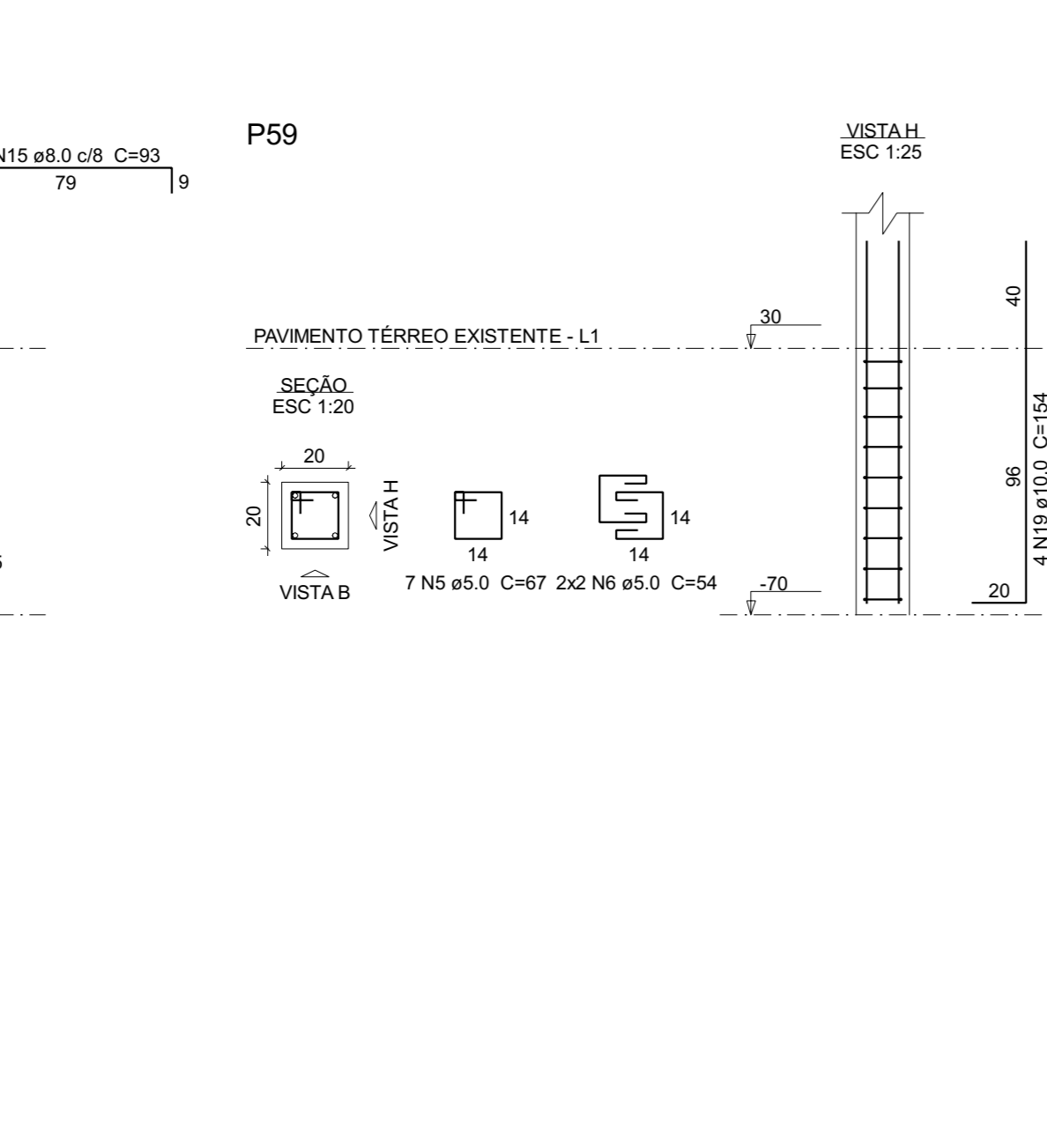
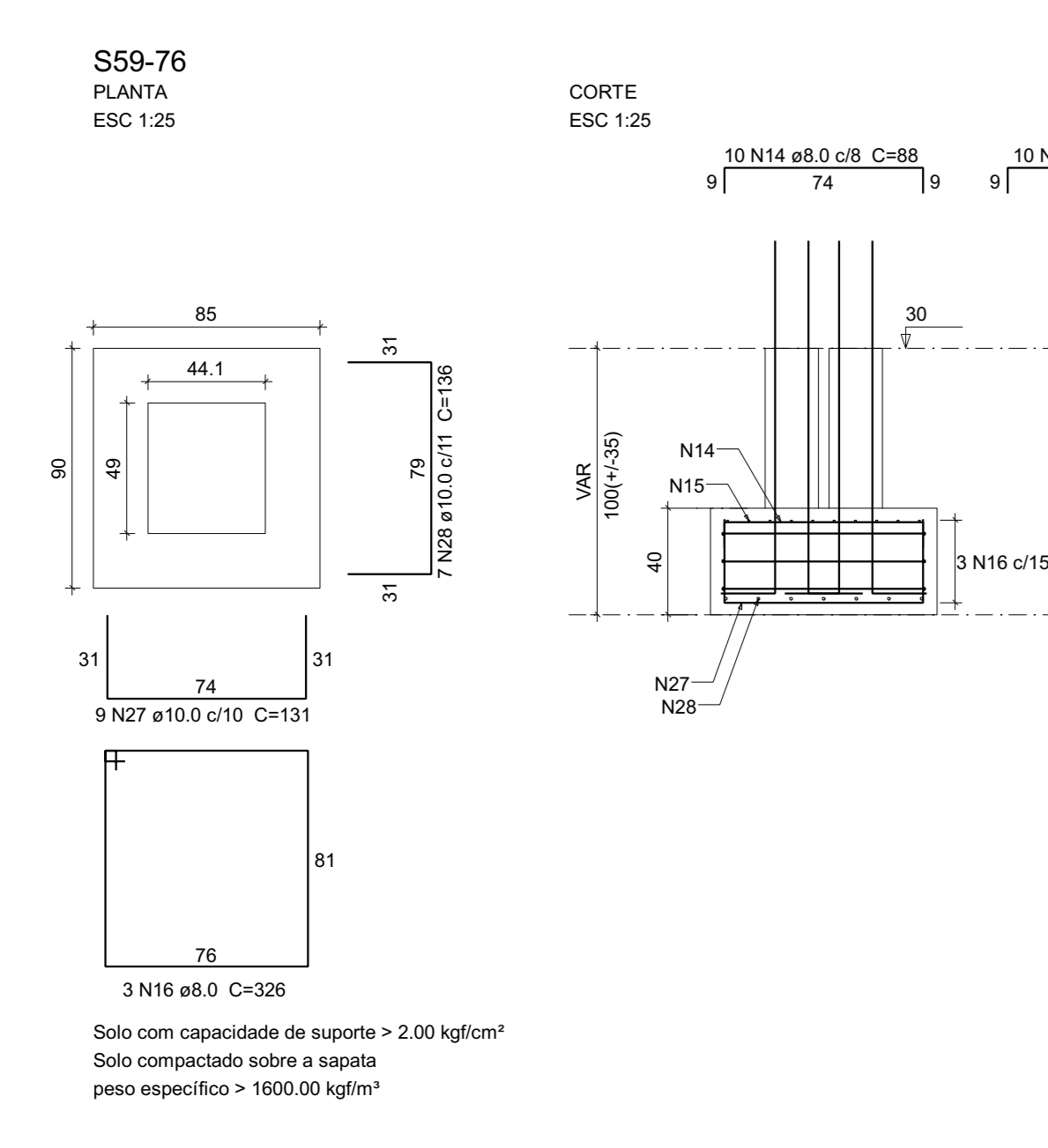
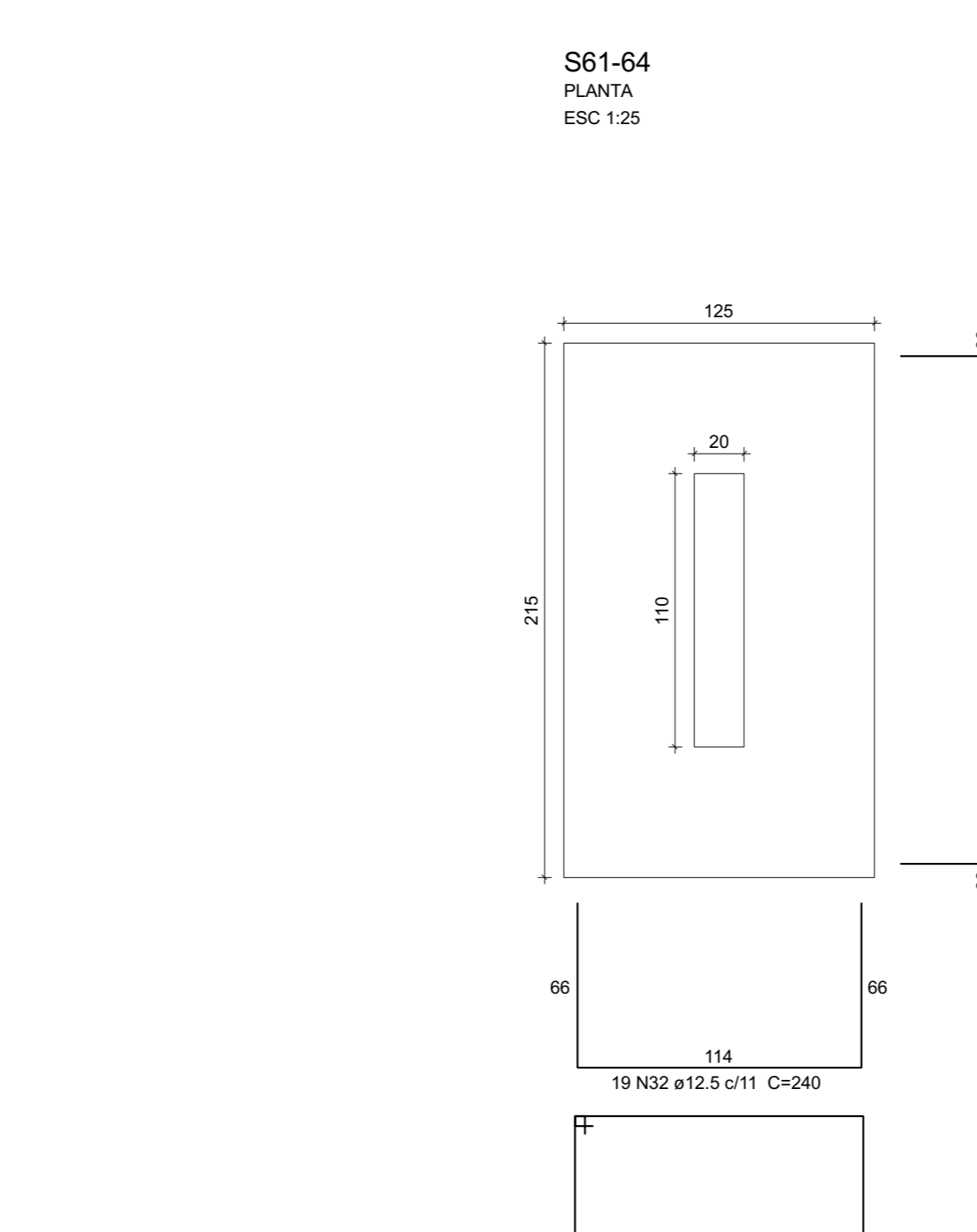
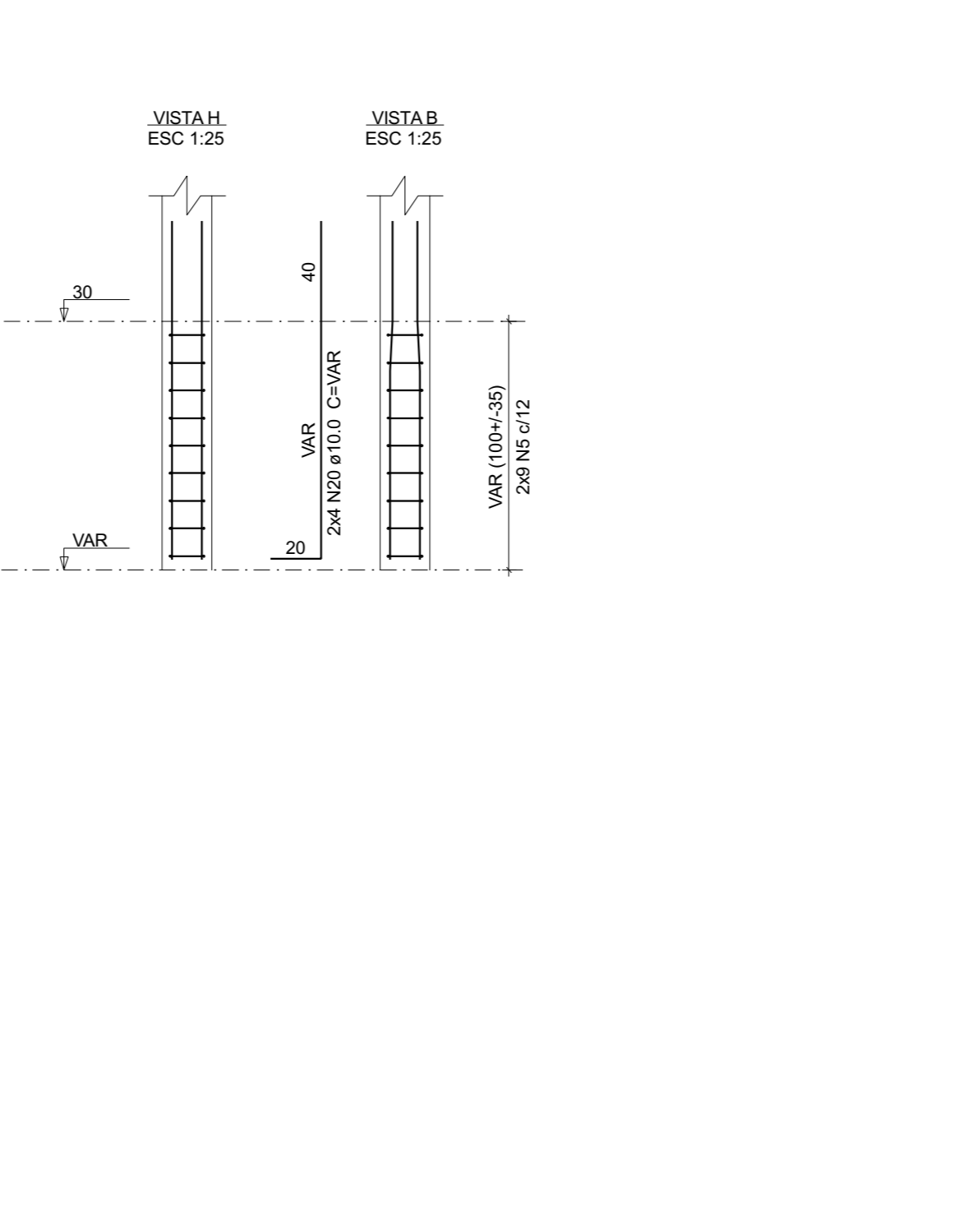
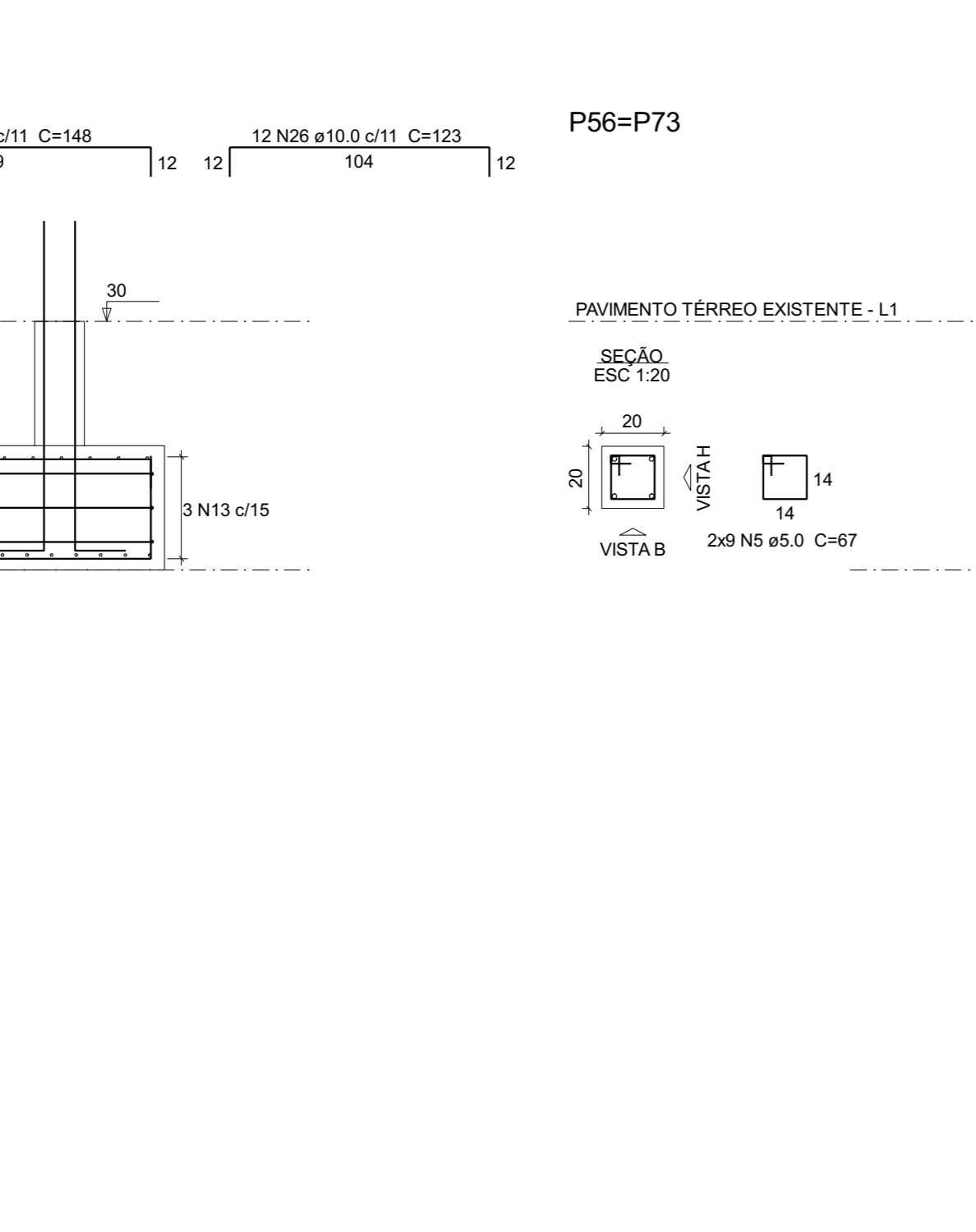
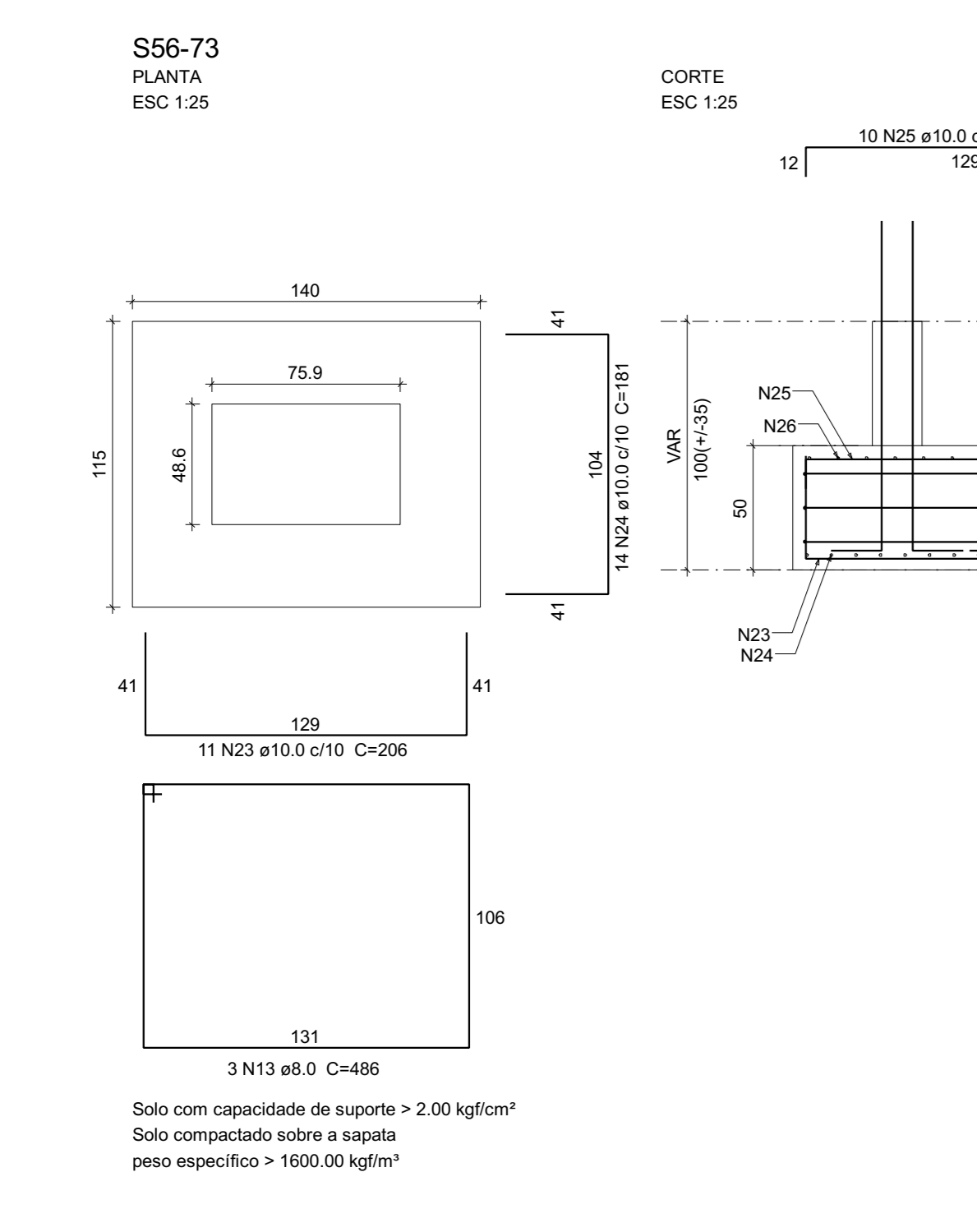
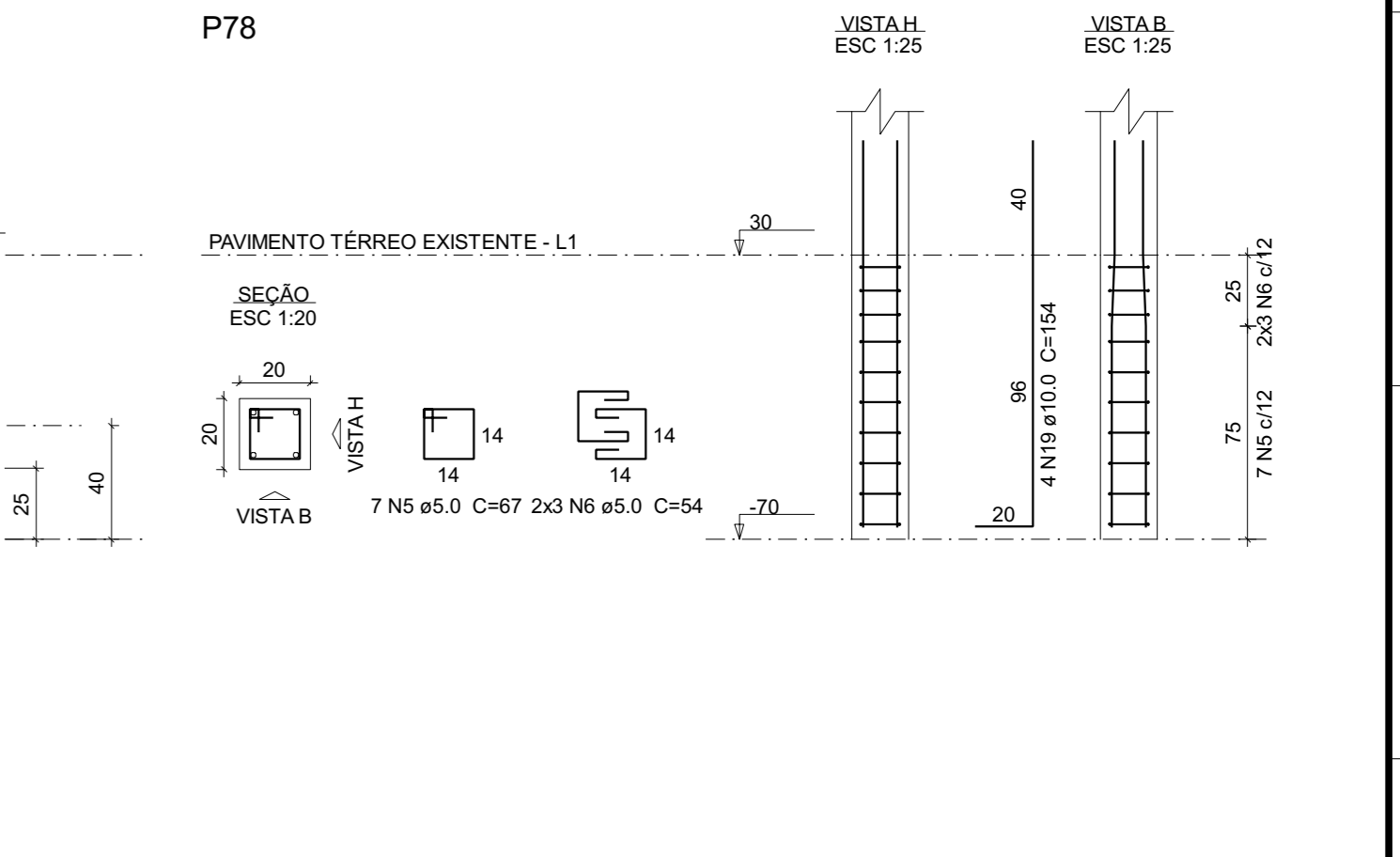
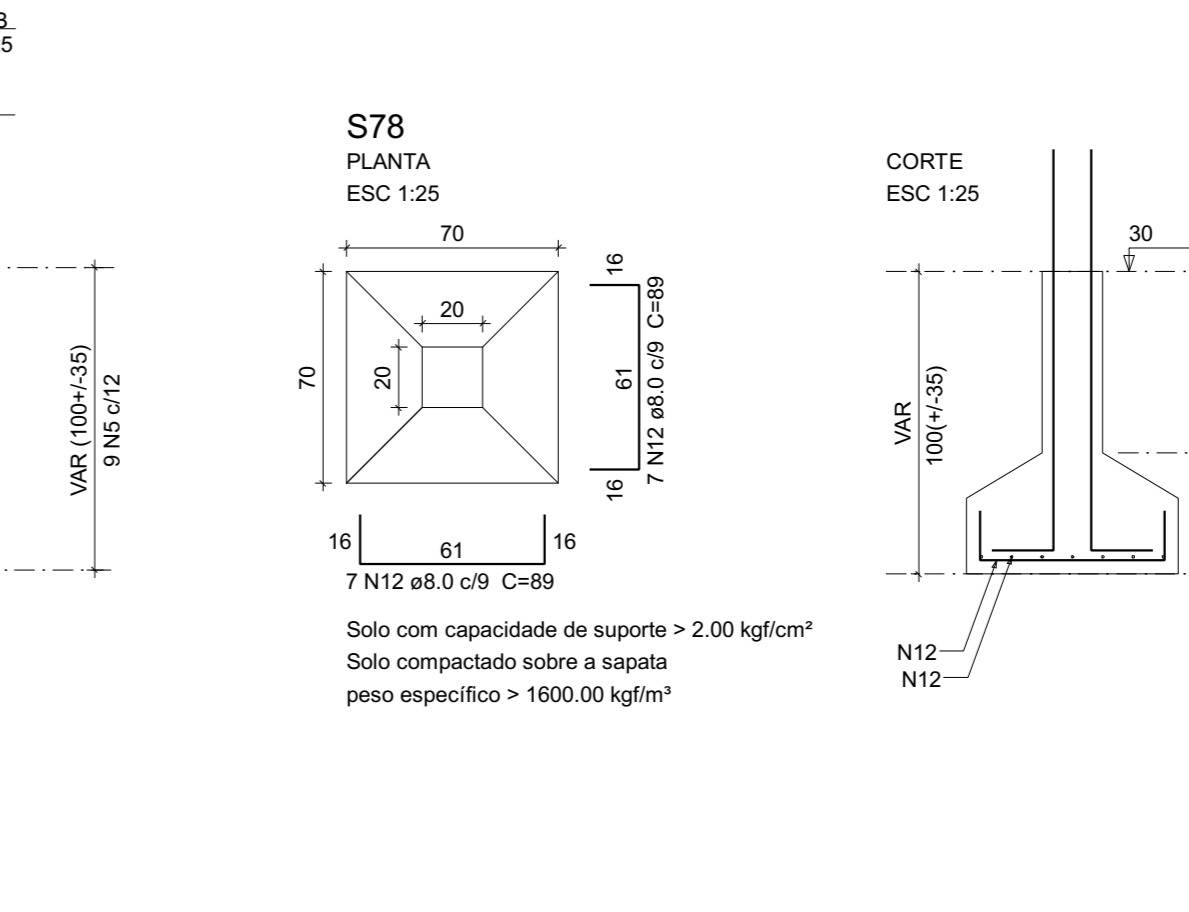
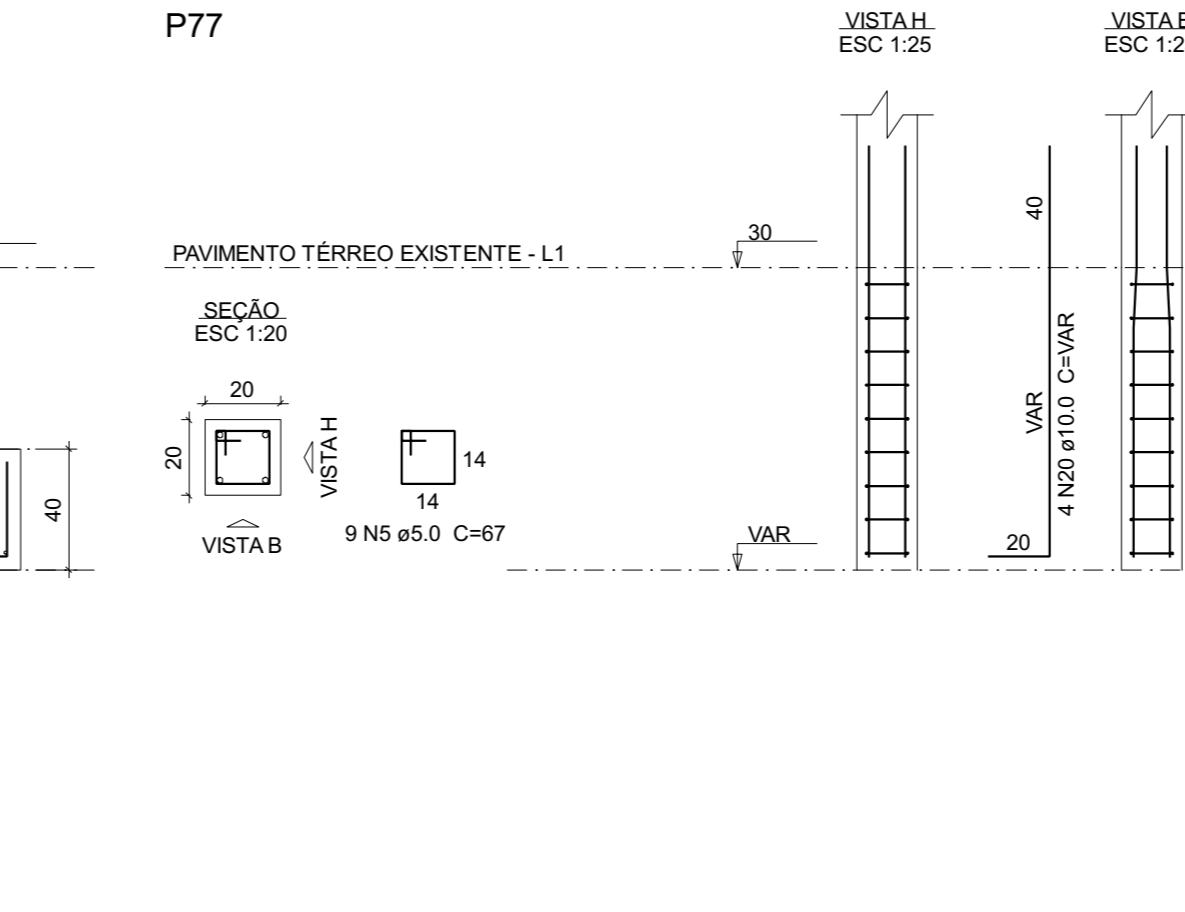
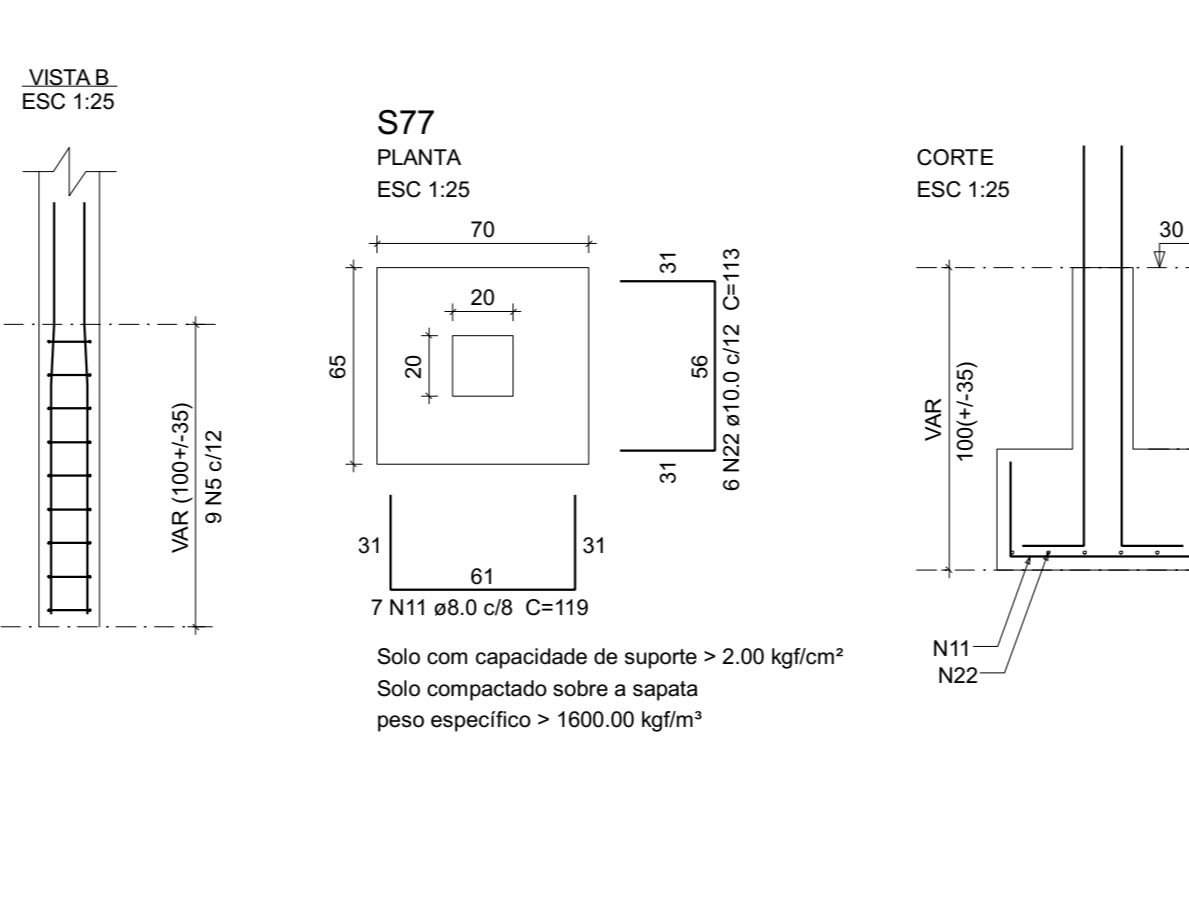
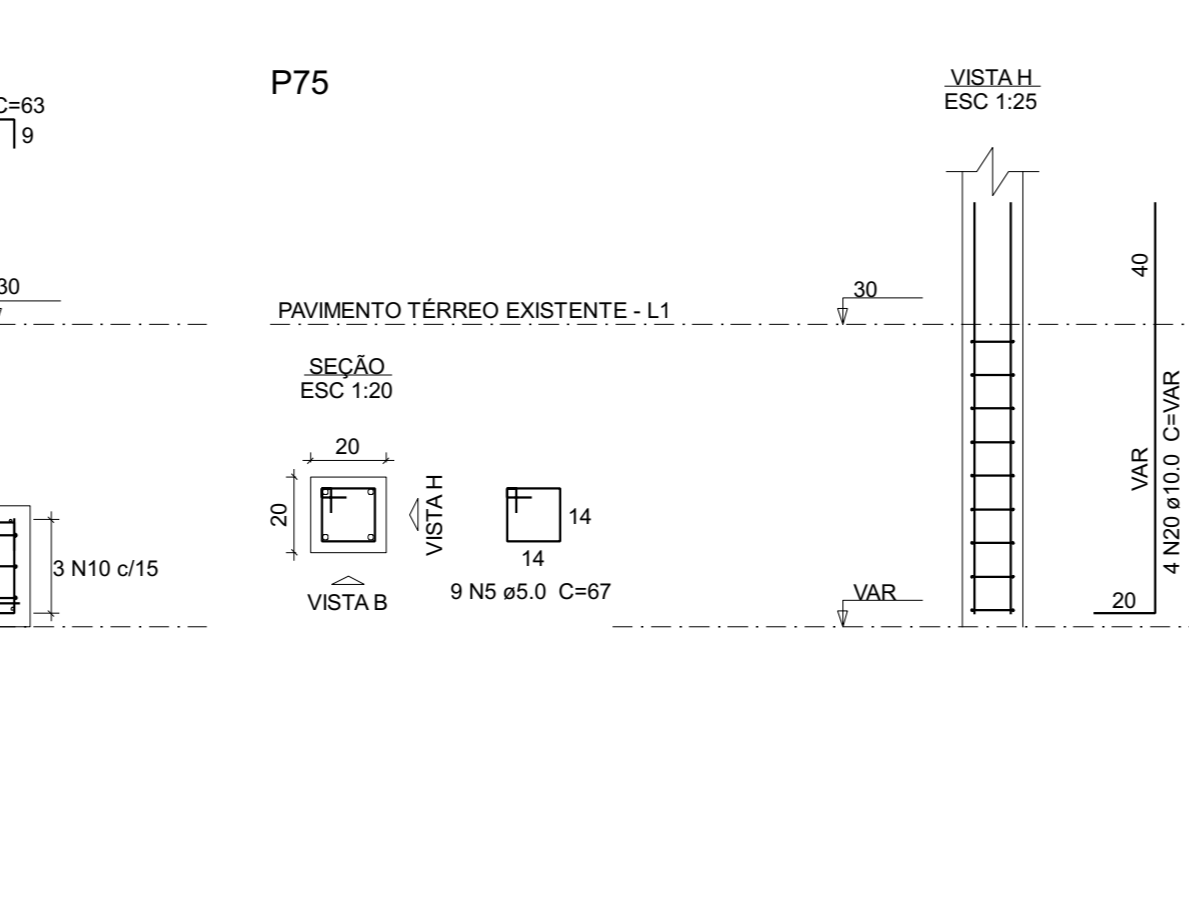
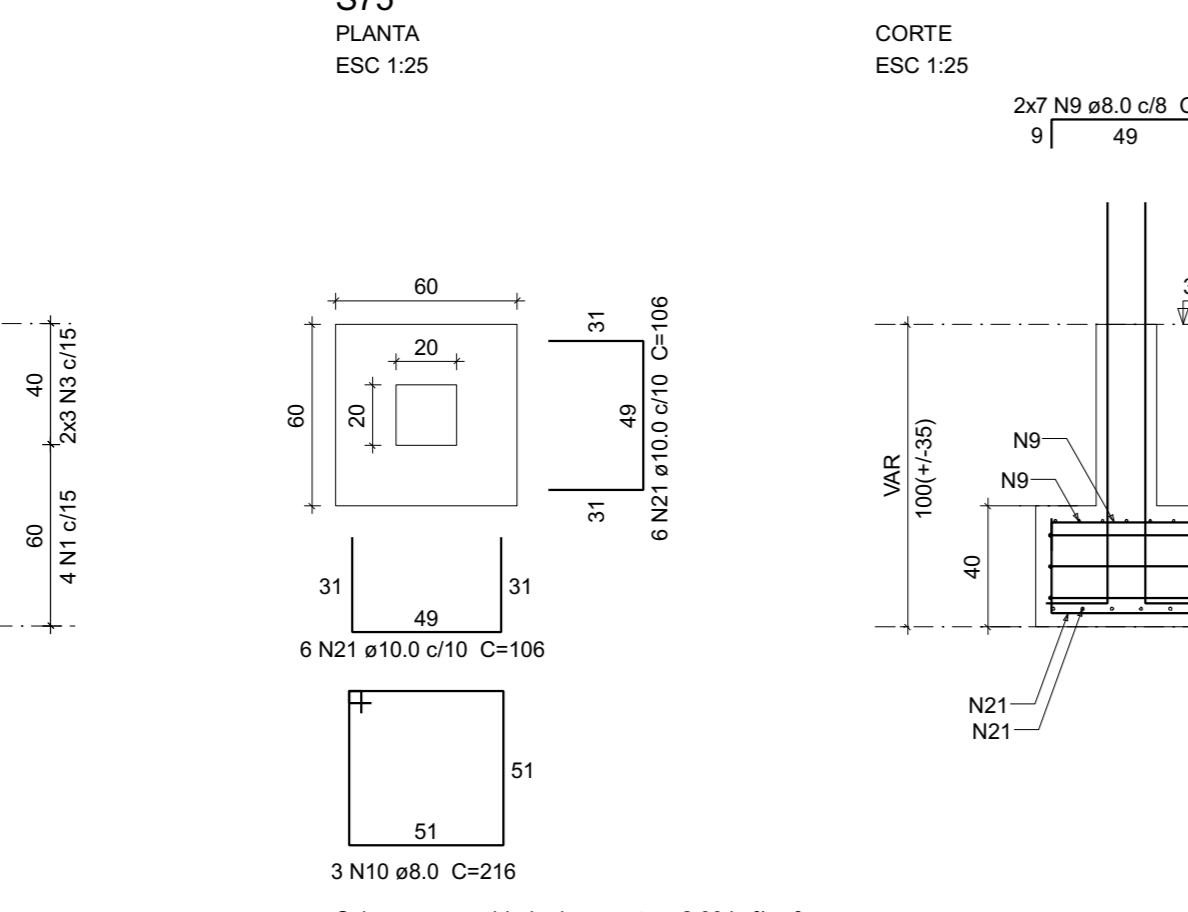
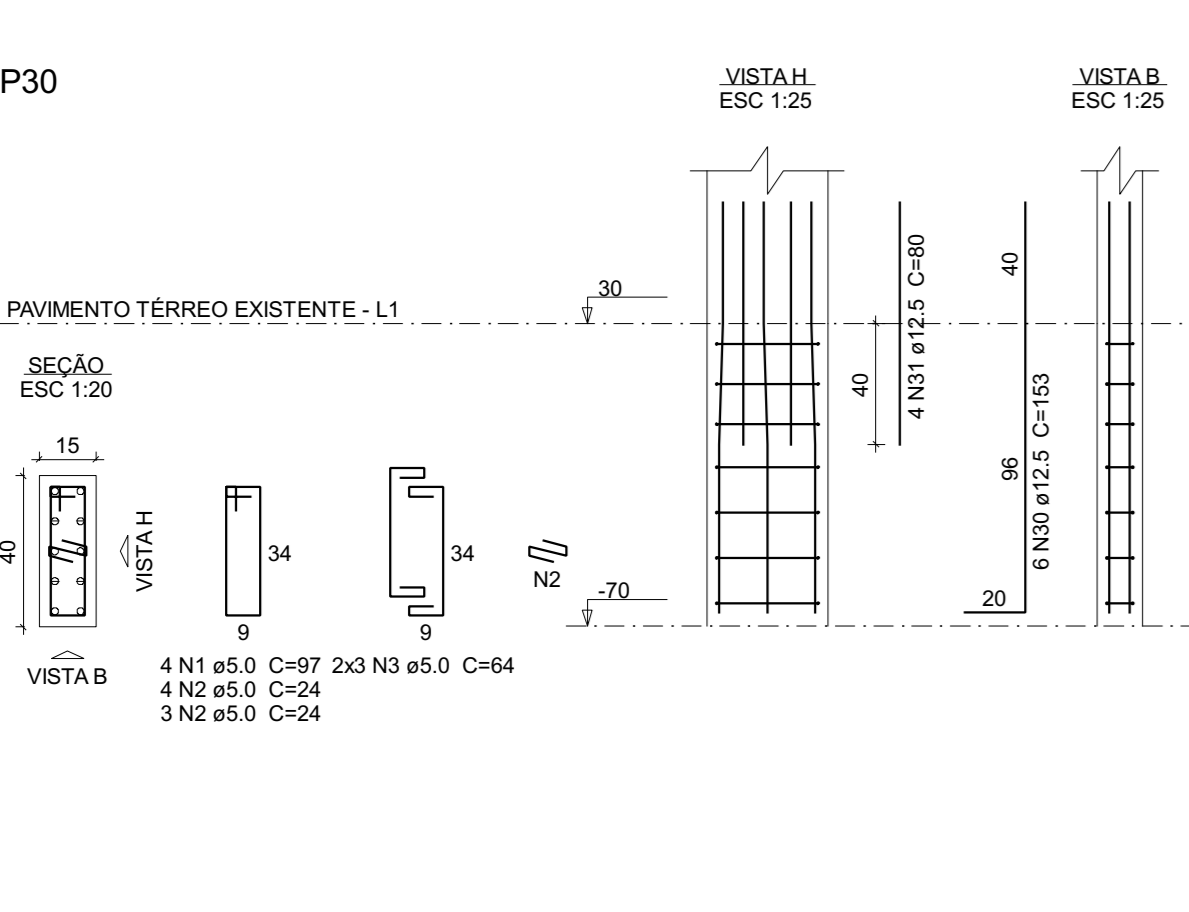
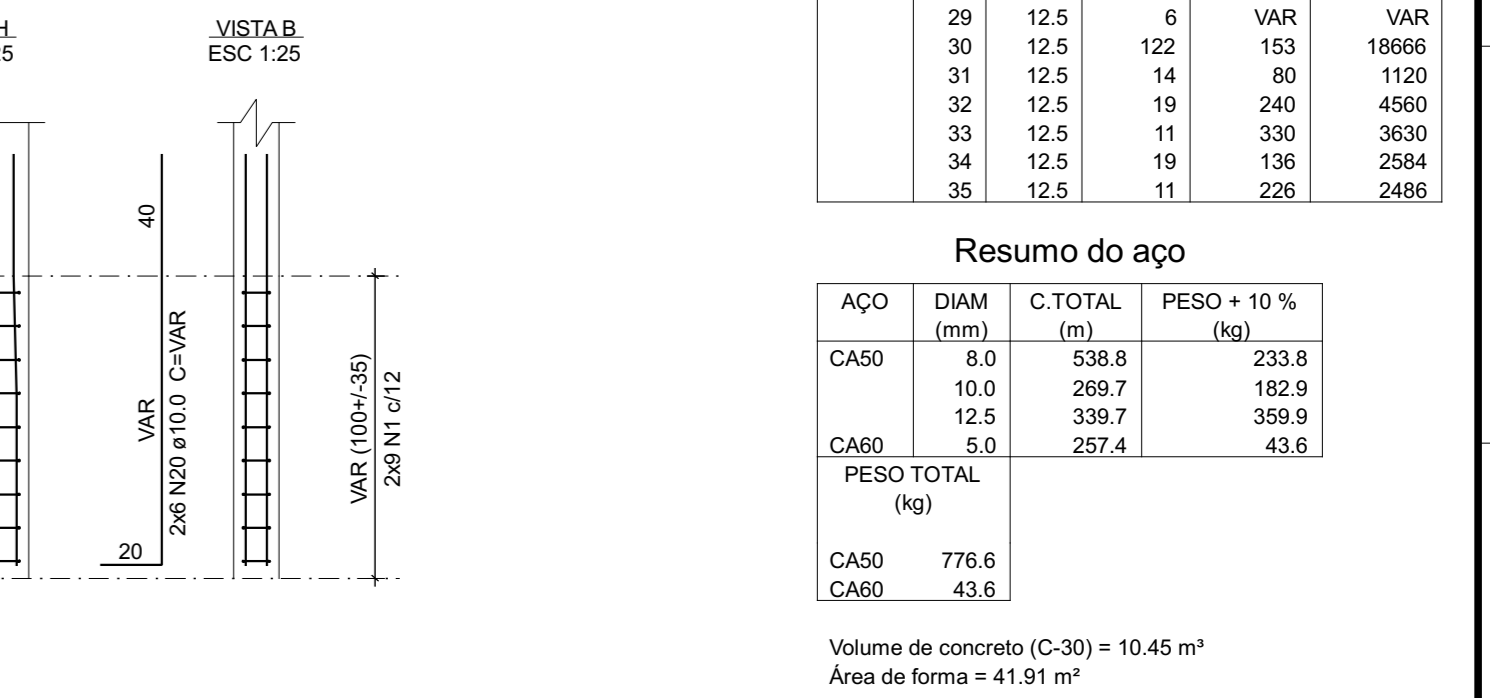
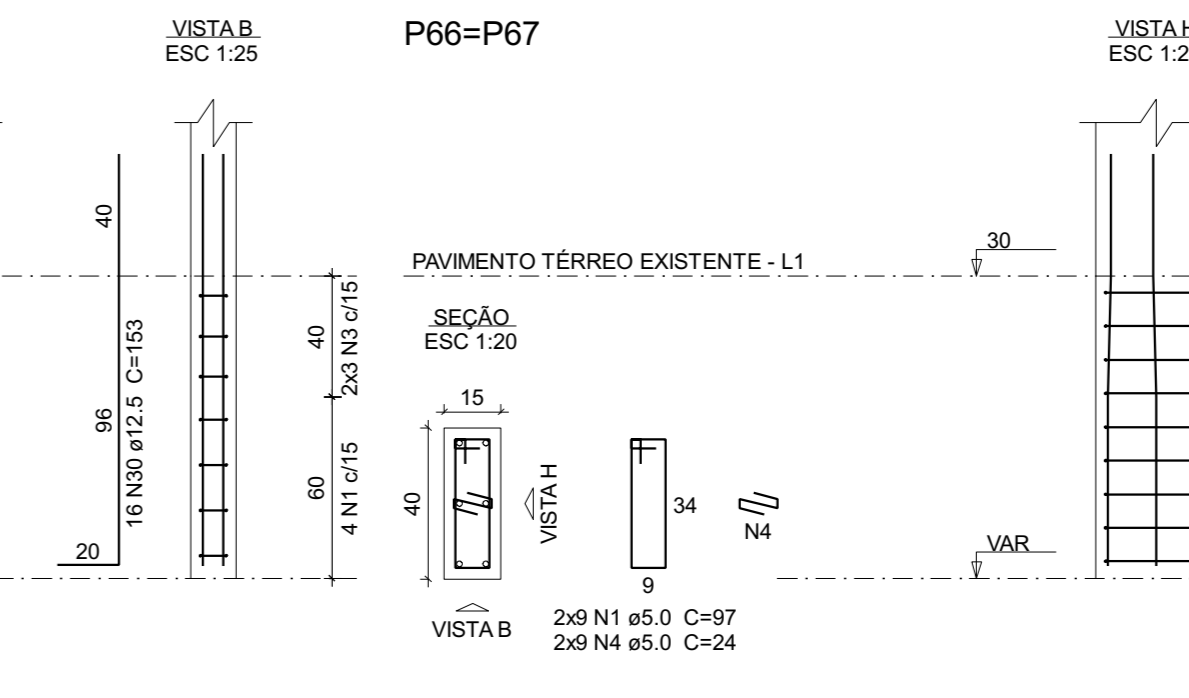
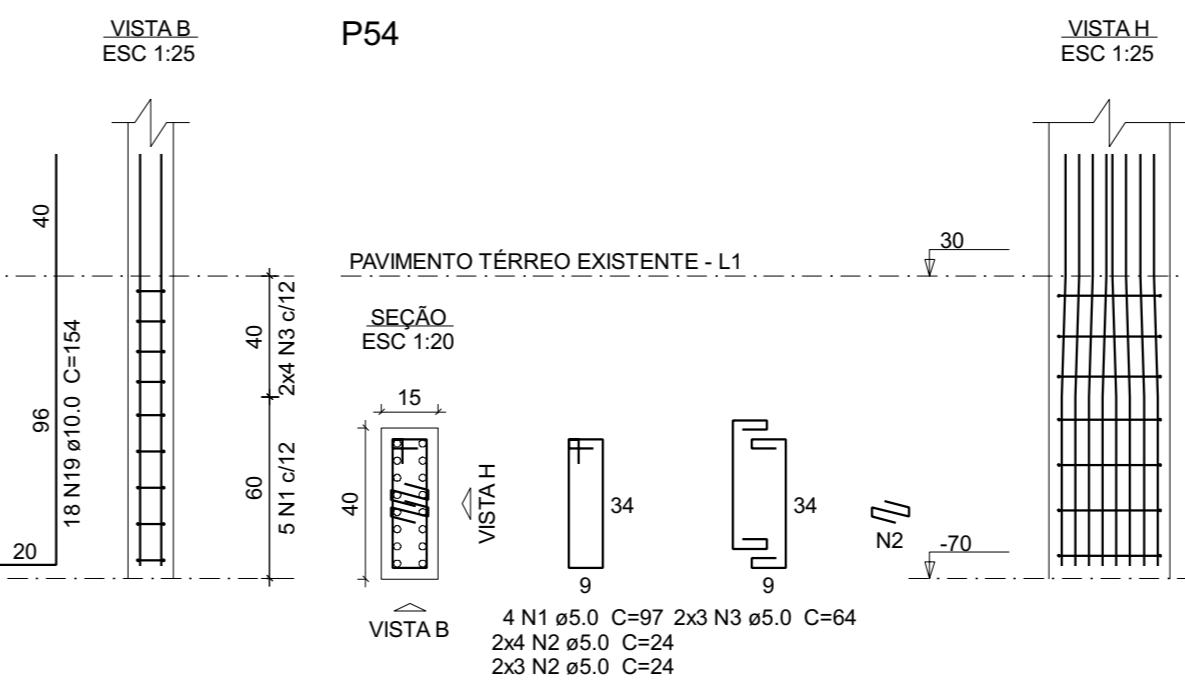
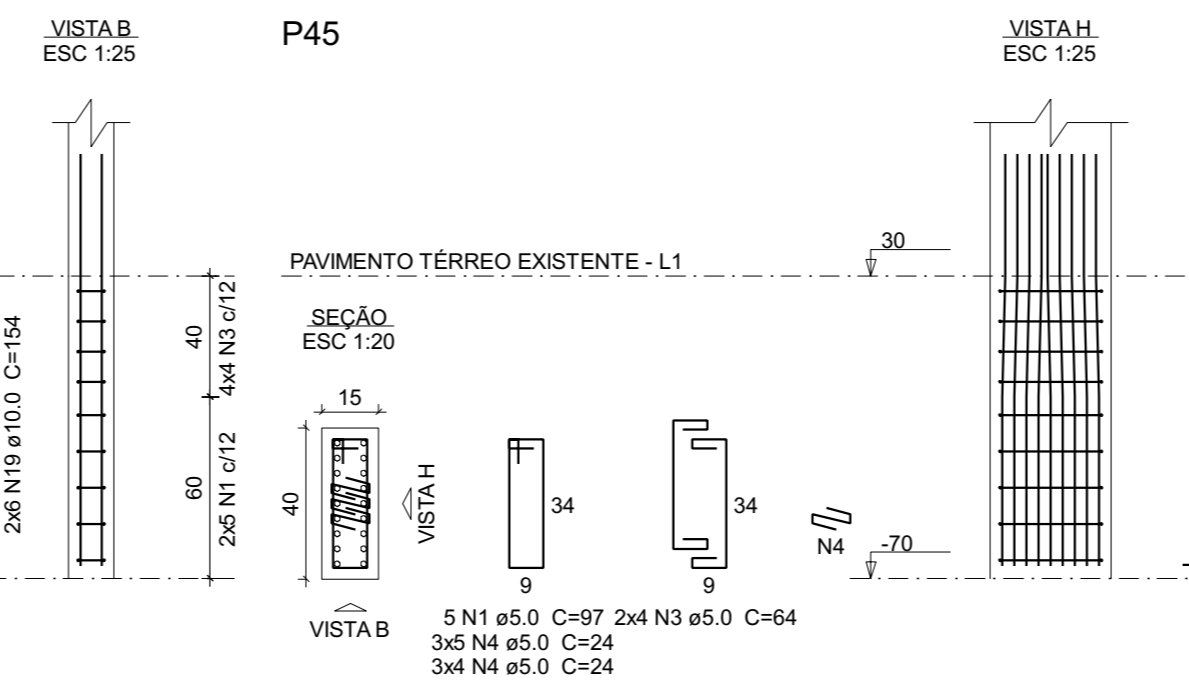
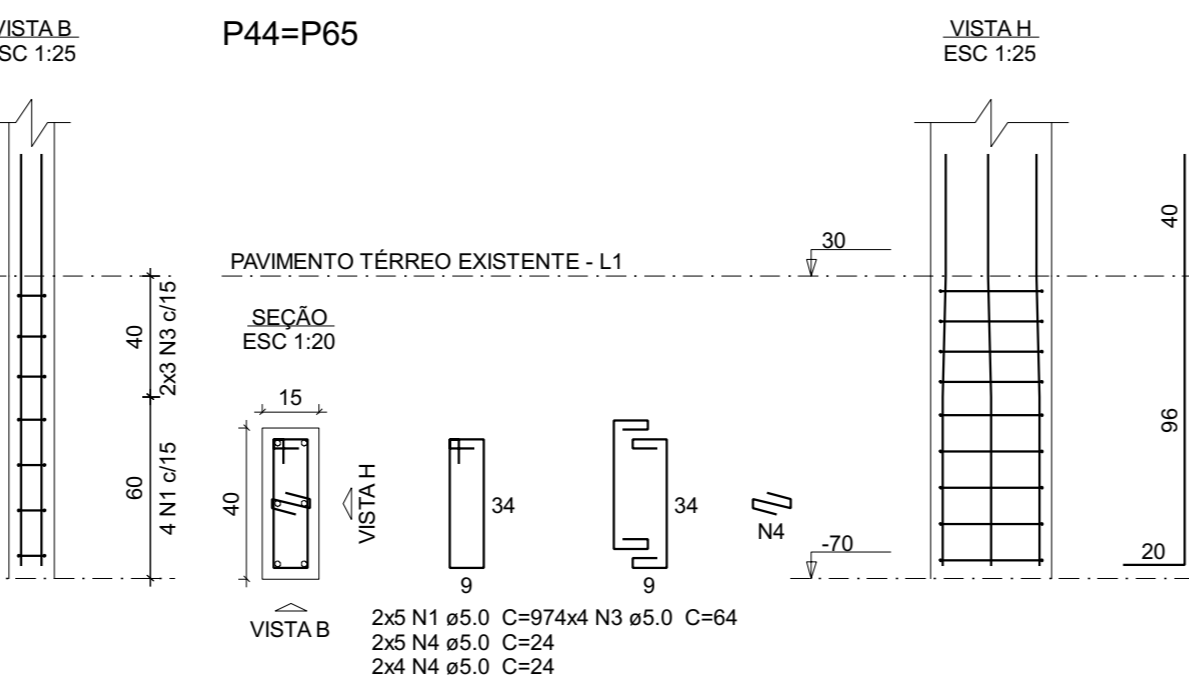
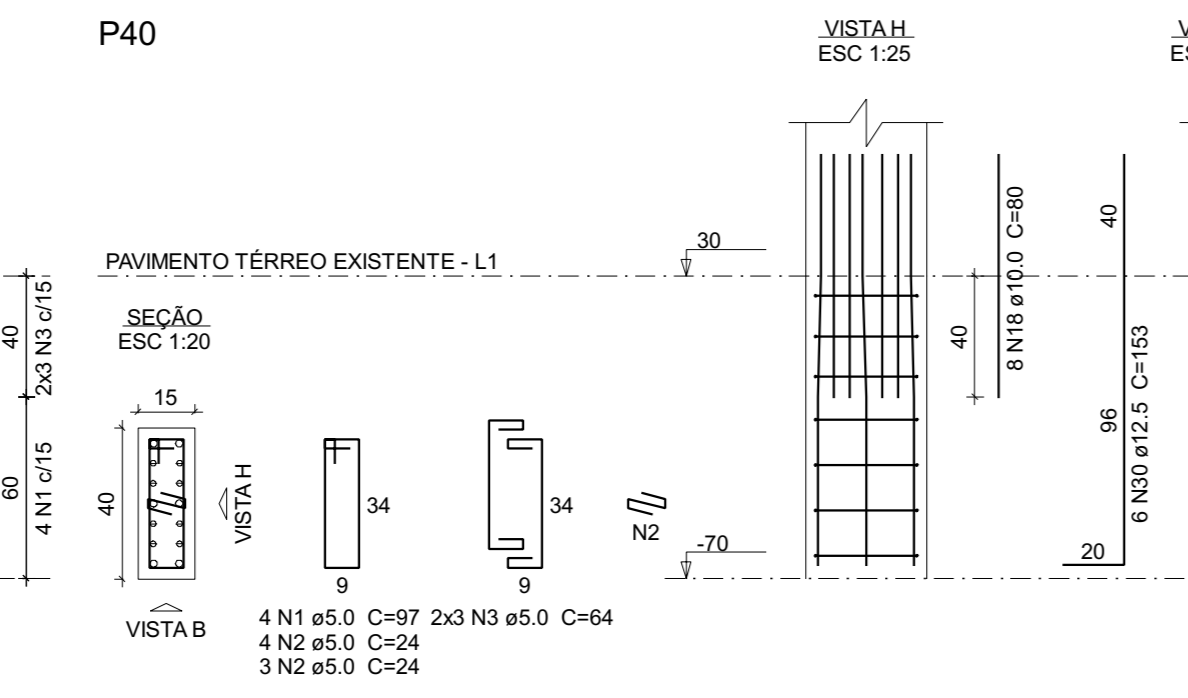
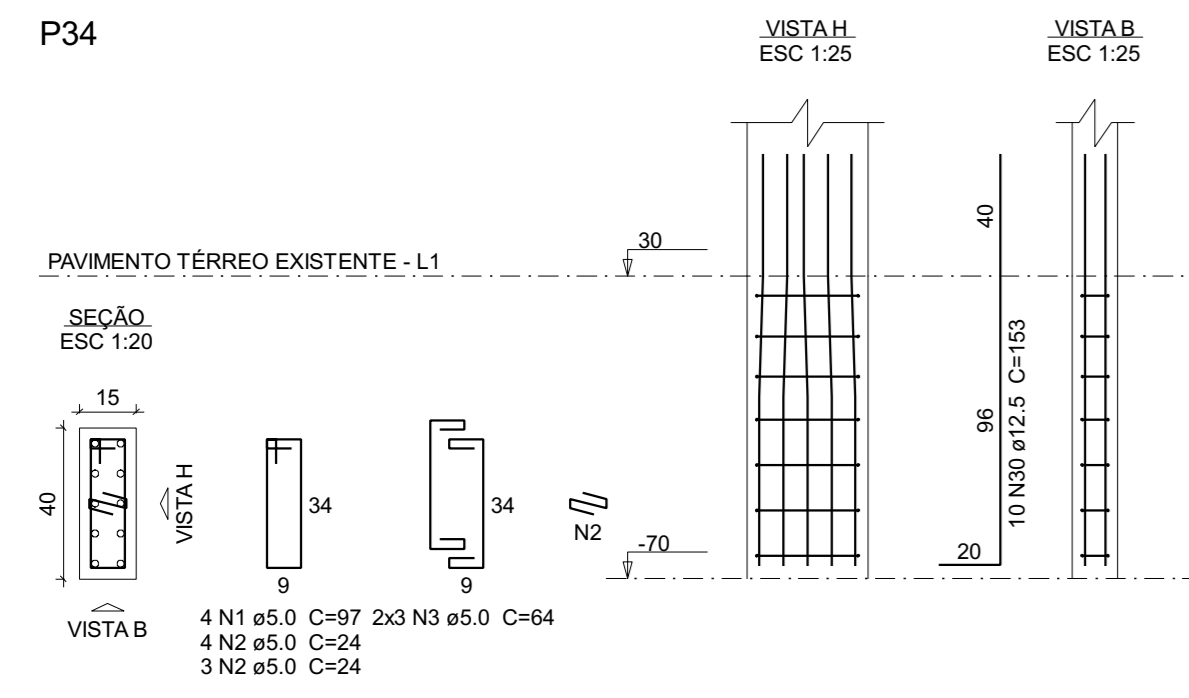
**Relação do aço**

CAISO	N	DIAM (mm)	QUANT	C.UNIT (cm)	C.TOTAL (cm)
CAISO	1	5.0	85	97	8245
CAISO	2	5.0	140	24	3360
CAISO	3	5.0	92	64	5888
CAISO	4	5.0	90	24	2160
CAISO	5	5.0	73	67	4861
CAISO	6	5.0	22	54	1188
CAISO	7	8.0	204	109	22228
CAISO	8	8.0	3	216	648
CAISO	9	8.0	14	63	882
CAISO	10	8.0	3	498	1494
CAISO	11	8.0	7	119	833
CAISO	12	8.0	14	89	1246
CAISO	13	8.0	3	216	648
CAISO	14	8.0	10	88	880
CAISO	15	8.0	6	113	678
CAISO	16	8.0	3	326	978
CAISO	17	8.0	12	696	8352
CAISO	18	10.0	12	60	720
CAISO	19	10.0	60	154	9240
CAISO	20	10.0	32	VAR	VAR
CAISO	21	10.0	12	106	1272
CAISO	22	10.0	6	113	678
CAISO	23	10.0	11	206	2266
CAISO	24	10.0	14	181	2534
CAISO	25	10.0	10	148	1480
CAISO	26	10.0	12	123	1476
CAISO	27	10.0	9	131	1179
CAISO	28	10.0	7	136	952
CAISO	29	12.5	6	VAR	VAR
CAISO	30	12.5	122	153	18666
CAISO	31	12.5	14	80	1120
CAISO	32	12.5	19	240	4560
CAISO	33	12.5	11	330	3630
CAISO	34	12.5	19	136	2584
CAISO	35	12.5	11	226	2486

**Resumo do aço**

CAISO	DIAM (mm)	C.TOTAL (m)	PESO + 10% (kg)
CAISO	8.0	538.5	233.8
CAISO	10.0	269.7	182.9
CAISO	12.5	339.7	359.9
CAISO	5.0	297.4	63.6
<b>CAISO TOTAL</b>			<b>830.2</b>
CAISO	78.6		
CAISO	43.6		

Volume de concreto (C-30) = 10.45 m<sup>3</sup>  
 Área de forma = 41.91 m<sup>2</sup>



**ESCOLA MUNICIPAL INÊS ARAÚJO DUTRA**

Projeto: JOSE GILSON MOREIRA  
 CREA:MS 241.171/0

Prefeitura Municipal de Caputira  
 CNPJ: 18.385.133/0001-11

**PROJETO ESTRUTURAL**

Conteúdo desta prancha

15