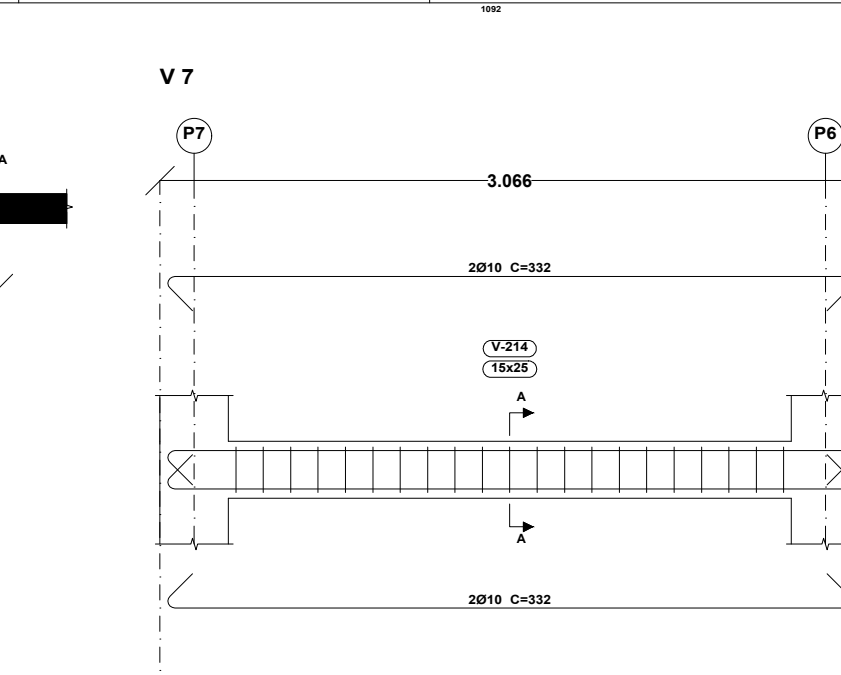
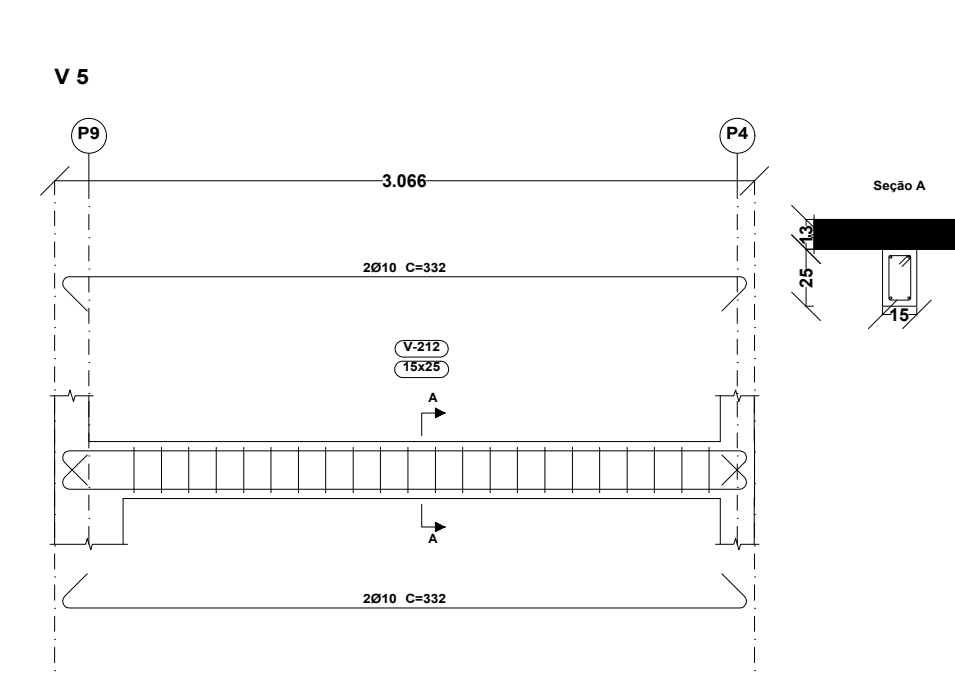
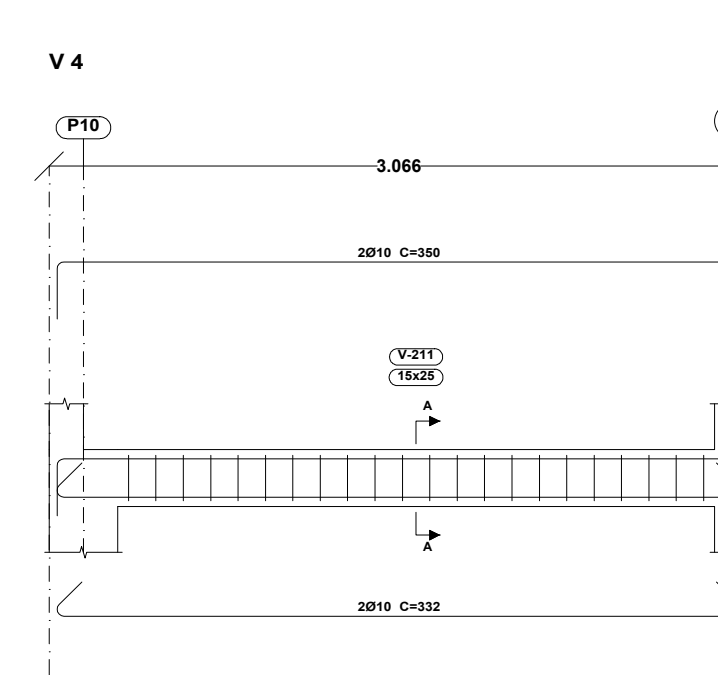
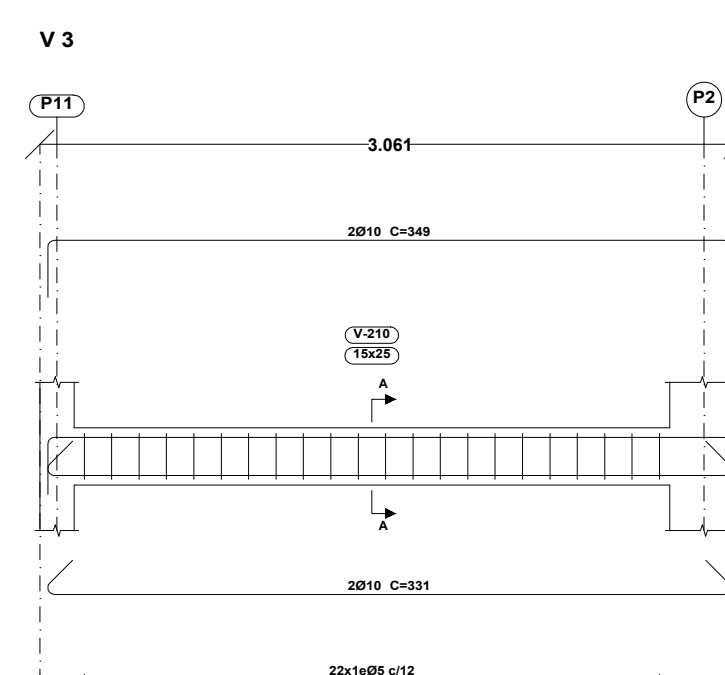
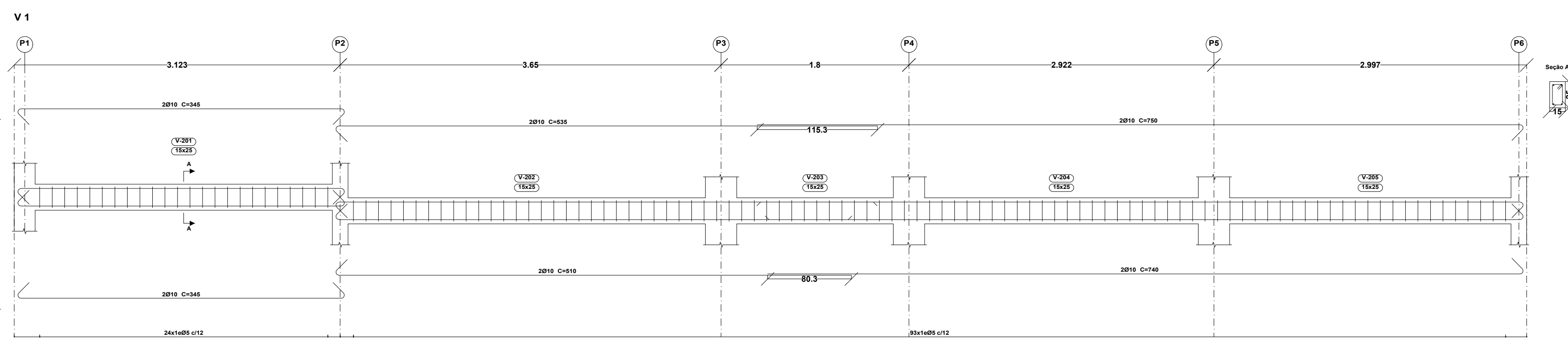


baldrame
Fundação
Concreto: C25, em geral
Escala: 1:50



<p>Cobertura</p> <p>Desenho de vigas</p> <p>Concreto: C25, em geral</p> <p>Aço das barras: CA-50 e CA-60</p> <p>Aço dos estribos: CA-50 e CA-60</p> <p>Escala vigas 1:20</p> <p>Escala seções 1:20</p> <p>Escala aberturas 1:20</p>

VIGAMENTO COBERTURA
ESC. 1/100

A1