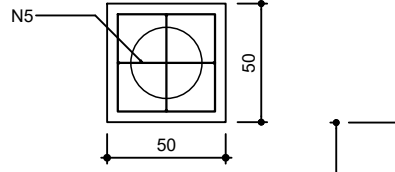


B1=B2=B3=B7=B8=B10

1xC30

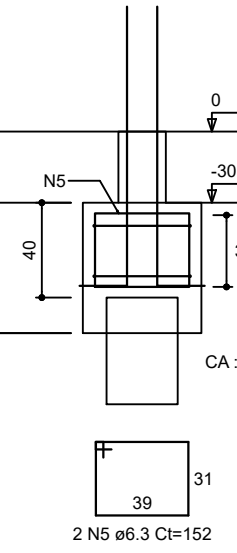
PLANTA

ESC 1:25



CORTE

ESC 1:25



P1=P2=P3=P7=P10

TERREO - L1

ESC 1:20

VAR

VAR

VAR

VAR

VAR

VAR

VAR

VAR

VAR

VAR

VAR

VAR

VAR

VAR

VAR

VAR

VAR

VAR

VAR

VAR

VAR

VAR

VAR

VAR

VAR

VAR

VAR

VAR

VAR

VAR

VAR

VAR

VAR

VAR

VAR

VAR

VAR

VAR

VAR

VAR

VAR

VAR

VAR

VAR

VAR

VAR

VAR

VAR

VAR

VAR

VAR

VAR

VAR

VAR

VAR

VAR

VAR

VAR

VAR

VAR

VAR

VAR

VAR

VAR

VAR

VAR

VAR

VAR

VAR

VAR

VAR

VAR

VAR

VAR

VAR

VAR

VAR

VAR

VAR

VAR

VAR

VAR

VAR

VAR

VAR

VAR

VAR

VAR

VAR

VAR

VAR

VAR

VAR

VAR

VAR

VAR

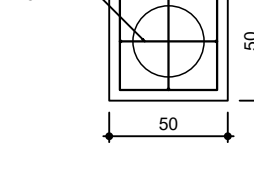
VAR

B4=B5=B6=B9=B11

1xC30

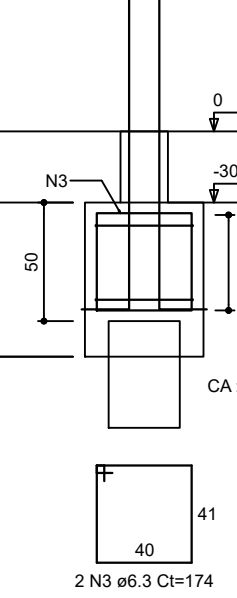
PLANTA

ESC 1:25



CORTE

ESC 1:25



P4=P5=P6=P9=P11

TERREO - L1

ESC 1:20

VAR

VAR

VAR

VAR

VAR

VAR

VAR

VAR

VAR

VAR

VAR

VAR

VAR

VAR

VAR

VAR

VAR

VAR

VAR

VAR

VAR

VAR

VAR

VAR

VAR

VAR

VAR

VAR

VAR

VAR

VAR

VAR

VAR

VAR

VAR

VAR

VAR

VAR

VAR

VAR

VAR

VAR

VAR

VAR

VAR

VAR

VAR

VAR

VAR

VAR

VAR

VAR

VAR

VAR

VAR

VAR

VAR

VAR

VAR

VAR

VAR

VAR

VAR

VAR

VAR

VAR

VAR

VAR

VAR

VAR

VAR

VAR

VAR

VAR

VAR

VAR

VAR

VAR

VAR

VAR

VAR

VAR

VAR

VAR

VAR

VAR

VAR

VAR

VAR

VAR

VAR

VAR

VAR

VAR

VAR

VAR

RELAÇÃO DO AÇO

6x8

6x4

17x87

5xP1

AÇO	N	DIAM (mm)	QUANT	C UNIT (cm)	C TOTAL (cm)
CA50	1	5.0	18	175	3150
CA50	2	5.0	71	87	6177
CA50	3	6.3	12	174	2088
CA50	4	6.3	51	178	8976
CA50	5	6.3	34	152	5168
CA50	6	10.0	20	VAR	VAR
CA50	7	12.5	24	VAR	VAR

RESUMO DO AÇO

AÇO	DIAM (mm)	C TOTAL (cm)	PESO + 0% (kg)
CA50	6.3	162.3	39.7
CA50	10.0	24.4	15
CA50	12.5	33.6	32.4
CA50	5.0	93.3	14.4
PESO TOTAL (kg)			
CA50		87.1	
CA50		14.4	

Volume de concreto (C-20) = 3.07 m³

Volume de concreto (C-25) = 0.50 m³

Área de forma = 34.80 m²

RELAÇÃO DO AÇO

4xP1-L3

4xP6-L3

4xP1-L2

4xP6-L2

2xP4-L2

P7-L2

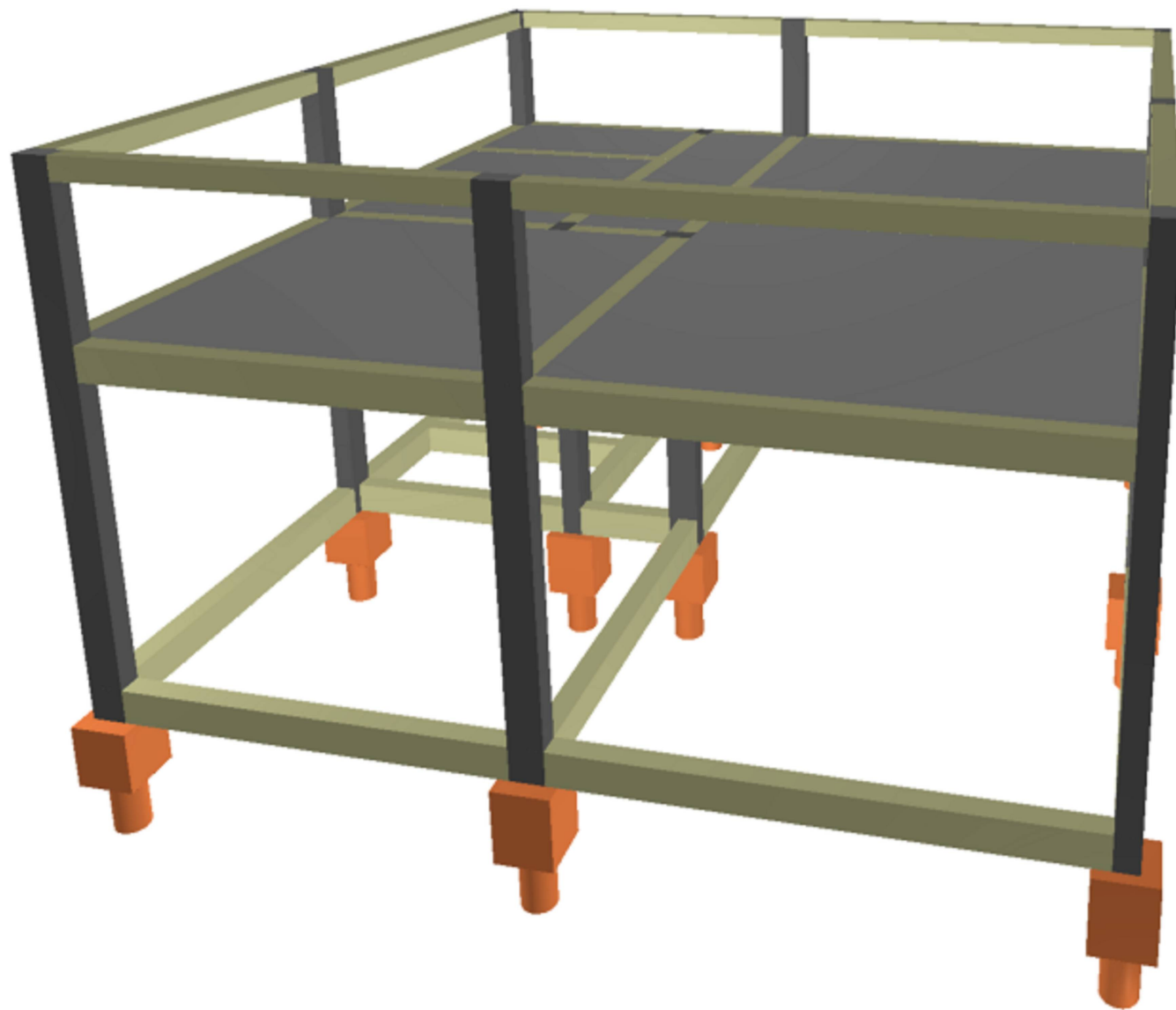
AÇO	N	DIAM (mm)	QUANT	C UNIT (cm)	C TOTAL (cm)
CA50	1	5.0	370	87	32190
CA50	2	10.0	16	147	2352
CA50	3	10.0	16	338	5408
CA50	4	10.0	4	297	1188
CA50	5	12.5	8	297	2376
CA50	6	12.5	16	147	2352
CA50	7	12.5	16	347	5552

RESUMO DO AÇO

AÇO	DIAM (mm)	C TOTAL (m)	PESO + 0% (kg)
CA50	10.0	89.5	55.2
CA50	12.5	102.8	99
CA50	5.0	321.9	49.6
PESO TOTAL (kg)			
CA50		154.2	
CA50		49.6	

Volume de concreto (C-25) = 2.70 m³

Área de forma = 45.00 m²



P1=P2=P3=P10

COBERTURA - L2

ESC 1:20

VAR

VAR

VAR

VAR

VAR

VAR

VAR

VAR

VAR

VAR

VAR

VAR

VAR

VAR

VAR

VAR

VAR

VAR

VAR

VAR

VAR

VAR

VAR

VAR

VAR

VAR

VAR

VAR

VAR

VAR

VAR

VAR

VAR

VAR

VAR

VAR

VAR

VAR

VAR

VAR

VAR

VAR

VAR

VAR

VAR

VAR

VAR

VAR

VAR

VAR

VAR

VAR

VAR

VAR

VAR

VAR

VAR

VAR

VAR

VAR

VAR

VAR

VAR

VAR

VAR

VAR

VAR

VAR

VAR

VAR

VAR

VAR

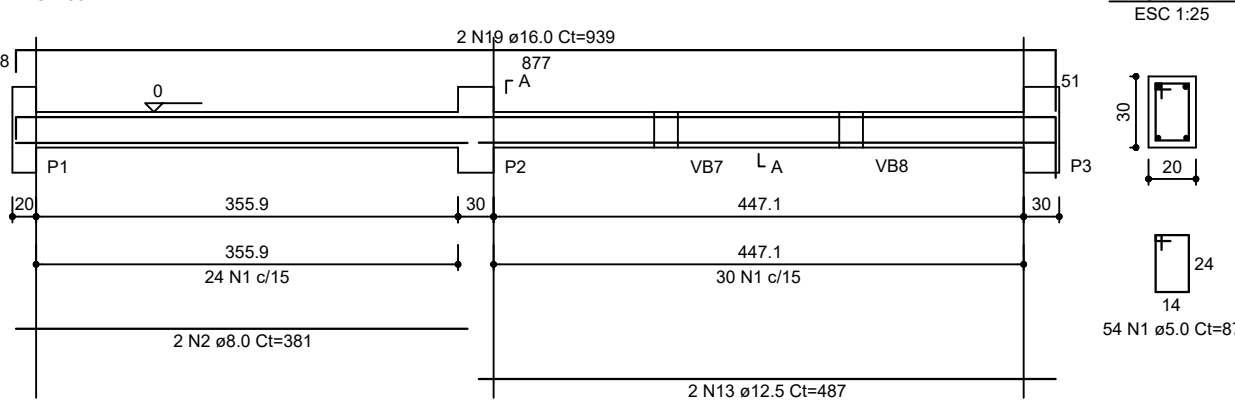
VAR

VAR

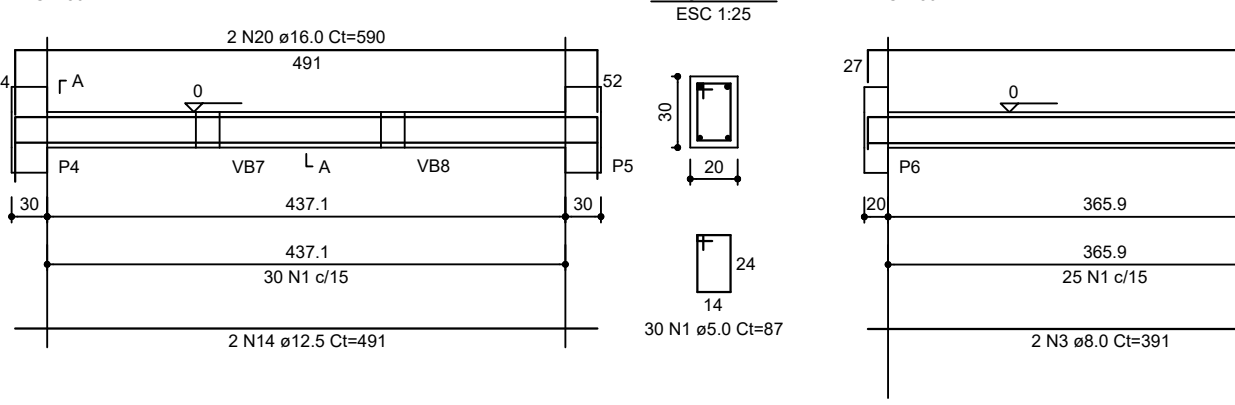
VAR

VAR

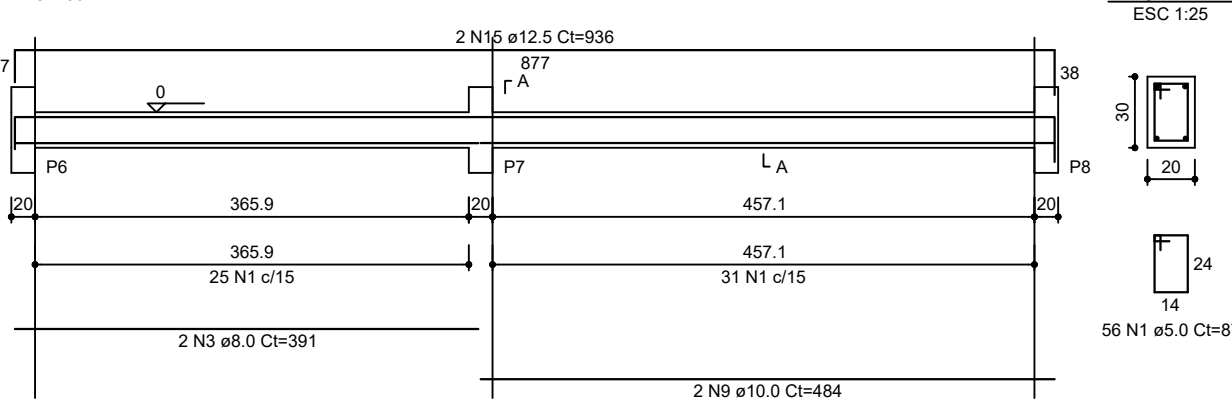
VB1 (20 x 30)



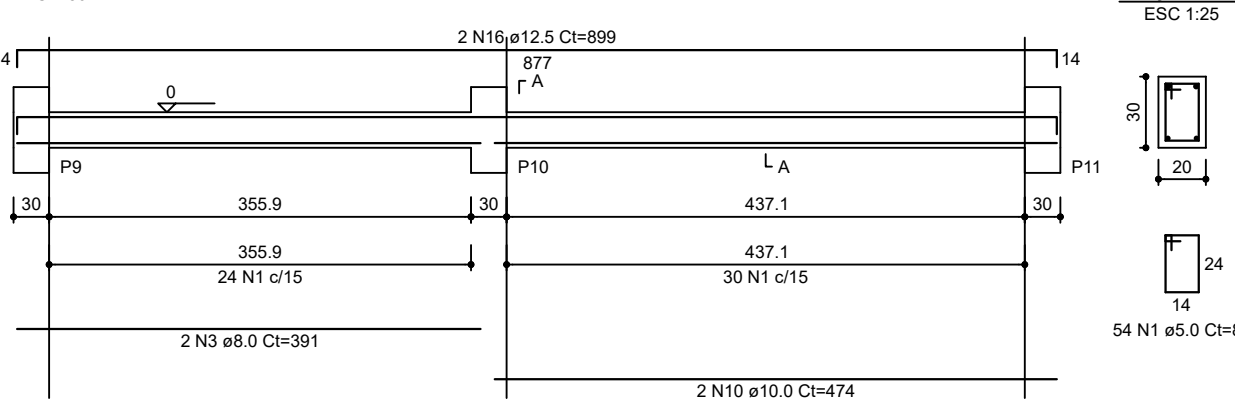
VB2 (20 x 30)



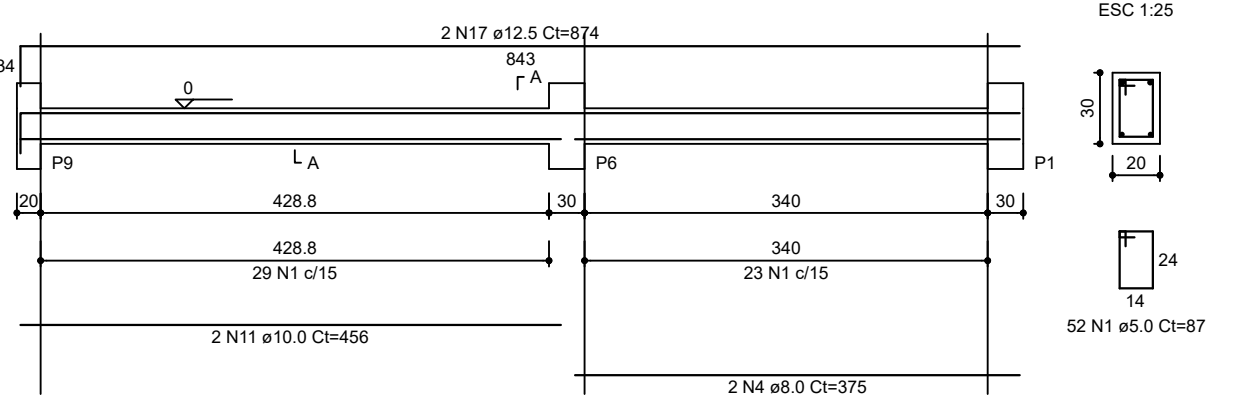
VB3 (20 x 30)



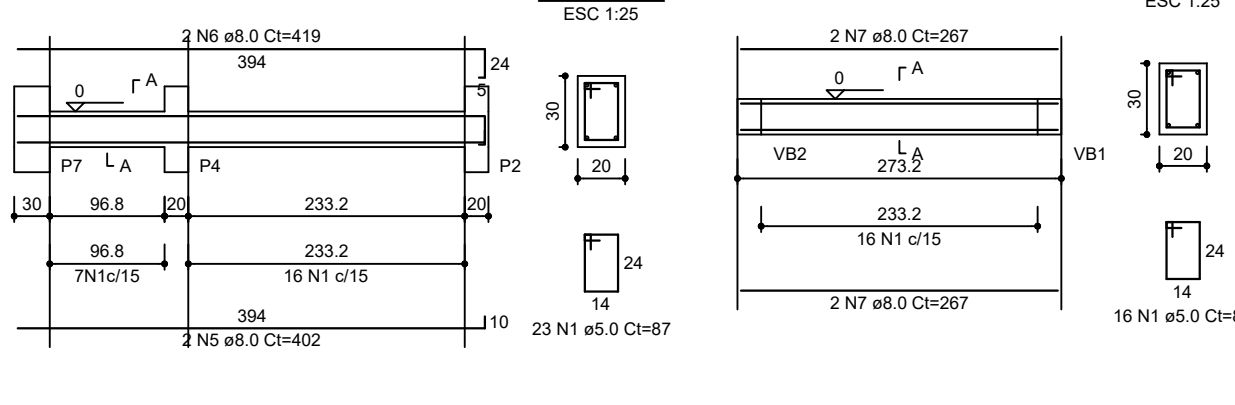
VB4 (20 x 30)



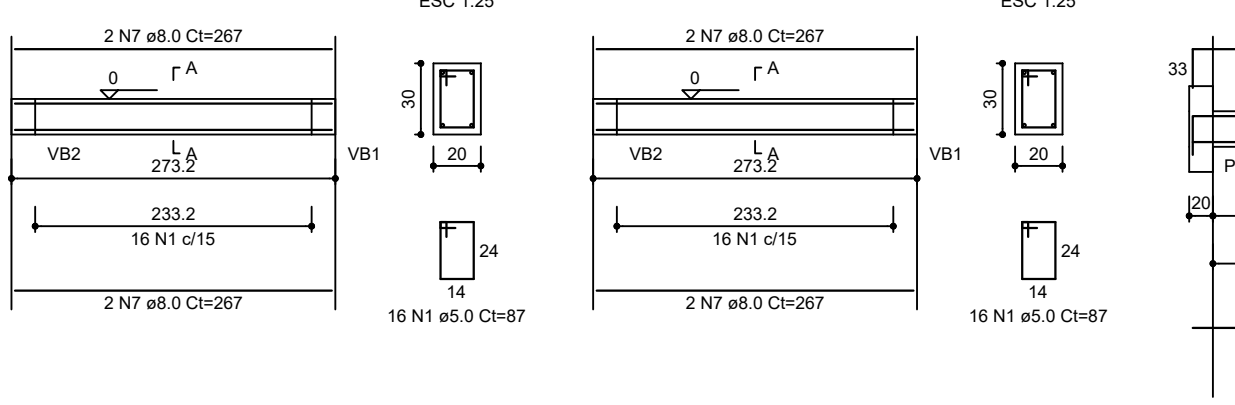
VB5 (20 x 30)



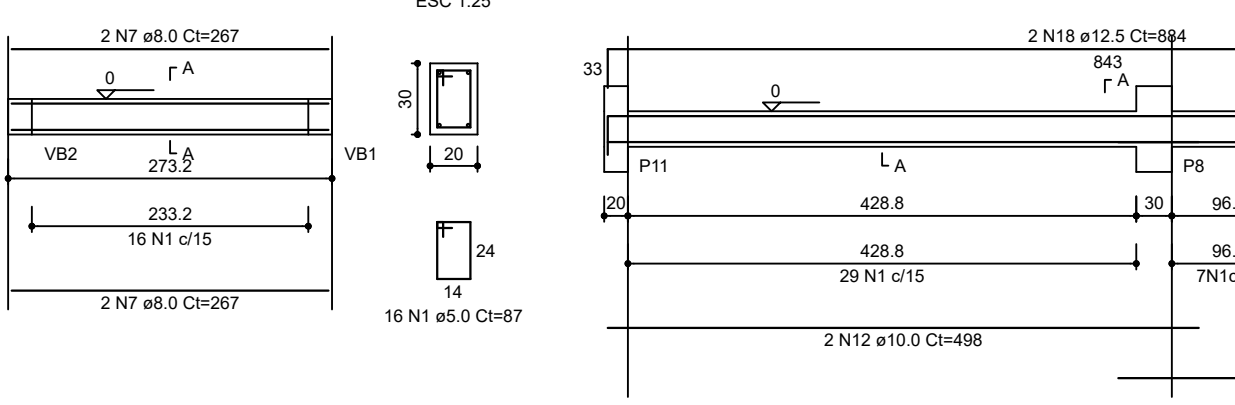
VB6 (20 x 30)



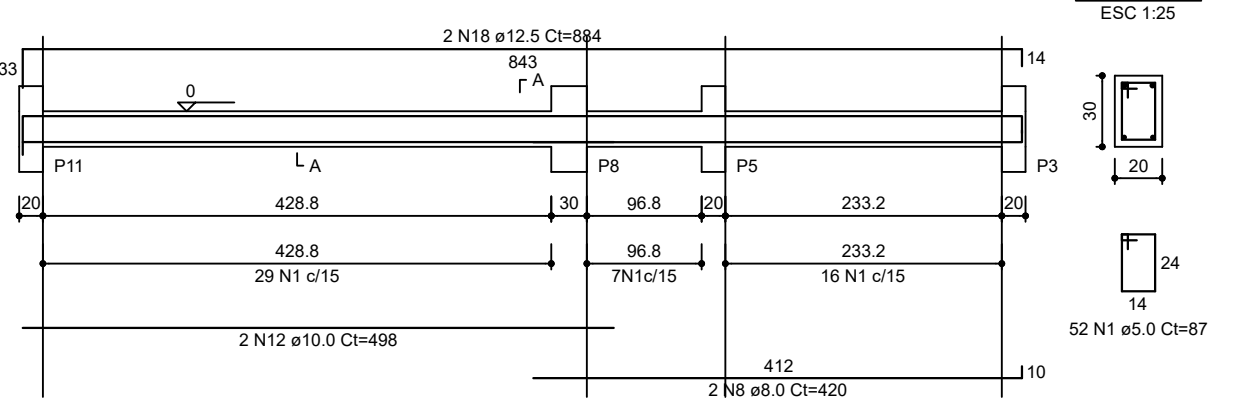
VB7 (20 x 30)



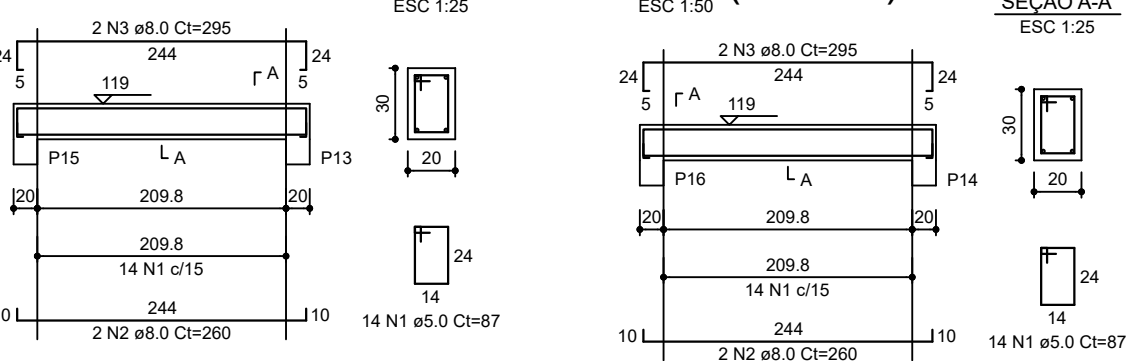
VB8 (20 x 30)



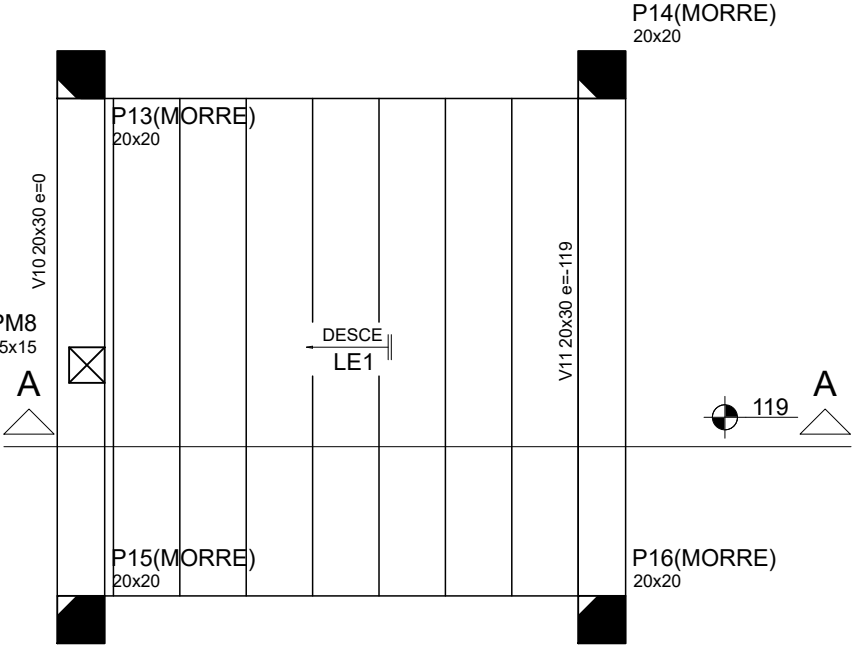
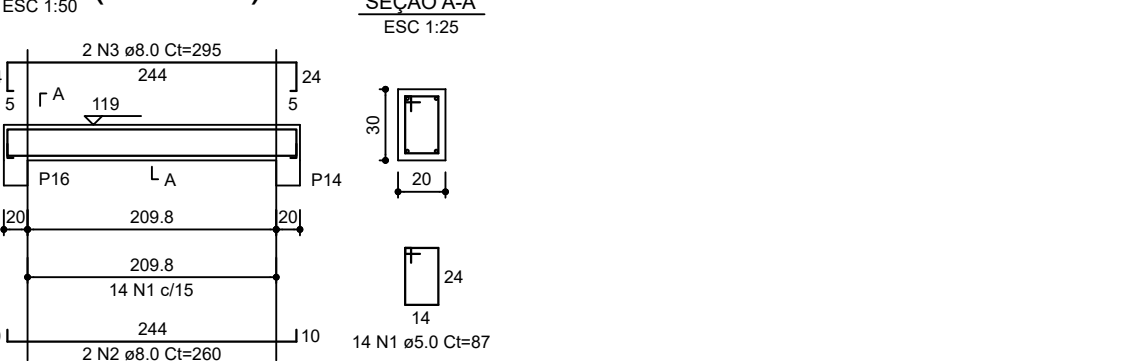
VB9 (20 x 30)



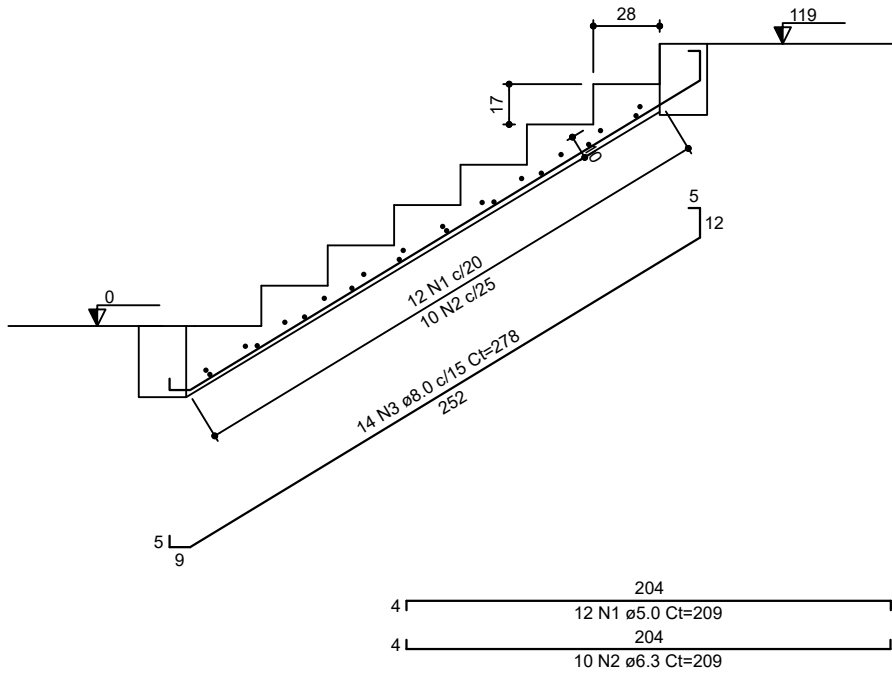
V10 (20 x 30)



V11 (20 x 30)

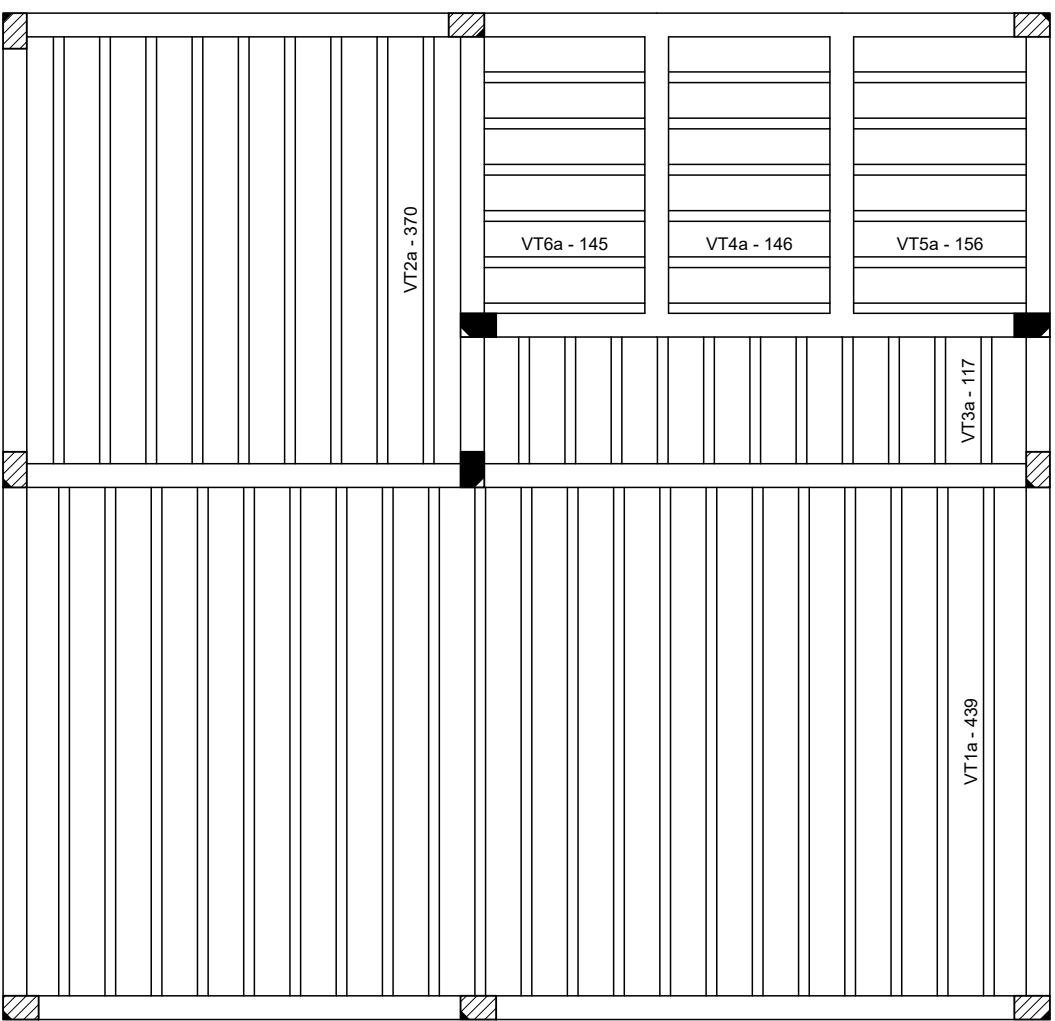


Armação positiva da escada E1
escala 1:25



Corte A-A (LE1)
escala 1:25

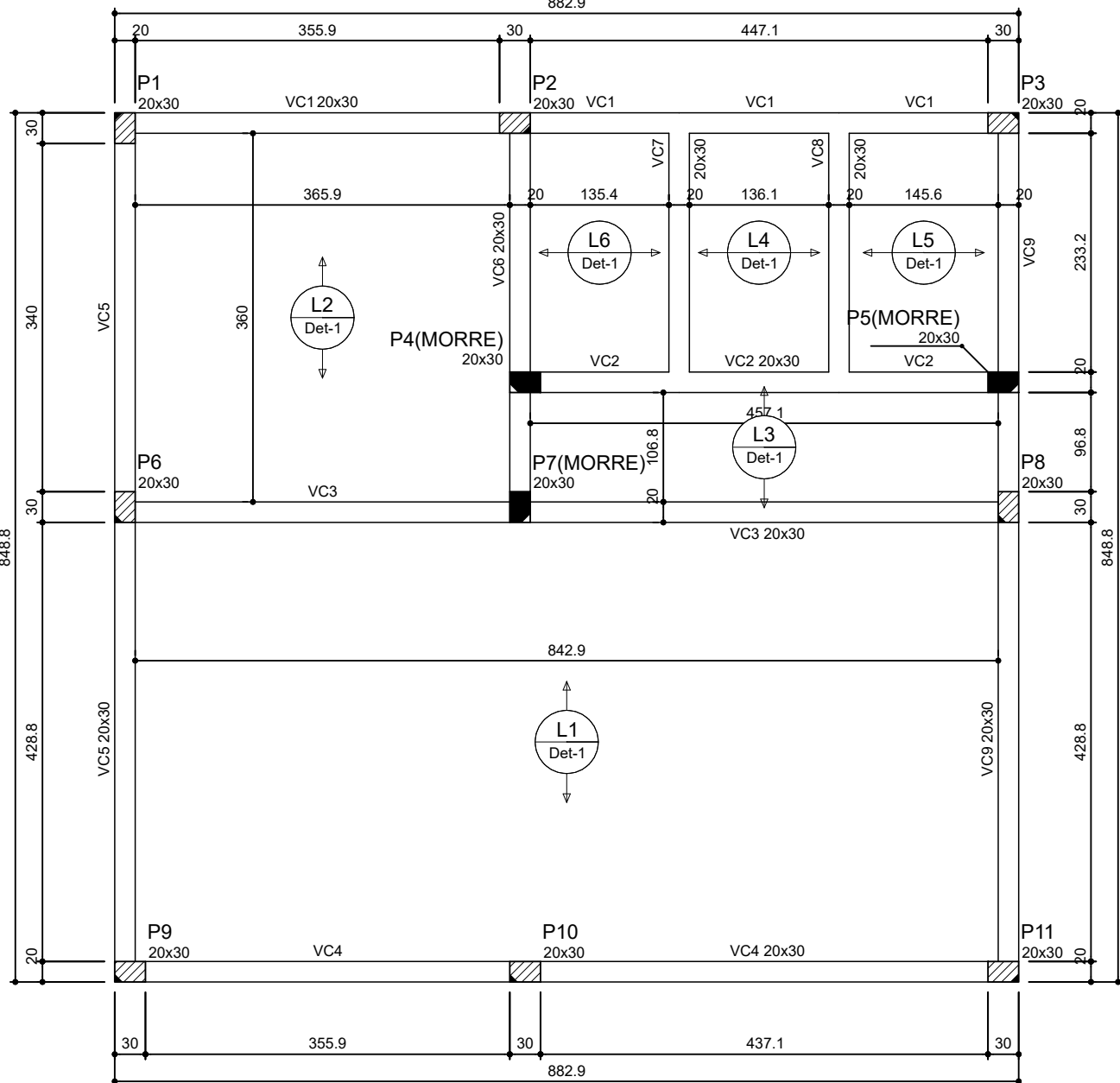
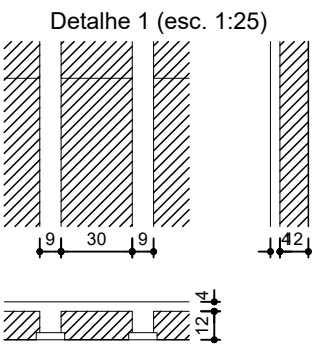
RELAÇÃO DO AÇO						
V10	V12	V14	V16	V18	V20	V22
V24	V26	V28	V30	V32	V34	V36
V38	V40	V42	V44	V46	V48	V50
CAÇO	N	DIAM (mm)	QUANT	C. UNIT (cm)	C. TOTAL (cm)	
CA50	1	5,0	381	87	33147	
	2	5,0	2	250	1040	
	3	8,0	4	295	1180	
	4	8,0	2	843	1686	
	5	8,0	2	102	804	
	6	8,0	2	445	890	
	7	8,0	6	267	2136	
	8	10,0	2	383	766	
	9	10,0	2	377	754	
	10	10,0	2	871	1742	
	11	10,0	2	879	1758	
	12	10,0	2	187	914	
	13	12,5	2	491	982	
	14	12,5	2	926	1852	
	15	12,5	2	928	1856	
16	16,0	2	568	1136		
17	16,0	2	581	1162		



Planta de vigotas pré-moldadas
escala 1:50

Blocos de enchimento				
Detalhe	Tipo	Nome	Dimensões(cm)	Quantidade
1	EPS Unidirecional	B12/30/125	12 30 125	166

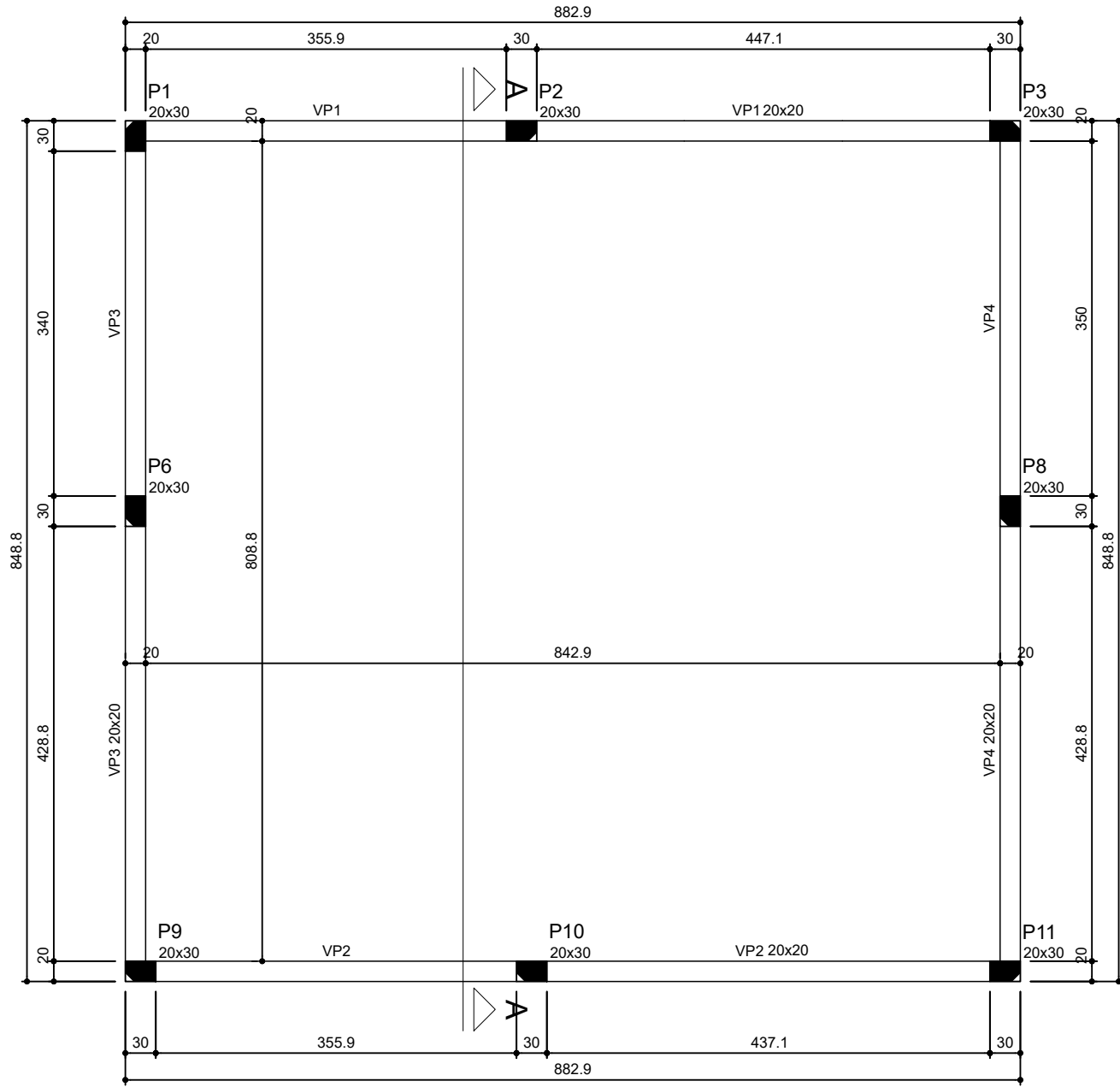
Lajes				
Nome	Tipo	Altura (cm)	Elevação (cm)	Nível (cm)
L1	Trelçada 1D	16	0	300
L2	Trelçada 1D	16	0	300
L3	Trelçada 1D	16	0	300
L4	Trelçada 1D	16	0	300
L5	Trelçada 1D	16	0	300
L6	Trelçada 1D	16	0	300



Características dos materiais	
fck (kgf/cm²)	25
Ecs (kgf/cm²)	289800

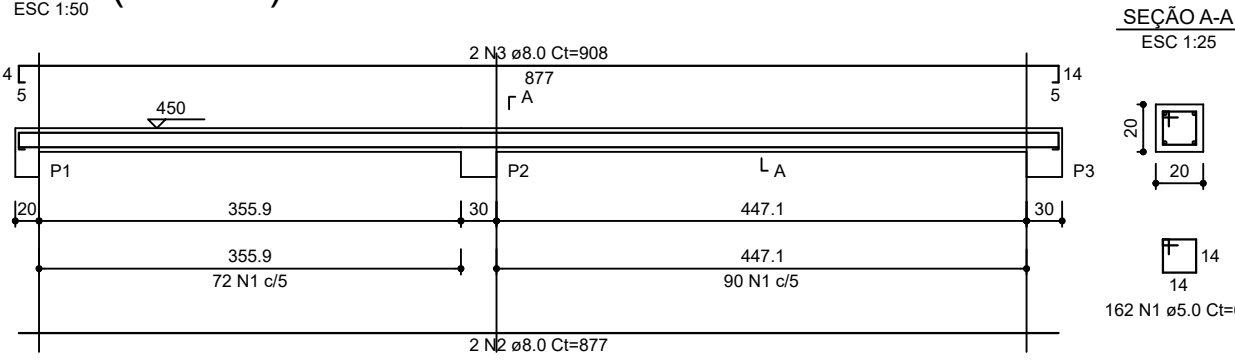
Legenda dos pilares	
■	Pilar que morre
▨	Pilar que passa

Forma do pavimento COBERTURA
escala 1:50

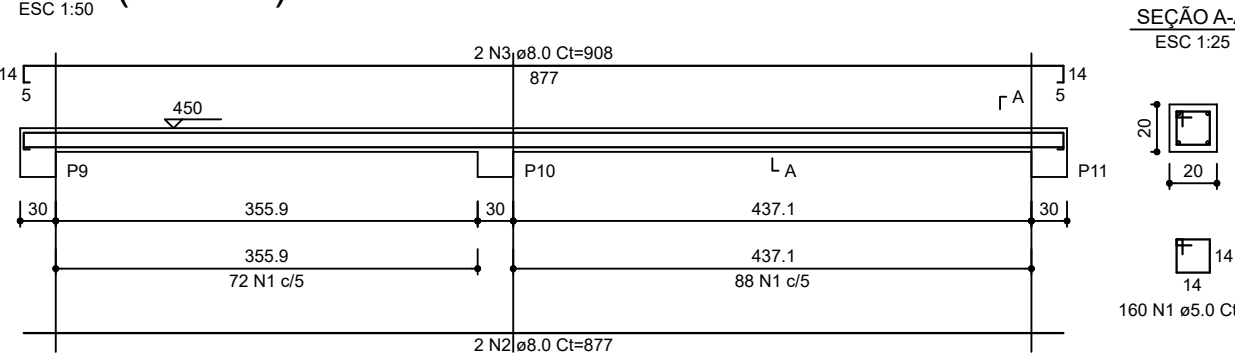


Forma do pavimento PLATIBANDA
escala 1:50

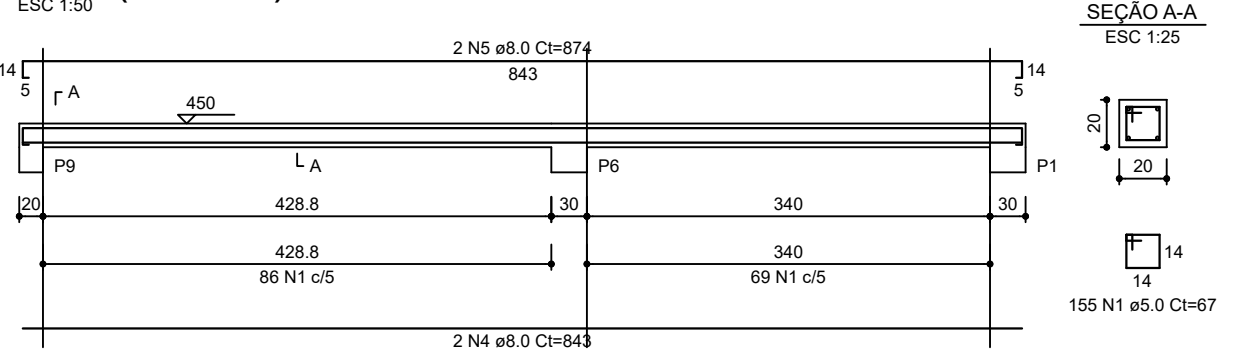
VP1 (20 x 20)



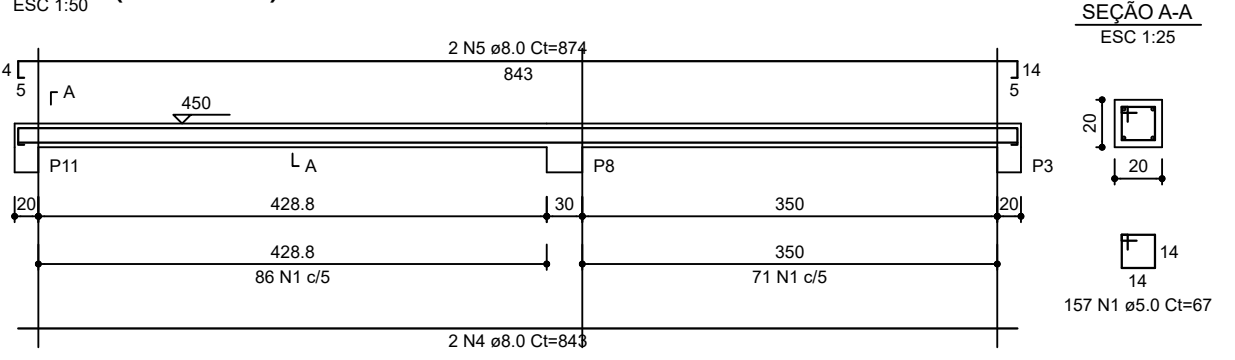
VP2 (20 x 20)



VP3 (20 x 20)



VP4 (20 x 20)



Características dos materiais	
fck (kgf/cm²)	25
Ecs (kgf/cm²)	289800

Legenda dos pilares	
■	Pilar que morre
▨	Pilar que passa
□	Pilar que nasce
▤	Pilar com mudança de seção

RELAÇÃO DO AÇO					
VP1 VP4	N	DIAM (mm)	QUANT	C.UNIT (cm)	C.TOTAL (cm)
CA60	1	5.0	634	87	42478
	2	8.0	4	877	3508
	3	8.0	4	877	3508
	4	8.0	4	843	3372
	5	8.0	4	874	3496

RESUMO DO AÇO			
AÇO	DIAM (mm)	C.TOTAL (m)	PESO + 0% (kg)
CA50	8.0	140.1	55.3
CA60	5.0	424.8	65.5
PESO TOTAL (kg)			
CA50		55.3	
CA60		65.5	

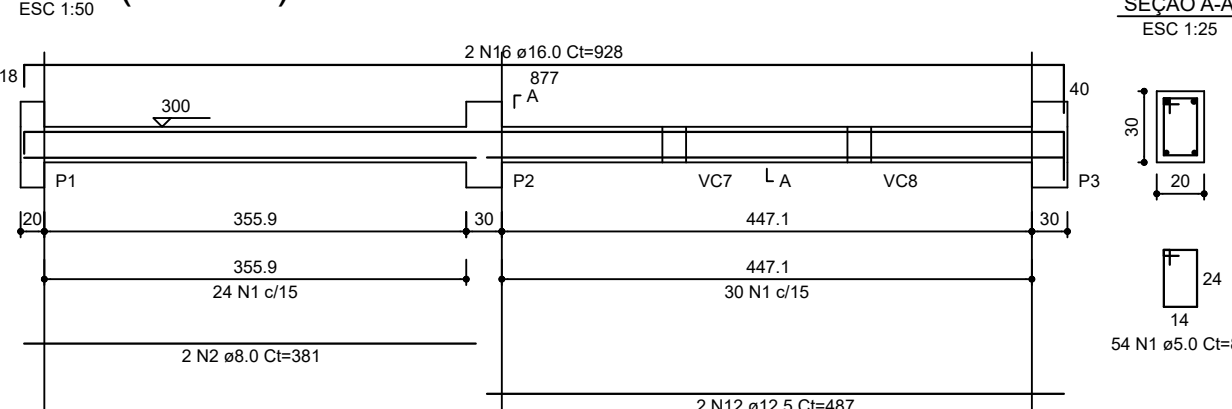
Volume de concreto (C-25) = 1.39 m³
Área de forma = 20.78 m²

RELAÇÃO DO AÇO					
VC1 VC4 VC7	N	DIAM (mm)	QUANT	C.UNIT (cm)	C.TOTAL (cm)
CA60	1	5.0	353	87	30711
	2	8.0	4	843	3372
	3	8.0	2	402	804
	4	8.0	2	445	890
	5	8.0	8	267	2136
	6	10.0	2	383	766
	7	10.0	4	877	3508
	8	10.0	2	869	1738
	9	10.0	2	877	1754
	10	12.5	2	487	974
	11	12.5	2	491	982
	12	12.5	2	928	1856
	13	16.0	2	929	1858
	14	16.0	2	570	1140
	15	16.0	2	891	1782

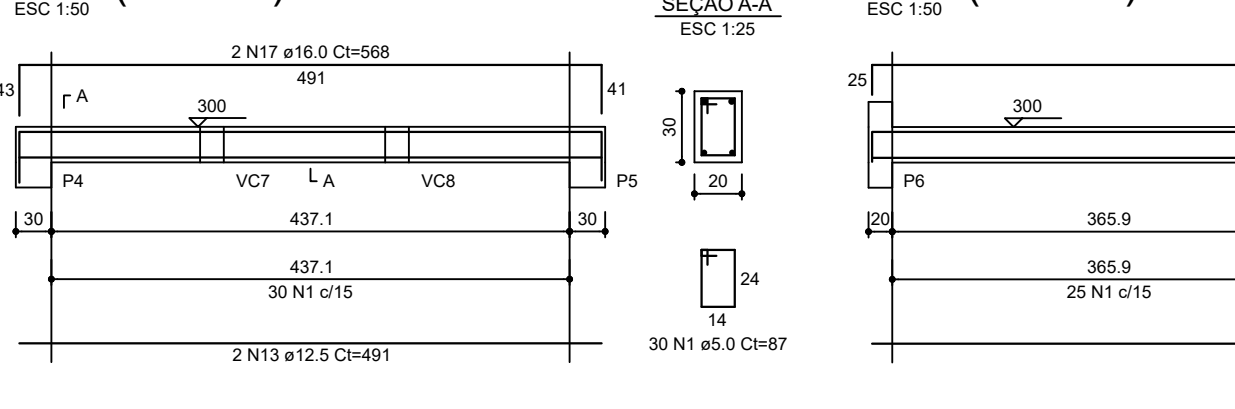
RESUMO DO AÇO			
AÇO	DIAM (mm)	C.TOTAL (m)	PESO + 0% (kg)
CA50	8.0	72	28.4
CA50	10.0	77.7	47.9
CA50	12.5	38.1	36.7
CA60	16.0	47.8	75.4
CA60	5.0	307.1	47.3
PESO TOTAL (kg)			
CA50		188.5	
CA60		47.3	

Volume de concreto (C-25) = 3.47 m³
Área de forma = 48.32 m²

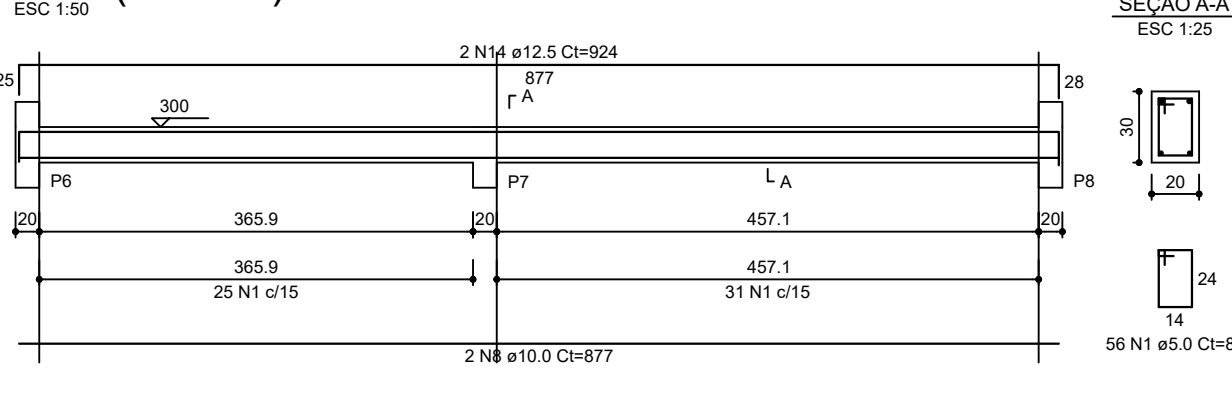
VC1 (20 x 30)



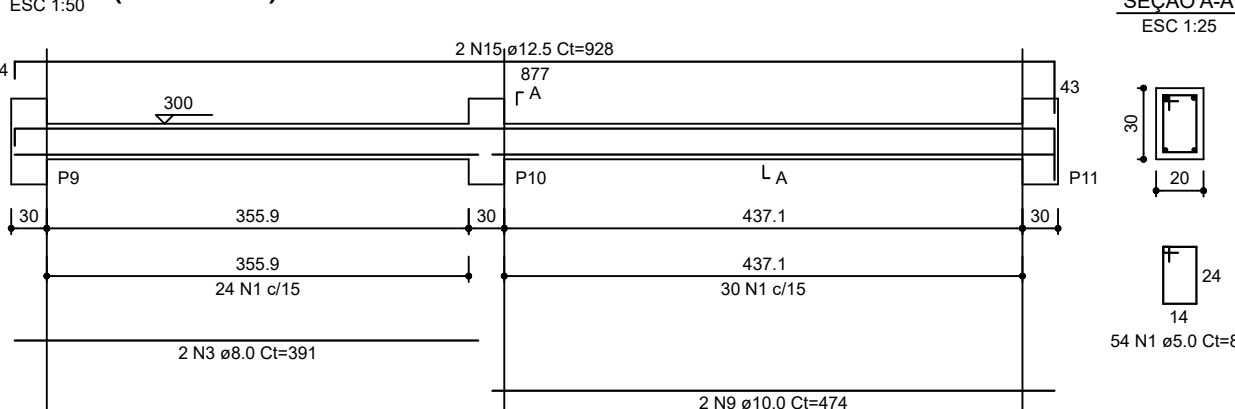
VC2 (20 x 30)



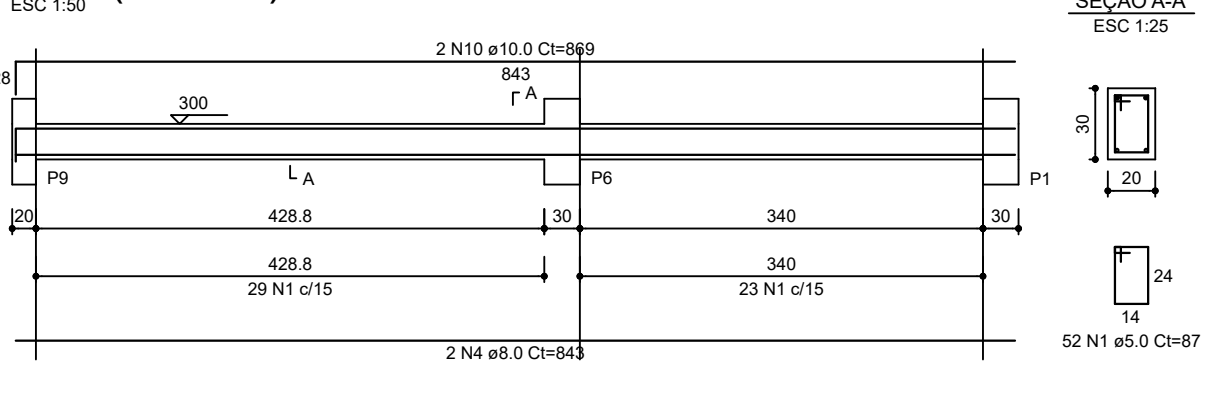
VC3 (20 x 30)



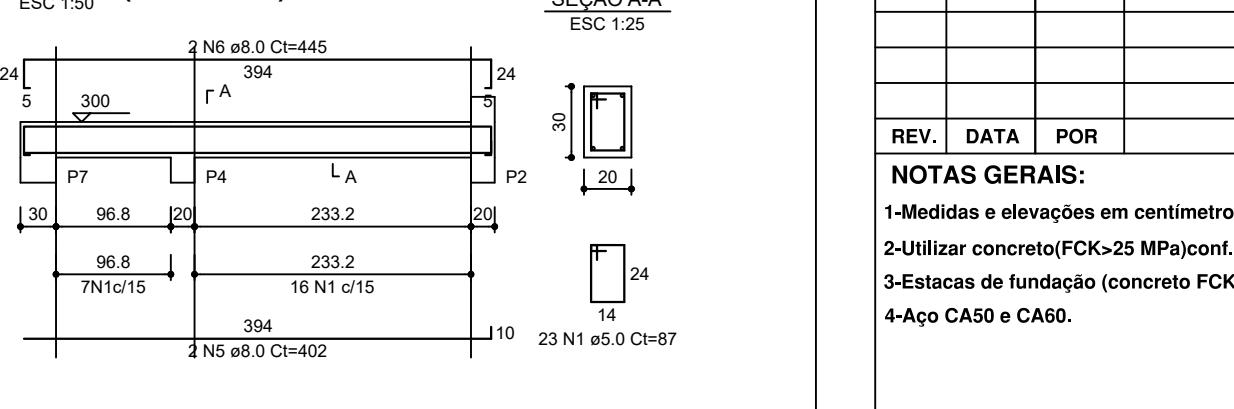
VC4 (20 x 30)



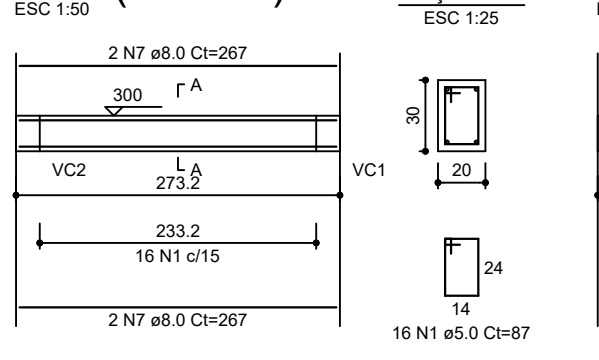
VC5 (20 x 30)



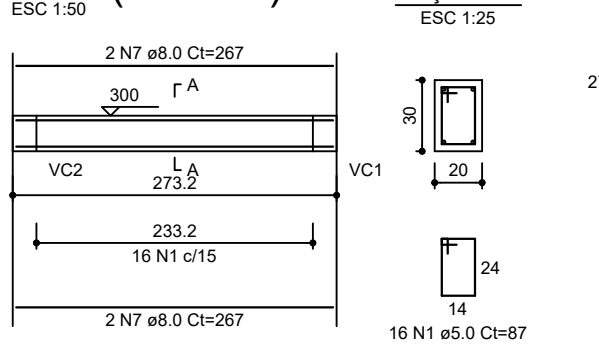
VC6 (20 x 30)



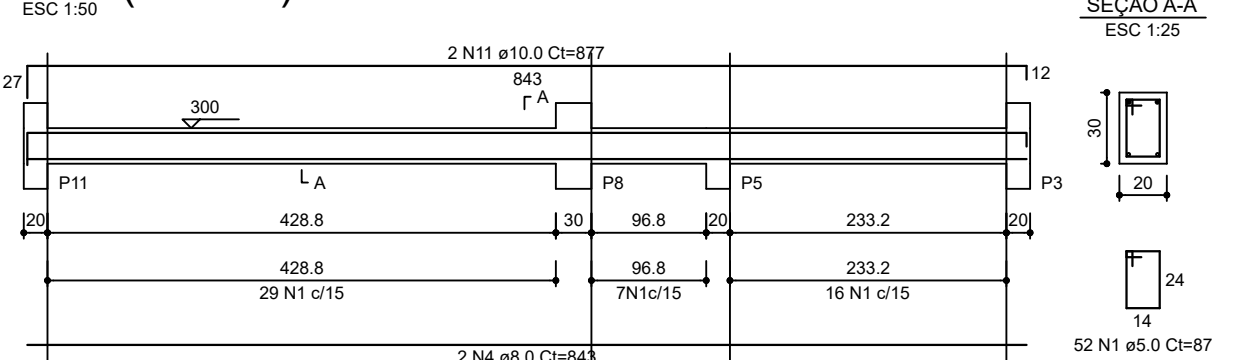
VC7 (20 x 30)



VC8 (20 x 30)



VC9 (20 x 30)



REV.	DATA	POR	DESCRIÇÃO DAS EMISSÕES/REVISÕES
NOTAS GERAIS: 1-Medidas e elevações em centímetros. 2-Utilizar concreto(FCK>25 MPa)conf. tabela mat. 3-Estacas de fundação (concreto FCK>20 MPa). 4-Aço CA50 e CA60. 6-Diâmetro máximo da brita: 19 mm (brita 1) 7-Modulo de elasticidade (C25): 21,735 GPa 8-Abatimento (slump): 12 cm ±2			
PROJETO ESTRUTURAL			
PROJETO		CREA: 187.289-D/MG	
NOME: LUIZ FELIPE CALDERA ROCHA			
PROP.		CNPJ - 18.602.011/0001-07	
NOME: PREFEITURA DE PATOS DE MINAS			
LOGRADOURO:	ÁREA CONSTRUÇÃO	ESCALA	DATA
ANEXO MOTORISTAS - POLICLINICA	00,00m?	INDICADA	11/2025
CONTEUDO	FOLHA		
FORMA DA COBERTURA, PLATIBANDA E ARMAÇÃO DAS VIGAS			03/03