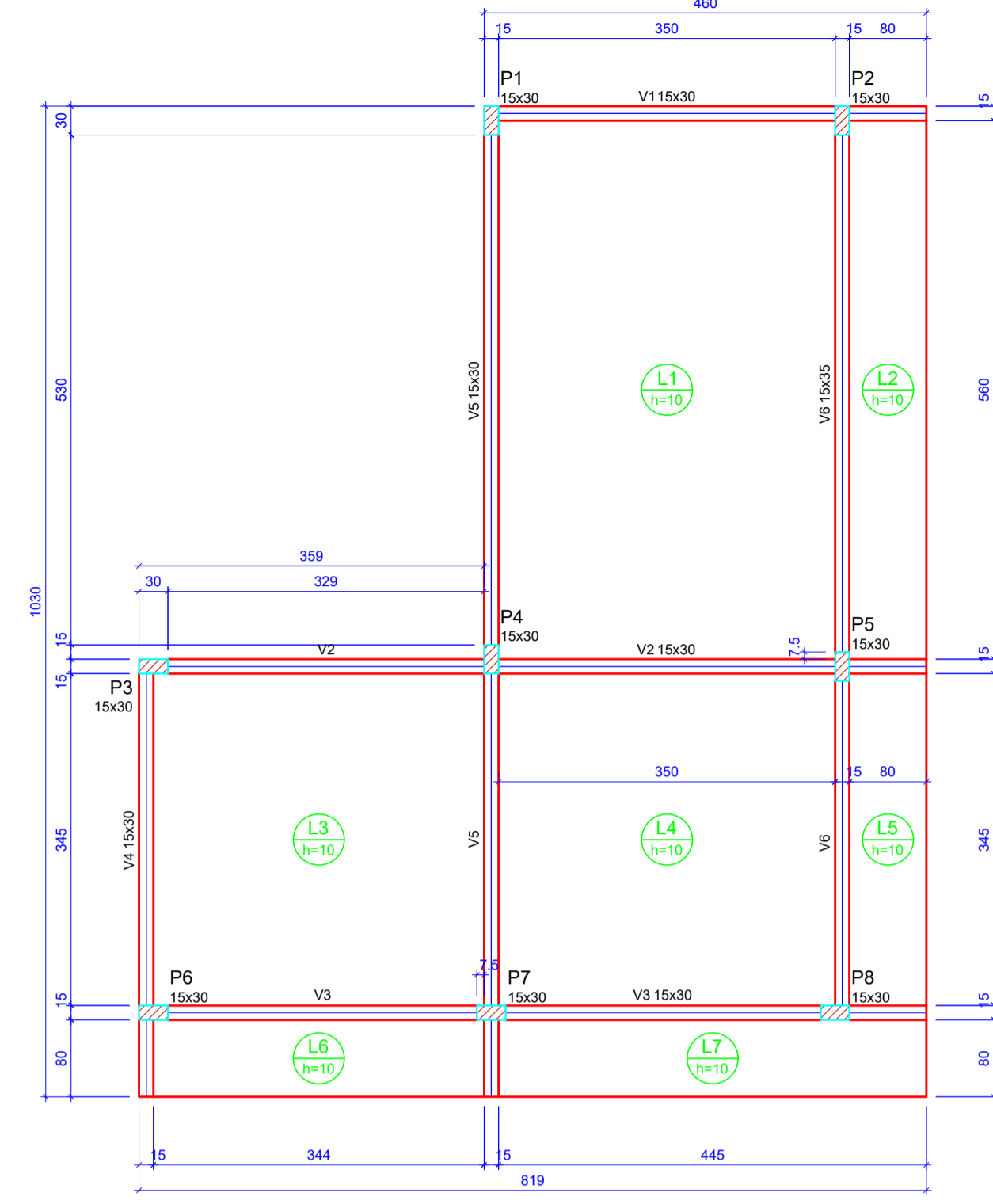


Vigas			
Nome	Seção (cm)	Elevação (cm)	Nível (cm)
V1	15x30	0	0
V2	15x30	0	0
V3	15x30	0	0
V4	15x30	0	0
V5	15x30	0	0
V6	15x30	0	0

Características dos materiais	
fck (kgf/cm²)	Ecs (kgf/cm³)
250	241500

Pilares			
Nome	Seção (cm)	Elevação (cm)	Nível (cm)
P1	15x30	0	0
P2	15x30	0	0
P3	15x30	0	0
P4	15x30	0	0
P5	15x30	0	0
P6	15x30	0	0
P7	15x30	0	0
P8	15x30	0	0

Legenda dos pilares  
 Pilar que passa

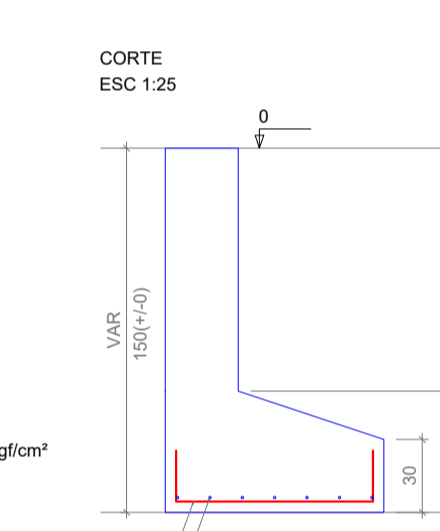
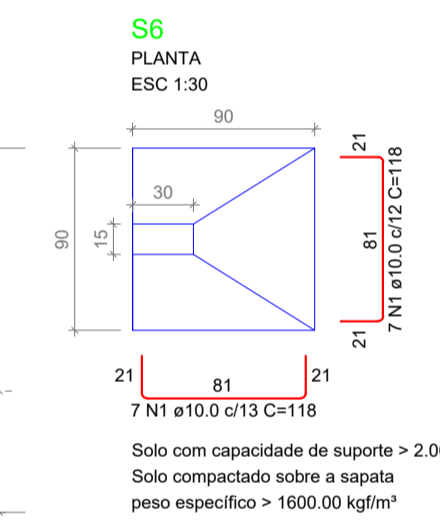
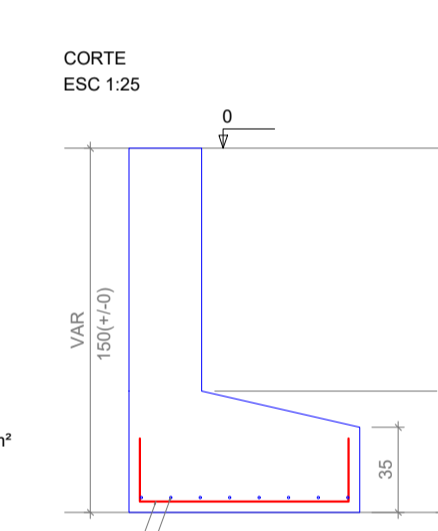
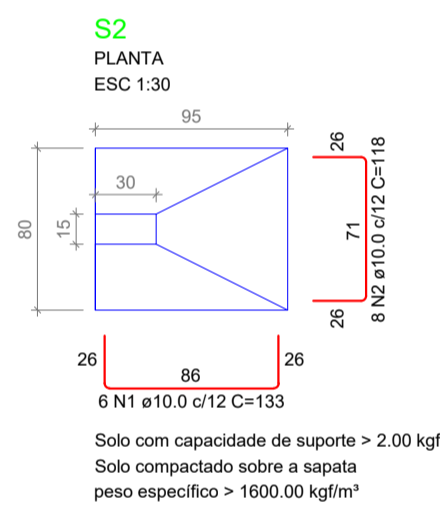
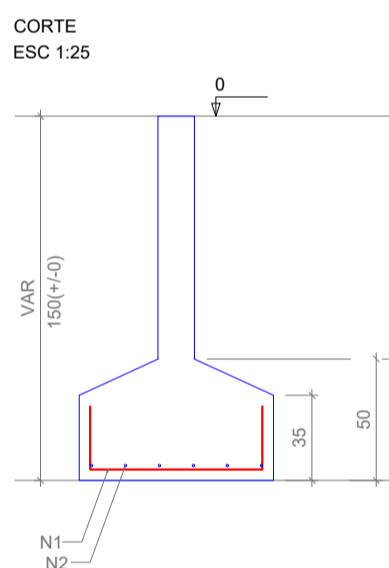
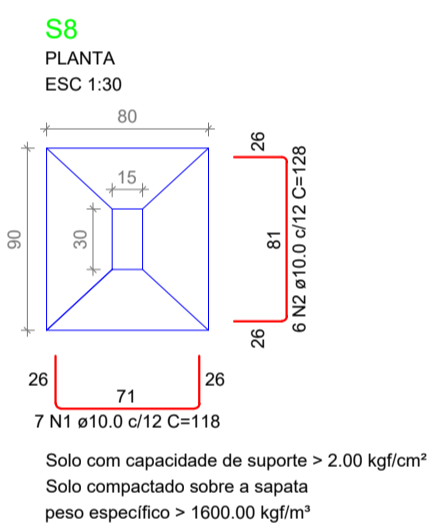
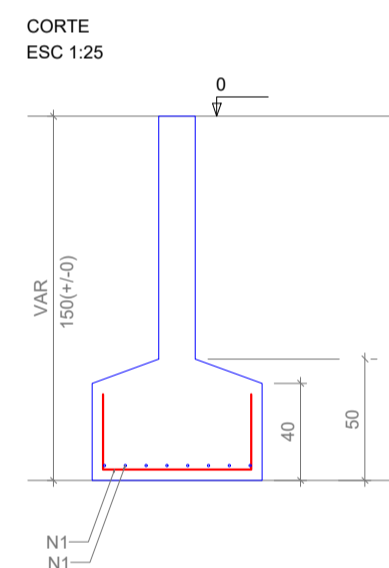
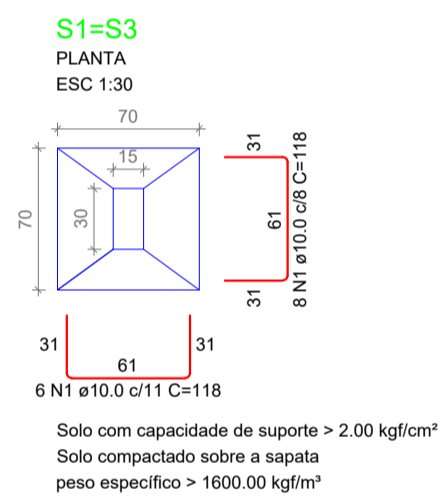


Vigas			
Nome	Seção (cm)	Elevação (cm)	Nível (cm)
V1	15x30	0	290
V2	15x30	0	290
V3	15x30	0	290
V4	15x30	0	290
V5	15x30	0	290
V6	15x35	0	290

Características dos materiais	
fck (kgf/cm²)	Ecs (kgf/cm³)
250	241500

Pilares			
Nome	Seção (cm)	Elevação (cm)	Nível (cm)
P1	15x30	0	290
P2	15x30	0	290
P3	15x30	0	290
P4	15x30	0	290
P5	15x30	0	290
P6	15x30	0	290
P7	15x30	0	290
P8	15x30	0	290

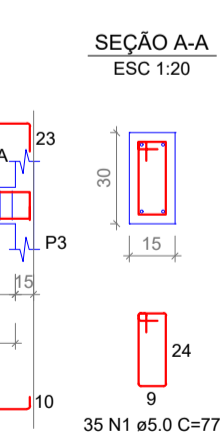
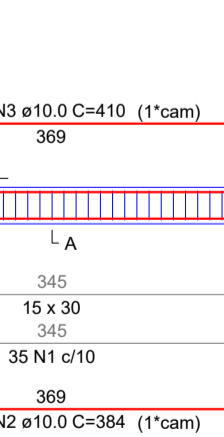
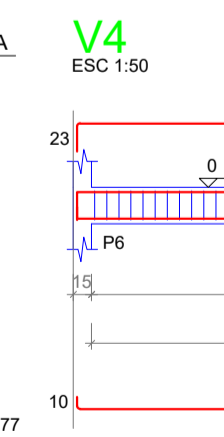
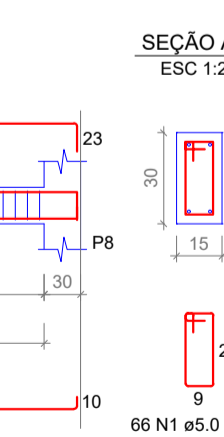
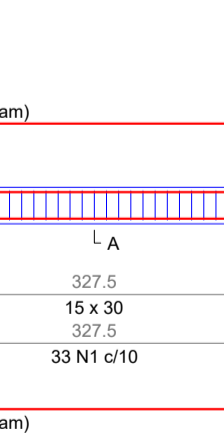
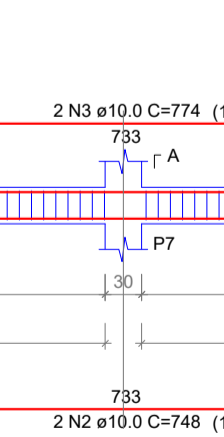
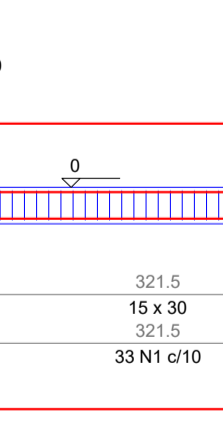
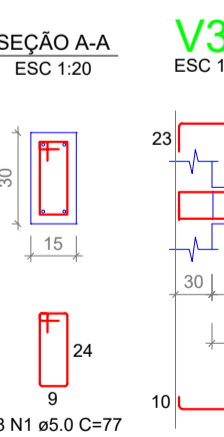
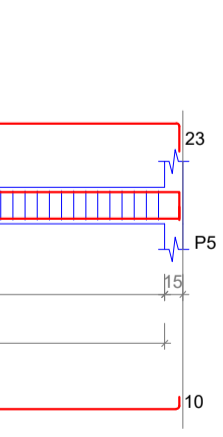
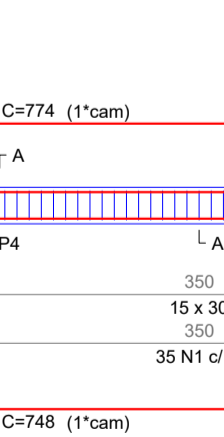
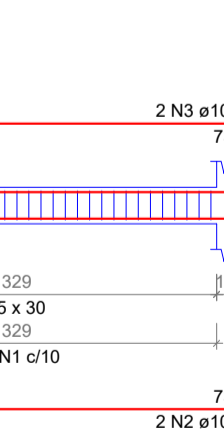
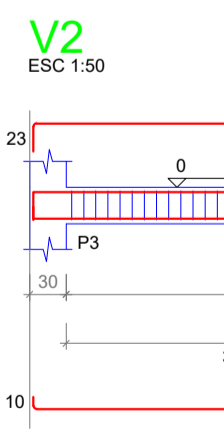
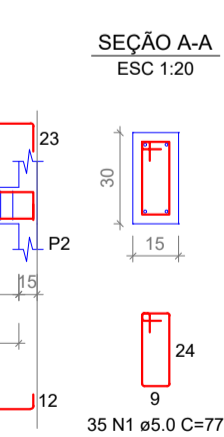
Legenda dos pilares  
 Pilar que passa



RELAÇÃO DO AÇO						
ELEMENTO	AÇO	N	DIAM (mm)	QUANT	C.UNIT (cm)	C.TOTAL (cm)
S1	CA50	1	10.0	28	118	3304
S2	CA50	1	10.0	6	133	798
S3	CA50	1	10.0	8	118	944
S4	CA50	1	10.0	7	138	966
S5	CA50	2	10.0	8	123	984
S6	CA50	1	10.0	8	128	1024
S7	CA50	2	10.0	7	133	931
S8	CA50	1	10.0	14	118	1652
S9	CA50	1	10.0	14	128	1792
S10	CA50	2	10.0	8	128	768

RESUMO DO AÇO			
AÇO	DIAM (mm)	C.TOTAL (m)	QUANT + 10% (Barras)
CA50	10.0	139.9	13
PESO TOTAL (kg)			
CA50		94.9	

Volume de concreto (C-25) = 2.41 m³  
 Área de forma = 9.95 m²



RELAÇÃO DO AÇO						
ELEMENTO	AÇO	N	DIAM (mm)	QUANT	C.UNIT (cm)	C.TOTAL (cm)
V1	CA60	1	5.0	35	77	2695
V2	CA50	2	10.0	2	391	782
V3	CA50	3	10.0	2	415	830
V4	CA60	1	5.0	68	77	5236
V5	CA50	2	10.0	2	748	1498
V6	CA60	1	5.0	66	77	5082
V7	CA50	2	10.0	2	748	1498
V8	CA50	3	10.0	2	774	1548
V9	CA60	1	5.0	35	77	2695
V10	CA50	2	10.0	2	384	768
V11	CA50	3	10.0	2	410	820
V12	CA60	1	5.0	88	77	6776
V13	CA50	2	10.0	2	901	1802
V14	CA50	3	10.0	2	985	1970
V15	CA60	1	5.0	88	77	6776
V16	CA50	2	10.0	2	961	1922
V17	CA50	3	10.0	1	205	205
V18	CA50	4	10.0	2	985	1970

RESUMO DO AÇO			
AÇO	DIAM (mm)	C.TOTAL (m)	QUANT + 10% (Barras)
CA50	10.0	172.8	16
CA60	5.0	292.6	16
PESO TOTAL (kg)			
CA50		117.2	
CA60		49.8	

Volume de concreto (C-25) = 1.70 m³  
 Área de forma = 29.30 m²

Prefeitura Municipal de Sericita  
 PROJETO ESTRUTURAL

PROPRIETÁRIO  
 Prefeitura Municipal de Sericita

OBRA  
 CONSTRUÇÃO DE DESPESA E SALA - ACADEMIA MUNICIPAL

ENDEREÇO  
 Rua José Ângelo Filho, Bairro Gomes Cardoso

TÍTULO  
 Locação, Formas, Sapata, Vigas Baldrame

TATIANE APARECIDA QUEIROZ VIANA  
 ENGENHEIRA CIVIL - CREA MG-214.170/D

DATA  
 ABRIL/2026

ESCALA  
 Indicada

FCX  
 CONFIDENTE/REVISOR  
 TATIANE APARECIDA QUEIROZ VIANA