

E3=P1=P2=P3=P4=P5

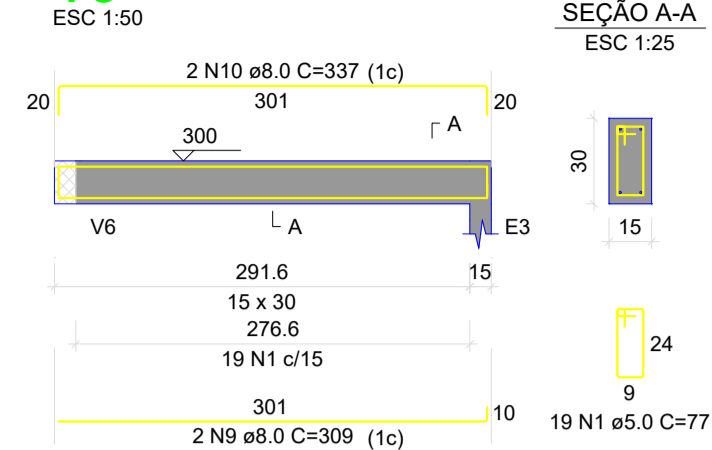
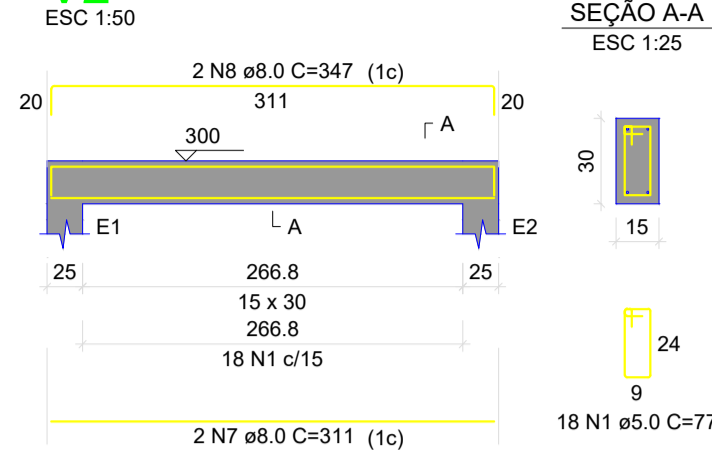
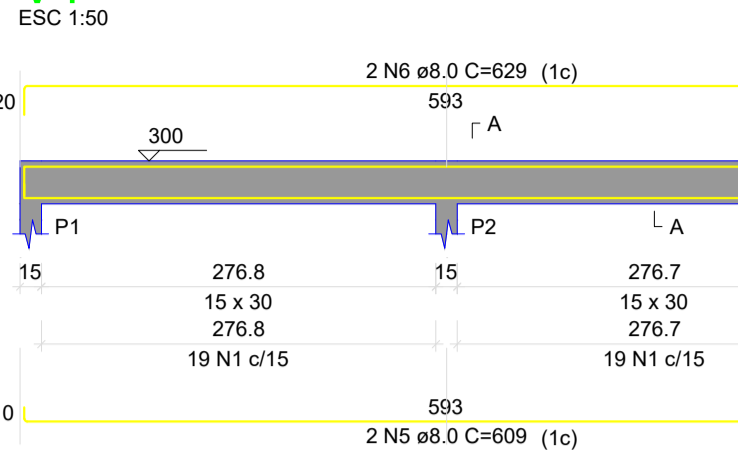
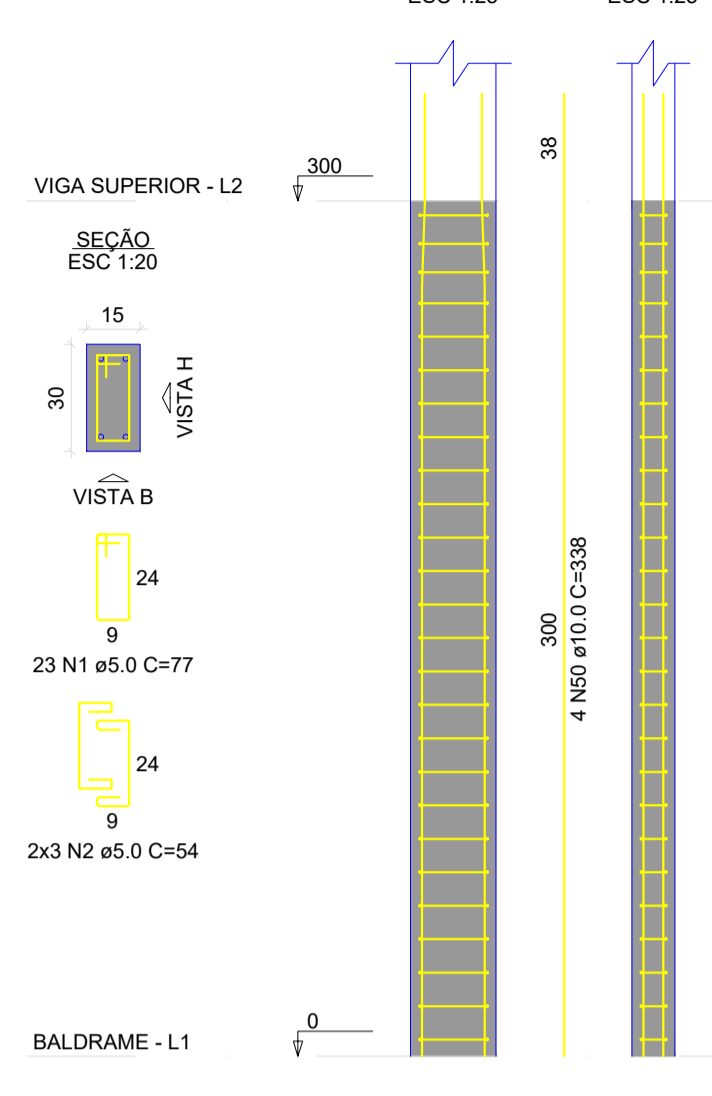
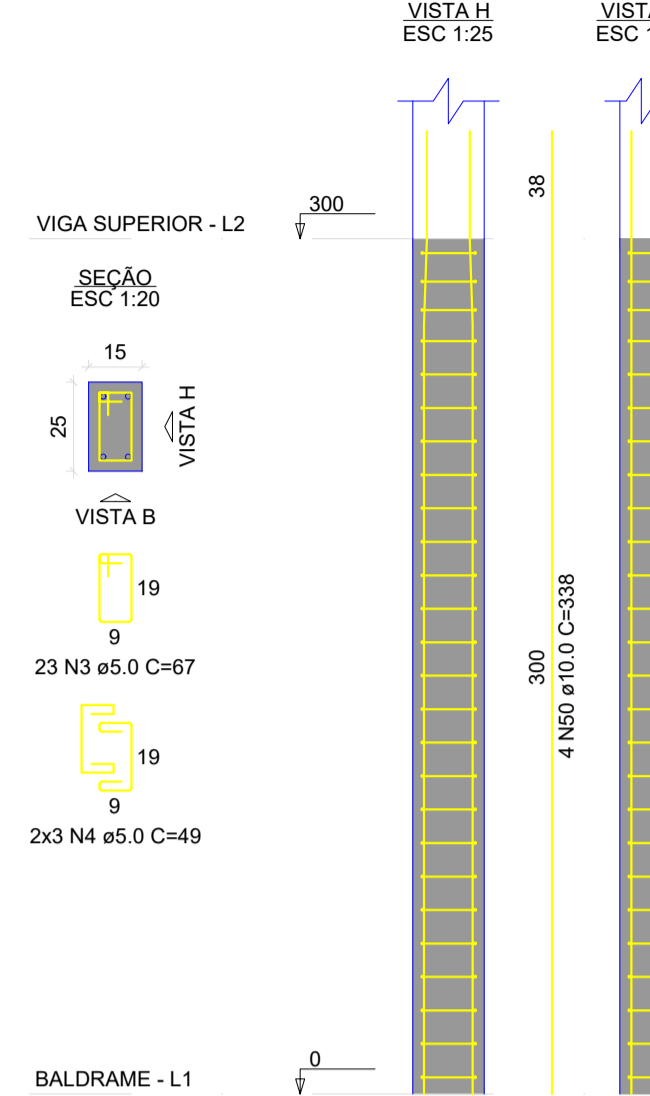
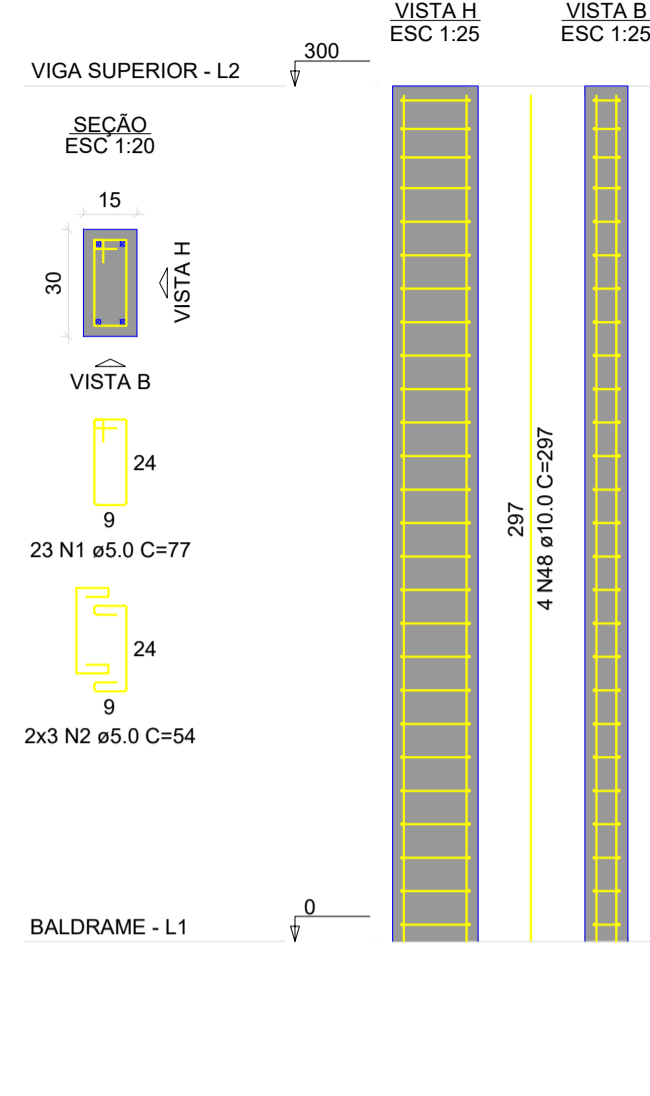
E7=E8=E9

P6

V1

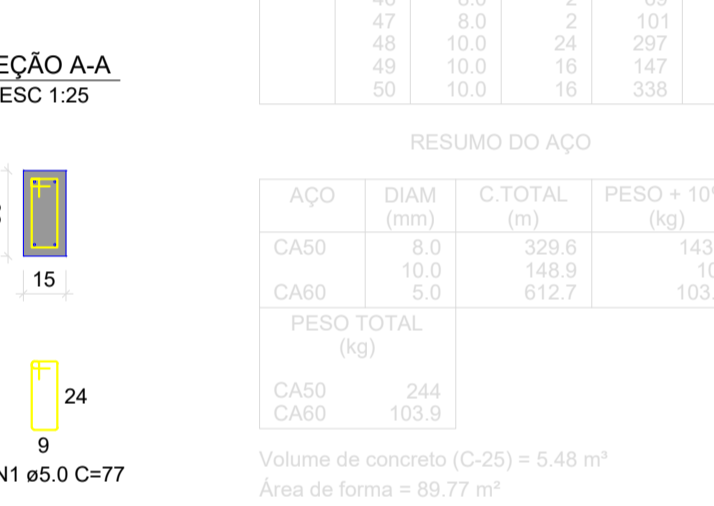
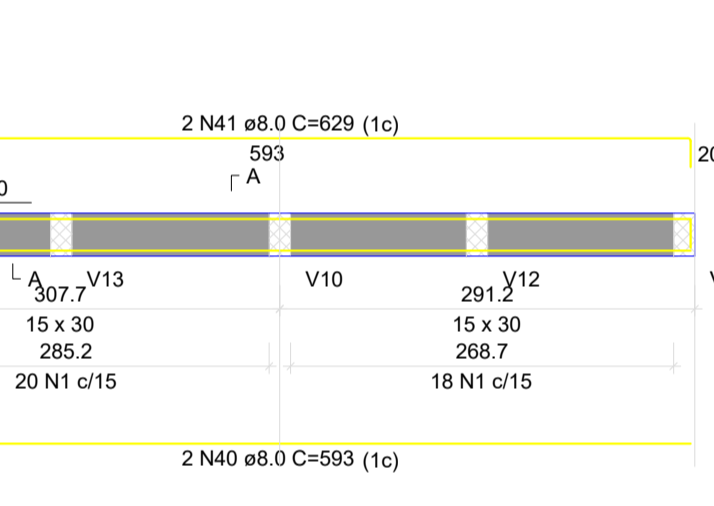
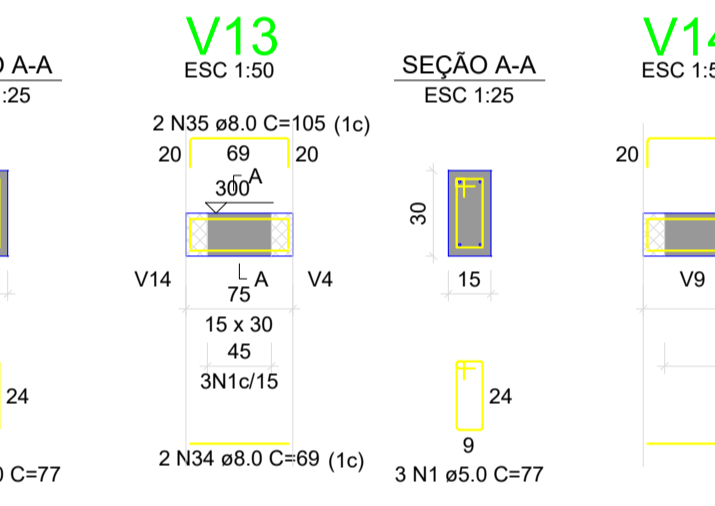
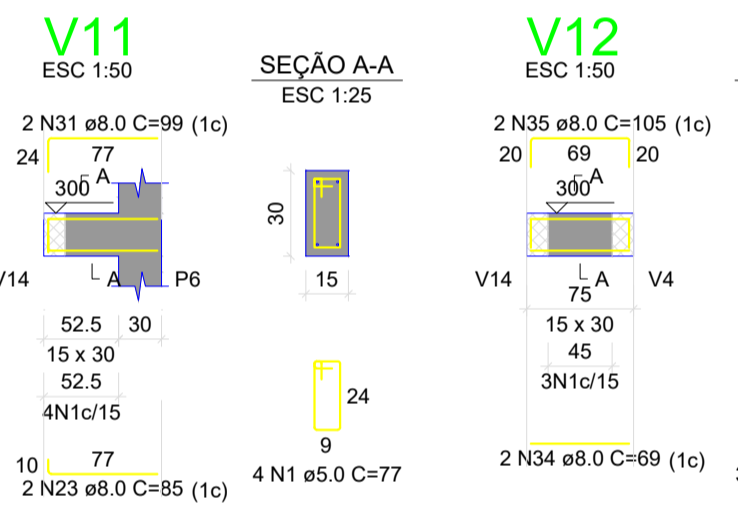
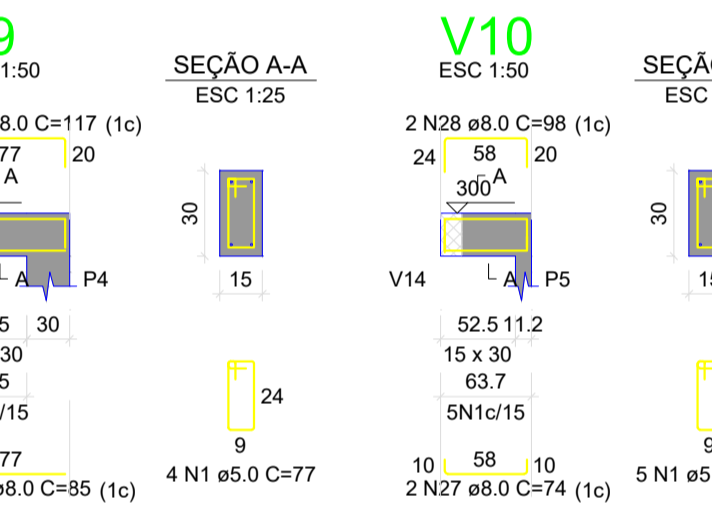
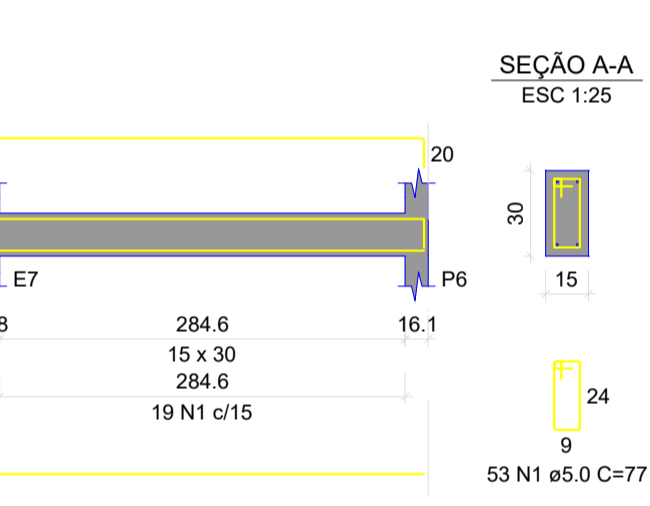
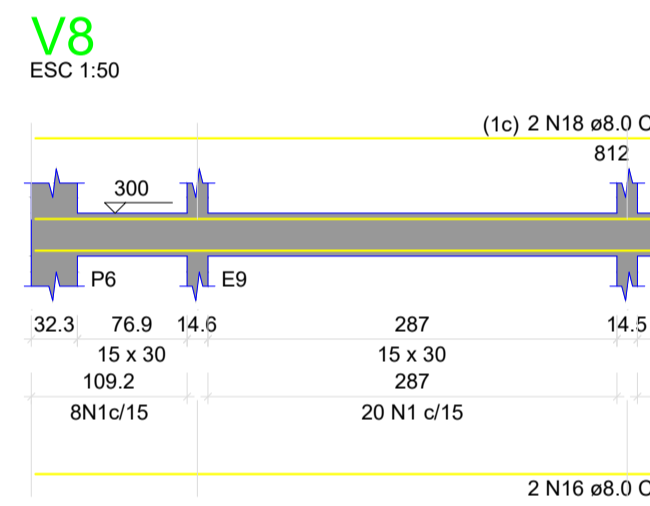
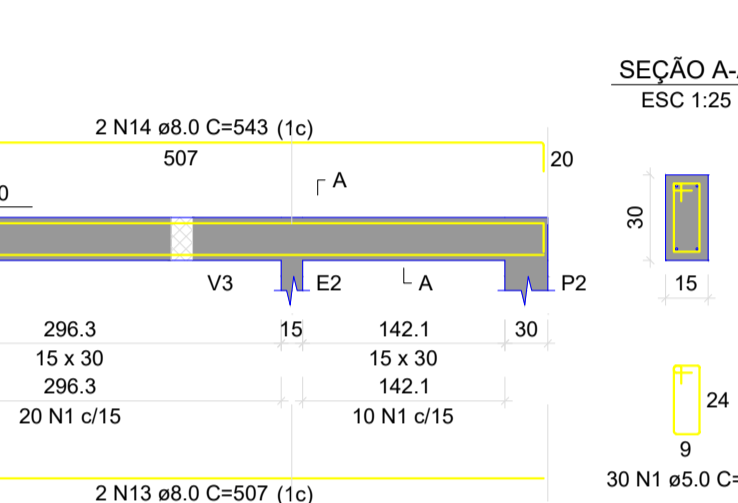
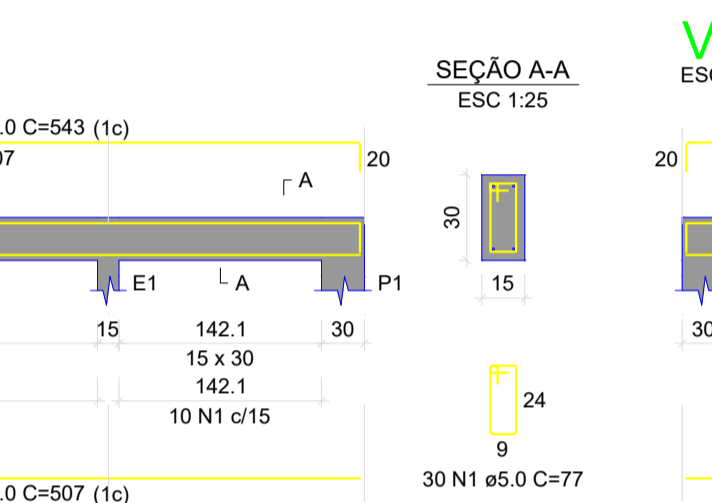
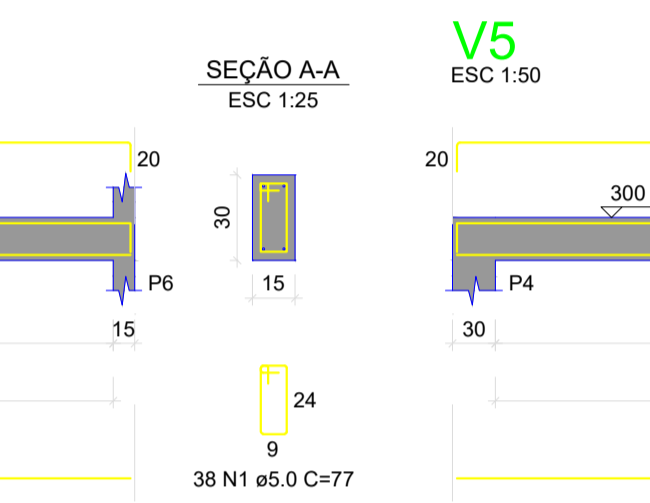
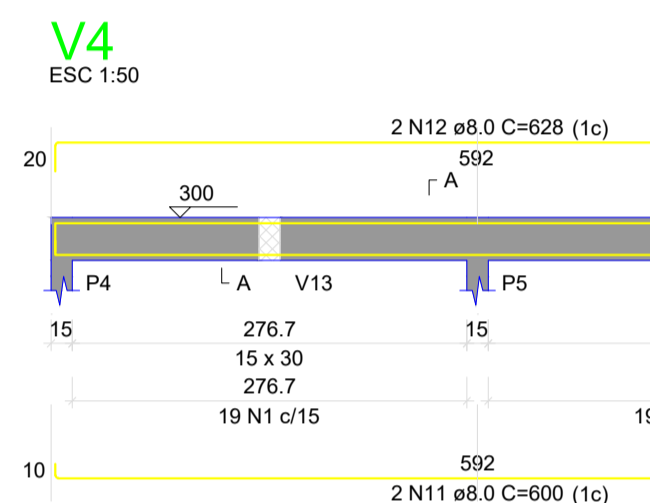
V2

V3



RELAÇÃO DO AÇO

ACO	N	DIAM (mm)	QUANT	C.UNIT (cm)	C.TOTAL (cm)
6xE3-L2	1	5.0	653	77	50281
6xE3-L2	2	5.0	48	54	2664
6xE3-L2	3	5.0	89	87	6933
6xE3-L2	4	5.0	36	49	1764
6xE3-L2	5	5.0	2	609	1218
6xE3-L2	6	5.0	2	629	1258
6xE3-L2	7	5.0	2	311	622
6xE3-L2	8	5.0	2	347	694
6xE3-L2	9	5.0	2	309	618
6xE3-L2	10	5.0	2	337	674
6xE3-L2	11	5.0	2	290	580
6xE3-L2	12	5.0	2	629	1258
6xE3-L2	13	5.0	6	507	3042
6xE3-L2	14	5.0	4	543	2172
6xE3-L2	15	5.0	2	525	1050
6xE3-L2	16	5.0	4	812	3248
6xE3-L2	17	5.0	2	348	696
6xE3-L2	18	5.0	2	830	1660
6xE3-L2	19	5.0	2	1133	2266
6xE3-L2	20	5.0	2	187	374
6xE3-L2	21	5.0	2	1156	2312
6xE3-L2	22	5.0	2	183	366
6xE3-L2	23	5.0	2	187	374
6xE3-L2	24	5.0	2	117	234
6xE3-L2	25	5.0	2	81	162
6xE3-L2	26	5.0	2	113	226
6xE3-L2	27	5.0	2	74	148
6xE3-L2	28	5.0	2	86	172
6xE3-L2	29	5.0	2	85	170
6xE3-L2	30	5.0	2	117	234
6xE3-L2	31	5.0	2	99	198
6xE3-L2	32	5.0	2	83	166
6xE3-L2	33	5.0	2	115	230
6xE3-L2	34	5.0	4	69	276
6xE3-L2	35	5.0	4	105	420
6xE3-L2	36	5.0	2	79	158
6xE3-L2	37	5.0	2	111	222
6xE3-L2	38	5.0	2	89	178
6xE3-L2	39	5.0	2	100	200
6xE3-L2	40	5.0	2	293	586
6xE3-L2	41	5.0	2	629	1258
6xE3-L2	42	5.0	2	71	142
6xE3-L2	43	5.0	2	103	206
6xE3-L2	44	5.0	2	75	150
6xE3-L2	45	5.0	2	107	214
6xE3-L2	46	5.0	2	69	138
6xE3-L2	47	5.0	2	101	202
6xE3-L2	48	10.0	54	297	7126
6xE3-L2	49	10.0	16	147	2352
6xE3-L2	50	10.0	16	338	5408



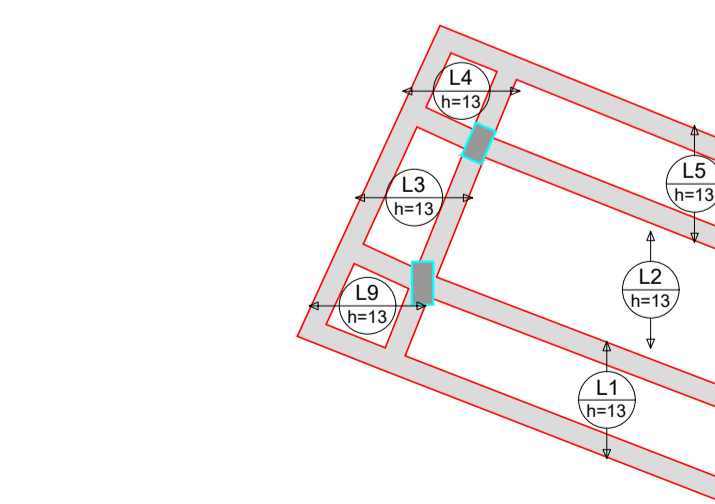
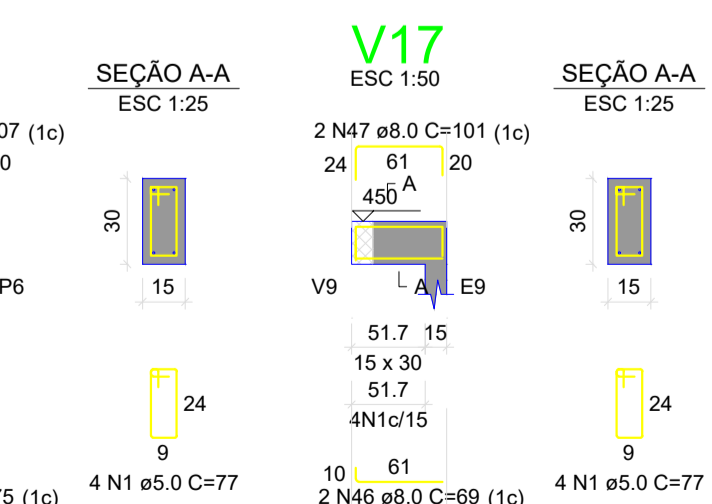
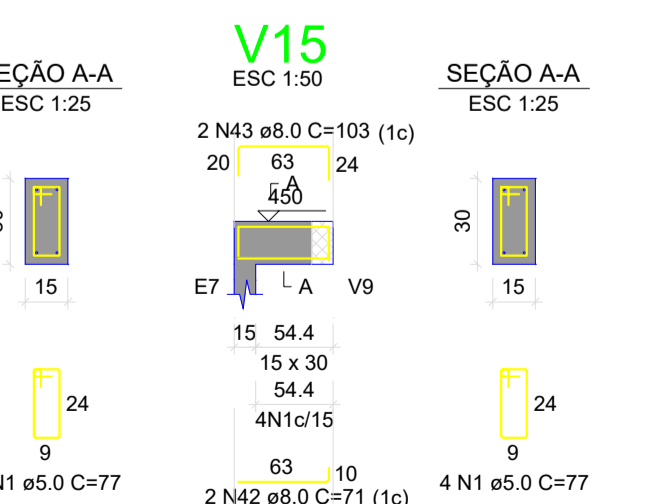
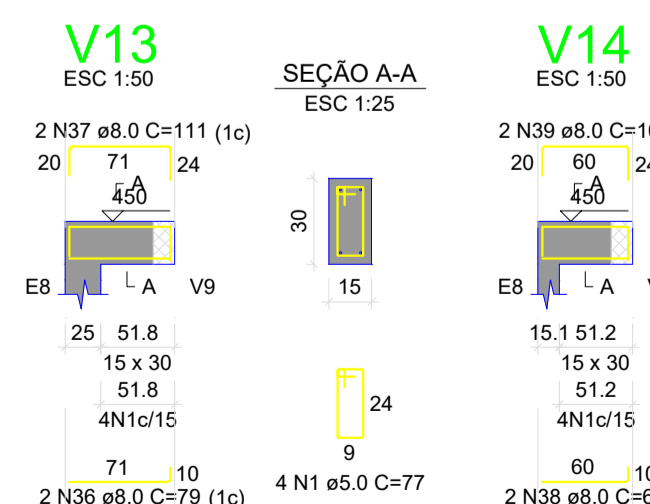
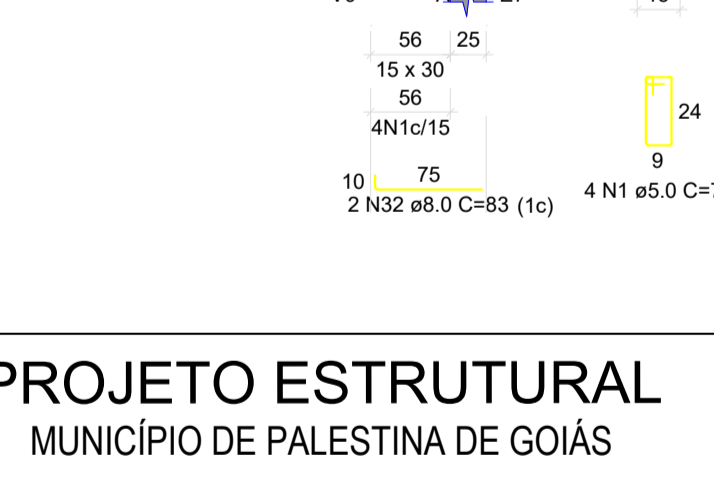
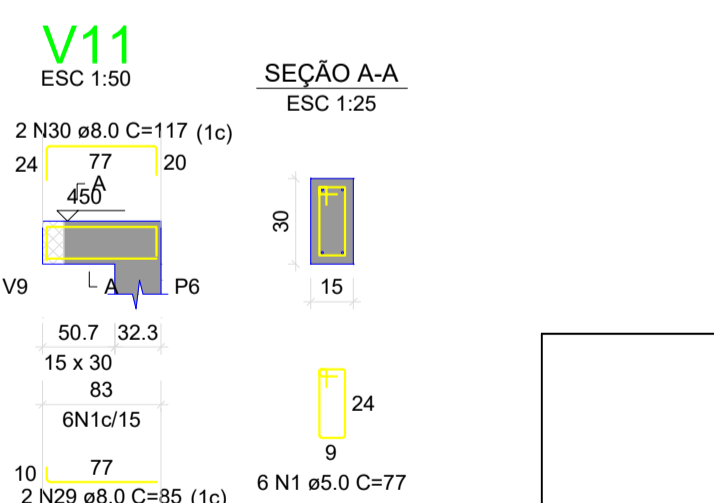
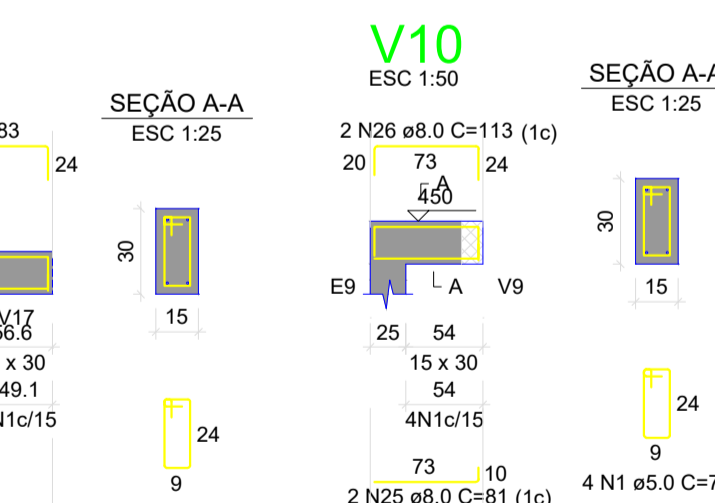
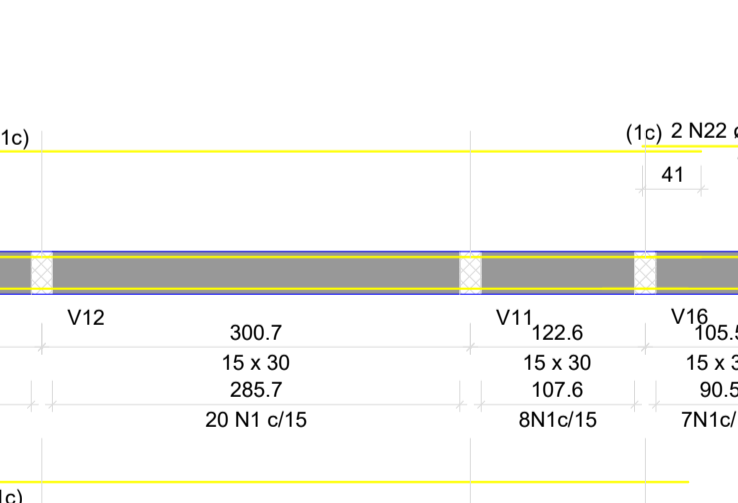
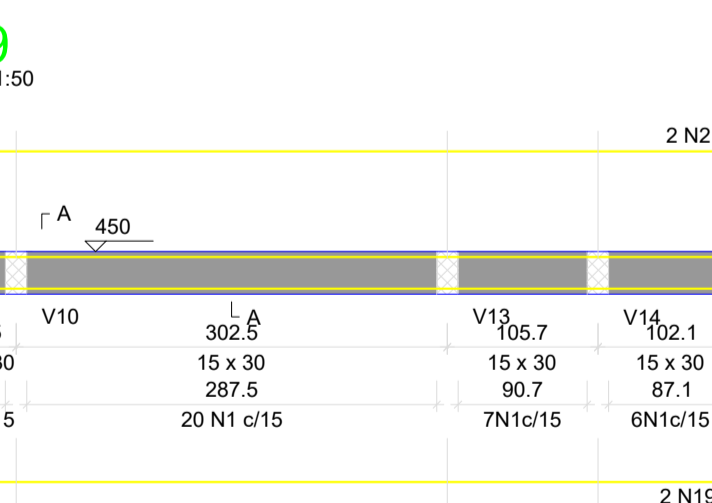
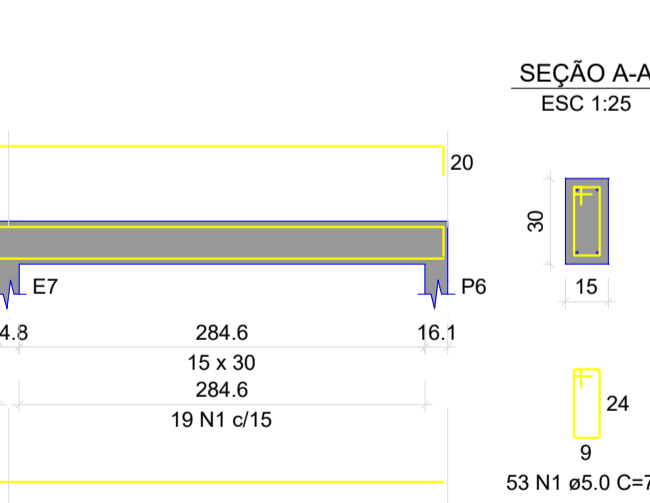
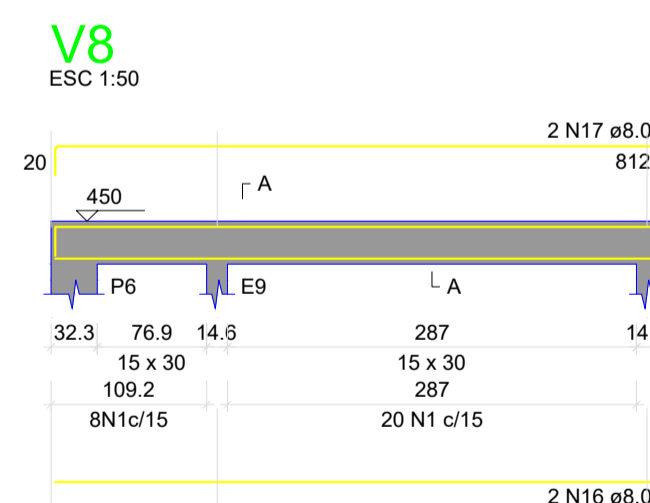
RESUMO DO AÇO

ACO	DIAM (mm)	C.TOTAL (m)	PESO + 10% (kg)
CA50	5.0	329.6	143.1
CA50	10.0	148.9	101
CA60	5.0	612.7	103.9
PESO TOTAL (kg)			
CA50		244	
CA60		103.9	

Volume de concreto (C-25) = 5.48 m³
Área de forma = 89.77 m²

Armação positiva das lajes do pavimento VIGA SUPERIOR (Eixo Y)

Planta de vigotas pré-moldadas



Armação positiva das lajes do pavimento Pavimento (Eixo X)

PROJETO ESTRUTURAL
MUNICÍPIO DE PALESTINA DE GOIÁS

PRANCHA 04/04

PROPRIETÁRIO:	CONTEÚDO:
MUNICÍPIO DE PALESTINA DE GOIÁS - CNPJ:11.306.532/0001-78	ESTRUTURAL
AUTOR DO PROJETO:	
ELISMAR MARTINS LOURENÇO ENGENHEIRO CIVIL - CREA 1018287/520-GO	
QUADRO DE ÁREAS:	
CONSTRUÇÃO DE INFRAESTRUTURA DO CLUBE MUNICIPAL DE RODEIO	
DATA JUNHO/2026	ESCALA INDICADA
ARQUIVO Locação.dwg	DESENHO: ELISMAR LOURENÇO