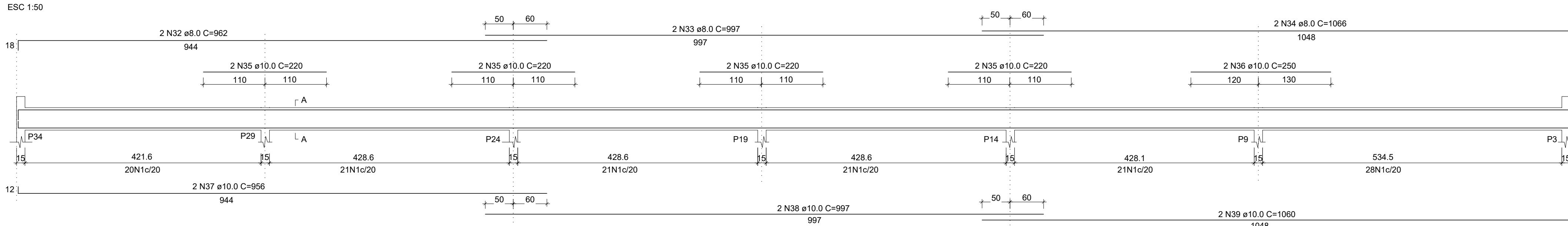


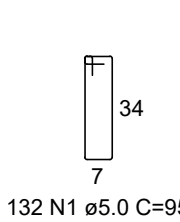
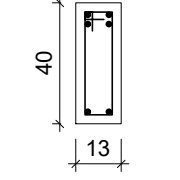
PLANTA DE FORMA - VIGAS PISO  
Escala 1:75

#### V10 (13X40)

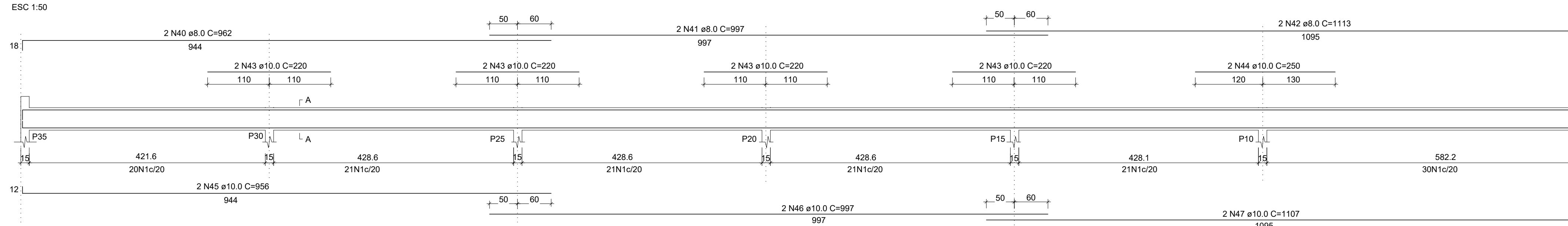


#### SEÇÃO A-A

ESC 1:25

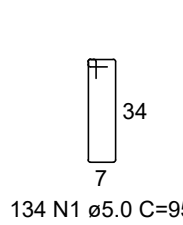
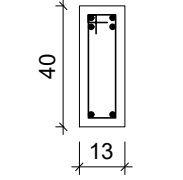


#### V11 (13X40)

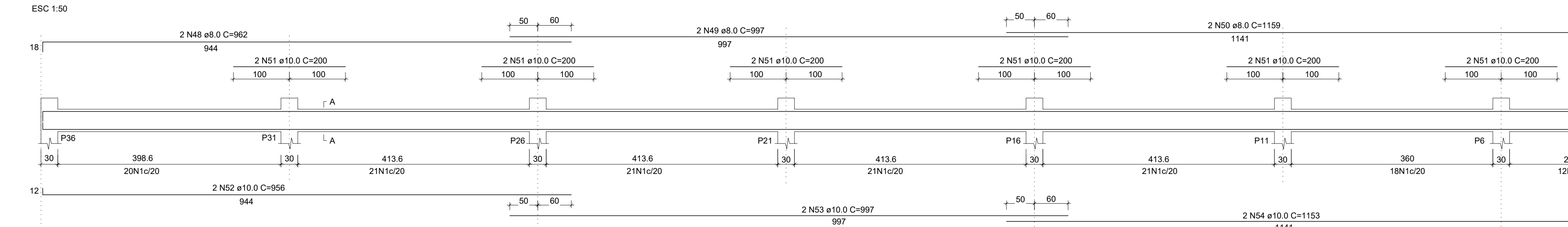


#### SEÇÃO A-A

ESC 1:25

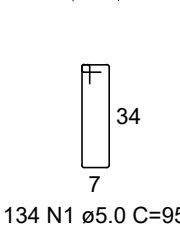
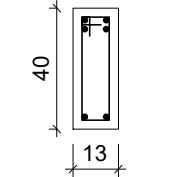


#### V12 (13X40)

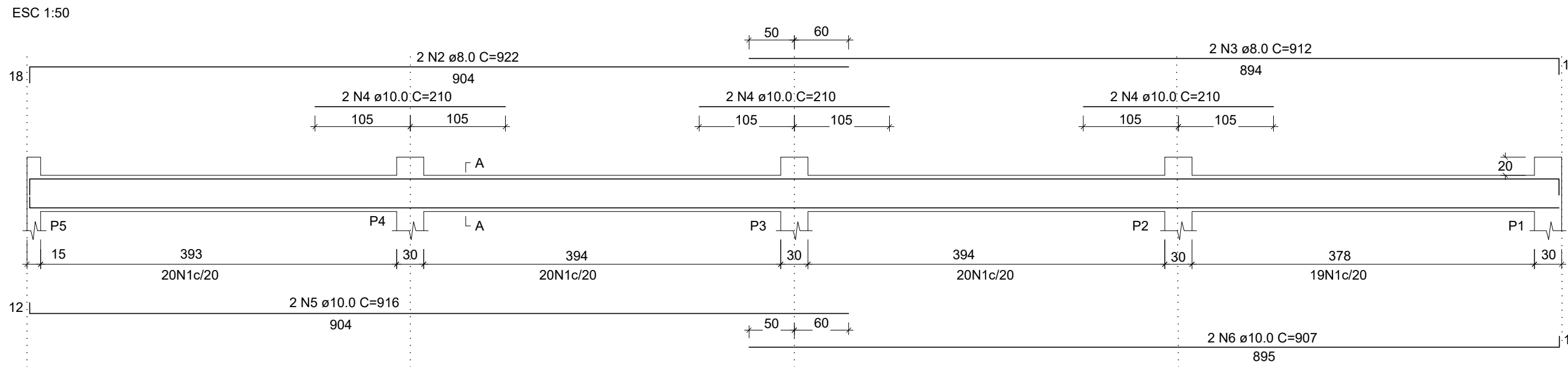


#### SEÇÃO A-A

ESC 1:25

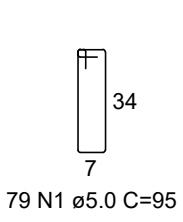
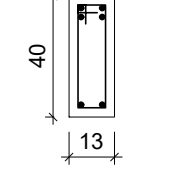


#### V1 (13X40)

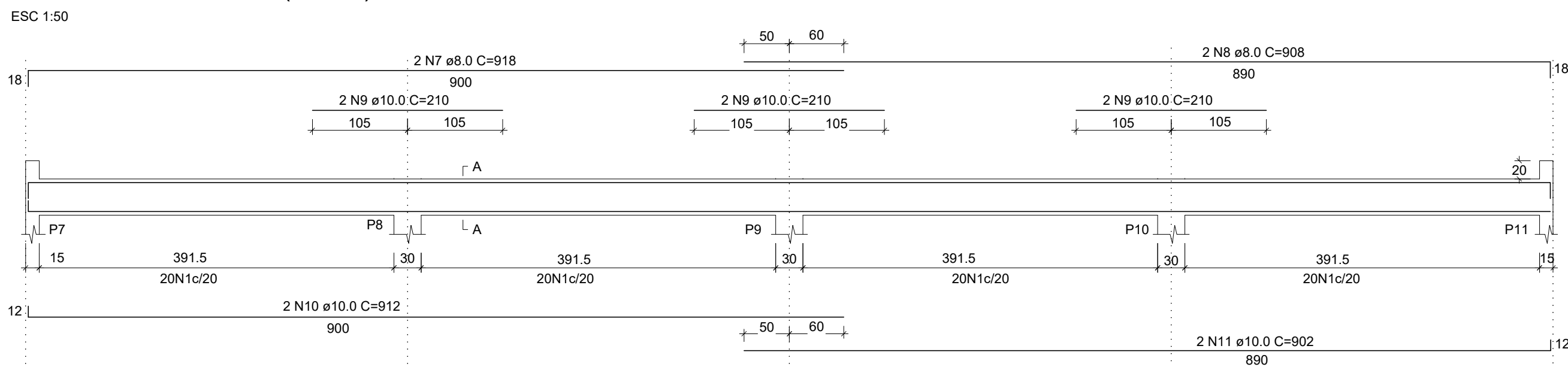


#### SEÇÃO A-A

ESC 1:25

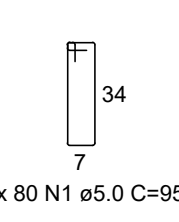
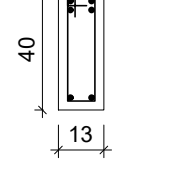


#### V2 = V3 = V4 = V5 = V6 (13X40)

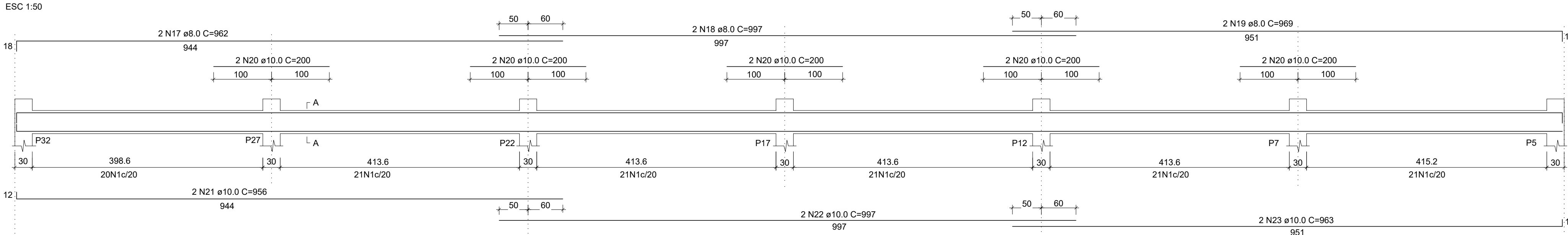


#### SEÇÃO A-A

ESC 1:25

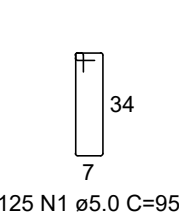
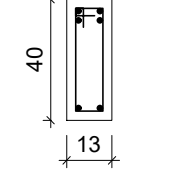


#### V8 (13X40)

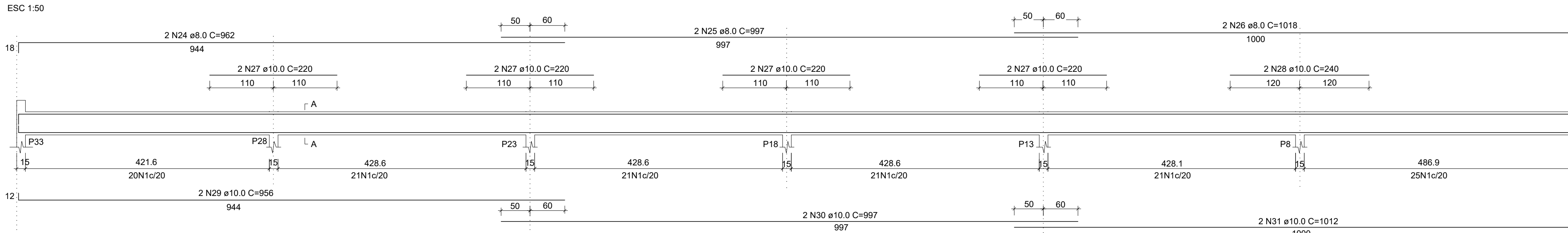


#### SEÇÃO A-A

ESC 1:25

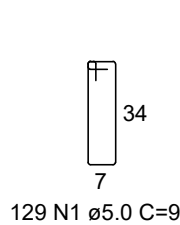
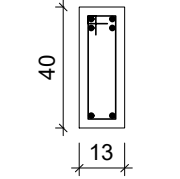


#### V9 (13X40)

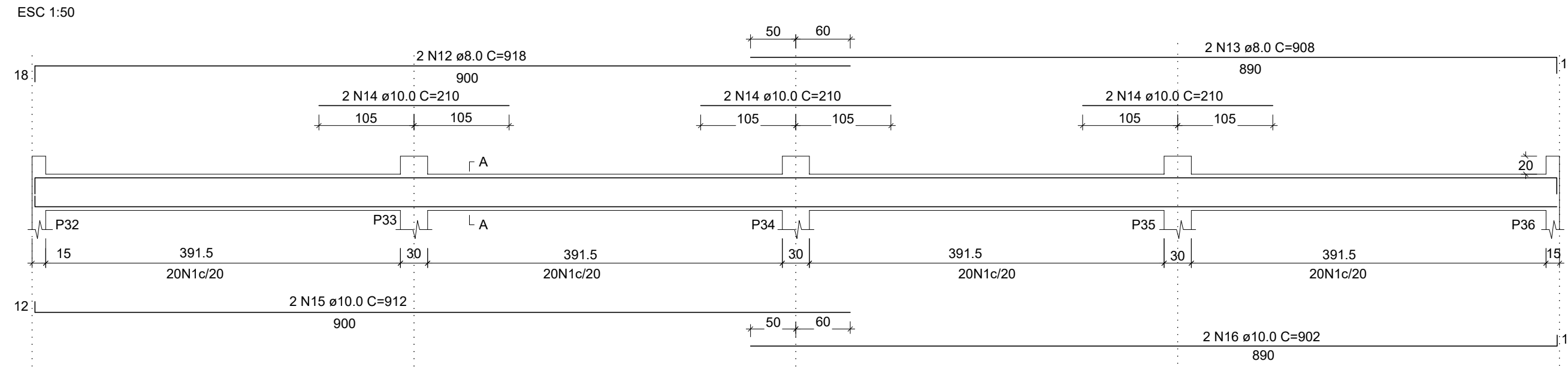


#### SEÇÃO A-A

ESC 1:25

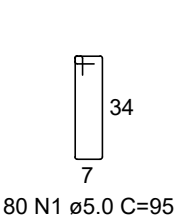
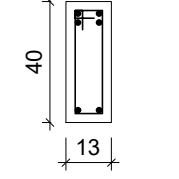


#### V7 (13X40)



#### SEÇÃO A-A

ESC 1:25



ACO	NÚMERO (N)	DIAM. (mm)	QUANT.	COMP. UNIT. (cm)	COMP. TOTAL (cm)	TOTAL (M)
CA-60	1	5,0	1213	95	115235	1.152,35
	2	8,0	2	922	1844	18,44
	3	8,0	2	912	1824	18,24
	4	10,0	6	210	1260	12,60
	5	10,0	2	916	1832	18,32
	6	10,0	2	907	1814	18,14
	7	8,0	10	918	9180	91,80
	8	8,0	10	908	9080	90,80
	9	10,0	30	210	6300	63,00
	10	10,0	10	912	9120	91,20
CA-50	11	10,0	10	902	9020	90,20
	12	8,0	2	918	1836	18,36
	13	8,0	2	908	1816	18,16
	14	10,0	6	210	1260	12,60
	15	10,0	2	912	1824	18,24
	16	10,0	2	902	1804	18,04
	17	8,0	2	962	1924	19,24
	18	8,0	2	997	1994	19,94
	19	8,0	2	969	1938	19,38
	20	10,0	10	200	2000	20,00
	21	10,0	2	956	1912	19,12
	22	10,0	2	997	1994	19,94
	23	10,0	2	963	1926	19,26
	24	8,0	2	962	1924	19,24
	25	8,0	2	997	1994	19,94
	26	8,0	2	1018	2036	20,36
	27	10,0	8	220	1760	17,60
	28	10,0	2	240	480	4,80
	29	10,0	2	956	1912	19,12
	30	10,0	2	997	1994	19,94
	31	10,0	2	1012	2024	20,24
	32	8,0	2	962	1924	19,24
	33	8,0	2	997	1994	19,94
	34	8,0	2	1066	2132	21,32
	35	10,0	8	220	1760	17,60
	36	10,0	2	250	500	5,00
	37	10,0	2	956	1912	19,12
	38	10,0	2	997	1994	19,94
	39	10,0	2	1060	2120	21,20
	40	8,0	2	962	1924	19,24
	41	8,0	2	997	1994	19,94
	42	8,0	2	1113	2226	22,26
	43	10,0	8	220	1760	17,60
	44	10,0	2	250	500	5,00
	45	10,0	2	956	1912	19,12
	46	10,0	2	997	1994	19,94
	47	10,0	2	1107	2214	22,14
	48	8,0	2	962	1924	19,24
	49	8,0	2	997	1994	19,94
	50	8,0	2	1119	2238	22,38
	51	10,0	12	200	2400	24,00
	52	10,0	2	956	1912	19,12
	53	10,0	2	997	1994	19,94
	54	10,0	2	1153	2306	23,06

RESUMO DO AÇO			
ACO	DIAM. (mm)	NOMINAL (kg/m)	PESO (KG)
CA-50	10,0	0,617	465,50
CA-50	8,0	0,395	220,40
CA-60	5,0	0,154	177,46
PESO TOTAL (KG)			
CA-50	886,41		
CA-60	177,46		

VOLUME DE CONCRETO (C-20) VIGAS: 13,46 m³  
ÁREA DE FORMA: 207,13 m²

PROJETO ESTRUTURAL PARA CONSTRUÇÃO DE QUADRA POLIESPORTIVA, SITUADA À RUA OSCAR CARNEIRO CAVALCANTE, S/N, BAIRRO BHERTO BARROS, MIRACEMA/RJ

DESCRIÇÃO DA PRANCHA:

- PLANTA DE FORMA DAS VIGAS DE PISO DA QUADRA;
- DETALHAMENTO DAS ESTRUTURAS DAS VIGAS DE PISO DA QUADRA

PROPRIETÁRIO: Prefeitura Municipal de Miracema

PROJETO: Elenilde Araujo de Oliveira  
Eng. Civil - CREA RJ 2001109101

DESENHO:

Elenilde Araujo de Oliveira  
Eng. Civil - CREA RJ 2001109101

ESCALAS: indicadas

DATA: 11/2025

PRANCHA:

2/3



Governo do Estado do Rio de Janeiro  
**PREFEITURA MUNICIPAL DE MIRACEMA**  
SECRETARIA MUNICIPAL DE OBRAS E URBANISMO