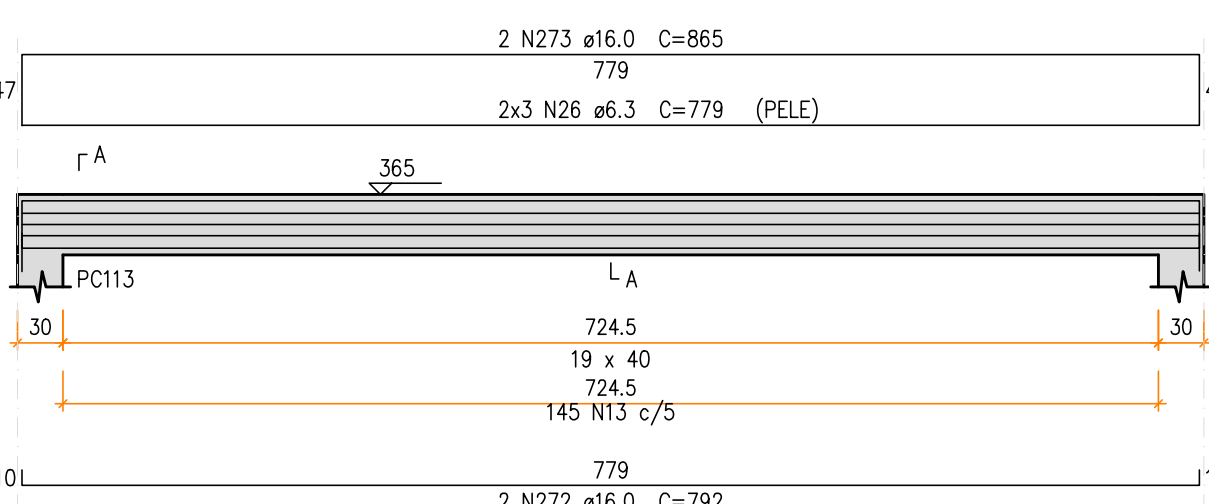
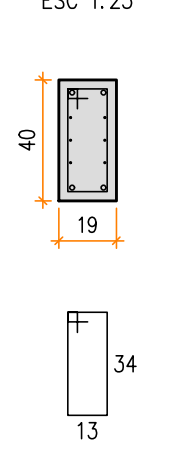


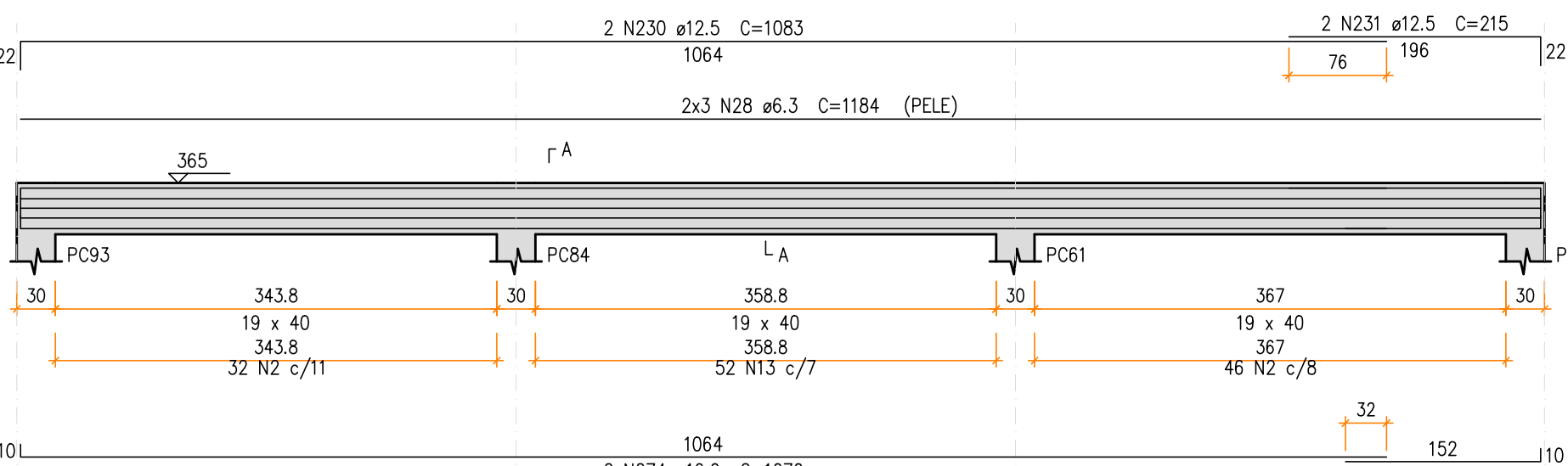
VC2032 (19 x 40)
ESC 1:50



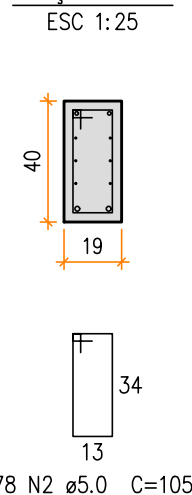
SEÇÃO A-A
ESC 1:25



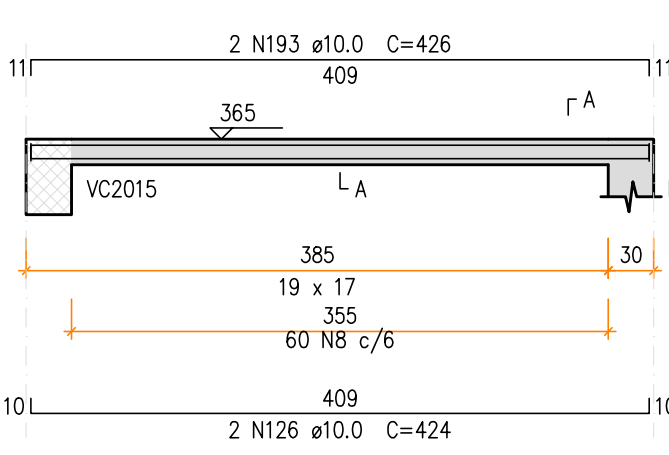
VC2035 (19 x 40)
ESC 1:50



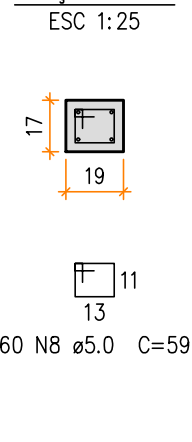
SEÇÃO A-A
ESC 1:25



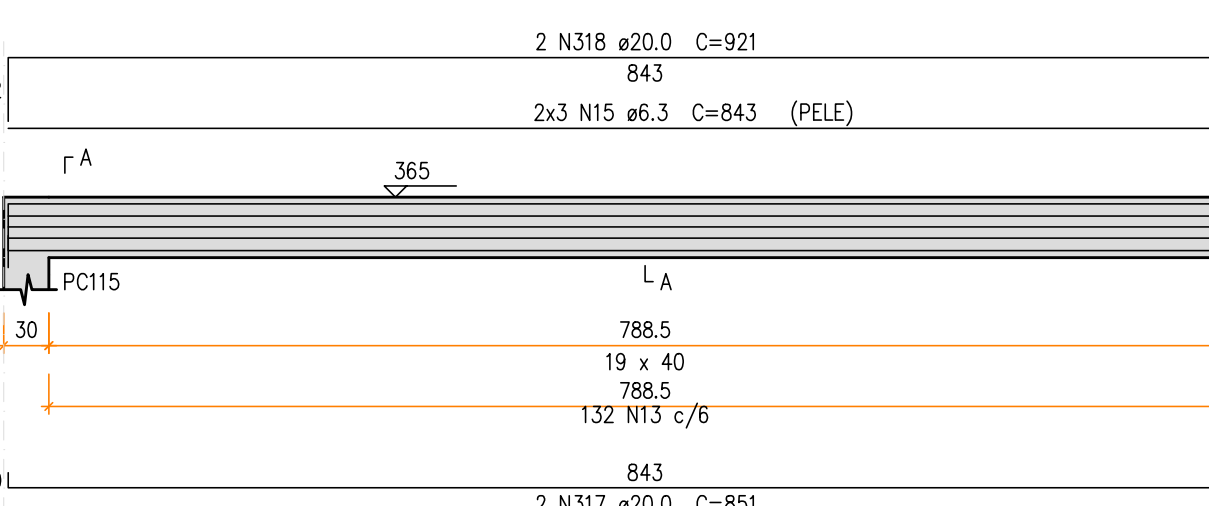
VC2040 (19 x 17)
ESC 1:50



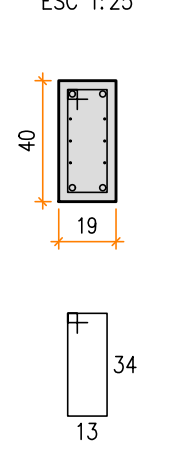
SEÇÃO A-A
ESC 1:25



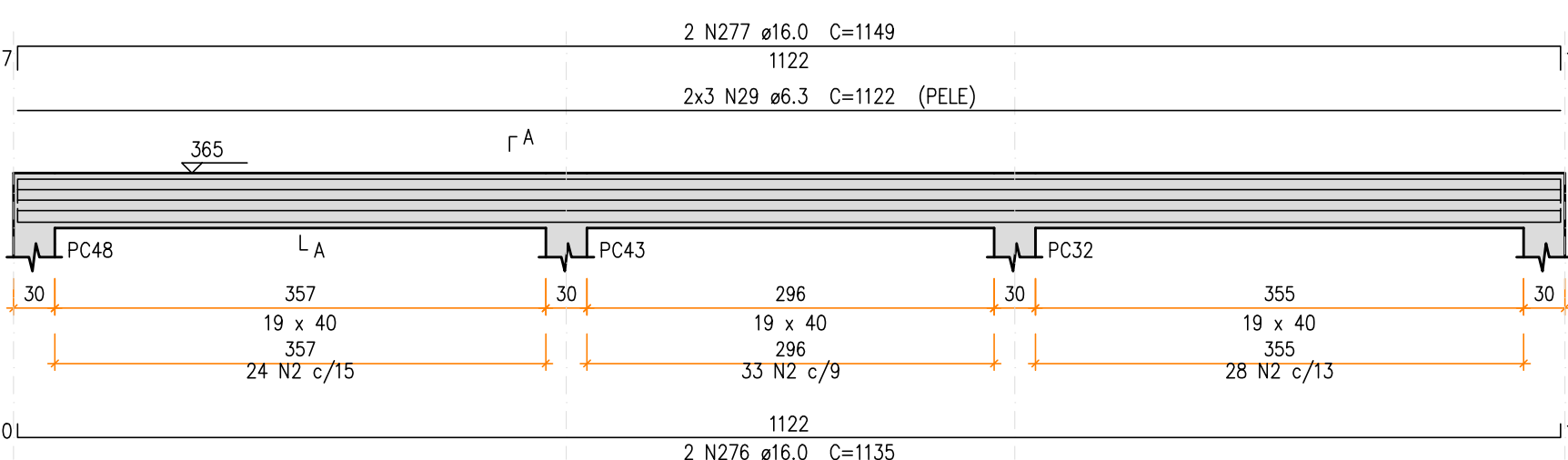
VC2034 (19 x 40)
ESC 1:50



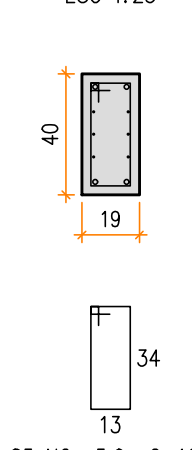
SEÇÃO A-A
ESC 1:25



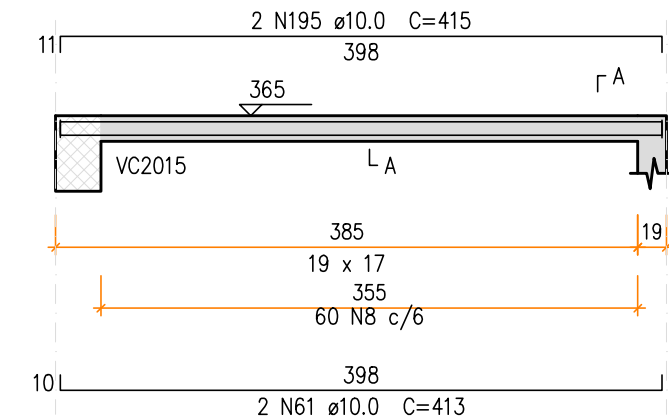
VC2036 (19 x 40)
ESC 1:50



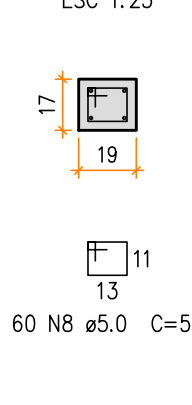
SEÇÃO A-A
ESC 1:25



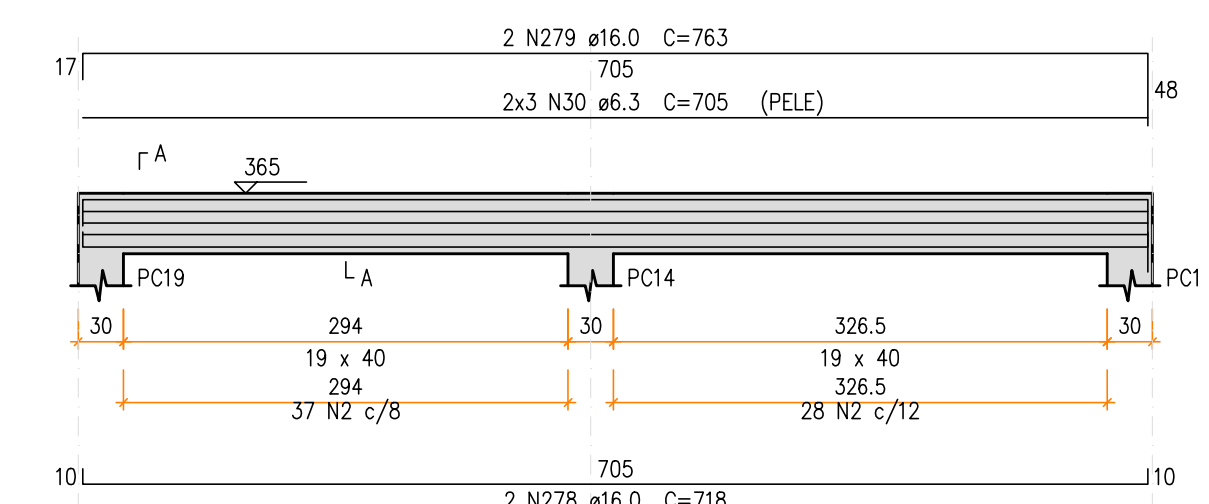
VC2042 (19 x 17)
ESC 1:50



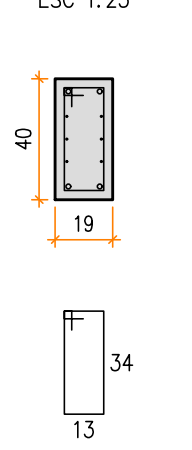
SEÇÃO A-A
ESC 1:25



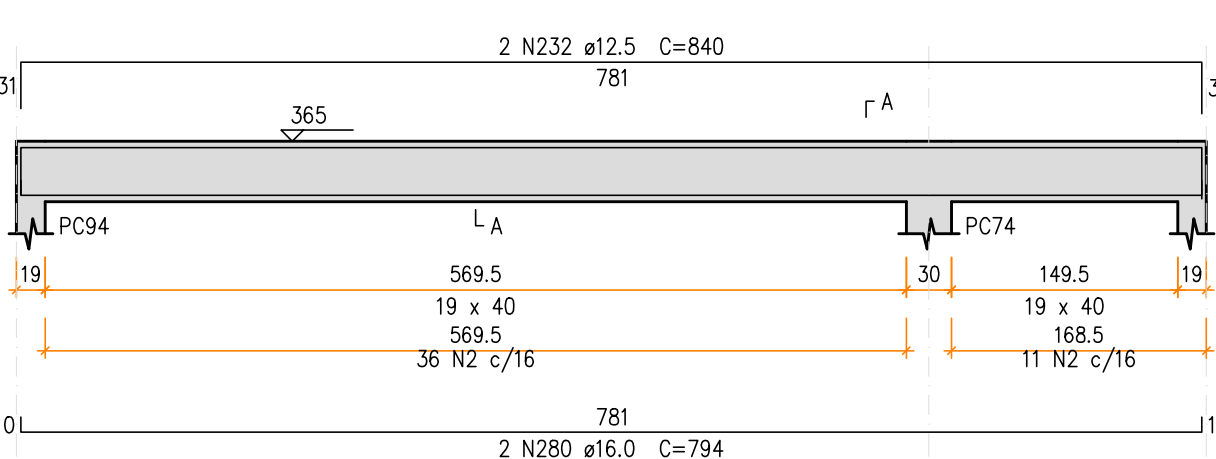
VC2037 (19 x 40)
ESC 1:50



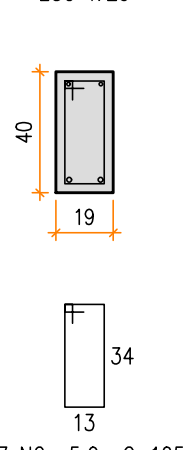
SEÇÃO A-A
ESC 1:25



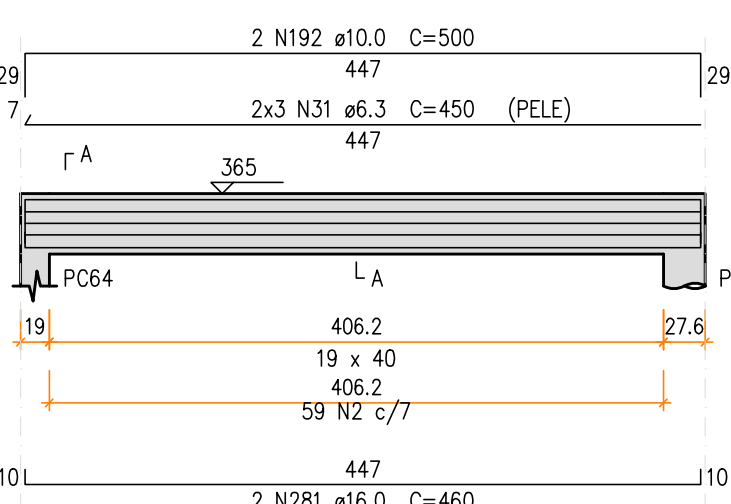
VC2038 (19 x 40)
ESC 1:50



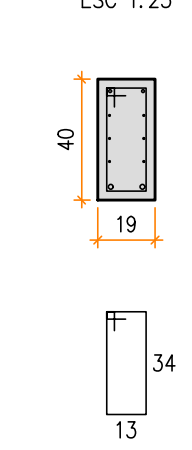
SEÇÃO A-A
ESC 1:25



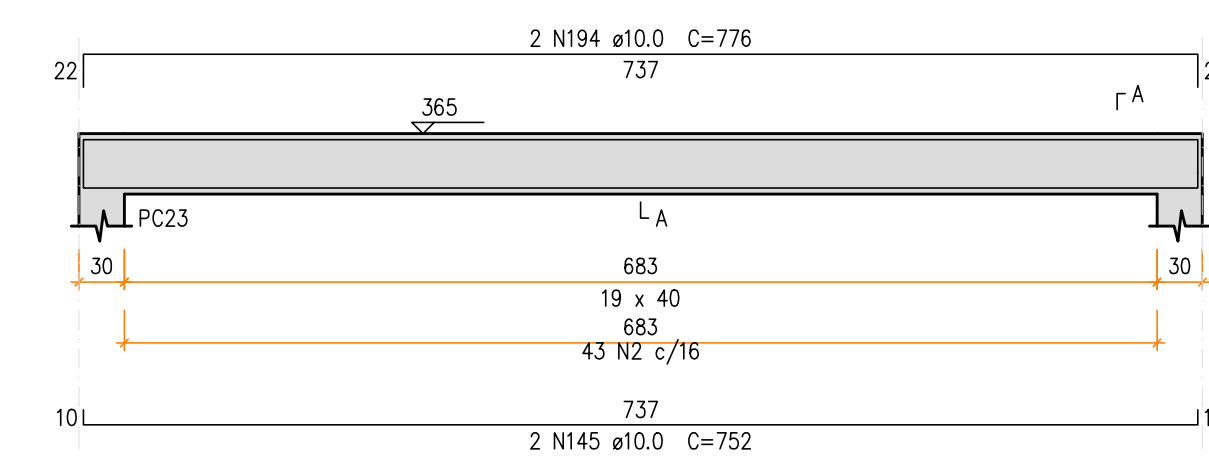
VC2039 (19 x 40)
ESC 1:50



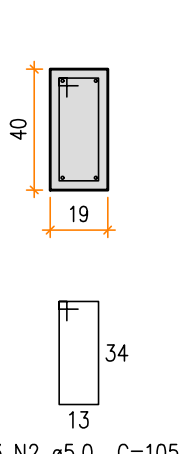
SEÇÃO A-A
ESC 1:25



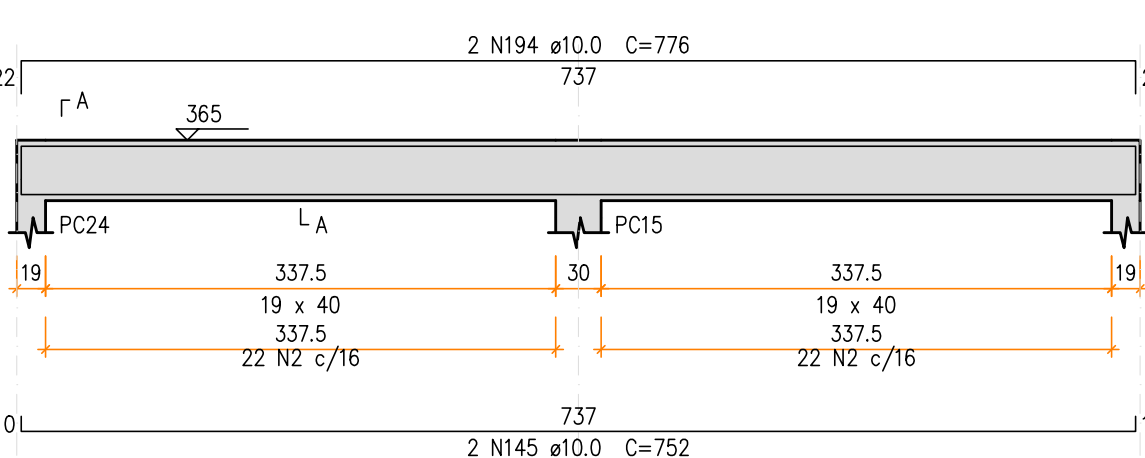
VC2041 (19 x 40)
ESC 1:50



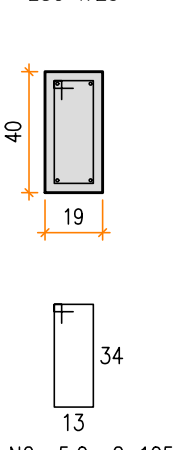
SEÇÃO A-A
ESC 1:25



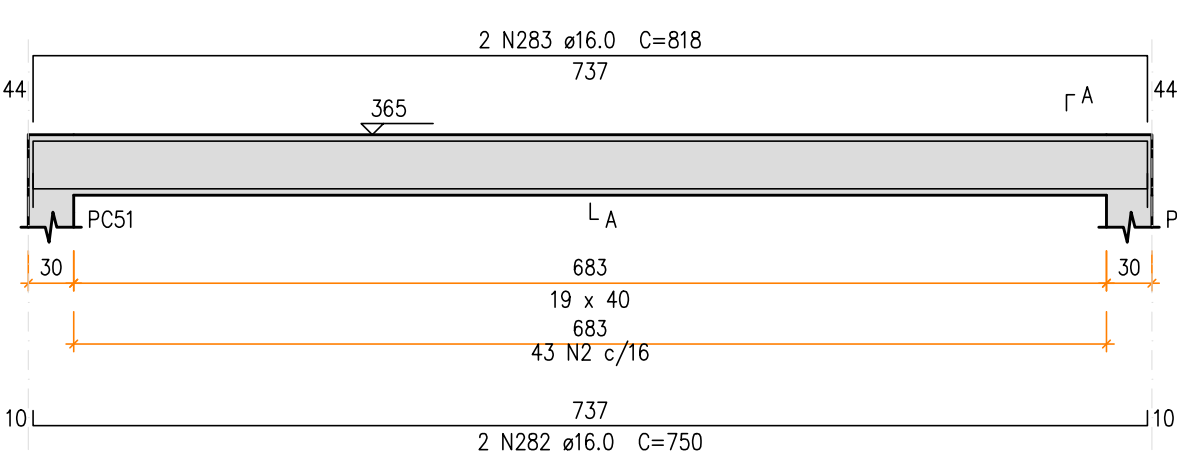
VC2043 (19 x 40)
ESC 1:50



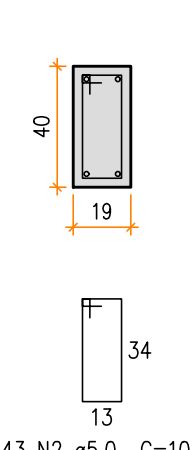
SEÇÃO A-A
ESC 1:25



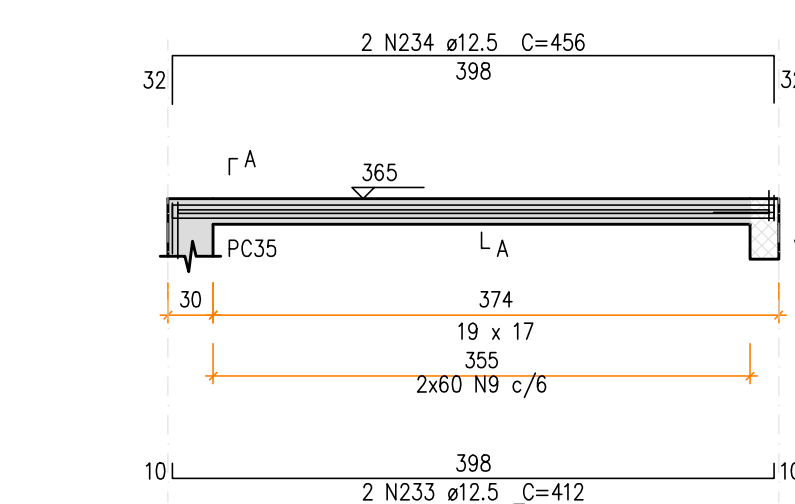
VC2044 (19 x 40)
ESC 1:50



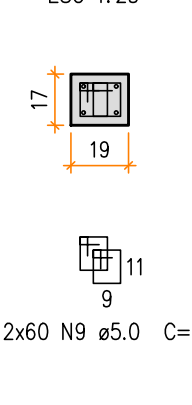
SEÇÃO A-A
ESC 1:25



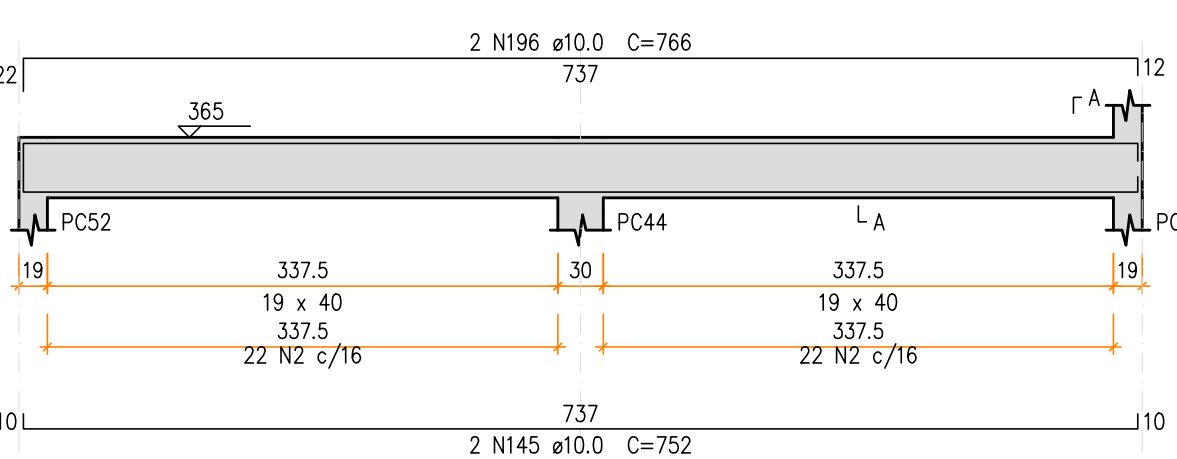
VC2045 (19 x 17)
ESC 1:50



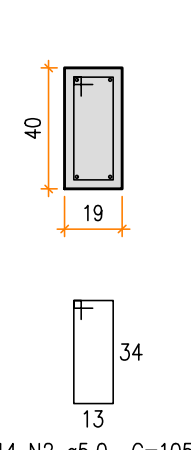
SEÇÃO A-A
ESC 1:25



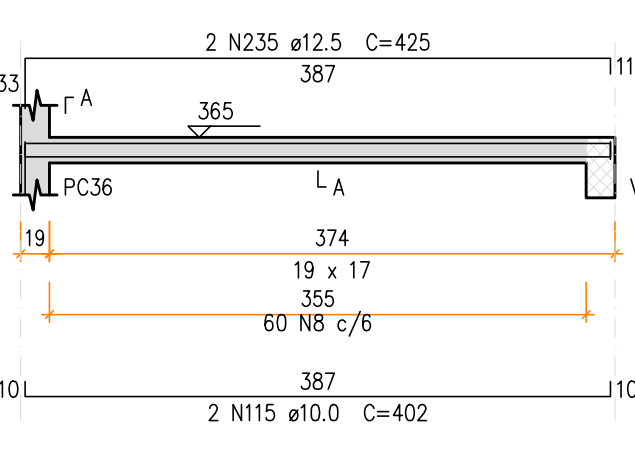
VC2046 (19 x 40)
ESC 1:50



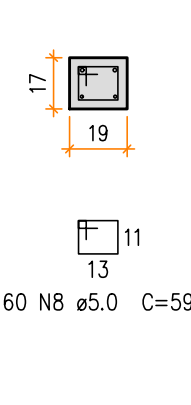
SEÇÃO A-A
ESC 1:25



VC2047 (19 x 17)
ESC 1:50



SEÇÃO A-A
ESC 1:25



Relação do aço					
AÇO	N	DIAM (mm)	QUANT	C.UNIT (cm)	C.TOTAL (cm)
CA60	2	5.0	508	105	53340
	8	5.0	180	59	10620
	9	5.0	120	51	6120
CA50	26	6.3	6	779	4674
	13	6.3	329	106	34874
	15	6.3	6	843	5058
	28	6.3	6	1184	7104
	29	6.3	6	1122	6732
	30	6.3	6	705	4230
	31	6.3	6	450	2700
	192	10.0	2	500	1000
	126	10.0	2	424	848
	193	10.0	2	426	852
	145	10.0	6	752	4512
	194	10.0	4	776	3104
	61	10.0	2	215	430
	195	10.0	2	415	830
	196	10.0	2	766	1532
	115	10.0	2	402	804
	230	12.5	2	1083	2166
	231	12.5	2	215	430
	232	12.5	2	840	1680
	233	12.5	2	412	824
	234	12.5	2	456	912
	235	12.5	2	425	850
	272	16.0	2	792	1584
	273	16.0	2	865	1730
	274	16.0	2	1070	2140
	275	16.0	2	158	316
	276	16.0	2	1135	2270
	277	16.0	2	1149	2298
	278	16.0	2	718	1436
	279	16.0	2	763	1526
	280	16.0	2	794	1588
	281	16.0	2	460	920
	282	16.0	2	750	1500
	283	16.0	2	818	1636
	317	20.0	2	851	1702
	318	20.0	2	921	1842

Resumo do aço		
AÇO	DIAM (mm)	PESO (kg)
CA50	6.3	653.8
	10.0	143.1
	12.5	68.7
	16.0	189.5
	20.0	35.5
CA60	5.0	700.8
PESO TOTAL (kg)		1608
CA50	700.7	
CA60	108	

Volume de concreto (C-35) = 6.61 m³

Área de forma = 64.11 m²

PROJETO APROVADO
LIBERADO PARA
EXECUÇÃO
01 / AGOSTO / 2025

PRINCIPAIS NORMAS TÉCNICAS UTILIZADAS

NORMA TÉCNICA	APROVAÇÃO
ABNT NBR 6118:2023	Projeto de estruturas de concreto — Procedimento
ABNT NBR 6120:2019	Ações para o cálculo de estruturas de edificações
ABNT NBR 6122:2019	Projeto e execução de fundações
ABNT NBR 6123:2023	Forças devidas ao vento em edificações
ABNT NBR 8681:2004	Ações e segurança nas estruturas — Procedimento
ABNT NBR 8800:2008	Projeto de estruturas de aço e de estruturas mistas de aço e concreto de edifícios
ABNT NBR 14.762:2010	Dimensionamento de estruturas de aço constituídas por perfis formados a frio

CONTROLE DAS REVISÕES

Nº	DISCRIMINAÇÃO DAS REVISÕES	DATA	APROVAÇÃO
R00	EMIÇÃO INICIAL	03/06/2025	RENAN DIAS

ESTRUTURA DE CONCRETO ARMADO

CONSTRUÇÃO DE ESCOLA INFANTIL MUNICIPAL NO SMART CITY/JARDIM BARNABÉ

ENDEREÇO: RUA MILTON ROSA DA SILVA, S/Nº – LOTEAMENTO PARQUE BARNABÉ, INDIAIATUBA – SP

PROPRIETÁRIO: PREFEITURA MUNICIPAL DE INDIAIATUBA

ASSUNTO: DETALHAMENTO DE VIGAS | PAVIMENTO COBERTURA 1 – FOLHA 04

DIAS & CARDOZO

RUA RITA GERALDI DE GENOVA, 777 - JARDIM ROSA AMARELA

CEP: 15.600-426 | FERNANDÓPOLIS - SP

PHONE: (17) 3462-6301 | CEL.: (17) 99625-6301

E-MAIL: dias&cardozo@diascardozo.com.br

DATA: 29/05/2025

DESENHO: RENAN

Nº DA ART: 28027230231647119

DISCIPLINA: ENGENHEIRO CIVIL

EST

ETAPA: EXECUTIVO

ESCALA: INDICADA

VISTO: RENAN DIAS

Nº DA PRANCH: 25

28

JOEL RODRIGO CARDOZO

ENGENHEIRO CIVIL

CREA: 1096404144-5

NOME DO ARQUIVO: 2023-250.8.2-EST-PE-EC-025-R00

TODOS OS DIREITOS RESERVADOS ©