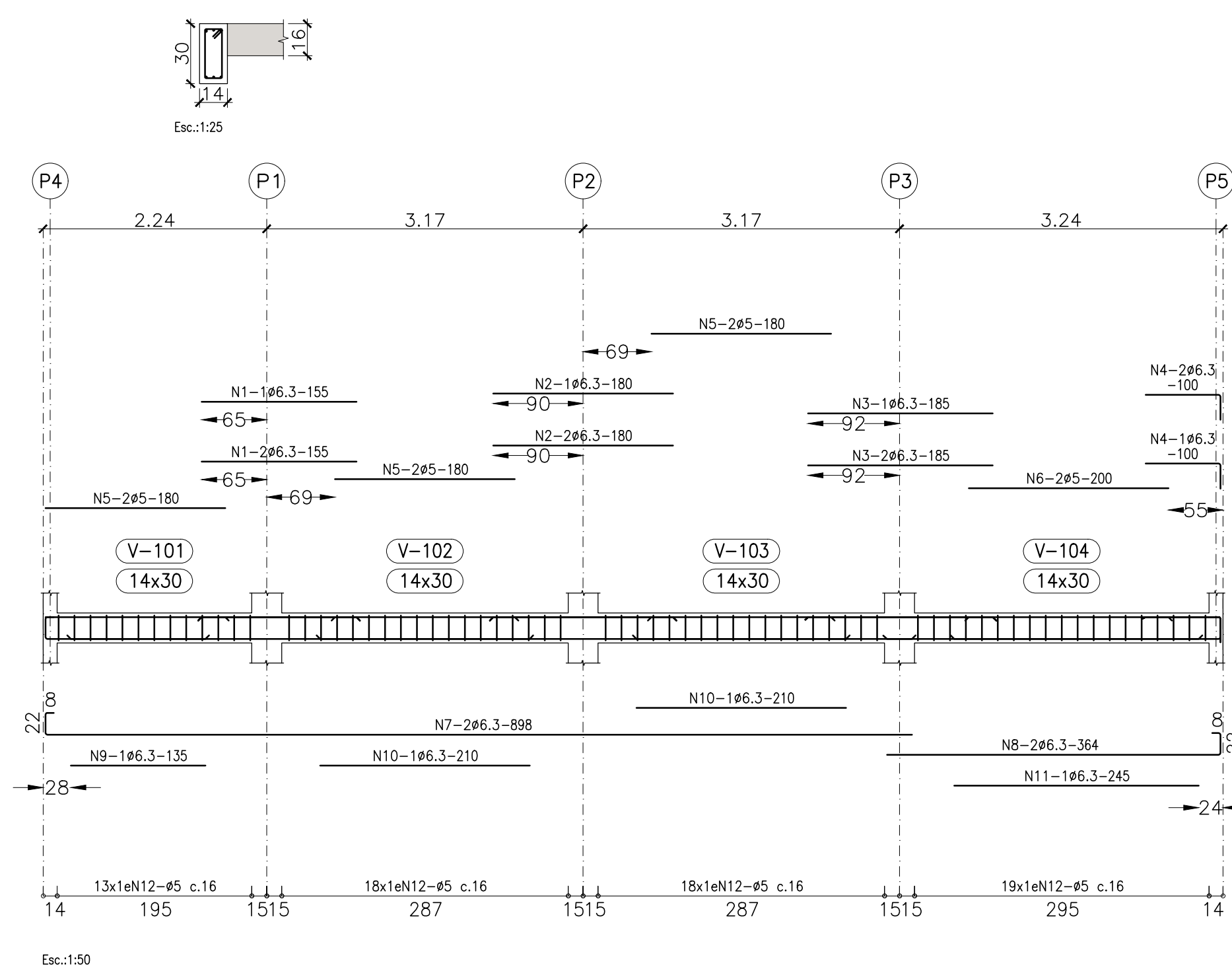
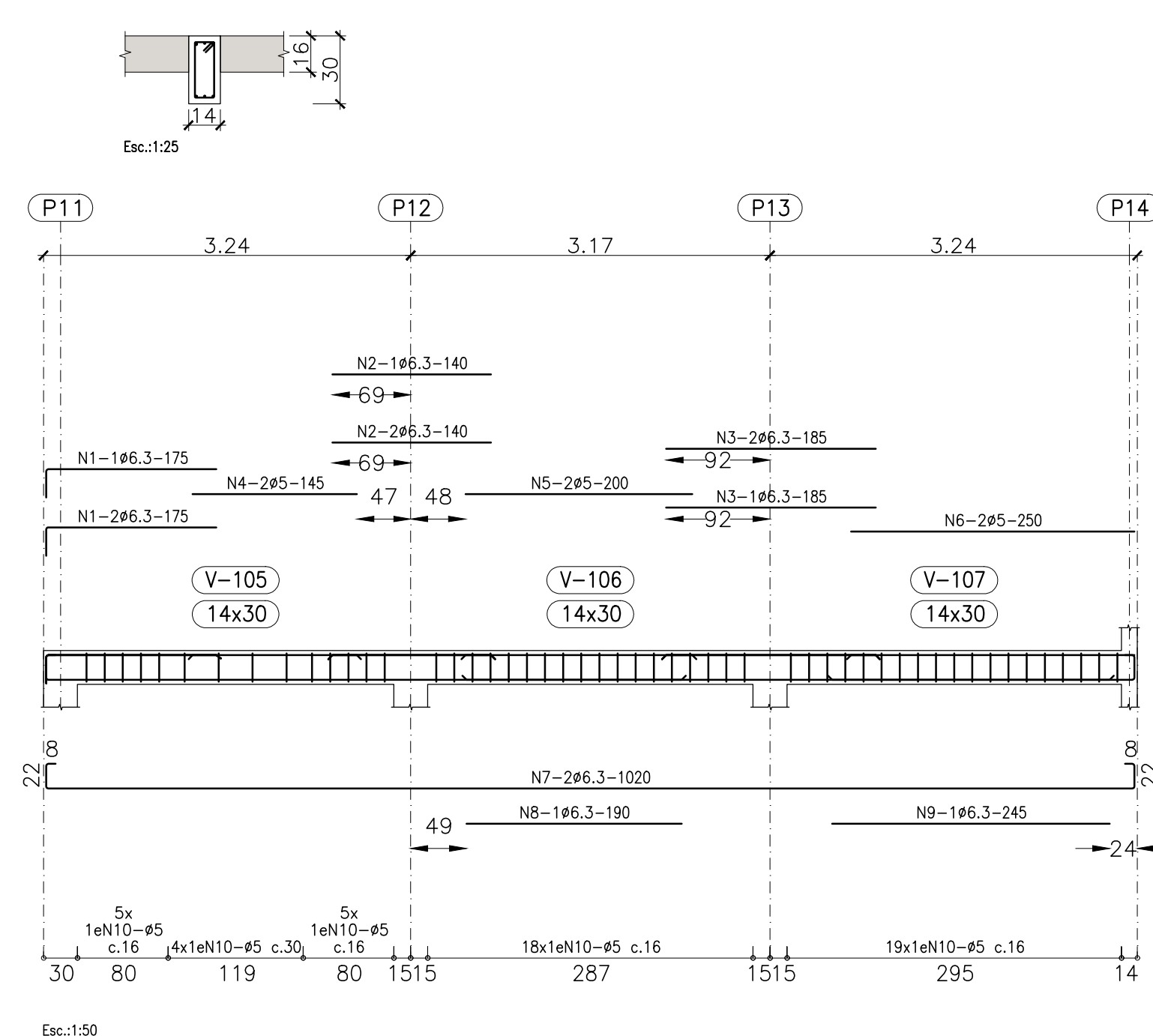


ELEVÇÃO 103,00

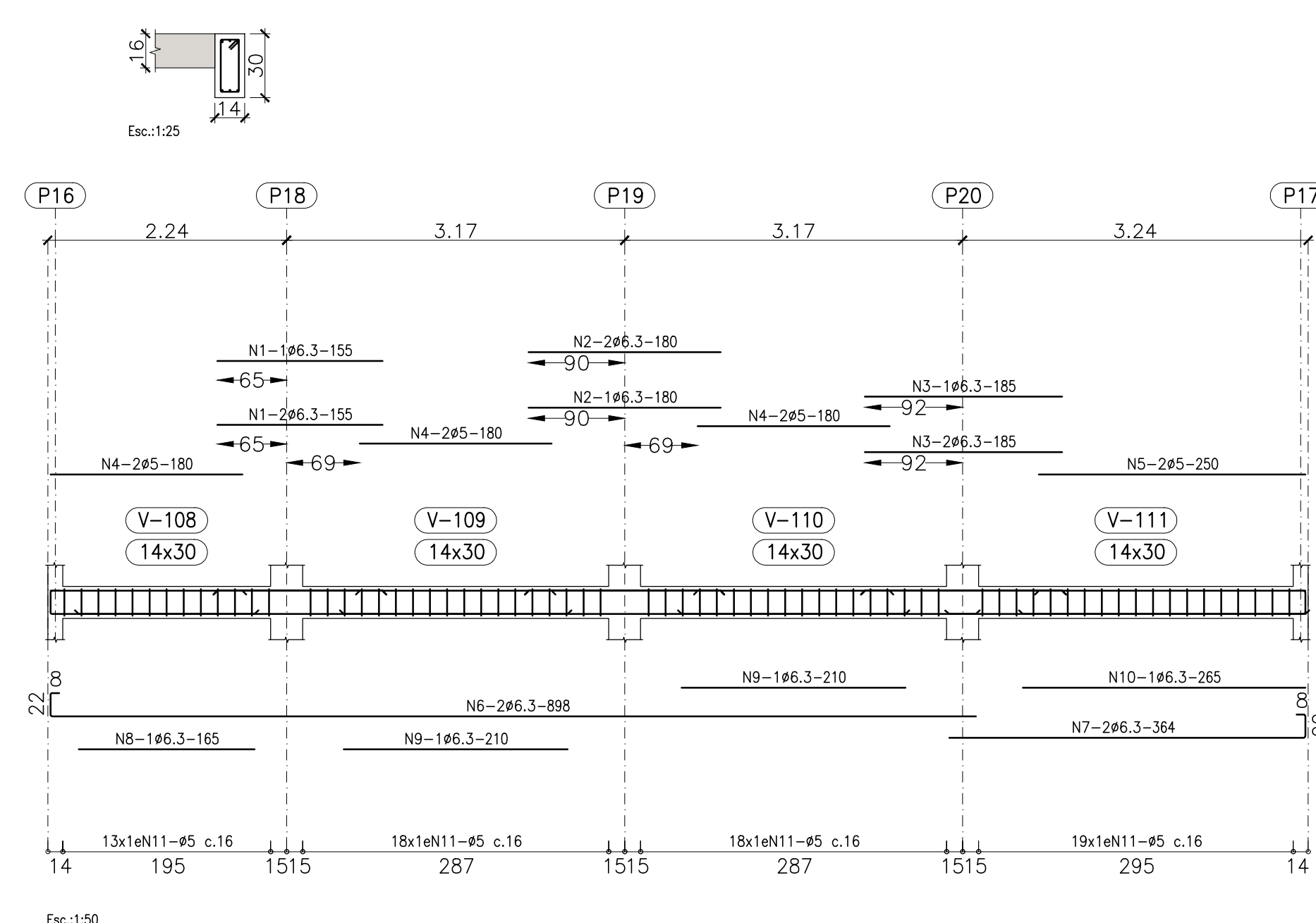
V 1



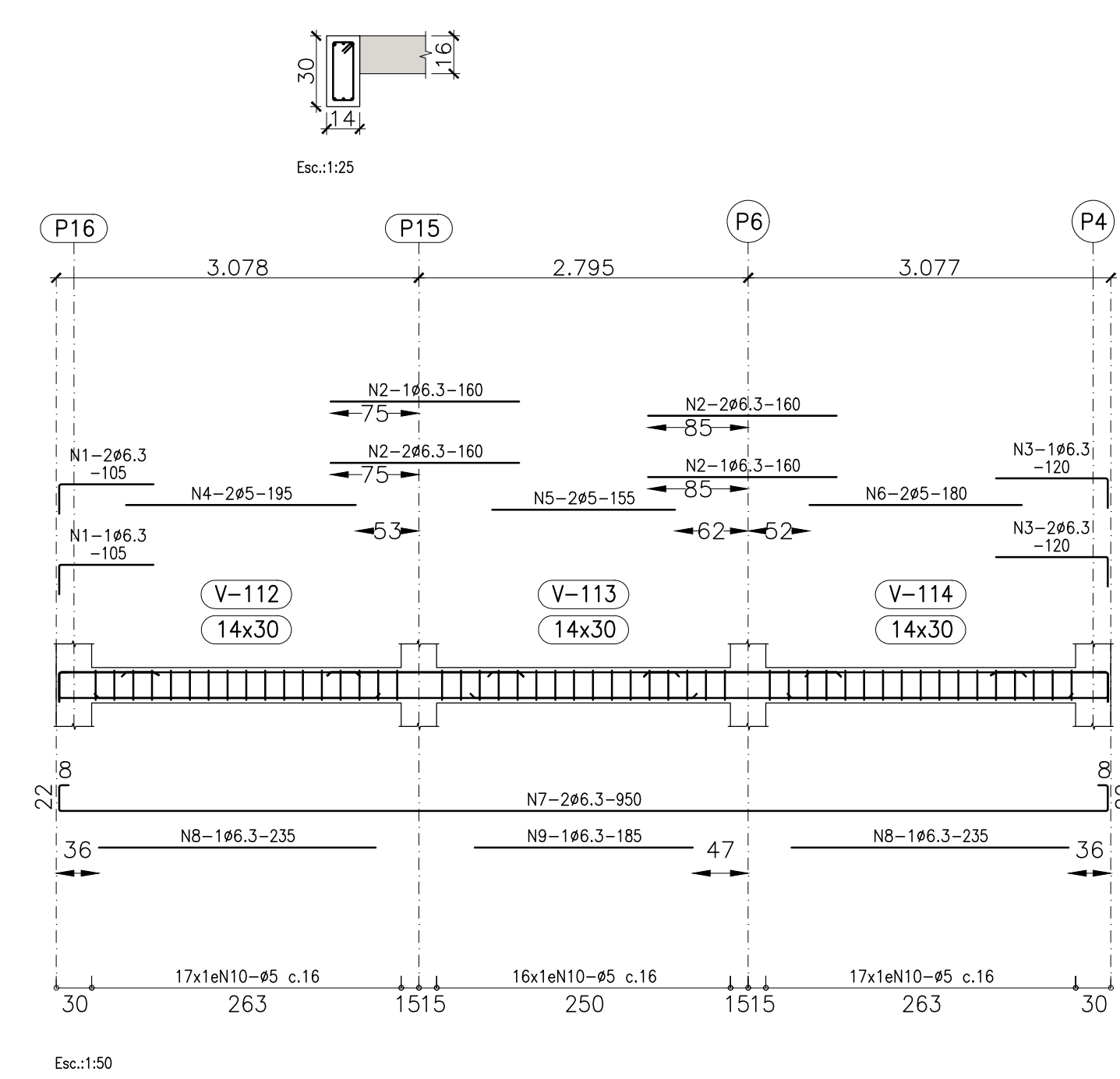
V 2



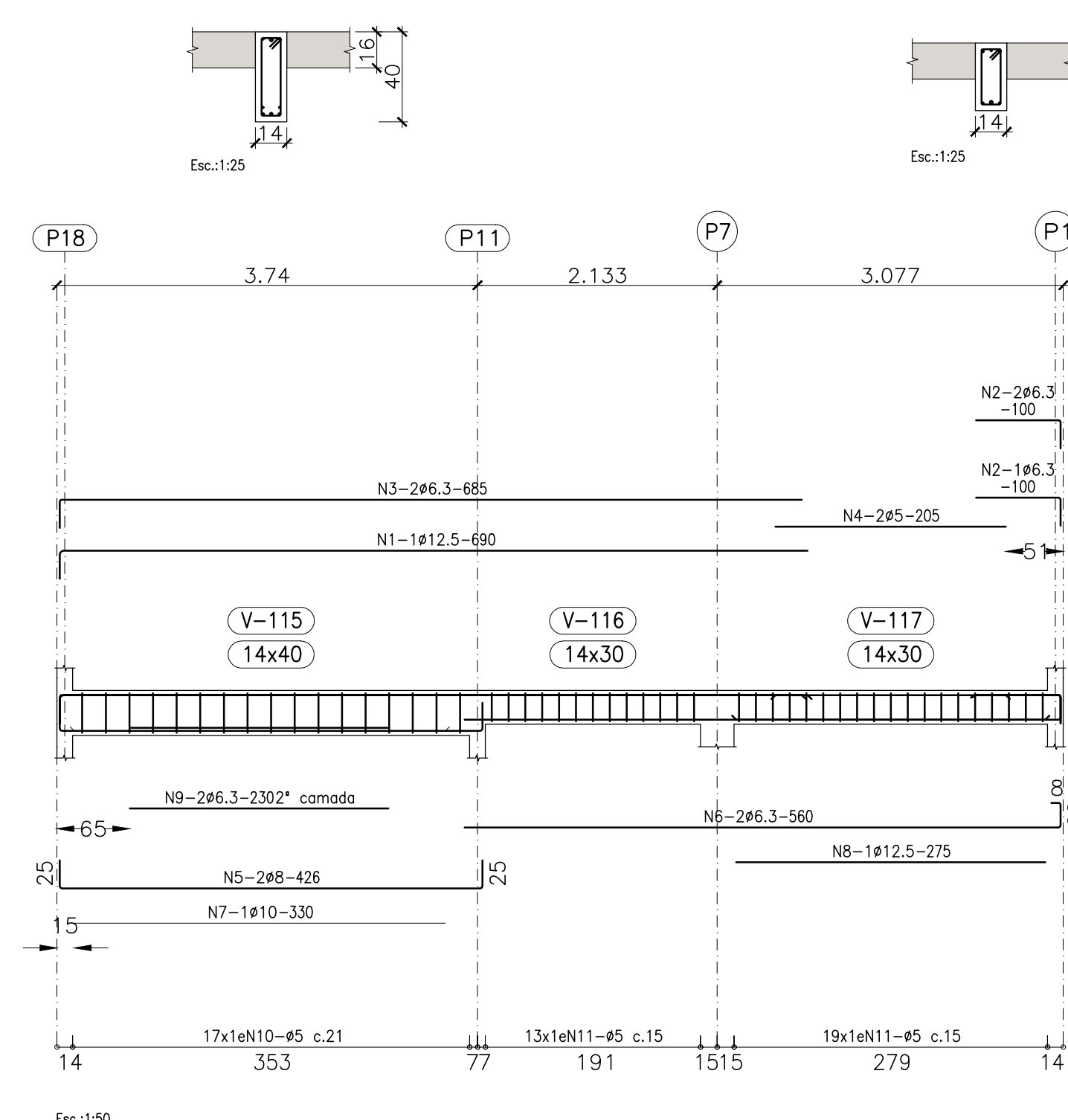
V 3



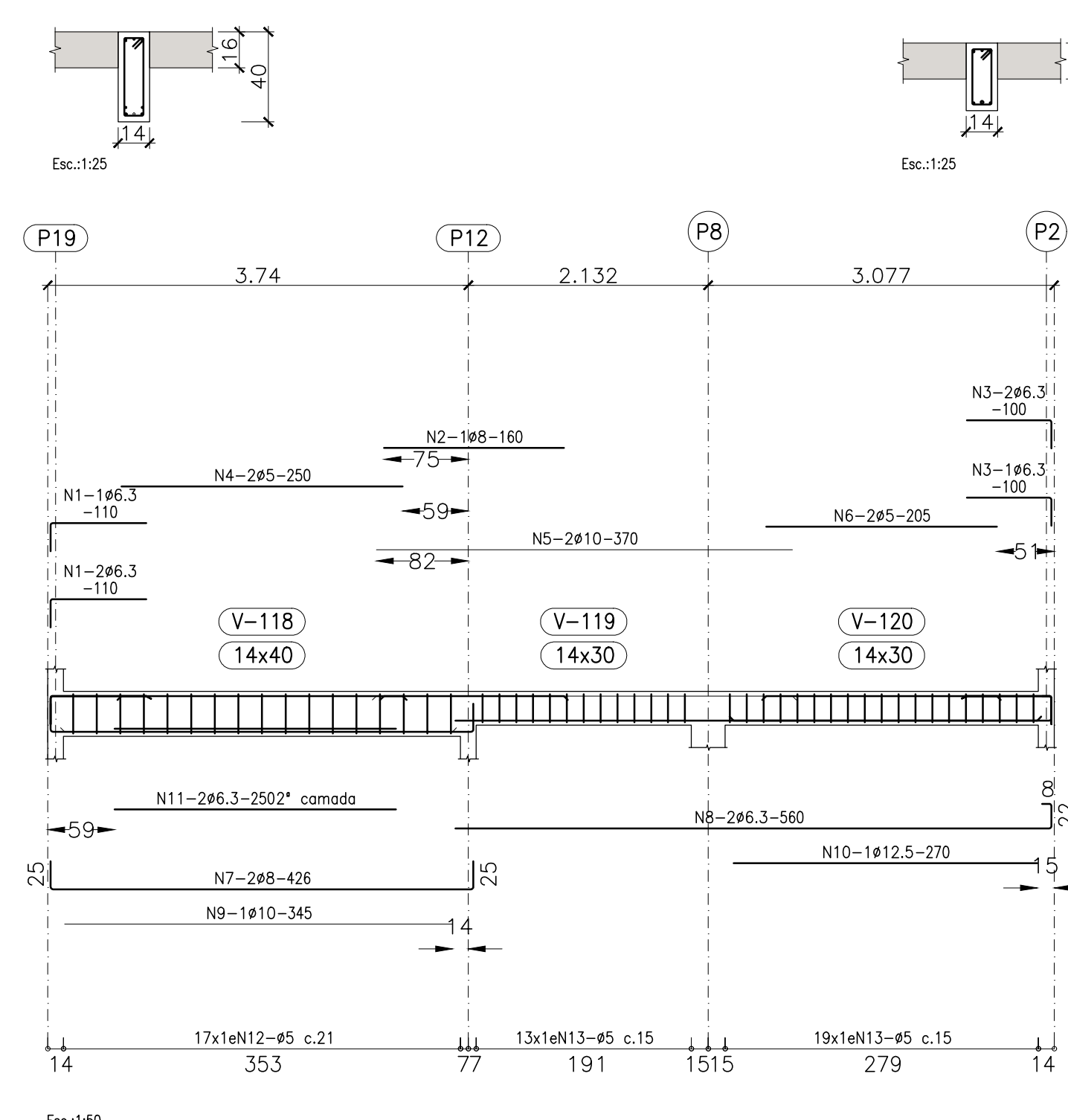
V 4



V 5



V 6

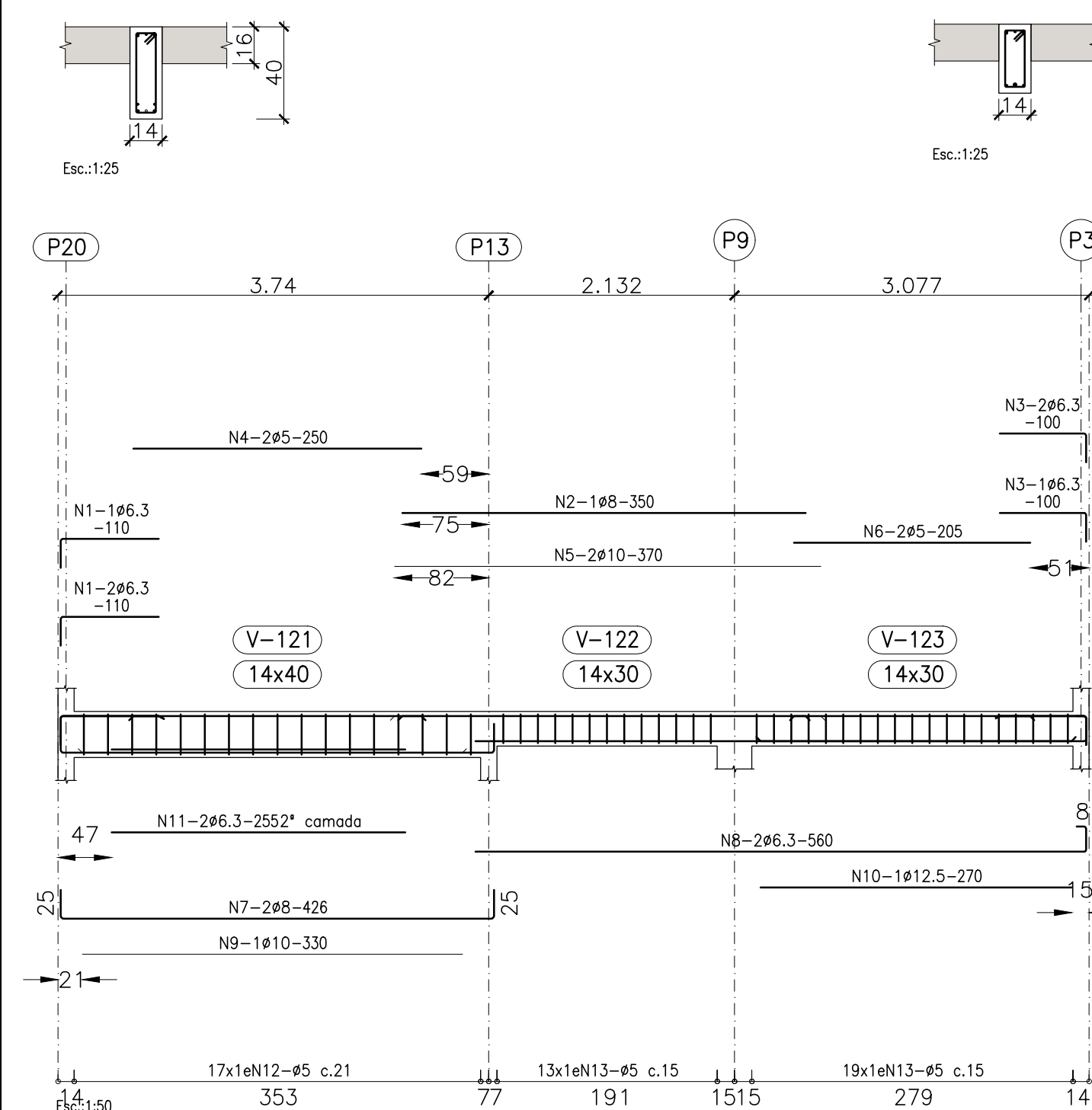


Elemento	Pos.	Diam.	Q.	Esquema (cm)	Comp. (cm)	Total (cm)	CA-50 (kg)	CA-60 (kg)
V 1	146.3	3	155	465	1.1			
	246.3	3	180	540	1.3			
	346.3	3	185	555	1.4			
	446.3	3	100	300	0.7			
	546.3	6	180	1080	1.7			
	646.3	2	200	400	0.6			
	746.3	2	898	1796	4.4			
	846.3	2	364	728	1.8			
	946.3	2	135	135	0.3			
	1046.3	2	210	420	1.0			
	1146.3	1	245	245	0.6			
	1246.3	68	76	5168	8.1			
						Total+10%	11.6	8.5
V 2	146.3	3	175	525	1.3			
	246.3	3	140	420	1.0			
	346.3	3	185	555	1.4			
	446.3	2	145	290	0.5			
	546.3	2	200	400	0.6			
	646.3	2	250	500	0.8			
	746.3	2	1020	2040	5.0			
	846.3	2	190	190	0.5			
	946.3	2	245	245	0.6			
	1046.3	51	76	3876	6.1			
						Total+10%	10.8	8.8
V 3	146.3	3	155	465	1.1			
	246.3	3	180	540	1.3			
	346.3	3	185	555	1.4			
	446.3	2	100	300	0.7			
	546.3	6	180	1080	1.7			
	646.3	2	200	400	0.6			
	746.3	2	898	1796	4.4			
	846.3	2	364	728	1.8			
	946.3	2	135	135	0.3			
	1046.3	2	210	420	1.0			
	1146.3	1	245	245	0.6			
	1246.3	68	76	5168	8.1			
						Total+10%	13.2	11.7

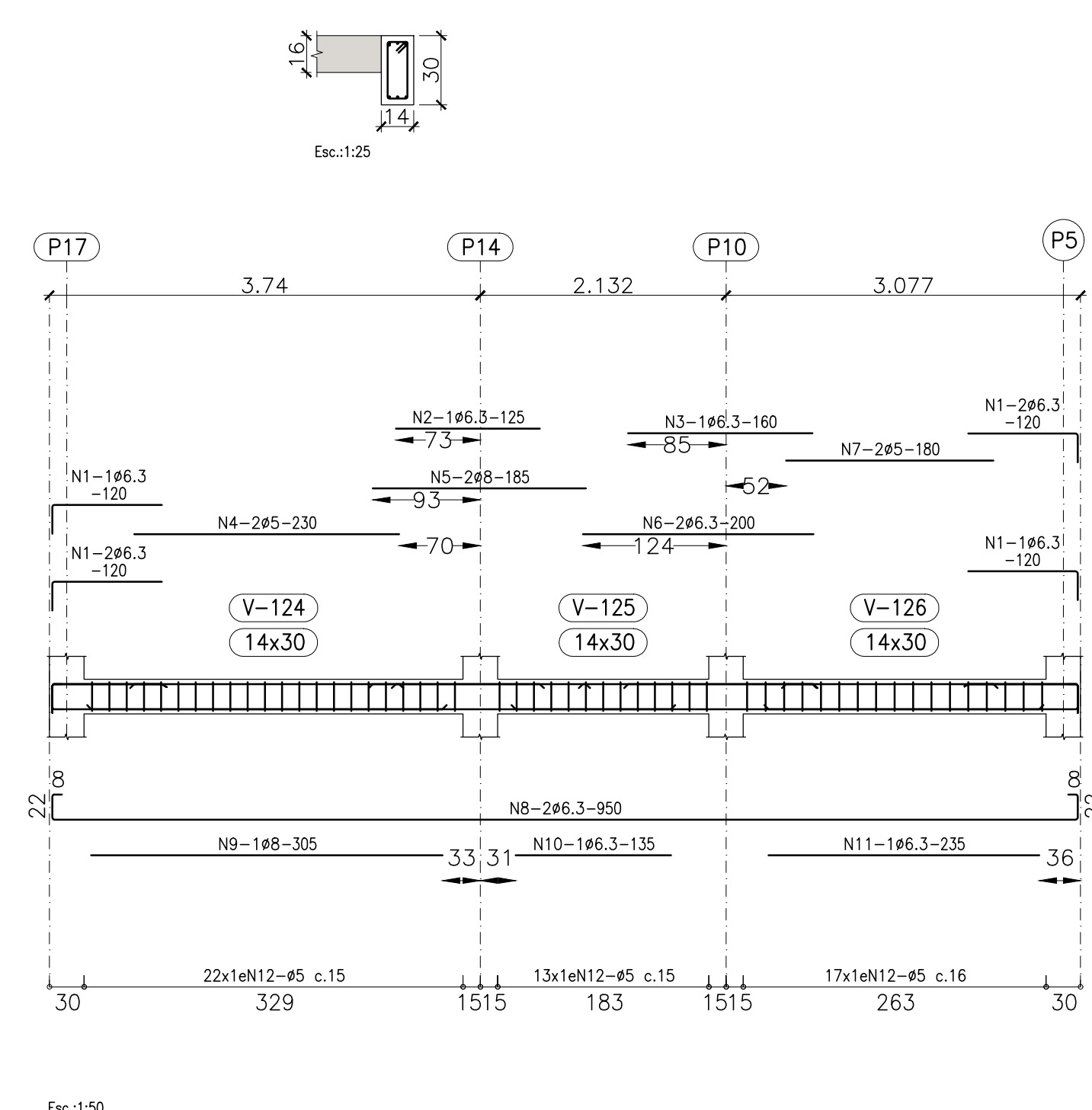
Elemento	Pos.	Diam.	Q.	Esquema (cm)	Comp. (cm)	Total (cm)	CA-50 (kg)	CA-60 (kg)
V 4	146.3	3	105	315	0.8			
	246.3	6	160	960	2.4			
	346.3	3	120	360	0.9			
	446.3	2	195	390	0.6			
	546.3	2	155	310	0.5			
	646.3	2	180	360	0.6			
	746.3	2	950	1900	4.7			
	846.3	2	235	470	1.2			
	946.3	1	185	185	0.5			
	1046.3	50	76	3800	6.0			
						Total+10%	11.6	8.5
V 5	146.3	3	105	315	0.8			
	246.3	3	120	360	0.9			
	346.3	2	100	300	0.7			
	446.3	2	205	410	0.6			
	546.3	2	426	852	3.4			
	646.3	2	560	1120	2.7			
	746.3	2	330	330	2.0			
	846.3	1	275	275	2.6			
	946.3	2	230	460	1.1			
	1046.3	17	96	1632	2.6			
	1146.3	32	76	2432	3.8			
						Total+10%	24.8	7.7
V 6	146.3	3	110	330	0.8			
	246.3	3	160	480	0.6			
	346.3	3	100	300	0.7			
	446.3	2	250	500	0.8			
	546.3	2	370	740	4.6			
	646.3	2	205	410	0.6			
	746.3	2	426	852	3.4			
	846.3	2	560	1120	2.7			
	946.3	2	345	345	2.1			
	1046.3	1	270	270	2.6			
	1146.3	2	250	500	1.2			
	1246.3	17	96	1632	2.6			
	1346.3	32	76	2432	3.8			
						Total+10%	20.6	8.6
							0.0	56.7
							64.1	0.0
							8.2	0.0
							9.6	0.0
							13.0	0.0
							94.9	56.7

ELEVÇÃO 103,00

V 7



V 8

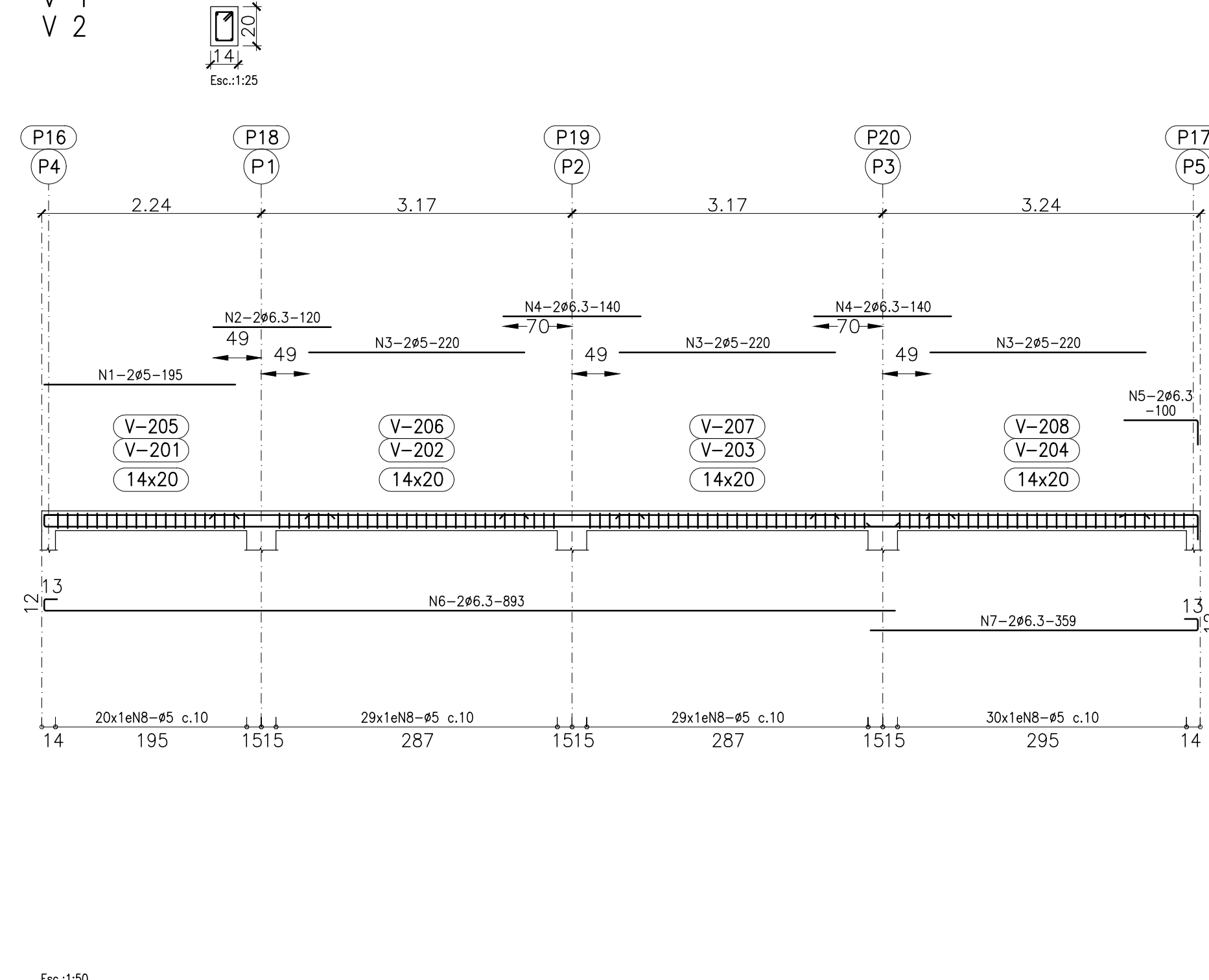


Resumo Aço	Comp. total	Peso+10%	Total
Desenho de vigas	(m)	(kg)	
CA-50	297.2	80	
ø6.3	37.4	16	
ø8	24.9	17	
ø10	15.1	16	129
ø12.5	7.3	7.3	
CA-60	425.2	7.3	
Total			202

Elemento	Pos.	Diam.	Q.	Esquema (cm)	Comp. (cm)	Total (cm)	CA-50 (kg)	CA-60 (kg)
V 7	146.3	3	110	330	0.8			
	246.3	3	350	350	1.4			
	346.3	3	100	300	0.7			
	446.3	2	250	500	0.8			
	546.3	2	370	740	4.6			
	646.3	2	205	410	0.6			
	746.3	2	426	852	3.4			
	846.3	2	560	1120	2.7			
	946.3	2	330	330	2.0			
	1046.3	1	270	270	2.6			
	1146.3	1	255	510	1.2			
	1246.3	17	96	1632	2.6			
	1346.3	32	76	2432	3.8			
						Total+10%	21.3	8.6
V 8	146.3	6	120	720	1.8			
	246.3	3	125	125	0.3			
	346.3	1	160	160	0.4			
	446.3	2	230	460	0.7			
	546.3	2	185	370	1.5			
	646.3	2	200	400	1.0			
	746.3	2	180	360	0.6			
	846.3	2	950	1900	4.7			
	946.3	4	305	305	1.2			
	1046.3	1	135	135	0.3			
	1146.3	1	235	235	0.6			
	1246.3	52	76	3952	6.2			
						Total+10%	13.0	8.3
							0.0	16.9
							15.9	0.0
							7.3	0.0
							2.8	0.0
							34.3	16.9

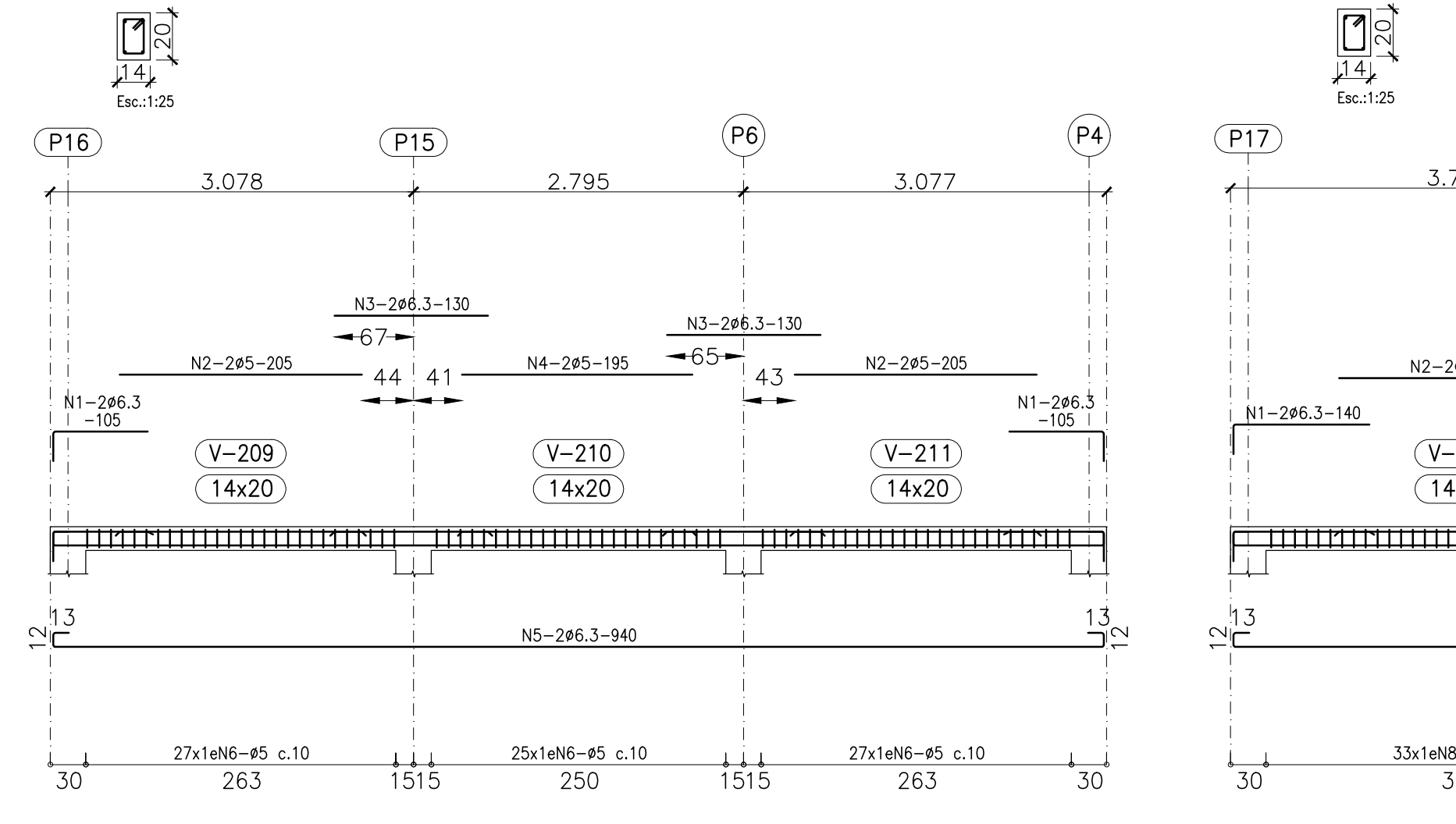
ELEVÇÃO 103,80

V 1



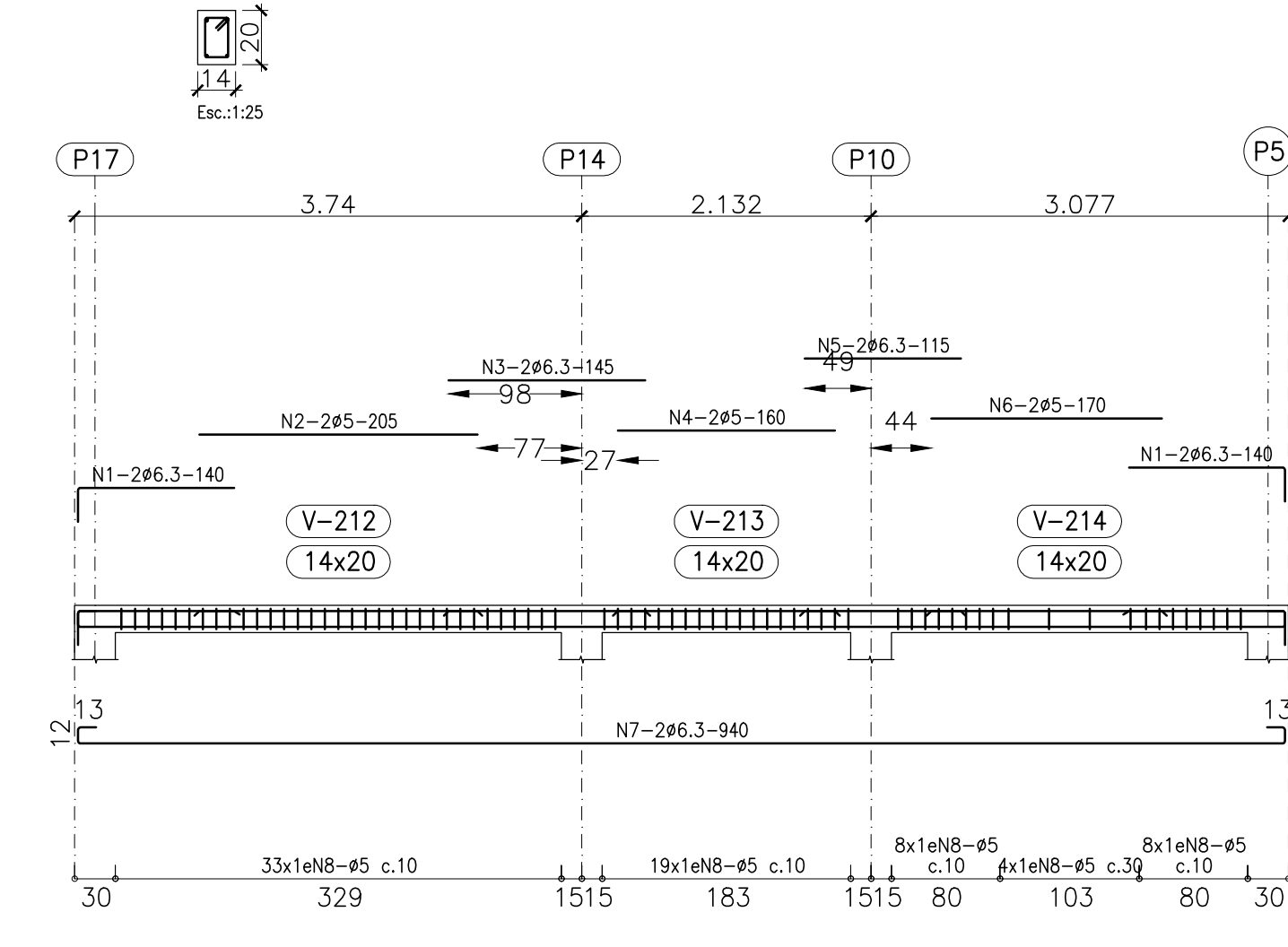
Exc:150

V 3



Exc:150

V 4



Exc:150

Elemento	Pos.	Diam.	Q.	Esquema (cm)	Comp. (cm)	Total (cm)	CA-50 (kg)	CA-60 (kg)
V 1+V 2	146.3	2	195	390	0.6			
	246.3	2	120	240	0.6			
	346.3	6	220	1320	2.1			
	446.3	4	140	560	1.4			
	546.3	2	100	200	0.5			
	646.3	2	893	1786	4.4			
	746.3	2	359	718	1.8			
	846.3	108	56	6048	9.5			
						Total+10%	9.6	13.4
V 3	146.3	4	105	420	1.0			
	246.3	4	205	820	1.3			
	346.3	3	130	520	1.3			
	446.3	2	195	390	0.6			
	546.3	2	940	1880	4.6			
	646.3	79	56	4424	6.9			
						Total+10%	7.6	9.7
V 4	146.3	4	140	560	1.4			
	246.3	2	205	410	0.6			
	346.3	2	145	290	0.7			
	446.3	2	160	320	0.5			
	546.3	2	115	230	0.6			
	646.3	2	170	340	0.5			
	746.3	2	940	1880	4.6			
	846.3	72	56	4032	6.3			
						Total+10%	8.0	8.7
							0.0	45.2
							34.8	0.0
							34.8	45.2

Resumo Aço	Comp. total	Peso+10%	Total
Desenho de vigas	(m)	(kg)	
CA-50	127.9	34	34
CA-60	262.5	45	45
Total			79

NOTAS:

- 1 - DIMENSÕES EM CENTÍMETRO, ELEVÇÕES E COORDENADAS EM METRO, EXCETO ONDE INDICADO.
- 2 - MATERIAIS:
 - CONCRETO ESTRUTURAL fck ≥ 30 MPa, FATOR AGUA/CEMENTO ≤ 0,6.
 - CONCRETO MARIPO fck ≥ 10 MPa.
 - CONCRETO PARA ESTACA fck ≥ 30 MPa.
 - AÇO CA-50.
- 3 - AS ELEVÇÕES DEVEM SER CONFRONTADAS COM AS INDICADAS NO DESEN