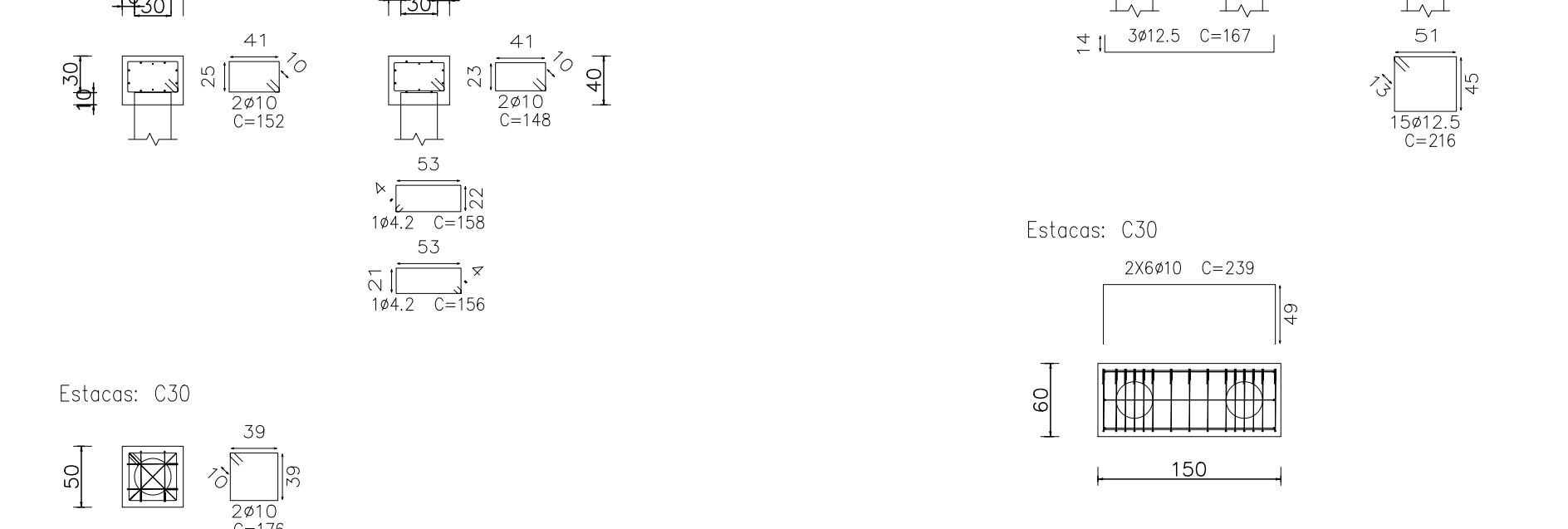


P1, P2, P3, P6, P7, P8, P9, P10, P11, P14, P15, P16, P17, P18, P19, P20, P22, P23, P24, P25, P26, P27, P28, P31, P32, P33, P34, P35, P36, P40, P41, P42, P43, P44, P45, P46, P48, P49, P51, P55, P56, P57, P58, P59, P60, P61, P63, P65, P66, P67, P68, P73, P74, P75, P76, P78, P80 e P81

P4, P5, P12, P13, P36, P37, P39, P47, P50, P52, P53, P54, P62, P64, P69, P70, P71, P72, P77 e P79



Elemento	Pos	Diam. Ø	Do	Re	Job	Comp.	tot	CA-50	CA-60
		(cm)	(cm)	(cm)	(cm)	(cm)	(kg)	(kg)	(kg)
P1-P2-P3-P6-P7	1	Ø10	2	192	192	52	354	1.9	
P8-P9-P10-P11-P14	2	Ø10	2	148	148	148	296	1.8	
P15-P16-P17-P18	3	Ø10	2	176	176	352	2.2		
P19-P20-P22-P23	4	Ø4.2	1	158	158	158	158	0.2	
P24-P25-P26-P27	5	Ø4.2	1	156	156	156	156	0.2	
P28-P30-P31-P32	6	Ø4.2	1	156	156	156	156	0.2	
P33-P34-P35-P38	7	Ø4.2	1	156	156	156	156	0.2	
P40-P41-P42-P43	8	Ø4.2	1	156	156	156	156	0.2	
P44-P45-P46-P48	9	Ø4.2	1	156	156	156	156	0.2	
P49-P51-P55-P56	10	Ø4.2	1	156	156	156	156	0.2	
P57-P58-P59-P60	11	Ø4.2	1	156	156	156	156	0.2	
P61-P63-P65-P66	12	Ø4.2	1	156	156	156	156	0.2	
P67-P68-P73-P74	13	Ø4.2	1	156	156	156	156	0.2	
P75-P76-P78-P80	14	Ø4.2	1	156	156	156	156	0.2	
P81	15	Ø4.2	1	156	156	156	156	0.2	
Total+100%							6.5	0.4	
Total+100%							383.5	23.6	
P19-P20-P22-P23	6	Ø12.5	3	14	130	14	167	30.6	
P37-P39-P47-P50	7	Ø12.5	3	19	138	19	176	528	5.1
P52-P53-P54-P62	8	Ø10	12	239	239	2968	17.7		
P64-P69-P70-P71	9	Ø12.5	15	210	210	3242	31.2		
P72-P77-P79	10	Ø10	2	192	192	384	2.4		
P21-P29	11	Ø10	2	158	158	316	2.3		
	12	Ø10	2	176	176	352	2.2		
	13	Ø4.2	1	158	158	158	0.2		
	14	Ø4.2	1	156	156	156	0.2		
Total+100%							8.8	0.4	
Total+100%							171.6	0.8	
Ø12.5							791.1	0.0	
Ø10							3242.0	0.0	
Total							1695.1	24.4	

DEIXAR ESPERAS DE ARRANCA PARA PILARES CONFORME ARMAÇÃO DOS PILARES

Nome	Seção	X	Y	Carga Max (t)	Carga Min (t)	Pilar		My Máximo (kgf.m)		Fx Máximo (t)		Fy Máximo (t)	
						Positivo	Negativo	Positivo	Negativo	Positivo	Negativo	Positivo	Negativo
P1	20x30	-6641.40	-2345.02	4.2	3.4	0.0	0.0	0.0	0.0	-0.4	0.0	-0.2	0.0
P2	20x30	-6298.40	-2340.02	7.0	8.3	0.0	0.0	0.0	0.0	0.0	0.0	0.1	0.0
P3	20x30	-6297.40	-2340.02	9.3	8.2	0.0	0.0	0.0	0.0	0.0	-0.2	0.3	0.0
P4	20x30	-5813.40	-2340.02	12.8	11.3	0.0	0.0	0.0	0.0	0.0	-0.6	0.3	0.0
P5	20x30	-5950.40	-2340.02	13.0	12.0	0.0	0.0	0.0	0.0	0.0	0.5	0.3	0.0
P6	20x30	-4751.40	-2340.02	9.0	7.9	0.0	0.0	0.0	0.0	0.1	-0.3	0.1	0.0
P7	20x30	-6641.40	-2345.02	6.6	6.1	0.0	0.0	0.0	0.0	0.0	0.0	0.1	0.0
P8	20x30	-6641.40	-2345.02	6.6	6.1	0.0	0.0	0.0	0.0	0.0	0.0	-0.2	0.4
P9	14x30	-6294.40	-2345.02	9.7	7.7	0.0	0.0	0.0	0.0	0.1	0.0	0.2	0.0
P10	20x30	-4411.40	-2340.02	9.9	8.3	0.0	0.0	0.0	0.0	0.1	0.0	0.4	0.0
P11	14x30	-5843.40	-2813.02	12.3	9.9	0.0	0.0	0.0	0.0	0.2	0.0	0.0	-0.2
P12	14x30	-5813.40	-2813.02	14.4	11.5	0.0	0.0	0.0	0.0	0.1	-0.3	0.3	-0.2
P13	14x30	-5085.40	-2813.02	13.8	11.2	0.0	0.0	0.0	0.0	0.2	0.0	0.1	-0.2
P14	14x30	-4759.40	-2805.02	9.4	7.1	0.0	0.0	0.0	0.0	0.1	0.0	0.2	0.0
P15	20x30	-6641.40	-2974.14	7.2	6.5	0.0	0.0	0.0	0.0	0.0	-0.4	0.0	-0.5
P16	20x30	-6291.90	-2979.74	10.0	8.9	0.0	0.0	0.0	0.0	0.2	-0.2	0.0	-0.3
P17	20x30	-6566.40	-2979.93	4.6	4.4	0.0	0.0	0.0	0.0	0.2	-0.3	0.1	0.0
P18	20x30	-5866.40	-2979.93	4.7	4.3	0.0	0.0	0.0	0.0	0.3	0.0	0.2	0.0
P19	20x30	-5386.40	-2979.93	4.8	4.5	0.0	0.0	0.0	0.0	0.0	0.4	0.1	0.0
P20	20x30	-5095.40	-2979.93	5.2	4.9	0.0	0.0	0.0	0.0	0.2	-0.1	0.1	0.0
P21	20x30	-4767.40	-2979.93	5.3	4.9	0.0	0.0	0.0	0.0	0.1	-0.2	0.1	0.0
P22	20x30	-4416.40	-2979.93	7.1	6.4	0.0	0.0	0.0	0.0	0.2	0.0	0.1	0.0
P23	20x30	-6836.40	-3269.97	7.1	6.5	0.0	0.0	0.0	0.0	0.0	-0.4	0.4	0.0
P24	20x30	-6308.90	-3269.97	6.3	5.8	0.0	0.0	0.0	0.0	0.1	-0.2	0.1	0.0
P25	20x30	-6036.39	-3269.97	6.2	5.8	0.0	0.0	0.0	0.0	0.1	-0.2	0.2	0.0
P26	20x30	-5661.40	-3274.97	8.8	8.0	0.0	0.0	0.0	0.0	0.3	0.0	0.1	-0.3
P27	20x30	-5274.97	-3274.97	9.3	8.5	0.0	0.0	0.0	0.0	0.0	-0.3	0.4	0.0
P28	20x30	-5144.41	-3269.97	5.8	5.2	0.0	0.0	0.0	0.0	0.3	0.0	0.2	0.0
P29	20x30	-4775.40	-3269.97	6.2	5.7	0.0	0.0	0.0	0.0	0.0	0.4	0.1	0.0
P30	20x30	-4416.40	-3269.97	6.4	6.0	0.0	0.0	0.0	0.0	0.4	0.0	0.5	0.0
P31	20x30	-6633.90	-3660.38	11.2	10.6	0.0	0.0	0.0	0.0	0.0	-0.5	0.0	-0.5
P32	20x30	-6341.40	-3660.38	5.7	4.9	0.0	0.0	0.0	0.0	0.5	0.0	0.1	0.0
P33	20x30	-6036.39	-3660.38	6.9	6.1	0.0	0.0	0.0	0.0	0.3	0.0	0.0	-0.3
P34	20x30	-5661.40	-3660.38	5.9	5.2	0.0	0.0	0.0	0.0	0.1	0.0	0.1	-0.2
P35	20x30	-5391.40	-3725.02	10.9	9.8	0.0	0.0	0.0	0.0	0.1	-0.1	0.2	0.0
P36	19x30	-5136.41	-3717.52	12.8	10.4	0.0	0.0	0.0	0.0	0.1	-0.1	0.0	-0.1
P37	19x30	-4854.40	-3717.52	12.8	10.0	0.0	0.0	0.0	0.0	0.2	-0.1	0.0	-0.1
P38	20x30	-4411.40	-3725.02	6.0	4.9	0.0	0.0	0.0	0.0	0.1	-0.2	0.2	0.0
P39	20x30	-6633.90	-3830.37	12.6	12.0	0.0	0.0	0.0	0.0	0.0	-0.6	0.4	0.0
P40	20x30	-6341.40	-3830.37	6.9	6.1	0.0	0.0	0.0	0.0	0.5	0.0	0.1	0.0
P41	20x30	-6062.96	-3830.37	9.7	8.8	0.0	0.0	0.0	0.0	0.1	-0.3	0.2	0.0
P42	20x30	-5861.40	-3835.37	8.6	7.8	0.0	0.0	0.0	0.0	0.4	0.0	0.6	0.0
P43	20x30	-6036.40	-4220.02	6.7	5.1	0.0	0.0	0.0	0.0	0.2	-0.1	0.0	-0.5
P44	20x30	-6496.40	-4220.02	11.3	9.3	0.0	0.0	0.0	0.0	0.2	-0.1	0.3	0.0
P45	20x25	-6000.96	-4220.02	11.6	10.6	0.0	0.0	0.0	0.0	0.2	0.0	0.0	-0.1
P46	20x30	-5661.40	-4215.02	10.9	9.2	0.0	0.0	0.0	0.0	0.4	0.0	0.0	-0.4
P47	20x30	-5391.40	-4215.02	13.8	12.9	0.0	0.0	0.0	0.0	0.0	-0.4	0.0	-0.3
P48	20x40	-4852.83	-4220.02	8.9	8.1	0.0	0.0	0.0	0.0	0.1	-0.4	0.1	0.0
P49	20x30	-4411.40	-4215.02	6.3	5.8	0.0	0.0	0.0	0.0	0.2	0.0	0.0	-0.7
P50	20x30	-6007.40	-4720.02	16.7	14.0	0.0	0.0	0.0	0.0	0.5	0.0	0.0	-0.2
P51	20x30	-6296.40	-4720.02	11.6	9.4	0.0	0.0	0.0	0.0	0.1	-0.4	0.2	0.0
P52	20x30	-6007.40	-4720.02	14.2	11.9	0.0	0.0	0.0	0.0	0.2	-0.1	0.3	0.0
P53	20x30	-5661.40	-4720.02	12.9	11.2	0.0	0.0	0.0	0.0	0.2	0.0	0.1	0.0
P54	20x30	-5391.40	-4725.02	12.7	11.5	0.0	0.0	0.0	0.0	0.0	-0.2	0.2	0.0
P55	20x25	-5064.57	-4720.02	8.4	7.4	0.0	0.0	0.0	0.0	0.2	-0.2	0.2	0.0
P56	20x25	-4746.24	-4720.02	8.5	7.5	0.0	0.0	0.0	0.0	0.1	-0.1	0.2	0.0
P57	20x30	-4411.40	-4725.02	6.0	5.4	0.0	0.0	0.0	0.0	0.3	0.0	0.4	0.0
P58	20x30	-6386.40	-5076.16	9.3	8.1	0.0	0.0	0.0	0.0	0.0	-0.2	0.0	-0.4
P59	20x25	-5064.57	-5076.16	11.6	10.2	0.0	0.0	0.0	0.0	0.1	-0.3	0.0	-0.1
P60	20x30	-4746.24	-5076.16	12.0	10.9	0.0	0.0	0.0	0.0	0.1	-0.1	0.1	-0.1
P61	20x30	-4411.40	-5070.16	6.9	6.4	0.0	0.0	0.0	0.0	0.2	0.0	0.0	-0.5
P62	20x30	-6271.40	-5050.96	13.9	11.5	0.0	0.0	0.0	0.0	0.1	-0.2	0.3	0.0
P63	20x30	-5661.40											