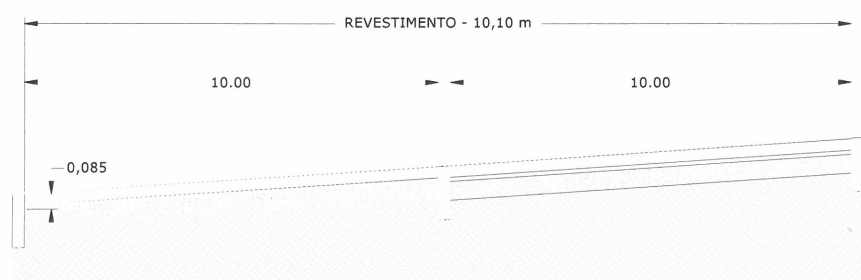


## SEÇÃO TRANSVERSAL TIPO

Sem escala

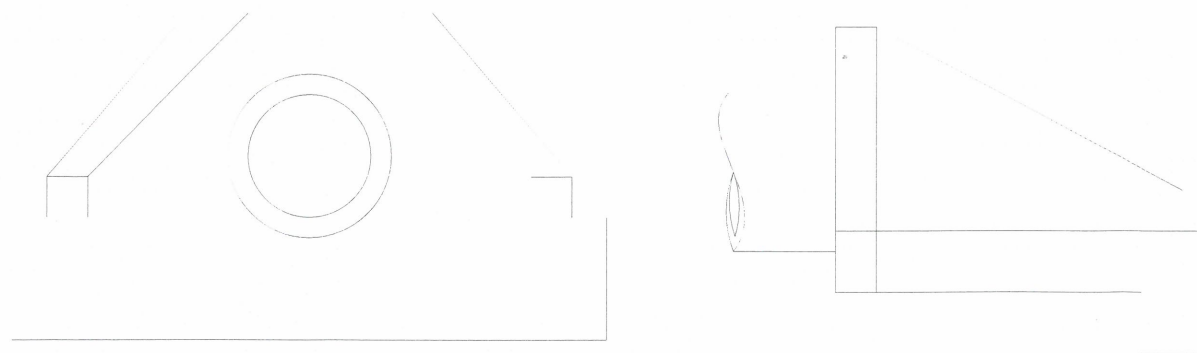


## SEÇÃO LONGITUDINAL TIPO - TRAVAMENTO

Sem escala

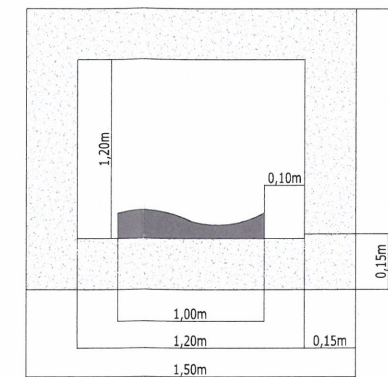
## MURO DE ALA

Sem escala

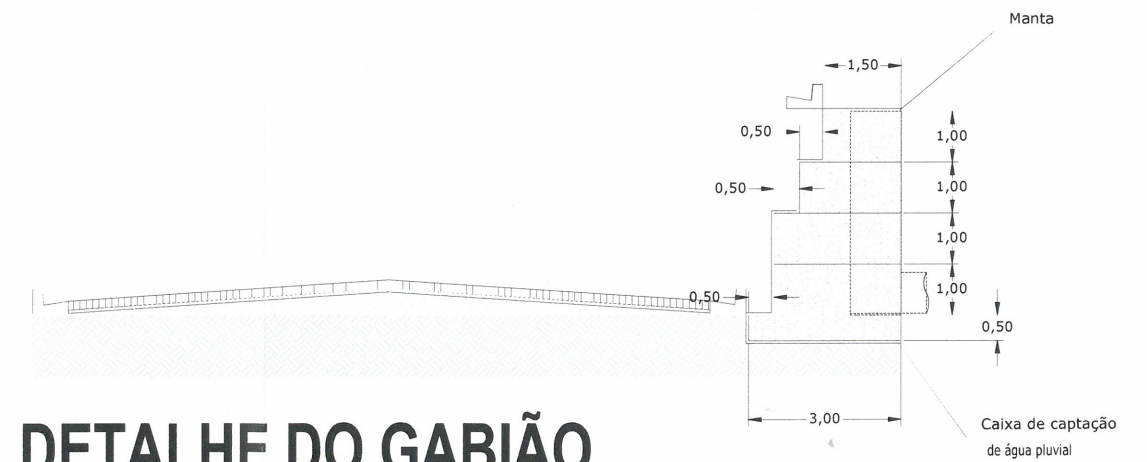
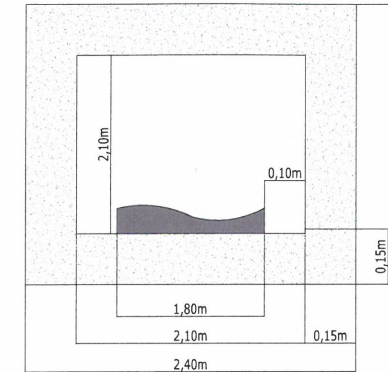


## Detalhe das Caixas

Ø0,60m



Ø0,80m



## DETALHE DO GABIÃO

Escala 1:20

