

# ANEXO III- PAVIMENTO INFERIOR DO PRÉDIO DA CÂMARA

## COZINHA

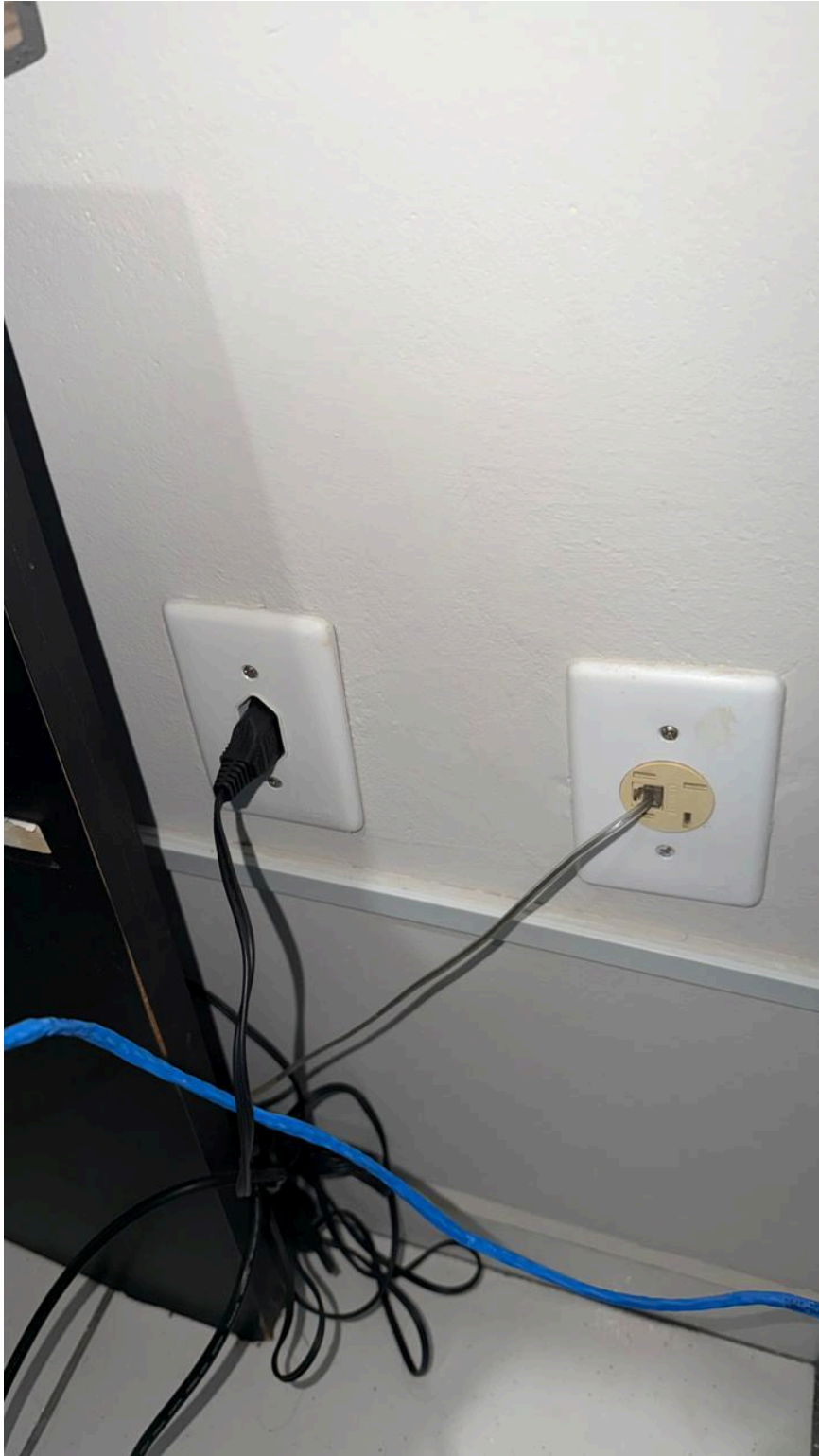




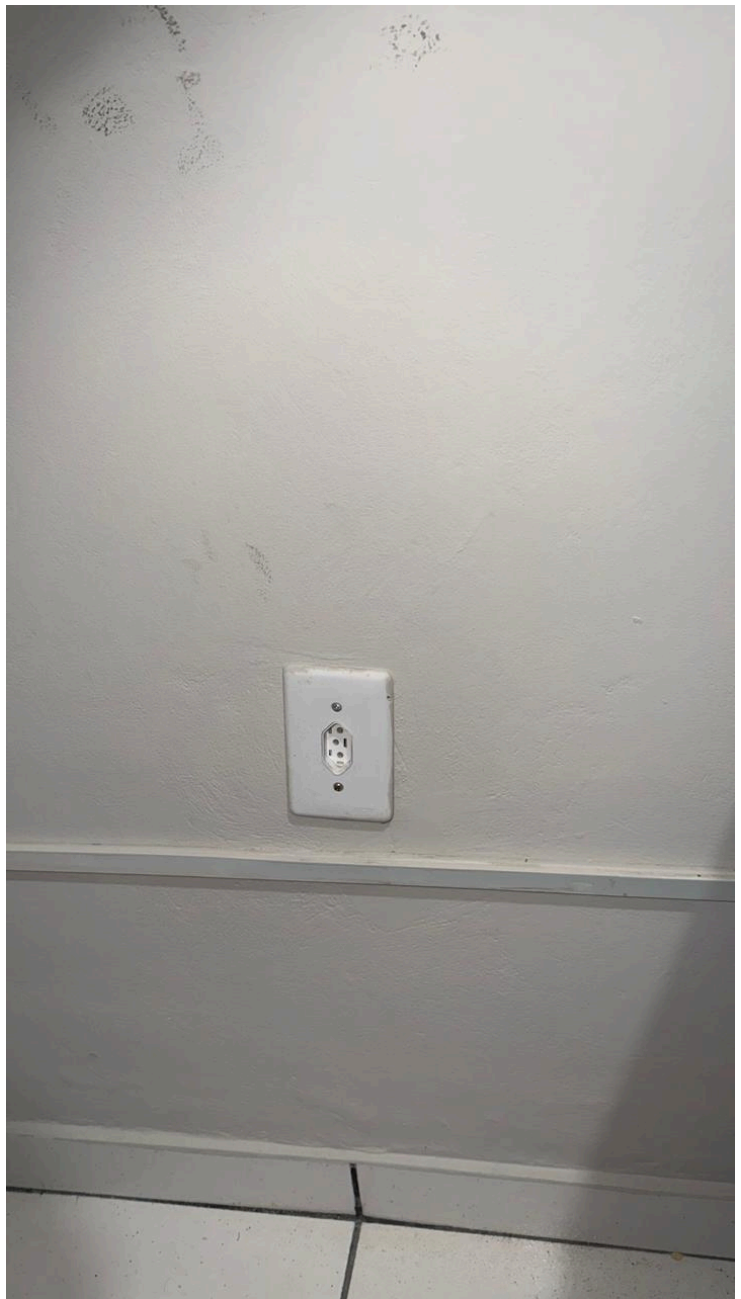




## GABINETE VEREADOR 1











## GABINETE 2









### GABINETE 3



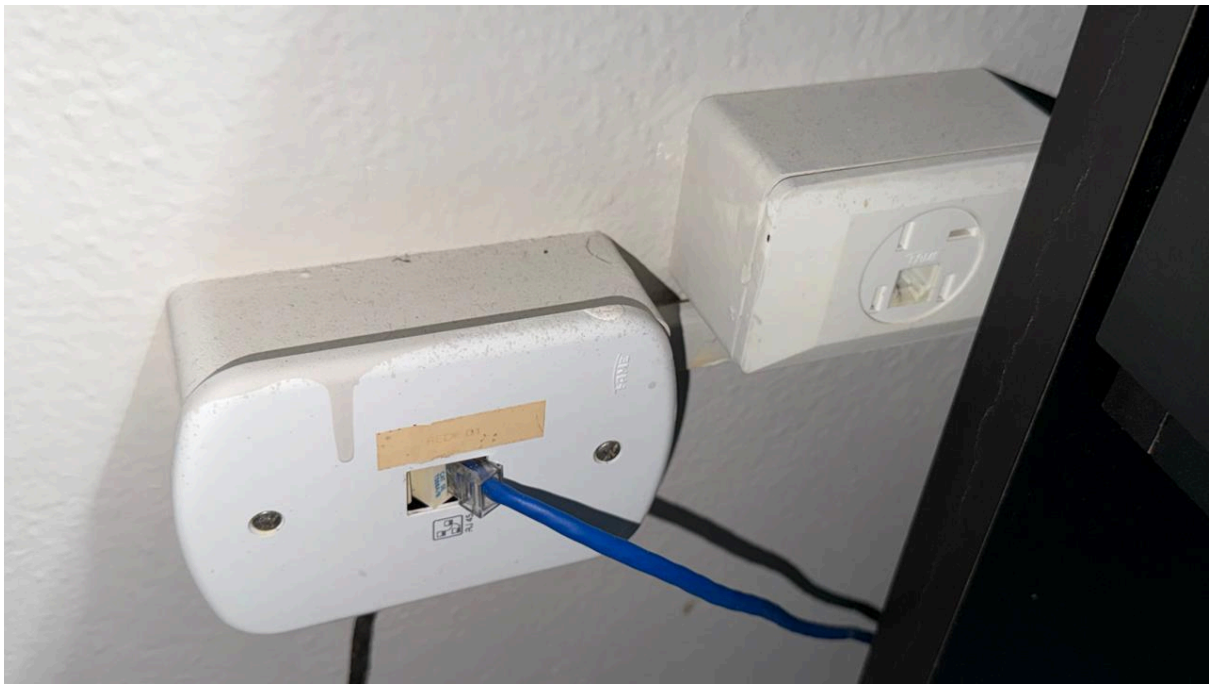






# SALA WILDER / MARCIO







# CORREDOR





## SALA DE ESPERA

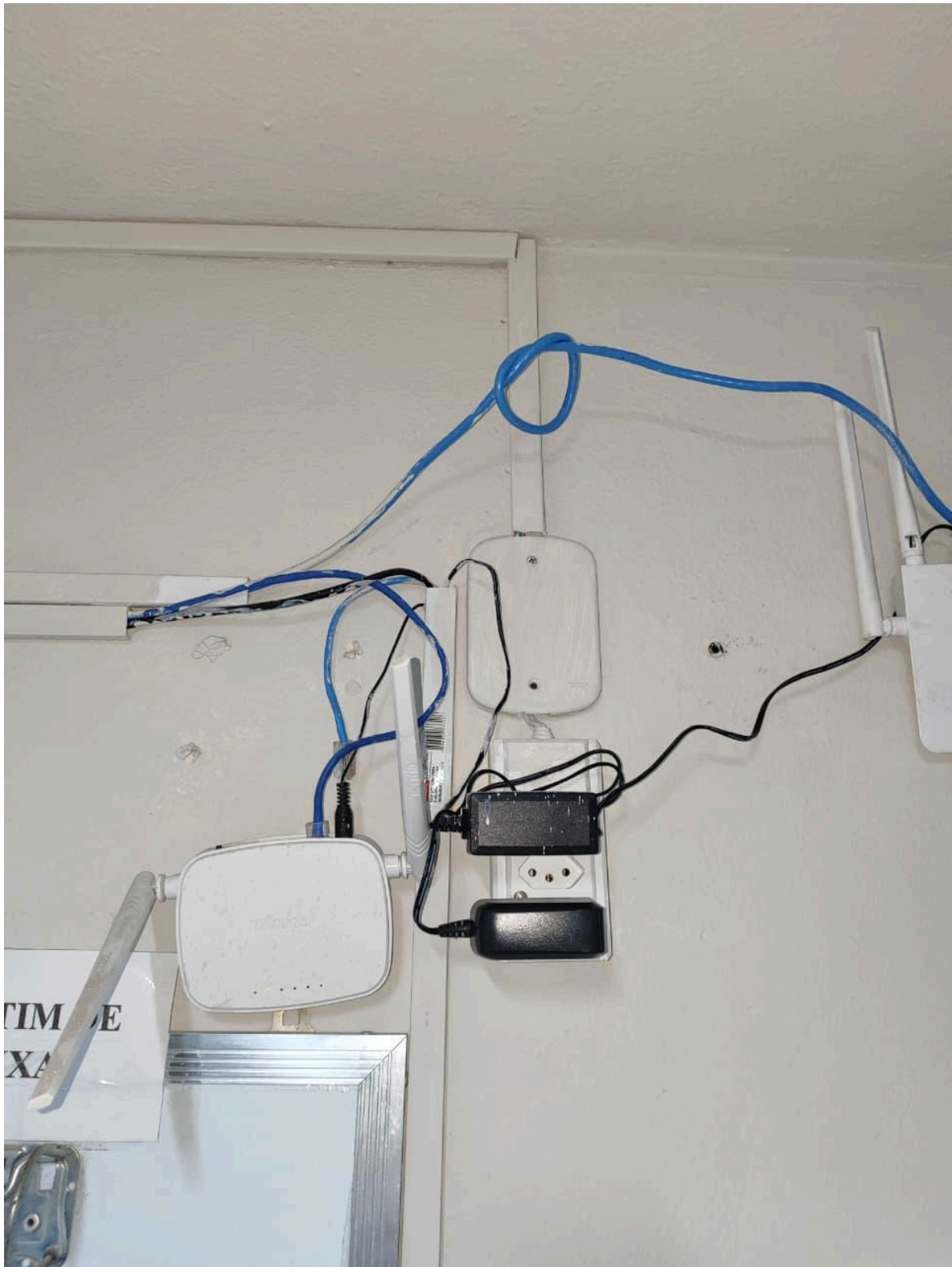














**DECRETOS  
LEGISLATIVO/  
RESOLUÇÕES**

**A  
PRE**



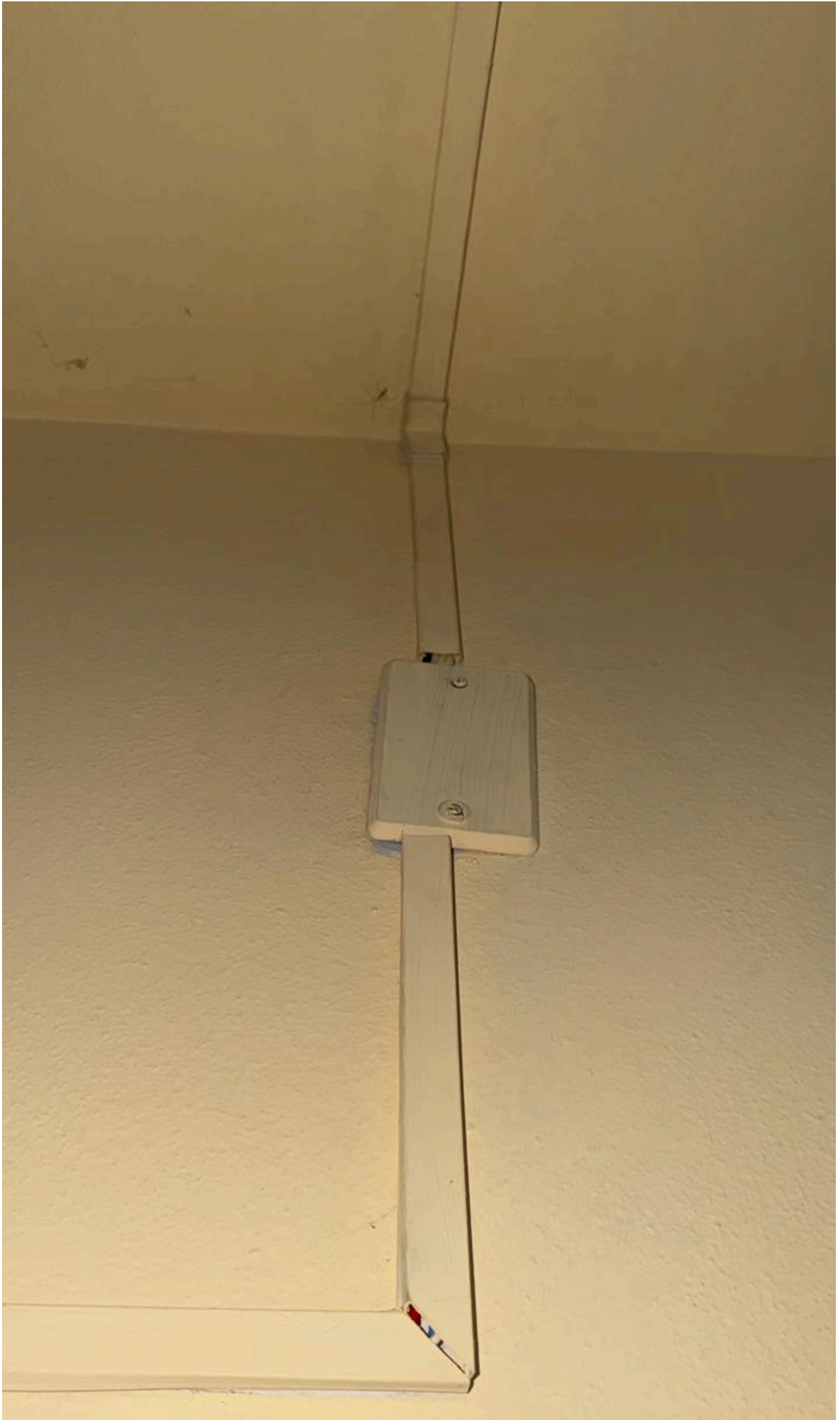
ARQUIVO



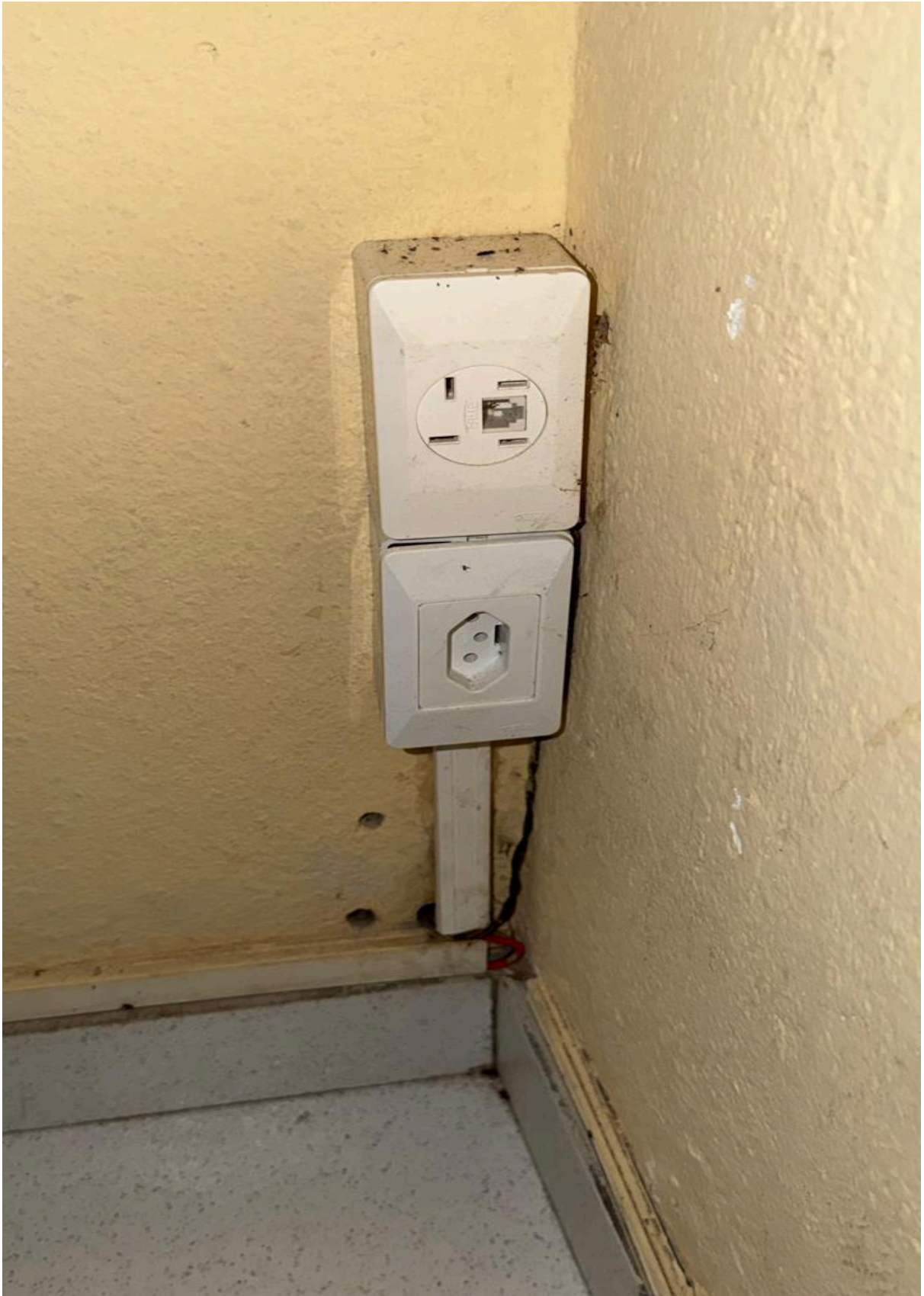


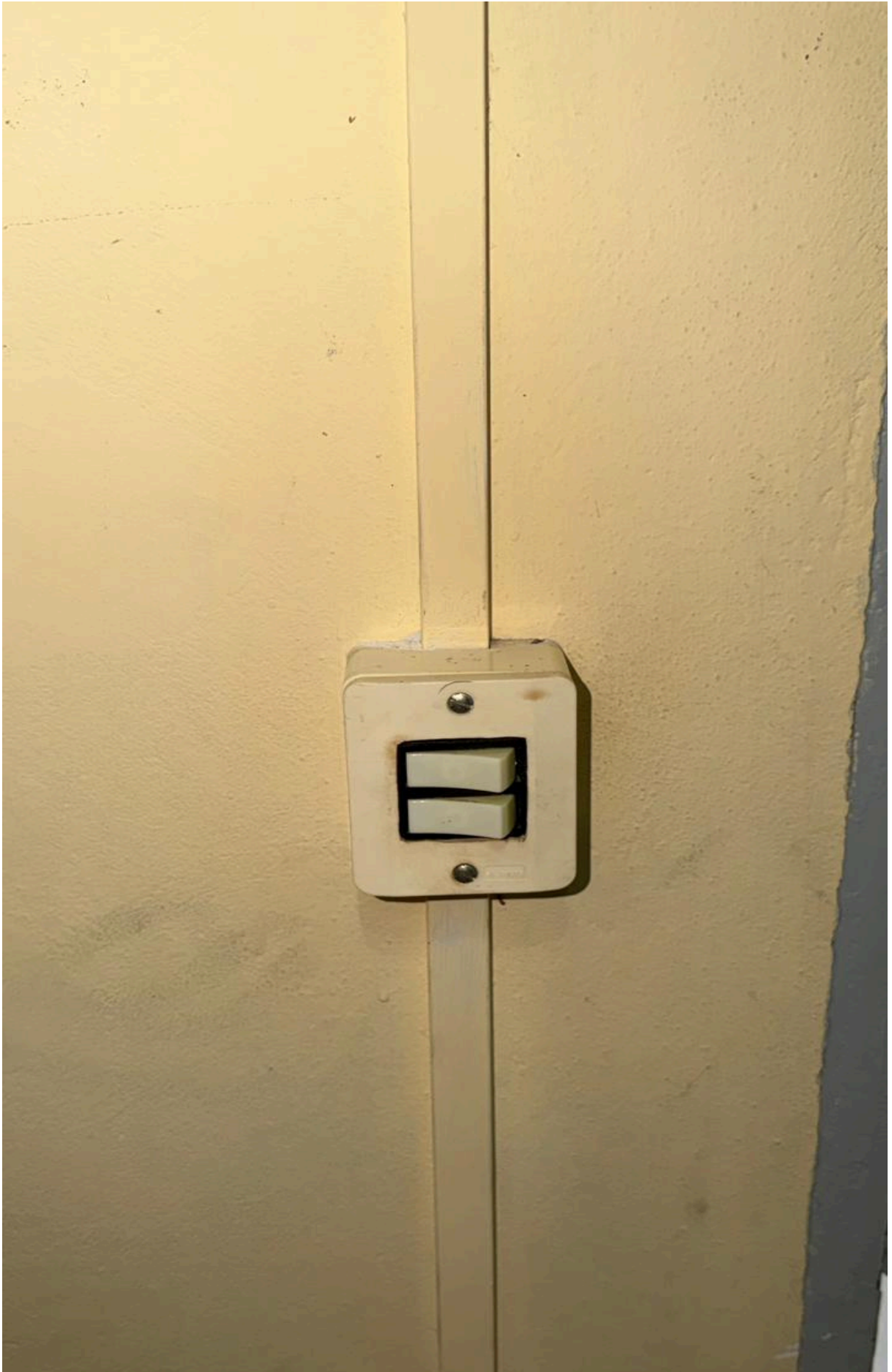












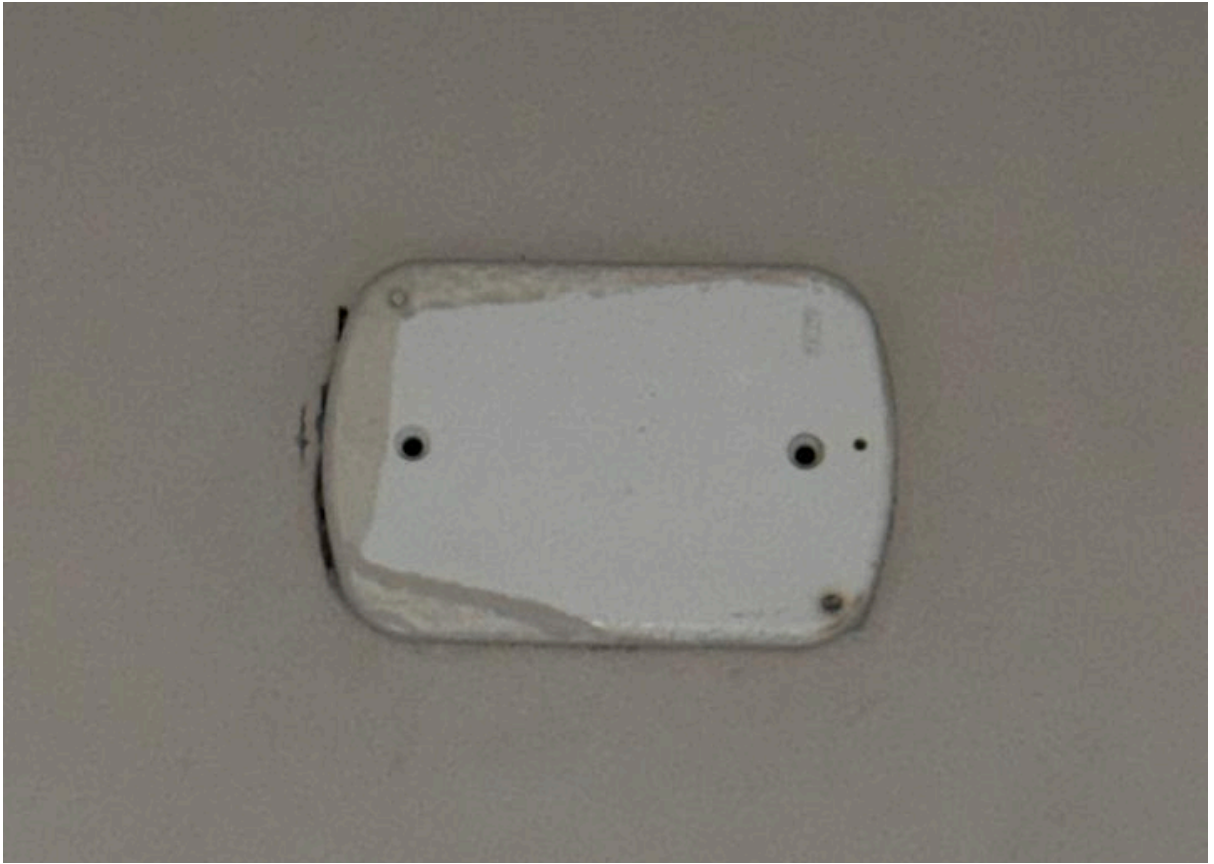


BANHEIRO E RECEPÇÃO

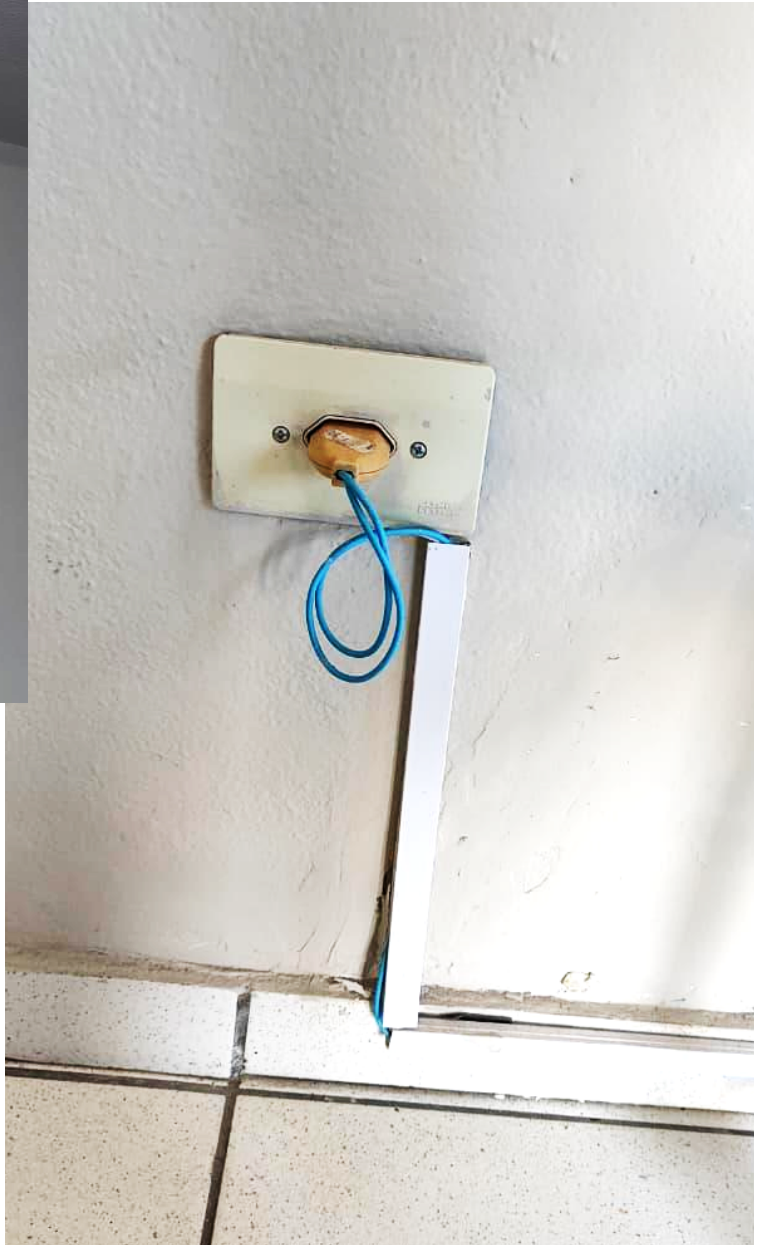












## PARTE EXTERNA



